

## 9. User's Manual

# SAMSUNG ELECTRONICS



World Wide Web  
<http://www.samsungmobile.com>

Printed in Korea  
Code No.:GH68-XXXXXA  
English. 09/2007. Rev. 1.0



Draft 03  
2007.09.13

## SGH-Z800 User's Guide

- Read **Health and safety** information before using your device.
- The program screens and your device may appear different from the screen images and the illustrations in this guide.
- Depending on the software installed or your service provider, the descriptions in this guide may differ, and may change without notice.

# Health and safety information

This is for users' safety and property protection. Read all safety guidelines carefully and follow all instructions and warnings. Failure to comply with them can be dangerous or illegal.

Do not use the device in potentially explosive environments

- Obey all regulations, signs and instructions.

Switch off in aircraft

- Wireless devices can cause interference with aircraft electronics.

Do not use the device when it can cause interference with RF signals or when it can be dangerous

- All wireless phones may be susceptible to interference from other electrical equipment that could affect performance.

Remember to make backup copies of important information stored in the device

Do not disassemble or modify the device

- Samsung is not liable for any damages caused by users disassembling or modifying the device.

Do not subject the device to shocks

- Subjecting the device to shocks may cause damage or deform the shape of the device.

Keep it dry

- Moisture or liquid can form inside the device, which may damage the device's parts and circuit boards.

Do not store the device in hot areas

- High temperatures can warp or melt certain plastics and shorten the life of electronic devices.

Do not store the device in cold areas

- When the device returns to its normal temperature, moisture can form inside the device and damage electronic circuit boards.

Do not leave the device in a closed car for a long time

- The temperature in a car can reach 80 °C, which can permanently damage your device.

Use only Samsung-approved components and accessories.

- Unapproved components and accessories are not guaranteed.

Use the device carefully to prevent damages

- Do not bend or expose to impacts. Doing so may cause data loss.

Keep it clean

- Keep the USB connector clean to prevent damage. Wipe it with a soft, dry cloth to clean. Do not use harsh chemicals such as thinner and solvents.

Be sure to follow all instructions and precautions when connecting the device to your PC

- Please note that the device must connect in a manner that will not damage the USB connector or port.
- Do not forcibly connect the device to a USB port. Doing so may cause damage to the device.
- Use only the specified voltage. Non-specified voltages may cause the device to catch fire, give off an electrical shock, or damage the device.
- Do not disconnect the device while initialising the modem, as it may cause the HSDPA Connection Manager to malfunction.
- Do not remove the USIM card when the device is connected to your PC, as it may cause the HSDPA Connection Manager to malfunction or damage the USIM card.

# Contents

## Getting started

---

Unpack .....	4
Overview .....	4
Inserting the USIM card.....	5
Removing the USIM card .....	5
Inserting an optional memory card .....	6
Inserting the HSDPA USB dongle into your PC .....	7
Installing the HSDPA Connection Manager program .....	8
Checking the USB driver .....	9

## Using basic functions

---

Running HSDPA Connection Manager ...	10
From the Start menu .....	10
From the desktop .....	10
Using the tray icon .....	10
Connecting to the Internet .....	11

## Using additional functions

---

Using messages .....	12
Creating and sending a text message .....	12
Checking messages .....	13
Managing a text template .....	15
Using My folder .....	15

Using Phonebook.....	16
Adding a new contact.....	16
Finding a contact .....	17
Copying contacts .....	17
Importing or exporting contacts.....	18
Using the inserted memory card.....	19

## **Customising the settings**

---

General settings .....	20
Configuring Internet settings.....	20
Selecting the network.....	21
Setting alarms .....	21
Locking the USIM card.....	22
Changing the PIN.....	22
Accessing information about registration .....	23

## **Frequently asked questions**

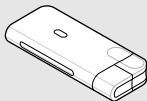
---

About the device and services .....	24
About HSDPA Connection Manager program.....	26

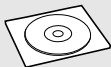
# Getting started

## Unpack

---



HSDPA USB Dongle



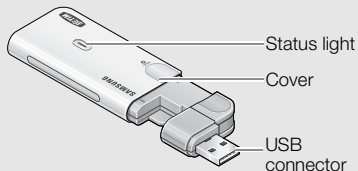
Program CD



User's Guide

## Overview

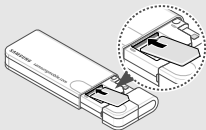
---





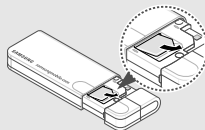
## Inserting the USIM card

Open the cover and insert the USIM card in the slot.



The gold-coloured contacts on the card are face down.

## Removing the USIM card



### Important USIM card information

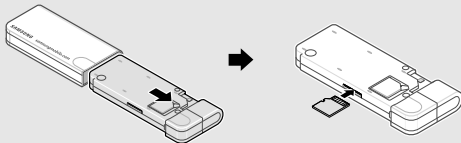
- The USIM card and its contacts can be easily damaged by scratches or bending, so be careful when handling the card.
- To prevent someone using your USIM card when it is stolen or lost, you can lock the card. See page 22.
- To purchase a USIM card or subscribe to a network, contact your service provider.

# Getting started

## Inserting an optional memory card

---

1. Pull the HSDPA USB dongle out of the cover completely.
2. Insert an optional memory card into the slot.

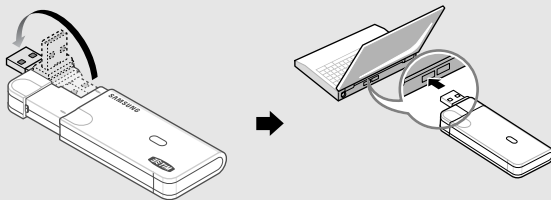


### Important memory card information

- Do not remove a card from the device while data is being accessed or transferred. This could result in loss of data and/or damage to the card or device.
- Do not subject cards to strong shocks.
- Do not touch card terminals with your fingers or metal objects. If dirty, wipe the card with a soft cloth.
- Do not expose cards in a place subject to electrostatic discharge and/or electrical noise.

## Inserting the HSDPA USB dongle into your PC

1. Open the cover and rotate the USB connector.
2. Close the cover and insert the HSDPA USB dongle into the USB port of your PC.



### Note

Connect the USB connector to the port correctly. If you connect it on the wrong side or with a force, the USB connector or port will be damaged.

# Getting started

## Installing the USB driver and HSDPA Connection Manager program

---

1. Make sure that you have inserted the USIM card into the HSDPA USB dongle.
2. Insert the HSDPA USB dongle into the USB port of your PC.  
The green light on the device stays lit.
3. Insert the supplied CD into the CD-ROM drive of your PC.  
The program launches automatically.
4. Click [Install Driver].
  - The USB driver is installed.
5. Click [Finish].
6. Select [No, I will restart my computer later.] and click [Finish].

7. Click [Install Connection Manager] and then [Next].
  - If the device is not inserted, the error screen appears. Insert the device and click [Retry].
  - If the [New Hardware Found Wizard] or [Found New Hardware] window appears during the installation, click [Cancel] or [X].
8. Change the location, if necessary, and click [Next].
9. Click [Install].
  - The HSDPA Connection Manager program is installed.
10. Click [Finish] to finish the installation.

## Checking the USB driver

Click [Start] and select [Settings] - [Control Panel] - [System] - [Hardware] - [Device Manager]. After the successful installation of the USB driver, **Samsung USB driver** appears on the Device Manager window.

# Using basic functions

## Running the HSDPA Connection Manager program

---

### From the Start menu


Click [Start] and select [All programs] - [Samsung] - [Connection Manager] - [Connection Manager].

### From the desktop

Double-click the [Connection Manager] icon on the desktop.

## Using the tray icon

---

1. Right click the  icon in the notification area.
2. Select the menu you want.
  - **Open:** open the HSDPA Connection Manager window.
  - **Mass storage:** open the folder of the inserted memory card and the HSDPA USB dongle.
  - **Exit:** exit the program.

## Connecting to the Internet

---

Click [Internet Connect] in the HSDPA Connection Manager window to connect to the Internet using the HSDPA network.

You can check information about the current network connection at the bottom of the window.

To end the connection with the Internet, click [Internet Disconnect].

# Using additional functions

## Using messages

---

Send a text message and view the received messages.

### Creating and sending a text message

1. Click [Text Message] in the HSDPA Connection Manager window.
2. Click [Write].
3. Enter the message text.
  - Click [Templates] to use the stored text. To create text templates, see page 14.
4. Enter the phone numbers in the Recipients list field.
  - Click [Phonebook] to retrieve numbers from Phonebook.
  - Click [Recent contacts] to retrieve numbers from the recent contact list.
5. Enter your number and click [Send] to send the message.
  - Click [Sending options] to set up the options for sending text messages.
  - Click [Save] the send the message later.
  - Click [Close] to cancel the message composition.



## Checking messages

Access messages you have received, sent, or saved to send at a later time.

To view the messages you have received:

1. Click [Text Message] in the HSDPA Connection Manager window.
2. Click [Inbox] from SIM or PC.
3. Check the message you want.

To view the messages you have sent:

1. Click [Text Message] in the HSDPA Connection Manager window.
2. Click [Sentbox] from SIM or PC.
3. Check the message you want.

# Using additional functions

To view the messages that the device has failed to send or you have saved to send at a later time:


1. Click [Text Message] in the HSDPA Connection Manager window.
2. Click [Drafts] or [Outbox] from SIM or PC.
3. Check the message you want.



From any message folder, you can use the following message options:

- Click [Reply] to reply to the sender.
- Click [Forward] to forward the message to other people.
- Click [Move] to move the message to My Folders.
- Click [Delete] to delete the message.

## Managing a text template

Create templates and use them to create new messages.

1. Click [Text message] - [Write] - [Templates].
2. Click  in the Templates window.

3. Enter the text.
  - Click [] to enter emotions.
4. Click [] to save the template.

## Using My folder

Create new folders and organise your messages.

To create a new folder:

1. Click [Text Message] in the HSDPA Connection Manager window.
2. Right-click [My Folders] from PC and select [Create Folder].
3. Enter the folder name and click [OK].

To move the message to my folder, check the message you want to move and click [Move].

# Using additional functions

## Using Phonebook

---

Store phone numbers and search for them in Phonebook.

### Adding a new contact

Add new contacts to Phonebook.

1. Click [Phonebook] in the HSDPA Connection Manager window.
2. Click [Contact].
3. Select a location and enter the contact information.
  - Click [Create] to create a new group.
4. Click [Save].

## Finding a contact

Search for contact information stored in Phonebook.

1. Click [Phonebook] in the HSDPA Connection Manager window.
2. Enter the first few letters of the name you want to find and click [Search].
3. Check the contact you want.
  - Click [Write] to send a text message to the contact.
  - Click [Edit] to edit or click [Delete] to delete the selected contact.

## Copying contacts

Copy contacts stored in the PC to the USIM card, or vice versa.

1. Click [Phonebook] in the HSDPA Connection Manager window.
2. Check contacts you want to copy.
3. Click [Copy].

The checked contacts are copied into the PC or USIM card.

# Using additional functions

## **Importing or exporting contacts**

Export contacts stored in the PC in digital files. Also, import contacts stored as digital files to the PC.

To export contacts:

1. Click [Phonebook] in the HSDPA Connection Manager window.
2. Select contacts you want to export.
3. Click [Export].
4. Select a location in which contacts are stored and enter a file name.
5. Click [Save].

To import contacts:

1. Click [Phonebook] in the HSDPA Connection Manager window.
2. Click [Import].
3. Select a CSV file to be imported and click [Open].

## Using the inserted memory card

---

1. Click [Mass Storage] in the HSDPA Connection Manager window.
2. Select the inserted memory card and use it as you would an external memory disk.

# Customising the settings

## General settings

---

Customise various settings to use the program.

1. Click [Settings] in the HSDPA Connection Manager window.
2. Click the [General] tab.
3. Select the options you want.

## Configuring Internet settings

---

Select a profile or enter information to connect to the Internet.

1. Click [Settings] in the HSDPA Connection Manager window.
2. Click the [Internet] tab.
3. Select a profile from the drop-down list.

Or, click [New], enter information you have received from your service provider, and click [Save].



## Selecting the network

---

Select the network you want to connect.

1. Click [Settings] in the HSDPA Connection Manager window.
2. Click the [Network] tab.
3. Select [Auto] or [Manual] from Search Network.
4. If you select [Manual], select the network and click [Change].

## Setting alarms

---

Set the PC to sound when it is connected to the Internet or disconnected from the Internet. You can also set the PC to sound when there is a new text message.

1. Click [Settings] in the HSDPA Connection Manager window.
2. Click the [Sound] tab.
3. Click [Browse] in each item and select a sound file.

# Customising the settings

## Locking the USIM card

---

Lock the USIM card to keep it safe from unauthorised use. You must enter PIN (Personal Identification Number) to connect to the Internet when the USIM card is locked.

1. Click [Settings] in the HSDPA Connection Manager window.
2. Click the [USIM PIN] tab.
3. Select [Enable] from PIN Enable.
4. Enter the current PIN.

## Changing the PIN

---

Change the PIN that is used to lock or unlock the USIM card.

1. Click [Settings] in the HSDPA Connection Manager window.
2. Click the [USIM PIN] tab.
3. Enter the current PIN in Enter Current PIN.

4. Enter a new PIN in Enter New PIN.
5. Enter the new PIN again in Confirm New PIN.
6. Click [Change].

**Note**

If you enter an incorrect PIN three times, the USIM card is blocked. To unlock it, you need to enter your PUK (Personal Unblocking Key). The codes are supplied by your service provider.

## Accessing information about registration

---

1. Click [Settings] in the HSDPA Connection Manager window.
2. Click the [Information] tab.
3. Check information about registration.

# Frequently asked questions

## About the device and services

What is HSDPA?	HSDPA, short for High-Speed Downlink Packet Access, is a new protocol for mobile phone data transmission. This 3.5G technology allows for faster data transmission and streaming connections.
Will my HSDPA USB dongle work without a USIM card?	No. All HSDPA data is saved on a USIM card. You must insert a USIM card to use the HSDPA USB dongle.
Is it okay to insert another type of USIM card when using the HSDPA USB dongle?	No. The dongle only works with the USIM card provided by your service provider. It will not work with other USIM cards.
Why do I get a slow connection while I am using HSDPA?	HSDPA is a shared data service. You may experience slower connections when several users in the same area are accessing the HSDPA service.

Why won't my computer recognise my USB devices when I plug two of them together?	The computer cannot recognise two devices at the same time. Connect and disconnect USB device one at a time.
I connected the HSDPA USB dongle to my computer, but the Internet does not work.	When you connect the HSDPA USB dongle via a USB connection, you must click [Internet Connect] to access the Internet.
Can I connect the HSDPA USB dongle to a printer or fax?	You must connect the dongle to a computer. Then, you can use a printer or fax that is also connected to the computer.
Will the HSDPA USB dongle work with my computer's operating system?	The HSDPA USB dongle will work on Windows 2000/XP/Vista.

# Frequently asked questions

## About the HSDPA Connection Manager program

Why do I get the error message when I start the HSDPA Connection Manager program?

The program is not supported in Windows ME or 98. You must use a computer running Windows 2000/XP/Vista.

Will I still receive messages when the modem is offline?

Yes, but you cannot view those messages until you reconnect the modem. When you connect the modem to your computer, you can view any messages that have been received within the last 24 hours.

The program disappeared while I was using it.

You may have accidentally minimised or closed the program. If your taskbar shows the HSDPA Connection Manager icon, double-click it to restore the program. Otherwise, launch the program again.

How can I avoid losing the data on my USIM card?

If you disconnect the HSDPA USB dongle from your computer while the device is on, you may lose the data on your USIM card. First, exit the HSDPA Connection Manager program, then check the status light on the dongle. If the light is off, it is safe to disconnect it from the computer.

I entered the wrong PIN a few times. Why can't I use my device anymore?

If you enter the wrong PIN three times, your USIM card locks automatically. To unlock the card, you must enter a PUK, which you can get from your service provider.



**Note**

If you enter the wrong PUK ten times, the USIM card will no longer work.

Can I connect to the Internet using Dial-up Networking?

No. You must use a wireless connection to access the Internet. Open the HSDPA Connection Manager program and click [Internet Connect].

# Frequently asked questions

How many messages can I save on my USIM card?

The number of messages you can save depends on the type of USIM card you use. When you fill the card's memory, new messages will be saved on your computer.

How many contacts can I save on my USIM card?

The number of contacts you can save depends on the type of USIM card you use. When you fill the card's memory, new contacts will be saved on your computer.

Can I make voice calls with the HSDPA Connection Manager program?

No. The HSDPA Connection Manager program does not support voice calls.



# FCC Notice and Cautions

## FCC Notice

- ☑ • This device complies with Part 15 of the FCC Rules. Operation is subject to the following two conditions: (1) this device may not cause harmful interference, and (2) this device must accept any interference received, including interference that may cause undesired operation.
- This equipment has been tested and found to comply with the limits for a Class B digital device, pursuant to part 15 of the FCC Rules. These limits are designed to provide reasonable protection against harmful interference in a residential installation. This equipment generates, uses and can radiate radio frequency energy and, if not installed and used in accordance with the instructions, may cause harmful interference to radio communications.

However, there is no guarantee that interference will not occur in a particular installation. If this equipment does cause harmful interference to radio or television reception, which can be determined by turning the equipment off and on, the user is encouraged to try to correct the interference by one or more of the following measures:

- Reorient or relocate the receiving antenna.
- Increase the separation between the equipment and receiver.
- Connect the equipment into an outlet on a circuit different from that to which the receiver is connected.
- Consult the dealer or an experienced radio/TV technician for help.

## **Cautions**

Changes or modifications made in the radio USB modem, not expressly approved by Samsung, will void the user's authority to operate the equipment.

## **Exposure to Radio Frequency (RF) Signals**

---

### **Certification Information (SAR)**

Your wireless USB modem is a radio transmitter and receiver. It is designed and manufactured not to exceed the exposure limits for radio frequency (RF) energy set by the Federal Communications Commission (FCC) of the U.S. government. These FCC exposure limits are derived from the recommendations of two expert organizations, the National Council on Radiation Protection and Measurement (NCRP) and the Institute of Electrical and Electronics Engineers (IEEE). In both cases, the recommendations were developed by scientific and engineering experts drawn from industry, government, and academia after extensive reviews of the scientific

literature related to the biological effects of RF energy. The exposure limit set by the FCC for wireless mobile USB modems employs a unit of measurement known as the Specific Absorption Rate (SAR).

The SAR is a measure of the rate of absorption of RF energy by the human body expressed in units of watts per kilogram (W/kg). The FCC requires wireless USB modems to comply with a safety limit of 1.6 watts per kilogram (1.6 W/kg). The FCC exposure limit incorporates a substantial margin of safety to give additional protection to the public and to account for any variations in measurements.

SAR tests are conducted using standard operating positions accepted by the FCC with the USB modem transmitting at its highest certified power level in all tested frequency bands. Although the

SAR is determined at the highest certified power level, the actual SAR level of the USB modem while operating can be well below the maximum value. This is because the modem is designed to operate at multiple power levels so as to use only the power required to reach the network. In general, the closer you are to a wireless base station antenna, the lower the power output.

Before a new model USB modem is available for sale to the public, it must be tested and certified to the FCC that it does not exceed the exposure limit established by the FCC.

The highest SAR values for this model modem as reported to the FCC are:

GSM1900 Body-worn: 1.38 W/Kg.

This USB modem has demonstrated compliance with FCC RF exposure limits in laptop computer configurations with side loading USB slots, and can be used in laptop computers with substantially similar physical dimensions, construction, and electrical and RF characteristics. This USB Modem must not be collocated or operate in conjunction with any other antenna or transmitter. Use of this device in any other configuration may exceed the FCC RF Exposure compliance limit.

SAR information on this and other model USB modems can be viewed online at [www.fcc.gov/oet/fccid](http://www.fcc.gov/oet/fccid). This site uses the USB modem FCC ID number, A3LSGHZ800.

Once you have the FCC ID number for a particular USB modem follow the instructions on the website and it should provide values for typical or maximum SAR for a particular USB modem.

Additional product specific SAR information can also be obtained at [www.fcc.gov/cgb/sar](http://www.fcc.gov/cgb/sar).