

# Samsung Smart Kit

User's Guide

# Contents

## 1. Smart Kit at a Glance

### 1.1. Overview

- 1.1.1. What is Smart Kit?
- 1.1.2. Key Features

### 1.2. In the Box

### 1.3. Installation

## 2. Smart Kit Control using Smartphone

### 2.1. Initialization

- 2.1.1. Add Bridge
- 2.1.2. Bridge Management
- 2.1.3. Add Smart Bulb
- 2.1.4. Add group

# 1. Smart Kit at a Glance

## 1.1. Overview

### 1.1.1. What is Smart Kit?

Samsung Smart Kit is a lighting management solution that allows you to control LED bulbs in your house using your Android smartphone. Now you can easily turn lights on and off and change the ambience in your living space with a touch of your finger.



### 1.1.2. Key Features

Features	Description
Single Bulb Control	To control Smart Bulbs separately
Bulb Group Control	To control Smart Bulbs by group
Pattern Control	To apply specific lighting-up patterns to Smart Bulbs
Mood Control	To change the lighting to create specific moods
Schedule Control	To schedule Smart Bulbs to turn on and off automatically
Event Notification	To set Smart Bulbs to notify you about activities on your smartphone, such as an incoming call, SMS, etc.
Baby Care	To set Smart Bulbs to turn on automatically if a baby cries
Night Care	To set Smart Bulbs to turn on when you move your smartphone
Quick Panel Control	To quickly control the most frequently used Smart Bulbs using the Quick Panel on your smartphone
Detail Setting	To optimize Smart Kit to suit your needs, controlling various functions in detail

## 1.2. In the Box



Component	Characteristics		
		EU	US
Smart Bulb 3EA	<b>Input</b>	220~240V (50/60Hz)	AC 120V(60Hz)
	<b>Holder</b>	E27	E26
	Initially paired with the bridge in the box		
<sup>1</sup> Bridge 1EA	<b>Input:</b> DC 5V		
Adaptor 1EA	<b>Input:</b> AC 100~240V (50/60Hz)		
LAN Cable 1EA	General UTP Cable		
Smartphone App	Android-based Application		

## 1.3. Installation

**STEP 1:** Put a Smart Bulb into the socket and turn on the power.

**STEP 2:** Connect the bridge to the power using the Adaptor.

**STEP 3:** Connect the bridge to the AP (Access Point) using the LAN cable.

**STEP 4:** Download the 'Samsung Smart Kit' App from 'Google Play Store' and install it onto your smartphone.

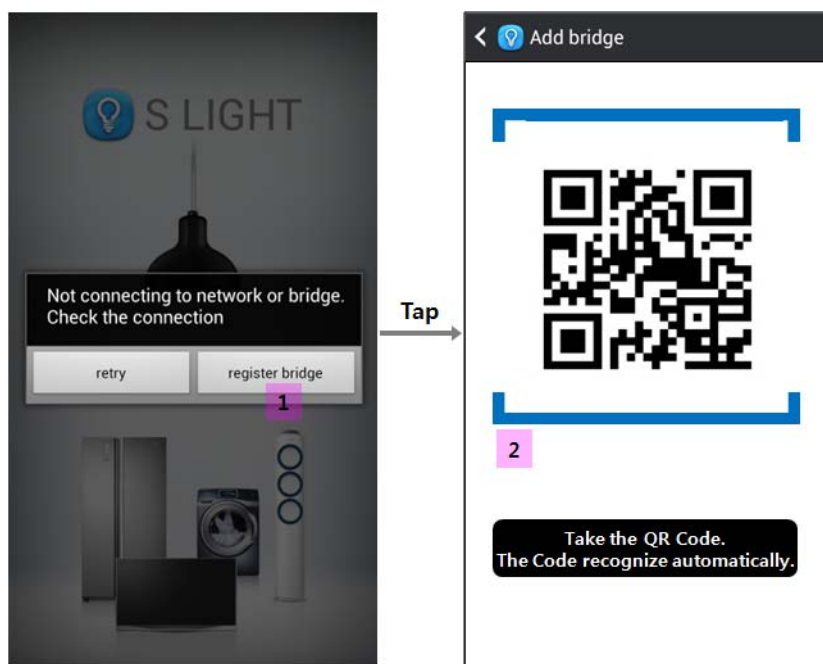
<sup>1</sup> FCC ID : A3LBRAB0

This device complies with part 15 of the FCC Rules. Operation is subject to the following two conditions: (1) This device may not cause harmful interference, and (2) this device must accept any interference received, including interference that may cause undesired operation.

## 2. Smart Kit Control using Smartphone

### 2.1. Initialization

#### 2.1.1. Add Bridge

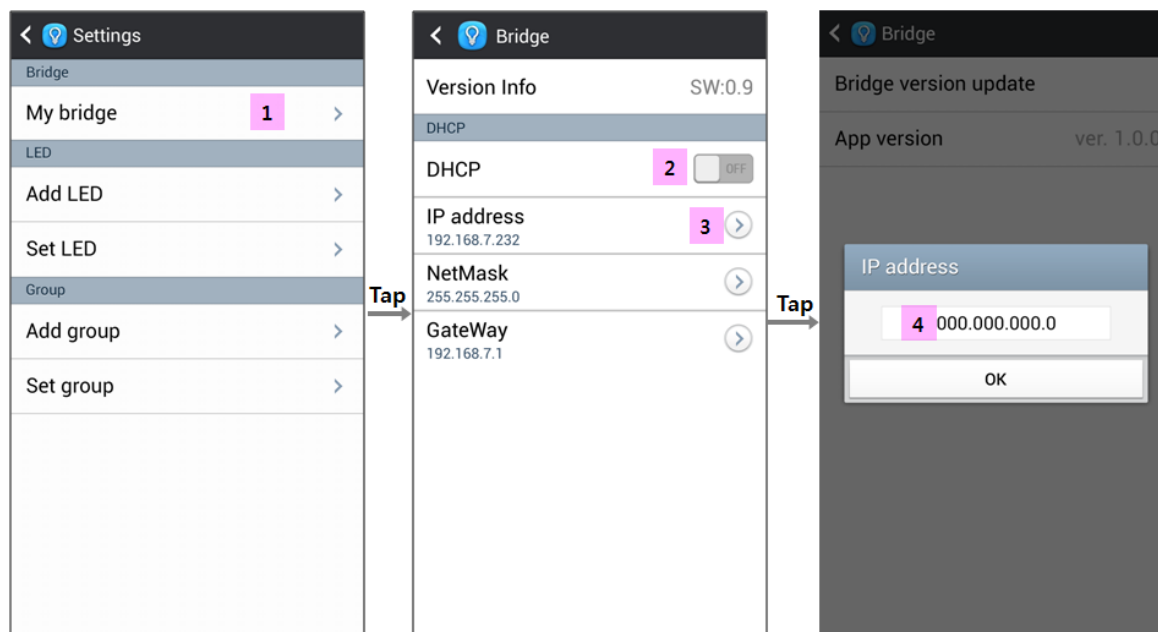


When you run the App at first:

- [1] You will see the dialog with a message "Not connecting to network or bridge. Check the connection." Then tap on 'register bridge'.
- [2] Take the QR code of the bridge to be added.

## 2.1.2. Bridge Management

### 2.1.2.1. Set up DHCP



[1] Tap 'My bridge' from the 'Settings' menu.

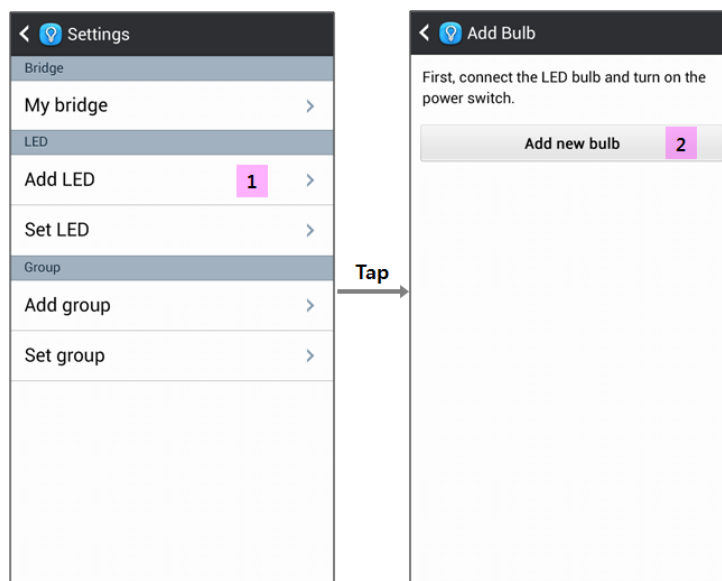
[2] The default value of DHCP is 'ON'. To set up DHCP manually, tap 'ON' to become 'OFF', and then hidden functions appear.

[3] Tap 'IP address' and a dialog pops up.

[4] Enter the IP address of the bridge and tap 'OK'.

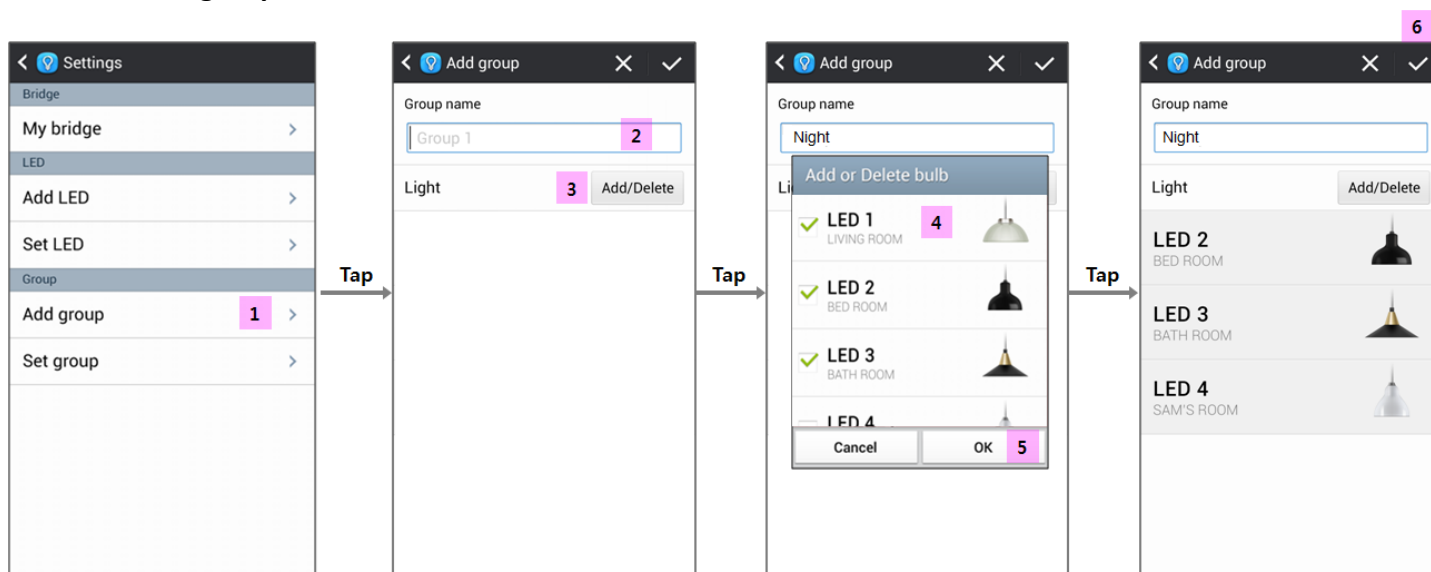
Set up the NetMask and Gateway in the same way.

### 2.1.3. Add Smart Bulb



- [1] Tap 'Add LED' from the Settings menu.
- [2] Touch 'Add new bulb' and hold for 1 minute.
- [3] When a new bulb appears, tap 'OK' to add it.

## 2.1.4. Add group



- [1] Tap 'Add group' from the Settings menu.
- [2] Type the name of a new group into the 'Group name' field.
- [3] Tap 'Add/Delete'.
- [4] Leave the bulbs to be added checked with ✓, and uncheck the others.
- [5] Tap 'OK'.
- [6] Tap ✓.