

Menu overview



The control panel provides access to various menus to set up the machine or use the machine's functions.



- For models that do not have the display screen on the control panel, this feature is not applicable.
- Some menus may not appear on the display depending on options or models. If so, it is not applicable to your machine.
- Some menu names may differ from your machine depending on its options or the models.
- The menus are described in the Advanced Guide (see "Useful Setting Menus" on page 188).

M332xND/M382xD/M382xND/M382xDW/M402xND

Accessing the menu

- 1 Press  (**Menu**) button on the control panel.
- 2 Press the arrows until the needed menu item appears and press **OK**.
- 3 If the setting item has sub menus, repeat step 2.
- 4 Press **OK** to save the selection.
- 5 Press  (**Cancel**) to return to the ready mode.

Menu overview

Information	Layout	Paper	Graphic	System Setup	
Menu Map	Orientation	Copies	Resolution	Date & Time^d	Auto Continue
Configuration	Portrait	MP Tray	Standard	Clock Mode^d	Auto Tray Swi.
Demo Page	Landscape	Paper Size	High Resol.	Language	Paper Substit.
Supplies Info.	Margin	Paper Type	Clear Text	Default Paper	Tray Protect.
Usage Counter	Common Margin	Tray <x>	Off	A4	SkipBlankPages
Account^a	MP Tray	Paper Size	Minimum	Letter	Maintenance
PCL Font	<Tray X>	Paper Type	Normal	Power Save	CLR Empty Msg.^e
PS Font	Emulation Mar.	Paper Source	Maximum	Wakeup Event	Supplies Life
EPSON Font	Duplex	Tray 1	Auto CR	Job Timeout	Image Mgr.
KSC5843 Font^b	Off	Tray 2^c		Altitude Adj.	TonerLow Alert
KSC5895 Font^b	Long Edge	MP Tray		Normal	ImgU.Low Alert^f
KSSM Font^b	Short Edge	Auto		High 1	RAM Disk
				High 2	Toner Save
				High 3	Eco Settings
				High 4	Auto Power Off

a. This is used only available when Job Accounting is enabled from the SyncThru™ Web Admin Service.

b. This option may not be available depending on your country.

c. This option only appears when an optional tray is installed.

d. M382xDWonly.

e. This option only appears when small amount of toner is left in the cartridge.

f. M3325/M3825/M4025 series only.

Menu overview

Emulation	Network		Job Management ^a
Emulation Type Setup	TCP/IP (IPv4)	Protocol Mgr.	Active Job
	DHCP	HTTP	Secured Job
	BOOTP	WINS	Stored Job
	Static	SNMPv1/v2	Print
	TCP/IP (IPv6)	UPnP(SSDP)	Delete
	IPv6 Protocol	mDNS	Filing Policy
	DHCPv6 Config	SetIP	Change Name
	Ethernet	SLP	Overwrite
	Ethernet Port	Network Conf.	
	Ethernet Speed	Clear Setting	
	802.1x		
	Wi-Fi^b		
	Wi-Fi On/Off		
	Wi-Fi Settings		
	WPS		
	Wi-Fi Direct		
	Wi-Fi Signal		
CLR Wi-Fi Set.			

a. This option is available when the optional memory installed or RAM Disk is checked.

b. M382xDW only.

Menu overview

M402xNX

You can set menus easily using the touch screen.









- The home screen is shown on the touch screen on the control panel.
- Some menus are grayed out depending on your options or models.
- Some menu names may differ from your machine depending on its options or the models.
- The menus are described in the Advanced Guide (see "Useful Setting Menus" on page 188).

Introducing the Home Screen









Information		Print various machine information and reports.
Eco		Displays Eco settings.
USB		Enters the USB menu when USB memory is inserted into the USB memory port on your machine.
Setup		Browse current machine settings or change machine values.
Job Status		Displays the jobs currently running, completed or in queue.
Counter		Displays total pages printed.
Help		View help and troubleshooting information.
Secure Release		Displays the list of secured jobs. You can delete or print the secured job on the list.
		Displays the toner status.
		Select the LCD brightness or language.
		Customize the option settings including darkness, original type, and more.

Menu overview

 (Information)	 (Eco)	 (Direct USB)	 (Setup)		
Configuration Demo Page Help List Network Configuration Supplies Information Job Reports Usage Counter Account Font List	Eco-On On Off Settings Default Mode On Off On-Forced^a Feature Configuration Default Custom	Print From  (Option settings) Copies Auto Fit Duplex Tray File Manage  (Option settings) Format Delete Show Space	System Date&Time Clock Mode Language Maintenance Default Paper Size Power Save Wakeup Event Altitude Adjustment Job Timeout File Policy Held Job Timeout	Admin Setup User Access Control Authentication Stamp Item Opacity Position Secure Release Max Job Count per User Smart Release Release Mode Chang Admin. Password Firmware Upgrade Image Overwrite Manual	Overwrite Method Overwrite Times Application Application Management Install New Application Network TCP/IP(IPv4) TCP/IP (IPv6) Ethernet 802.1x Protocol Management HTTP WINS SNMPv1/v2

a. If you set the eco mode on with a password from the SyncThru™ Web Service (**Settings** tab > **Machine Settings** > **System** > **Eco Settings**) or Samsung Easy Printer Manager (**Device Settings** > **Eco**), the **On force** message appears. You have to enter the password to change the eco mode status.

Menu overview

 (Setup)		 (Job Status)	 (Secure Release)	 (Counter)	 (Help)
SNTP UPnP(SSDP) mDNS SetIP SLP Network Configuration Clear Setting Layout Orientation Margin Duplex Paper Copies MP Tray/ [Tray<x>] Paper Source Tray Confirmation	Tray Behaviour Auto Continue Auto Tray Switch Paper Substitution Tray Protection Graphic Resolution Clear Text Edge Enhance Auto CR Emulation Emulation Type Setup	Current Job Secure Job Stored Job Completed Job	Card ID/PW PIN Stored Job List  (Option settings) Detail Print All Delete All Refresh	Total Printed	Basic Taskflow TroubleShooting

Machine's basic settings



- For models that do not have the display screen on the control panel, set the machine's settings by using the **Device Settings** in Samsung Easy Printer Manager program
 - For Windows and Mac users, you set from **Samsung Easy Printer Manager** > **(Switch to advanced mode)** > **Device Settings**, see "Device Settings" on page 242.

After installation is complete, you may want to set the machine's default settings.

To change the machine's default settings, follow these steps:



It may be necessary to press **OK** to navigate to lower-level menus for some models.

1

Select **(Menu)** > **System Setup** on the control panel.

OR

For the model with a touch screen, select **(Setup)** > **System** > **Next** on the touch screen.

2

Select the option you want, then press **OK**.

OR

For the model with a touch screen, select the option you want and **go to step 5**.

- **Language:** Change the language that is displayed on the control panel.
- **Date & Time:** You can set the time and date. They are printed on reports. If, however, they are not correct, you need to change it for the correct time being.




Enter the correct time and date using arrows or numeric keypad (see "Keypad letters and numbers" on page 210).

- Month = 01 to 12
- Day = 01 to 31
- Year = requires four digits
- Hour = 01 to 12
- Minute = 00 to 59



Machine's basic settings

- **Clock Mode:** You can set your machine to display the current time using either a 12 hours or 24 hours format.
- **Power Save:** When you are not using the machine for a while, use this feature to save power.



- When you press the power button or start printing, the product will wake up from the power saving mode.
- When you press any button except power button, the machine wake up from the power save mode. Press  (**Menu**) > **System Setup** > **Wakeup Event** > **On** on the control panel.

- **Altitude Adj.:** Print quality is affected by atmospheric pressure, which atmospheric pressure is determined by the height of the machine above sea level. Before you set the altitude value, determine the altitude where you are (see "Altitude adjustment" on page 209).

- 3 Select the option you want, then press **OK**.
- 4 Press **OK** to save the selection.
- 5 Press  (**Cancel**) or home() icon to return to ready mode.



- Refer to below links to set other settings useful for using the machine.
- See "Setting the paper size and type" on page 48.
 - See "Keypad letters and numbers" on page 210.

Media and tray

This chapter provides information on how to load print media into your machine.



- Using print media that does not meet these specifications may cause problems or require repairs. Such repairs are not covered by Samsung's warranty or service agreements.
- Make sure not to use the inkjet photo paper with this machine. It could cause damage to the machine.
- Using inflammable print media can cause a fire.
- Use designated print media (see "Print media specifications" on page 113).
- Make sure not to use the inkjet photo paper with this machine. It could cause damage to the machine.



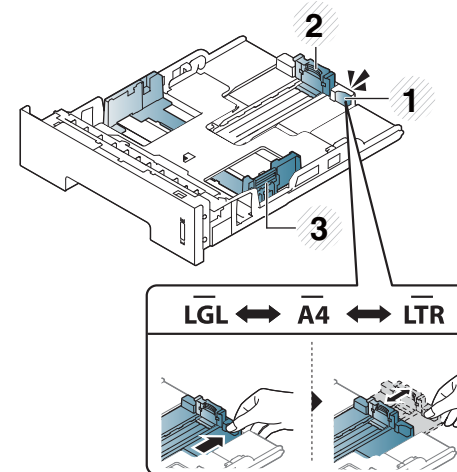
The use of inflammable media or foreign materials left in the printer may lead to overheating of the unit and, in rare cases may cause a fire.

Tray overview



If you do not adjust the guide, it may cause paper registration, image skew, or jamming of the paper.

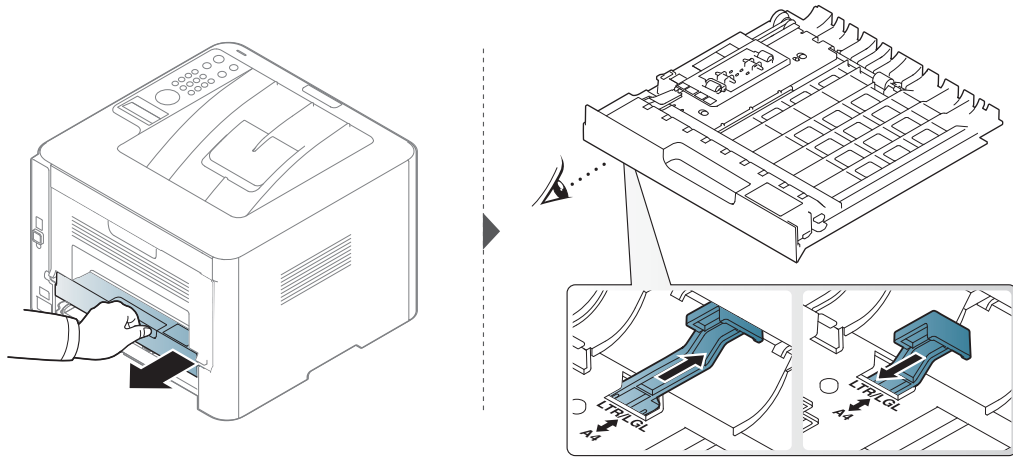
To change the size, you need to adjust the paper guides.



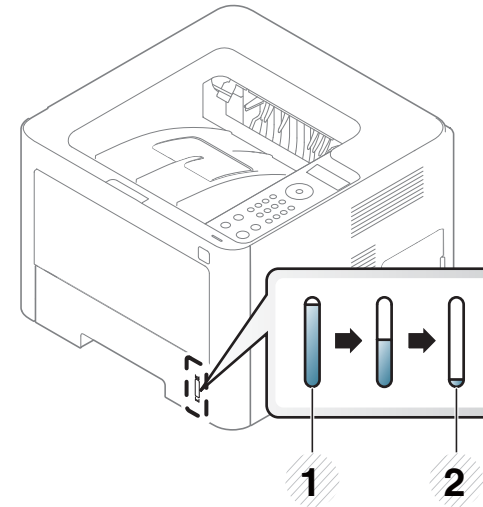
- 1 Tray extension guide
- 2 Paper length guide
- 3 Paper width guide

Media and tray

The duplex unit is preset to Letter/LGL or A4 size, depending on your country. To change the paper size, adjust the guides as shown below.



Paper quantity indicator shows the amount of paper in the tray.



- 1 Full
- 2 Empty

Loading paper in the tray

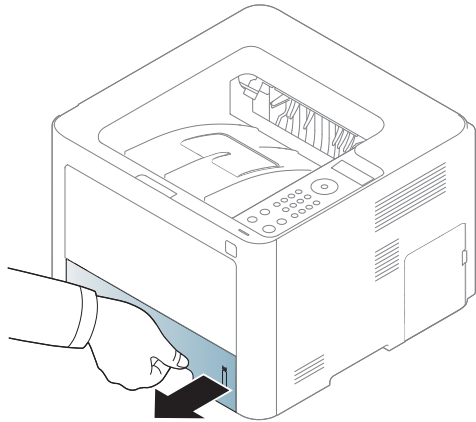


Illustrations on this user's guide may differ from your machine depending on its options or models. Check your machine type (see "Front view" on page 20).

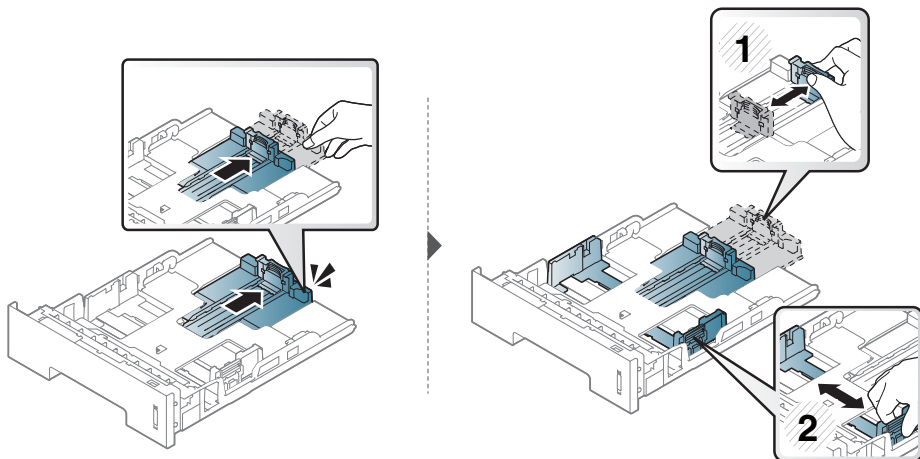
Media and tray

Tray 1 / optional tray

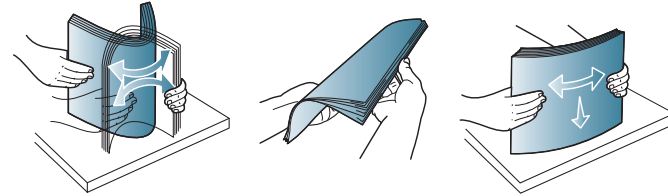
- 1 Pull out the paper tray.



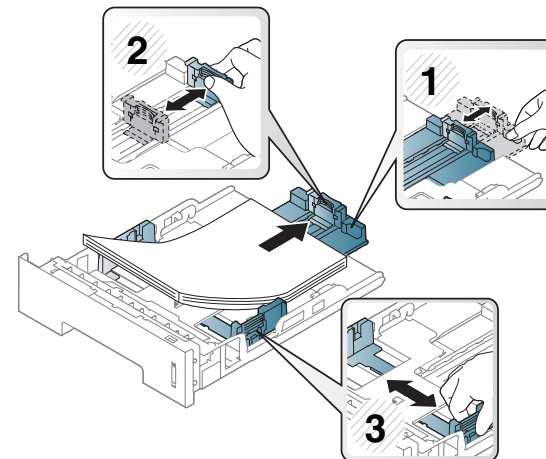
- 2 Squeeze the paper width guide and paper length lever to locate them in the correct paper size slot marked at the bottom of the tray to adjust to the size (see "Tray overview" on page 39).



- 3 Flex or fan the edge of the paper stack to separate the pages before loading papers.



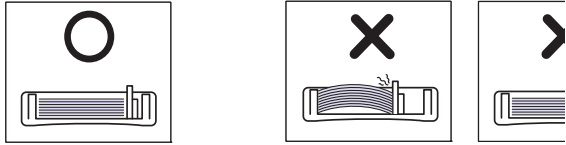
- 4 After inserting paper into the tray, squeeze the paper width guides and paper length guide.



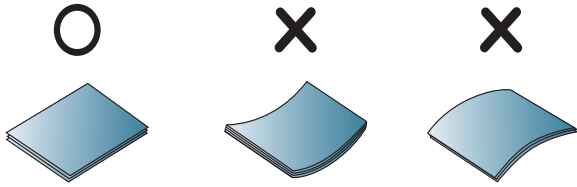
Media and tray



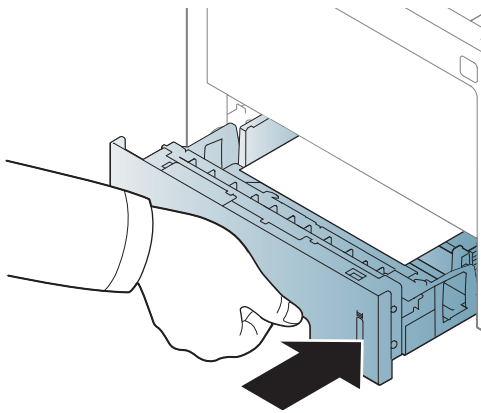
- Do not push the paper width guide too far causing the media to warp.
- If you do not adjust the paper width guide, it may cause paper jams.



- Do not use a paper with a leading-edge curl, it may cause a paper jam or the paper can be wrinkled.



- 5** Insert the tray back into the machine.



- 6** When you print a document, set the paper type and size for the tray (see "Setting the paper size and type" on page 48).

Multi-purpose (or Manual feeder) tray



Illustrations on this user's guide may differ from your machine depending on its options or models. Check your machine type (see "Front view" on page 20).

The Multi-purpose (or Manual feeder) tray can hold special sizes and types of print material, such as postcards, note cards, and envelopes (see "Print media specifications" on page 113).

Tips on using the Multi-purpose (or Manual feeder) tray

- Load only one type, size and weight of print media at a time in the Multi-purpose (or Manual feeder) tray.
- To prevent paper jams, do not add paper while printing when there is still paper in the Multi-purpose (or Manual feeder) tray. This also applies to other types of print media.
- Always load the specified print media only to avoid paper jams and print quality problems (see "Print media specifications" on page 113).
- Flatten any curl on postcards, envelopes, and labels before loading them into the Multi-purpose (or Manual feeder) tray.

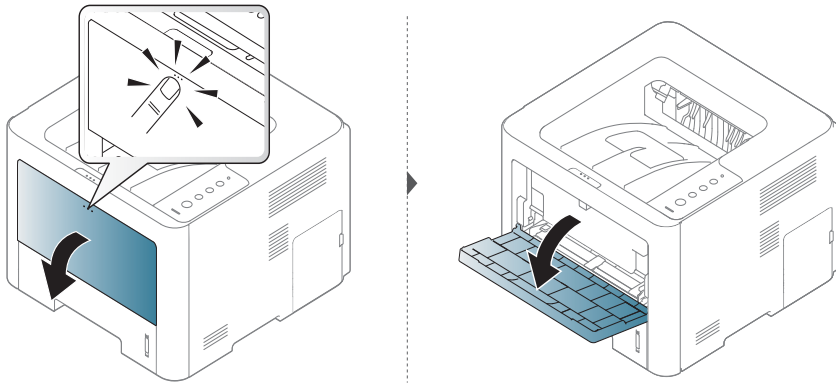
Media and tray

1 Pull out the paper tray for manual feeding.

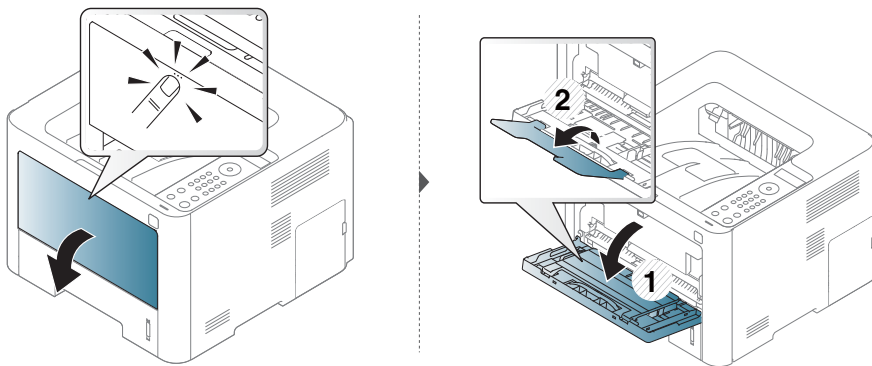
Or

Press the push-release of Multi-purpose (or Manual feeder) tray to open.

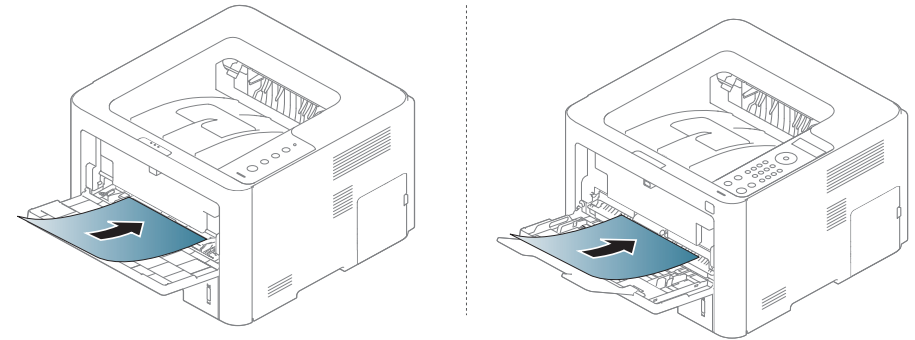
- M332xND/M382xD series



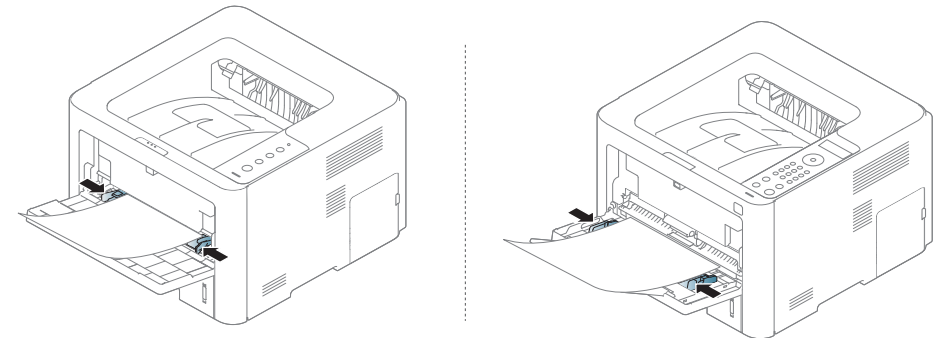
- M382xND/M382xDW/M402xND series



2 Load the paper.



3 Squeeze the Multi-purpose (or Manual feeder) tray paper width guides and adjust them to the width of the paper. Do not force them too much, or the paper will bent resulting in a paper jam or skew.



- When printing the special media, you must follow the loading guideline (See "Printing on special media" on page 44).
- When papers overlap when printing using Multi-purpose (or Manual feeder) tray, open tray 1 and remove overlapping papers then try printing again.


Media and tray

- 4 When you print a document, set the paper type and size for the Multi-purpose (or Manual feeder) tray (see "Setting the paper size and type" on page 48).

Printing on special media

The table below shows the special media usable in tray.

The paper setting in the machine and driver should match to print without a paper mismatch error.

To change the paper setting set in the machine, from the **Samsung Easy Printer Manager** select  **(Switch to advanced mode) > Device Settings.**

Or if your machine supports a display screen or touch screen, you can set it from the control panel.

Then, set the paper type from the **Printing preferences** window > **Paper** tab > **Paper Type** (see "Opening printing preferences" on page 51).



- When using special media, we recommend you feed one sheet at a time (see "Print media specifications" on page 113).
- Illustrations on this user's guide may differ from your machine depending on its options or models. Check your machine type (see "Front view" on page 20).

To see for paper weights for each sheet, refer to "Print media specifications" on page 113.

Types	Tray 1	Optional tray ^a	Multi-purpose (or manual feeder) tray
Plain	•	•	•
Thick	•	•	•
Thicker			•
Thin	•	•	•
Bond	•	•	•
Color			•
CardStock	•	•	•
Labels			•
Transparency			•
Envelope			•
Preprinted			•
Cotton			•
Recycled	•	•	•
Archive	•	•	•

a. This is feature is available when you install and optional tray (see "Variety feature" on page 10).

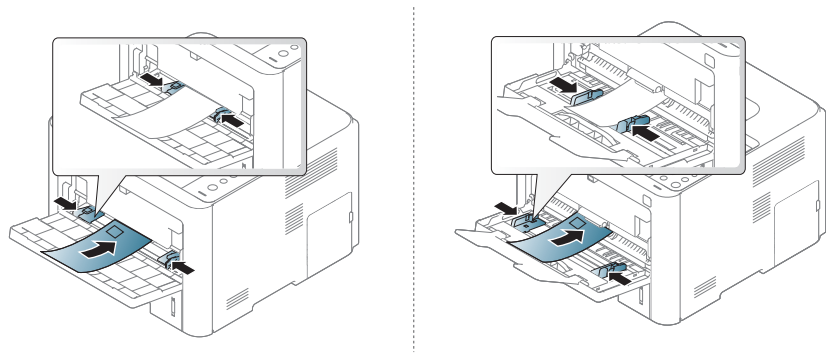
Media and tray

(●: Supported, Blank: Not supported)

Envelope

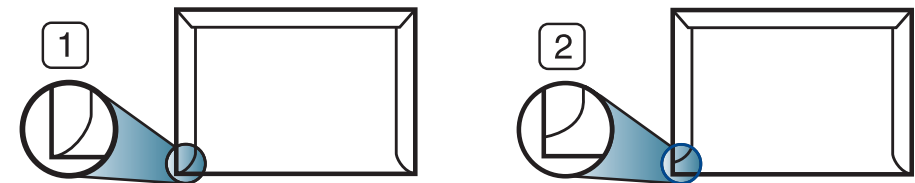
Printing successfully on envelopes depends upon the quality of the envelopes.

To print an envelope, place it as shown in the following figure.



- When selecting envelopes, consider the following factors:
 - **Weight:** should not exceed 90 g/m² otherwise; jams may occur.
 - **Construction:** should lie flat with less than 6 mm curl and should not contain air.
 - **Condition:** should not be wrinkled, nicked, nor damaged.
 - **Temperature:** should resist the heat and pressure of the machine during operation.
- Use only well-constructed envelopes with sharp and well-creased folds.
- Do not use stamped envelopes.

- Do not use envelopes with clasps, snaps, windows, coated lining, self-adhesive seals, or other synthetic materials.
- Do not use damaged or poorly made envelopes.
- Be sure the seam at both ends of the envelope extends all the way to the corner of the envelope.



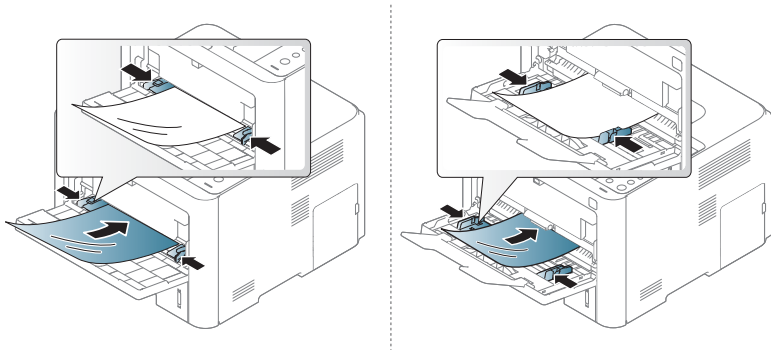
- 1 Acceptable
- 2 Unacceptable

- Envelopes with a peel-off adhesive strip or with more than one flap that folds over to seal must use adhesives compatible with the machine's fusing temperature for 0.1 second about 170°C (338 °F). The extra flaps and strips might cause wrinkling, creasing, or jams, and may even damage the fuser.
- For the best print quality, position margins no closer than 15 mm from the edges of the envelope.
- Avoid printing over the area where the envelope's seams meet.

Media and tray

Transparency

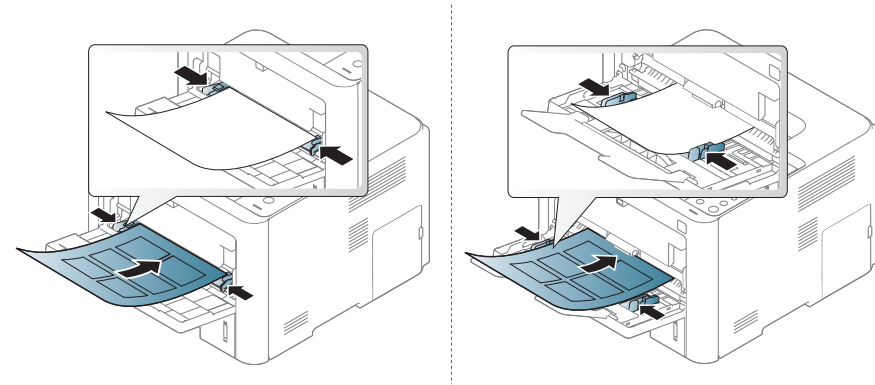
To avoid damaging the machine, use only transparencies designed for use in laser printers.



- Must withstand the machine's fusing temperature.
- Place them on a flat surface after removing them from the machine.
- Do not leave unused transparencies in the paper tray for long. Dust and dirt may accumulate on them, resulting in spotty printing.
- To avoid smudging caused by fingerprints, handle them carefully.
- To avoid fading, do not expose printed transparencies to prolonged sunlight.
- Ensure that transparencies are not wrinkled, curled, or have any torn edges.
- Do not use transparencies that separate from the backing sheet.
- To prevent transparencies from sticking to each other, do not let the printed sheets stack up as they are being printed out.

Labels

To avoid damaging the machine, use only labels designed for use in laser printers.

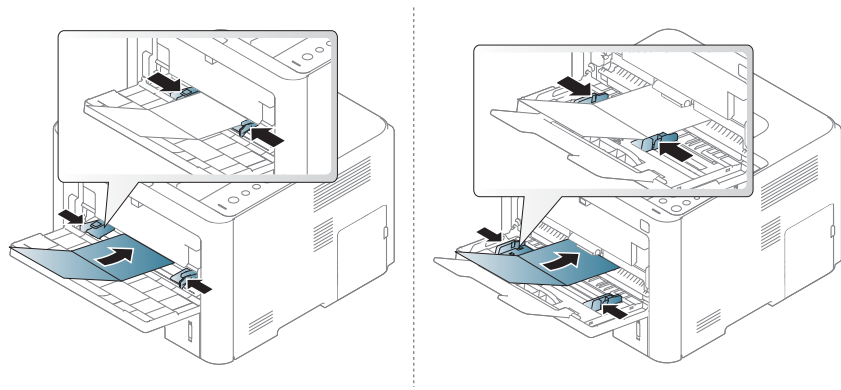


- When selecting labels, consider the following factors:
 - **Adhesives:** Should be stable at your machine's fusing temperature about 170°C (338°F).
 - **Arrangement:** Only use labels with no exposed backing between them. Labels can peel off sheets that have spaces between the labels, causing serious jams.
 - **Curl:** Must lie flat with no more than 13 mm of curl in any direction.
 - **Condition:** Do not use labels with wrinkles, bubbles, or other indications of separation.
- Make sure that there is no exposed adhesive material between labels. Exposed areas can cause labels to peel off during printing, which can cause paper jams. Exposed adhesive can also cause damage to machine components.

Media and tray

- Do not run a sheet of labels through the machine more than once. The adhesive backing is designed for only a single pass through the machine.
- Do not use labels that are separating from the backing sheet or are wrinkled, bubbled, or otherwise damaged.

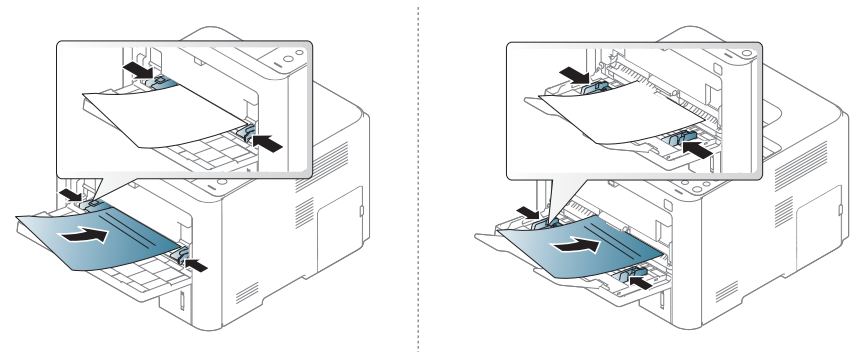
Card stock/ Custom-sized paper



- In the software application, set the margins to at least 6.4 mm (0.25 inches) away from the edges of the material.

Preprinted paper

When loading preprinted paper, the printed side should be facing up with an uncurled edge at the front. If you experience problems with paper feeding, turn the paper around. Note that print quality is not guaranteed.



- Must be printed with heat-resistant ink that will not melt, vaporize, or release hazardous emissions when subjected to the machine's fusing temperature for 0.1 second (about 170°C (338°F)).
- Preprinted paper ink must be non-flammable and should not adversely affect machine rollers.
- Before you load preprinted paper, verify that the ink on the paper is dry. During the fusing process, wet ink can come off preprinted paper, reducing print quality.

Media and tray


Glossy Photo

- Recommended media: Glossy paper (Letter) for this machine by **HP Brochure Paper** (Product: Q6611A) only.
- Recommended media: Glossy paper (A4) for this machine by **HP Superior Paper 160 glossy** (Product: Q6616A).

Setting the paper size and type

After loading paper in the paper tray, set the paper size and type using the control panel buttons.

The paper setting in the machine and driver should match to print without a paper mismatch error.





To change the paper setting set in the machine, from the **Samsung Easy Printer Manager** select  **(Switch to advanced mode)** > **Device Settings**.

Or if your machine supports a display screen or touch screen, you can set it from the control panel.

Then, set the paper type from the **Printing preferences** window > **Paper** tab > **Paper Type** (see "Opening printing preferences" on page 51).



It may be necessary to press **OK** to navigate to lower-level menus for some models.

- 1 Select  **(Menu)** > **Paper** > **Paper Size** or **Paper Type** button on the control panel.
OR
For the model with a touch screen, select  **(Setup)** > **Paper** > **Next** > select a tray > **Paper Size** or **Paper Type** on the touch screen.
- 2 Select the option you want.
For the model with a touch screen, select the option you want and go to step 4.
- 3 Press **OK** to save the selection.
- 4 Press  **(Cancel)** or home () icon to return to ready mode.



If you want to use special-sized paper such as billing paper, select the **Paper** tab > **Size** > **Edit...** and set **Custom Paper Size Settings** in the **Printing Preferences** (see "Opening printing preferences" on page 51).

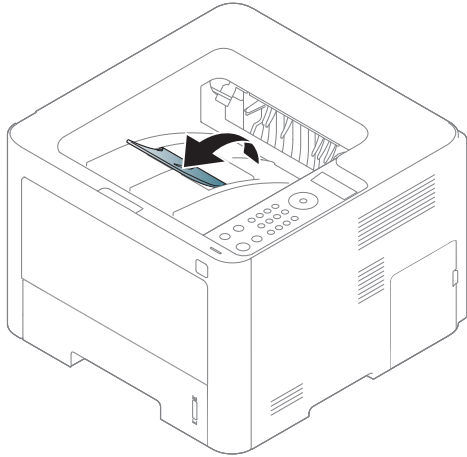
Media and tray

Using the output support



The surface of the output tray may become hot if you print a large number of pages at once. Make sure that you do not touch the surface, and do not allow children near it.

The printed pages stack on the output support, and the output support will help the printed pages to align. Unfold the output support.



- Illustrations on this user's guide may differ from your machine depending on its options or models. Check your machine type (see "Front view" on page 20).
- If more than 50 pages (one-sided) of Legal paper is stacked in the output tray, paper can be mis-aligned or paper jams can occur. Do not let paper to stack up in the output tray.
- When printing on thick paper, paper may not properly align on the output support. Close the output support or turn the paper over in the tray before printing.

Basic printing



For special printing features, refer to the Advanced Guide (see "Using advanced print features" on page 213).

Printing

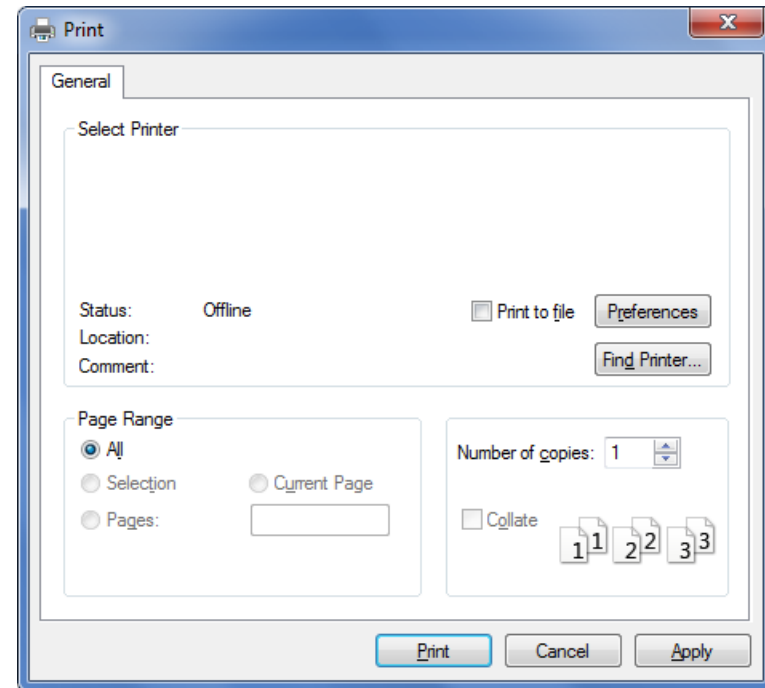


- If you are a Mac, Linux, or Unix operating systems user, refer to the Advanced Guide (see "Mac printing" on page 223, "Linux printing" on page 225, or "Unix printing" on page 227).
- For Windows 8 user, see "Basic printing" on page 247.

The following **Printing Preferences** window is for Notepad in Windows 7.

- 1 Open the document you want to print.
- 2 Select **Print** from the **File** menu.

- 3 Select your machine from the **Select Printer** list.



- 4 The basic print settings including the number of copies and print range are selected within the **Print** window.





To take advantage of the advanced printing features, click **Properties** or **Preferences** from the **Print** window (see "Opening printing preferences" on page 51).

- 5 To start the print job, click **OK** or **Print** in the **Print** window.

Basic printing




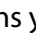
Canceling a print job

If the print job is waiting in the print queue or print spooler, cancel the job as follows:

- You can access this window by simply double-clicking the machine icon () in the Windows task bar.
- You can also cancel the current job by pressing  (**Cancel**) on the control panel.

Opening printing preferences

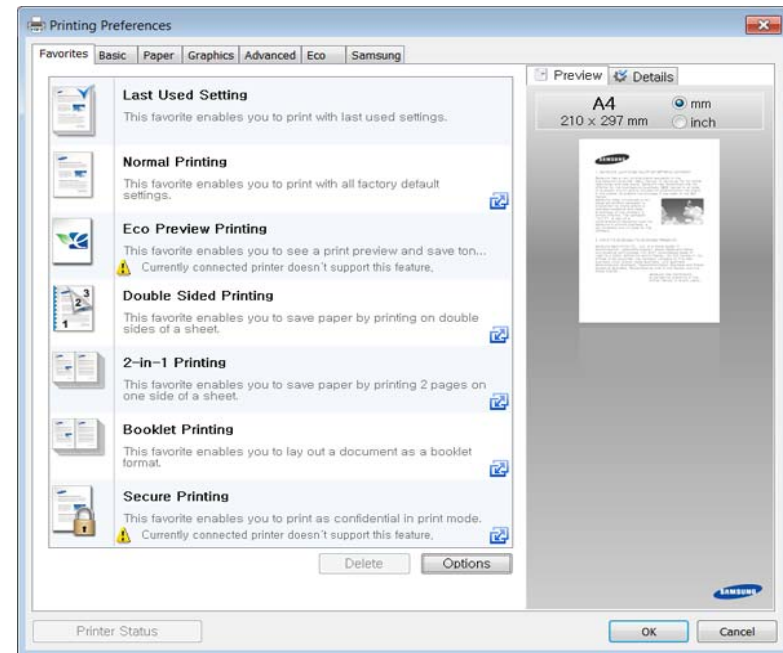


- The **Printing Preferences** window that appears in this user's guide may differ depending on the machine in use.
- When you select an option in **Printing Preferences**, you may see a warning mark  or . An  mark means you can select that certain option but it is not recommended, and an  mark means you cannot select that option due to the machine's setting or environment.
- For Windows 8 user, see "Opening more settings" on page 248.

- 1 Open the document you want to print.
- 2 Select **Print** from the file menu. The **Print** window appears.
- 3 Select your machine from the **Select Printer**.
- 4 Click **Properties** or **Preferences**.



The screenshot may differ depending on model.



Basic printing



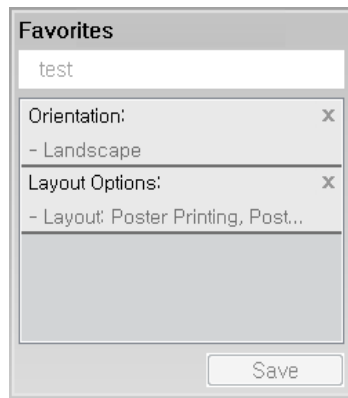
- You can apply **Eco** features to save paper and toner before printing (see "Easy Eco Driver" on page 235).
- You can check the machine's current status pressing the **Printer Status** button (see "Using Samsung Printer Status" on page 243).

Using a favorite setting

The **Favorites** option, which is visible on each preferences tab except for the **Samsung** tab, allows you to save the current preferences for future use.

To save a **Favorites** item, follow these steps:

- 1 Change the settings as needed on each tab.
- 2 Enter a name for the item in the **Favorites** input box.



- 3 Click **Save**.

- 4 Enter name and description, and then select the desired icon.
- 5 Click **OK**. When you save **Favorites**, all current driver settings are saved.



To use a saved setting, select it in the **Favorites** tab. The machine is now set to print according to the settings you have selected.

To delete saved settings, select it in the **Favorites** tab and click **Delete**.

Using help

Click the option you want to know on the **Printing Preferences** window and press **F1** on your keyboard.

Basic printing

Eco printing

The **Eco** function reduces toner consumption and paper usage. The **Eco** function allows you to save print resources and lead you to eco-friendly printing.

If you press the **Eco** button from the control panel, Eco mode is enabled. The default setting of Eco mode is double-sided printing (long edge), multiple pages per side (2-up), skip blank pages, and toner save. Some features may not be available depending on the model.




- Double-sided printing (long edge) feature is only available for duplex models (see "Variety feature" on page 10).
- Depending on the printer driver you use, Skip blank pages may not work properly. If Skip blank pages feature does not work properly, set the feature from the Easy Eco Driver (see "Easy Eco Driver" on page 235).

Setting Eco mode on the control panel



- For models that do not have the display screen on the control panel, this feature is not applicable.
- It may be necessary to press **OK** to navigate to lower-level menus for some models.

- 1 Select  (**Menu**) > **System Setup** > **Eco Setup** on the control panel.
OR

For the model with a touch screen, select  (**Eco**) > **Settings** > **Next** on the touch screen.

- 2 Select the option you want and press **OK**.

For the model with a touch screen, select the option you want and go to step 4.



- **Default Mode:** Select this to turn on or off the eco mode.
 - **Off:** Set the eco mode off.
 - **On:** Set the eco mode on.




If you set the eco mode on with a password from the SyncThru™ Web Service (**Settings** tab > **Machine Settings** > **System** > **Eco Settings**) or Samsung Easy Printer Manager (**Device Settings** > **Eco**), the **On force** message appears. You have to enter the password to change the eco mode status.


- **Change Temp.:** Follow the settings from SyncThru™ Web Service or Samsung Easy Printer Manager. Before you select this item, you must set the eco function in SyncThru™ Web Service (**Settings** tab > **Machine Settings** > **System** > **Eco Settings**) or Samsung Easy Printer Manager (**Device Settings** > **Eco**).
 - **Default Eco:** The machine is set to **Default Eco** mode.
 - **Custom Eco:** Change any necessary values.

Basic printing

- 3 Press **OK** to save the selection.
- 4 Press  (**Cancel**) or home () icon to return to ready mode.

Setting eco mode on the driver

 To take advantage of the advanced printing features, click **Properties** or **Preferences** from the **Print** window (see "Opening printing preferences" on page 51).

Open the **Eco** tab to set Eco mode. When you see the eco image () , that means the eco mode is currently enabled.

Eco options

- **Printer Default:** Follows the settings from the machine's control panel.
- **None:** Disables Eco mode.
- **Eco Printing:** Enables eco mode. Activate the various Eco items you want to use.
- **Password:** If the administrator fixed to enable the Eco mode, you have to enter the password to change the status.



Password button: You can set from SyncThru™ Web Service (**Settings** tab > **Machine Settings** > **System** > **Eco Settings**) or Samsung Easy Printer Manager (**Device Settings** > **Eco**), the password button is activated. To change the print settings, click on this button, enter the password or need to contact the administrator.

Result simulator

Result Simulator shows the results of reduced emission of carbon dioxide, used electricity, and the amount of saved paper in accordance with the settings you selected.

- The results are calculated on the basis that the total number of printed paper is one hundred without a blank page when the Eco mode is disabled.
- Refers to the calculation coefficient about CO₂, energy, and paper from **IEA**, the index of Ministry of Internal Affairs and Communication of Japan and www.remanufacturing.org.uk. Each model has a different index.
- The power consumption in printing mode refers to the average printing power consumption of this machine.
- The actual amount displayed is only an estimate as the actual amount may differ depending on the operating system used, computing performance, application software, connection method, media type [thickness], media size, job complexity, etc.

Basic printing

Secure printing



- This feature is not supported for M332xND/M382xD.
- Some menus may not appear on the display depending on options or models. If so, it is not applicable to your machine.
- You might not be able to print a complex document using the RAM disk. Install an optional memory to print a complex document.

When you use a printing device in an office, school or other public place, you can protect your personal documents or confidential information by using the secure printing feature.





Starting secure printing from the SyncThru™ Web Service

- 1 Access a web browser, such as Internet Explorer, from Windows.
Enter the machine IP address of your printer (<http://xxx.xxx.xxx.xxx>) in the address field and press the Enter key or click **Go**.
- 2 Click Login on the upper right of SyncThru™ Web Service website.
- 3 **Settings > Machine Settings > System > Ram Disk.**
- 4 Enable **Ram Disk**.



This features may not appear on the display depending on options or models. If so, it is not applicable to your machine.

Printing secure documents from the control panel

- 1 Select  (**Menu**) > **Job Management** > **Stored Job** on the printer's control panel.
OR
For the model with a touch screen, select  (**Job Status**) > **Stored Jobs** > **Next** on the touch screen.
- 2 Select the document to print.
- 3 Enter the password that you set from the printer driver.
- 4 Print the document.
- 5 Press  (**Cancel**) or home () icon to return to ready mode.

Using USB memory device



This feature is available for M402xNX only (see "Variety feature" on page 10).

This chapter explains how to use a USB memory device with your machine.

About USB memory

USB memory devices are available with a variety of memory capacities to give you more room for storing documents, presentations, downloaded music and videos, high resolution photographs or whatever other files you want to store or move.

You can do the following tasks on your machine by using a USB memory device.

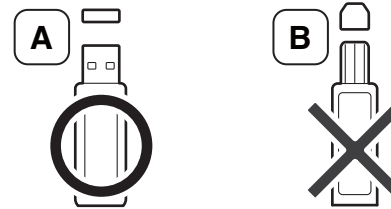
- Scan documents and save them on a USB memory device
- Print data stored on a USB memory device
- Restore backup files to the machine's memory
- Format the USB memory device
- Check the available memory space

Plugging in a USB memory device

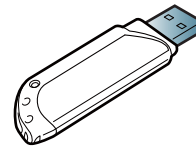
The USB memory port on the front of your machine is designed for USB V1.1 and USB V2.0 memory devices. Your machine supports USB memory devices with FAT16/FAT32 and a sector size of 512 bytes.

Check your USB memory device's file system from your dealer.

You must use only an authorized USB memory device with an A plug connector.



Use only a metal-shielded USB memory device.



Only use a USB memory device that has obtained compatibility certification; otherwise, the machine might not recognize it.