

Using the NFC feature (Optional)



If you want to add NFC feature to the machine, check the option lists and contact the purchasing point to order (see "Available accessories" on page 58). When you purchase a Wireless/NFC Kit (Wireless LAN Option), install the kit by following the steps described in the Wireless/NFC Kit (Wireless LAN Option) guide which is enclosed in the kit. After installing the Wireless Kit (Wireless LAN Option), set the machine to use this feature.

The NFC (Near Field Communication) printer allows you to directly print from your mobile device just by holding your mobile device over the NFC tag on Wireless/NFC Kit (Wireless LAN Option). It does not require installing print driver or connecting to an access point. You just need NFC supported mobile device. In order to use this feature, mobile apps needs to be installed on your mobile device. The default in your machine is NFC on.



- Depending on the material of the mobile device cover, NFC recognition may not work properly.
- Depending on the mobile device you are using, the transmission speed may differ.
- This feature is available only for the model with a NFC tag (see "Machine overview" on page 17).
- Using a cover or a battery other than the ones that came with the mobile device, or a metal cover/sticker can block NFC.
- If NFC devices keep failing to communicate,
 - Remove the case or cover from the mobile device, then try again.
 - Reinstall the battery from the mobile device, then try again.

Requirements

- NFC and Wi-Fi Direct enabled, supported mobile apps installed mobile device with Android OS 4.0 or higher.



Only Android OS 4.1 or higher will automatically enable the Wi-Fi Direct feature on your mobile device when you enable the NFC feature. We recommend you to upgrade your mobile device to Android OS 4.1 or higher to use the NFC feature.

- Wi-Fi Direct feature enabled printer (see "Setting up Wi-Fi Direct" on page 148).

Related Apps

There are some apps that can be used with the NFC feature. The apps can be downloaded from the Google Play Store.

- **Samsung Mobile Print:** Enables users to print, scan(Only users with multi-functional printers), or fax(Only users with multi-functional printers) photos, documents, and web pages directly from your smartphone or tablet (see "Using the Samsung Mobile Print App" on page 157).
- **Samsung Mobile Print Pro:** Helps users to get an authentication easily. This app provides one way of getting a user authentication using your mobile device (see "Using the Samsung Mobile Print Pro App" on page 152).

Using the NFC feature (Optional)


- **Samsung Mobile Print Manager:** Enables users to use cloning and wireless setup features using your mobile device (see "Using the Samsung Mobile Print Manager App" on page 154).

Using the Samsung Mobile Print Pro App

You can use it to get an authentication/registration from the **Samsung Mobile Print Pro** app.

Authentication from the mobile device

- 1 Check that NFC and Wi-Fi Direct enabled features are on your mobile device and Wi-Fi Direct feature is enabled on your printer.
- 2 Open **Samsung Mobile Print Pro** app.

 If you do not have **Samsung Mobile Print Pro** installed on your cellphone, go to the application store (Samsung Apps, Play Store) on your mobile device, and just search for download the app and try again.

- 3 Type in the **ID** and **Password**.

If necessary, type in the ID and Password to log in. If it's your first time logging into the printer, type in the below default ID and password. We recommend you to change the default password for security reasons.

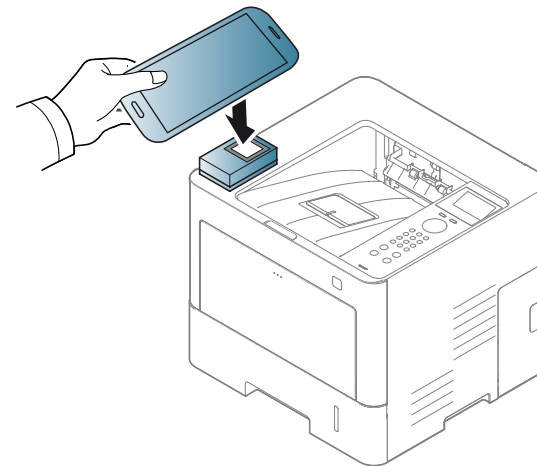
- **ID: admin**
- **Password: sec00000**



If you want to create a new user or change the password, see "Security tab" on page 208.

- 4 Tag your mobile device (usually located on the back of the mobile device) over the NFC tag (NFC) on your printer.

Wait few seconds for the mobile device to connect to the printer.



Using the NFC feature (Optional)




For some mobile devices, NFC tag might not be located at the back of the mobile device. Check the location of the NFC antenna on your mobile device before tagging.

Registration from the mobile device

- 1 Check that NFC and Wi-Fi Direct enabled features are on your mobile device and Wi-Fi Direct feature is enabled on your printer.
- 2 Open **Samsung Mobile Print Pro** app.



If you do not have **Samsung Mobile Print Pro** installed on your cellphone, go to the application store (Samsung Apps, Play Store) on your mobile device, and just search for download the app and try again.

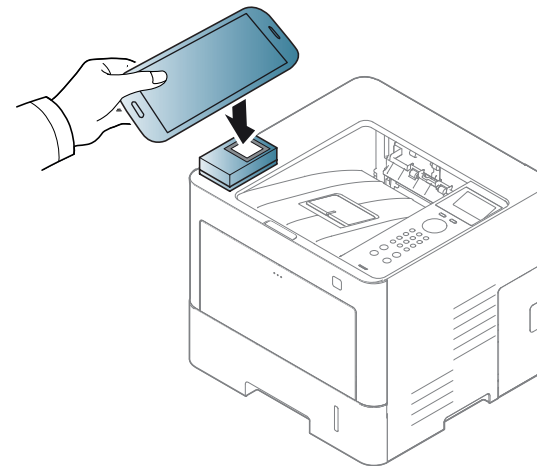
- 3 Press the  icon on the **Samsung Mobile Print Pro** screen.
- 4 Select **On** from the **Phone login set as default** menu.
- 5 Mobile device ID appears on the **Samsung Mobile Print Pro** screen. Press **Registration**.
- 6 Type in the **ID**, **Password**, **Domain** and **Password**, then click **OK**.



- If you want to create a new user or change the password, see "Security tab" on page 208.
- **Passcode** is for when the administrator chooses **Two-Factor Authentication** method. You need to enter a passcode for authentication. Password and passcode should be different. You can select **Two-Factor Authentication** from the SyncThru™ Web Service, select **Security > User Access Control > Authentication > Authentication Method > Options** button > **Login Method > Two-Factor Authentication**.

- 7 Tag your mobile device (usually located on the back of the mobile device) over the NFC tag (NFC) on your printer.

Wait few seconds for the mobile device to connect to the printer.



Using the NFC feature (Optional)



For some mobile devices, NFC tag might not be located at the back of the mobile device. Check the location of the NFC antenna on your mobile device before tagging.

8 Registration complete message appears on the printer's touch screen.

Using the Samsung Mobile Print Manager App

If you have more than one printer and need to set the same settings on each printer, you can easily do it using the **Samsung Mobile Print Manager** app. Touch your cellphone on the NFC tag on your printer to copy the settings and tap on the printer you want to set the setting.



When exporting the data, you can save more than one data. When importing the data, you can select the data from the list and import.

Exporting(Copying the setting to your mobile device)

- 1 Check that NFC and Wi-Fi Direct features are enabled on your mobile device and Wi-Fi Direct feature is enabled on your printer (see "Setting the Wi-Fi Direct for mobile printing" on page 148).
- 2 Open **Samsung Mobile Print Manager** from your mobile device.



If you do not have **Samsung Mobile Print Manager** installed on your cellphone, go to the application store (Samsung Apps, Play Store) on your mobile device, and just search for download the app and try again.

- 3 Press **Export**.
- 4 Type in the **ID** and **Password**, then click **OK**.

If necessary, type in the ID and Password to log in. If it's your first time logging into the printer, type in the below default ID and password. We recommend you to change the default password for security reasons.

- **ID: admin**
- **Password: sec00000**

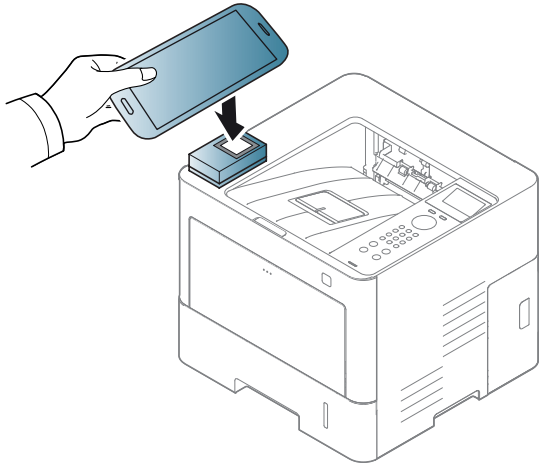


If you want to create a new user or change the password, see "Security tab" on page 208.

Using the NFC feature (Optional)

- 5 Tag your mobile device (usually located on the back of the mobile device) over the NFC tag (NFC) on your printer.

Wait few seconds for the mobile device to connect to the printer.



- For some mobile devices, NFC tag might not be located at the back of the mobile device. Check the location of the NFC tag on your mobile device before tagging.
- While cloning, the machine is locked.

- 6 Select the settings you want to apply and press **OK**.
- 7 Follow the instruction on the mobile device's screen.

Importing (Applying the settings to the machine)

- 1 Check that NFC and Wi-Fi Direct features are enabled on your mobile device and Wi-Fi Direct feature is enabled on your printer (see "Setting the Wi-Fi Direct for mobile printing" on page 148).
- 2 Open **Samsung Mobile Print Manager** from your mobile device.



If you do not have **Samsung Mobile Print Manager** installed on your cellphone, go to the application store (Samsung Apps, Play Store) on your mobile device, and just search for download the app and try again.

- 3 Press **Import**.
- 4 Type in the **ID** and **Password**, then click **OK**.

If necessary, type in the ID and Password to log in. If it's your first time logging into the printer, type in the below default ID and password. We recommend you to change the default password for security reasons.

- **ID: admin**
- **Password: sec00000**



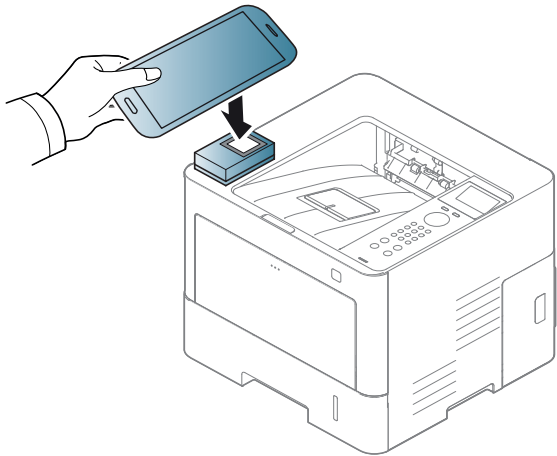
If you want to create a new user or change the password, see "Security tab" on page 208.

- 5 Select the settings you want to copy.

Using the NFC feature (Optional)

- 6 Follow the instruction on the mobile device's screen.
- 7 Tag your mobile device (usually located on the back of the mobile device) over the NFC tag (NFC) on your printer.

Wait few seconds for the mobile device to connect to the printer.



- For some mobile devices, NFC tag might not be located at the back of the mobile device. Check the location of the NFC antenna on your mobile device before tagging.
- While cloning, the machine is locked.

Wireless Setup

You can copy wireless setting from your phone to your printer by touching your mobile device on the NFC tag on your printer.

- 1 Check that NFC and Wi-Fi Direct features are enabled on your mobile device and Wi-Fi Direct feature is enabled on your printer (see "Setting the Wi-Fi Direct for mobile printing" on page 148).
- 2 Open **Samsung Mobile Print Manager** from your mobile device.



If you do not have **Samsung Mobile Print Manager** installed on your cellphone, go to the application store (Samsung Apps, Play Store) on your mobile device, and just search for download the app and try again.

- 3 Mobile device **Samsung Mobile Print Manager** screen appears.
Press **Wi-Fi Setup**.

- 4 Type in the **ID** and **Password**, then click **OK**.

If necessary, type in the ID and Password to log in. If it's your first time logging into the printer, type in the below default ID and password. We recommend you to change the default password for security reasons.

- **ID: admin**
- **Password: sec00000**




If you want to create a new user or change the password, see "Security tab" on page 208.

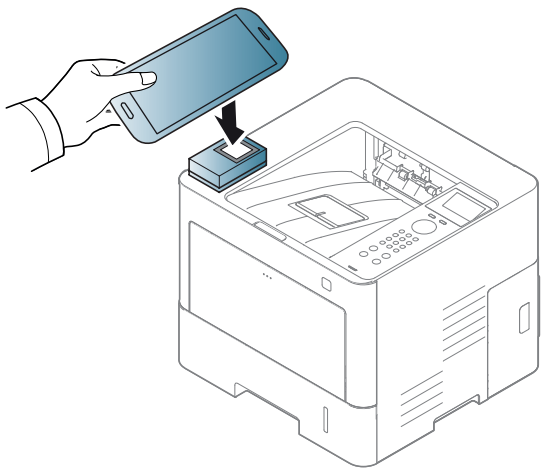
Using the NFC feature (Optional)


- 5 If the access point (or wireless router) is connected to the connection confirmation window appears, then click **OK**.

If the access point (or wireless router) not connection, select the desired access point (or wireless router) and click **OK**, then click **OK**.

- 6 Tag your mobile device (usually located on the back of the mobile device) over the NFC tag() on your printer.

Wait few seconds for the mobile device to connect to the printer.



-  For some mobile devices, NFC tag might not be located at the back of the mobile device. Check the location of the NFC antenna on your mobile device before tagging.

- 7 Follow the instruction on the mobile device's screen.

Using the Samsung Mobile Print App

Samsung Mobile Print is a free application that enables users to print, scan(Only users with multi-functional printers), or fax(Only users with multi-functional printers) photos, documents, and web pages directly from your smartphone or tablet.


Printing

- 1 Check that NFC and Wi-Fi Direct features are enabled on your mobile device and Wi-Fi Direct feature is enabled on your printer.
- 2 Open **Samsung Mobile Print** app.



If you do not have **Samsung Mobile Print** installed on your cellphone, go to the application store (Samsung Apps, Play Store, App Store) on your mobile device, and just search for download the app and try again.

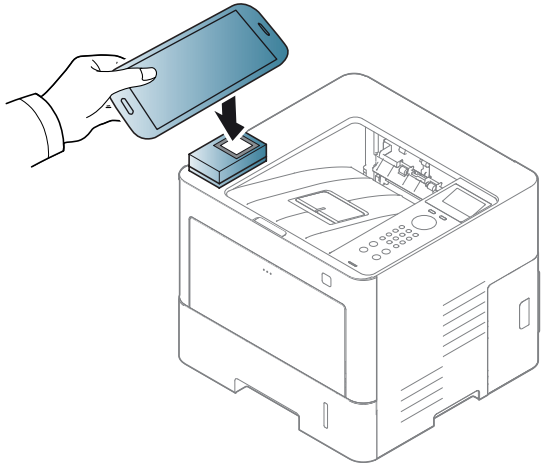
- 3 Select print mode.
- 4 Select the content you want to print.


If necessary, change the print option by pressing the  icon.

Using the NFC feature (Optional)

- 5 Tag your mobile device (usually located on the back of the mobile device) over the NFC tag (NFC) on your printer.


Wait a few seconds for the mobile device to send a job to the printer.



 For some mobile devices, NFC tag might not be located at the back of the mobile device. Check the location of the NFC antenna on your mobile device before tagging.

- 6 The printer starts printing.

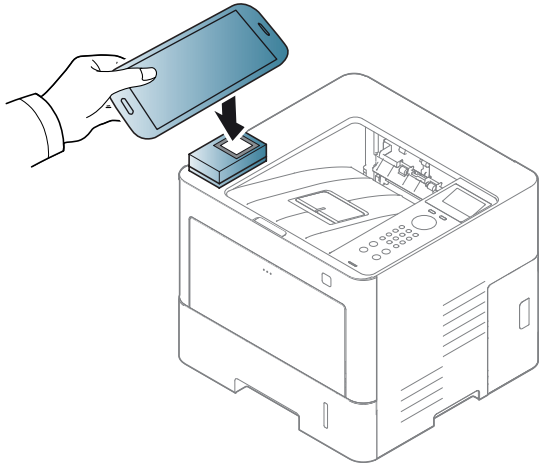
Registering Google Cloud Printer

- 1 Check that NFC and Wi-Fi Direct features are enabled on your mobile device and Wi-Fi Direct feature is enabled on your printer (see "Setting the Wi-Fi Direct for mobile printing" on page 148).
- 2 Open **Samsung Mobile Print** app.
 If you do not have **Samsung Mobile Print** installed on your cellphone, go to the application store (Samsung Apps, Play Store, App Store) on your mobile device, and just search for download the app and try again.
- 3 Select device status icon.
- 4 Select **Google Cloud Print > Register Google Cloud Printer**.

Using the NFC feature (Optional)

- 5 Tag your mobile device (usually located on the back of the mobile device) over the NFC tag (NFC) on your printer.

Wait a few seconds for the mobile device to connect to the printer.



For some mobile devices, NFC tag might not be located at the back of the mobile device. Check the location of the NFC antenna on your mobile device before tagging.

- 6 Confirm your printer in pop-up window.
Now your printer is registered with Google Cloud Print™ service.

Supported Mobile Apps

Available Apps

- **Samsung Mobile Print:** **Samsung Mobile Print** is a free application that enables users to print, scan(Only users with multi-functional printers), or fax(Only users with multi-functional printers) photos, documents, and web pages directly from your smartphone or tablet. **Samsung Mobile Print** is not only compatible with your Android and iOS smart phones but also with your iPod Touch and tablet PC. It connects your mobile device to a network connected Samsung printer or to a wireless printer through a Wi-Fi access point. Installing a new driver or configuring network settings isn't necessary – just simply install the **Samsung Mobile Print** application, and it will automatically detect compatible Samsung printers. Besides printing photos, web pages, and PDFs, scanning is also supported. If you have a Samsung multifunction, scan any document into a JPG, PDF, or PNG format for quick and easy viewing on your mobile device (see "Using the Samsung Mobile Print App" on page 157).
- **Samsung Mobile Print Pro:** Helps users to get an authentication easily. This app provides one way of getting a user authentication using your mobile device (see "Using the Samsung Mobile Print Pro App" on page 152).
- **Samusng Mobile Print Manager:** Enables users to use cloning and wireless setup features using your mobile device (see "Using the Samsung Mobile Print Manager App" on page 154, "Wireless Setup" on page 156).

Downloading Apps

To download apps, go to the application store (Play Store, App Store) on your mobile device, and just search for "**Samsung Mobile Print /Samsung Mobile Print Pro/Samusng Mobile Print Manager.**" You can also visit iTunes for Apple devices on your computer.

- **Samsung Mobile Print**
 - **Android:** Search for **Samsung Mobile Print** from Play Store, and then download the app.
 - **iOS:** Search for **Samsung Mobile Print** from App Store, and then download the app.
- **Samsung Mobile Print Pro/Samusng Mobile Print Manager**
 - **Android:** Search for **Samsung Mobile Print Pro** or **Samusng Mobile Print Manager** from Play Store, and then download the app.

Supported Mobile OS

- **Samsung Mobile Print**
 - Android OS 2.3 or higher
 - iOS 5.0 or higher
- **Samsung Mobile Print Pro/Samusng Mobile Print Manager**
 - NFC and Wi-Fi Direct enabled, supported mobile apps installed mobile device with Android 4.0 or higher



Only Mopria-certified machines can use the Mopria feature. Check the box that your machine came in for the Mopria-certified logo.



Mopria™ Print Service is a mobile printing solution that enhances the new print functionality on any Android phone or tablet (Android version 4.4 or later). With this service, you can connect and print to any Mopria-certified printer on the same network as your mobile device without additional set-up. Many native Android apps support printing, including Chrome, Gmail, Gallery, Drive and Quickoffice.

Setting up the machine for Mopria printing

Bonjour(mDNS) and IPP protocols are required on your machine to use the **Mopria** feature. Perform the following steps to enable the **Mopria** feature.

- 1 Ensure that the machine is connected to the network.
- 2 On your computer, open a web browser (Internet Explorer, Safari, or Firefox) and type the IP address of the machine in the address bar. Then, press Enter.

For example,



- 3 Click **Login** in the top right corner of the SyncThru™ Web Service website.
- 4 Type in your **ID** and **Password** and select the **Domain**. then click **LOGIN**. Use the same login ID, password, and domain as when your log in from the machine (see "Using SyncThru™ Web Service" on page 207.)



If you want to create a new user or change the password, see "Security tab" on page 208.

- 5 When the SyncThru™ Web Service window opens, click **Settings** > **Network Settings** > **Standard TCP/IP, LPR, IPP** > **IPP**. Then, select **Enable**.
- 6 Click **Settings** > **Network Settings** > **mDNS**. Then, select **Enable**.
- 7 Click **Security** > **System Security** > **Feature Management** > **Mopria**. Then, select **Enable**.

Setting up Mopria on your mobile device

If you do not have **Mopria Print Service** app installed on your mobile device, open to the app store (Play Store, App Store) on your mobile device, search for, **Mopria Print Service**, and then download and install the app.

- 1 In the **Settings** menu of your Android device, tap **Printing**.



The location of this option may differ depending on your mobile device. If you cannot locate the **Printing** option, refer to the user's manual for your mobile device.

- 2 Under **Print Services**, tap **Mopria Print Service**.
- 3 Tap the **On/Off** slider to enable the **Mopria Print Service**.

Printing via Mopria

To print via Mopria on an Android device:

- 1 Open the email, photo, web page, or document that you want to print.
- 2 Tap **Print** on the menu in the app.
- 3 Select **your printer**, and then configure the print options.
- 4 Touch **Print** again to print the document.



To cancel a print job: Select and delete the document from the print queue in the **Notification Bar**.

AirPrint



Only AirPrint certified machines can use the AirPrint feature. Check the box your machine came in for the AirPrint certified mark.



AirPrint allows you to directly from iPhone, iPad, and iPod touch running the latest version of iOS.

Setting up AirPrint

Bonjour(mDNS) and IPP protocols are required on your machine to use the **AirPrint** feature. You can enable the **AirPrint** feature by one of the following methods.

- 1 Check whether the machine is connected to the network.
- 2 Start a web browser such as Internet Explorer, Safari, or Firefox and enter your machine's new IP address in the browser window.

For example,



- 3 Click **Login** in the upper right of the SyncThru™ Web Service website.
- 4 Type in the **ID** and **Password**, then click **Login**. If it's your first time logging into SyncThru™ Web Service, type in the below default ID and password. We recommend you to change the default password for security reasons.
 - **ID: admin**
 - **Password: sec00000**




If you want to create a new user or change the password, see "Security tab" on page 208.


- 5 When the **SyncThru™ Web Service** window opens, click **Settings > Network Settings**.
- 6 Click **AirPrint**.

Printing via AirPrint

For example, the iPad manual provides these instructions:

- 1 Open your email, photo, web page, or document you want to print.
- 2 Touch the action icon().
- 3 Select **your printer driver name** and option menu to set up.
- 4 Touch **Print** button. Print it out.




Cancelling print job: To cancel the printing job or view the print summary, click the print center icon () in multitasking area. You can click cancel in the print center.

Samsung Cloud Print

Samsung Cloud Print is a free cloud service that allows you to print or scan from your smartphone or tablet to your Samsung printer or MFP. After installing the Samsung Cloud Print app, you can register with the Samsung Cloud Print service just using your mobile number for authentication. No other account login is required, although you can link the app to your Samsung Account if you wish.



If you press the () button from Samsung Cloud Print app, Your mobile device and printer or MFP can be paired , QR code, or by manually entering its MAC address. Once paired, you can print or scan from anywhere and everywhere.

Registering your Printer to Samsung Cloud server.

Registering from Web Browser



- Make sure the printer machine is turned on and connected to a wired or wireless network that has access to the Internet.

- 1 Open Web browser.
- 2 Enter your printer's IP address in the address field and press the Enter key or click **Go**.

- 3 Click **Login** in the upper right corner of the SyncThru™ Web Service website.
- 4 If it's your first time logging into **SyncThru™ Web Service** you need to log-in as an administrator. Type in the below default **ID** and **Password**. We recommend you to change the default password for security reasons.
 - **ID: admin**
 - **Password: sec00000**



If you want to create a new user or change the password, see "Security tab" on page 208.

- 5 When the **SyncThru™ Web Service** window opens, click **Settings > Network Settings > Samsung Cloud Print**.
- 6 Enable Samsung Cloud Print Protocol.
- 7 Now your printer is registered with Samsung Cloud Print service.

Samsung Cloud Print

Printing with Samsung Cloud Print



Make sure the printer is turned on and connected to a wired or wireless network that has access to the Internet.


Registering a printer from an application on mobile device

The following steps are an example of using the **Samsung Cloud Print** app from Android mobile phone.

- 1 Open **Samsung Cloud Print** app.



If you do not have **Samsung Cloud Print** app installed on your cellphone, go to the application store (Samsung Apps, Play Store, App Store) on your mobile device, and just search for download the app and try again.

- 2 Press the () button from Samsung Cloud Print app.
- 3 Your mobile device and printer or MFP can be paired NFC tapping, QR code or by manually entering its MAC address.

Printing from an application on mobile device

The following steps are an example of using the **Samsung Cloud Print** app from Android mobile phone.

- 1 Open **Samsung Cloud Print** app.



If you do not have **Samsung Cloud Print** app installed on your cellphone, go to the application store (Samsung Apps, Play Store, App Store) on your mobile device, and just search for download the app and try again.

- 2 Tap the option check button of the document that you want to print.
- 3 Set the printing options if you want.
- 4 Tap **Send Job**.

Google Cloud Print™

Google Cloud Print™ is a service that allows you to print to a printer using your smart phone, tablet, or any other web-connected devices. Just register your Google account with the printer, and you are ready to use the Google Cloud Print™ service. You can print your document or email with Chrome OS, Chrome browser, or a Gmail™/ Google Docs™ application on your mobile device, so you don't need to install the printer driver on the mobile device. Refer to the Google website (<http://www.google.com/cloudprint/learn/> or <http://support.google.com/cloudprint>) for more information about Google Cloud Print™.

Registering your Google account to the printer



- Make sure the printer machine is turned on and connected to a wired or wireless network that has access to the Internet.
- You should create your Google account in the advance.

- 1 Open the Chrome browser.
- 2 Visit www.google.com.
- 3 Sign in to the Google website with your Gmail™ address.
- 4 Enter your printer's IP address in the address field and press the Enter key or click **Go**.

- 5 Click **Login** in the upper right corner of the SyncThru™ Web Service website.
- 6 If it's your first time logging into **SyncThru™ Web Service** you need to log-in as an administrator. Type in the below default **ID** and **Password**. We recommend you to change the default password for security reasons.
 - **ID: admin**
 - **Password: sec00000**



If the network environment is using a proxy server, you need to configure the proxy's IP and port number from **Settings > Network Settings > Google Cloud Print > Proxy Setting**. Contact your network service provider or network administrator for more information.

- 7 When the **SyncThru™ Web Service** window opens, click **Settings > Network Settings > Google Cloud Print**.
- 8 Enter your printer's name and description.
- 9 Click **Register**.
The confirmation pop-up window appears.



If you set the browser to block pop-ups, the confirmation window will not appear. Allow the site to show pop-ups.

- 10 Click **Finish printer registration**.

Google Cloud Print™

11 Click **Manage your printers**.

Now your printer is registered with Google Cloud Print™ service. Google Cloud Print™-ready devices will appear in the list.

Printing with Google Cloud Print™

The printing procedure varies depending on the application or the device you are using. You can see the application list that supports Google Cloud Print™ service.



Make sure the printer is turned on and connected to a wired or wireless network that has access to the Internet.




Printing from an application on mobile device

The following steps are an example of using the Google Docs™ app from Android mobile phone.

1 Install the Cloud Print application on your mobile device.




If you do not have the application, download it from the application store such as Android Market or App Store.

- 2 Access the Google Docs™ application from your mobile device.
- 3 Tap the option  button of the document that you want to print.
- 4 Tap the send  button.
- 5 Tap the Cloud Print  button.
- 6 Set the printing options if you want.
- 7 Tap **Click here to Print**.

Printing from the Chrome browser

The following steps are an example of using the Chrome browser.

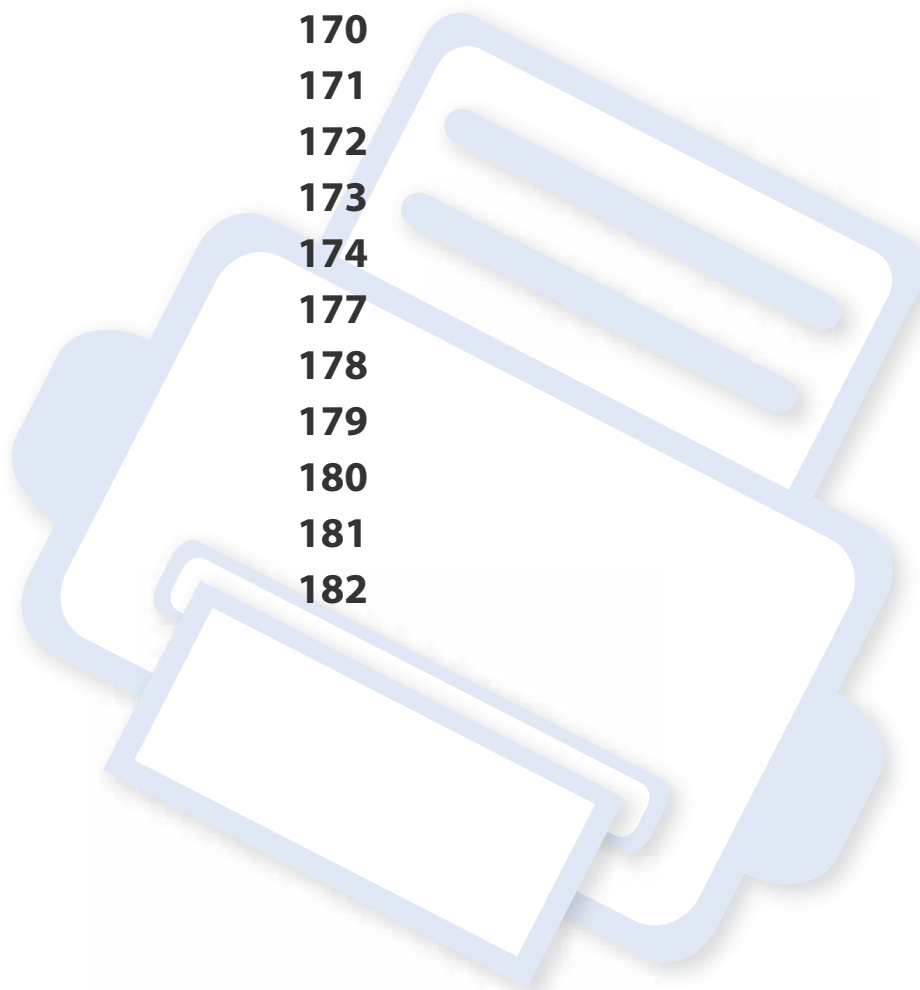
- 1 Run Chrome.
- 2 Open the document or email that you want to print.
- 3 Click the wrench icon  in the browser's top right corner.
- 4 Click **Print**. A new tab for printing appears.
- 5 Select **Print with Google Cloud Print**.
- 6 Click the **Print** button.



3. Useful Setting Menus

This chapter explains how to browse the current status of your machine, and the method of setting for advanced machine setup.

- **Before you begin reading a chapter** 169
- **Information** 170
- **Layout** 171
- **Paper** 172
- **Graphic** 173
- **System Setup** 174
- **Emulation** 177
- **Image Management** 178
- **Network** 179
- **Direct USB** 180
- **Job Management** 181
- **Admin Setup** 182



Before you begin reading a chapter

This chapter explains all the features available for this series' models to help users easily understand the features.

You can check the features available for each model in the Basic Guide (see "Menu overview" on page 26).

The following are tips for using this chapter

- The control panel provides access to various menus to set up the machine or use the machine's functions. These menus can be accessed by pressing **Menu** (☰) or from the touch screen.
- Some menus may not appear on the display depending on options or models. If so, it is not applicable to your machine.
- For models that do not have the **Menu** (☰).
- Some menu names may differ from your machine depending on its options or the models.


Information



Some menus may not appear in the display depending on options or models. If so, it is not applicable to your machine (see "Menu overview" on page 26).

To change the menu options:

- Press **Menu**(F₉) > **Information** on the control panel.

Item	Description
Configuration	<p>Prints a report on the machine's overall configuration.</p> <p> If the configuration report includes a QR code, then you can scan the code with your smartphone or tablet to see information about the printer. You can also use the QR code to register the printer in Samsung Cloud Print™ (see "Samsung Cloud Print" on page 164).</p>
Demo Page	Prints the demo page to check whether your machine is printing properly or not.
Network Configuration	Prints a report on the machine's current network configuration.
Supplies Information	Prints supplies' information page.

Item	Description
Usage Counter	Prints a usage page. The usage page contains the total number of pages printed.
Account	Prints a report of printout counts for each user. This is only available when Job Accounting is enabled from the SyncThru™ Web Admin Service.
Menu Map	Prints the menu map which shows the layout and current settings of this machine.
PCL Font	Prints the PCL font list.
PS Font	Prints the PS font list.



Layout

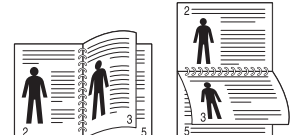
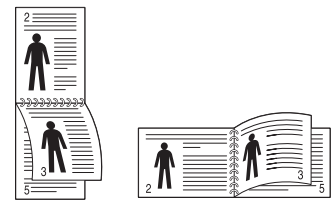


Some menus may not appear in the display depending on options or models. If so, it is not applicable to your machine (see "Menu overview" on page 26).

To change the menu options:

- Press **Menu**() > **Layout** on the control panel.

Item	Description
Orientation	<p>Selects the direction in which information is printed on a page.</p> <ul style="list-style-type: none"> • Portrait  <ul style="list-style-type: none"> • Landscape 

Item	Description
Margin	<ul style="list-style-type: none"> • Common Margin: Sets the margin for each side of paper. • MP Tray: Sets the paper margins in multi-purpose tray. • <Tray X>: Sets the paper margins for the paper trays. • Emulation Margin: Sets the paper margins for emulation print page.
Duplex	<p>To print on both sides of the paper, choose the binding edge.</p> <ul style="list-style-type: none"> • Off: Disables this option. • Long Edge  <ul style="list-style-type: none"> • Short Edge 


Paper



Some menus may not appear in the display depending on options or models. If so, it is not applicable to your machine (see "Menu overview" on page 26).

To change the menu options:

- Press **Menu**() > **Paper** on the control panel.

Item	Description
Copies	Selects the number of copies.
MP Tray/ Tray[x]^a	<ul style="list-style-type: none">• Paper Size: Selects the paper size currently loaded in the tray.• Paper Type: Selects the paper type currently loaded in the tray.
Paper Source	Sets the default paper tray to use. <div data-bbox="425 1018 1081 1177"> Auto: Automatically locates the tray with the same sized paper as an original.</div>
Tray Confirm	Activates the tray confirmation message. If you open and close a tray, a window asking you whether to set the paper size and type for the tray just opened appears.

a. [tray type] indicates the tray number.

Graphic



Some menus may not appear in the display depending on options or models. If so, it is not applicable to your machine (see "Menu overview" on page 26).

To change the menu options:

- Press **Menu**() > **Graphic** on the control panel.

Item	Description
Resolution	Specifies the number of dots printed per inch (dpi). The higher the setting, the sharper printed characters and graphics.
Clear Text	Prints text darker than on a normal document.
Edge Enhancement	Allows user to enhance sharpness of text and graphics for improving readability.
Auto CR	Allows you to append the required carriage return to each line feed, which is useful for Unix or DOS users.

System Setup



Some menus may not appear in the display depending on options or models. If so, it is not applicable to your machine (see "Menu overview" on page 26).


To change the menu options:

- Press **Menu**() > **System Setup** on the control panel.

Item	Description
Date & Time	Sets the date and time.
Date Format	Sets the date format.
Clock Mode	Selects the format for displaying time between 12 hours and 24 hours.
Language	Sets the language of the text that appears on the control panel display.
Default Paper	You can set the default paper size to use.
Power Save	Sets how long the machine waits before going to power save mode. When the machine does not receive data for an extended period of time, power consumption is automatically lowered.


Item	Description
Wakeup Event	When this option is On , you can wake up the machine from the power saving mode with the following actions: <ul style="list-style-type: none">• Loading paper in a tray.• Opening or closing the front cover.• Pulling a tray out or pushing a tray in.
Job Timeout	When there is no input for a certain period of time, the machine cancels the current job. You can set the amount of time the machine will wait before canceling the job.
Held Job Timeout	You can set the time to hold the temporarily stopped job.
Altitude Adjustment	Optimize print quality according to the machine's altitude ("Altitude adjustment" on page 184).
Humidity	Optimizes print quality according to the humidity in the environment.
Job Rescheduling	When a job is paused due to a paper mismatch or paper empty error, the Job Rescheduling feature switches from the paused job to the next job if the next job can be printed without any paper errors.



System Setup

Item	Description
Auto Continue	<p>Determine whether or not the machine continues printing when it detects the paper does not match the paper settings.</p> <ul style="list-style-type: none"> • 0 Sec: This option allows you to continue printing when the paper size you have set is mismatched with the paper in the tray. • 30 Sec: If a paper mismatch occurs, an error message will display. The machine waits for about 30 second, then automatically clear the message and continue printing. • Off: If a paper mismatch occurs, the machine waits until you insert the correct paper.
Auto Tray Switch	<p>Determine whether or not the machine continues printing when it detects the paper does not match. For example, if both tray 1 and tray 2 are filled with the same size paper, the machine automatically prints from tray 2 after the tray 1 runs out of paper.</p> <div style="border: 1px solid #ccc; padding: 5px; margin-top: 10px;">  This option does not appear if you selected Auto for Paper Source from printer driver. </div>
Paper Substitution	<p>Automatically substitutes the printer driver's paper size to prevent the paper mismatch between Letter and A4. For example, if you have A4 paper in the tray but you set the paper size to Letter in the printer driver, the machine prints on A4 paper and vice versa.</p>

Item	Description
Tray Protection	<p>Decides to use or not use the Auto Tray Switch feature for a certain tray. If you set tray 1 to on, for example, then tray 1 is excluded during tray switching.</p>
Tray Mode	<ul style="list-style-type: none"> • Dynamic: If you open and close the tray when a paper mismatch occurs, the paper settings (size and type) for that tray automatically change to the settings required for the job. (When you open and close the tray in the Dynamic mode, the machine presumes that the paper in the tray was replaced with the size and type required for the job.)
Skip Blank Pages	<p>The printer detects the printing data from computer whether a page is empty or not. You can set to print or skip the blank page.</p>
Maintenance	<ul style="list-style-type: none"> • CLR Empty Msg.: When toner cartridge is empty, this option appears. You can clear the empty message. • Supplies Life: Allows you to check how many pages are printed and how much toner is left in the cartridge. • RAM Disk: Enables/disables RAM disk to manage jobs. • Paper Low Alert: Allows you to set the alarm for when the paper is low.

System Setup

Item	Description
Toner Save	Activating this mode extends the life of your toner cartridge and reduces your cost per page beyond what one would experience in the normal mode, but it reduces print quality.
Quiet Mode	You can reduce the printing noise by turning this menu on. However, the printing speed and quality may be declined.
Eco Settings	<p>Allows you to save print resources and enables eco-friendly printing (see "Eco printing" on page 48).</p> <ul style="list-style-type: none">• Default Mode: Select whether to turn the Eco mode on or off. <div data-bbox="380 826 1079 1027"> On Force: Sets the Eco mode on. If a user wants to turn the Eco mode off, the user needs to enter the password.</div> <ul style="list-style-type: none">• Select Template: Selects the eco template set from the SyncThru™ Web Service.

Item	Description
Auto Power Off	<p>Turns power off automatically when the machine has been in power save mode for the length of time set in Auto Power Off > On > Timeout.</p> <div data-bbox="1491 440 2190 944"><ul style="list-style-type: none">• To turn the machine on again, press the  (Power/Wake Up) button on the control panel (make sure the main power switch is on).• If you run the printer driver or Samsung Easy Printer Manager, the time automatically extends.• While the machine is connected to the network or working on a print job, Auto Power Off feature doesn't work.</div>
Filing Policy	If the memory already has the same name when you entered a new file name, you can rename or overwrite it.

Emulation



Some menus may not appear in the display depending on options or models. If so, it is not applicable to your machine (see "Menu overview" on page 26).

To change the menu options:

- Press **Menu**(F3) > **Emulation** on the control panel.

Item	Description
Emulation Type	The machine language defines how the computer communicates with the machine.
Setup	Sets the detailed settings for the selected emulation type.

Image Management



Some menus may not appear in the display depending on options or models. If so, it is not applicable to your machine (see "Menu overview" on page 26).

To change the menu options:

- Press **Menu**() > **Image Management** on the control panel.

Item	Description
Custom Color	<p>This menu allows you to adjust contrast, color by color.</p> <ul style="list-style-type: none">• Default: Optimizes colors automatically.• Print Density: Allows you to manually adjust color density for print. Adjust the print density. <p>It is recommended to use the Default setting for best color quality.</p>

Network



Some menus may not appear in the display depending on options or models. If so, it is not applicable to your machine (see "Menu overview" on page 26).

To change the menu options:

- Press **Menu**(F3) > **Network** on the control panel.



You can also use this feature from the SyncThru™ Web Service. Open the Web browser from your networked computer and type the IP address of your machine. When SyncThru™ Web Service opens, click **Settings** > **Network Settings** (see "Using SyncThru™ Web Service" on page 207).

Option	Description
TCP/IP (IPv4)	Selects the appropriate protocol and configure parameters to use the network environment (see "Setting IP address" on page 127). There are lots of parameters to be set. If you are not sure, leave as is, or consult the network administrator.
TCP/IP (IPv6)	Selects this option to use the network environment through IPv6 (see "IPv6 configuration" on page 137).

Option	Description
Ethernet	Configure the ethernet port and network transmission speed. Turn the power off and on after you change this option.
802.1x	You can select the user authentication for network communication. For detailed information consult the network administrator.
Wi-Fi	Select this option to use the wireless network (see "Wireless network setup(Optional)" on page 139).
Protocol Management	You can activate or deactivate the protocols. Turn the power off and on after you change this option.
Network Configuration	This list shows information on your machine's network connection and configuration (see "Printing a network configuration report" on page 127).
Clear Setting	Reverts the network settings to the default values. Turn the power off and on.

Direct USB



Some menus may not appear in the display depending on options or models. If so, it is not applicable to your machine (see "Menu overview" on page 26).

To change the menu options:

Item	Description
Print From	Select a file to print.
File Manage	Select a file to delete. You can format the USB device.
Show Space	Shows the remaining space.

Job Management



Some menus may not appear in the display depending on options or models. If so, it is not applicable to your machine (see "Menu overview" on page 26).

To change the menu options:

Item	Description
Active Job	Displays the list of jobs in progress and pending.
Secure Job	Displays the list of jobs that are secured on the disk
Stored Job	Displays the list of jobs that are stored on the disk.

Admin Setup




- Some menus may not appear in the display depending on options or models. If so, it is not applicable to your machine (see "Menu overview" on page 26).
- You need to enter a password to enter this menu. The default password is **sec00000**.

To change the menu options:

- Press **Menu**() > **Admin Setup** on the control panel.

Item	Description
Stamp	<p>You can apply the stamp feature.</p> <ul style="list-style-type: none">• Stamp Activate: You can activate stamp feature.• Item: You can select the items to print on the printout such as time, date, and etc.• Text Size: You can select the text size such as small, normal, large.• Opacity: You can select the stamp transparency.• Position: Sets the stamp position.
Change Admin Password	Changes the machine's password for accessing the Admin Setup .
Firmware Upgrade	To upgrade the latest firmware, turn this option " On " and then download the firmware file.
Import Setting	Imports data stored on a USB memory stick to the machine (see "Backing up data" on page 53).

Item	Description
Export Setting	Exports data stored on the machine stick to a USB memory (see "Restoring data" on page 53).
Secure Print	<p>You can set the login method of secure print.</p> <div> This option is available when the System Setup > Maintenance > RAM Disk is enabled.</div>
Supplies Management	<ul style="list-style-type: none">• Toner Low Alert: If toner in the cartridge has run out, a message informing the user to change the toner cartridge appears. You can set the option for this message to appear or not.



4. Special Features

This chapter explains special printing features.

- **Altitude adjustment** 184
- **Entering various characters** 185
- **Printing features** 186



- The procedures in this chapter are mainly based on Windows 7.
- It may be necessary to press **OK** to navigate to lower-level menus for some models.

Altitude adjustment

Print quality is affected by atmospheric pressure, which is determined by the height of the machine above sea level. The following information will guide you on how to set your machine for the best print quality.

Before you set the altitude value, determine the altitude where you are.

- **Normal:** 0-1,000 m(3,280 ft)
- **High1:** 1,000 m(3,280 ft)-2,000 m(6,561 ft)
- **High2:** 2,000 m(6,561 ft)-3,000 m(9,842 ft)
- **High3:** 3,000 m(9,842 ft)-4,000 m(13,123 ft)
- **High4:** 4,000 m(13,123 ft)-5,000 m(16,404 ft)

You can set the altitude value from **Device Settings** in Samsung Easy Printer Manager program.

- For Windows and Mac users, you set from **Samsung Easy Printer Manager > Advanced Setting > Device Settings** (see "Using Samsung Easy Printer Manager" on page 214).



- If your machine is connected to the network, you can set the altitude via SyncThru™ Web Service (see "Using SyncThru™ Web Service" on page 207).
- You can also set the altitude in **System Setup > Altitude Adjustment** on the control panel (see "Machine's basic settings" on page 30).

Entering various characters

As you perform various tasks, you may need to enter names and numbers.

Entering alphanumeric characters

Press the button until the correct letter appears on the display. For example, to enter the letter O, press 6, labeled with MNO. Each time you press 6, the display shows a different letter, M, N, O, m, n, o and finally 6. To find the letter that you want to enter, see "Keypad letters and numbers" on page 185.



- You can enter a space by pressing 1 twice.
- To delete the last digit or character, press the arrow button.

Keypad letters and numbers



- Special character sets may differ from your machine depending on its options or the models.
- Some of the follow key values may not appear depending on the job you are doing.

Key	Assigned numbers, letters, or characters
1	@ / . ' 1
2	A B C a b c 2
3	D E F d e f 3
4	G H I g h i 4
5	J K L j k l 5
6	M N O m n o 6
7	P Q R S p q r s 7
8	T U V t u v 8
9	W X Y Z w x y z 9
0	& + - , 0
*	* % ^ _ ~ ! # \$ () [] (These symbols are available when you type for network authentication.)
#	# = ? " : { } < > ; (These symbols are available when you type for network authentication.)

Printing features



- For basic printing features, refer to the Basic Guide (see "Basic printing" on page 45).
- This feature may not be available depending on model or optional goods (see "Features by model" on page 7).

Changing the default print settings

- 1 Click the Windows **Start** menu.
- 2 Select **Control Panel > Devices and Printers**.
- 3 Right-click on your machine.
- 4 Select **Printing preferences**.



If **Printing preferences** has a ►, you can select other printer drivers connected to the selected printer.

- 5 Change the settings on each tab.
- 6 Click **OK**.



If you want to change the settings for each print job, change it in **Printing Preferences**.

Setting your machine as a default machine

- 1 Click the Windows **Start** menu.
- 2 Select **Control Panel > Devices and Printers**.
- 3 Select your machine.
- 4 Right-click your machine and select **Set as Default Printer**.



If **Printing preferences** has a ►, you can select other printer drivers connected to the selected printer.

Printing features

Using advanced print features

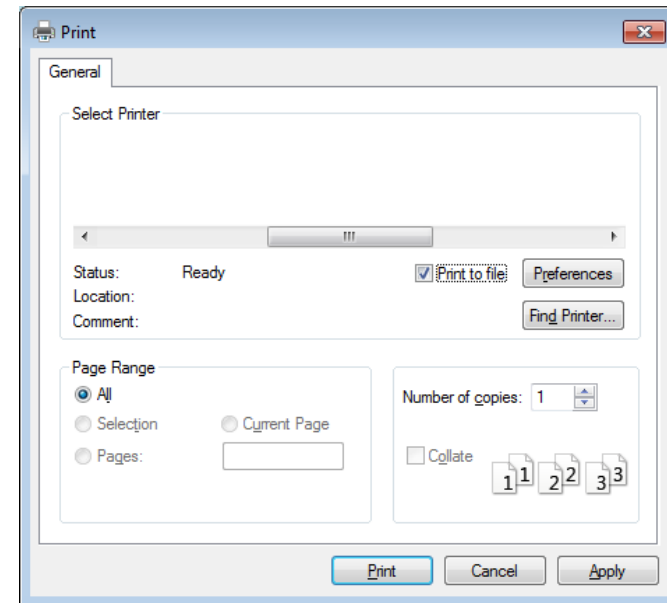


- **XPS printer driver:** used to print XPS file format.
 - See "Features by model" on page 7.
 - The XPS printer driver can be installed only on Windows Vista OS or higher.
 - For models that provide XPS driver from the Samsung website, <http://www.samsung.com> > find your product > Support or downloads.

Printing to a file (PRN)

You will sometimes need to save the print data as a file.

- 1 Check the **Print to file** box in the **Print** window.



- 2 Click **Print**.
- 3 Type in the destination path and the file name, and then click **OK**.
For example, **c:\Temp\file name**.



If you type in only the file name, the file is automatically saved in **My Documents**, **Documents and Settings**, or **Users**. The saved folder may differ, depending on your operating system or the application you are using.

Printing features


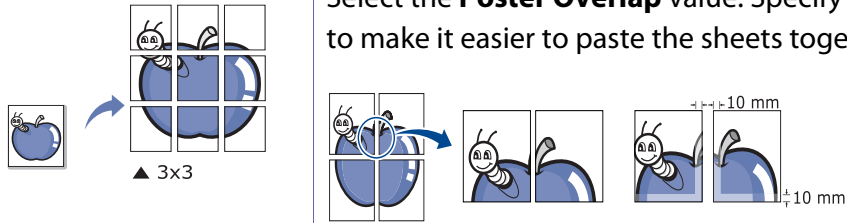
Understanding special printer features

You can use advanced printing features when using your machine.

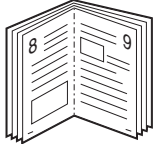




To take advantage of the printer features provided by your printer driver, click **Properties** or **Preferences** in the application's **Print** window to change the print settings. The machine name, that appears in the printer properties window may differ depending on the machine in use.





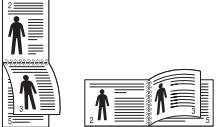

- Some menus may not appear on the display depending on options or models. If so, it is not applicable to your machine.
- Select the **Help** menu or press **F1** on your keyboard and click on any option you want to know about (see "Using help" on page 47).

Item	Description
<p data-bbox="51 770 315 842">Multiple Pages per Side</p> 	<p data-bbox="383 770 2175 847">Selects the number of pages to print on a single sheet of paper. To print more than one page per sheet, the pages will be reduced in size and arranged in the order you specify. You can print up to 16 pages on one sheet.</p>
<p data-bbox="51 1134 259 1166">Poster Printing</p> 	<p data-bbox="383 1093 2130 1169">Prints a single-page document onto 4 (Poster 2x2), 9 (Poster 3x3), or 16 (Poster 4x4) sheets of paper, for the purpose of pasting the sheets together to form one poster-size document.</p> <p data-bbox="383 1189 2190 1265">Select the Poster Overlap value. Specify Poster Overlap in millimeters or inches by selecting the radio button on the upper right of Basic tab to make it easier to paste the sheets together.</p>


Printing features

Item	Description
<p data-bbox="53 373 293 408">Booklet Printing^a</p> 	<p data-bbox="380 272 2195 344">Prints your document on both sides of a sheet of paper and arranges the pages so that the paper can be folded in half after printing to produce a booklet.</p> <div data-bbox="380 395 2195 687"><ul data-bbox="477 427 2195 643" style="list-style-type: none"><li data-bbox="477 427 1854 459">• If you want to make a booklet, you need to print on Letter, Legal, A4, US Folio, or Oficio sized print media.<li data-bbox="477 480 2195 552">• The Booklet Printing option is not available for all paper sizes. Select the available paper Size option under the Paper tab to see what paper sizes are available.<li data-bbox="477 572 2195 643">• If you select an unavailable paper size, this option can be automatically canceled. Select only available paper (paper without  or  mark).</div>
<p data-bbox="53 788 241 860">Double-sided Printing</p>	<p data-bbox="380 724 1798 756">Print on both sides of a sheet of paper (duplex). Before printing, decide how you want your document oriented.</p> <div data-bbox="380 807 2195 922"><p data-bbox="477 839 1447 871">You can use this feature with Letter, Legal, A4, US Folio or Oficio sized paper</p></div>

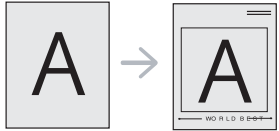

Printing features

Item	Description
Double-sided Printing	<p data-bbox="398 311 2197 395"> Some menus may not appear on the display depending on options or models. If so, it is not applicable to your machine.</p> <ul data-bbox="380 422 2184 558" style="list-style-type: none">• Printer Default: If you select this option, this feature is determined by the settings you have selected on the control panel of the machine.• None: Disables this feature.• Long Edge: This option is the conventional layout used in bookbinding.  <ul data-bbox="380 718 1299 758" style="list-style-type: none">• Short Edge: This option is the conventional layout used in calendars.  <ul data-bbox="380 933 1691 973" style="list-style-type: none">• Reverse Double-Sided Printing: Check this option to reverse the print order when duplex printing.
Paper Options 	<p data-bbox="380 1005 2197 1077">Changes the size of a document to appear larger or smaller on the printed page by entering in a percentage by which to enlarge or decrease the document.</p>

Printing features

Item	Description
Watermark 	The watermark option allows you to print text over an existing document. For example, you use it when you want to have large gray letters reading "DRAFT" or "CONFIDENTIAL" printed diagonally across the first page or all pages of a document.
Watermark (Creating a watermark)	<ul style="list-style-type: none">a To change the print settings from your software application, access Printing Preferences.b Click the Advanced tab, select Edit from the Watermark drop-down list. The Edit Watermarks window appears.c Enter a text message in the Watermark Message box. You can enter up to 256 characters. The message displays in the preview window.
Watermark (Editing a watermark)	<ul style="list-style-type: none">a To change the print settings from your software application, access Printing Preferences.b Click the Advanced tab, select Edit from the Watermark drop-down list. The Edit Watermarks window appears.c Select the watermark you want to edit from the Current Watermarks list and change the watermark message and options.d Click Update to save the changes.e Click OK or Print until you exit the Print window.
Watermark (Deleting a watermark)	<ul style="list-style-type: none">a To change the print settings from your software application, access Printing Preferences.b Click the Advanced tab, select Edit from the Watermark drop-down list. The Edit Watermarks window appears.c Select the watermark you want to delete from the Current Watermarks list and click Delete.d Click OK or Print until you exit the Print window.



Printing features

Item	Description
<p data-bbox="53 392 174 427">Overlay^a</p>  <p>The diagram shows a square box containing the letter 'A' on the left. An arrow points to the right, where a document page is shown with the letter 'A' overlaid on it. The document page has a header 'WORLD B B B B' and a footer 'WORLD B B B B'.</p>	<p data-bbox="380 272 1603 304">This option is available only when you use the PCL/SPL printer driver (see "Software" on page 7).</p> <p data-bbox="380 328 2159 485">An overlay is text and/or images stored in the computer hard disk drive (HDD) as a special file format that can be printed on any document. Overlays are often used to take the place of letterhead paper. Rather than using preprinted letterhead, you can create an overlay containing exactly the same information that is currently on your letterhead. To print a letter with your company's letterhead, you do not need to load preprinted letterhead paper in the machine: just print the letterhead overlay on your document.</p> <p data-bbox="380 509 1532 541">To use a page overlay, you must create a new page overlay containing your logo or image.</p> <div data-bbox="380 592 2197 751" style="background-color: #f0f0f0; padding: 10px;"><ul data-bbox="477 624 2197 703" style="list-style-type: none">• The overlay document size must be the same as the document you print with the overlay. Do not create an overlay with a watermark.• The resolution of the overlay document must be the same as that of the document you will print with the overlay.</div>
<p data-bbox="53 887 344 1018">Overlay^a (Creating a new page overlay)</p>	<ol data-bbox="380 788 2159 1118" style="list-style-type: none">a To save the document as an overlay, access Printing Preferences.b Click the Advanced tab, and select Edit from the Text drop-down list. Edit Overlay window appears.c In the Edit Overlay window, click Create.d In the Save As window, type a name up to eight characters in the File name box. Select the destination path, if necessary (The default is C:\Formover).e Click Save. The name appears on the Overlay List.f Click OK or Print until you exit the Print window. The file is not printed. Instead, it is stored on your computer hard disk drive.


Printing features

Item	Description
Overlay^a (Using a page overlay)	<ul style="list-style-type: none">a Click the Advanced tab.b Select the desired overlay from the Text drop-down list.c If the overlay file you want does not appear in the Text drop-down list, select Edit... from the list and click Load. Select the overlay file you want to use. If you have stored the overlay file you want to use in an external source, you can also load the file when you access the Open window. After you select the file, click Open. The file appears in the Overlay List box and is available for printing. Select the overlay from the Overlay List box.d If necessary, check Confirm Page Overlay When Printing box. If this box is checked, a message window appears each time you submit a document for printing, asking you to confirm printing an overlay on your document. If this box is not checked and an overlay has been selected, the overlay automatically prints with your document.e Click OK or Print until you exit the Print window.
Overlay^a (Deleting a page overlay)	<ul style="list-style-type: none">a In the Printing Preferences window, click the Advanced tab.b Select Edit in the Text drop down list.c Select the overlay you want to delete from the Overlay List box.d Click Delete.e When a confirming message window appears, click Yes.f Click OK or Print until you exit the Print window. You can delete page overlays that you no longer use.

Printing features

Item	Description
Print Mode	<div data-bbox="383 280 2197 584"><ul style="list-style-type: none">• This feature is available only if you have installed the optional memory or mass storage device (HDD) (see "Variety feature" on page 7).• Some menus may not appear on the display depending on options or models. If so, it is not applicable to your machine.• To enable this feature, check Storage Options (see "Setting Device Options" on page 65).• Without installing the optional memory or mass storage device (HDD) in the machine, the RAM disk feature provides only 3 options: Normal, Proof, and Confidential.</div> <div data-bbox="383 603 2197 783"><ul style="list-style-type: none">• Print Mode: The default Print Mode is Normal, which is for printing without saving the printing file in the memory.<ul style="list-style-type: none">- Normal: This mode prints without storing your document in the optional memory.- Proof: This mode is useful when you print more than one copy. You can print one copy first to check, then print the rest of the copies later.- Confidential: This mode is used for printing confidential documents. You need to enter a password to print.</div> <div data-bbox="383 826 2197 1174"><ul style="list-style-type: none">• Job Name: This option is used when you need to find a stored file using the control panel.• User ID: This option is used when you need to find a stored file using the control panel. The user name automatically appears as the user name that you use to log on Windows.• Enter Password: If the Property of the document you selected is secured, you have to enter the password for the document. This option is used for loading a stored file using the control panel.• Confirm Password: Re-enter the password to confirm it.</div>

Printing features

Item	Description
Job Accounting	<p>This option allows you to print with the given permission.</p> <ul style="list-style-type: none">• User permission: If you check this option, only users with user permission can start a print job.• Group permission: If you check this option, only groups with group permission can start a print job. <div data-bbox="383 459 2197 619" style="background-color: #f0f0f0; padding: 10px;"><ul style="list-style-type: none">• Select the Help menu or press F1 on your keyboard and click on any option you want to know about (see "Using help" on page 47).• Administrators can enable job accounting and configure permissions in the control panel or SyncThru™ Web Admin Service.</div>

a. This option is not available when you use XPS driver.

Printing features

Using Direct Printing Utility



- Direct Printing Utility may not be available depending on model or optional goods (see "Software" on page 7).
- Available for Windows OS users only.

What is Direct Printing Utility?

Direct Printing Utility is a program that sends the PDF files directly to your machine to print without having to opening the file.

To install this program:

Download the software from the Samsung website then unpack and install it: (<http://www.samsung.com> > find your product > Support or Downloads).



- You cannot print PDF files that are restricted. Deactivate the printing restriction feature and retry printing.
- You cannot print PDF files that are restricted by a password. Deactivate the password feature, and retry printing.
- Whether or not a PDF file can be printed using the Direct Printing Utility program depends on how the PDF file was created.
- The Direct Printing Utility program supports PDF version 1.7 and below. For higher versions, you must open the file to print it.

Printing

There are several ways you can print using the Direct Printing Utility.

- 1 From the **Start** menu select **Programs** or **All Programs** .
 - For Windows 8, from **Charms**, select **Search** > **Apps**.
- 2 Find **Samsung Printers** > **Direct Printing Utility**.
- 3 Select your machine from the **Select Printer** drop-down list and click **Browse**.
- 4 Select the file you wish to print and click **Open**.
The file is added in the **Select Files** section.
- 5 Customize the machine settings for your needs.
- 6 Click **Print**. The selected PDF file is sent to the machine.

Using the right-click menu

- 1 Right-click on the PDF file to print and select **Direct Printing**.
The Direct Printing Utility window appears with the PDF file is added.
- 2 Select the machine to use.
- 3 Customize the machine settings.
- 4 Click **Print**. The selected PDF file is sent to the machine.

Printing features

Mac printing



Some features may not be available depending on models or options. It means that the features are not supported.

Printing a document

When you print with a Mac, you need to check the printer driver settings in each application you use. Follow the steps below to print from a Mac:

- 1 Open the document to print.
- 2 Open the **File** menu and click **Page Setup** (**Document Setup** in some applications).
- 3 Choose your paper size, orientation, scaling, other options, and make sure that your machine is selected. Click **OK**.
- 4 Open the **File** menu and click **Print**.
- 5 Choose the number of copies and indicate which pages to print.
- 6 Click **Print**.

Changing printer settings

You can use advanced printing features when using your machine.

Open an application and select **Print** from the **File** menu. The machine name, which appears in the printer properties window, may differ depending on the machine in use. Except for the name, the composition of the printer properties window is similar to the following.

Printing multiple pages on one sheet

You can print more than one page on a single sheet of paper. This feature provides a cost-effective way to print draft copies.

- 1 Open an application, and select **Print** from the **File** menu.
- 2 Select **Layout** from the drop-down list under **Orientation**. In the **Pages per Sheet** drop-down list, select the number of pages you want to print on one sheet of paper.
- 3 Select the other options to use.
- 4 Click **Print**.
The machine prints the selected number of pages to print on one sheet of paper.

Printing features

Printing on both sides of the paper



Some features may not be available depending on models or options. It means that the features are not supported (see "Variety feature" on page 7).

Before printing in the duplex mode, decide on which edge you will be binding your finished document. The binding options are, as follows:

- **Long-Edge Binding:** This option is the conventional layout used in book binding.
- **Short-Edge Binding:** This option is the type often used with calendars.

- 1 From your Mac application, select **Print** from the **File** menu.
- 2 Select **Layout** from the drop-down list under **Orientation**.
- 3 Select a binding orientation from the **Two-Sided** option.
- 4 Select the other options to use.
- 5 Click **Print** and the machine prints on both sides of the paper.



If you print more than 2 copies, the first copy and the second copy might print on the same sheet of paper. Avoid printing on both sides of paper when you are printing more than 1 copy.

Using help

Click the question mark on the bottom-left corner of the window and click on the topic you want to know about. A pop-up window appears with information about that option's feature, which is provided from the driver.



Printing features

Linux printing



Some features may not be available depending on models or options. It means that the features are not supported.

Printing from applications

There are a lot of Linux applications that allow you to print using Common UNIX Printing System (CUPS). You can print on your machine from any such application.

- 1 Open the document to print.
- 2 Open the **File** menu and click **Page Setup (Print Setup)** for some applications).
- 3 Choose your paper size, orientation, and make sure that your machine is selected. Click **Apply**.
- 4 Open the **File** menu and click **Print**.
- 5 Select your machine to print.
- 6 Choose the number of copies and indicate which pages to print.
- 7 Change other printing options in each tab, if necessary.
- 8 Click **Print**.



Automatic duplex printing may not be available depending on models. You can alternatively use the lpr printing system or other applications for odd-even printing (see "Features by model" on page 7).

Printing files

You can print text, image, pdf files on your machine using the standard CUPS directly from the command line interface. The CUPS lp or lpr utility allows you to do that. You can print these files by using below command format.

"lp -d <printer name> -o <option> <file name>"

Please refer to lp or lpr man page on your system for more details.

Configuring Printer Properties

You can change the default printing options or connection type with Printing utility supplied by o/s.

- 1 Launch Printing utility(Go to **System > Administration > Printing** menu or execute "**system-config-printer**" command in Terminal program).
- 2 Select your printer and double-click it.
- 3 Change default printing options or connection type.

Printing features

- 4 Click **Apply** button.

Unix printing



Some features may not be available depending on models or options. It means that the features are not supported (see "Features by model" on page 7).

Proceeding the print job

After installing the printer, choose any of the image, text, or PS files to print.

- 1 Execute "**printui <file_name_to_print>**" command.
For example, if you are printing "**document1**"
printui document1
This will open the UNIX Printer Driver **Print Job Manager** in which the user can select various print options.
- 2 Select a printer that has been already added.
- 3 Select the printing options from the window such as **Page Selection**.
- 4 Select how many copies are needed in **Number of Copies**.



To take advantage of the printer features provided by your printer driver, press **Properties**.

- 5 Press **OK** to start the print job.

Changing the machine settings

The UNIX printer driver **Print Job Manager** in which the user can select various print options in printer **Properties**.

The following hot keys may also be used: "H" for **Help**, "O" for **OK**, "A" for **Apply**, and "C" for **Cancel**.

General tab

- **Paper Size:** Set the paper size as A4, Letter, or other paper sizes, according to your requirements.
- **Paper Type:** Choose the type of the paper. Options available in the list box are **Printer Default**, **Plain**, and **Thick**.
- **Paper Source:** Select from which tray the paper is used. By default, it is **Auto Selection**.
- **Orientation:** Select the direction in which information is printed on a page.
- **Duplex:** Print on both sides of paper to save paper.