

PRODUCT EQUALITY DECLARATION

We, Samsung Electronics Co., Ltd., declare on our sole responsibility that the product (variant)

SM-G316MY

HW version : REV1.0

SW version : G316MY.001

is in all relevant parts identical to the product

SM-G316HU /DD

HW version : REV1.0

SW version : G316HU.001

The only difference between the SM-G316MY and the SM-G316HUDD is:

1. H/W

- Add Band2 Circuit
- RF Band is same.
- RF Transceiver is same. Main Ant is totally same,also Ant type,Ant gain and Ant location is same.
- BB / Memory is same.
- Bluetooth/FM/WIFI IC is same.

2. S/W

- Protocol part is exactly same.
- All application part are absolutely same.
- SM-G316HU support FDD I, FDD VIII. But SM-G316MY support FDD I, FDD II, FDD VIII

Author Information

Signature

Name:

Chen Yan

Placeof Duty:

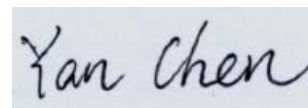
SRC-Tianjin-H/W 2 Part

Tel:

+86-136-8207-2060

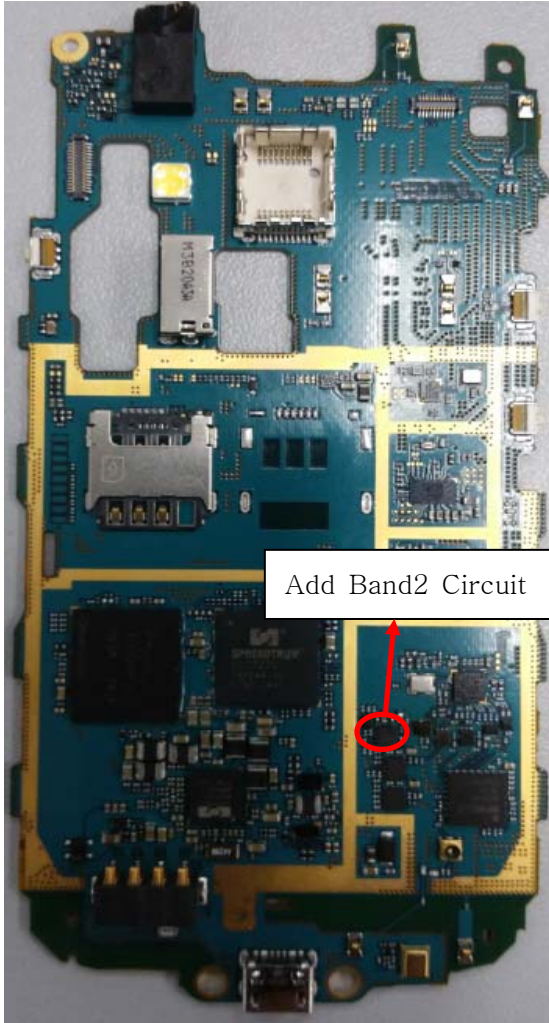
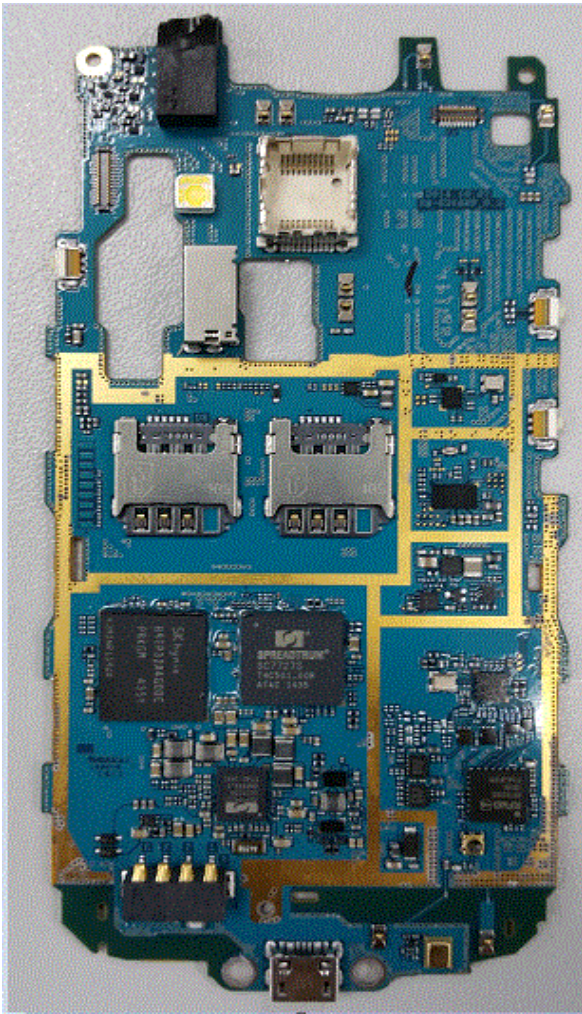
E-mail:

chen1.yan@samsung.com



Basic Model : SM-G316HU/DD

Variant Model : SM-G316MY



Comment : Support Band: B1,B8

- 1. Support Band: B1,B2,B8
- 2. PCB layout is totally same. Re-use PCB.
- 3. Main antenna type , gain and location is same.