


de GRISOGONO
GENÈVE

SAMSUNG

SAMSUNG
Gear S2
BY de GRISOGONO

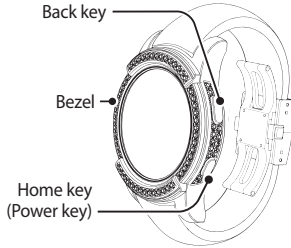


SAMSUNG

ENGLISH	4
FRANÇAIS	44
DEUTSCH	84
ITALIANO	124
ESPAGNOL	164
PORTUGUES	204
РУССКИЙ	244
简体中文	284
繁體中文	324
日本語	364
عربي	404

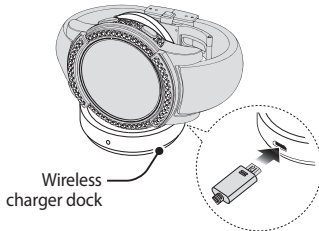
Device layout

To turn on the Gear, press and hold the Power key for a few seconds.



Charging the battery

Before using the device for the first time, you must charge the battery.



The charger should remain close to the electric socket and be easily accessible while charging.

Connecting the Gear to a mobile device

You should connect your Gear to your mobile device once before using the Gear.

To connect your Gear and mobile device, install the Samsung Gear app on the mobile device. The Samsung Gear app is available from **Galaxy Apps** on Samsung Android devices and from **Play Store** on other Android devices. Or, visit apps.samsung.com/gear to download it.

Gear

- 1 Turn on the Gear.

Mobile device

- 2 Launch **Samsung Gear**.
If necessary, update the Samsung Gear app to the latest version.
 - 3 Tap **CONNECT TO GEAR**.
 - 4 When the **Bluetooth pairing request** window appears, confirm the passkeys displayed on your Gear and mobile device match. Then, tap **OK**.
 - 5 Follow the on-screen instructions to complete the connection.
- When the devices are connected, an on-screen tutorial will appear on the Gear's screen.



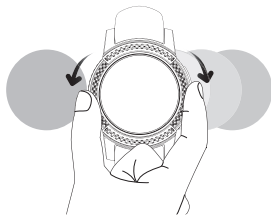
- Connection methods may vary depending on your mobile device and software version.
- Supported mobile devices and features may vary depending on your region, service provider, and device manufacturer. Visit www.samsung.com to see a list of compatible devices.

Turning the screen on and off

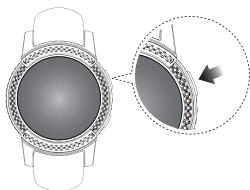
To turn on the screen, rotate the bezel. Or, press the Home key or the Back key. To turn off the screen, cover it with your palm.

Using the bezel

Rotate the bezel to scroll through the screens or to highlight items.



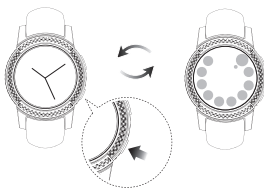
Returning to the previous screen



Switching between the Watch and Apps screen

On the Watch screen, press the Home key to open the Apps screen.

When you are not on the Watch screen, press the Home key to return to the Watch screen.



Accessing more information

To view the full user manual, open the Apps screen of the mobile device, tap **Samsung Gear** → **MORE** (ⓘ) → **User manual**.

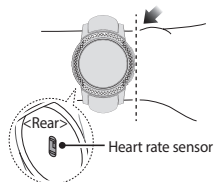
Visit www.samsung.com to view device information, the user manual, and more.



- The method for accessing the user manual from the Samsung Gear app may vary depending on your device.
- The user manual may not be available depending on the web browser or service provider.

Notice for measuring the heart rate

When measuring your heart rate, wear the Gear snugly on your arm above your wrist as shown in the figure below. Do not fasten the Gear too tightly.



- The accuracy of the heart rate sensor may be diminished depending on skin condition, or measurement conditions and surroundings. Take heart rate measurements when you are seated and relaxed.
- Do not look directly at the heart rate sensor's lights. Doing so may impair your vision.
- If your device becomes hot to the touch, please remove it until it cools. Exposing skin to a hot surface of the device for a long time may cause skin burn.

THIS DEVICE AND ANY SOFTWARE, SERVICE, FUNCTION PROVIDED THEREIN IS SOLELY INTENDED FOR FITNESS AND WELLNESS PURPOSES ONLY AND IS NOT INTENDED FOR USE IN THE DIAGNOSIS OF DISEASE OR OTHER CONDITIONS, OR IN THE CURE, MITIGATION, TREATMENT OR PREVENTION OF DISEASE.

Correct disposal

To view more information about device and battery disposal, open the Apps screen of the mobile device, **Samsung Gear** → **MORE** (H) → **User manual**.



This marking on the product, accessories or literature indicates that the product and its electronic accessories (e.g. charger, headset, USB cable) should not be disposed of with other household waste. This product is RoHS compliant.



This marking on the battery, manual or packaging indicates that the batteries in this product should not be disposed of with other household waste.

Safety information

Read all safety information before using the device to ensure safe and proper use.



Warning

Follow the warning information provided below to prevent incidents such as fire or explosion

- Do not expose the device to physical impact or damage.
- Use manufacturer-approved chargers, accessories, and supplies.
- Do not touch the charger or the device with wet hands while the device is charging.
- If any part of the device is cracked or broken, or if the device becomes very hot, stop using the device immediately and take it to a Samsung Service Centre.

Follow the warnings below to prevent injury to people or damage to the device

- Do not allow children or animals to chew or suck the device.
- Do not poke eyes, ears, or other body parts with the device or insert the device into the mouth.
- The device can be used in locations with an ambient temperature of 0°C to 35°C. You can store the device at an ambient temperature of -20°C to 50°C. Using or storing the device outside of the recommended temperature ranges may damage the device or reduce the battery's lifespan.
- Do not store your device near or in heaters, microwaves, cooking equipment, or high pressure containers.
- Keep your device dry.
- Do not use your device outdoor during a thunderstorm.
- Comply with all safety warnings and regulations regarding mobile device usage while operating a vehicle.
- Do not wear the device too tightly. Make sure to keep the device clean and dry. Though this device has met international safety standards, some people may experience skin irritation if they are allergic to certain substances.



To prevent possible hearing damage when using a headset, do not listen to sound at high volume for long periods.

To view the full safety information, open the Apps screen of the mobile device and tap **Samsung Gear** → **MORE** (H) → **User manual**.

Maintaining water and dust resistance

The device may be damaged if water or dust enters the device. Follow these tips carefully to prevent damage to the device and to maintain the water- and dust-resistant performance of the device.

- Do not immerse the device in water deeper than 1.5 m and keep it submerged for more than 30 minutes.
- Do not expose the device **to water moving with force**, such as water running from a tap, ocean waves, or waterfalls.
- If the device or your hands are wet, dry them thoroughly before handling the device.
- **If the device is exposed to freshwater, dry it thoroughly with a clean, soft cloth. If the device is exposed to any liquid other than freshwater, rinse the device with freshwater immediately and dry it thoroughly with a clean, soft cloth. Failure to rinse the device in freshwater and dry it as instructed may cause the device to suffer from operability or cosmetic issues.**
- **If the device is dropped or receives an impact**, the water- and dust-resistant features of the device may be damaged.
- The touchscreen and other features may not work properly **if the device is used in water or in other liquids.**

Your device has been tested in a controlled environment and certified to be water- and dust-resistant in specific situations (meets requirements of classification IP68 as described by the international standard IEC 60529 - Degrees of Protection provided by Enclosures [IP Code]; test conditions: 15 - 35°C, 86 - 106 kPa, 1.5 metre, 30 minutes). Despite this classification, your device is not impervious to water damage in any situation.

Specific Absorption Rate (SAR) certification information

THIS DEVICE MEETS INTERNATIONAL GUIDELINES FOR EXPOSURE TO RADIO WAVES

SAR

www.sar-tick.com

Your mobile is designed not to exceed the limits for exposure to radio waves recommended by international guidelines. The guidelines were developed by an independent scientific organisation (ICNIRP) and include a substantial safety margin designed to assure the safety of all persons, regardless of age and health.

The radio wave exposure guidelines use a unit of measurement known as the Specific Absorption Rate, or SAR. The SAR limit for mobile devices is 2.0 W/kg for Head and Body, 4.0 W/kg for Limb. The highest SAR values under the ICNIRP guidelines for this device model are:

SAR values for European countries: The SAR values below are only for devices developed for use in European countries.

Maximum SAR for this model and conditions under which it was recorded

Limb SAR 0.237 W/kg

Front of face SAR 0.048 W/kg

(Head SAR limit is also applicable for the front of face SAR.) Front of face SAR testing has been carried out at a separation distance of 1.0 cm. To meet RF exposure guidelines during Front of face operation, the device should be positioned at least this distance away from your face.

For SAR values for all other countries: For SAR values specific to your model, visit www.samsung.com/sar and search for your region and device with the model number.

Declaration of Conformity

Samsung Electronics declares that this device complies with the essential requirements and relevant provisions of Directive 1999/5/EC.

Go to www.samsung.com/mobile_doc to view the Declaration of Conformity.

CE 0168

Samsung Electronics (UK) Ltd, Euro QA Lab. Blackbushe Business Park. Saxony Way, Yateley, Hampshire. GU46 6GG, United Kingdom

Some content may differ from your device depending on the region, service provider, or software version, and is subject to change without prior notice.

Copyright © 2015 Samsung Electronics