

# Quick Guide

## 1. Introduction

This guide is an interim for approval test. It is not a final user's guide. It covers installation guide and telephone operation only.

## 2. Installation

### 2.1 Before you begin

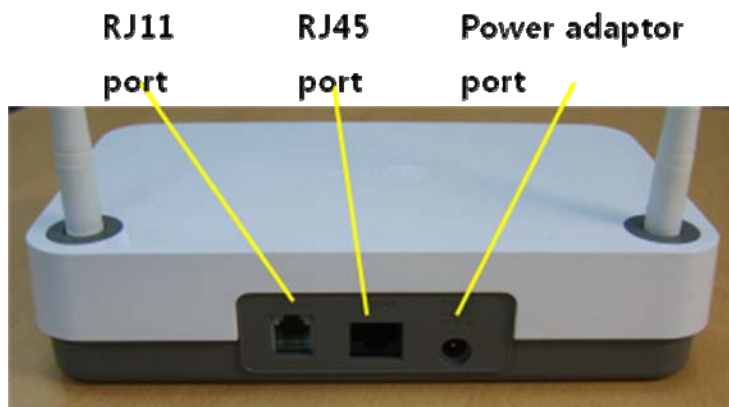
Make sure your package includes the items listed here.

- 1 Base
- 1 Frame
- 1 Handset
- 1 AC power adaptor for Handset
- 2 AC power adaptors for Frame or Base
- 1 Battery for Frame
- 1 Battery for Handset
- 1 charging cradle for Handset
- 1 charging cradle for Frame
- 1 Telephone line for connecting between Base and telephone wall jack (RJ11)
- 1 Ethernet line for connecting between Base and DSL/Cable router (RJ45)

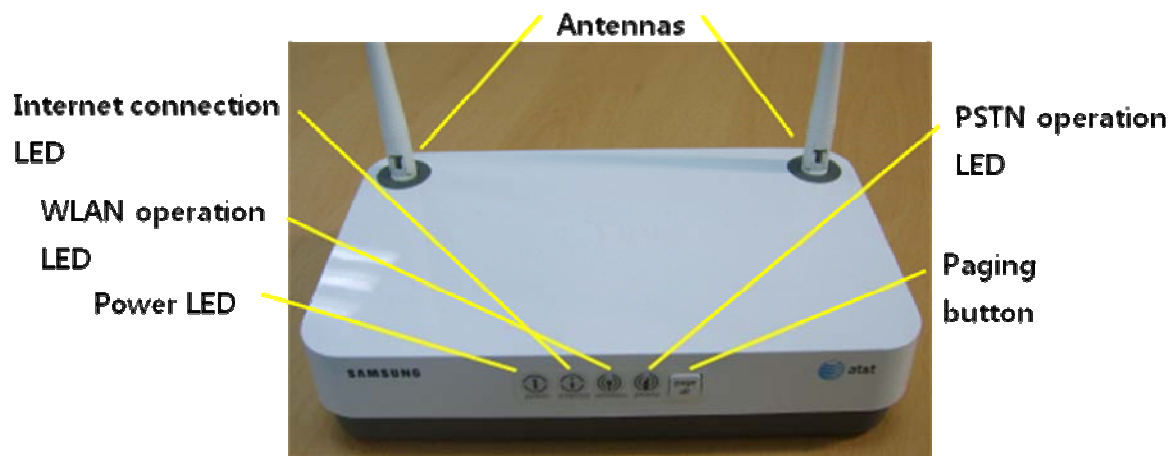
### 2.2 Layout for devices

#### 2.2.1 Base layout

- Rear view

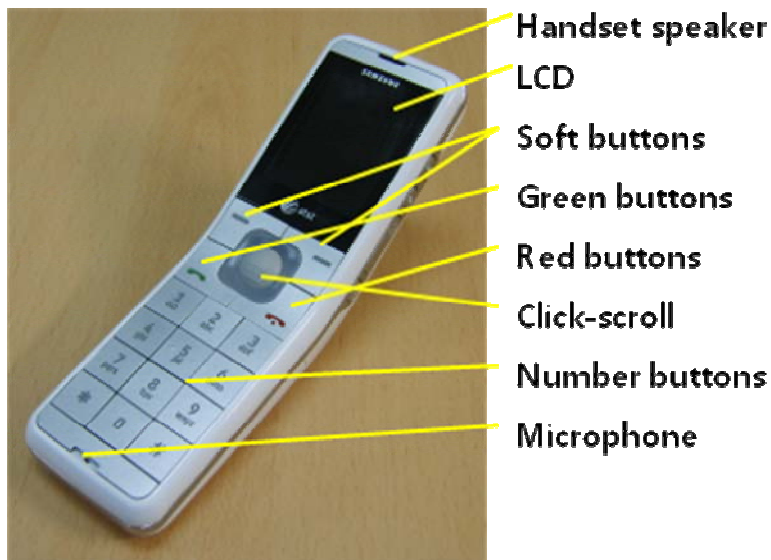


- Front view



## 2.2.2 Handset layout

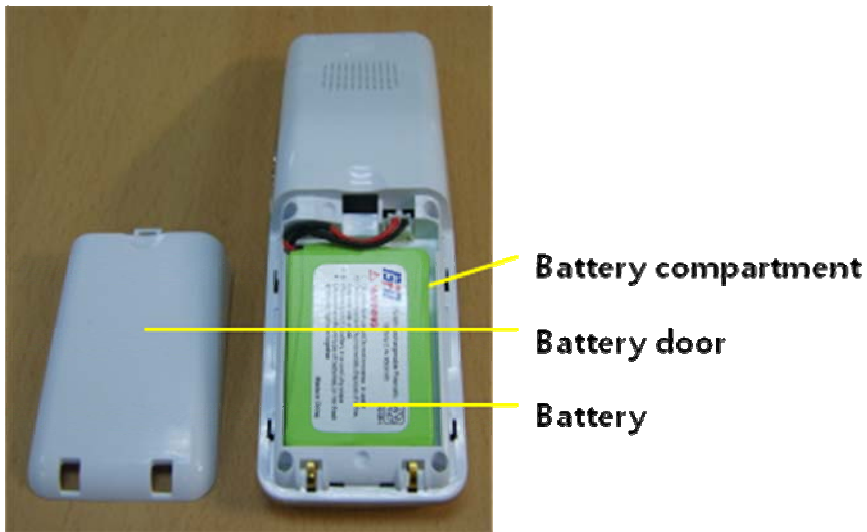
- Front view



- Right view

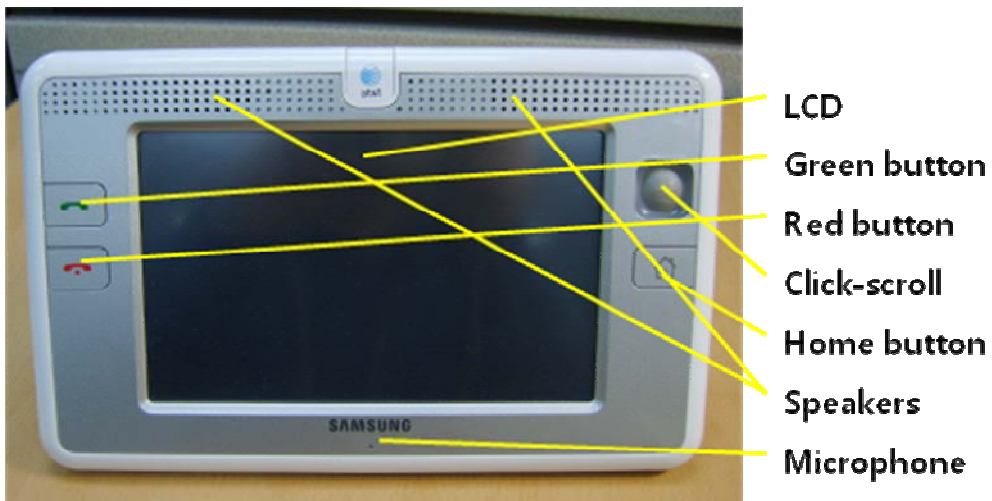


- Rear view



### 2.2.3 Frame layout

- Front view

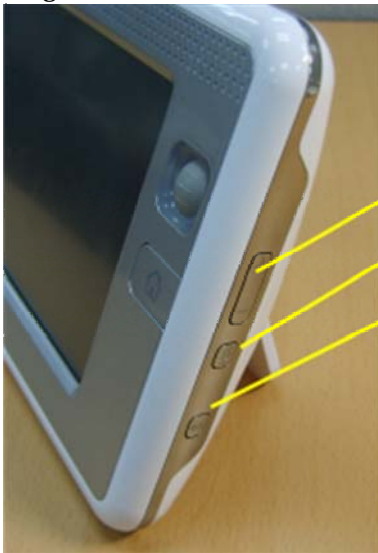


- Left view

**Stylus pen**  
**SD card slot**  
**USB port**  
**Power adaptor port**



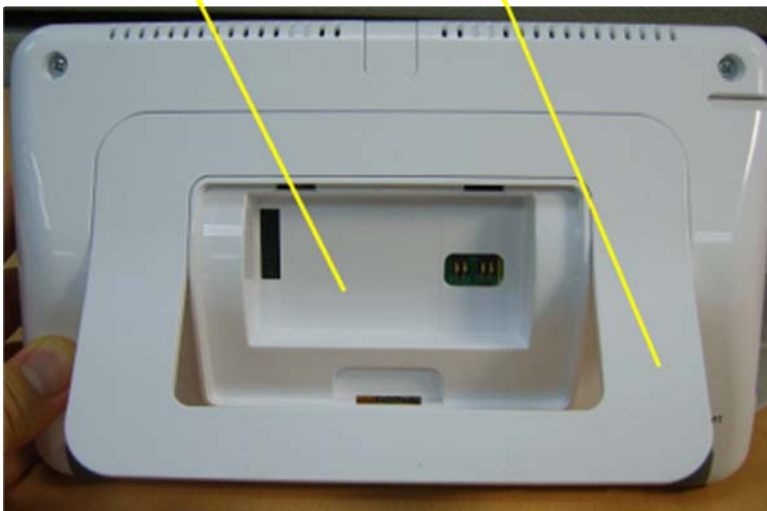
- Right view



**Volume buttons**  
**Mute button**  
**Intercom button**

- Rear view

**Battery compartment**      **Support**



## 2.2.4 Charging cradle for Handset

- Rear view

**Power adaptor port**



## 2.2.5 Charging cradle for Frame

- Rear view



## 2.3 Installing devices

### 2.3.1 Installing Base

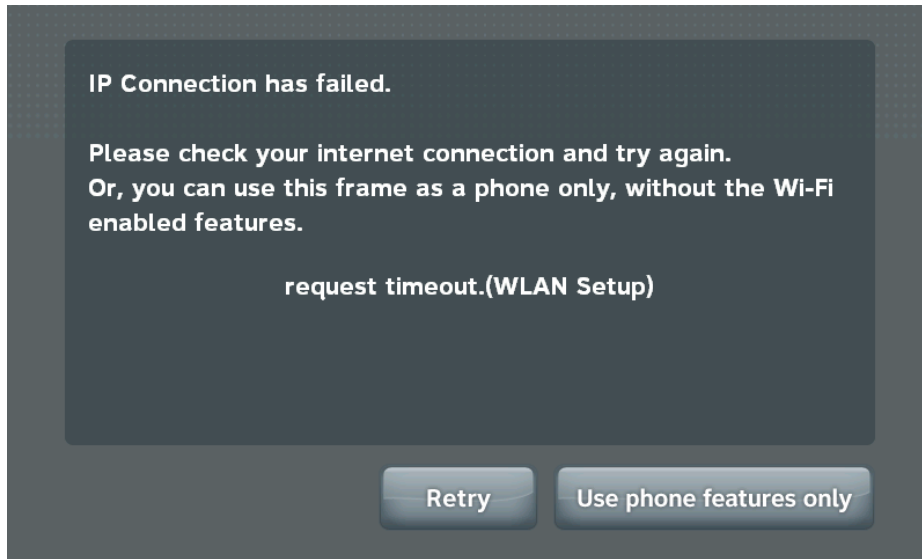
1. Choose an area near an electrical outlet, a telephone wall jack (RJ11), and a DSL/Cable modem router (RJ45).
  2. Plug one end of the telephone line cord into TEL LINE jack on the rear panel of the Base and other end into a modular jack.
  3. Plug one end of the ethernet line cord into Internet jack on the rear panel of the Base and other end into a LAN port of your DSL/Cable modem router.
  4. Plug the AC power adaptor into the electrical outlet and the DC connector into the power jack of the Base. (Base and Frame power adaptors are the same.)
- Even if you don't have a DSL/Cable modem router, you can make a call and answer.

### 2.3.2 Installing Handset

1. Separate battery door by pushing the door down.
2. Plug the battery pack cord into the jack.
3. Insert battery pack.
4. Close the door by pushing up.
5. Then the power is automatically on.
6. Plug AC power adaptor into the jack of charging cradle. (Connector of handset power adaptor is different from those of Base and Frame.)
7. Place the handset in the cradle.

### 2.3.3 Installing Frame

1. Plug the battery pack into the back of Frame.
2. Plug AC power adaptor into the jack of charging cradle. (Base and Frame power adaptors are the same.)
3. Place the frame in the cradle.
4. Hold green button for a while.
5. Then the power is on and system boots up.
6. If you don't have a DSL/Cable modem router, the frame cannot obtain IP address. You can choose "Use phone features only" button in booting time.



### 3. Telephone Operation

#### 3.1 Make a call

##### 3.1.1 Make a call with Handset

###### 3.1.1.1 Make a call with Handset (Overlap mode)

1. Press Green button.
2. Then you can hear dial tone.
3. Press digits to make a call. (E.g. 12135431234)

###### 3.1.1.2 Make a call with Handset (Enbloc mode)

1. Press digits to make a call. (E.g. 12135431234)
2. Press Green button.
3. Then you can hear DTMF tones.

##### 3.1.2 Make a call with Frame

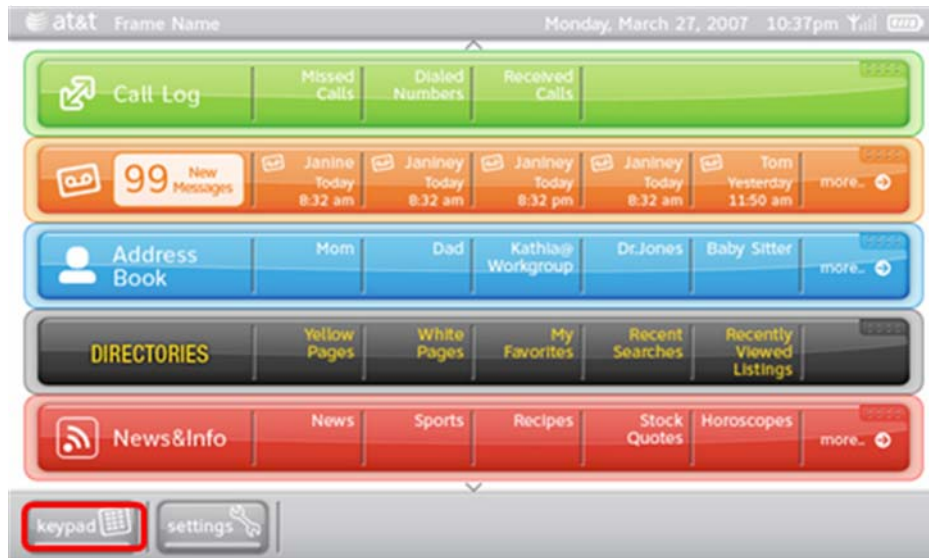
###### 3.1.2.1 Make a call with Frame (Overlap mode)

1. Press Green button
2. Then you can hear dial tone and see the following call screen.
3. Press digits to make a call. (E.g. 12135431234)



### 3.1.2.2 Make a call with Frame (Enbloc mode)

1. Press “Keypad” button in the following touch screen.
2. Then pop up the call screen.
3. Press digits to make a call. (E.g. 12135431234)
4. Press Green button.
5. Then you can hear DTMF tones.



### 3.2 Answer calls

#### 3.2.1 Answer calls with Handset

- When the phone rings, press Green button or “Answer” soft button.

#### 3.2.2 Answer calls with Frame

- When the phone rings, press Green button or “Answer” soft button.

### 3.3 Intercom

#### 3.3.1 Make an intercom call with Handset

1. Press Intercom button on right side.
2. Then you can see device lists you can make an intercom call.
3. Scroll and click the device you want to connect.

#### 3.3.2 Make an intercom call with Frame

1. Press Intercom button on right side or touch Intercom button in the call screen.
2. Then you can see device lists you can make an intercom call.
3. Touch the device you want to connect.



## Consumer Information

This equipment complies with Part 68 of the FCC rules and the requirements adopted by the ACTA. On the *back* of this equipment is a label that contains, among other information, a product identifier in the format US:A3LW400BSMT-i8130. If requested, this number must be provided to the telephone company.

An applicable certification jacks Universal Service Order Codes(USOC) for the equipment is provided RJ11, RJ45 in the packaging with each piece of approval terminal equipment.

A plug and jack used to connect this equipment to the premises wiring and telephone network must comply with the applicable FCC Part 68 rules and requirements adopted by the ACTA. A compliant telephone cord and modular plug is provided with this product. It is designed to be connected to a compatible modular jack that is also compliant. See installation instructions for details.

The REN is used to determine the number of devices that may be connected to a telephone line. Excessive RENs on a telephone line may result in the devices not ringing in response to an incoming call. In most but not all areas, the sum of RENs should not exceed five (5.0). To be certain of the number of devices that may be connected to a line, as determined by the total RENs, contact the local telephone company. For products approved after July 23, 2001, the REN for this product is part of the product identifier that has the format US:A3LW400BSMT-i8130. The digits represented by 00 are the REN without a decimal point (*e.g.*, 03 is a REN of 0.3). For earlier products, the REN is separately shown on the label.

If this equipment causes harm to the telephone network, the telephone company will notify you in advance that temporary discontinuance of service may be required. But if advance notice isn't practical, the telephone company will notify the customer as soon as possible. Also, you will be advised

The telephone company may make changes in its facilities, equipment, operations or procedures that could affect the operation of the equipment. If this happens the telephone company will provide advance notice in order for you to make necessary modifications to maintain uninterrupted service.

If trouble is experienced with this equipment US:A3LW400BSMT-i8130, for repair or warranty information, please contact AT&T Services, Inc. 214-576-4530, [www.att.com](http://www.att.com). If the equipment is causing harm to the telephone network, the telephone company may request that you disconnect the equipment until the problem is resolved.

Connection to party line service is subject to state tariffs. Contact the state public utility commission, public service commission or corporation commission for information.

If your home has specially wired alarm equipment connected to the telephone line, ensure the installation of this *phone* does not disable your alarm equipment. If you have questions about what will disable alarm equipment, consult your telephone company or a qualified installer.

This equipment is hearing aid compatible.

## **NOTICE**

This equipment has been tested and found to comply with the limits for a Class B digital device, pursuant to Part 15 of the FCC Rules. These limits are designed to provide reasonable protection against harmful interference in a residential installation. This equipment generates uses and can radiate radio frequency energy and, if not installed and used in accordance with the instructions, may cause harmful interference to radio communications. However, there is no guarantee that interference will not occur in a particular installation. If this equipment does cause harmful interference to radio or television reception, which can be determined by turning the equipment off and on, the user is encouraged to try to correct the interference by one or more of the following measures:

- Reorient or relocate the receiving antenna.
- Increase the separation between the equipment and receiver.
- Connect the equipment into an outlet on a circuit different from that to which the receiver is needed.
- Consult the dealer or an experienced radio TV technician for help.

This device complies with part 15 of the FCC Rules. Operation is subject to the following two conditions:

(1) This device may not cause harmful interference; and (2) This device must accept any interference received, including interference that may cause undesired operation.

**CAUTION** : Any changes or modifications in construction of this device which are not expressly approved by the party responsible for compliance could void the user's authority to operate the equipment.

## **RF Exposure Statement:**

This equipment complies with FCC RF radiation exposure limits set forth for an uncontrolled environment. Use of other accessories may not ensure compliance with FCC RF exposure guidelines. This device must not be co-located or operating in conjunction with any other antenna or transmitter. The changes or modifications not expressly approved by the party responsible for compliance could void the user's authority to operate the equipment.

**Base Station :**

In order to comply with FCC RF exposure requirements the base station must be installed with a minimum separation distance of 20 cm from the antennas to the user or near by persons.

**Frame, Handset :**

For body worn operation, this frame has been tested and meets FCC RF exposure guidelines when used with an accessory that contains no metal .