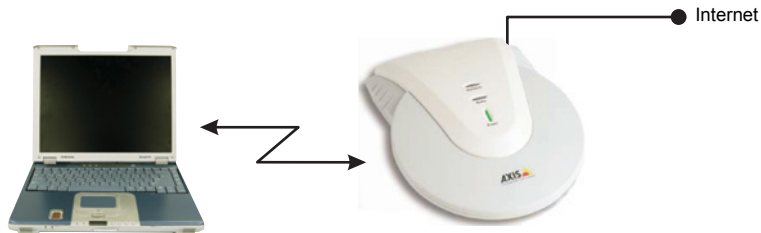


Let's Access the Internet with *Bluetooth*



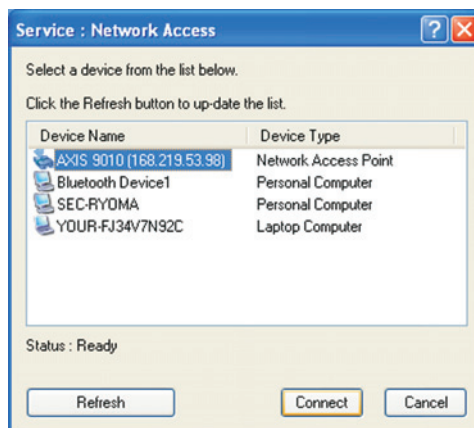
1. When using a *Bluetooth* access point.



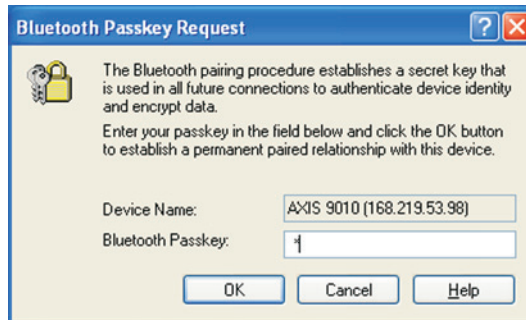
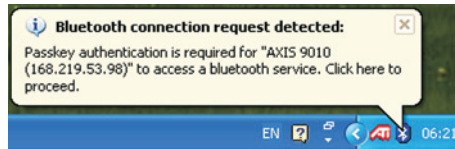
- 1) Choose the “Service > Network Access” menu of Samsung *Bluetooth* Tray icon.



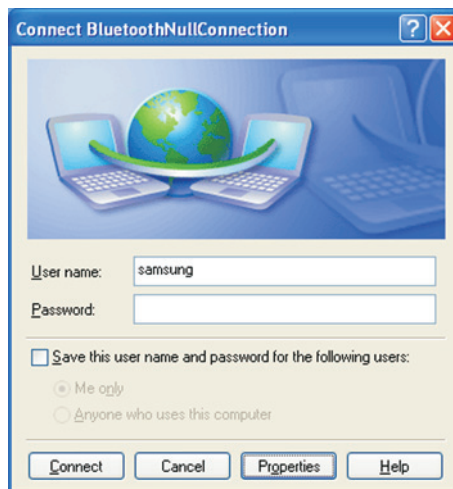
- 2) Select the *Bluetooth* Access Point you wish to use, and click the “Connect” button.



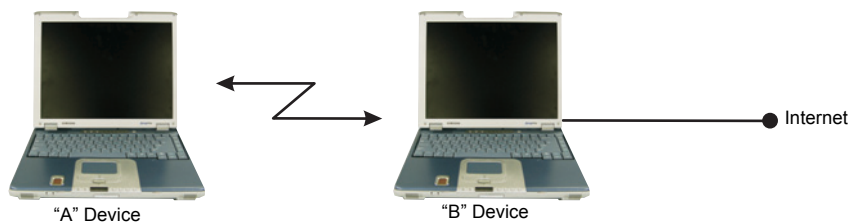
- 3) Access point will request a passkey. Ask for the passkey from your network administrator, and then enter the passkey.



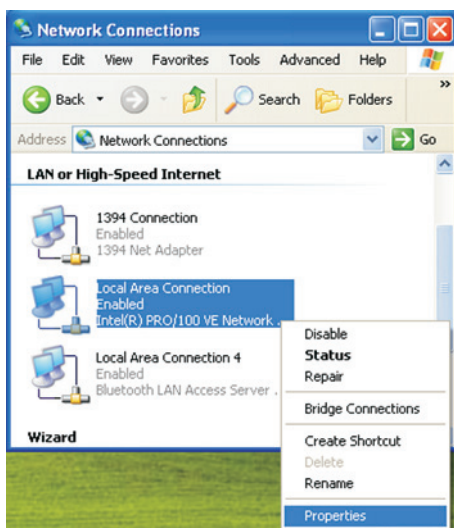
- 4) If the User name and Password is requested, just click "Connect" button.



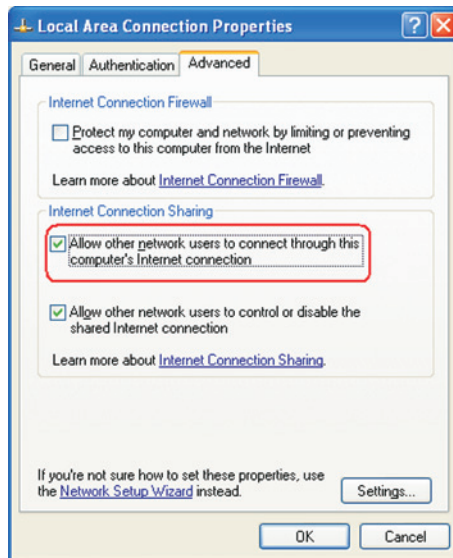
2. When using another *Bluetooth* device as an Internet connection sharing server.



- 1) Select the property of the LAN connection that is to be used as the Internet Connection Sharing Server ("B" device).



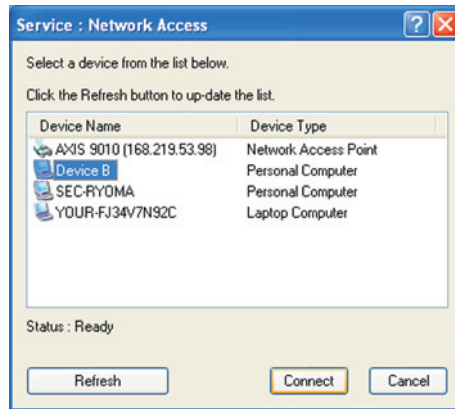
- 2) In the Advanced tab, check “Allow other network users to connect through this computer’s Internet connection”.



- 3) Left click Samsung *Bluetooth* Tray icon in Client (“A” Device) and choose “Service > Network Access”.



- 4) Select the Internet Connection Sharing Server, Device B, and click the “Connect” button.




While connected with an AP or Internet Connection Sharing Server, you can not find other *Bluetooth* devices.




When you are using another *Bluetooth* device as an Internet Connection Sharing Server, we recommend using only one client at once. If you use more than 2 clients at once, the connection may be unstable.

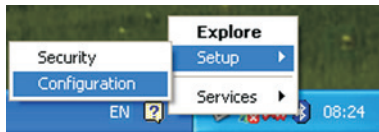
Let's Exchange Business Cards



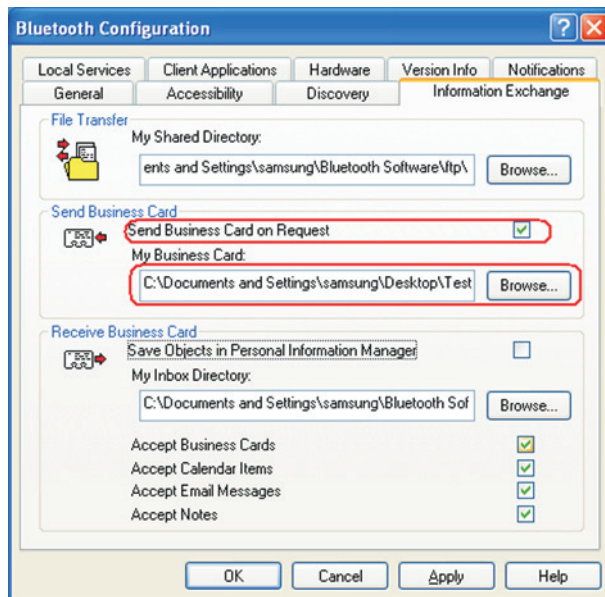
1. To exchange a business card, you first should have a your own business card .

2. You can make a business card using Microsoft Outlook.  To make a new contact and save that as a Vcard file format.

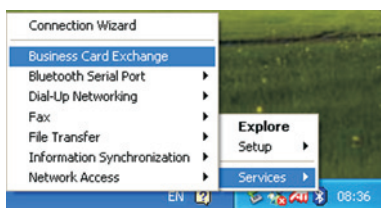
3. Select the “Setup > Configuration” menu of Samsung *Bluetooth* Tray Icon.



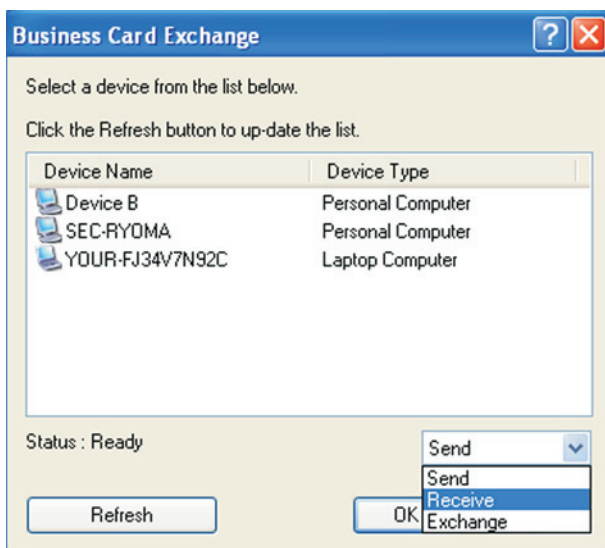
4. In the Information Exchange tab, check “Send Business Card on Request”, and enter your business card (Vcard) location. Now you are ready to exchange business cards.



5. Choose the “Service > Business Card Exchange” menu of Samsung *Bluetooth* Tray Icon.



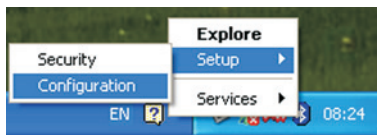
6. Select the *Bluetooth* device with which you want to exchange your business card, and choose one of the following desired options “Send, Receive, or Exchange”, and click the “OK” button.



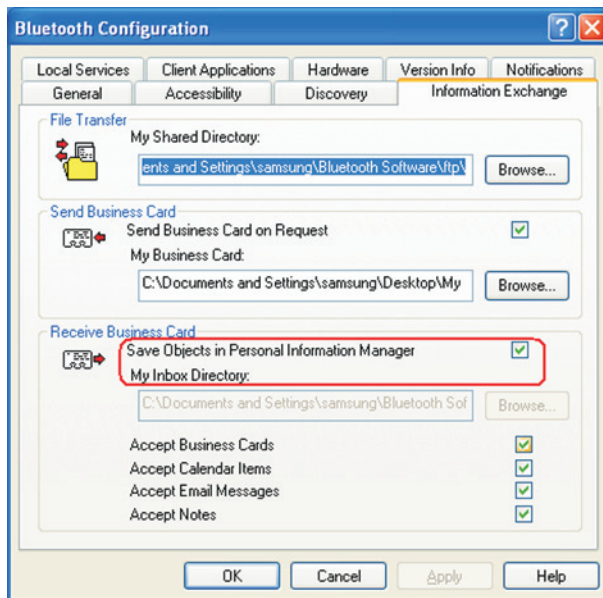
Let's Synchronize Your PIMS Data



1. At first, to synchronize your PIMS data, you have to install Microsoft Outlook in your *Bluetooth* device system.
2. Select “Setup > Configuration” menu of Samsung *Bluetooth* Tray Icon.

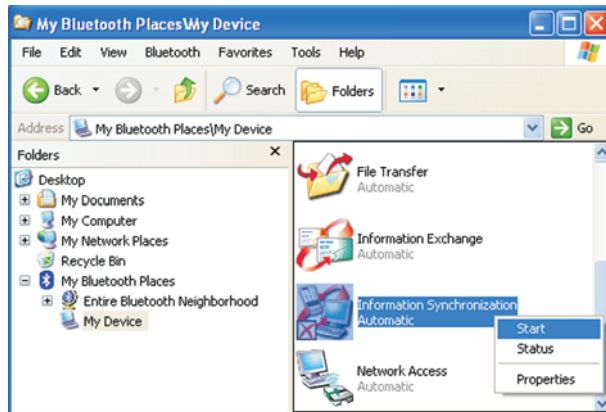


3. In the Information Exchange tab, check “Save Object in Personal Information Manager”.



4. The Information Synchronization function is disabled by default, therefor you have to start the function to use it.

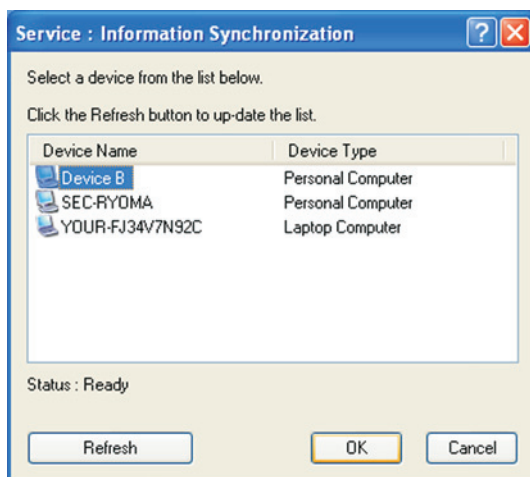
5. Double click the Samsung *Bluetooth* Tray Icon to run “My *Bluetooth* Places” explorer. Click “My Device” and choose “Start” for the Information Synchronization icon.



6. Now, you are ready to synchronize your PIMS data with another *Bluetooth* device.
7. Select “Service > Information Synchronization” menu of the Samsung *Bluetooth* Tray icon.



8. Select a the *Bluetooth* device with which you want to synchronize your PIMS data, and click the “OK” button.



9. You can view the Synchronization result in the Microsoft Outlook contacts menu.

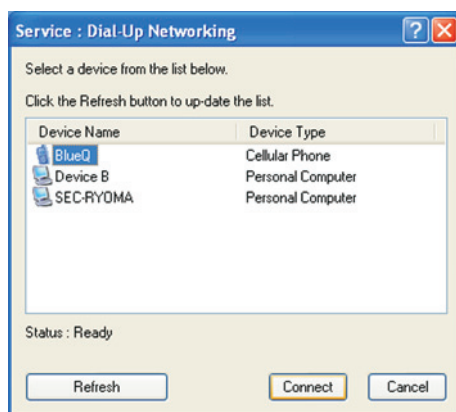
Let's Use Dial-Up Networking



1. Select the “Services > Dial-Up Networking” menu of Samsung *Bluetooth* Tray icon.



2. Select a *Bluetooth* cellular phone and click the “Connect” button.



3. Enter the User name, Password, and Dial number for the ISP server that you want to connect to.

Connect BluetoothConnection

User name: samsung

Password: ••••

☒ Save this user name and password for the following users:

☐ Me only

☒ Anyone who uses this computer

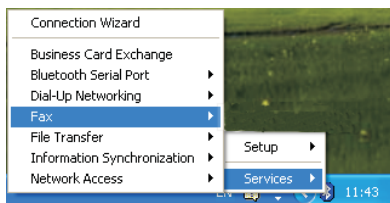
Dial: 123456

Dial Cancel Properties Help

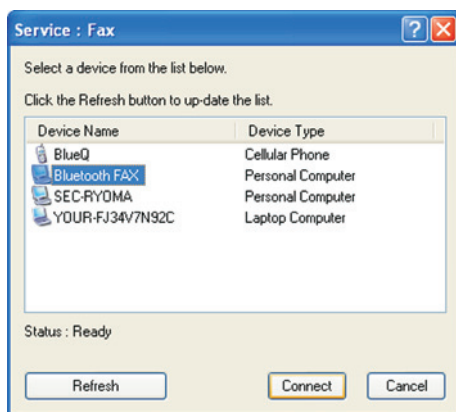
Let's use a FAX



1. Select the "Service > Fax" menu of Samsung *Bluetooth* Tray icon.



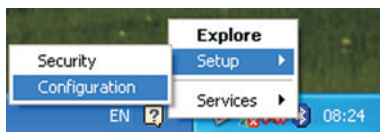
2. Select a *Bluetooth* fax device and click the "Connect" button.



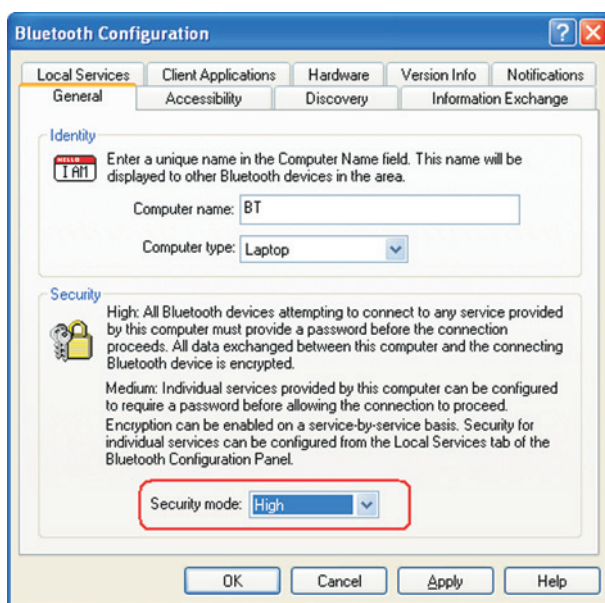
3. Now, you are ready to use any fax application. Just use like your device is directly connected to the fax.

Controlling Access to Your *Bluetooth* Device from Other *Bluetooth* Devices

1. Select the “Setup > Configuration” menu of Samsung *Bluetooth* Tray Icon.

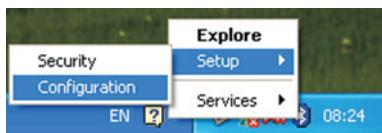


2. In the General tab, set the “Security mode” to “High”. Then whoever wants to access your *Bluetooth* device must know the passkey what you chose.

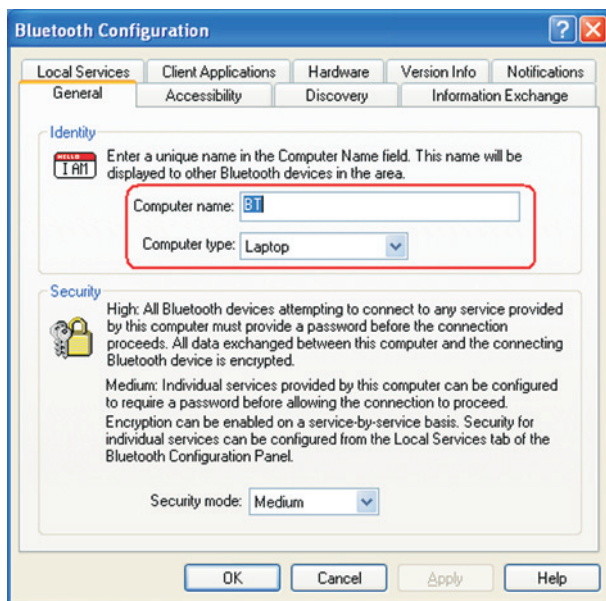


How to Change Your *Bluetooth* Device Name

1. Select the “Setup > Configuration” menu of Samsung *Bluetooth* Tray Icon.



2. Enter the name you wish to use in the “Computer Name” edit box.



The new name is not applied in the “My *Bluetooth* Places” window until the connection with other *Bluetooth* device is established again.