

SPH-i700

User's Manual

Please read this manual before operating the phone,
and keep it for future reference.

Contents

Safety Precautions.....	3
Introduction to SPH-I700.....	5
Layout.....	6
Tapping and Typing	7
How To use Application.....	8
Phone Application.....	11
Another Applications.....	12
Setting Preferences for Tour Phone.....	13
Installing ActiveSync.....	14
For More Information.....	15

FCC RF EXPOSURE INFORMATION

WARNING! Read this information before using your phone



In August 1996 the Federal Communications Commission (FCC) of the United States with its action in Report and Order FCC 96-326 adopted an updated safety standard for human exposure to radio frequency electromagnetic energy emitted by FCC regulated transmitters. Those guidelines are consistent with the safety standard previously set by both U.S. and international standards bodies. The design of this phone complies with the FCC guidelines and these international standards.



Use only the supplied or an approved antenna. Unauthorized antennas, modifications, or attachments could impair call quality, damage the phone, or result in violation of FCC regulations.

Do not use the phone with a damaged antenna. If a damaged antenna comes into contact with the skin, a minor burn may result. Please contact your local dealer for replacement antenna.

Body-worn Operation

This device was tested for typical body-worn operations with the back of the phone kept 1.5 cm. from the body. To maintain compliance with FCC RF exposure requirements, use only belt-clips, holsters or similar accessories that maintain a 1.5 cm. separation distance between the user's body and the back of the phone, including the antenna. The use of belt-clips, holsters and similar accessories should not contain metallic components in its assembly. The use of accessories that do not satisfy these requirements may not comply with FCC RF exposure requirements, and should be avoided.

Safety Precautions

Compliance with Safety Standards

The Samsung Cellular phone meets all standards and recommendations for the protection of the public from exposure to radio frequency(RF) electromagnetic energy established by governmental bodies and other qualified organizations. To reduce the risk of fire, electric shock, serious personal injury, or property damage, please follow these guidelines:

Driving

Using a wireless phone while driving is illegal in some states and countries. Know the laws and regulations for your area, and pull off the road and park if you need to make a call. If you must use the phone while driving, purchase and install the optional Hands-Free Car Kit.

Electronic Devices

Your wireless telephone is a radio transmitter and receiver. When the power is on, the phone receives and sends out RF energy. Most modern electronic equipment, such as equipment and cars, contains an RF signal shield. RF energy may affect some inadequately shielded electronic equipment.

Turn off your phone in health care facilities, and always request pacemakers and hearing aids, to determine if they are shielded adequately from external RF signals. Note if there are any regulations posted in area regarding the operation of wireless phones, and learn where you can use them safely within facility.

Aircraft

Turn off your phone before boarding any aircraft. The Federal Aviation Administration (FAA) requires that you have prior permission from the crew to use your phone while the plane is on the ground. FCC regulations prohibit using your phone in the air. Do not use your phone at any time while traveling on board a plane.

Blasting Areas

Construction crews often use remote-control RF devices to set off explosives. To avoid interfering with blasting operation, turn off your phone when you are in a blasting area

or in any area with signs posted that read "Turn off two-way radio."

Other Dangerous Areas

Turn off your phone in any area with a potentially explosive atmosphere. It is rare, but your phone or its accessories could generate sparks, which could explosion or fire.

- * Fueling areas, such as gas stations
 - * Below deck on boats
 - * Furl or chemical transfer or storage facilities
 - * Areas where the air contain chemicals or particles such as grain, dust, or metal powders
 - * Any other area where you would normally be advised to turn off your vehicle engine
- Do not transport or store flammable gas, liquid, or explosives in the compartment of a vehicle containing your or accessories.

FCC/IC Notice

This device compiles with part 15 of the FCC rules. Operation is subject to the following two condition: (1) This device may not cause harmful interference, and (2) this device must accept any interference received, including interference that may cause undesired operation.

Introduction to SPH-I700

The following features provide a range of user options that make the phone both fun and easy to use.

Phone features : You can use advanced phone capabilities.

PDA features : calander, contacts, Inbox, Internet Explorer, Notes, Tasks etc.

Messaging feature : You can receive three kinds of messages - voicemail, text, e-mail.

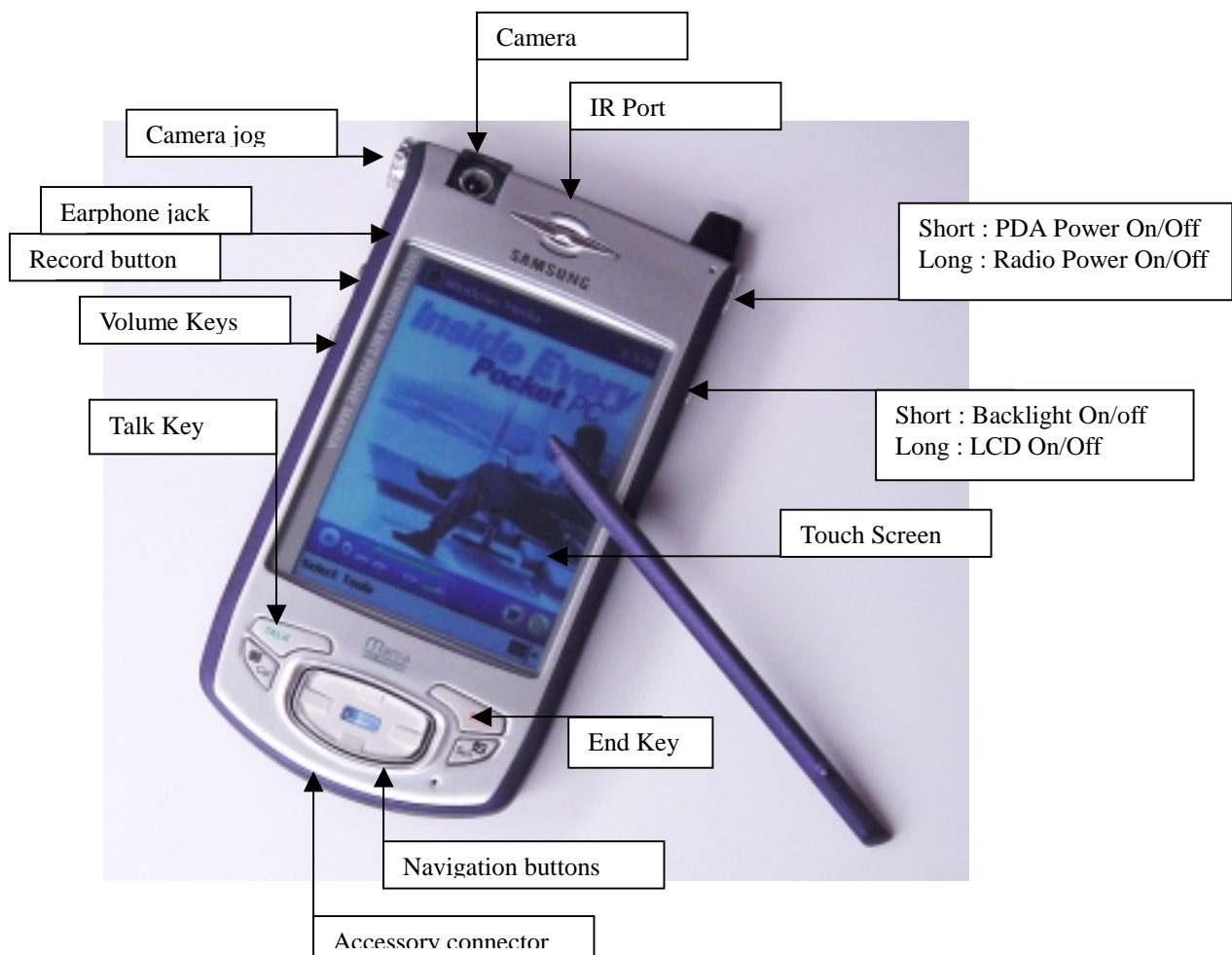
Data Capability : ActiveSync® technology to synchronize your phone and PC.

Touch Screen

Writing Recognition and On-Screen keyboard and PC input method

Layout

The following picture shows the main elements of SPH-I700.



Power button : Press to turn the phone on / off and backlight on / off when pressed and held.

Earphone jack : Connects the optional microphone.

Record button : Press to record the voice of the other party during conversation, and press and hold to record the voice memo.

Volume Keys : Press to adjust voice volume during conversation, and adjust key beep volume in standby mode.

IR port : Uses infrared technology to transmit data to and receive data from other Palm Computing platform handhelds, and to perform HotSync operations.


Accessory connector : Connects your phone to the cradle, which in turn connects to the back of your computer and through the AC adapter to the wall current.

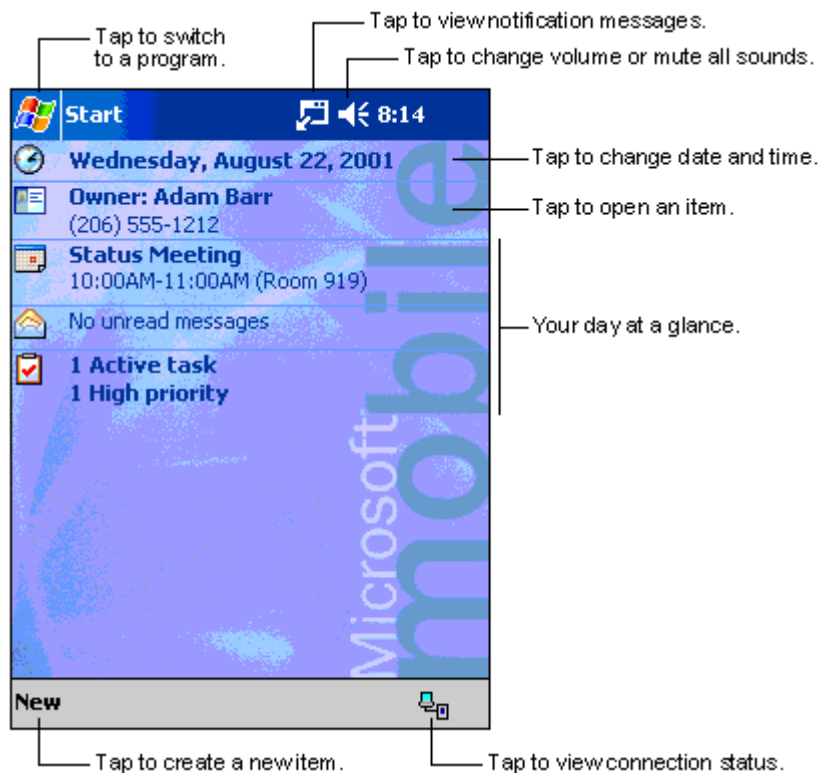
Tapping and Typing

Like using a mouse to click elements on a computer screen, using the stylus to tap elements on your phone screen is the basic action that gets things done on your phone. Always use the point of the stylus for tapping or making strokes on the phone screen. Never use an actual pen, pencil, or other sharp object to write on the phone screen.

How To use Application

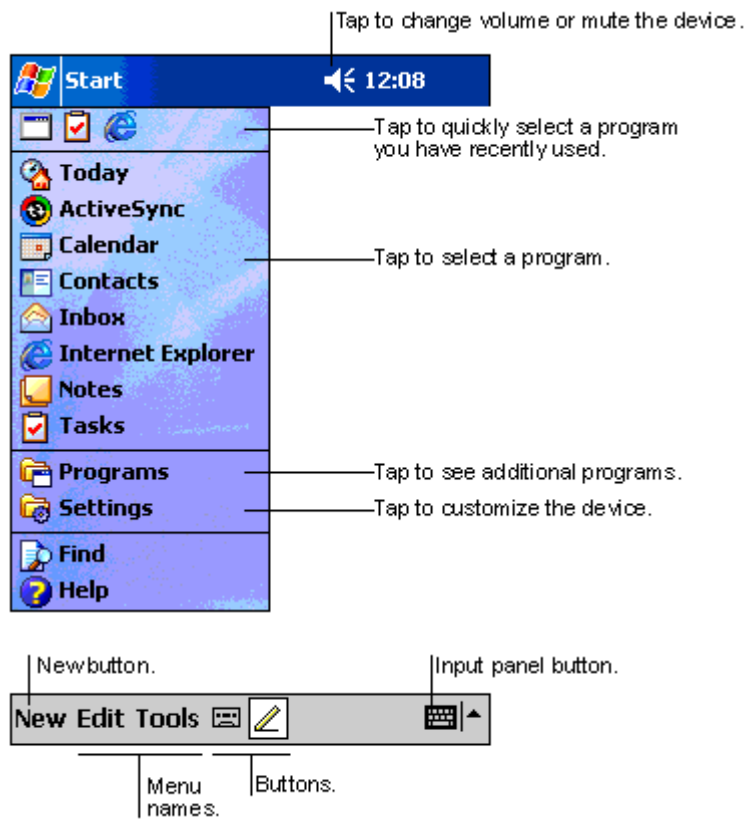
The Today Screen

When you turn on your device for the first time each day (or after 4 hours of inactivity), you'll see the Today screen. You can also display it by tapping  and then **Today**. On the Today screen, you can see at a glance the information you need for the day.



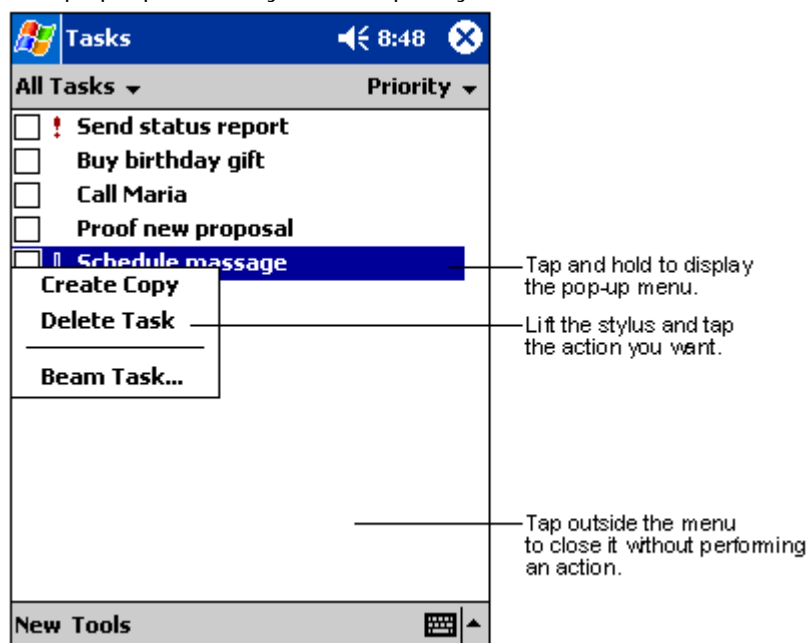
Navigation Bar and Command Bar

The navigation bar is located at the top of the screen. It displays the active program and current time, and allows you to switch to programs and close screens. The command bar is displayed at the bottom of the screen. Use the menus and buttons to perform tasks in programs.



Pop-up Menus

With pop-up menus, you can quickly choose an action for an item.



Input Methods

You can enter information in any program on your device by typing with the soft keyboard, or writing using Block Recognizer, Letter Recognizer and Transcriber.

The Letter Recognizer input panel is divided into three writing areas. Letters written in the left area (labeled **ABC**) will create uppercase letters, and letters written in the middle area (labeled **abc**) will create lowercase letters. The right area (labeled **123**) is for writing numbers, symbols, special characters, and punctuation.

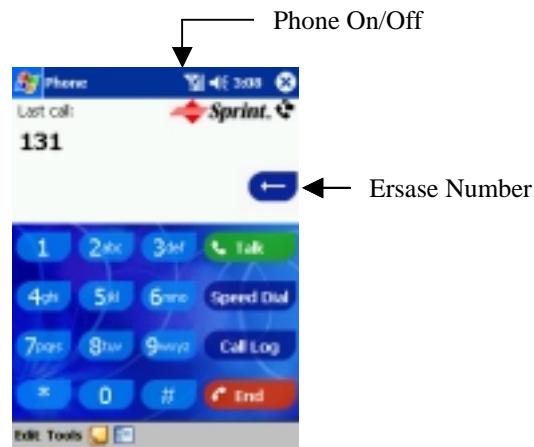
The Block Recognizer input panel is divided into two writing areas. Letters written in the left area (labeled **abc**) will create lowercase letters. The right area (labeled **123**) is for writing numbers, symbols, special characters, and punctuation.

For more information on using Letter Recognizer and Block Recognizer and for demos of all characters, tap the question mark next to the writing area on the Letter Recognizer input panel.

Phone application

Samsung phone gives you advanced phone capabilities.

Press your Talk Key on the bottom of the LCD to open the phone application.



Making a call

Key in the phone number by tapping the number digits in the Phone screen with the stylus and the **Talk** button to dial the number.

Ending a call

Tap the **END** button.

Answering a call

When somebody calls you, the phone rings. If the caller can be identified, the caller's phone number(or name if prestored in your Address book) is displayed.

To answer the call, tap any button on the Phone screen(except **END**).

You can answer a call while using another application. The screen alert you with the incoming call message Tap **Yes** to answer the call, or **No** to reject the call.

Redialing Calls

Tap **Talk** for a second.

Another Applications

Clander

This lets you quickly and easily schedule appointments or any kind of activity associated with a time and date.

Contacts

This enables you to keep names, addresses, phone numbers and other information about your personal or business contacts.

Inbox

Your phone can receive e-mail and text messages. Also, your phone can send e-mail and text messages.

Notes

This provides a place to take notes that are not associated with records in Date Book, Address Book, or to Do List.

Tasks

This is a convenient place to create reminders and prioritize the things that you have to do.

Program

You can use programs. game, claculator, pocket excel, pocket word and etc.

Setting Preferences for Your Phone

The Prefs screens enables you to customize the configuration options on your phone.

Personal – Set the buttons, inputs, menus, owner information, password, phone, sound¬ification and today.

System – Set the backlight, clock, contrast, memory, power, regional settings, remove programs and screen.

Connections – Configure avant go connect, beam, connections and network adapters.

Installing ActiveSync


Using Microsoft ActiveSync, you can *synchronize* the information on your desktop computer with the information on your device. Synchronization compares the data on your device with your desktop computer and updates both computers with the most recent information.

Before you begin synchronization, install ActiveSync on your desktop computer from the Pocket PC Companion CD. ActiveSync is already installed on your device.

- Insert the Pocket PC Companion CD into the CD-ROM drive of your desktop computer. Click the yellow arrow, click **Start Here**, and then follow the directions on your screen.

After installation is complete, the ActiveSync Setup Wizard helps you connect your device to your desktop computer, set up a partnership so you can synchronize information between your device and your desktop computer, and customize your synchronization settings. Your first synchronization process will automatically begin when you finish using the wizard.

For More Information

For information on:	See this source:
Programs on your device	The User's Guide and device Help. To view Help, tap  and then Help .
Additional programs that can be installed on the device	The Pocket PC Companion CD.
Connecting to and synchronizing with a desktop computer	ActiveSync Help on your desktop computer. To view Help, start ActiveSync, click Help , and then click Microsoft ActiveSync Help .
Last-minute updates and detailed technical information	The Read Me files, located in the Microsoft ActiveSync folder on the desktop computer and on the Pocket PC Companion CD.
Up-to-date information on Pocket PC	http://www.microsoft.com/mobile/pocketpc

Licensed by Palm Computing Inc. under the following patent.
U.S Patent No. 406-1243-01

* * *

Licensed by Qualcomm incorporated under one or more of the
following patents.

U.S Patent No. 4,901,307	5,056,109	5,099,204
5,101,501	5,103,459	5,107,225
5,109,390		