

- * Depending on the software installed or your service provider or country, some of the descriptions in this guide may not match your phone exactly.
- * Depending on your country, your phone and accessories may appear different from the illustrations in this guide.

SAMSUNG ELECTRONICS



World Wide Web
<http://www.samsungmobile.com>



SPH-M610

User's Guide

Intellectual Property

All Intellectual Property, as defined below, owned by or which is otherwise the property of Samsung or its respective suppliers relating to the SAMSUNG Phone, including but not limited to, accessories, parts, or software relating there to (the "Phone System"), is proprietary to Samsung and protected under federal laws, state laws, and international treaty provisions. Intellectual Property includes, but is not limited to, inventions (patentable or unpatentable), patents, trade secrets, copyrights, software, computer programs, and related documentation and other works of authorship. You may not infringe or otherwise violate the rights secured by the Intellectual Property. Moreover, you agree that you will not (and will not attempt to) modify, prepare derivative works of, reverse engineer, decompile, disassemble, or otherwise attempt to create source code from the software. No title to or ownership in the Intellectual Property is transferred to you. All applicable rights of the Intellectual Property shall remain with SAMSUNG and its suppliers.

Samsung Telecommunications America (STA), Inc.

Headquarters:

1301 East Lookout Drive Suite 150 Richardson,
TX 75082

Internet Address: <http://www.samsungusa.com>

©2004 Samsung Telecommunications America, Inc. is a registered trademark of Samsung Electronics America, Inc. and its related entities.

Licensed by Qualcomm Incorporated under one or more of the following patents: U.S. Patent No. 4, 901, 307; 5, 056, 109; 5, 099, 204; 5, 101, 501; 5, 103, 459; 5, 107, 225; 5, 109, 390.

Printed in South Korea
GH68-xxxxxA

Openwave® is a registered Trademark of Openwave, Inc.
RSA® is a registered Trademark of RSA Security, Inc.

Disclaimer of Warranties; Exclusion of Liability

EXCEPT AS SET FORTH IN THE EXPRESS WARRANTY CONTAINED ON THE WARRANTY PAGE ENCLOSED WITH THE PRODUCT, THE PURCHASER TAKES THE PRODUCT "AS IS", AND SAMSUNG MAKES NO EXPRESS OR IMPLIED WARRANTY OF ANY KIND WHATSOEVER WITH RESPECT TO THE PRODUCT, INCLUDING BUT NOT LIMITED TO THE MERCHANTABILITY OF THE PRODUCT OR ITS FITNESS FOR ANY PARTICULAR PURPOSE OR USE; THE DESIGN, CONDITION OR QUALITY OF THE PRODUCT; THE PERFORMANCE OF THE PRODUCT; THE WORKMANSHIP OF THE PRODUCT OR THE COMPONENTS CONTAINED THEREIN; OR COMPLIANCE OF THE PRODUCT WITH THE REQUIREMENTS OF ANY LAW, RULE, SPECIFICATION OR CONTRACT PERTAINING THERETO. NOTHING CONTAINED IN THE INSTRUCTION MANUAL SHALL BE CONSTRUED TO CREATE AN EXPRESS OR IMPLIED WARRANTY OF ANY KIND WHATSOEVER WITH RESPECT TO THE PRODUCT. IN ADDITION, SAMSUNG SHALL NOT BE LIABLE FOR ANY DAMAGES OF ANY KIND RESULTING FROM THE PURCHASE OR USE OF THE PRODUCT OR ARISING FROM THE BREACH OF THE EXPRESS WARRANTY, INCLUDING INCIDENTAL, SPECIAL OR CONSEQUENTIAL DAMAGES, OR LOSS OF ANTICIPATED PROFITS OR BENEFITS.



Important safety precautions



Failure to comply with the following precautions may be dangerous or illegal.

Drive safely at all times

Do not use a hand-held phone while driving. Park the vehicle first.

Switch off the phone when refuelling

Do not use the phone at a refuelling point (service station) or near fuels or chemicals.

Switch off in an aircraft

Wireless phones can cause interference. Using them in an aircraft is both illegal and dangerous.

Switch off the phone near all medical equipment

Hospitals or health care facilities may be using equipment that could be sensitive to external radio frequency energy. Follow any regulations or rules in force.

Interference

All wireless phones may be subject to interference, which could affect their performance.



Be aware of special regulations

Meet any special regulations in force in any area and always switch off your phone whenever it is forbidden to use it, or when it may cause interference or danger.

Water resistance

Your phone is not water-resistant. Keep it dry.

Sensible use

Use only in the normal position (held to the ear). Avoid unnecessary contact with the antenna when the phone is switched on.

Emergency calls

Key in the emergency number for your present location, then press .

Keep your phone away from small children

Keep the phone and all its parts, including accessories, out of the reach of small children.

Accessories and batteries

Use only Samsung-approved batteries and accessories, such as headsets and PC data cables. Use of any unauthorized accessories could damage you or your phone and may be dangerous.

- The phone could explode if the battery is replaced with an incorrect type.
- Dispose of used batteries according to the manufacturer's instructions.



At very high volumes, prolonged listening to a headset can damage your hearing.

Qualified service

Only qualified service personnel may repair your phone.

For more detailed safety information, see "Safety" on page 19.

Contents	
Unpack	3
<i>Make sure you have each item</i>	
Your phone	3
<i>Keys, features, and locations</i>	
Get started	4
<i>First steps to operating your phone</i>	
Install and charge the phone	4
Power on or off.....	5
Keys	6
Menu functions	9
<i>All menu options listed</i>	

Solve problems	17
<i>Help and personal needs</i>	
Safety	19

Unpack

Make sure you have each item



Phone



Travel Adapter



Battery



User's Guide

You can obtain various accessories from your local Samsung dealer.

- ☒ The items supplied with your phone and the accessories available at your Samsung dealer may vary, depending on your country or service provider.

Your phone

Keys, features, and locations

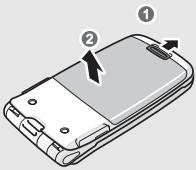


Get started

First steps to operating your phone

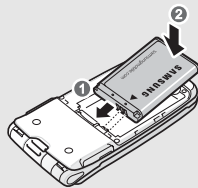
Install and charge the phone

- 1** Remove the battery cover.

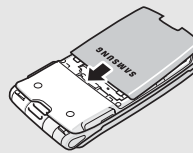


- ☒ If the phone is already on, first turn it off by pressing and holding **[END]**.

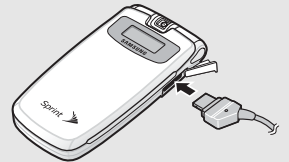
- 2** Install the battery.



- 3** Reattach the cover.



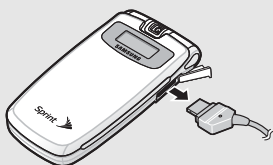
- 4** Plug the travel adapter into the phone.



- 5** Plug the adapter into a standard AC wall outlet.


- 6** When the phone is completely charged (the battery icon becomes still), unplug the adapter from the power outlet.

7 Remove the adapter from the phone.



Low battery indicator

When the battery is low:

- a warning tone sounds,
- the battery low message displays, and
- the empty battery icon  blinks.

If the battery level becomes too low, the phone automatically turns off. Recharge your battery.

Power on or off

Switch on

1. Open the phone.

Do not switch on the phone when mobile phone use is prohibited.

2. Press and hold [**END**] to turn on the phone.




Switch off




1. Open the phone.

2. Press and hold [**END**].

Get started

Keys

	Perform the function indicated on the bottom line of the display. Press the left soft key to access My Favorites menu and the right soft key to find contacts in Contacts menu.
	In Idle mode, access your favorite menus directly. In Menu mode, scroll through menu options.
	In Idle mode, access Menu mode. In Menu mode, select the highlighted menu option.

	Make or answer a call. In Idle mode, retrieve numbers recently dialed, missed, or received. During a call, activate or deactivate the speakerphone feature.
	Access the Pictures menu so you can select Camera or Camcorder . In Camera mode or Camcorder mode, take a photo or start recording a video.
	Make or answer a call. In Idle mode, retrieve numbers recently dialed, missed, or received.



Delete characters from the display.
In Menu mode, return to the previous menu level.



Press and hold to switch the phone on and off.
End a call.
In Menu mode, cancel input and return the phone to Idle mode.



Enter numbers, letters, and some special characters.



In Idle mode, press and hold [**1**] to access your voicemail server. Press and hold [**0**] to enter an international call prefix.



Enter special characters.
In a text input mode, press [*****] to change case. Press [**#**] to insert a space.



Adjust the phone volume.
In Idle mode, with the phone open, adjust the ringer volume. With the phone closed, press to turn on the backlight.

Overview of menu functions

To access Menu mode, press **[MENU OK]** in Idle mode. The order of menus may differ depending on the menu style you select.

1 Web

2 Call History

- 1 Outgoing Calls
- 2 Incoming Calls
- 3 Missed Calls
- 4 Recent Calls

3 Media Player

4 On Demand

5 Missed Alerts

6 Music

7 My Content

- Games
- Themes
- Ringers
- Screen Savers
- Applications
- IM & Email
- Call Tones

8 Messaging

- 1 Send Message
- 2 Text Message
- 3 Picture Mail
- 4 VoiceSMS
- 5 IM & Email
- 6 Voicemail
- 7 Chat & Dating
- 8 Premium Msg
- 9 Settings

9 Tools

- 1 Mass Storage
- 2 Voice Service
- 3 Voice Memo
- 4 Bluetooth
- 5 Planner
- 6 Memo Pad
- 7 World Time
- 8 Alarm Clock
- 9 Calculator
- 0 Set Time

* Pictures

- 1 Camera
- 2 Camcorder
- 3 Picture Mail
- 4 My Albums
- 5 Order Prints
- 6 PictBridge Print
- 7 Settings and Info

0 Contacts

- 1 Find
- 2 Add New Entry
- 3 Speed Dial #'s
- 4 Group
- 5 My Name Card
- 6 Wireless Backup
- 7 Services

Settings

- 1 Display
- 2 Sounds
- 3 Power Vision
- 4 Voice Service
- 5 Wireless Backup
- 6 Security
- 7 Roaming
- 8 Launch Pad
- 9 Others
- 0 Phone Info
- * Bluetooth

Menu functions

All menu options listed

Web

The Wireless Application Protocol (WAP) browser on your phone allows you to access the wireless web. From the wireless web, you can access up-to-date information and a wide variety of media content, such as games, themes, ringtones, screensavers and music files.

Selecting this menu launches the web browser and accesses the homepage of your service provider.

To access this menu, press [**MENU OK**] in Idle mode and select **Web**.

Call History

Use this menu to view the calls you have dialed, received, or missed.

To access this menu, press [**MENU OK**] in Idle mode and select **Call History**.

Outgoing Calls

This menu displays the most recent calls you have dialed.

Incoming Calls

This menu displays the most recent calls you have received.

Missed Calls

This menu displays the most recent calls you did not answer.

Recent Calls

This menu displays the most recent calls dialed, received, or missed.

Menu functions

Media Player

Use this menu to play music or video files from a memory card or stream the files on a media channel.

To access this menu, press **[MENU OK]** in Idle mode and select **Media Player**.

Channel Listing

You can access music or video files on channels supplied by your service provider and stream the files.

Memory Card

You can access music or video files stored on a memory card

Play List

You can access music or video files from a play list you have created.

On Demand

Use this menu to easily retrieve the most popular web information. Using zip code, **On Demand** displays a variety of top categories such as news, sports, weather, money, and more, tailored to your preferred area.

To access this menu, press **[MENU OK]** in Idle mode and select **On Demand**.

Missed Alerts

When you are unable to acknowledge an alarm for scheduled items or alarm alerts, or when you have missed a call or an alert for a message, the phone stores the alarm or alert until you confirm it.

To access this menu, press **[MENU OK]** in Idle mode and select **Missed Alerts**.

Music

Use this menu to access Music Store, an online music distribution site that lets you purchase and download music files to play on your phone.

To access this menu, press [MENU OK] in Idle mode and select **Music**.

My Content

The **My Content** menu allows you to access games, themes, ringtones, screensavers, and various applications stored in your phone's memory. You can also manage the contents you have downloaded from the web.

To access this menu, press [MENU OK] in Idle mode and select **My Content**.

Games

Use this menu to access and download games.

Themes

Use this menu to access and download various themes.

Ringers

Use this menu to access ringtones and sound clips you have downloaded from the wireless web.

Screen Savers

Use this menu to access screensavers you have downloaded from the wireless web.

Applications

Use this menu to access various applications you have downloaded from the wireless web.

IM & Email

Use this menu to access instant messaging applications you have downloaded.

Call Tones

Use this menu to access and download various call tones.

Menu functions

Messaging

Use the **Messaging** menu to send and receive text messages, multimedia messages, and hand written messages.

To access this menu, press [**MENU OK**] in Idle mode and select **Massaging**.

Send Message

Use this menu to create and send messages.

Text Message

Use this menu to access messages you have received, sent, or which have failed in sending.

Picture Mail

Use this menu to access multimedia messages you have received, sent, or saved.

VoiceSMS

Use this menu to access voice SMS messages you have received.

IM & Email

IM (Instant Messaging) service is a way of sending short, simple messages that are delivered immediately to users online at that moment. This menu provides you with access to popular instant messaging clients.

Voicemail

Use this menu to connect to the voicemail server and access your voicemail.

Chat & Dating

This menu provides you with access to wireless chatting services.

Premium Msg

Use this menu to access premium messages including images, videos, and audio received from your service provider, or a third party provider. For further details on receiving this message, contact your service provider.

Settings

Use this menu to set up various options for using the messaging services.

Tools

Use this menu to access Bluetooth services, keep track of your schedule, create tasks, make memos, or set alarms. You can also use your phone as a countdown timer, world clock, and calculator.

To access this menu, press [MENU OK] in Idle mode and select **Tools**.

Mass Storage

Use this menu to connect your phone to a PC and copy media files from/to a PC, as you would use an external memory disk.

Voice Service

Your phone provides a set of powerful voice-enabled features that enhance its hands-free capabilities.

Voice Memo

Use this menu to record voice memos.

Bluetooth

Use this menu to connect your phone to other compatible devices wirelessly using Bluetooth technology. Using Bluetooth wireless, you can connect the phone wirelessly to a Bluetooth headset or hands-free kit to talk hands-free.

Planner

Use this menu to keep track of your schedule, make your task list. You can also use your phone as a countdown timer.

Memo Pad

Use this menu to make memos of important things you need to remember.

World Time

Use this menu to find out the current time in another part of the world.

Menu functions

Alarm Clock

Use this menu to set alarms to sound at specific times.

Calculator

Use this menu to perform basic arithmetic functions, such as addition, subtraction, multiplication, and division.

Set Time

Use this menu to set the current time and date.

Pictures

You can use the camera module embedded in your phone to take photos and record videos.

To access this menu, press **[MENU OK]** in Idle mode and select **Pictures**.

Camera

You can take photos using the camera module embedded in your phone.

Camcorder

You can record a video of what is displayed on the camera screen and save it.

Picture Mail

Use this menu to access multimedia messages you have received, sent, or saved.

My Albums

Use this menu to access your photos or video clips in your phone's memory or on a memory card. You can also access your online album.

Order Prints

Use this menu to send photos to a destination preset by your service provider, or a photo printing shop via Picture messaging service.

PictBridge Print

Use this menu to print images via a Pictbridge-compatible printer.

Settings and Info

Use this menu to change the default settings for using the camera or camcorder, or access your account or memory information.

Contacts

You can store phone numbers with associated names in your phone's memory called Contacts to make it easy for you to make a call without having to remember the phone number.

To access this menu, press [MENU OK] in Idle mode and select **Contacts**.

Find

Use this menu to search for numbers in Contacts.

Add New Entry

Use this menu to add a new contact to Contacts.

Speed Dial #'s

Once you have stored phone numbers in Contacts, you can set up to 98 speed-dial entries and then dial them easily by pressing and holding the associated one or two number keys.

Group

Use this menu to organize your contacts in caller groups.

My Name Card

Use this menu to create a name card and send it to other people.

Wireless Backup

Use this menu to forward files or information on your phone directly to a Sprint data base. The information can be accessed easily online and synced with a computer.

Menu functions

Services

Your phone is preprogrammed with contact numbers for various services.

Settings

The **Settings** menu provides you with various setting options to customize the phone to your preferences and needs. You can also reset the settings to their default status. To access this menu, press [MENU OK] in Idle mode and select **Settings**.

Display

Use this menu to change settings for the display and backlight.

Sounds

Use this menu to customize various sound settings.

Power Vision

Use this menu to change the settings for using Power Vision services or update the connection profile.

Voice Service

Use this menu to customize settings for voice tools.

Wireless Backup

Use this menu to customize settings for Wireless Backup.

Security

Use this menu to protect the phone against unauthorized use.

Roaming

This menu provides you with options for selecting a network.

Launch Pad

You can use the Navigation keys as shortcuts to access specific menus directly from Idle mode. Use this menu to assign a shortcut to a key.

Others

You can customize various phone settings.

Phone Info

Use this menu to access your phone information.

Bluetooth

Use this menu to change the Bluetooth settings.

Solve problems

Help and personal needs

To save the time and expense of an unnecessary service call, perform the simple checks in this section before contacting a service professional.

“No Service,” “Network Failure,” or “Not Done” displays

- The network connection has been lost. You may be in a weak signal area. Move and try again.
- You are trying to access an option for which you have no subscription with your service provider. Contact the service provider for further details.

You have entered a number but it was not dialed

- Be sure that you have pressed [TALK].
- Be sure that you have accessed the right cellular network.
- Be sure that you have not set an outgoing call barring option.

Solve problems

Your correspondent cannot reach you

- Be sure that your phone is switched on. ([END] pressed for more than one second.)
- Be sure that you are accessing the correct cellular network.
- Be sure that you have not set an incoming call barring option.

Your correspondent cannot hear you speaking

- Be sure that you have switched on the microphone.
- Be sure that you are holding the phone close enough to your mouth. The microphone is located at the bottom of the phone.

The phone starts beeping and “Warning Low Battery” flashes on the display

- Your battery is insufficiently charged. Recharge the battery.

The audio quality of the call is poor

- Check the signal strength indicator on the display (📶). The number of bars indicates the signal strength from strong (📶) to weak (📶).

- Try moving the phone slightly or moving closer to a window if you are in a building.

No number is dialed when you re-call a Contacts entry

- Use the **Find** menu to ensure the number has been stored correctly.
- Re-store the number, if necessary.

The battery does not charge properly or the phone sometimes turns itself off

- Wipe the charging contacts both on the phone and on the battery with a clean soft cloth.

If the above guidelines do not help you to solve the problem, take note of:

- The model and serial numbers of your phone
- Your warranty details
- A clear description of the problem
- Then contact your local dealer or Samsung after-sales service.

Safety

Getting the Most Out of Your Reception

Keeping Tabs on Signal Strength

The quality of each call you make or receive depends on the signal strength in your area. Your phone informs you of the current signal strength by displaying a number of bars next to the signal strength icon. The more bars displayed, the stronger the signal. If you're inside a building, being near a window may give you better reception.

Understanding the Power Save Feature

If your phone is unable to find a signal after 15 minutes of searching, a Power Save feature is automatically activated. If your phone is active, it periodically rechecks service availability; you can also check it yourself by pressing any key. Anytime the Power Save feature is activated, a message is displayed on the screen. When a signal is found, your phone returns to Standby mode.

Understanding How Your Phone Operates

Your phone is basically a radio transmitter and receiver. When it's turned on, it receives and transmits radiofrequency (RF) signals. When you use your phone, the system handling your call controls the power level. This power can range from 0.006 watts to 0.2 watts in digital mode.

Knowing Radio Frequency Safety

The design of your Sprint PCS Phone complies with updated NCRP standards described below.

In 1991-92, the Institute of Electrical and Electronics Engineers (IEEE) and the American National Standards Institute (ANSI) joined in updating ANSI's 1982 standard for safety levels with respect to human exposure to RF signals. More than 120 scientists, engineers and physicians from universities, government health agencies and industries developed this updated standard after reviewing the available body of research. In 1993, the Federal Communications Commission (FCC) adopted this updated standard in a regulation. In August 1996, the

Safety

FCC adopted hybrid standard consisting of the existing ANSI/IEEE standard and the guidelines published by the National Council of Radiation Protection and Measurements (NCRP).

Maintaining Your Phone's Peak Performance

There are several simple guidelines to operating your phone properly and maintaining safe, satisfactory service.

- Speak directly into the mouthpiece.
- Avoid exposing your phone and accessories to rain or liquid spills.

If your phone does get wet, immediately turn the power off and remove the battery.

- ☒ For the best care of your phone, only Sprint authorized personnel should service your phone and accessories. Faulty service may void the warranty.

Maintaining Safe Use of and Access to Your Phone

FAILURE TO FOLLOW THE INSTRUCTIONS OUTLINED MAY LEAD TO SERIOUS PERSONAL INJURY AND POSSIBLE PROPERTY DAMAGE

Using Your Phone While Driving

Talking on your phone while driving (or operating the phone without a hands-free device) is prohibited in some jurisdictions. Laws vary as to specific restrictions. Remember that safety always comes first.

- ☒ Purchase an optional hands-free accessory at your local Sprint Store, or call the Sprint PCS Accessory HotlineSM at 1-800-974-2221 or by dialing **#222** on your Sprint PCS Phone.

Following Safety Guidelines

To operate your phone safely and efficiently, always follow any special regulations in a given area. Turn your phone off in areas where use is forbidden or when it may cause interference or danger.

Using Your Phone Near Other Electronic Devices

Most modern electronic equipment is shielded from radiofrequency (RF) signals. However, RF signals from wireless phones may affect inadequately shielded electronic equipment.

RF signals may affect improperly installed or inadequately shielded electronic operating systems and/or entertainment systems in motor vehicles. Check with the manufacturer or their representative to determine if these systems are adequately shielded from external RF signals. Also check with the manufacturer regarding any equipment that has been added to your vehicle.

Consult the manufacturer of any personal medical devices, such as pacemakers and hearing aids, to determine if they are adequately shielded from external RF signals.

- ☒ Always turn off the phone in health care facilities and request permission before using the phone near medical equipment.

Turning Off Your Phone Before Flying

Turn off your phone before boarding any aircraft. To prevent possible interference with aircraft systems, the U.S. Federal Aviation Administration (FAA) regulations require you to have permission from a crew member to use your phone while the plane is on the ground. To prevent any risk of interference, FCC regulations prohibit using your phone while the plane is in the air.

Turning Off Your Phone in Dangerous Areas

To avoid interfering with blasting operations, turn your phone off when in a blasting area or in other areas with signs indicating two-way radios should be turned off. Construction crews often use remotecontrol RF devices to set off explosives.

Turn your phone off when you're in any area that has a potentially explosive atmosphere. Although it's rare, your phone and accessories could generate sparks. Sparks can cause an explosion or fire, resulting in bodily injury or even death. These areas are often, but not always, clearly marked. They include:

Safety

- Fueling areas such as gas stations.
- Below deck on boats.
- Fuel or chemical transfer or storage facilities.
- Areas where the air contains chemicals or particles such as grain, dust, or metal powders.
- Any other area where you would normally be advised to turn off your vehicle's engine.

- ☒ Never transport or store flammable gas, liquid or explosives in the compartment of your vehicle that contains your phone or accessories.

Restricting Children's Access to Your Phone

Your phone is not a toy. Do not allow children to play with it as they could hurt themselves and others, damage the phone or make calls that increase your Sprint PCS Invoice.

Caring for the Battery

Protecting Your Battery

The guidelines listed below help you get the most out of your battery's performance.

- Use only Sprint-approved batteries and battery chargers. These chargers are designed to maximize battery life. Using other batteries or chargers voids your warranty and may cause damage.
- In order to avoid damage, charge the battery only in temperatures that range from 32° F to 113° F (0° C to 45° C).
- Don't use the battery charger in direct sunlight or in high humidity areas, such as the bathroom.
- Never dispose of the battery by incineration.
- Keep the metal contacts on top of the battery clean.
- Don't attempt to disassemble or short-circuit the battery.

- The battery may need recharging if it has not been used for a long period of time.
- It's best to replace the battery when it no longer provides acceptable performance. It can be recharged hundreds of times before it needs replacing.
- Don't store the battery in high temperature areas for long periods of time. It's best to follow these storage rules:
Less than one month:
4° F to 140° F (-20° C to 60° C)
More than one month:
4° F to 113° F (-20° C to 45° C)

Disposal of Lithium Ion (Li-Ion) Batteries

For safe disposal options of your Li-Ion batteries, contact your nearest Sprint authorized service center.

Special Note: Be sure to dispose of your battery properly. In some areas, the disposal of batteries in household or business trash may be prohibited.

- ☒ For safety, do not handle a damaged or leaking Li-Ion battery.

Acknowledging Special Precautions and the FCC Notice

FCC Notice

This device complies with Part 15 of the FCC Rules. Operation is subject to the following two conditions: (1) this device may not cause harmful interference, and (2) this device must accept any interference received, including interference that may cause undesired operation.

This equipment has been tested and found to comply with the limits for a Class B digital device, pursuant to part 15 of the FCC Rules. These limits are designed to provide reasonable protection against harmful interference in a residential installation. This equipment generates, uses and can radiate radio frequency energy and, if not installed and used in accordance with the instructions, may cause harmful interference to radio communications. However, there is no guarantee that interference will not occur in a particular installation. If this equipment does cause harmful interference to radio or television reception, which can be determined by turning the equipment off

Safety

and on, the user is encouraged to try to correct the interference by one or more of the following measures:

- Reorient or relocate the receiving antenna.
- Increase the separation between the equipment and receiver.
- Connect the equipment into an outlet on a circuit different from that to which the receiver is connected.
- Consult the dealer or an experienced radio/TV technician for help

Cautions

Changes or modifications made in the radio phone, not expressly approved by Samsung, will void the user's authority to operate the equipment. Only use approved batteries, antennas and chargers. The use of any unauthorized accessories may be dangerous and void the phone warranty if said accessories cause damage or a defect to the phone.

Although your phone is quite sturdy, it is a complex piece of equipment and can be broken. Avoid dropping, hitting, bending or sitting on it.

Body-Worn Operation

To maintain compliance with FCC RF exposure guidelines, if you wear a handset on your body, use the Sprint supplied or approved carrying case, holster or other body-worn accessory. Use of non-Sprint approved accessories may violate FCC RF exposure guidelines.

For more information about RF exposure, visit the FCC Website at www.fcc.gov.

Specific Absorption Rates (SAR) for Wireless Phones

The SAR is a value that corresponds to the relative amount of RF energy absorbed in the head of a user of a wireless handset.

Health and safety information

Exposure to Radio Frequency (RF) Signals

Certification Information (SAR)

Your wireless phone is a radio transmitter and receiver. It is designed and manufactured not to exceed the exposure limits for radio frequency (RF) energy set by the Federal Communications Commission (FCC) of the U.S. government. These FCC exposure limits are derived from the recommendations of two expert organizations, the National Counsel on Radiation Protection and Measurement (NCRP) and the Institute of Electrical and Electronics Engineers (IEEE). In both cases, the recommendations were developed by scientific and engineering experts drawn from industry, government, and academia after extensive reviews of the scientific literature related to the biological effects of RF energy.

The exposure limit set by the FCC for wireless mobile phones employs a unit of measurement known as the Specific Absorption Rate (SAR). The SAR is a measure of the rate of absorption of RF energy by the human body expressed in units of watts per kilogram (W/kg). The FCC requires wireless phones to comply with a safety limit of 1.6 watts per kilogram (1.6 W/kg). The FCC exposure limit incorporates a substantial margin of safety to give additional protection to the public and to account for any variations in measurements.

SAR tests are conducted using standard operating positions accepted by the FCC with the phone transmitting at its highest certified power level in all tested frequency bands. Although the SAR is determined at the highest certified power level, the actual SAR level of the phone while operating can be well below the maximum value. This is because the phone is designed to operate at multiple power levels so as to use only the power required to reach the network. In general, the closer you are to a wireless base station antenna, the lower the power output.

The SAR value of a phone is the result of an extensive testing, measuring and calculation process. It does not represent how much RF the phone emits. All phone models are tested at their highest value in strict laboratory settings. But when in operation, the SAR of a phone can be substantially less than the level reported to the FCC. This is because of a variety of factors including its proximity to a base station antenna, phone design and other factors. What is important to remember is that each phone meets strict federal guidelines. Variations in SARs do not represent a variation in safety.

All phones must meet the federal standard, which incorporates a substantial margin of safety. As stated above, variations in SAR values between different model phones do not mean variations in safety. SAR values at or below the federal standard of 1.6 W/kg are considered safe for use by the public.

Before a new model phone is available for sale to the public, it must be tested and certified to the FCC that it does not exceed the exposure limit established by the FCC. Tests for each model phone are performed in

positions and locations (e.g. at the ear and worn on the body) as required by the FCC.

The highest SAR values for this model phone as reported to the FCC are Head:0.938 W/Kg(CDMA), 1.09 (PCS), Body- worn:0.646 W/Kg(CDMA), 0.731 (PCS).

For body worn operations, this model phone has been tested and meets the FCC RF exposure guidelines when used with a Samsung accessory designated for this product or when used with an accessory that contains no metal and that positions the handset a minimum 1.5 cm from the body.

FCC Radiofrequency Emission

This phone meets the FCC Radiofrequency Emission Guidelines.

FCC ID number: **A3LSPHM610**. More information on the phone's SAR can be found from the following FCC Website: <http://www.fcc.gov/oet/fccid>.



Safety

Owner's Record

The model number, regulatory number and serial number are located on a nameplate inside the battery compartment. Record the serial number in the space provided below. This will be helpful if you need to contact us about your phone in the future.

Model: **Sprint PCS Vision Multimedia Phone MM-M610 by Samsung®**

Serial No.:

Phone Guide Proprietary Notice

CDMA Technology is licensed by QUALCOMM Incorporated under one or more of the following patents:

4,901,307 5,109,390 5,267,262 5,416,797
5,506,865 5,544,196 5,657,420 5,101,501
5,267,261 5,414,796 5,504,773 5,535,239
5,600,754 5,778,338 5,228,054 5,337,338
5,710,784 5,056,109 5,568,483 5,659,569
5,490,165 5,511,073

T9 Text Input is licensed by Tegic Communications and is covered by U.S. Pat. 5,818,437, U.S. Pat. 5,953,541, U.S. Pat. 6,011,554 and other patents pending.

- Phone Guide template version 4A (November 2005)



Hearing Aid Compatibility with Mobile Phones

When some mobile phones are used near some hearing devices (hearing aids and cochlear implants), users may detect a buzzing, humming, or whining noise. Some hearing devices are more immune than others to this interference noise, and phones also vary in the amount of interference they generate.

The wireless telephone industry has developed ratings for some of their mobile phones, to assist hearing device users in finding phones that may be compatible with their hearing devices. Not all phones have been rated. Phones that are rated have the rating on their box or a label on the box.

The ratings are not guarantees. Results will vary depending on the user's hearing device and hearing loss. If your hearing device happens to be vulnerable to interference, you may not be able to use a rated phone successfully. Trying out the phone with your hearing device is the best way to evaluate it for your personal needs.

M-Ratings: Phones rated M3 or M4 meet FCC requirements and are likely to generate less interference to hearing devices than phones that are not labeled. M4 is the better/higher of the two ratings.

T-Ratings: Phones rated T3 or T4 meet FCC requirements and are likely to be more usable with a hearing device's telecoil ("T Switch" or "Telephone Switch") than unrated phones. T4 is the better/higher of the two ratings. (Note that not all hearing devices have telecoils in them.)

Hearing devices may also be measured for immunity to this type of interference. Your hearing device manufacturer or hearing health professional may help you find results for your hearing device. The more immune your hearing aid is, the less likely you are to experience interference noise from mobile phones.