

SAMSUNG

SAMSUNG MULTI VIEW

# Samsung Multi View 3D Glasses

## SSG-5900CR

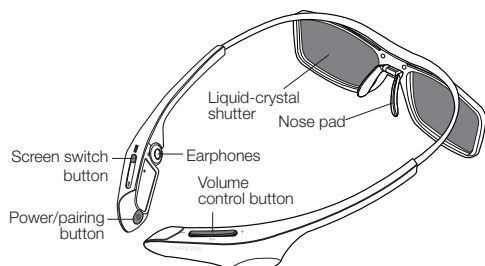
### User Guide

#### Features

The Smart Dual View 3D Glasses are used to view 3D or Smart Dual View videos. To view 3D or Smart Dual View videos, you have to use a pair of Smart Dual View 3D Glasses with a Samsung ES9500 TV. The product can establish a connection with another device through the 2.4GHz or 5GHz RF frequency.

- ✎ The Samsung Smart Dual View 3D Glasses are not connected to other wireless communication devices.
- ✎ Smart Dual View and earphones feature is now supported to the only ES9500 TV released in 2012.
- ✎ In the D and E series released after 2011, you can use the glasses as regular 3D glasses without the earphones feature.
- ✎ You can enjoy TV sound using the earphones of the glasses in 3D or Smart Dual View mode. When the sound comes out from the earphones, no sound comes from the TV speakers. The TV speakers can be activated by using the menu. For the menu path, refer to the TV menu section.

#### Samsung Smart Dual View 3D Glasses At a Glance



#### Components

- Smart Dual View 3D Glasses
  - Cleaning cloth
  - Micro USB cable
  - Rubbers for earphones
- ✎ To wear the Smart Dual View 3D Glasses over eyeglasses, detach the nose pad from the Smart Dual View 3D Glasses.
- ✎ Refer to the back cover of the user guide for information on how to attach or detach the nose pad.
- ✎ The Smart Dual View 3D glasses are supplied with pre-installed medium-size earphone inserts. Large-sized inserts are supplied as a separate package.

#### Using the 3D glasses

##### Pairing the Smart Dual View 3D Glasses

- ✎ **What is pairing?** Pairing is a process that establishes a connection between the Smart Dual View TV and the Smart Dual View 3D Glasses in order to exchange information.



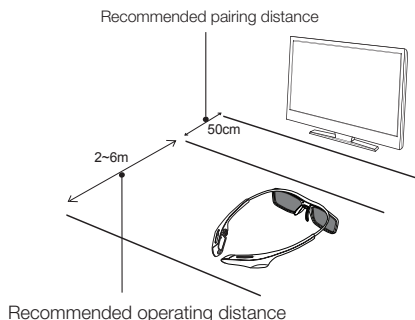
##### To perform pairing

Turn on the TV. Press and hold the Power/Pairing button on the Smart Dual View 3D Glasses for 2 seconds or longer to run the pairing operation. On the screen of the ES9500 TV, the "Smart Dual View 3D glasses found. Do you want to use this device? Yes/No" pop-up window appears. If you select **Yes**, a connection is established.

##### Turning On/Off

If you press the Power/Pairing button briefly, the glasses are turned on and the green LED is turned on for 3 seconds. If you press the Power/Pairing button briefly again, the glasses are turned off and the red LED is turned on for 3 seconds.

##### Operating range



Recommended operating distance

Recommended operating distance	2~6m
Recommended pairing distance	Less than 50cm

- Ensure your Samsung TV and Smart Dual View 3D Glasses are no farther than 50 cm (19.5 in) apart from each other while pairing is in progress.
- The working distance depends on obstacles (a person, metal, walls, etc.) or electromagnetic waves.
- Even if you turned the glasses on, the glasses are automatically turned off if the 3D or Smart Dual View mode of the TV is turned off.
- If the glasses do not work when the TV is in 3D or Smart Dual View mode, press the Power button on the glasses briefly again.
- This product is rechargeable. It may not operate due to the dead battery when you attempt to use it for the first time. In this case, charge the battery.

##### Initials pairing

1. Turn on the TV and wait until the TV is fully on.
2. Press the pairing button on the Smart Dual View 3D Glasses shortly. The Smart Dual View 3D Glasses will power on and pairing will start.
3. On the screen of the ES9500 TV, the "Smart Dual View 3D glasses found. Do you want to use this device? Yes/No" pop-up window appears. If you select **Yes**, a connection is established.
4. Enjoy 3D or Smart Dual View videos after configuring the 3D or Smart Dual View function settings on the TV.
  - If the pairing fails, the Smart Dual View 3D Glasses will power off.
  - If the first attempt to pair fails, turn the TV off and on again, and then go to Step 2.
  - **If pairing is in progress:** The LED will blink green and red alternately for 2 seconds.

##### How to pair again

Press the pairing button on the Smart Dual View 3D Glasses for more than 2 seconds.

##### <Pairing is needed again in the following occasions>

- Pairing may be needed again after you have had your ES9500 TV repaired.
- The pairing operation is required when you purchase and use another ES9500 TV released in 2012.

#### Using the earphones

##### Pulling the earphones out

Gently hold the earphones and remove the cable along the groove inside the glasses.

##### Placing the earphones back

Insert the earphones into the corresponding holes in the glasses and insert the cable into the groove.

- ✎ **For information about how to use the earphones, refer to the back cover of this user manual.**

#### Switching the screen

To switch the screen while viewing in Smart Dual View mode, press the Switch Screen button on the front of the LED once. When screen A is switched to screen B, the LED blinks green once and when the screen B is switched to screen A, the LED blinks green twice.

- ✎ At the moment when the screen is switched, you will notice flickering through the glasses.

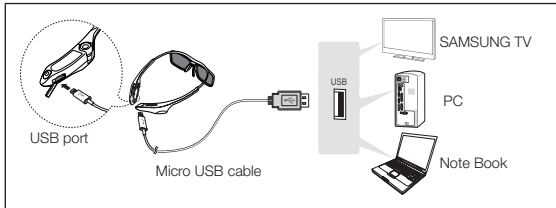
## Controlling the volume

If you press the + volume button on the Smart Dual View 3D Glasses briefly, the volume is turned up and if you press the - volume button briefly, the volume is turned down. If you press and hold one of the volume buttons, the volume is turned up to the maximum or down to the minimum.

## Charging the battery

If the red LED blinks every 2 seconds or you periodically hear a “beep~beep~” sound while using the earphones, recharge the battery by connecting the USB cable.

The orange LED will blink every second when battery charging is in progress. The green LED will blink every 2 seconds when the charging is finished. (It takes about 2 hours to fully charge a discharged battery.)



## Caution

### Viewing guidelines

- When viewing a 3D or Smart Dual View videos under a fluorescent lamp (50 Hz – 60 Hz) or 3-wavelength lamp, you may notice a small amount of screen flickering.
  - ※ If so, dim the light or turn the lamp off.
- Switching the input mode while watching a 3D or Smart Dual View videos may disable the 3D or Smart Dual View function on the TV. As a result, the Smart Dual View 3D Glasses may not function and the videos may not be displayed properly.
- Ensure you are within the recommended operating distance when you view a 3D or Smart Dual View video.
  - ※ If you move the Smart Dual View 3D Glasses outside of their recommended operating distance, the signal from the TV will be disconnected, and the Smart Dual View 3D Glasses will be automatically turned off. When this happens, the red LED will turn on for 3 seconds.
- The vividness of the image may appear degraded if you view 3D or Smart Dual View videos in a place that is exposed to direct sunlight or illumination.
- If you lie on your side while watching TV with Smart Dual View 3D Glasses, the videos may look darker or may not be visible.
- The 3D effect may be experienced differently depending on the viewer. You may not notice the 3D effect at all if you have a prescription for one eye that is very different from the other eye.
- If a lens or any part of the Smart Dual View 3D Glasses is defective or damaged, the glasses cannot be repaired and should be exchanged. Broken Smart Dual View 3D Glasses can be exchanged for a new pair free of charge within the warranty period. Note that damage caused by the fault of the user is not covered by the warranty.
- The Smart Dual View 3D Glasses may not work properly when the devices that use 2.4 or 5 GHz bands, such as wireless routers or microwave ovens, are in operation nearby. Keep such devices away from the glasses for their normal operation.
- The Smart Dual View 3D Glasses may malfunction if there is any electric field or metallic object such as a steel plate nearby. Keep metallic materials and the devices that generate electric fields away from the glasses for their normal operation.

## Caution

### IMPORTANT HEALTH AND SAFETY INFORMATION FOR 3D OR SMART DUAL VIEW VIDEOS. READ THE FOLLOWING CAUTIONS BEFORE YOU OR YOUR CHILD USE THE 3D FUNCTION.

- If the battery is not used for an extended period of time, the battery may not be charged; therefore, please recharge the battery periodically.
- A responsible adult should frequently check on children who are using the 3D function. If your child shows any symptom such as eye fatigue, headache, dizziness, or nausea, stop the child from watching 3D or Smart Dual View videos immediately to rest.
- Do not use the Smart Dual View 3D Glasses for other purposes such as general eyeglasses, sunglasses, protective goggles, etc.
- While watching 3D or Smart Dual View videos, you may experience eye strain, headache, dizziness and nausea. If eye fatigue occurs, stop viewing 3D or Smart Dual View videos immediately, take off the Smart Dual View 3D Glasses, and rest.
- Viewing 3D or Smart Dual View videos for an extended period of time may cause eye fatigue. If eye fatigue occurs, stop viewing 3D or Smart Dual View videos immediately, take off the Smart Dual View 3D Glasses, and rest.
- Do not use the 3D or Smart Dual View function or the Smart Dual View 3D Glasses while walking or moving around. Using the function or Smart Dual View 3D Glasses while moving around may result in injury due to running into objects, tripping and/or falling.
- Note that the temples on your 3D glasses are not foldable. Trying to fold the temples by force may damage the glasses.
- Take care not to drop the Smart Dual View 3D Glasses in particular when playing games and you are moving fast, as they may break.

## SAFETY PRECAUTIONS

The following safety instructions are to ensure your personal safety and prevent property damage. Please read them to ensure the proper use of the product.

- Listening with the earphones at a high volume for an extended period of time may harm your hearing.
  - ※ If you are exposed to sound over 85 dB for an extended period of time, it may harm your hearing and the louder the sound, the more your hearing may be damaged. (The approximate sound level of an average conversation is between 50dB ~60dB and road noise is 80dB.)
  - ※ When you use earphones, adjust the volume to an adequate level. (In general, an adequate volume level is 2/3 or less of the maximum volume.)
  - ※ If you listen with the earphones at a high volume while walking or driving, it may distract you from surrounding events and result in an accident.
- Do not place the product in a location exposed to direct sunlight, heat, fire or water. This may result in a product malfunction or fire.
- Do not apply force to the lenses of the Smart Dual View 3D Glasses. Do not drop or bend the product. This may result in a product malfunction.
- Keep components of the Smart Dual View 3D Glasses out of reach of children, and especially ensure children do not swallow one of the components. If your child swallowed a component, consult your doctor immediately.
- When cleaning the product, do not spray water or cleaner directly onto the surface of the product. Spraying water or cleaner directly onto the glasses may result in fire or electric shock, damage to the product's surface, or cause the indicator labels on the product's surface to come loose.
- Do not use chemicals containing alcohol, solvents, or surfactants, or chemicals such as wax, benzene, thinner, mosquito repellent, lubricant or cleaners. These may cause a discoloration of or cracks in the product surface and cause the indicator labels on the product's surface to come loose.
- Since the product surface and lens are easily scratched, make sure to use a clean soft cloth (the cleaning cloth supplied with the product, a cloth consisting of superfine fibers or cotton flannel) when cleaning to avoid scratching either the surface or the lens. As the product may become scratched if there are any foreign items on the cloth, make sure to shake off any dust before using it.

- Do not disassemble, or attempt to repair or modify your Smart Dual View 3D Glasses by yourself.
- Be careful not to let the temple ends of the Smart Dual View 3D Glasses harm your eye.
- Do not sleep with the Smart Dual View 3D Glasses on. The arms on the glasses may become broken.
- Make sure to only use Smart Dual View 3D Glasses authorized and supplied by Samsung Electronics.
- Use your hands when wearing or take off the Smart Dual View 3D Glasses.
- It is not possible to replace the rechargeable batteries of Smart Dual View 3D Glasses. Do not disassemble.

## Troubleshooting

If you encounter...	Try this...
<b>My Smart Dual View 3D Glasses do not work.</b>	<ul style="list-style-type: none"> <li>The Smart Dual View 3D Glasses should be close to the TV. Move the Smart Dual View 3D Glasses to within 6m (19.5 ft) of the TV.</li> <li>Try the pairing again in order to check if it is completed.</li> <li>Check the 3D or Smart Dual View function settings on the TV.</li> <li>Press the Power button briefly again.</li> </ul>
<b>There is no sound.</b>	<ul style="list-style-type: none"> <li>Press the + volume button of the glasses to turn up the volume.</li> <li>Try the pairing operation again and check if pairing works.</li> <li>The battery is low. Charge the battery.</li> </ul>
<b>The LED keeps blinking.</b>	<ul style="list-style-type: none"> <li>The battery is low. Charge the battery.</li> </ul>

## Specifications (Model no.: SSG-5900CR)

Optics	Shutters	Liquid crystal	Transmittance	35%
	Recommended operating distance	2~6m	Field rate	120Hz
Weight	SSG-5900CR	41.0g		
Power	Glasses	Built-in 3.7V Lithium polymer battery		
Power consumption	Glasses	When viewing the screen only: 1mA, When listening to sound through the earphones: 37mA		
	Battery	Type	110mAh, 3.7V	
		Operating time	Viewing 3D: 80 hours, Viewing Smart Dual View: 3 hours	
Operating conditions	Operating temperature	32°F ~ 104°F (0°C ~ 40°C)		
	Custody temperature	-4°F ~ 140°F (-20°C ~ 60°C)		

Product specifications may be changed without notice in order to enhance product performance.

The continuous operating time may differ depending on the wireless communication environment and usage conditions.

## WARRANTY

This Samsung product is warranted for the period of the listed period at the table (Refer to the warranty period table by the country) from the original date of purchase, against defective materials and workmanship. In the event that warranty service is required, you should first return the product to the retailer from whom it was purchased. However, Samsung Authorised Service Centres will comply with this warranty during the Warranty Period. To obtain details, please contact your nearest Authorised Service Centre.

### PROCEDURE FOR MAKING A WARRANTY CLAIM

To make a claim under the warranty, you must contact the Samsung Centre during the Warranty Period to discuss the problems you are having with the product. If a repair or replacement is required, you will be provided with a Warranty Claim Number and address of an Authorised Service Centre.

If you are provided with a Warranty Claim Number, to obtain a repair or replacement of the product, you must send the product to the Authorised Service Centre advised together with:

- a copy of your completed warranty card or, if you have already provided this to Samsung, your name, address and contact telephone number;
  - your original receipt, invoice or sales slip for the purchase of the product as new;
  - your Warranty Claim Number.
- Samsung will then repair or replace the product and return it to you using the contact details provided.

### WARRANTY CONDITIONS

- The warranty is only valid if the above procedure for making a warranty claim is followed.
- Samsung's obligations are limited to the repair or, at its discretion, replacement of the product or the defective part.
- Warranty repairs must be carried out by Samsung Authorised Service Centres. No re-imburement will be made for repairs carried out by service centres or dealers that are not authorised by Samsung and any such repair work and damage to the products caused by such repair work will not be covered by this warranty.
- This product is not considered to be defective in materials nor workmanship by reason that it requires adaptation in order to conform to national or local technical or safety standards in force in any country other than the one for which the product was originally designed and manufactured. This warranty will not cover, and no reimbursement will be made for such adaptation, nor any damage which may result.
- The warranty does not apply to any product that has been damaged or rendered defective as a result of any of the following excluded reasons, namely:
  - as a result of accident, misuse, or abuse;
  - through the failure to use this product for its normal purposes;
  - by the use of parts not manufactured or sold by Samsung;
  - by modification without the written permission of Samsung;
  - by damage resulting from transit, neglect, power surge or failure;
  - by damage resulting from lightning, water, fire, or acts of God;
  - as a result of normal wear and tear; or
  - differences in broadcasting methods or product standards between countries.
- This warranty is valid for any person who legally acquired possession of the product during the warranty period.
- NOTHING IN THESE WARRANTY CONDITIONS SHALL EXCLUDE OR LIMIT SAMSUNG'S LIABILITY FOR DEATH OR PERSONAL INJURY CAUSED BY THE PROVEN NEGLIGENCE OF SAMSUNG, UNLESS SUCH LIMITATION OR EXCLUSION IS PERMITTED BY APPLICABLE LAW.
- WITH THE EXCEPTION OF SAMSUNG'S LIABILITY WHICH CANNOT BE EXCLUDED OR LIMITED BY LAW, SAMSUNG SHALL NOT BE LIABLE FOR: ANY INDIRECT, INCIDENTAL, SPECIAL OR CONSEQUENTIAL DAMAGES LOSSES OR EXPENSES; OR LOST PROFITS; OR LOSS OF USE OR LOSS OF DATA; OR DAMAGE TO GOODWILL, REPUTATION OR LOST BUSINESS, ARISING DIRECTLY OR INDIRECTLY, FROM THE PURCHASE, USE OR SALE OF THE PRODUCT, WHETHER OR NOT SAMSUNG WAS ADVISED OR AWARE OF THE POSSIBILITY OF SUCH DAMAGES, LOSSES OR EXPENSES.
- WITH THE EXCEPTION OF SAMSUNG'S LIABILITY WHICH CANNOT BE EXCLUDED OR LIMITED BY LAW, SAMSUNG'S LIABILITY UNDER OR IN CONNECTION WITH THIS WARRANTY OR THE PURCHASE, USE OR SALE OF THE PRODUCT SHALL NOT EXCEED THE PRICE PAID FOR THE PRODUCT AS NEW.
- UNLESS PROVIDED FOR IN THIS WARRANTY, ALL CONDITIONS, WARRANTIES AND TERMS IMPLIED BY STATUTE OR OTHERWISE ARE HEREBY EXCLUDED TO THE MAXIMUM EXTENT PERMISSIBLE BY LAW.
- The above warranty conditions do not affect your statutory rights as a consumer or otherwise.

## Notice

### FCC Statement

This equipment has been tested and found to comply with the limits for a Class B digital device, pursuant to Part 15 of the FCC Rules.

These limits are designed to provide reasonable protection against harmful interference in a residential installation. This equipment generates, uses and can radiate radio frequency energy and, if not installed and used in accordance with the instructions, may cause harmful interference to radio communications. However, there is no guarantee that interference will not occur in a particular installation. If this equipment does cause harmful interference to radio or television reception, which can be determined by turning the equipment off and on, the user is encouraged to try to correct the interference by one of the following measures:

- Reorient or relocate the receiving antenna.
- Increase the separation between the equipment and receiver.
- Connect the equipment into an outlet on a circuit different from that to which the receiver is connected.
- Consult the dealer or an experienced radio/TV technician for help.

### FCC Caution:

Any changes or modifications not expressly approved by the party responsible for compliance could void the user's authority to operate this equipment.

This device complies with Part 15 of the FCC Rules. Operation is subject to the following two conditions:

- (1) This device may not cause harmful interference, and
- (2) this device must accept any interference received, including interference that may cause undesired operation.

This device and its antenna(s) must not be co-located or operation in conjunction with any other antenna or transmitter.

This device is going to be operated in 5.15~5.25GHz frequency range, it is restricted in indoor environment only.

## IMPORTANT NOTE:

### FCC Radiation Exposure Statement:

This equipment complies with FCC radiation exposure limits set forth for an uncontrolled environment.

Any changes or modifications not expressly approved by the manufacturer could void the user's authority to operate this equipment.

### IC Statement

This device complies with Industry Canada licence-exempt RSS standard(s). Operation is subject to the following two conditions: (1) this device may not cause interference, and (2) this device must accept any interference, including interference that may cause undesired operation of the device.

Le présent appareil est conforme aux CNR d'Industrie Canada applicables aux appareils radio exempts de licence.

L'exploitation est

autorisée aux deux conditions suivantes : (1) l'appareil ne doit pas produire de brouillage, et (2)

l'utilisateur de l'appareil doit accepter tout brouillage radioélectrique subi, même si le brouillage est susceptible d'en compromettre le fonctionnement.

This device and its antenna(s) must not be co-located or operation in conjunction with any other antenna or transmitter.

The device could automatically discontinue transmission in case of absence of information to transmit, or operational failure. Note that this is not intended to prohibit transmission of control or signaling information or the use of repetitive codes where required by the technology.

The device for the band 5150-5250 MHz is only for indoor usage to reduce potential for harmful interference to co-channel mobile satellite systems.

"Les dispositifs fonctionnant dans la bande 5 150-5 250 MHz sont réservés uniquement pour une utilisation à l'intérieur afin de réduire les risques de brouillage préjudiciable aux systèmes de satellites mobiles utilisant les mêmes canaux"

## IMPORTANT NOTE:

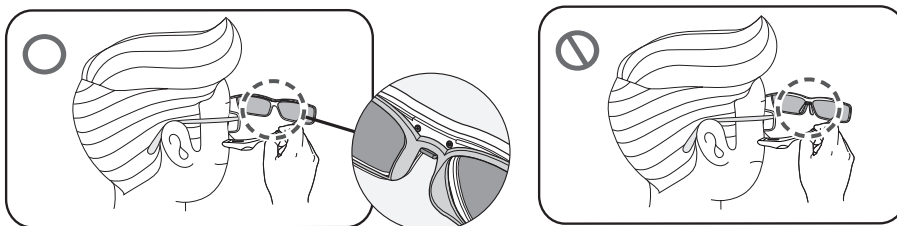
### IC Radiation Exposure Statement:

This equipment complies with IC RSS-102 radiation exposure limits set forth for an uncontrolled environment.

## ◆ SSG-5900CR

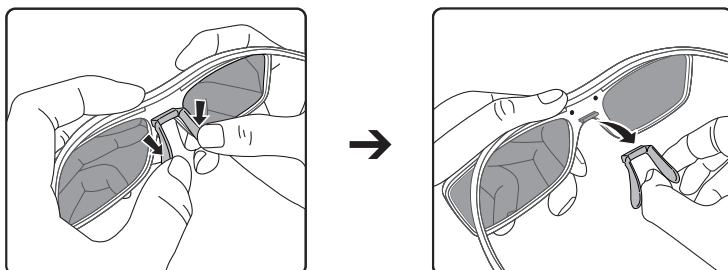
- To wear the Smart Dual View 3D Glasses over eyeglasses

※ To wear the Smart Dual View 3D Glasses over eyeglasses, detach the nose pad from the Smart Dual View 3D Glasses.

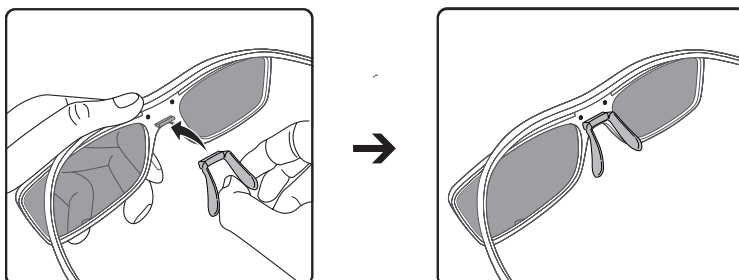


- Detaching the nose pad

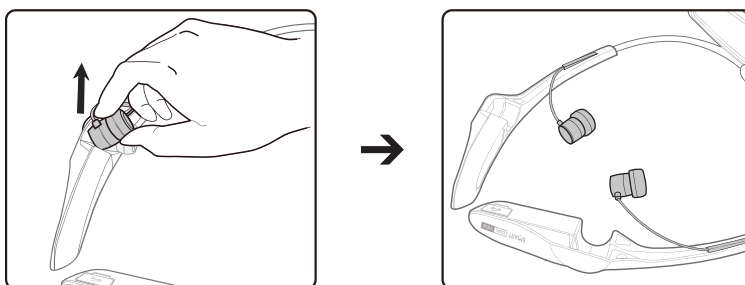
※ Pressed with the thumbs under the nose pad can easily take it off.



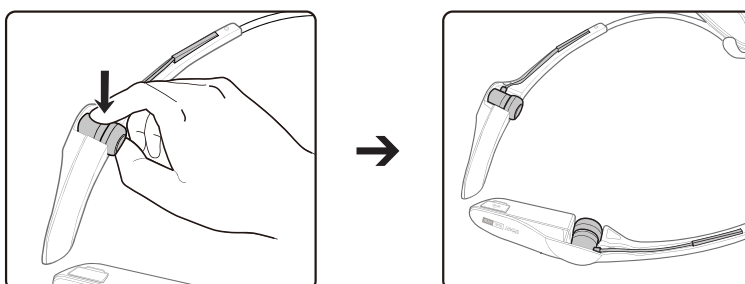
- Attaching the nose pad



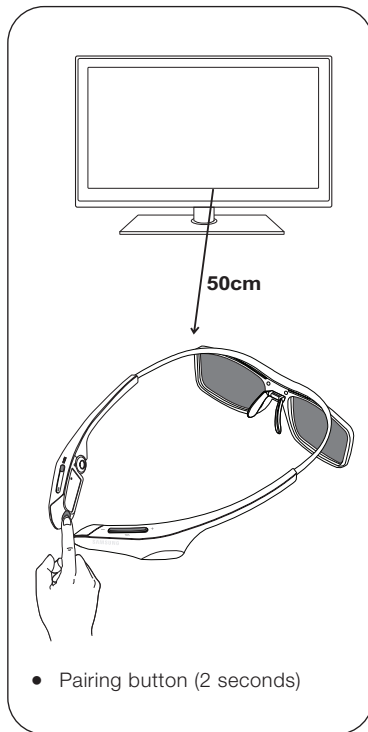
- Pulling the earphones out



- Placing the earphones back



- To perform pairing



***This page is intentionally  
left blank.***

