



User's Guide

MWiMAX USB dongle

mWiMAX Connection Manager

SWC-U200

Draft
2009.03.02

Contents

1. INSTALL/UNINSTALL MWIMAX U200 CONNECTION PROGRAM	4
1.1. INSTALL mWiMAX U200 CONNECTION PROGRAM	4
1.1.1. Installation Checkup	7
1.2. UNINSTALL mWiMAX CONNECTION PROGRAM	8
1.2.1. Uninstall on Start menu	8
1.2.2. Uninstall on [Control Panel]	9
2. MWIMAX CONNECTION MANAGER.....	10
2.1. mWiMAX CONNECTION MANAGER OVERVIEW	10
2.1.1 Product Mix	10
2.1.2. mWiMAX Connection Manager User Interface	11
2.2. TO USE mWiMAX CONNECTION MANAGER	11
2.2.1. Run mWiMAX Connection Manager	11
2.2.1.1 Run on [Start] Menu	11
2.2.1.2. Run on Desktop	12
2.2.2. Screen Configuration	12
2.2.2.1. Main Screen	12
2.2.2.2. Settings Screen	13
2.2.2.3. Tray Screen	14
2.2.3. Connect to mWiMAX.....	15
2.2.4. Disconnect mWiMAX	17
2.2.5. Show Settings	18
2.2.6. Exit	18
2.2.7. Use Tray.....	19
2.2.8. Tray Icon Description	19
3. HEALTH AND SAFETY INFORMATION	20

Revision History

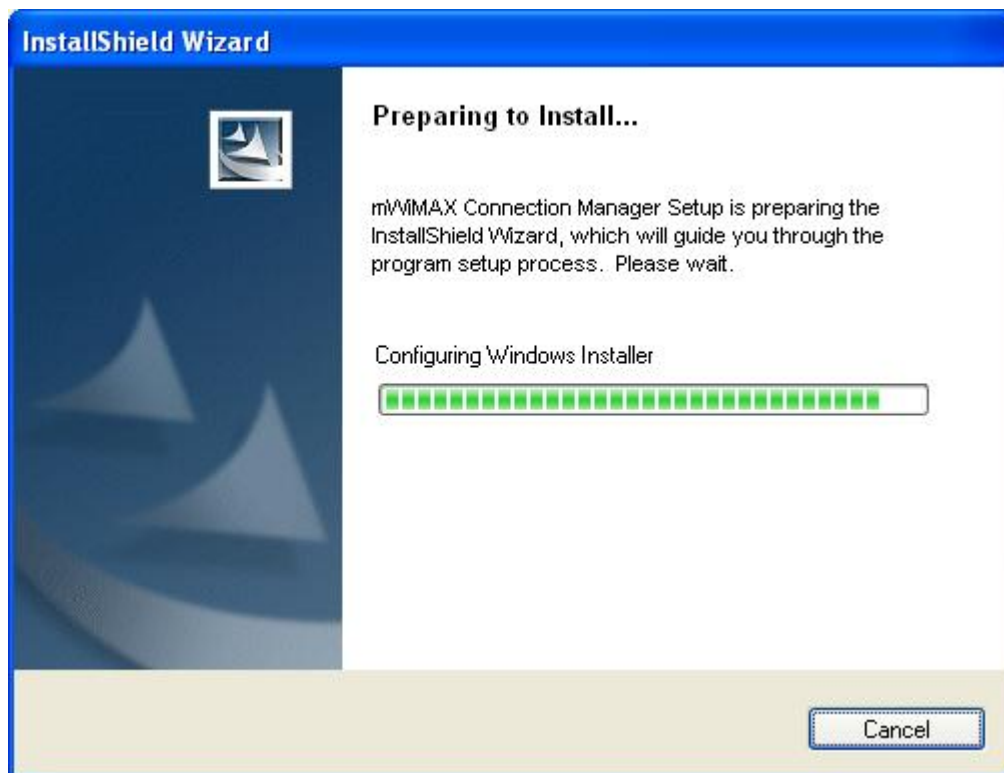
Version	Date	Author	Description
1.0	2007.12.28	Lee Myung-Hwan, Park Sea-hoon,	Initial documentation (SWC-U100)
1.1	2008.09.29	Il Kwon Kim	Revised into SWC-U200
1.2	2009.03.02	Il Kwon Kim	Added SAR waring phrase.

1. Install/Uninstall mWiMAX U200 Connection Program

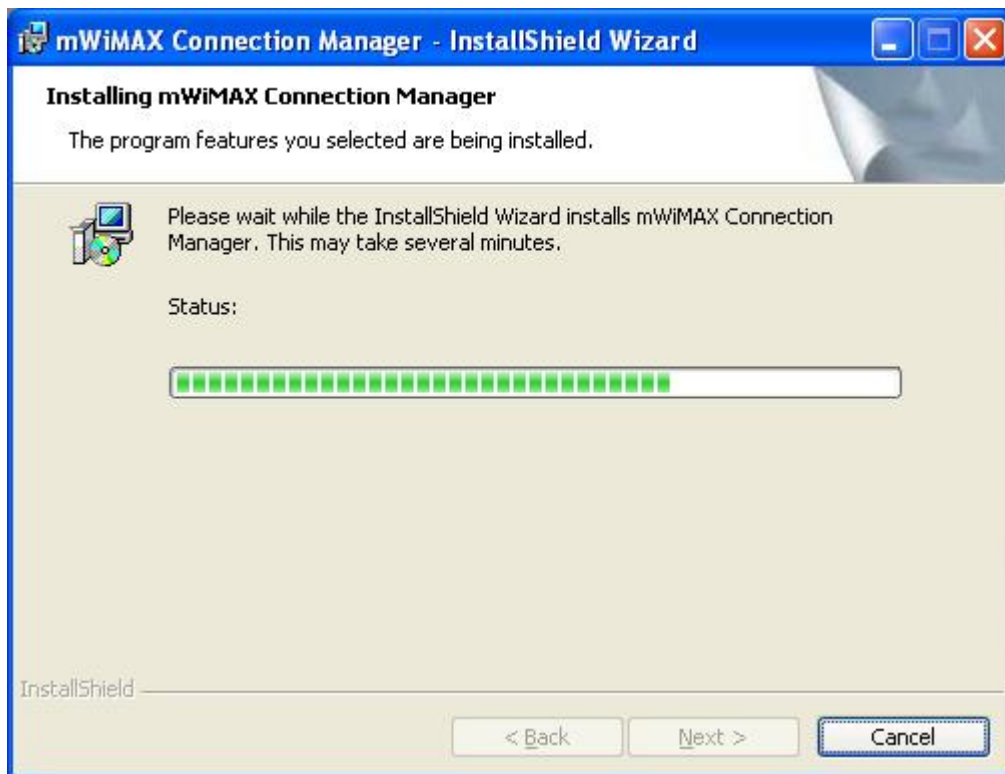
1.1. Install mWiMAX U200 Connection Program

* Before installing SWC-U200 connection Program, insert USB dongle into USB port on your laptop.

If new hardware detection pop-up window is appeared, click "Cancel" button.



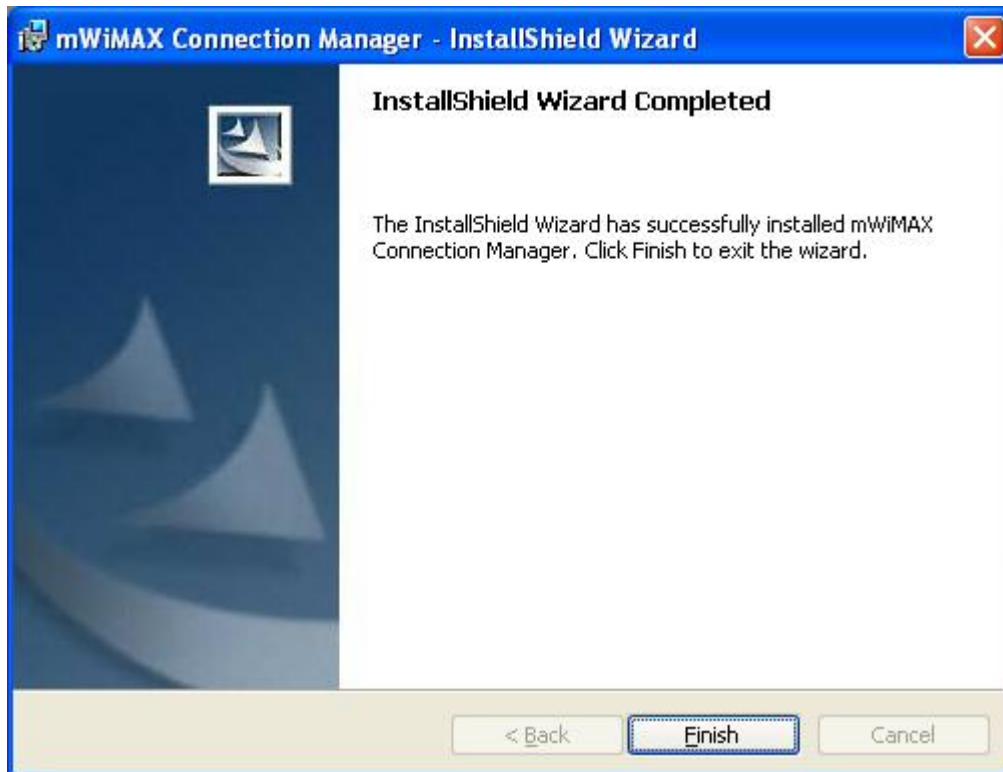
- Click [Next] to start installation.
- Please click [Install].



- mWiMAX PCMCIA device driver and mWiMAX virtual serial port driver are installed first. After this, mWiMAX Connection Manager is installed.

* Driver installation process might cause some screen blinks.

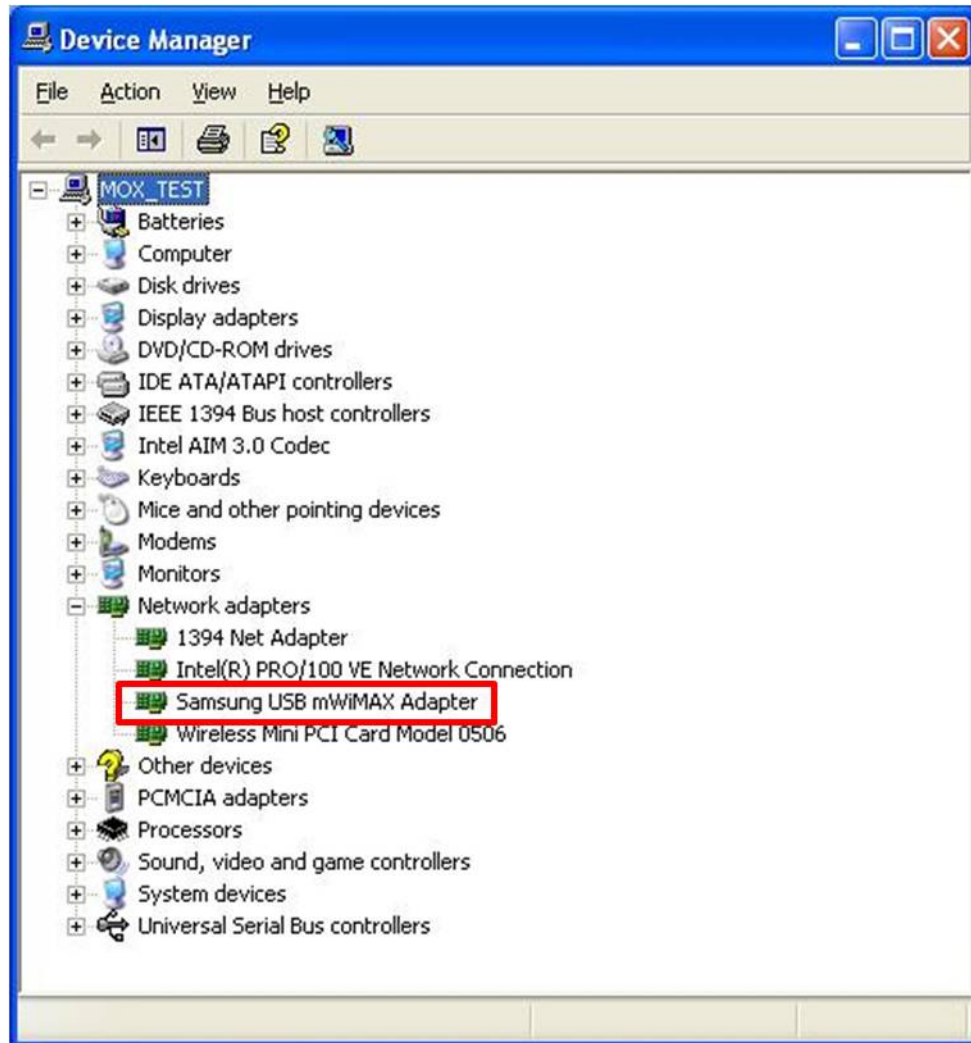
- Click [Finish] to end installation.



1.1.1. Installation Checkup

Select [Start] - [Control Panel] - [System] - [Hardware] - [Device Manager].

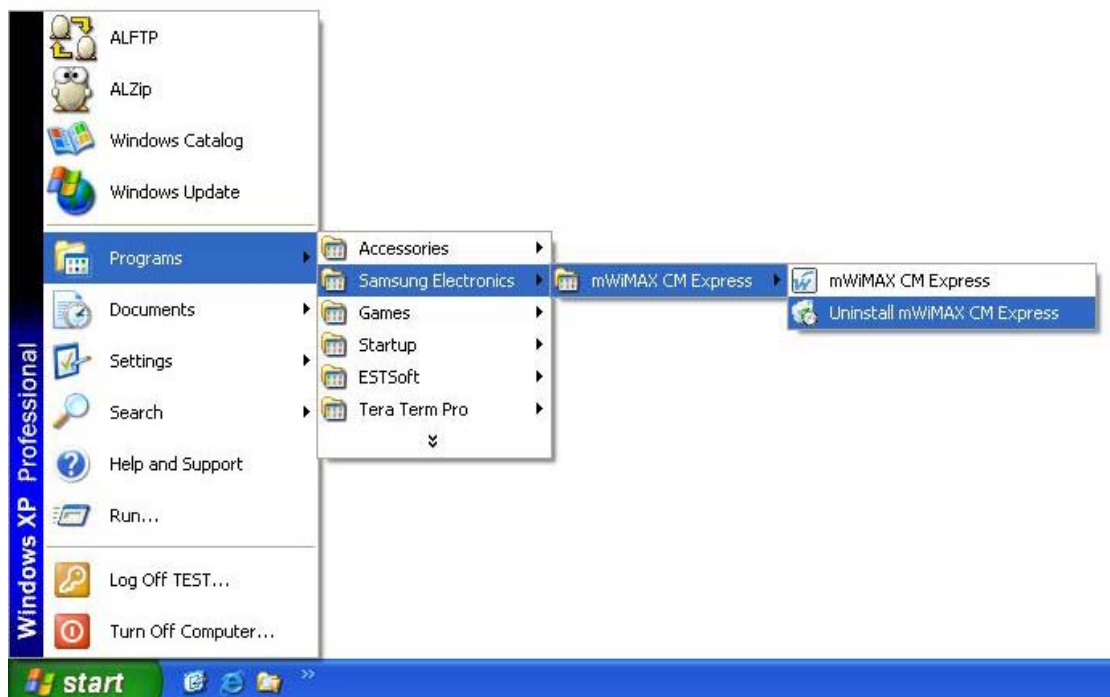
When mWiMAX Connection Program is normally installed, Device Manager is shown as the following picture.



1.2. Uninstall mWiMAX Connection Program

1.2.1. Uninstall on Start menu

Click [Start] menu, then select [Program] - [SAMSUNG ELECTRONICS] - [mWiMAX CM Express] → [Uninstall mWiMAX CM Express].



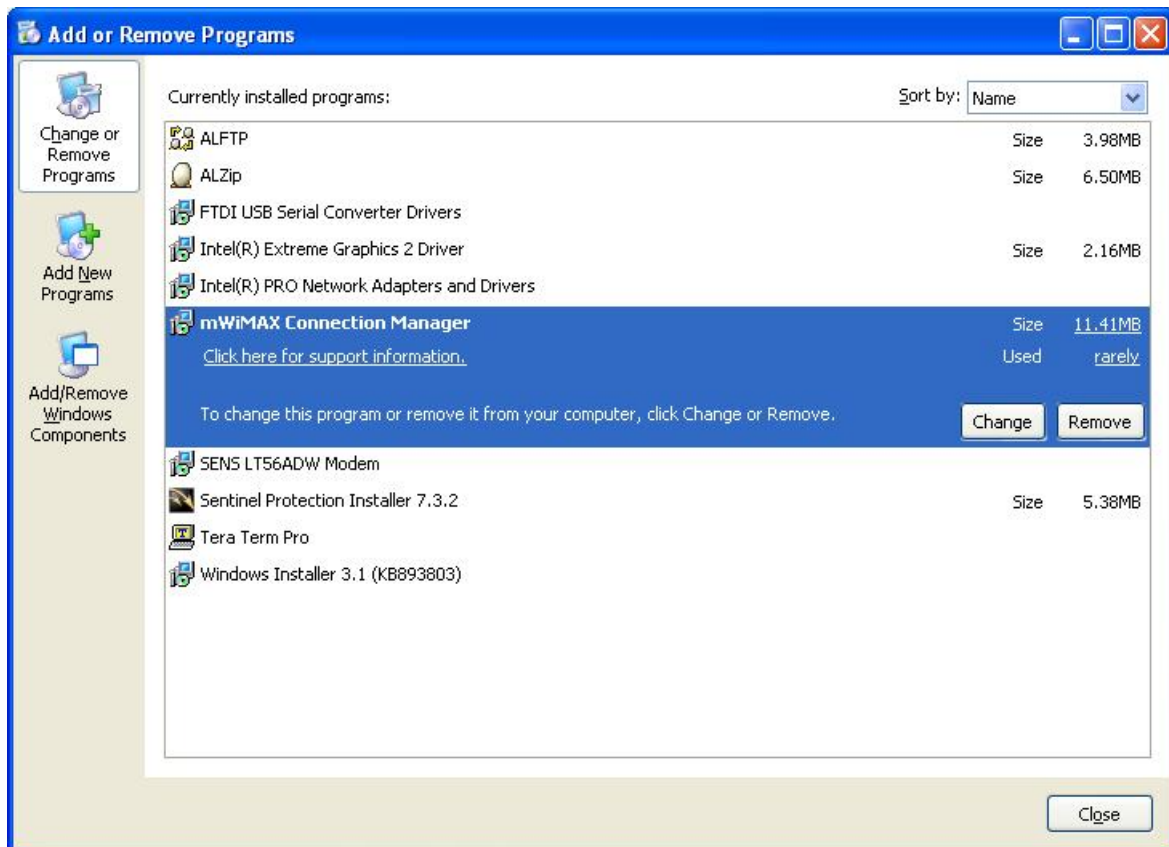
1.2.2. Uninstall on [Control Panel]

Select [Start] - [Control Panel].

On [Control Panel] menu, select [Add/Delete Program].

On [Add/Delete Program], select [mWiMAX Connection Manager] and hit [Delete] button on the right, then a message is displayed asking if you want to delete the program.

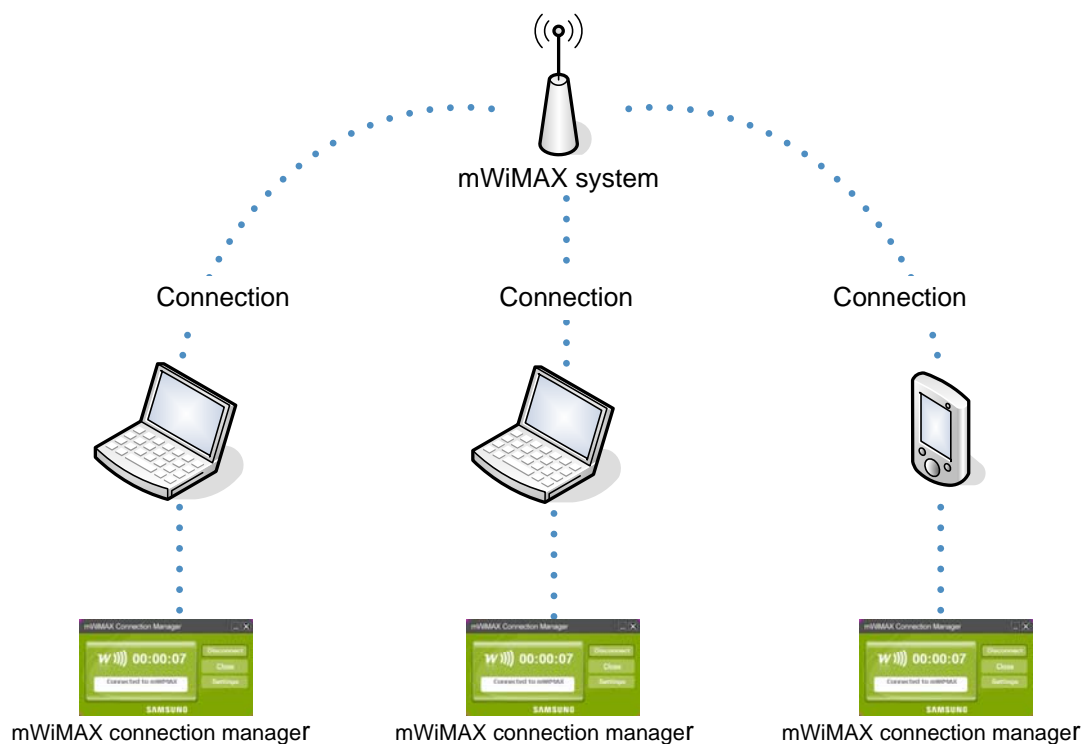
By selecting [Yes], the program is deleted.



2. mWiMAX Connection Manager

2.1. mWiMAX Connection Manager Overview

mWiMAX Connection Manager is Windows OS-based application supporting mWiMAX connection and features mWiMAX system connection and disconnection and other mWiMAX-related functions.



2.1.1 Product Mix

- mWiMAX(Mobile WiMAX) USB dongle
- Easy Installation Guide

2.1.2. mWiMAX Connection Manager User Interface

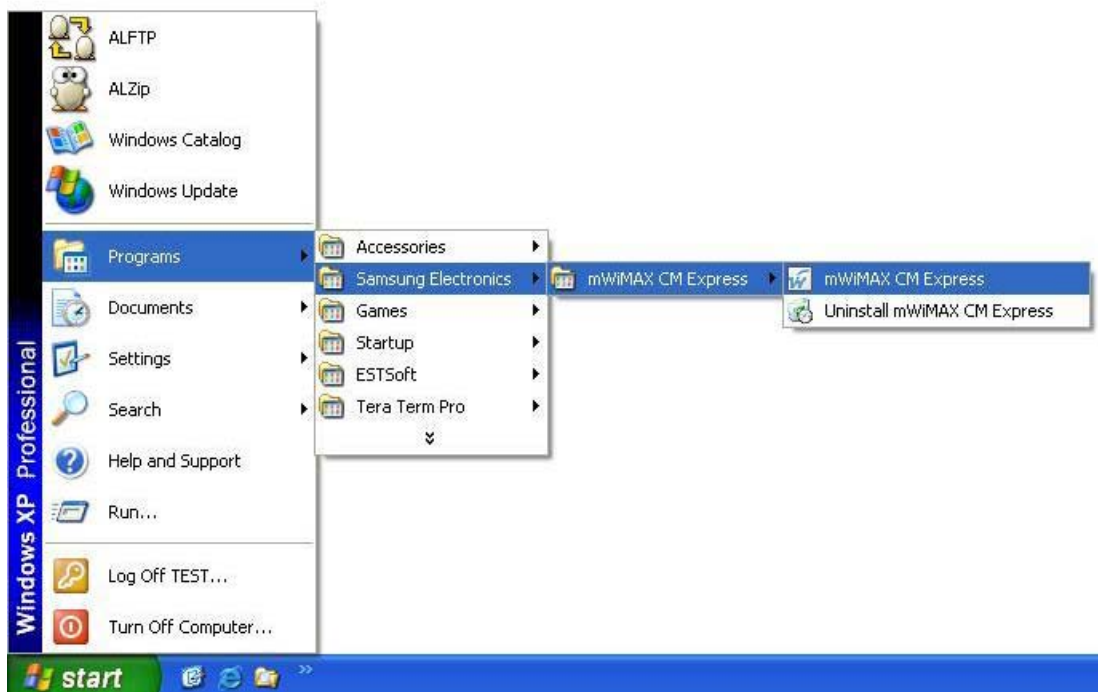
OS	Microsoft Windows XP, Vista
CPU	Intel Pentium 1.7 GHz or above recommended
Memory	512MB or above recommended

2.2. To Use mWiMAX Connection Manager

2.2.1. Run mWiMAX Connection Manager

2.2.1.1 Run on [Start] Menu

Click [Start] menu, then select [Program] → [SAMSUNG ELECTRONICS] → [mWiMAX CM Express] → [mWiMAX CM Express].



2.2.1.2. Run on Desktop

Execute [mWiMAX CM] icon on Desktop.



SWC-U200 mWiMAX CM

2.2.2. Screen Configuration

2.2.2.1. Main Screen

Main screen appears when mWiMAX Connection Manager is run.

- In the upper left is an antenna showing receive sensitivity and to its right is a message box informing connection status.

At the right side of the screen there are [Connect], [Close] and [Settings] button for mWiMAX connection.




2.2.2.2. Settings Screen

The following screen is displayed by clicking [Settings] button and it shows
- [Configuration].



The screenshot shows the 'mWiMAX Connection Manager Settings' dialog box with the 'Configuration' tab selected. The dialog has a title bar with a close button. Below the title bar are four tabs: 'Configuration', 'Connect Info.', 'Net Info.', and 'About mWiMAX CM'. The 'Configuration' tab contains two sections. The first section, labeled 'Connect', has two radio buttons: 'Enable Auto Connect' (unselected) and 'Disable Auto Connect' (selected). The second section, labeled 'Alert', has a checkbox 'Alert mWiMAX Zone In / Out' (unchecked) and a 'Set Alert' button. At the bottom of the dialog are the 'SAMSUNG | mWiMAX' logo and two buttons: 'Save' and 'Cancel'.

- [Connection Info]



The screenshot shows the 'mWiMAX Connection Manager Settings' dialog box with the 'Connection Info.' tab selected. The dialog has the same title bar and tabs as the previous screen. The 'Connection Info.' tab displays connection details in a table format. The table has two columns: 'Status' and 'Connected At'. The 'Status' row shows 'mWiMAX Connection Succeeds'. The 'Connected At' row shows '08/07/2007 Tue AM 08:18:12'. Below this is a 'Duration' row showing '00:00:13'. At the bottom of the table are two columns: 'Send' and 'Receive'. The 'Send' row shows '91' and the 'Receive' row shows '15'. At the bottom of the dialog are the 'SAMSUNG | mWiMAX' logo and an 'OK' button.

Status	mWiMAX Connection Succeeds	
Connected At	08/07/2007 Tue AM 08:18:12	
Duration	00:00:13	
	Send	Receive
Data	91	15

- [Network Info]



- [About mWiMAX CM].



2.2.2.3. Tray Screen

When you click [Close] or [Minimize] button in the top-right corner on Main Screen, Main screen disappears and the program runs as a Tray icon.



2.2.3. Connect to mWiMAX

On the Main screen, press [Connect] button.



Connecting to mWiMAX' message is displayed as in the following picture.



* For maximum performance, please upright antenna from USB dongle.

- Connection Success

If the connection to mWiMAX succeeds, the following screen is displayed.



- Connection Failure

If the connection to mWiMAX fails, the following screen is displayed.



2.2.4. Disconnect mWiMAX

When you press [Disconnect] button on Main screen, connection is cut off and the status changes to 'waiting for connection'.



2.2.5. Show Settings

Select [Settings] on Main screen.

- Then [Configuration], [Connection Info], [Network Info], [About mWiMAX CM] tabs are appeared same as in Settings Screen on page 15.



2.2.6. Exit

Right-click on Tray screen to see a pop-up menu.

Select [Exit].



2.2.7. Use Tray

Switch Tray screen to Main screen

Right-click on Tray screen to see a pop-up menu. Select [mWiMAX View].



2.2.8. Tray Icon Description

	Signal strength is low	Standby
	Signal strength is weak	
	Signal strength is good	
	Signal strength is very good	
	Signal strength is best	
	Signal strength is low	Online
	Signal strength is weak	
	Signal strength is good	
	Signal strength is very good	
	Signal strength is best	
	No service area	

3. Health and safety information

Exposure to Radio Frequency (RF) Signals

Certification Information (SAR)

Your SWC-U200 dongle is a radio transmitter and receiver. It is designed and manufactured not to exceed the exposure limits for radio frequency (RF) energy set by the Federal Communications Commission (FCC) of the U.S. government. These FCC exposure limits are derived from the recommendations of two expert organizations, the National Council on Radiation Protection and Measurement (NCRP) and the Institute of Electrical and Electronics Engineers (IEEE). In both cases, the recommendations were developed by scientific and engineering experts drawn from industry, government, and academia after extensive reviews of the scientific literature related to the biological effects of RF energy. The exposure limit set by the FCC for wireless USB dongles employs a unit of measurement known as the Specific Absorption Rate (SAR).

The SAR is a measure of the rate of absorption of RF energy by the human body expressed in units of watts per kilogram (W/ kg). The FCC requires wireless USB dongles to comply with a safety limit of 1.6 watts per kilogram (1.6 W/kg). The FCC exposure limit incorporates a substantial margin of safety to give additional protection to the public and to account for any variations in measurements.

SAR tests are conducted using standard operating positions accepted by the FCC with the wireless USB dongle transmitting at its highest certified power level in all tested frequency bands. Although the SAR is determined at the highest certified power level, the actual SAR level of the wireless USB dongle while operating can be well below the maximum value. This is because the wireless USB dongle is designed to operate at multiple power levels so as to use only the power required to reach the network. In general, the closer you are to a wireless base station antenna, the lower the power output.

Before a new model wireless USB dongle is available for sale to the public, it must be tested and certified to the FCC that it does not exceed the exposure limit established by the FCC. Tests for each model wireless USB dongle are performed in positions and locations (e.g. worn on the body) as required by the FCC.

The highest SAR values for this model wireless USB dongle as reported to the FCC are:



SAR(Body-worn): 1.18 W/Kg.

For body worn operation, the SWC-U200 USB dongle must be 0.5 cm or more from users during operation, to satisfy FCC RF exposure requirements and has been tested and meets the FCC RF exposure limits in laptop configurations with all sides (bottom, top, and sides).

Non-compliance with the above restrictions may result in violation of FCC RF exposure guidelines. SAR information on this and other model wireless USB dongles can be viewed on-line at www.fcc.gov/oet/fccid. [This site uses the wireless USB dongle FCC ID number, A3LSWCU200](#). Once you have the FCC ID number for a particular wireless USB dongle, follow the instructions on the website and it should provide values for typical or maximum SAR for a particular wireless USB dongle. Additional product specific SAR information can also be obtained at www.fcc.gov/cgb/sar.

Restricting Children's access to your Wireless USB dongle

Your wireless USB dongle is not a toy. Children should not be allowed to play with it because they could hurt themselves and others, damage the wireless USB dongle or make calls that increase your wireless USB dongle bill.

Cautions

Changes or modifications made in the radio USB dongle, not expressly approved by Samsung, will void the user's authority to operate the equipment.

Only use approved batteries, antennas and chargers. The use of any unauthorized accessories may be dangerous and void the wireless USB dongle warranty if said accessories cause damage or a defect to the wireless USB dongle.

Although your wireless USB dongle is quite sturdy, it is a complex piece of equipment and can be broken. Avoid dropping, hitting, bending or sitting on it.

Other Important Safety Information

Only qualified personnel should service the wireless USB dongle or install the wireless USB dongle in a vehicle. Faulty installation or service may be dangerous and may invalidate any warranty applicable to the device.

Check regularly that all wireless USB dongle equipment in your vehicle is mounted and operating properly.

Do not store or carry flammable liquids, gases or explosive materials in the same compartment as the wireless USB dongle, its parts or accessories.

For vehicles equipped with an air bag, remember that an air bag inflates with great

force. Do not place objects, including both installed and portable wireless equipment in the area over the air bag or in the air bag deployment area. If wireless equipment is improperly installed and the air bag inflates, serious injury could result.

The use of wireless USB dongle in aircraft is illegal and may be dangerous to the aircraft's operation.

Failure to observe these instructions may lead to the suspension or denial of USB dongle services to the offender, or legal action, or both.