



Modular installation manual

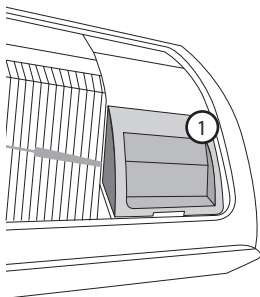


- i. We recommend to keep 20cm distance when installing this module.
- ii. This module should not be installed and operating simultaneously with other radio without additional evaluation or FCC filing.
- iii. The host system should have proper label showing that it "Contains FCC ID : A3LSWL-B70F"



Connecting network

Checking Wi-Fi module installation

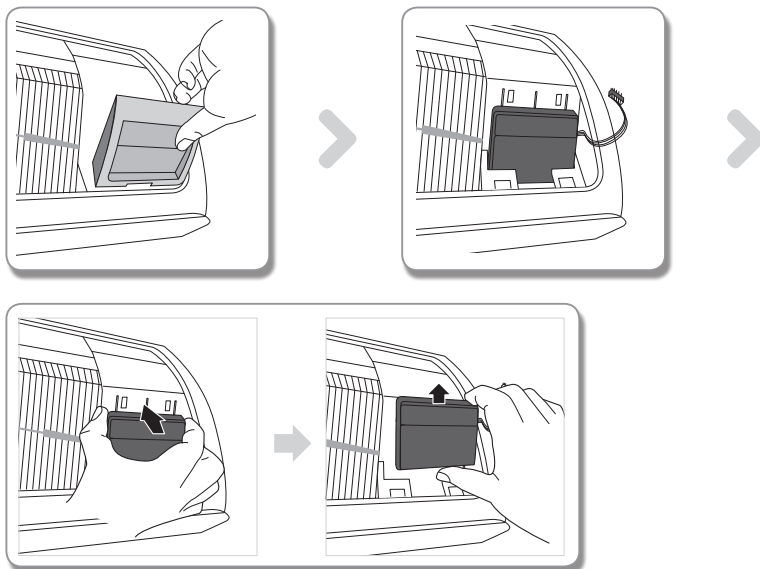


- ▶ Open the filter cover and check the Wi-Fi Module (1) attached on the panel front. The connection status between the Wi-Fi module and the wireless router can be checked by the Wi-Fi module described next page.
- ▶ The Display Wi-Fi LED is ON when the Wi-Fi module is connected to AP & Internet.
- ▶ To replace the Wi-Fi module(Assembling or disassembling), follow the procedure below.



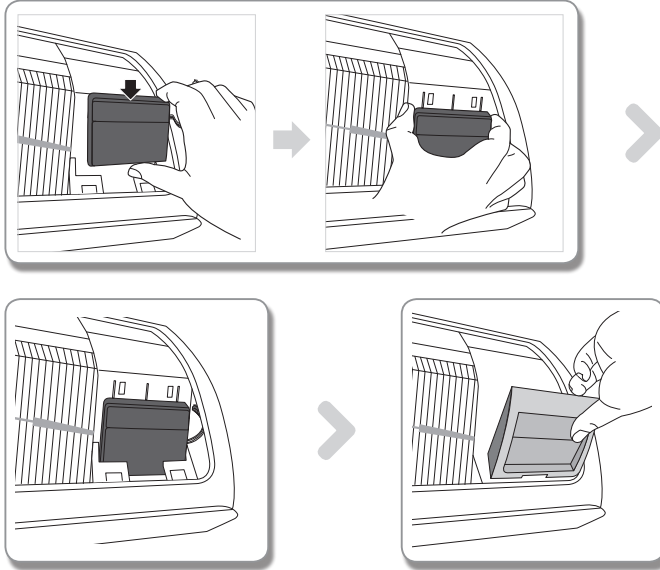
NOTE • When changing the Wi-Fi module, you should check the MAC attached on the module or bottom part of the indoor unit and modify the device information at 'Registering service'.

Disassembling the Wi-Fi module



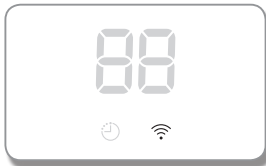
1. Remove the cover of the sub panel.
2. Disconnect the wire of the Wi-Fi module.
3. Release the hook on the top of the Wi-Fi module and push it up to disassemble it.

Assembling the Wi-Fi module



1. Push the Wi-Fi module down into a slot and fix the hook on the top.
2. Connect the wire of the Wi-Fi module.
3. Close the cover of the sub panel.

Checking the connection status on the panel-display



- ▶ Wi-Fi display description
 - 1) Wi-Fi Indicator LED off:
Not connected with AP
Not connected with internet
 - 2) Wi-Fi Indicator LED blinking :
Connected with AP
Not connected with internet
 - 3) Wi-Fi Indicator LED on :
Connected with AP
Connected with internet

This device complies with part 15 of the FCC Rules.
Operation is subject to the following two conditions:
(1) This device may not cause harmful interference, and
(2) This device must accept any interference received,
including interference that may cause undesired operation.

Caution: Any changes or modifications to the equipment not expressly approved by the party responsible for compliance could void user's authority to operate the equipment.