

Introduction

What is WEA302i/303i/303e?

The WEA302i/303i/303e is AP for Samsung WE wireless LAN. It connects the UE that supports wireless LAN such as a smart phone, tablet PC, or notebook to a wired network. The WEA302i/303i/303e supports the following features:

- IEEE 802.11a/b/g/n standard
- Power over Ethernet (PoE) IEEE 802.3af
- WEA302i: 2 x 2 MIMO (Multiple Input Multiple Output)
- WEA303i/303e: 3 x 3 MIMO (Multiple Input Multiple Output)
- Wireless LAN through both 2.4 GHz and 5 GHz ISM bandwidth

Component

After unpacking the WEA302i/303i/303e, check whether all of the following items are included.

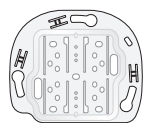


WEA302i/303i

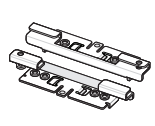


WEA303e

Common merchandise



Ceiling bracket



Two ceiling clips

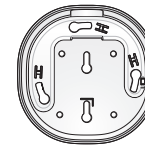


Three M3 x L6 screws (including 1 spare)



Installation Manual

Wall mount bracket installation set (sold separately)



Wall mount bracket



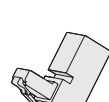
Security torx (T10) screw



Four plastic anchors



M4 x L28 Four screws

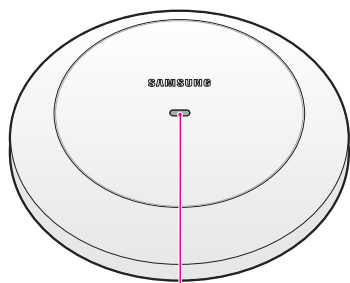


RJ45 gender

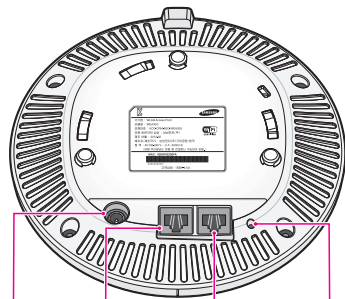


- It is recommended to keep all the packing materials and box.
- The wall mount bracket installation set, power adaptor, and external antenna for WEA303e are sold separately.
- The cable hole guide seat is provided separately.

Name and Function



Status LED



DC input Ethernet port Console port Reset switch



- Dust covers are installed on a power port (DC 12 V/2.0 A) and console port (CONSOLE). Remove the cover before use.

Interface

Interface	Description
Status LED	Displays the status information of WEA302i/303i/303e with LED.
DC input	Used when a power adaptor is used for power supply.
Ethernet port	Supports 1000 BASE-T Gigabit Ethernet and PoE IEEE 802.3af standard.
Console port	Checks the operation status of WEA302i/303i/303e and used for CLI input.
Reset switch	Used to restart the WEA302i/303i/303e.

Status LED

LED	Status	Description
System start status	White On	Initial LED status
	Blue On	Device reset and test in progress
	Red On	Booting failure (Device reset failure)
Provisioning status	Repeated Red, Green, and Off	Connecting APC (network link normal status)
	Blinking green	Connecting CAPWAP link (APC server normal connection status)
Normal operation status	Green On	When there is no connected wireless UE
	Blue On	When there is a connected wireless UE
Upgrade	Blinking blue	Upgrading software
Fault status	Blinking red	Abnormal network link (checking link status after disconnection or re-connection)
	Blinking orange	IP address conflict
	Blinking violet	Dynamic IP Address allocation failure
	Blinking bluish green	Fixed IP check failure
	Repeated Red, Blue, and Off	Wireless interface fault status

Installation

The WEA302i/303i/303e can be installed on a ceiling or wall. Please check whether all the components are included before installation.

Before Installation

Safety Requirements

If the below safety warnings are not properly observed, it may cause a risk. Make sure to be informed for safe use.



- There is an electrical risk with the product. Make sure that the power is turned off during installation. Do not proceed with the installation when there is current leakage. Otherwise, this may cause serious personal injury.
- Wear anti-static gloves or take an appropriate action to prevent ESD during product handling.
- Do not connect a phone line connector to an Ethernet port. This may damage the product.
- This product must be connected to a power supply in compliance with IEEE 802.3af or to a limited power supply in compliance with IEC60950.



- This product must be installed or removed only by appropriately trained service personnel.
- This product is operating in the Safety Extra Low Voltage (SELV) state according to IEC60950.
- All the connected equipment including this product must be installed inside of the same building. For more information, refer to the Environment A of IEEE 802.3af standard.

Installation Instructions

The below instructions must be observed during installation.

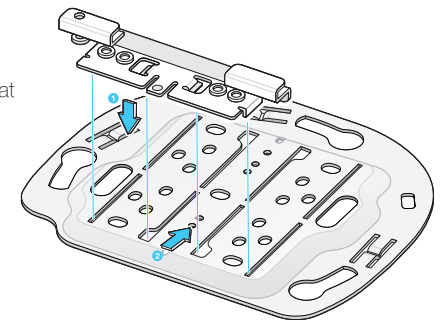
- The system must be easily accessible for product installation, cable connection, or maintenance.
- The PoE LAN cable must be installed always away from an electrical interference source such as power line, fluorescent light, radio, or transmitter.
- The PoE LAN cable must be CAT 5E or higher.
- If it is not easy to use PoE, a power adaptor (sold separately) can be used. The 3-pin (including ground) power consent that supplies 100-240 V AC, 50-60 Hz must be located within 2 m from equipment and the power must be supplied through an independent circuit breaker. It is recommended to use equipment that uses a filter or surge breaker.
- The ambient temperature must be maintained between 0°C and 45°C. The ambient humidity, in absence of air pressure change, must be maintained between 10 % and 90 %.

Installation on a Ceiling

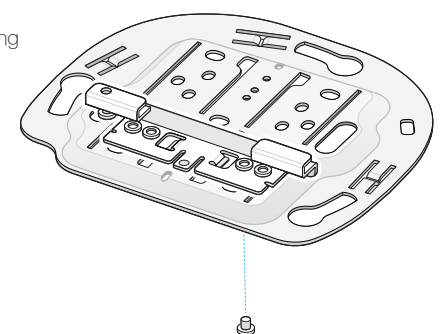


- If the WEA302i/303i/303e is incorrectly installed on the ceiling, the product may drop onto a person or equipment. Therefore, make sure to fix it firmly.

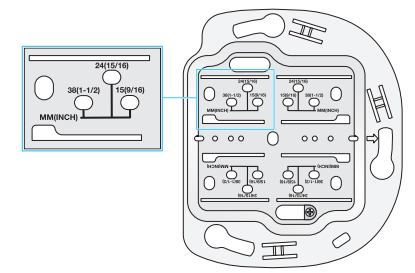
1. Place a ceiling bracket by making its convex part upward and align a ceiling clip to the groove of the ceiling bracket and insert the clip to the position that is shown in the figure. Push and move the ceiling clip according to the T-bar size of the ceiling.



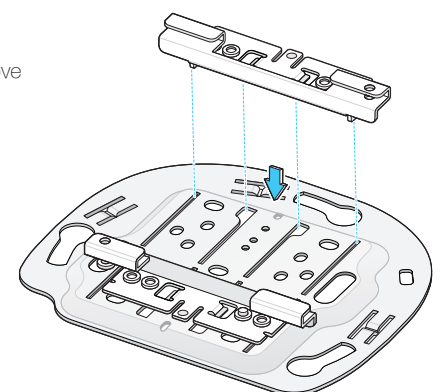
2. Fix the ceiling clip to the ceiling bracket by tightening one M3 x L6 screw to either of the two holes.



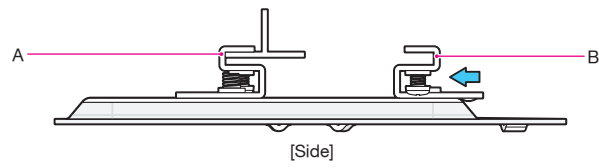
- If the T-bar size of ceiling is 15 mm, 24 mm, or 38 mm, you can check a fixing position where a ceiling clip can be fixed on the floor of ceiling bracket. If the T-bar size is unknown, tighten the two ceiling clips using one screw each in the step 4.



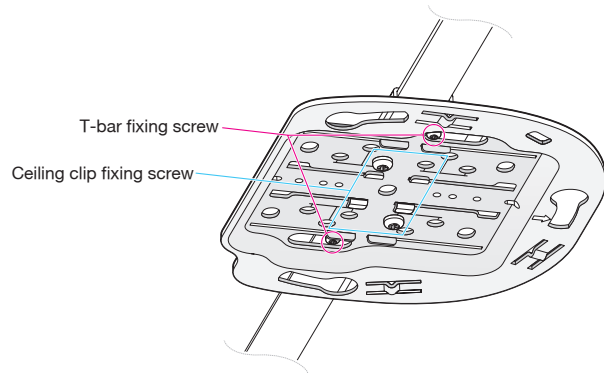
3. Align the ceiling clip on the other side to the groove of ceiling bracket and insert the clip.



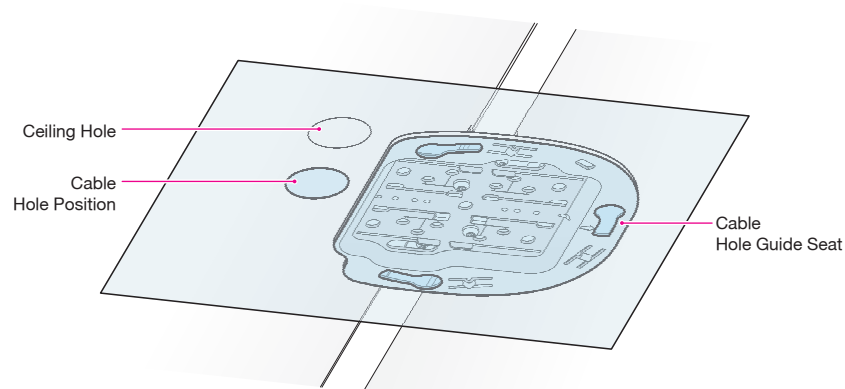
4. After inserting the ceiling clip that is fixed with a screw (A in the figure) to the T-bar, push and move the ceiling clip (B in the figure) on the other side according to the T-bar size.



5. After tightening two T-bar fixing screws of the ceiling clip, and fix the pushed and moved ceiling clip by tightening one M3 × L6 screw to either of two holes. As shown in the figure, the ceiling bracket is firmly fixed to the ceiling.

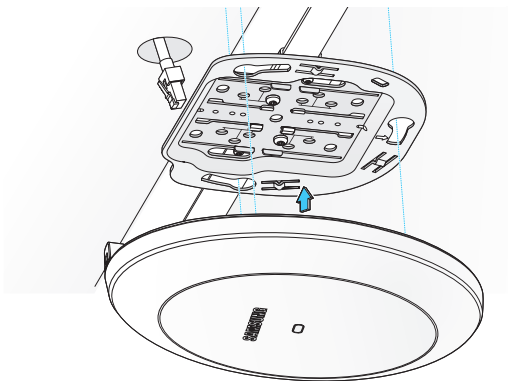


6. Using a cable hole guide seat separately provided, mark a hole on the ceiling tex through which a cable will be drawn out and punch a hole.



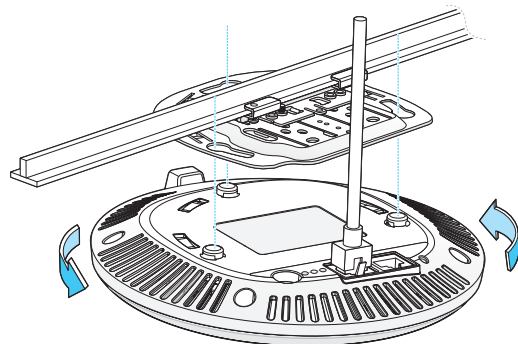
The cable hole guide seat is provided separately. For more information, contact the dealer.

7. After separating the ceiling tex from the T-bar, draw out a LAN cable through the cable hole and connect it to the Ethernet port at the rear side of WEA302i/303i/303e.



If PoE is not supported, connect the power adaptor to the DC input on the back of WEA302i/303i/303e.

8. After aligning the WEA302i/303i/303e to the three grooves of the ceiling bracket, fix the product by turning it clockwise. Arrange ceiling tex and other cables.



Electromagnetic Wave Suitability Notice

Class B Equipment (For Home Use Broadcasting & Communication Equipment)

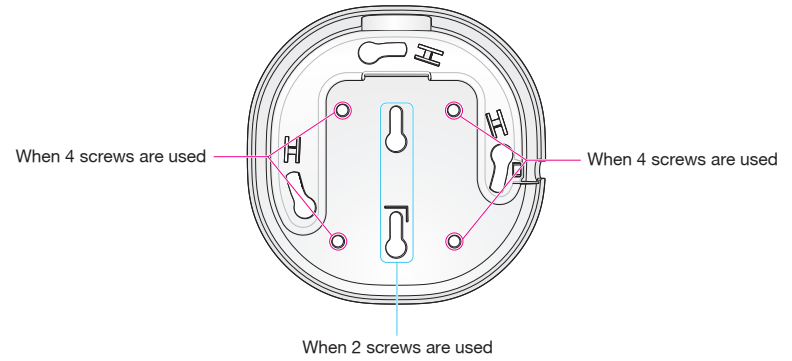
This equipment is home use (Class B) electromagnetic wave suitability equipment and to be used mainly at home and it can be used in all areas.

Installation on a Wall



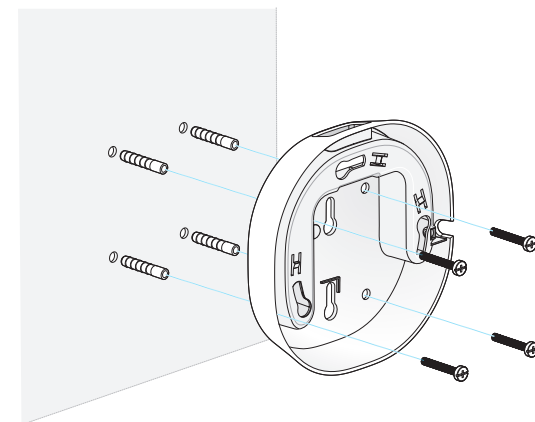
For installation on a wall, the wall mount bracket set (sold separately) is required.

1. A wall mount bracket has total 4 screw holes. Place the bracket on a wall and mark and drill 4 screw holes.

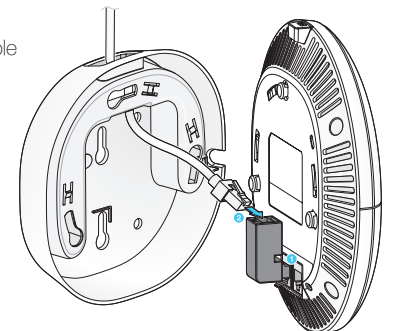


Two screws can be used for fixing depending on a wall to install.

2. Using a hammer, insert 4 plastic anchors to the holes. Align the screw holes of the wall mount bracket to the holes where the plastic anchors are inserted, and fix the wall mount bracket to the wall by tightening four M4 × L28 screws.

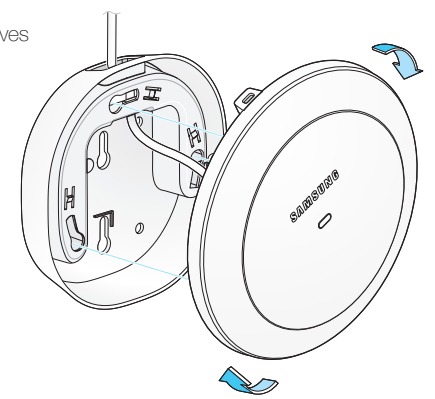


3. First, connect a RJ45 gender to the Ethernet port on the rear side of WEA302i/303i/303e. And pass a LAN cable through the hole at the top of wall mount bracket and connect it to the RJ45 gender.



If PoE is not supported, connect the power adaptor to the DC input on the back of WEA302i/303i/303e.

4. After aligning the WEA302i/303i/303e to the three grooves of the wall mount bracket, fix the product by turning it clockwise.



5. To prevent theft, tighten and fix security torx (T10) screws on the sides of wall mount bracket.



This equipment has been tested and found to comply with the limits for a Class B digital device, pursuant to part 15 of the FCC Rules. These limits are designed to provide reasonable protection against harmful interference in a residential installation. This equipment generates, uses and can radiate radio frequency energy and, if not installed and used in accordance with the instructions, may cause harmful interference to radio communications. However, there is no guarantee that interference will not occur in a particular installation. If this equipment does cause harmful interference to radio or television reception, which can be determined by turning the equipment off and on, the user is encouraged to try to correct the interference by one or more of the following measures:

- Reorient or relocate the receiving antenna.
- Increase the separation between the equipment and receiver.
- Connect the equipment into an outlet on a circuit different from that to which the receiver is connected.
- Consult the dealer or an experienced radio/TV technician for help.



Changes or modifications not expressly approved by the party responsible for compliance could void the user's authority to operate the equipment. Indoor use only.

FCC RF Radiation Exposure Statement:

This equipment complies with FCC RF radiation exposure limits set forth for an uncontrolled environment. This equipment should be installed and operated with a minimum distance of 20 cm between the radiator and your body. This transmitter must not be co-located or operating in conjunction with any other antenna or transmitter.

Part No.: EC68-00172A (Ver.2.0)