



# **Bluetooth Headset**

WEP410



**English . . . . . 1**

# Contents

## BEFORE USING YOUR HEADSET

Checking phone compatibility .....	3
Checking the accessories .....	3
Your headset overview .....	4
Charging the headset .....	5
Storage of the headset .....	6

## BASIC OPERATIONS

Turning the headset on/off .....	7
Pairing with your Bluetooth phone .....	8
Wearing the headset .....	10
Making a call .....	11
Ending a call .....	11
Answering a call .....	12
Adjusting the volume .....	12
Switching on or off the microphone .....	12
Transferring a call from the phone to the headset .....	13
Turning the indicator light on or off .....	13
Using enhanced features .....	13

## APPENDIX

Frequently asked questions .....	15
Safety approvals .....	17
UL certified travel adapter .....	19
Cautions .....	20
Warranty and parts replacement .....	21
Correct disposal of this product .....	23

Thank you for purchasing the Samsung Bluetooth Mono Headset WEP410. We hope you will be delighted with its operation.

Please read this user's guide to get started, and to make the best use of the headset's many features.

### **Copyright information**

Bluetooth® is a registered trademark of the Bluetooth SIC, Inc. worldwide.

### **Driving safety**

- When you are driving a car, driving is your first responsibility.
- When using your headset while driving, follow local regulations in the country or region you are in.

# BEFORE USING YOUR HEADSET



## Checking phone compatibility

Your headset is compatible with most Bluetooth phones that are compliant with Bluetooth version 1.1 or higher and support the Headset and/or Hands-free profile(s). Ensure that your phone has Bluetooth capability by visiting your phone manufacturer's web site.



Some devices, especially those that are not tested or approved by SIG, may be incompatible with your headset.



## Checking the accessories

Make sure you have the following items with your headset:

Set 1: Charging case, Adapter, User's Guide, 2 earpiece covers

Set 2: Charging case, User's Guide, 2 earpiece covers

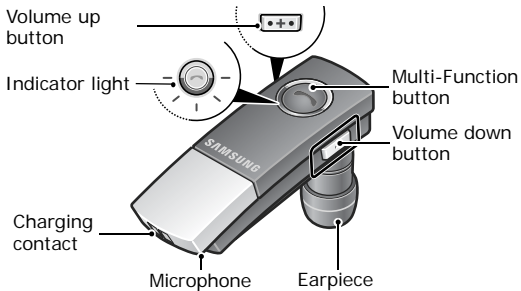
For Set 2, use your phone charger as a power source for recharging.



The items supplied with your headset may vary, depending on your country or service provider.



## Your headset overview

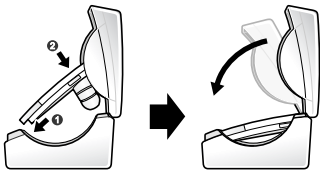




## Charging the headset

Your headset uses a rechargeable battery. You must charge the battery fully before using the headset for the first time.

- 1 Put the headset in the supplied charging case and close the cover.



- 2 Plug the adapter into the case's charging socket.
- 3 Plug the adapter into the electrical outlet.
  - For Set 1, use the adapter provided.
  - Charge the headset until the red light on the headset turns to blue.
  - The headset will be fully charged in approximately 2 hours.

#### 4 Remove the adapter from the case.



Do not attempt to charge the headset with anything other than the adapter provided. Using unauthorized adapter may damage the headset.



For connection to an electrical supply not located in the U.S., you must use an adapter of the proper configuration for the power outlet. Use of the wrong adapter could damage your headset and void your warranty.



The headset is not able to operate while charging. Try connecting after charging is completed.



#### **Storage of the headset**

- Always store the headset with the power off and make sure it is safely protected.
- Avoid storage at high temperatures (above 50° C / 122° F), such as in a hot vehicle or in direct sunlight. Storage at high temperatures can damage performance and reduce battery life.
- Do not expose the headset or any of its supplied parts to rain or other liquids.



# BASIC OPERATIONS



## Turning the headset on/off

To	Press and hold	You will hear	You will see
turn the headset on	the Multi-Function button for 4 seconds until you see <b>4 blue flashes</b> on the indicator light.	a tone.	the indicator light flashes while the power is on (see <b>Meaning of the indicator light</b> ).
turn the headset off	the Multi-Function button for 4 seconds until you see <b>blue and red flashes</b> on the indicator light.	series of 2 tones.	the indicator light stops flashing.

## Meaning of the indicator light

Light	Tone	Status
Flashes in blue every 8 seconds.	Quick series of 2 tones. (Active mode starts.)	<ul style="list-style-type: none"> <li>The headset is in Active mode.</li> <li>The headset has an active call in progress.</li> <li>You can talk up to 4 hours.*</li> </ul>

Light	Tone	Status
Flashes in blue every 3 seconds.	Quick series of 2 tones. (Standby mode starts.)	<ul style="list-style-type: none"> <li>• The headset is in Standby mode.</li> <li>• The headset is waiting for a call.</li> <li>• The headset can be in Standby mode up to 70 hours.*</li> </ul>
Flashes in red.	5 tones every 20 seconds.	The battery of the headset is low. <ul style="list-style-type: none"> <li>• There is less than 10% of battery power left. Recharge the battery.</li> </ul>

\* Depending on the phone type and usage, the actual time may vary.



## Pairing with your Bluetooth phone

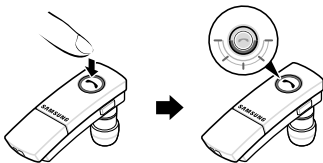
Pairing will create a unique and encrypted wireless link between two Bluetooth enabled devices, such as your Bluetooth phone and Bluetooth headset.



When you turn on your headset for the first time, the headset proceeds into Pairing mode so that you can immediately pair it with other devices.

- 1 Make sure that the headset is off (see **Turning the headset on/off**).

- 2 Press and hold the Multi-Function button until the indicator light turns blue (approximately 8 seconds).



Only half of the light will turn blue.

- 3 Set your Bluetooth phone to discover the headset by following your phone's guide.  
Typically, the steps involve going to a 'Settings,' 'Connection', or 'Bluetooth' menu on your phone and then selecting the option to discover Bluetooth devices.
- 4 Your phone will find the Samsung WEP410 headset and ask if you want to pair with it. Confirm this by pressing the **Yes** or **OK** key.
- 5 Enter a passkey or PIN, 0000 (4 zeros), then press the **Yes** or **OK** key.



- If pairing was successful, the indicator light will flash in blue 10 times rapidly before going to flashing every 3 seconds. If unsuccessful, the light remains on, and you will need to re-attempt pairing.
- When you turn on your headset after pairing with the phone, the headset is automatically connected to the phone.
- When you turn on your phone after pairing with the headset, the phone is connected to the headset by pressing the Multi-Function button.



## **Wearing the headset**

Wear the headset on your ear. In general, you will get better performance when there are no obstructions (including parts of your body) between the headset and the phone.



You are supplied with three different earpiece covers. Choose one that is most comfortable for you.



## Making a call

### Making a voice activated call

If the voice recognition feature is on, you can make a voice activated call.

**1** Press and hold the Multi-Function button. You will hear the voice-activation tone.

**2** Say the name of the person you wish to call.

Depending on your phone, this feature may not be supported.

### Redialing the last number

Press the Multi-Function button. When you release the button, the phone dials the last dialed or received number.

Depending on your phone, how to redial the last number may vary.



## Ending a call

Press the Multi-Function button.



## Answering a call

When a call comes in, the headset sounds series of 2 tones and flashes the blue indicator twice. Press the Multi-Function button.



Do not hold the Multi-Function button down too long when making a call with your voice, ending, or answering a call. This should only be a quick tap.



## Adjusting the volume

Press [+] on the side of the headset to increase the volume level and [-] to decrease the volume level.



At very high volumes, prolonged listening to the headset can damage your hearing.



## Switching on or off the microphone

Press and hold [+] or [-] to switch off the headset's microphone. To switch it back on, press and hold either one again.



## Transferring a call from the phone to the headset

If you answer the call with your phone, you can transfer the call to the headset by pressing the Multi-Function button.



## Turning the indicator light on or off

You can deactivate the use of the indicator light in Standby mode and in Active mode.

Press and hold [+] and [-] at the same time to turn the indicator light on or off.



## Using enhanced features

Enhanced features are available for phones that support the Hands-free profile and enhanced features.

- **Rejecting a call**

When you receive a call, press and hold the Multi-Function button to reject the call.

Depending on your phone's setting or type, you may only be able to mute the ringer or this feature may not be supported.

- **Placing a call on hold**

While you are on a call, press and hold the Multi-Function button.

To retrieve the call, press and hold the Multi-Function button again.

Depending on your phone, this feature may not be supported.

- **Answering a second call**

When your phone notifies you of another incoming call while you are on a call, press and hold the Multi-Function button to place the call on hold. Then press the Multi-Function button to answer the second call.

You can switch between calls by pressing and holding it.

Depending on your phone, this feature may not be supported.





## Frequently asked questions

<b>How far away from my phone will the headset work?</b>	The operating range is typically up to 30 feet (10 meters).
<b>Will the headset work with my cordless phone at home?</b>	The headset is not designed for use with cordless phones.
<b>Will the headset work with laptops, PCs, and PDAs?</b>	The headset will work with devices that are compliant with Bluetooth version 1.1 or higher and support the headset and/or hands-free profile(s).
<b>Will anything cause interference with my conversation when I'm using the headset?</b>	Appliances such as cordless phones and wireless networking equipment may cause interference with your conversation. To reduce any interference, keep the headset away from other devices that use or produce radio waves.

<b>Will the headset interfere with my car's electronics, radio, or computer?</b>	The headset produces significantly less power than a typical mobile phone. It also only emits signals that are in compliance with the international Bluetooth standard. Therefore, you should not expect any interference with standard consumer-grade electronics equipment.
<b>Can other Bluetooth phone users hear my conversation?</b>	When you pair the headset to your Bluetooth phone, you are creating a private link between only these two Bluetooth devices. The wireless Bluetooth technology used in the headset is not easily monitored by third parties, because Bluetooth wireless signals are significantly lower in radio frequency power than those produced by a typical mobile phone.
<b>How do I take care of the headset?</b>	To clean the headset, use a clean, soft cloth that is slightly damp.



### FCC

FCC ID: A3LWEP410

This device complies with part 15 of the FCC Rules. Operation is subject to the following two conditions:

(1) This device may not cause harmful interference, and (2) this device must accept any interference received, including interference that may cause undesired operation.

The device and its antenna must not be co-located or operating in conjunction with any other antenna or transmitter.

Users are not permitted to make changes or modify the device in any way.

Changes or modifications not expressly approved by Samsung will void the user's authority to operate the equipment.

## **Industry Canada**

IC ID: 649E-WEP410

Operation is subject to the following two conditions: (1) This device may not cause interference and (2) This device must accept any interference, including interference that may cause undesired operation of the device.

The term "IC:" before the certification/registration number only signifies that registration was performed based on a Declaration of Conformity indicating that Industry Canada technical specifications were met. It does not imply that Industry Canada approved the equipment.

## Bluetooth

The Bluetooth<sup>®</sup> word mark and logos are owned by the Bluetooth SIG, Inc. and any use of such marks by Samsung is under license. Other trademarks and trade names are those of their respective owners.

### **UL certified travel adapter**

The travel adapter for this headset has met UL 1310 safety requirements. Please adhere to the following safety instructions per UL guidelines.

**FAILURE TO FOLLOW THE INSTRUCTIONS OUTLINED MAY LEAD TO SERIOUS PERSONAL INJURY AND POSSIBLE PROPERTY DAMAGE.**

**IMPORTANT SAFETY INSTRUCTIONS - SAVE THESE INSTRUCTIONS.**

DANGER - TO REDUCE THE RISK OF FIRE OR ELECTRIC SHOCK, CAREFULLY FOLLOW THESE INSTRUCTIONS.

FOR CONNECTION TO A SUPPLY NOT IN THE U.S.A., USE AN ATTACHMENT PLUG ADAPTOR OF THE PROPER CONFIGURATION FOR THE POWER OUTLET.

## Cautions

### Cautions

Changes or modifications made in the radio phone, not expressly approved by Samsung, will void the user's authority to operate the equipment. Only use approved batteries, antennas and chargers. The use of any unauthorized accessories may be dangerous and void the phone warranty if said accessories cause damage or a defect to the phone. Although your phone is quite sturdy, it is a complex piece of equipment and can be broken. Avoid dropping, hitting, bending or sitting on it.



## Warranty and parts replacement

Samsung warrants this product as free of defects in material, design and workmanship for the period of one year from the original date of purchase.

If during the period of warranty this product proves defective under normal use and service you should return the product to the retailer from whom it was originally purchased or qualified service center. The liability of Samsung and its appointed maintenance company is limited to the cost of repair and/or replacement of the unit under warranty.

- The warranty is limited to the original purchaser
- A copy of your receipt or other proof of purchase is required for a proper warranty service
- The warranty is void if the serial number, date code label or product label is removed, or if the product has been subject to physical abuse, improper installation modification, or repair by unauthorized third parties
- The responsibility of Samsung products shall be limited to the repair or replacement of the product at its sole discretion
- Specifically exempt from any warranty are limited-life consumable components such as batteries and other accessories

- Samsung is not liable to for any incidental or consequential damages arising from the use or misuse of any Samsung product
- This warranty gives you specific rights and you may have other rights which vary from area to area
- Unless otherwise instructed in the User Guide, the user may not, under any circumstances, attempt to perform service, adjustments or repairs on the unit, whether in or out of warranty. It must be returned to the purchase point, factory or authorized service agency for all such work
- Samsung will not assume any responsibility for any loss or damage incurred in shipping. All repair work on Samsung products by unauthorized third parties voids any warranty





## Correct disposal of this product

(Waste Electrical & Electronic Equipment)



This marking shown on the product or its literature, indicates that it should not be disposed with other household wastes at the end of its working life.

To prevent possible harm to the environment or human health from uncontrolled waste disposal, please separate this from other types of wastes and recycle it responsibly to promote the sustainable reuse of material resources.

Household users should contact either the retailer where they purchased this product, or their local government office, for details of where and how they can take this item for environmentally safe recycling.

Business users should contact their supplier and check the terms and conditions of the purchase contract. This product should not be mixed with other commercial wastes for disposal.

# SAMSUNG ELECTRONICS



World Wide Web

<http://www.samsungmobileusa.com>

<http://www.samsungmobile.com>

<http://www.samsung.com/ca>

<http://www.samsung.com.br>

Printed in Korea

Code No.:GH68-~~xxxxx~~A

09/2006. Rev. 1.0