



Laser Printer, Scanner

User's Guide

SF-5800P





Trademarks

- Windows is a trademark of Microsoft Corporation.
- IBM is a trademark of International Business Machines.
- Centronics is a trademark of Centronics Data Computer.
- Other names and trademarks mentioned in this manual are trademarks of their respective holders.

Contents

Chapter 1

Installing SmarThru Software

About SmarThru Software _____	1.1
MFP Driver _____	1.2
SmarThru Software _____	1.2
OCR software _____	1.2
Bonus Software _____	1.2
System Requirements _____	1.3
Installation Procedure _____	1.3
Install the Samsung Software _____	1.3
Install Bonus Software _____	1.6
Uninstalling SmarThru Software _____	1.6
In Windows 95/98, NT _____	1.6
In Windows 3.x _____	1.7
Using the SmarThru CD-ROM _____	1.8

Chapter 2

Printing

Printing a Document _____	2.1
Printer Settings _____	2.2
Basic Tab _____	2.2
Print Quality Tab _____	2.3
Advanced Tab _____	2.3
About Tab _____	2.4
Using Help _____	2.4
Changing Printer Settings for All Documents _____	2.4

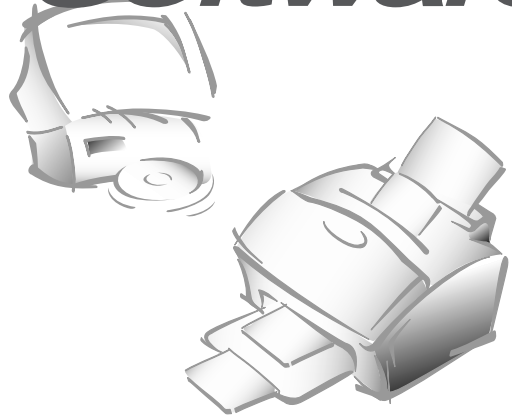
Scanning

Overview	3.1
Scanning the Image	3.2
Samsung TWAIN for Scan Windows	3.3
Using On-Line Help	3.3
Scanner Control Tabs	3.4
Basic Tab	3.4
Job Type	3.4
Image Type	3.4
Resolution	3.5
Image Area	3.6
Reduce/Enlarge	3.6
Balance Tab	3.8
Color Channel	3.8
Highlight	3.8
Shadow	3.8
Midtone	3.9
Advanced Selection	3.9
Effects Tab	3.14
Rotate Image	3.14
Flip Image	3.14
Sharpness	3.15
Descreen	3.16
Preview Window	3.17
Image Control Tools	3.18

Troubleshooting

Fixing Problems	4.1
Printer Problems	4.1
Printer Quality Problems	4.3

Installing SmarThru Software



About SmarThru Software

You must install the SmarThru CD-ROM to print, scan, or to send and receive electronic faxes. The SmarThru includes the followings:

- MFP Driver
- SmarThru Software
- OCR Software (AnyPage)
- Bonus software (Acrobat Reader 3.xx)

For details on the drivers, refer to each item's description.

MFP Driver

To use the machine as your printer, or scanner, or to send and receive electronic faxes, you must install the MFP driver.

SmarThru Software

The SmarThru software contains:

ScanThru

It lets you scan documents and images quickly and easily. With the ScanThru, you can set image type and resolution for the scanner, adjust brightness and contrast, perform a color correction, and so on.

CopyThru

It lets you make a copy of the scanned documents or images. With CopyThru, you can change resolution and image type used for copying, and so on.

FaxThru

It helps you to create fax covers and send electronic faxes.

DocuThru

General form to work with messages. With DocuThru, you can perform all the operations of the SmarThru system.

ImageThru

It is an image database manager and image editor program. With the ImageThru, you can search the database for images, adjust parameters of an image, such as brightness, contrast and saturation, and apply different effects, such as sharpening, emboss, posterize, mosaic etc. You can also send images by fax or mail

MailThru

With MailThru you can send, receive and easily organize your work with e-mail messages. The system provides you with convenient tools which let you sort and find messages using a number of criteria; operate on messages using scenatios.

OCR Software (AnyPage)

OCR (Optical Character Recognition) is a software that has the ability to recognize most character formats. So that a scanned document can be read and edited on your word processor.

Bonus Software

Acrobat Reader 3.x is installed. With Acrobat Reader 3.x, you can view and print the SmarThru User's Guide contained in the SmarThru CD-ROM.

System Requirements

Before you start, make sure you have the following minimum computer setup:

- Windows 3.x, or Windows 95/98: 486SX 33MHz or higher processor with 8 MB or higher RAM
- Windows NT 4.0 (Service Pack 3): Pentium 90 or higher CPU with 32 MB or higher RAM
- Free disk space of at least 50MB for full installation
- CD-ROM drive

Installation Procedure

- ✓ *Make sure the machine is plugged in and connected to your computer. Turn your computer and the machine on.*
- ✓ *If Windows 95/98 users see the “New Hardware Found” screen, close it by clicking **Cancel**.*

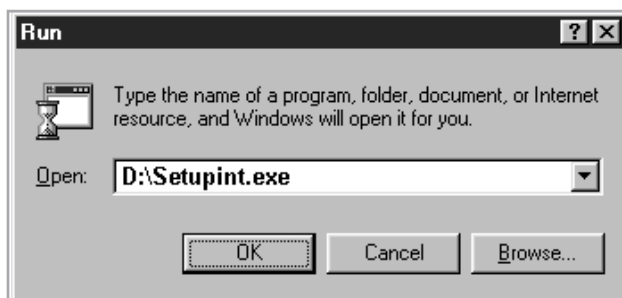
Install the Samsung Software

1. Insert the supplied CD-ROM into your CD-ROM drive.

The SmarThru program is automatically running and the Samsung SmarThru Installation screen will appear.

If the Samsung SmarThru Installation screen does not appear:

- 1) Windows 95/98 users should select **Run** from the **Start** menu.
Windows 3.x users should select **Run** from the **File** menu.
- 2) Type **D:\Setupint** (where ‘D’ represents the letter designation of your computer’s CD ROM drive), and click **OK** to start the installation program.

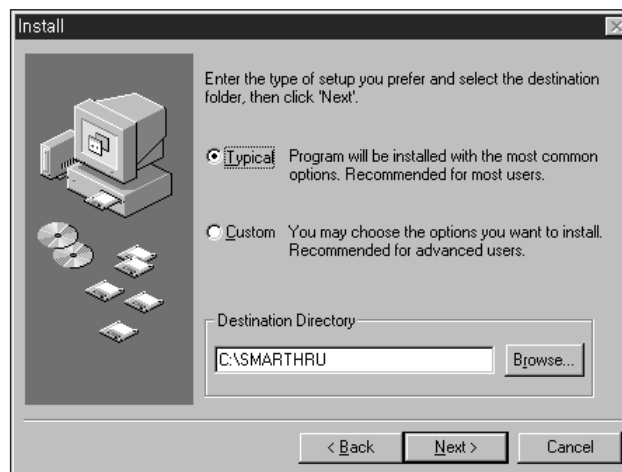


2. Select a language in dialog for international version setup. Then the SmarThru program will begin. **Click Install the Samsung Software on your PC.**

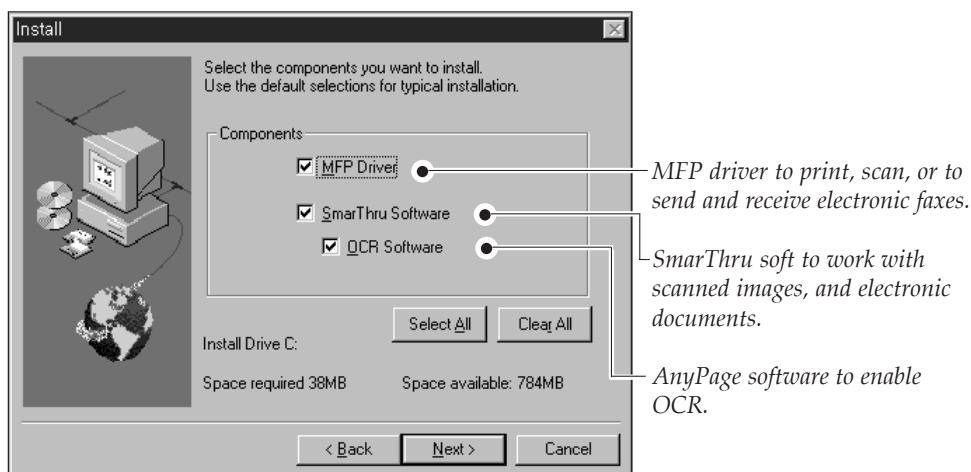


3. Follow the on-screen instructions and click **Next**.

The SmarThru installation supports two types of setup. Typical setup will be installed with the most common options. Recommended for most users. In Custom setup, you can select components to be installed.



If you select Custom installation, you may choose the options you want to install.



4. When the installation is completed, you must shut down and restart your computer.

If your computer does not shut down and restart automatically, you must shut it down manually and restart it before the changes you have made will be in ineffect.

5. After Windows restarts, the Select Service dialog box will appear. You can select the system service you want to use.



6. Click Next and follow the on-screen instructions.

Install Bonus Software (Acrobat Reader 3.xx)

1. Insert the SmarThru CD-ROM into your CD-ROM drive.

The SmarThru installation program will begin. If the program does not start, select **Run** from the **Start** menu for Windows 95/98. For Windows 3.1x, select **Run** from the **File** menu, then type **D (or E) : \Setupint**, and click **OK** to start the program.

2. Select a language in dialog for international version setup. When the Samsung SmarThru Installation screen appears, click **Install bonus software on your PC**, and follow the on-screen instructions.

Uninstalling SmarThru Software

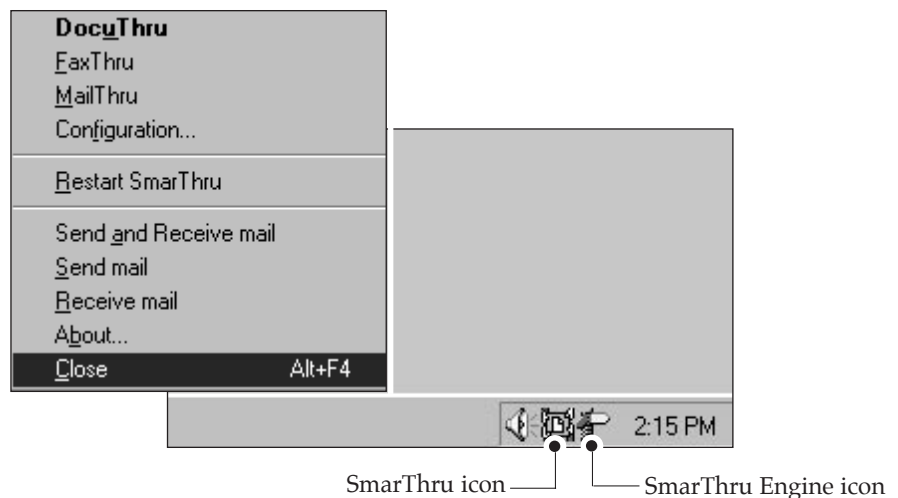
Uninstallation is only required if you are upgrading the software, or if your installation fails.

In Windows 95/98, NT

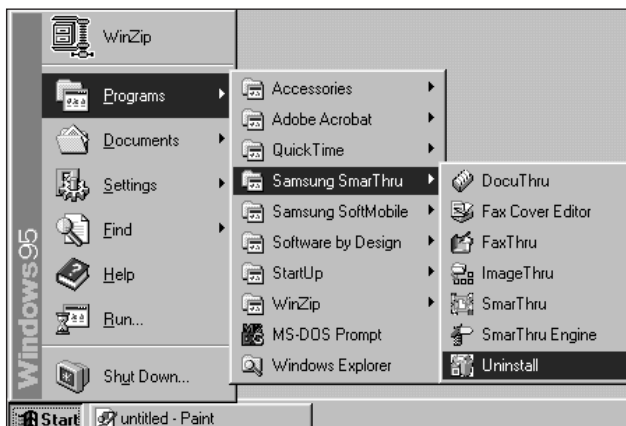
1. Start Windows if not already started.

2. If you find the SmarThru icon and/or the SmarThru engine icon on the right corner of the taskbar at the bottom of your screen, the SmarThru application and the SmarThru engine are working. Close the application and the engine as follows:

Right-click the icon. When the pop-up menu opens, select **Close.**



3. From the **Start** menu, select **Programs**.
4. Select **Samsung SmarThru**, then **Uninstall**. The uninstall dialog box appears. Follow the instructions on the screen to complete uninstallation.



In Windows 3.x

1. Start Windows if not already started.
2. If you find the SmarThru icon and/or the SmarThru engine icon at the bottom of your screen, the Smarthru application and the SmarThru engine are working. Close the application and the engine as follows: **Click the icon. When the pop-up menu opens, select Close**
3. From the **Program Manager**, double click the **Samsung SmarThru**.
4. **In the SmarThru windows, double click the Uninstall icon.** The Uninstall dialog box appears. Follow the on-screen instructions to complete uninstallation.

Using the SmarThru CD-ROM

You can uninstall the MFP driver and the SmarThru software with the CD-ROM you have used to install the software.

1. If you find the SmarThru icon and/or the SmarThru engine icon at the bottom of your screen, the SmarThru application and the SmarThru engine are working. Close the application and the engine as follows:
Click the icon. When the pop-up menu opens, select Close.

2. **Insert the SmarThru CD-ROM into your CD-ROM drive.**

The SmarThru installation program will begin. If the program does not start, select **Run** from the **Start** menu (for Windows 95/98. For Windows 3.x, select **Run** from the **File** menu), then type **D (or E) : \Setupint**, and click **OK** to start the program.

3. Select a language in dialog for international version setup. When the Samsung SmarThru Installation screen appears, **click Uninstall the Samsung software your PC, and follow the on-screen instructions.**

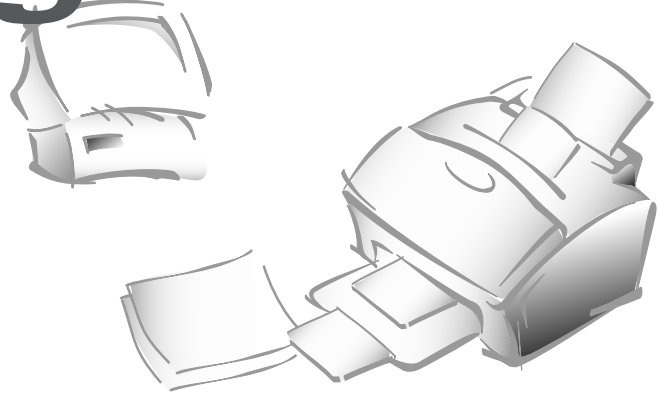
4. **Click on the checkboxes to select the components you wish to uninstall. Click on Next.**



The selected components are uninstalled. You must shut down and restart your computer to complete the uninstallation process. If your computer does not shut down and restart automatically, you must shut it down manually and restart it before the changes you have made will be in effect.



Printing



Printing a Document

This procedure describes the general steps required for printing from various Windows applications. The exact steps for printing a document may vary depending on the application program you are using. Refer to your software application's documentation for the exact printing procedure.

1. Make sure that your machine is properly connected to the computer, and the On/Off Line lamp light is steadily on (if it is not, press the On/Off Line button).

Make sure that you have installed the MFP driver contained on the supplied setup CD-ROM. See 'Installing SmarThru Software' on page 1.1.

2. **Create or open the document you want to print.**
3. **Choose Print or Print Setup from the File menu.** Make sure that your printer is selected as the default printer.
4. **Click on the Properties or Setup button if you want to make any adjustments that are appropriate for printing your document.** (See 'Printer Settings' on page 2.2.)
5. **Select OK to close the Properties dialog box.**
6. **After making any necessary changes to the printing parameters, select OK to start the printing job.**

Printer Settings

You can use your machine with all your Windows 3.x or Windows 95/98, or Windows NT applications. Be sure to set your printer as the default printer for all your Windows operations.

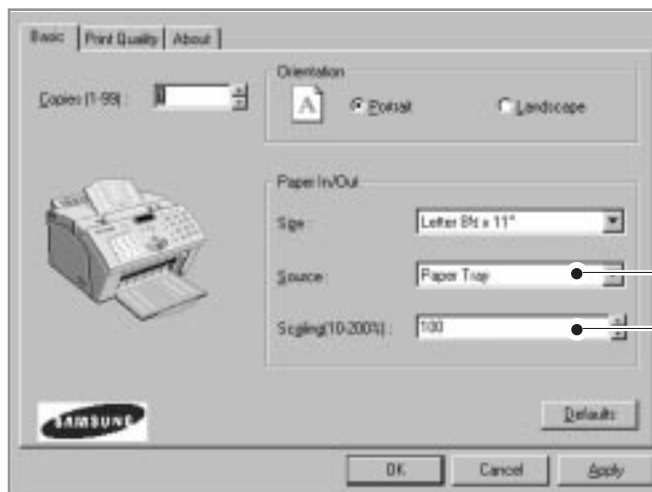
Most Windows software applications allow you to make changes to the printer settings. This changes the number of copies, sequence of the pages, and paper orientation.

If you click Properties, Setup, or Options in the Print dialog box, you'll access the printer driver's dialog box. It allows you to change additional printer settings. Settings changed in the software application will usually override settings made in the printer driver.

Your printer driver's Properties dialog box includes three tabs (four tabs on Windows NT only).

Basic Tab

This tab allows you to specify number of copies, paper orientation, paper source, paper size, and image scaling size.

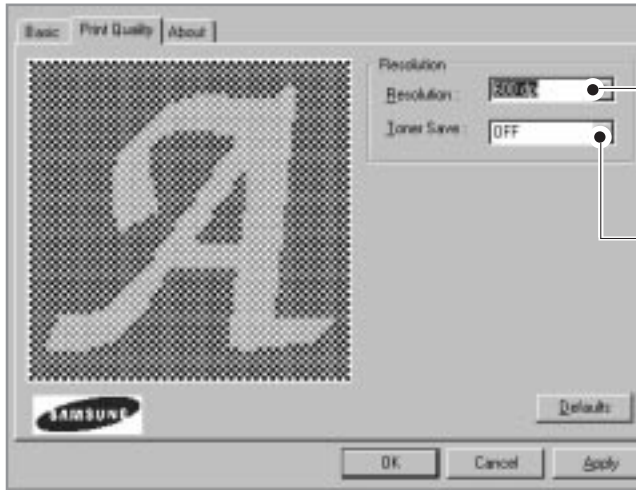


If you load paper into the manual feeder slot, select 'Manual Feed.'

This setting allows you to enlarge or reduce the image on the print page.

Print Quality Tab

This tab allows you to specify the print resolution.

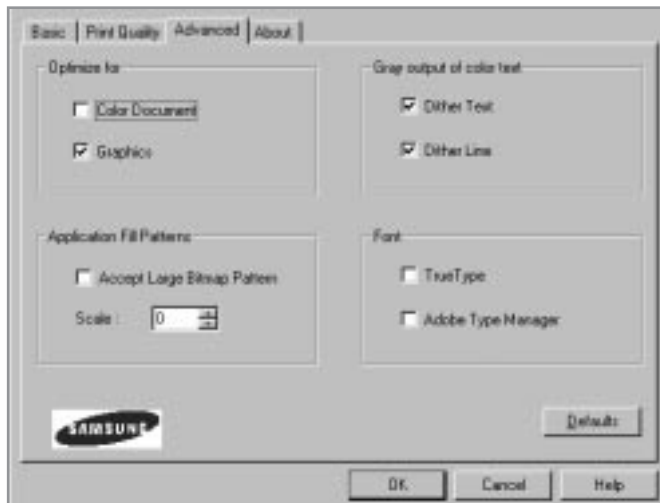


In general, higher resolution looks better but takes longer to print and requires more memory.

If you want to save toner when you are printing, select 'ON'.

Advanced Tab

If you are a Windows NT user, you can see 'Advanced Tab', if you want to know more about 'Advanced Tab', click on the help button. The help screen gives detailed information about each menu.



About Tab

This tab shows the printer software version.

Using Help

Your printer driver includes comprehensive screen help. For detailed information about each setting, press F1 key except Windows 3.x.

Changing Printer Settings for All Documents

Changing the printer settings from your application program will change them for one document. If you want to change for all documents you print on this printer, open the printer Properties dialog box as shown below, then change the printer settings.

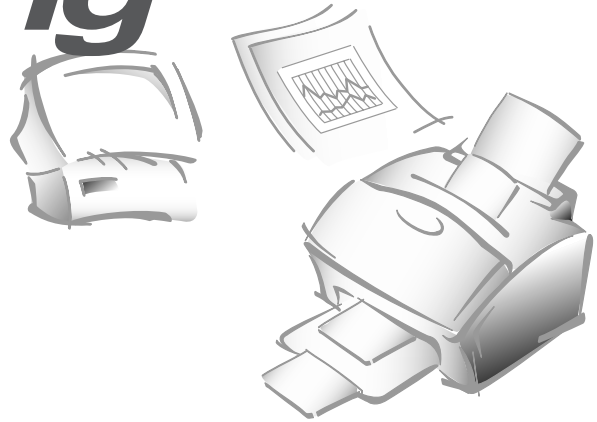
- ✓ Windows NT users should select properties via Application's Print Menu.

Windows 95/98 users should select **Start, Settings, Printers**. Then from the **File** menu, click **Properties**.

Windows 3.x users should select **Program Manager, Main, Control Panel, Printers**. Then click **Setup**.



Scanning



Overview

Scanning converts a photo or paper document into a computer image. Types of documents that you can scan include photos, drawings, magazine pages, newspaper articles, and just about any other type of single page image. You put the paper into the scanner, and then the computer and scanner work together to create a computer image.

After you have installed the supplied CD-ROM, you can use the machine as a black and white scanner. The CD-ROM contains the *SmarThru* program which is easy and convenient tool to manage your work with a scanned image. With *SmarThru*, you can quickly scan and save the image, make copies of part of the image, and use the image in creative projects, like newsletters, brochures, letterhead, and more. You can also share the scanned images electronically through E-mail, and fax. For details on how to use the *SmarThru* program, use the on-line help, or refer to the User's Guide which is contained in the CD-ROM.

You can also use other TWAIN-compliant image editing software application like SoftScan Pagies SE, Text Bridge, or Adobe Photoshop. The Samsung TWAIN for Scan window will be displayed when you choose Samsung TWAIN for Scan to scan documents or photographs from the TWAIN-compliant image editing application.

In general, *SmarThru* use ScanThru for scanning process. If you want use TWAIN Driver's UI for professional scanning in manual, please do following steps.

1. If you find the *SmarThru* icon on the right corner of the taskbar at the bottom of your screen, the *SmarThru* application is working. Right-click the icon. When the pop-up menu opens, select ScanThru Options.
2. If you want to use TWAIN UI, please select 'Show TWAIN UI' item. After that you can use TWAIN Driver's UI when you scan.

Scanning the Image

This section describes the basic procedures for scanning with a TWAIN-compliant image editing application.

1. Turn on your machine and PC, then start Windows.
2. Open your TWAIN-compliant image editing application.
3. Choose **Select Source** from the **File** menu.
4. Select **Samsung TWAIN for Scan** in the Select Source dialog box.
5. Open the **File** menu, and select **Acquire**. The Samsung TWAIN for Scan window will appear. For the window, see the next page.
6. Select the appropriate scanning options for the document or photograph you want to scan.

For more information on scanning controls, preview options, and other advanced scanning features, see page 3.4.

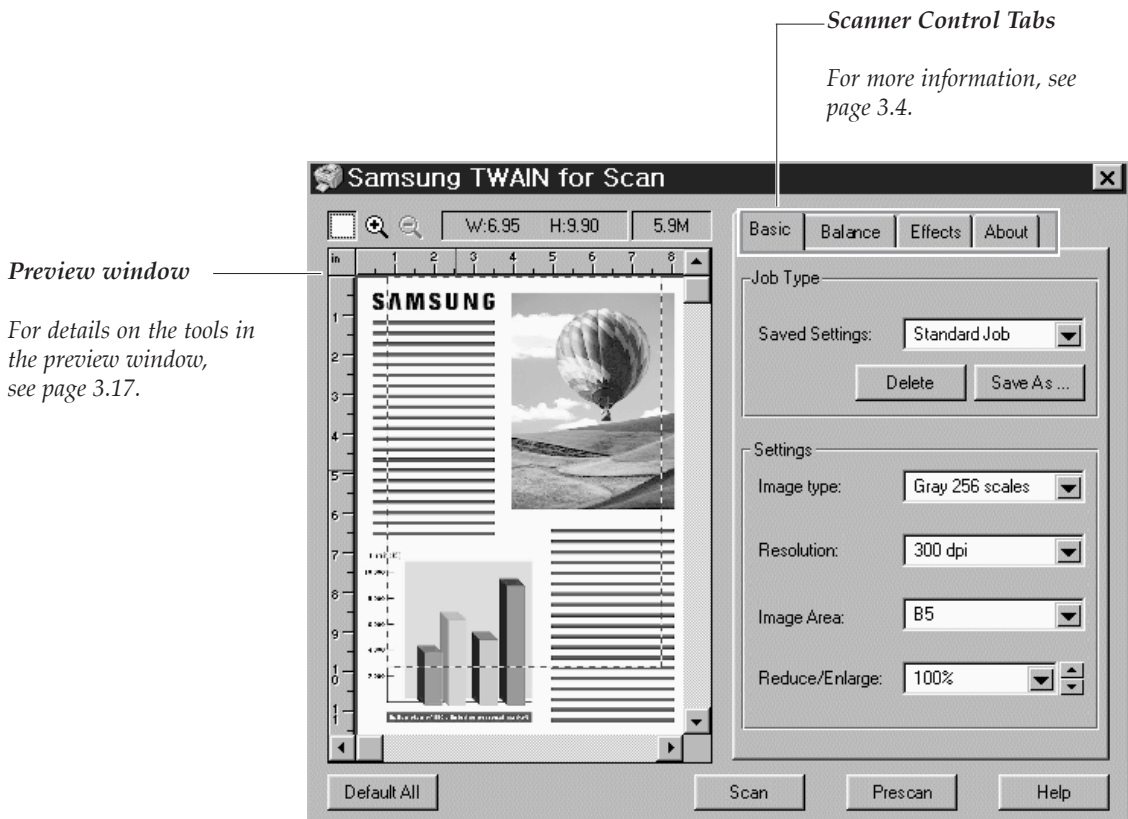
7. Load the document or photo in the document feeder of your machine.



8. Click on **Scan**. The document will be scanned and displayed in the image editing application.
- ✓ After scanning, this User Interface dialog is not shown for multiple scanning. If you don't need to additional scanning, please close this TWAIN dialog.

Samsung TWAIN for Scan Window

The Samsung TWAIN for Scan window is used to view and modify the scanned image. Using the features of this window, various image processing options can be applied to the scanned image.



Using On-Line Help

You can refer to the Samsung TWAIN for Scan on-line help function for assistance. To access the on-line help, roll the course over the feature of the window the help is desired for. A yellow popup dialog box will appear. Click on the dialog box to access on-line help.

On-line Help contains information about using the menus and commands. Use **Help** anytime you need information on how to use a particular menu or command.

Scanner Control Tabs

You can adjust the settings for the document or photograph to be scanned prior to capturing the image using the features of the Scanner Control tabs.

Each of the tabs is described in detail in the following sections:

- for Basic tab, see page 3.4.
- for Balance tab, see page 3.8.
- for Effects tab, see page 3.14.

The About tab shows the version of the Samsung TWAIN for Scan application.

Basic Tab

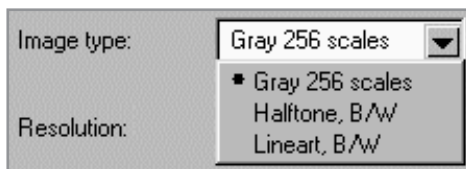
Job Type

This menu allows you to select the job type.



Image Type

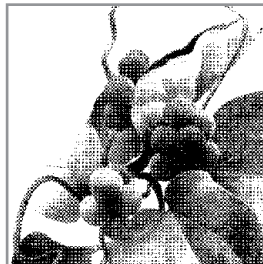
This menu specifies the mode in which the image is to be scanned in.



The following pictures show examples of the various scan modes.



Gray 256 scales



Halftone, B/W



Lineart, B/W

Gray 256 Scales

Images scanned in this mode will show up to 256 shades of gray. If high quality copies of photographs or other continuous tone originals are desired, Gray 256 Scales is the best choice.

Gray 256 Scales provides accurate representation of black and white, and intermediate gray shades between black and white, for each individual pixel. It actually provides 256 shades, representing white by the value 255 and black by the value zero, with progressively lighter intermediate shades of gray by values from 1 through 254.

Halftone B/W

This scan mode uses various combinations of black and white pixels to simulate gray scales. While not the same level of image quality as the Gray 256 Scales image type, this image type is good for continuous tone images where smaller file size is more important than ideal image quality.

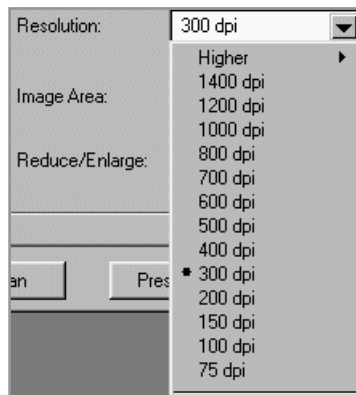
Lineart B/W

Lineart B/W mode is generally the best choice for printed text or pen-and-ink drawings. Like the Halftone B/W image type, this image type defines the state of each pixel in the image with one bit that is either on or off. For this reason, files created in this mode will require approximately the same amount of disk space as a Halftone B/W file.

✓ In both Halftone and Lineart modes, the resolution can only be set to 150, 200, or 300 dpi.

Resolution

The resolution setting determines the amount of information the scanner will capture in a resulting scanned image.



The resolution can be measured in dpi (dots per inch). The higher the resolution is, the finer the image detail and the bigger the image file size is. See the examples of images at 75 and 300 dpi.



300 dpi



75 dpi

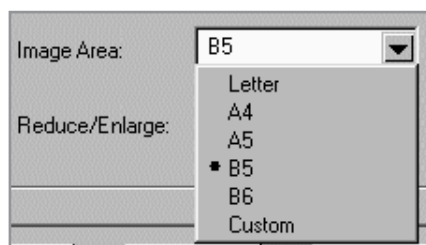
You can select any one of the resolutions shown on the **Resolution** menu, or specify your own resolution by selecting the **Custom** option which invokes the **Custom Resolution** dialog box.

To use the Custom Resolution dialog box, type the desired resolution (in dpi), and click **OK**. The custom resolution created will be displayed in the **Resolution** menu.

- ✓ **The Resolution settings can be restored by clicking Defaults at the bottom of the Basic tab.**

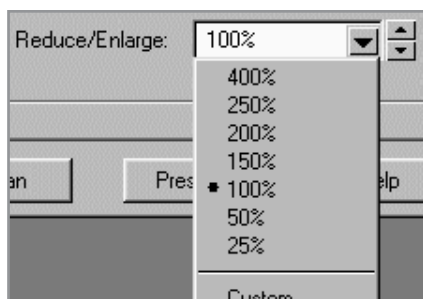
Image Area

You can select any size of scanning area on the image area menu. This reflects the selection frame on Preview window.



Reduce/Enlarge

This feature allows an image to be automatically enlarged or reduced as it is scanned. The default scale factor is 100%. The selected scaling factor, the range of which is dependent on the selected image type, affects the printed scan output.



- ✓ When scanning a printed image for screen display only, scale the image down to increase processing speed and decrease the file size.



Scaling 100%



Scaling 50%

Fixed scaling options are displayed in percentages of reduction or enlargement. Image width and height are scaled proportionally when fixed scaling factors are used. To scale to a size other than the fixed sizes, select the **Custom** option in the **Scaling** menu. The Custom Scaling dialog box will appear.

To change Height or Width text box values:

1. Insert the desired height or width value into the Height or Width edit boxes.
2. The units of measurement may be changed to inches, centimeters, millimeters, pixels, picas or percentages of the original image dimensions by selecting the desired unit of measurement from the **Units** drop-down list boxes to the right of the Height and Width text boxes.
3. To prevent distortion of the image when changing height and width values, the height and width values are automatically linked - you need only enter one value, either a Height or Width value. The other value will be computed and the image will resize proportionately.

- ✓ You can also change Height and Width values by directly adjusting the selection frame.
- ✓ Output image file size is proportional to both Height and Width. If both Height and Width values are doubled, then the image area and image file size will increase four-fold.
- ✓ Once you have confirmed or changed the size, resolution, and final scan boundary settings, the scanning software determines the size of the resulting scanned image and displays this information along with available hard disk space.

Balance Tab

Color Channel



The Color Channel radio buttons are used to specify the color channel in which to change the Highlight, Shadow and Midtone values.

The only channel available to be selected when using your machine to scan is the Gray channel. Red, Green and Blue are used for scanners capable of scanning documents in color.

Highlight



The Highlight value represents the lightest value in an image. All pixels above this point will be rendered as pure white. If you subsequently broaden the highlight points on the Level Adjustment graph, the pixels will be remapped within the new range, thus allowing you to see more detail in the image.

The Highlight scroll bar allows you to manually set a highlight level. The default for the Highlight settings is 255. You can increase or decrease the highlights in a particular image as needed by adjusting this scroll bar. The value in the adjacent box will change in the range 1 to 255 as the slider moves.

Shadow



The Shadow value represents the darkest value in an image. All pixels below this point will be rendered as pure black. If you subsequently broaden the shadow points on the Level Adjustment graph, the pixels will be remapped within the new range thus allowing you to see more detail in the image.

The default value for Shadow is 0. You can increase or decrease the shadows in a particular image as needed by adjusting this scroll bar.

Midtone



All optical devices such as monitors and scanners have some differences in their light sensitivity characteristics. Samsung TWAIN provides Midtone adjustment for you to compensate for these differences in your scanner, and it produces better scanned images.

To change the Midtone value, move the slider to the left or right to change the values in the adjacent text box. The value in the adjacent box will change in the range 0.1 to 10.0 as the slider moves.

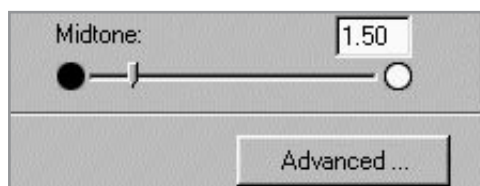
Ordinarily, good results can be obtained from your machine by leaving the slider at its default value of 1.00.

Advanced Selection

The advanced selection will present features that allow you to modify the Level Adjustment and the Tonal Map of the document.

For both the Level Adjustment and the Tonal Map functions, the window displayed contains small representations, known as thumbnail views, of the original and enhanced images (Samples 1 and 2).

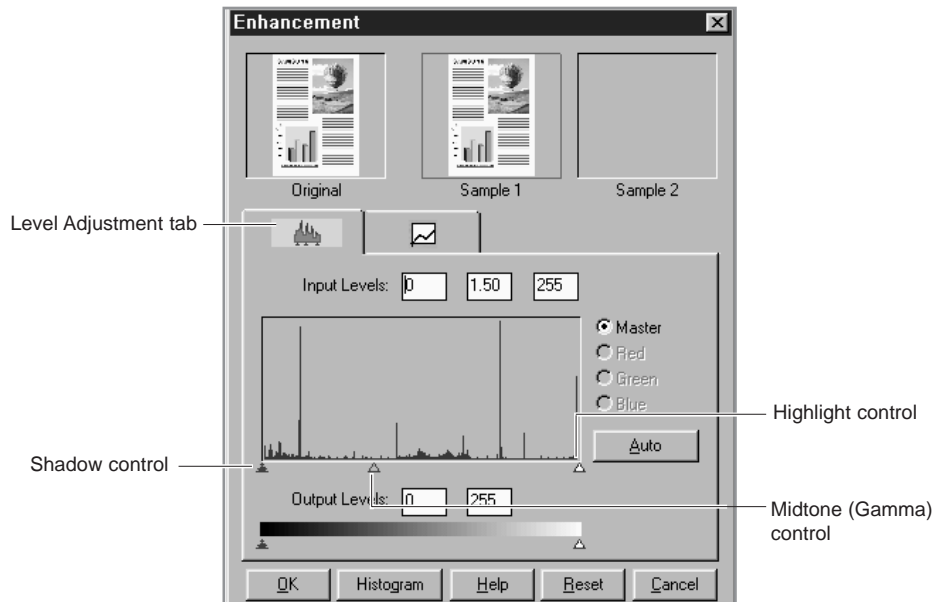
To activate the Level Adjustment or Tonal Map functions, click on the **Advanced...** button at the bottom of the Balance tab.



When this button is selected, the Level Adjustment window is displayed by default.

Level Adjustment

The Level Adjustment dialog box shows the distribution of brightness levels in your image. To adjust the histogram plot, drag the triangles, located below the horizontal bar to the desired values. The left (black) triangle changes the shadow levels. The right (white) triangle changes the highlight levels. The middle (gray) triangle controls the midtone levels.



By varying the Shadow and Highlight points you can change the relative shades and highlights of the image. The Shadow point represents the darkest value and the Highlight point is the brightest value.

The Midtone point represents the Gamma setting for your particular screen. On the histogram, the Shadow and Highlight scales are divided into 255 units.

Therefore, all pixels in the original that are darker than the current shadow point are now completely black in the enhanced image. Conversely, all pixels in the original that are brighter than the current highlight point are now completely white in the processed image.

Setting the highlight point to 200 renders all pixels greater than or equal to 200, on the original, completely white in the processed image. Similarly setting the Shadow point to 200 renders all points less than or equal to 200, on the original, completely black in the enhanced image. Photographers often refer to these effects as “high-key” or “low-key”. High-key is an image pushed to the white end, and low-key is an image pushed to the black end of the tone curve.

The Midtone is a relative measure of the gamma of your monitor. The scale for Midtone ranges from 0 to 255. The gamma curve is a geometric series. This means that at a value of 255 it tends to infinity.

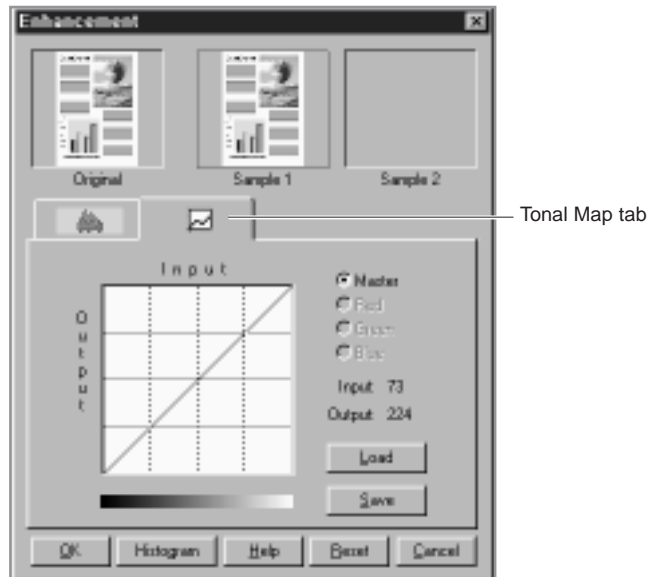
The Midtone is bound by the Shadow and Highlight terms and cannot exceed them at any time. So, if the Highlight is set to 255 and the Shadow is set to 0, a gamma of 1 is equal to a Midtone of 128. Similarly, if the Shadow is set at 200 (lower boundary) and the Highlight is set at 220 (upper boundary), a gamma of 1 is equal to a Midtone of 210.

Operation:

1. Select the **Advanced...** button on the **Balance** tab. This will display the Level adjustment window.
2. On the histogram, use the mouse key to click on the black, gray, or white triangles to make changes to the Shadow, Midtone and Highlight respectively.
3. To see the changes and compare them to the original previewed image, click on Sample 1 to see the enhanced image.
4. To make a second enhancement for comparison, click on Sample 2. Make new enhancements to the original. Compare the images of Sample 1 and 2.
5. After completing enhancement settings, click on the desired sample to choose the image
6. Click **OK** to save the changes and close the **Enhancement** dialog box. If you do not want to save the changes, click on the **Cancel** button to close the Enhancement dialog box. Click **Auto** button to allow the software to make appropriate highlight and shadow adjustments.

Tonal Map

If you select the Tonal Map tab, the following dialog box will be displayed.

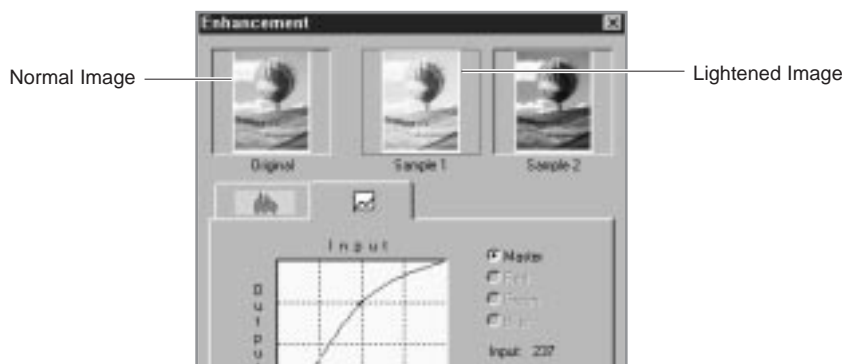


The Tonal Map is yet another way to adjust Highlight, Midtone, or Shadow levels in your images. When you open the Tonal Map dialog box, a tonal map consisting of a diagonally straight line appears. Notice that at every point on the default tonal map, the output shadow, midtone, and highlight brightness levels are equal to the input shadow, midtone, and highlight brightness levels.

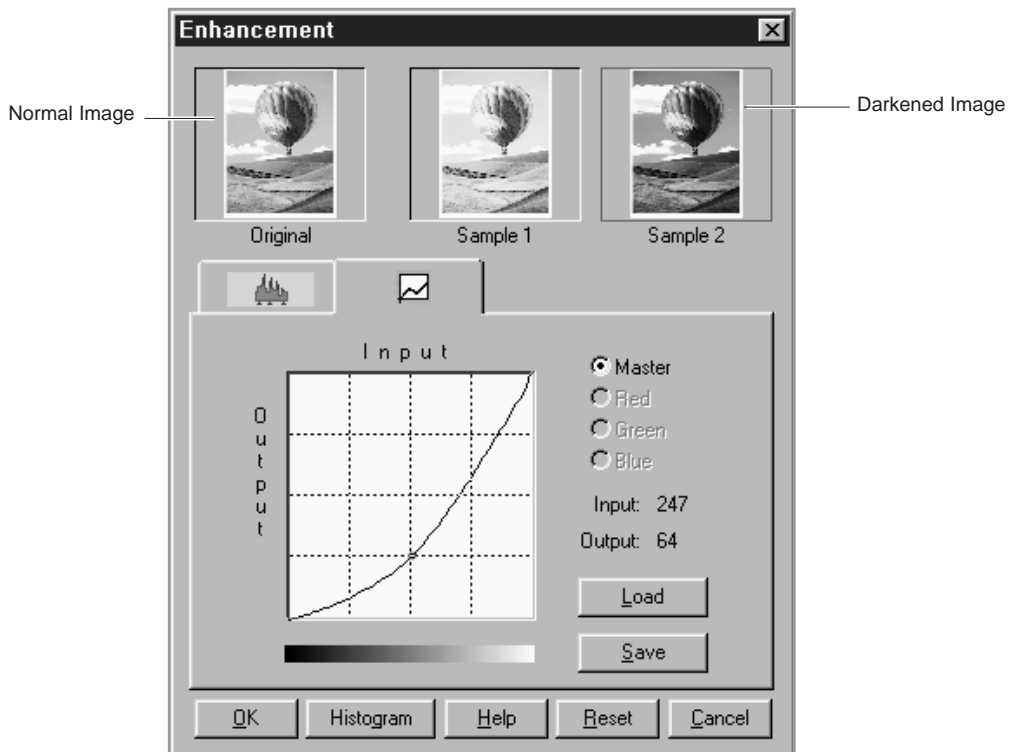
The shape and slant of the tonal map represent brightness level ratios between the input of the original image and the output image data. By clicking on the tonal map line, a hand-shaped cursor will appear which can be dragged to change the shape of the tonal map line.

The horizontal axis represents the original input brightness and the vertical axis represents the enhanced brightness. Values on either scale range from 0 to 255.

As shown in the figure below, if the curve is changed into a convex shape above the original diagonal, the enhanced image will be brighter than the original.



If the curve is changed into a concave shape below the original diagonal, the enhanced image will be darker than the original.



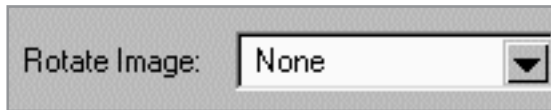
Operation:

1. Click on the Tonal Map icon in the Preview window or the **Tonal Map** tab in the Enhancement dialog box. The Tonal Map dialog box will appear.
2. Click on the Tonal Map curve, an indicator appears which can then be dragged to change the shape of the curve.
 - a) If a previously saved Tonal Map is desired, select the **Load** button. An Open dialog box appears for you to open the desired file.
 - b) Or, click on the **Reset** button to return the Tonal Map to the default diagonal as in the original.
 - c) Click the **Save** button to save the changes as a customized setting. A Save As dialog box will appear upon selection of this button. Enter the name for the customized curve and click on the **OK** button.
3. Select the **Histogram** button to see a histogram of the changes made.
4. Select the **OK** button to accept all the changes or the **Cancel** button to abandon all unsaved changes.

Effects Tab

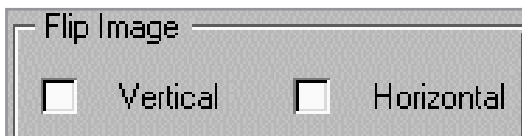
The features of this tab are used to apply various visual modifications to the scanned image.

Rotate Image



This selection provides the ability to rotate an image. The rotation mechanism rotates an image clockwise in 90° increments.

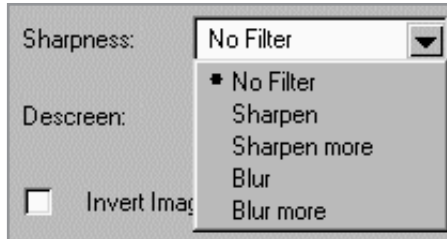
Flip Image



This selection provides the ability to flip an image. The flipping mechanism flips an image about the horizontal or vertical axis.

Sharpness

Sharpness is typically useful for high-contrast images which soften or sharpen edges and boundaries of an image.



No Filter

This is the default filter option. No filtering will take place when using this option.

Sharpen

This selection emphasizes the edges of an image. It sharpens the image boundaries by increasing the relative contrast between adjacent pixels. In general, sharpen filters should only be used when you want to accentuate the differences between one area and another.

Sharpen More

This option further emphasizes the edges of an image. This option produces a much stronger contrast than the Sharpen option.

Blur

This selection softens the image by smoothing out any sharp transitions in intensity between two adjacent pixels.

Blur More

This option further softens the image by performing the same function as the Blur option, but to a greater extent.

✓ **If you blur the image too much, you will risk losing texture and depth in the image.**

Descreen

This selection is used to eliminate moire patterns from the output image. Moire occurs as a result of differences in the screen pattern used to print document and the scanner electronics. Moire may appear as checkered patterns bands or dots. Descreen preprocessing can minimize the transfer of moire patterns into your image file.



Besides a default setting of No Descreen, The Descreen selector provides three grades of descreen preprocessing as described below.

No Descreen

No descreening.

Art print (175 lpi)

The Art print selection is used to smooth the fine dot pattern found in high quality art prints and magazines made in resolution higher than 200 dpi.

Magazine (133 lpi)

The Magazine selection is used to smooth the fine dot pattern found in glossy magazines made in resolution higher than 200 dpi.

Newspaper (88 lpi)

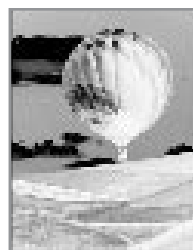
The Newspaper selection is used to smooth the coarse grain pattern commonly found in newspaper images made in resolution higher than 200 dpi.

Invert Image

This function inverts all the tone values, providing a photographic negative of the original. This effect is similar to using the Tonal Map to tonally invert the image.



Normal image



Invert image

Preview Window

After adjusting the settings in the Scanner Control window, choose any one of the tools in the Preview window to further enhance the image. The following is detailed information about the tools available in the Preview window.

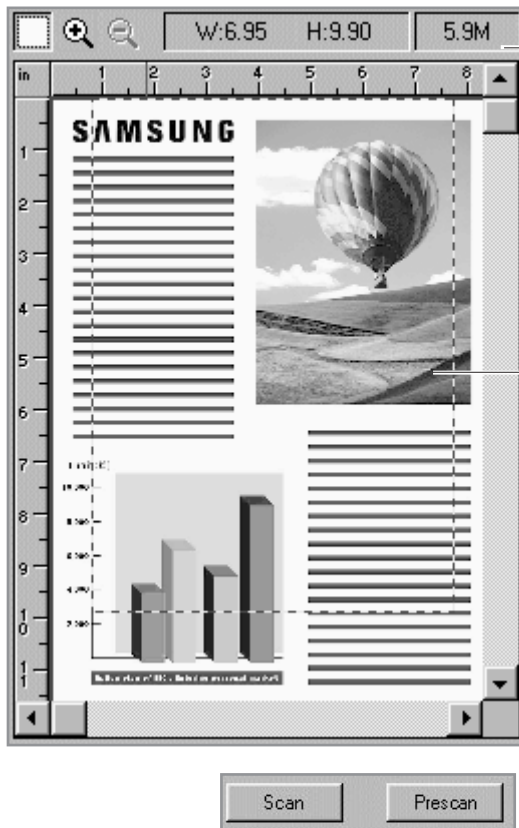


Image Control tools

For information, see page 3.18.

Preview window

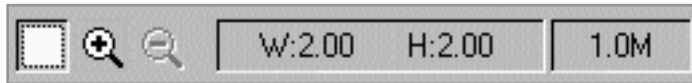
Used to view the prescanned document.

Any changes made to the document are seen here.

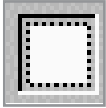
Prescan and Scan buttons

For information, see page 3.20.

Image Control Tools



The Image Control tools are used to control the image displayed in the preview window. The functions of these tools are described below.



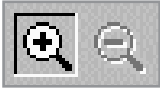
Frame Tool

After a preview image has been created, you can define the boundaries of the area to be included in your final scan by using the Frame tool.

Use the Frame tool to select a rectangular portion (selection frame), or select the entire preview screen, for the final scan boundaries. When you select the **Scan** button, only the area within the selection frame will be included in the final scan.

To use the Frame tool:

1. Select the Frame tool by clicking the Frame tool icon.
 2. Drag the cursor to the preview area and release the mouse button when the selection frame is in the desired position.
 3. To adjust the selection frame size or shape, drag any edge or corner of the frame in or out. Alternatively, hold down the **Shift** key and the mouse key on one of the sides of the frame and then move the cursor accordingly. This action will contract or expand the entire frame.
 4. To move the selection frame to a different area of the image without changing its size or shape, place the cursor within the selection frame and drag it to the desired location.
 5. To create an entirely new selection frame, place the cursor outside the existing selection frame and drag diagonally. The first selection frame will disappear while the second one remains.
- ✓ If you hold down the **Shift** key and drag the mouse diagonally, the sides of the selection frame will resize proportionally.



Zoom In and Out Tools

The Zoom In and Out tools allow you to zoom in or out on an image within the Preview window; zooming in (the + sign appears on the zoom cursor) enlarges the view of the active image so that you can work on small details in an image. Zooming out (the - sign appears on the zoom cursor) reduces the view of the active image.

To use the Zoom In tool:

1. Select the Zoom tool by clicking the Zoom In tool icon.
2. Drag the cursor to the preview area. The cursor will change to a magnifying glass whenever it is in the preview space.
3. Zoom in (magnify an area) by positioning the cursor on an area of interest in the preview area and clicking the left mouse button. The preview area will be doubled in size. Click again and the area will again be enlarged by a factor of 100%. By repeating this process, you can enlarge the preview display of the image up to 800% of its original size.

As an alternative to the method outlined above, select the Zoom tool and then, while holding the mouse key down, drag the cursor over the area you want to enlarge. A solid frame, defining the area of enlargement, will appear while the mouse key is being held down. Upon release of the mouse key, the defined area will be enlarged.

4. Use the scroll bars to view hidden areas of the displayed preview image.

To use the Zoom Out tool:

1. Select the Zoom Out tool by clicking the Zoom Out tool icon.
2. Drag the cursor to the preview area. The cursor will change to a magnifying glass whenever it is in the preview space.
3. Zoom out by positioning the cursor in the preview area and clicking the left mouse button.

✓ **The Zoom In and Out tools do not affect the image produced by the Scan control. It only affects the Preview display.**

Width and Height Indicators



The Width and Height indicators will display the width and height of the frame defined with the Frame tool.

File Size Indicator



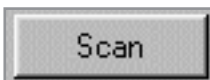
The file size indicator will display the file size that will result for the scanned image defined with Frame tool.

Prescan Button



The Prescan button is used to obtain a low resolution preview of the document. The prescanned document will appear in the Preview Window.

Scan Button



The Scan button is used to obtain the final scan of the document after all of the enhancement features have been applied to the prescanned document.

When Scan is selected, the scanned image does not appear in the Preview Window. It appears in the TWAIN compliant application from which the scan was originated.

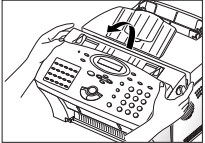
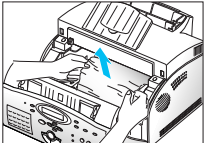


Troubleshooting

Fixing Problems

Below are the problems you can solve by yourself. If not, call for service.

Printer Problems

Symptom	Cause and Solution
The printer does not print.	<ul style="list-style-type: none">• The printer cable is not connected properly. Check the printer cable connection.• The printer cable is defective. Swap the cable with one known to work.• The port setting is incorrect. Check the Windows printer settings to make sure that the print job is being sent to the correct port (for example, LPT1).• The image cartridge is not installed properly. Remove and reinsert the image cartridge.• The printer may be configured incorrectly. Check the application to make sure that all print settings are correct.• The printer driver may be incorrectly installed. Uninstall the MFP driver and reinstall the MFP driver. Then try printing a test page. Refer to 'Uninstalling SmarThru Software' on page 1.6• A paper jam has occurred. Remove the jammed paper. If there is resistance to the paper, and it does not move immediately when you pull, or if the paper is jammed inside the machine, stop pulling. <ol style="list-style-type: none">1. Pulling the cover release button toward you, open the cover, then remove the image cartridge.2. Gently pull the paper toward you. Check that there is no other paper in the printer.  

Printer Problems (Continued)

Symptom	Cause and Solution
The paper is not fed into the printer.	<ul style="list-style-type: none"> • Paper has not been inserted correctly. Remove and reinsert the paper correctly (refer to 'Loading Paper' on page 1.13). • There is too much paper in the automatic paper feeder. Remove some of the paper from the automatic paper feeder.
Half of the page is blank.	<ul style="list-style-type: none"> • The page layout is too complex. Simplify the page layout and remove any unnecessary graphics from the document if possible. • The page orientation setting may be incorrect. Change the page orientation in the Printer Properties dialog box. • The paper size and the software paper size settings do not match. Insert the correct paper into the printer or change the software paper size settings. • Scaling may be set to less than 100%. Change the Scaling setting in the Printer Properties dialog box. • The printer cable specifications may be incorrect. Use or replace the cable with an IEEE-1284 rated cable.
The printer prints the wrong data, or it prints incorrect characters.	<ul style="list-style-type: none"> • The printer cable might not be connected properly. Check the printer cable connection. • There may be a problem with the printer driver software. Exit Windows and reboot the computer. Turn the printer off and then back on again. • The printer cable specifications may be incorrect. Use or replace the cable with an IEEE-1284 rated cable.
The paper keeps jamming.	<ul style="list-style-type: none"> • There is too much paper in the automatic paper feeder. Remove some of the paper from the automatic paper feeder. (If printing onto transparencies, or labels, insert them one at a time in the manual feeder.) • The paper setting method may be incorrect. If printing onto envelopes, insert the envelopes so that there is a gap of approximately 1 mm (1/32") between the left and right edge of the envelopes at the paper guide.

Symptom	Cause and Solution
Printing is too slow.	<ul style="list-style-type: none"> • If using Windows 3.x, Print Manager may be disabled. From the Control Panel Printers menu, check the Use Print Manager box. • If using Windows 3.1x, the Background Printing item in the Option menu of Print Manager may be set incorrectly. Select Background Printing from the Option menu in the Print Manager. • If using Windows 95/98, the Spooling Setting may be set incorrectly. From the Start menu, select Settings and Printers. Click your printer icon with the right mouse button, select Properties, click the Details tab, and then click the Spool Settings button. Select the desired spool setting from the available choices. • If you are using Windows NT, the Scheduling setting may be set incorrectly. From the Start menu, select Settings and Printers. Click your printer icon with the right mouse button, select Properties, click the Scheduling tab. Then, select the desired scheduling setting from the available choices.

Print Quality Problems

Symptom	Cause and Solution
White page or printout too light to read	<ul style="list-style-type: none"> • Toner is low or empty. Replace the image cartridge.
Irregular faded patches of print	<ul style="list-style-type: none"> • There is a paper quality problem. Use only paper that meets the specifications required by the printer. • Toner may be unevenly distributed. Remove the image cartridge and shake it gently to evenly distribute the toner. Then replace the image cartridge.

Symptom	Cause and Solution
Black staining	<ul style="list-style-type: none"> • There is a paper quality problem. Use only paper that meets printer specifications. • An image cartridge from another printer has been installed. Always use the same image cartridge with the same printer. Using a cartridge that has already been used in another printer may not give satisfactory results.
Character voids	<ul style="list-style-type: none"> • The paper may be too dry. Try printing with a different batch of paper.
Background scatter	<ul style="list-style-type: none"> • The paper may be too damp. Try printing with a different batch of paper. Do not open packages of paper until necessary so that the paper does not absorb too much moisture from the air. • Printing over uneven surfaces. If printing onto envelopes, change your printing layout to avoid printing over areas that have overlapping seams on the reverse side.
Missing characters	<ul style="list-style-type: none"> • The paper may be too damp. Try printing with a different batch of paper. Do not open packages of paper until necessary so that the paper does not absorb too much moisture from the air.
Back of printout dirty	<ul style="list-style-type: none"> • The transfer roller may be dirty. Print a few blank pages to clean the transfer roller.
Incorrect fonts	<ul style="list-style-type: none"> • True Type fonts may be disabled (Windows 3.x). Use the Fonts dialog box in the Control Panel to enable True Type fonts.
Faded graphics	<ul style="list-style-type: none"> • Toner may be low. Remove the image cartridge and shake it gently to evenly distribute the toner. Then replace the image cartridge. Have a spare image cartridge in preparation for the toner running out.

Others Problems

Symptom	Cause and Solution
<ul style="list-style-type: none"> • There was an error writing to LPT1: for the printer: The parameter is incorrect. • COM port initialization failed. Check COM port parameters in Modem properties dialog • Modem initialization failed. Switch on the modem and check cable connection. • Device can't be set to the H/W mode you want. • Port is disabled. Check if the port is properly connected, or power is on then restart your computer • TWAIN error occurred • [Critical]: TWAIN is not available. • There were critical errors. Program will not continue. 	<ul style="list-style-type: none"> • While an application use LPT1 or SmarThru Fax Port, the other application can't use them concurrently. So if "Automatically answer for incoming calls after (rings):" option is checked of Fax Gate Properties, You can't scan images or print documents. If you want to scan or print, uncheck the option and restart SmarThru. If "Automatically answer for incoming calls after(rings):" option is not checked, one of printing, scanning, faxing may be already processing and another job try to process. Then cancel one of them, redo canceled job after another job is finished. • The MFP does not allow dual job, so printing, scanning faxing can't process concurrently. Cancel and redo later job after the MFP finishes current processing.
<p>To install the MFP driver in network environment</p>	<ul style="list-style-type: none"> • Your MFP driver supports only Microsoft network such as Windows 3.x, Windows 95/98 and Windows NT 4.0. • You should install the driver onto both PCs (Server and client) by using the CD-ROM supplied.

