



Contact SAMSUNG WORLD WIDE
If you have any questions or comments relating to Samsung products, please contact the SAMSUNG customer care center.

Country	Customer Care Center ☎	Web Site	Address
CANADA	1-800-SAMSUNG (726-7864)	www.samsung.com/ca (English) www.samsung.com/ca_fr (French)	Samsung Electronics Canada Inc., Customer Service 55 Standish Court Mississauga, Ontario L5R 4B2 Canada
U.S.A	1-800-SAMSUNG (726-7864)	www.samsung.com	Samsung Electronics America, Inc. 85 Challenger Road Ridgefield Park, NJ 07660



Important Safety Instructions

SAMSUNG

Warning! Important Safety Instructions

CAUTION

RISK OF ELECTRIC SHOCK DO NOT OPEN

CAUTION: TO REDUCE THE RISK OF ELECTRIC SHOCK, DO NOT REMOVE COVER (OR BACK). THERE ARE NO USER SERVICEABLE PARTS INSIDE. REFER ALL SERVICING TO QUALIFIED PERSONNEL.



This symbol indicates that high voltage is present inside. It is dangerous to make any kind of contact with any internal part of this product.



This symbol indicates that important literature concerning operation and maintenance has been included with this product.

- The slots and openings in the cabinet and in the back or bottom are provided for necessary ventilation. To ensure reliable operation of this apparatus, and to protect it from overheating, these slots and openings must never be blocked or covered.
 - Do not place this apparatus in a confined space, such as a bookcase, or built-in cabinet, unless proper ventilation is provided.
 - Do not place this apparatus near or over a radiator or heat register, or where it is exposed to direct sunlight.
 - Do not place vessels (vases, etc.) containing water on this apparatus, as this can result in a fire or electric shock.
- Do not expose this apparatus to rain or place it near water (near a bathtub, washbowl, kitchen sink, or laundry tub, in a wet basement, or near a swimming pool, etc.). If this apparatus accidentally gets wet, unplug it and contact an authorized dealer immediately.
- This apparatus uses batteries. In your community, there might be environmental regulations that require you to dispose of these batteries properly. Please contact your local authorities for disposal or recycling information.
- Do not overload wall outlets, extension cords, or adaptors beyond their capacity, since this can result in fire or electric shock.
- Power-supply cords should be placed so that they are not likely to be walked on or pinched by items placed upon or against them. Pay particular attention to cords at the plug end, at wall outlets, and the point where they exit from the apparatus.
- To protect this apparatus from a lightning storm, or when it is left unattended and unused for long periods of time, unplug it from the wall outlet and disconnect the antenna or cable system. This will prevent damage to the set due to lightning and power line surges.

- Before connecting the AC power cord to the DC adaptor outlet, make sure the voltage designation of the DC adaptor corresponds to the local electrical supply.
- Never insert anything metallic into the open parts of this apparatus. Doing so may create a danger of electric shock.
- To avoid electric shock, never touch the inside of this apparatus. Only a qualified technician should open this apparatus.
- Make sure to plug the power cord in until it is firmly seated. When unplugging the power cord from a wall outlet, always pull on the power cord's plug. Never unplug by pulling on the power cord. Do not touch the power cord with wet hands.
- If this apparatus does not operate normally - in particular, if there are any unusual sounds or smells coming from it - unplug it immediately and contact an authorized dealer or service center.
- Be sure to pull the power plug out of the outlet if the TV is to remain unused or if you are to leave the house for an extended period of time (especially when children, elderly or disabled people will be left alone in the house).
 - Accumulated dust can cause an electric shock, an electric leakage, or a fire by causing the power cord to generate sparks and heat or the insulation to deteriorate.
- Be sure to contact an authorized service center for information if you intend to install your TV in a location with heavy dust, high or low temperatures, high humidity, chemical substances, or where it will operate 24 hours a day such in an airport, a train station, etc. Failing to do so may cause serious damage to your TV.
- Use only a properly grounded plug and wall outlet.
 - An improper ground may cause electric shock or equipment damage. (Class I Equipment only.)
- To turn this apparatus off completely, you must disconnect it from the wall outlet. Consequently, the wall outlet and power plug must be readily accessible at all times.
- Do not allow children to hang on the product.
- Store the accessories (battery, etc.) in a location safely out of the reach of children.
- Do not install the product in an unstable location such as a shaky shelf, a slanted floor, or a location exposed to vibration.
- Do not drop or strike the product. If the product is damaged, disconnect the power cord and contact a service center.
- To clean this apparatus, unplug the power cord from the wall outlet and wipe the product using a soft, dry cloth. Do not use any chemicals such as wax, benzene, alcohol, thinners, insecticide, air fresheners, lubricants, or detergent. These chemicals can damage the appearance of the TV or erase the printing on the product.
- Do not expose this apparatus to dripping or splashing.
- Do not dispose of batteries in fire.
- Do not short-circuit, disassemble or overheat the batteries.
- There is danger of an explosion if you replace the batteries used in the remote with the wrong type of battery. Replace only with the same or equivalent type.
- **WARNING - TO PREVENT THE SPREAD OF FIRE, KEEP CANDLES OR OTHER OPEN FLAMES AWAY FROM THIS PRODUCT AT ALL TIMES.**



Contents

Basic Features

- 7 Using the Remote Control
 - 8 Inserting the Batteries (AAA X 2)
- 9 Using the Smart Touch Control
 - 10 Inserting the Batteries (AAA X 2)
 - 10 Connecting to the TV
 - 11 Low Battery Power Warning
- 11 Using the touch pad
 - 12 Changing Channels by Entering Numbers
 - 12 Show Status and Notification Banner
 - 12 Recommended
 - 12 History
 - 13 Searching
 - 13 Using the Virtual Remote Control
 - 13 Changing the Position of the Virtual Remote Panel
- 14 Turning on the TV
 - 14 Built-in TV Camera
- 15 Switching Between Video Sources
- 16 Universal Remote Setup

Viewing the e-Manual

- 17 Viewing the e-Manual
 - 17 Scrolling a Page
 - 18 Using the Top Icons
 - 18 Returning to the Home Page
 - 18 Searching the Index
 - 18 Searching Pages
 - 18 Closing the e-Manual
 - 18 Jumping to a Menu Item
 - 18 Updating the e-Manual

Network Configuration

- 19 Connecting to a Network
 - 19 Network Connection - Wireless
 - 19 Wireless Network Precautions
 - 19 Network Security Protocols
 - 20 Network Connection - Wired
- 20 Samsung Multi View
 - 21 Using Samsung Multi View

3D Basics

- 22 Samsung Multi View 3D Glasses
 - 23 Using the 3D glasses

Troubleshooting and Other Information

- 27 What is Remote Support?
- 27 Troubleshooting
- 29 Eco Sensor and Screen Brightness
- 29 Assembling the Cable Manager
- 29 Maintenance

Specifications

- 30 Specifications
- 30 TV Upgrade using One Connect
 - (sold separately)
- 31 Licenses

Guides

- 31 Warranty Information
- 34 Regulatory Compliance Statements
 - (For 3D Active Glasses)
- 35 SAMSUNG BRAND PRODUCTS
 - 35 LIMITED WARRANTY TO ORIGINAL PURCHASER


Figures and illustrations in this User Manual are provided for reference only and may differ from the actual product appearance. Product design and specifications may change without notice.

Features of your new TV

- **3D:** This new feature enables you to view 3D content.

- **SMART HUB:**

This TV features Smart Hub, a multi-purpose entertainment and family center. With Smart Hub, you can surf the web, download applications, and stay in touch with family and friends through social networking services. In addition, you can view or play photo, video, and music files stored on external storage devices.

Press the  button to launch Smart Hub. Choose a service using the icons displayed in the top part of the screen.

Smart Hub services and functionality include:

Social: Watch the latest YouTube videos. View the latest videos you or your friends have posted on Facebook or Twitter. Make video calls to friends using the TV's camera.

Apps: Samsung Apps offers an extensive collection of free and paid news, sports, weather, and gaming content you can download directly to and enjoy on your TV.

On TV: Check a listing of programs that are currently airing or are scheduled to air.

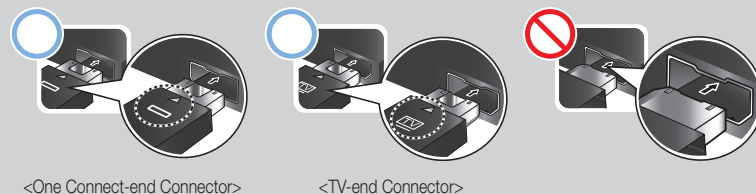
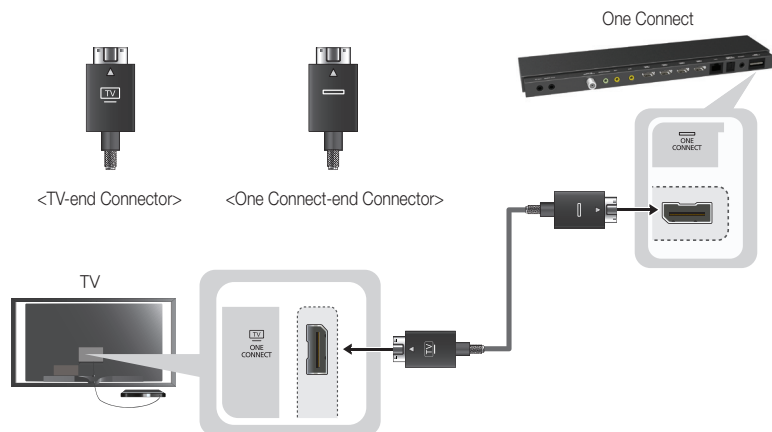
Movies & TV Shows: Purchase and watch movies and series without a separate external device.

Photos, Videos & Music: Play back photo, video, and music files from an external storage device.

- **Anynet+ (HDMI-CEC):** Lets you control all connected Samsung devices that support Anynet+ with your Samsung TV's remote.
- **e-Manual:** Provides a detailed, on-screen user's manual built into your TV.
- **SMART Interaction:** Lets you access and control menu options and functions using motions.
- **Device Manager:** Lets you connect a USB or Bluetooth keyboard and mouse to your TV and use the keyboard or mouse to surf the web, key in data, select menu settings, and more.
- **MHL & Screen Mirroring:** Displays mobile device screens on your TV using a wired or wireless connection.

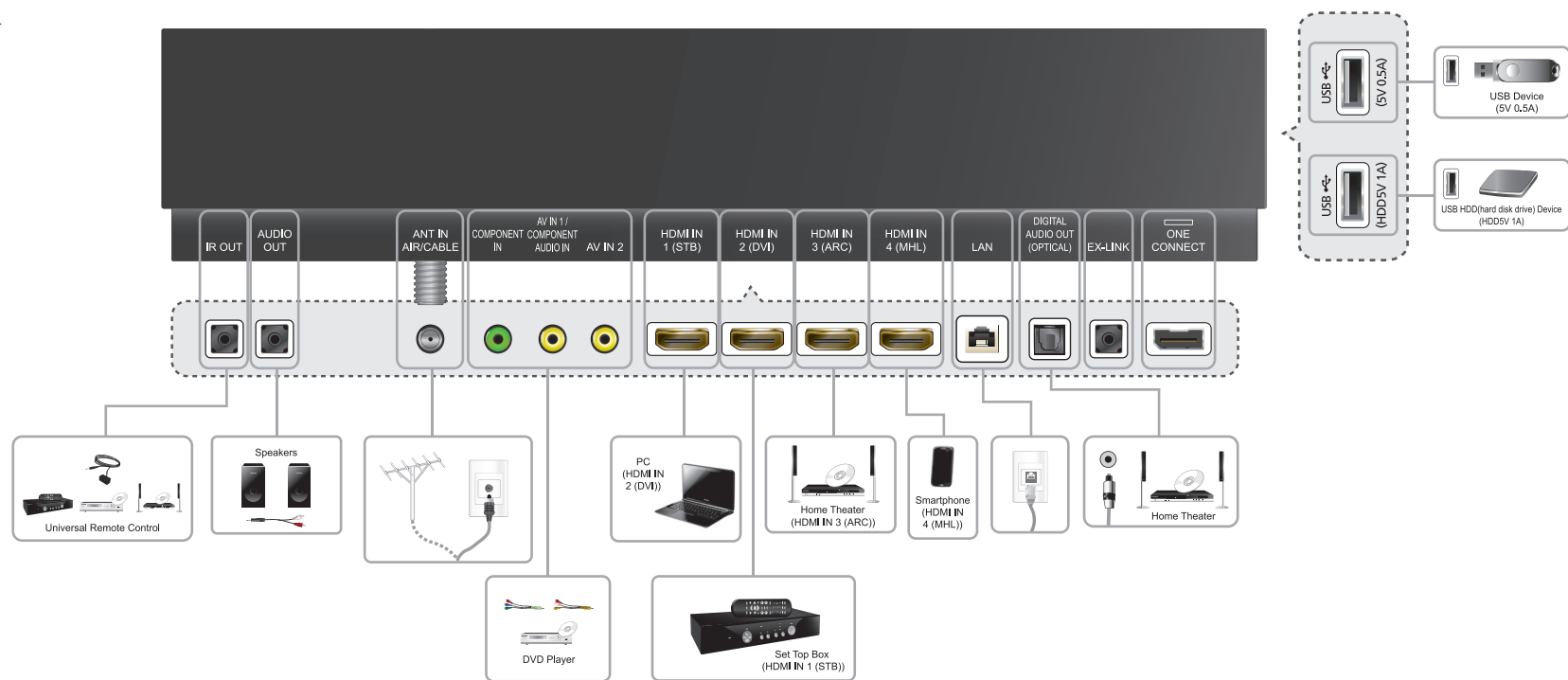
Connecting the TV to One Connect

Your TV comes with a One Connect panel. The One Connect panel lets you connect external devices such as Blu-ray players and cable boxes to your TV. You must connect the One Connect to your TV using the One Connect cable before connecting any external devices to the One Connect. The One Connect cable has two different ends, one for the TV and one for the One Connect panel. The TV end has a small TV icon on its surface. See the diagrams below.




⚠ The connectors at both ends of the One Connect cable are different from each other in shape. When you connect the One Connect cable to the TV, make sure that the right connector is plugged into the TV. Connecting the One Connect cable incorrectly can damage both the TV and the One Connect panel.

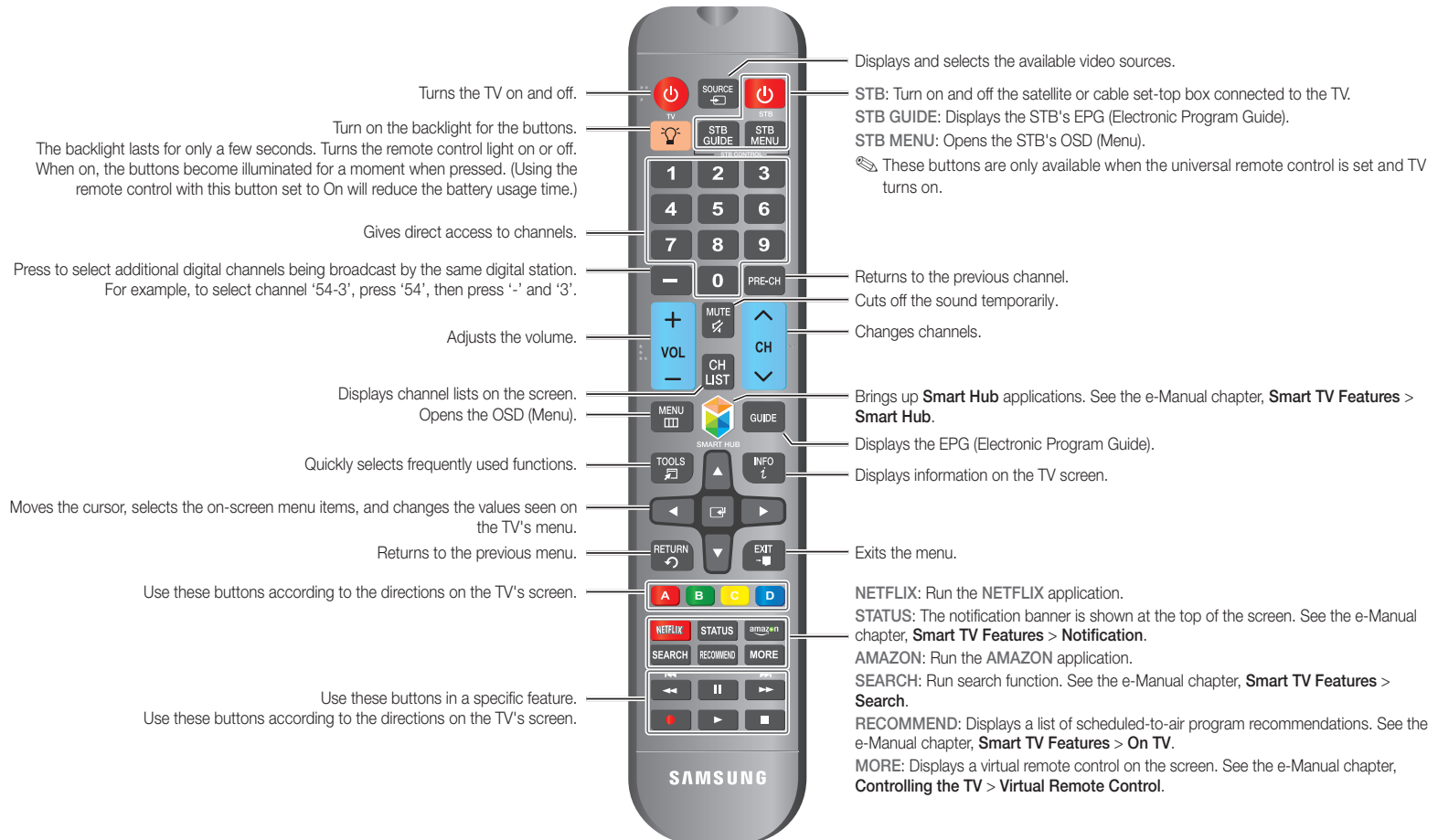
One Connect - Front



Using the Remote Control

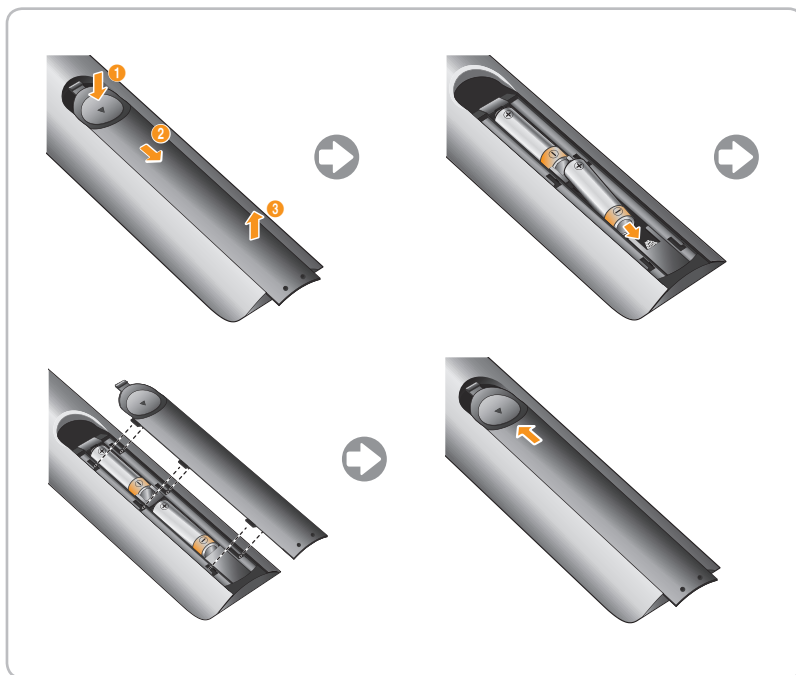
Learn where the function buttons are on your remote. Especially note these: **SOURCE**, **MUTE**, **VOL**, **CH**, **MENU**, **TOOLS**, **INFO**, **CH LIST**, **RETURN**, and **EXIT**.

 This remote control has Braille points on the Power, Channel, and Volume buttons and can be used by visually impaired persons.



Inserting the Batteries (AAA X 2)

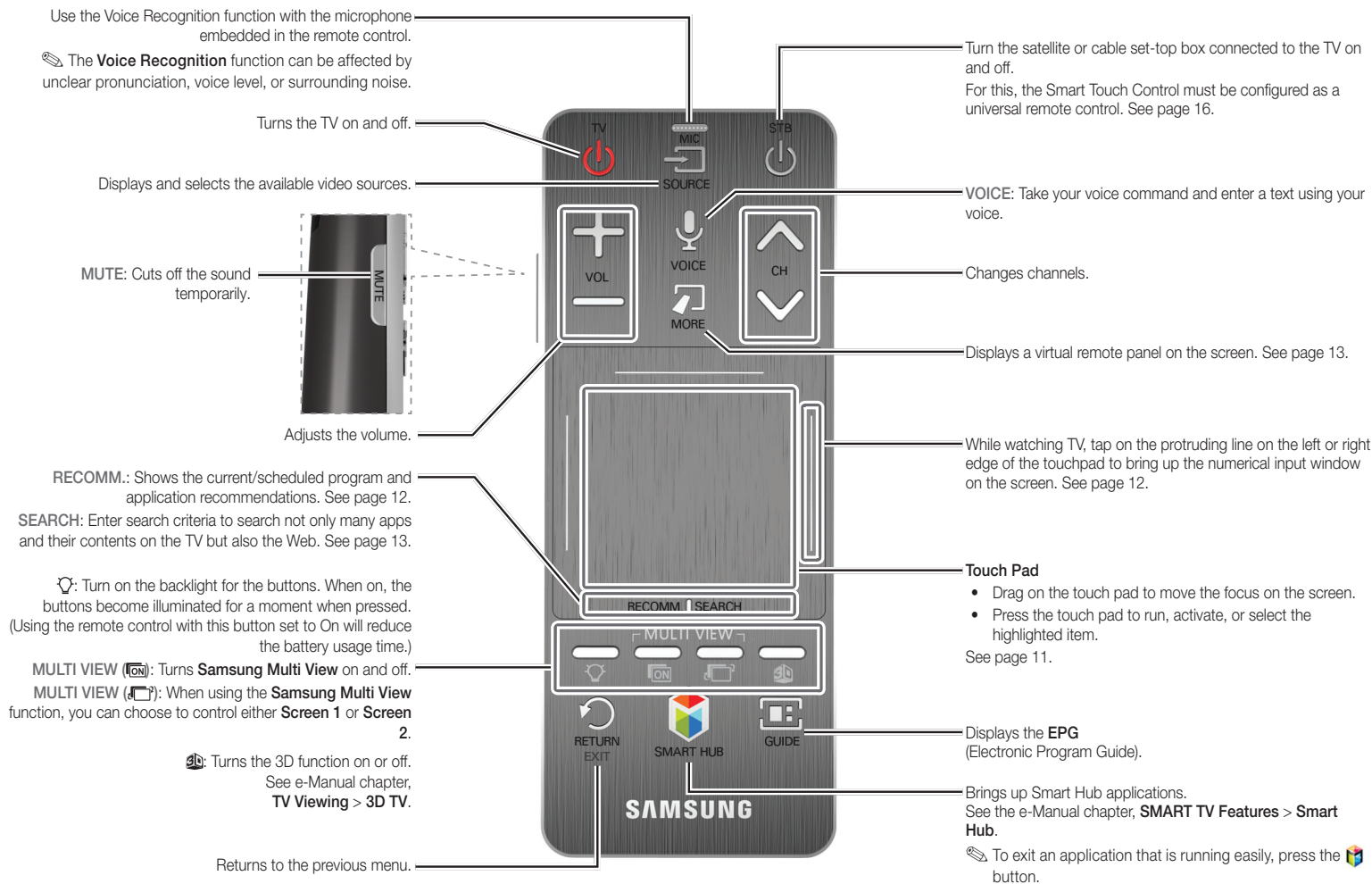
Match the polarity of the batteries to the symbols in the battery compartment.



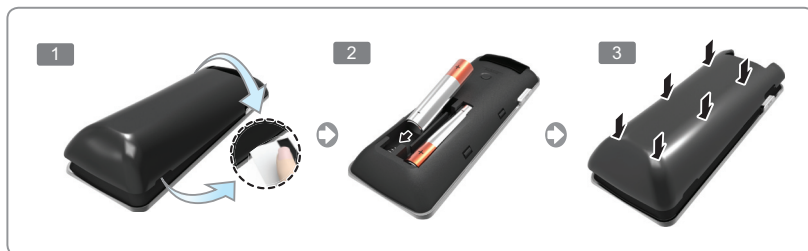
NOTE


- Use the remote control within 23 feet of the TV.
- Bright light may affect the performance of the remote control. Avoid using when near special fluorescent lights or neon signs.
- The color and shape may vary depending on the model.

Using the Smart Touch Control




Inserting the Batteries (AAA X 2)

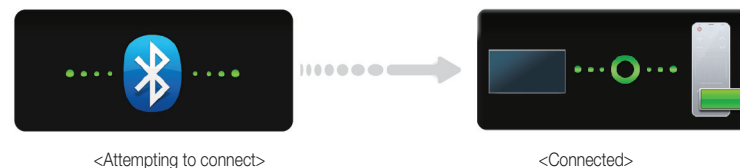


1. Insert a plastic card into the notch in the battery cover, and then rotate the card to loosen the battery cover. Carefully pull the cover up to remove it completely.
 Check the location of the battery cover notch. The notch's location may vary depending on the type of Smart Touch Control provided with the product.
2. Insert 2 AAA batteries, making sure to align the positive and negative ends correctly.
3. Align the battery cover with the back of the remote control, and then press down along the edges until it is completely attached to the remote control.

Connecting to the TV

To operate the TV using a Smart Touch Control, you must first pair it to the TV via Bluetooth. Note that the Smart Touch Control will only work with the paired Samsung TV.

1. To turn on the TV, point the Smart Touch Control at the remote control receiver of the TV and press the  button. The remote control receiver's location may vary depending on the model.
2. A Bluetooth icon will appear at the bottom left of the screen as shown below. The TV will then attempt to connect to the Smart Touch Control automatically.



3. If pairing is successful, the TV displays a small green circle between graphics representing the TV and the Smart Touch.
4. If the Smart Touch does not pair:
 - a. Remove the battery cover.
 - b. Aim the Smart Touch at the TV's remote control receiver.
 - c. Use a pen tip to press and release the pairing button on the back of the Smart Touch. (See page 11 for its location.)
 - d. In a few seconds, you should see the Bluetooth icon described in Step 2, and then the Smart Touch should pair.
- The first time you turn on your TV, it will immediately start the initial setup.

Reconnecting the Smart Touch Control

If you need to reestablish the connection between the TV and the Smart Touch Control, point the Smart Touch at the remote control sensor of the TV, and then press the pairing button at the back of the Smart Touch Control.



<The Smart Touch Control's pairing button>

The pairing button can be accessed by removing the Smart Touch Control's battery cover. Pressing the pairing button automatically reestablishes the connection between the Smart Touch Control and the TV.

Low Battery Power Warning

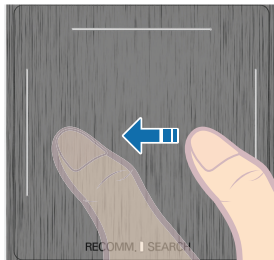
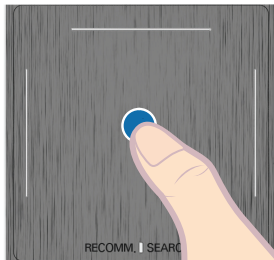
When the Smart Touch Control's battery power becomes low, the indicator (shown in the illustration below) appears on the bottom left of the TV screen. Replace the old batteries with new alkaline ones.



<Low battery alarm window>

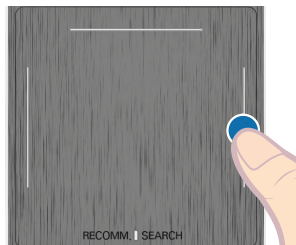
Using the touch pad

Use the touch pad to implement various commands. Navigate to **Tutorial (System > Device Manager > Smart Touch Control Settings > Tutorial)** in the TV's menu to view an on-screen guide for using the Smart Touch Control.

Dragging	Pressing
 An illustration showing a finger dragging across a touch pad. A blue arrow indicates the direction of movement. The touch pad has a 'RECOMM.' and 'SEARCH' label.	 An illustration showing a finger pressing down on a touch pad. A blue circle highlights the point of contact. The touch pad has a 'RECOMM.' and 'SEARCH' label.
Drag on the touch pad to move the focus, pointer, or highlight in the direction the finger is dragging.	Press the touch pad to select the item highlighted or in focus. When watching TV, press and hold the touch pad for 2 seconds to displays the channel list. On some apps, pressing and holding the touch pad for 2 seconds displays a list of functions available for the app.

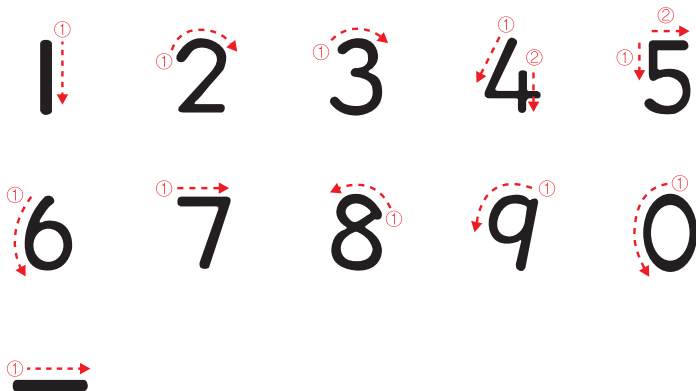
Changing Channels by Entering Numbers

While watching TV, tap the protruding line on the left or right edge of the touch pad to bring up the numerical input window on the screen. Use your finger to trace the number of the channel you want to watch on the touch pad. The number is displayed on the screen, and then the TV switches to the corresponding channel. Note that the TV may not recognize the number you have entered if you don't trace the number properly. Refer to the guide below to ensure that the TV recognizes your numerical entries accurately.



Numerical Input Guide

Refer to the diagrams below when entering numerical values. The TV may not recognize your entries if you do not follow the sequences shown below.



Show Status and Notification Banner

Press the **MORE** button on the Smart Touch Control to display the virtual remote control, and then select the **STATUS** bar above the panel. The Status and Notification banner appears at the top of the screen. The Status and Notification banner provides information about your Samsung account, the status of your network connection, and displays important notifications about your TV and Samsung services. For more information about using the Status and Notification banner, refer to **e-Manual > Smart Features > Status and Notification**.

Recommended

Press the **RECOMM. / SEARCH** button below the touch pad of your remote, and then select **Recommended** from the list that appears on bottom of the screen. The TV displays recommended programs that are currently being aired and recommended programs that are scheduled for airing. It also displays recommended applications.

Select a program that is currently being aired to jump to that program and channel.

Select a program that is scheduled for airing to set up a Scheduled Viewing.

See **e-Manual > SMART TV Features > On TV** for more information.

Select an application to launch the application. If the application you select is not installed on the TV, the TV launches Samsung Apps so that you can install it.

See **e-Manual > Smart Features > Apps > Samsung Apps** for more information.

History

Press the **RECOMM. / SEARCH** button, and then select **History** from the list displayed at the bottom of the screen. An interactive list of recently accessed channels, media content, and applications appears on the screen.

Searching

Press the **RECOMM. / SEARCH** button on the Smart Touch Control. A list appears at the bottom of the screen. Press the **RECOMM. / SEARCH** button again. A keypad appears on the screen. Enter search criteria to search not only many apps and their contents on the TV but also the Web.

Refer to **e-Manual > SMART TV Features > Searching** for more information.

Using the Virtual Remote Control

Press the **MORE** button to display the virtual remote panel on the TV screen. The virtual remote panel consists of the number panel, a playback control panel, and the quick access panel. Use the touch pad to highlight and select icons, numbers, and buttons on the panels.

 The displayed virtual remote panel on the TV screen may differ depending on your country.



Changing the Virtual Remote Panel

You can change which virtual remote panel is displayed on the TV screen. To shift between panels, move the focus highlight beyond the left or right edge of the displayed panel.

To change the panel more quickly, use the left/right scroll function on the touch pad.

Changing the Position of the Virtual Remote Panel

To change the position of the panel, press and hold the touch pad for one second.

Using the Number Panel

Use the number panel to enter numbers on a keypad screen or webpage or to change the channel while watching TV. Changing the channel using the number pad leaves a record, allowing you to easily return to previous channels.

Using the Playback Control Panel



Use the playback control panel to pause, rewind, fast forward, skip to the next file, select a function with the **A**, **B**, **C**, **D** buttons, and much more while enjoying media content.

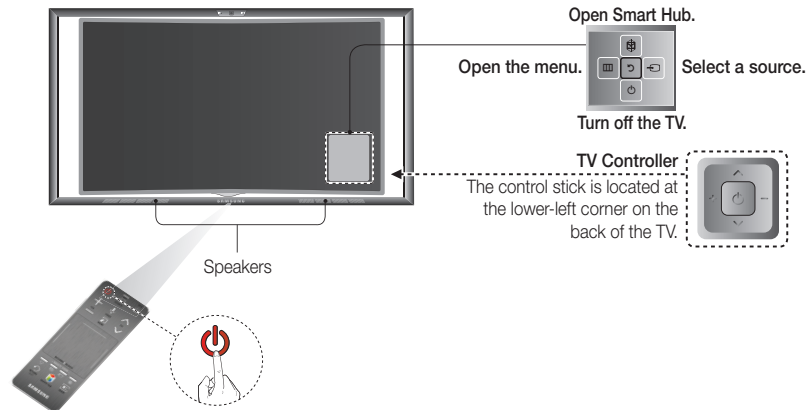
Using the Quick Access Panel

Use the buttons on the quick access panel to bring up the TV's **INFO**, **TOOLS** or **e-Manual** screens. Note that the buttons that appear may vary depending on the operating mode of the Smart Touch Control (with the TV only, as a universal remote, etc.).

Turning on the TV

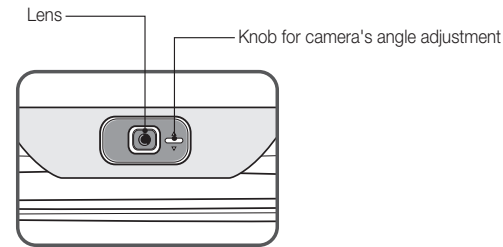
Turn on the TV using the  button on the Smart Touch Control or TV panel.

-  The first time you turn on your TV, it will immediately start the initial setup.
-  The product color and shape may vary depending on the model.



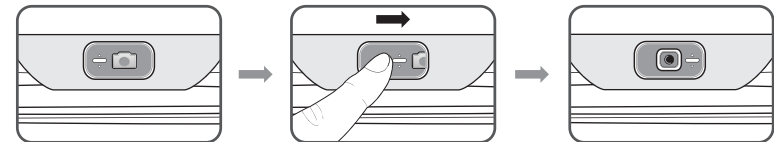
Built-in TV Camera

This TV features a built-in TV camera and microphone that you can use for the Motion Control, Voice Recognition, and Face Recognition features. You can also use the camera's angle adjustment knob to change the camera's viewing angle.



Extending the TV Camera

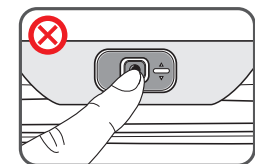
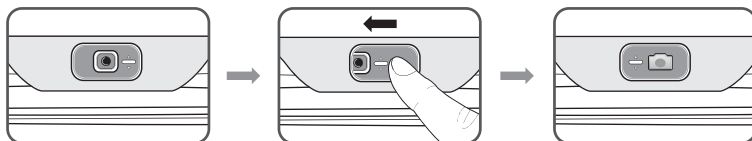
To use the TV camera, you must first extend it. To extend the camera, push the camera cover on the angle adjustment bar to the right as shown in the diagram.



Retracting the Camera

If you are not using the TV camera, keep it retracted inside the TV. The Motion Control and Face Recognition features cannot be used while the TV camera is in the retracted state, but Voice Recognition will still be available.

Push the camera to the left as shown in the diagram. Be careful not to touch the camera lens.



⚠ Do not touch the lens while operating the TV camera. You can leave fingerprints that may affect the image quality. If the lens gets dirty, clean it using a soft piece of cloth.

Switching Between Video Sources

Press the **SOURCE** button to switch between devices connected to the TV.

For example, to switch to a game console connected to the second HDMI connector, press the **SOURCE** button. From the **Source** list, select **HDMI2**. The connector names may vary depending on the product.

Select **Tools** at the upper-right corner of the source screen to access the following functions.

- **Edit Name:** Lets you associate a device name to an input source.

You can select the following device names in the **Edit Name** option:

VCR / DVD / Cable STB / Satellite STB / PVR STB / AV Receiver / Game / Camcorder / PC / DVI PC / DVI Devices / TV / IPTV / Blu-ray / HD DVD / DMA

To associate a device name to an input source, follow these steps:

1. Select **Tools** in the upper right corner of the source screen.
2. Select **Edit Name**.
3. Find the input source you want in the **Source** list (HDMI1, HDMI2, Component, etc.).
4. Select the blank field next to the input.
5. In the device name list that appears, select the name of the device attached to the input.

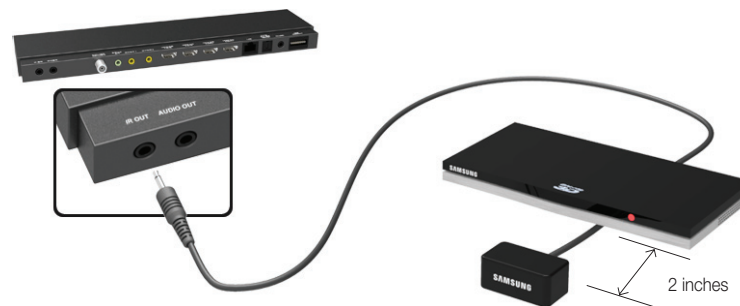
When you view the Source list, the device name and the input port will be displayed together.

- If you have connected a PC to the **HDMI IN 2 (DVI)** port with an HDMI cable, select **PC** from the device name list.
- If you have connected a PC to the **HDMI IN 2 (DVI)** port with an HDMI to DVI cable, select **DVI PC** from the device name list.
- If you connected an AV device to the **HDMI IN 2 (DVI)** port with an HDMI to DVI cable, select **DVI Devices** from the device name list.
- **Information:** View detailed information about the connected devices.
- **Refresh:** Select if a connected device does not appear in the list. If the list does not show the device after you select **Refresh**, check the status of the TV-to-device connection.
- **Remove USB:** Remove the USB device from the list safely. This function is only available when the USB device selected.

Universal Remote Setup: Use to configure universal remote control settings. Using the universal remote control, you can control external devices connected to the TV, such as a set-top box, Blu-ray player, and AV receiver.

Universal Remote Setup

This TV has a universal remote control feature that lets you control cable boxes, Blu-ray players, home theaters, and other third-party external devices connected to the TV using the TV's remote control.





Insert the IR Extender's plug into the IR Out port on the One Connect. Place the other end of the IR Extender (the Transmitter) no more than 2 inches from the external device. Face the IR Extender's transmitter toward the external device's remote control signal receiver. Note that there should be no obstacles between the IR Extender and the external device. Any obstacles will interfere with the transmission of the remote control signal.

To set up an external device for universal control, follow these steps:

1. Turn on the external device you want to set up universal remote functionality for, and then press the SOURCE button on your Smart Touch Control to bring up the Source screen.
2. Select the Universal Remote Setup icon at the top of the screen. This initiates the universal remote setup process.
 - When you select the Universal Remote Setup icon, Universal Remote Setup appears on the screen.
 - You can also access Universal Remote Setup through the TV's menu. (**System > Device Manager > Universal Remote Control**)
3. On the Select Device Type screen, select Start, and then tap the Touch Pad.
4. Select the kind of device you want control - a set-top-box, Blu-ray player, or home theater - and then tap the Touch Pad.
5. On the Select Brand screen, scroll the list of brands up or down, highlight your brand of device, and then tap the Touch Pad.
 - If your brand is not in the list, scroll to the "Search for the brand" entry field, and then tap the Touch Pad. The on-screen keyboard appears. Enter your brand using the keyboard. When finished, select Done, and then tap the Touch Pad.
6. On the Select TV Input Source screen, select the input source the device is connected to, and then tap the Touch Pad.
7. On the Control Test screen, tap the Touch Pad to start the Function Test. If the device turns off, universal remote functionality has been established. Select Yes, and then tap the Touch Pad.





Viewing the e-Manual

This TV has a built-in e-Manual that contains information about your TV's key features and instructions for using them. To view the e-Manual, use one of the following methods:

- Open the **Support** menu and choose **e-Manual (Troubleshooting)**.
 - Press the **MORE** button on the Smart Touch Control to display the virtual remote panel on the TV screen. Flick the touch pad until the quick access panel appears, select the **e-Manual** icon, and then press the touch pad.
-  In the e-Manual, words in blue refer to screen menu options and words in light blue refer to remote control buttons.
-  A printable version of this guide is also available at www.samsung.com/support.

Scrolling a Page

To scroll a page, use one of the following methods:


- Place the focus on the  or  button at the right edge of the screen, and then press the touch pad.
- Drag or flick up or down the line on either the left or right edge of the touch pad.
- Place the focus on the  or  button at the right edge of the screen, drag or flick up or down on the touch pad.

Using the Top Icons


Use the **Back**, **Forward**, and **Opened pages** icons on the top left of the screen to navigate through pages. These icons are available after you have viewed two or more pages.

Returning to the Home Page


To return to the home page, select the **A** button or select  on the top right of the screen.

 To select a letter button (**A**, **B**, **C**, **D**), press the **MORE** button on the Smart Touch Control to display the virtual remote panel on the TV screen. Flick the touch pad until the playback control panel appears, select the **A** button, and then press the touch pad.


Searching the Index

Select the **B** button or select  on the top right of the screen to display the index. Select a term to display the page containing the term.


Searching Pages

Select the **C** button or select  on the top right of the screen, and enter search criteria. Select a page from the list of search results to display it.

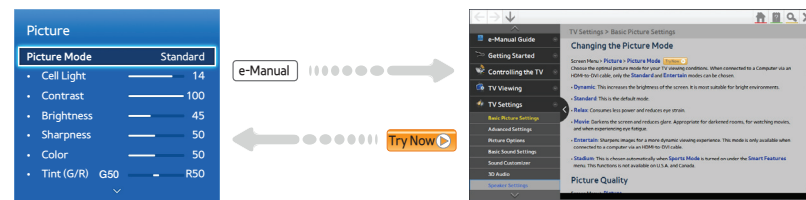
Closing the e-Manual

To close the e-Manual, press and hold the **RETURN** button or select  at the upper-right corner of the screen or press **EXIT** button.


Jumping to a Menu Item

To jump directly to the menu item that is described in the current section, select . You can also jump from a menu item directly to the related section in the e-Manual. With a menu screen displayed, press the **MORE** button on the Smart Touch Control and then select the **e-Manual** icon on the virtual remote panel that appears on the screen.


 This feature may not be available, depending on the menu.



Updating the e-Manual

Press the  button on your remote, select **Apps**, and then select **More Apps** at the bottom of the screen.

On the **More Apps** screen, select **Update Apps**, and then select e-Manual from the list. The TV starts updating the **e-Manual** to the latest version.

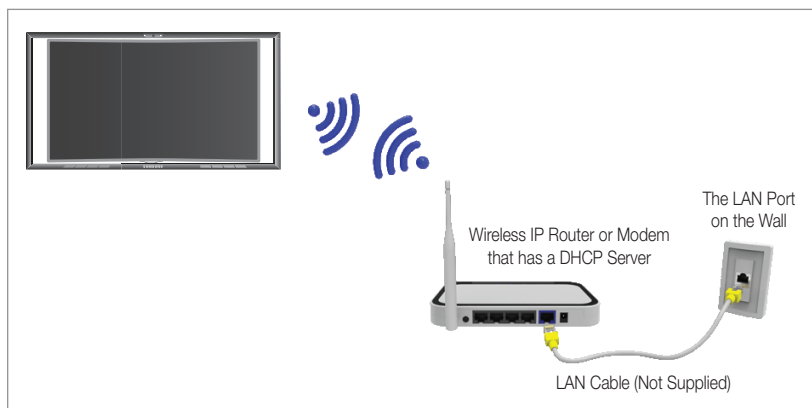
 **e-Manual** appears on the **Update Apps** screen only if there is an update available. **Update Apps** appears on the screen only if there is one or more app updates available.

Connecting to a Network

Connecting the TV to a network gives you access to online services such as Smart Hub and lets you update the TV's software online directly from Samsung.com.

Network Connection - Wireless

Connect the TV to the Internet using a standard wireless router or modem.



Wireless Network Precautions

- This TV supports the IEEE 802.11a/b/g/n communication protocols. Samsung recommends using IEEE 802.11n. If you use one of the other communication protocols, when you play video over a network connection, the video may not play smoothly.

- To use a wireless network, the TV must be connected to a wireless router or modem. If the wireless router supports DHCP, the TV can use a DHCP or static IP address to connect to the wireless network.
- Select a channel that is not currently in use for the wireless router. If the channel set for the wireless router is currently being used by another device, the result is usually interference and/or a communications failure.
- Most wireless networks have an optional security system. To enable a wireless network's security system, you need to create a security key using characters and numbers, and then enter that key into the router through its menu. You then must enter this security key into any other devices you want to connect to the wireless network.

Network Security Protocols

The TV only supports the following wireless network security protocols:

- Authentication Modes: WEP, WPAPSK, WPA2PSK
- Encryption Types: WEP, TKIP, AES

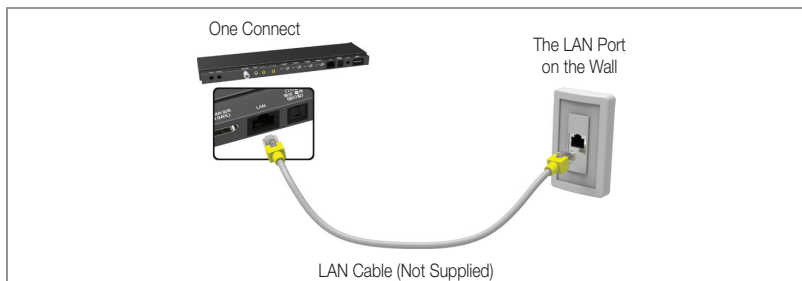
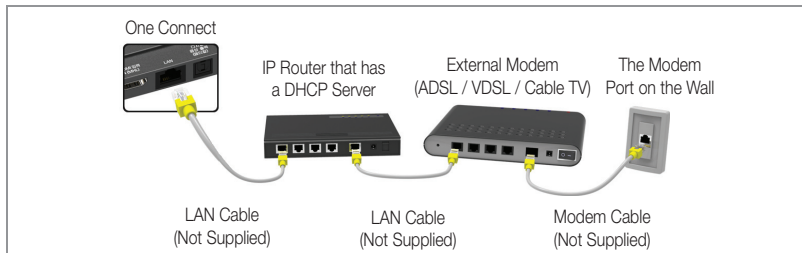
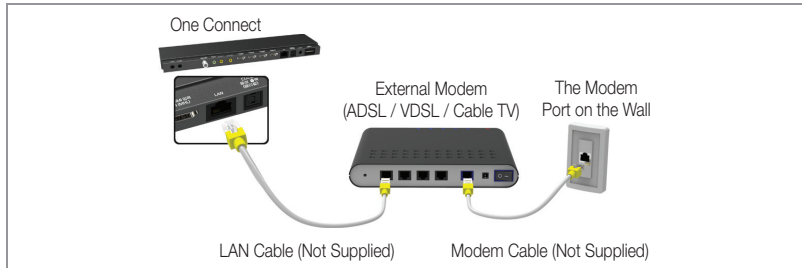
In compliance with the newest Wi-Fi certification specifications, Samsung TVs do not support WEP or TKIP security encryption in networks running in the 802.11n mode.

If the wireless router supports WPS (Wi-Fi Protected Setup), you can connect the TV to your network using PBC (Push Button Configuration) or a PIN (Personal Identification Number). WPS automatically configures the SSID and WPA key settings.

Your Smart TV cannot connect to uncertified wireless routers.

Network Connection - Wired

There are three main ways to connect your TV to your network using cable, depending on your network setup. They are illustrated below:



⚠ The TV does not support network speeds less than or equal to 10Mbps.

⚠ Use Cat 7 cable for the connection.

Samsung Multi View

Samsung Multi View is a convenient feature that allows two users who are both wearing Samsung Multi View 3D Glasses to individually view different programs on the same TV simultaneously. For example, two viewers can use the **Samsung Multi View** feature to each watch a channel of his or her choosing at the same time. In addition, two users can enjoy the same game simultaneously on a single screen.

Important: To use **Samsung Multi View**, you must be wearing a pair of Samsung Multi View 3D Glasses. See page 22.






Using Samsung Multi View

To use Samsung Multi View, press and hold the button or select **Samsung Multi View** on the virtual remote panel. From the window that pops up, select either **Multi Screen View** or **2 Player Gaming**.




- With the **Do not show again** checkbox selected, Samsung Multi View starts immediately with the already used view. To start Samsung Multi View with the already used view, press and hold the button or select **Samsung Multi View** on the virtual remote panel.
- To use another view type, choose **Samsung Multi View** from the menu (Screen Menu > **Picture** > **Samsung Multi View**). Accessing this menu always brings up the window.

Multi Screen Viewing Mode

1. If two or more users each want to watch a different channel or source, use **Multi Screen View** mode.
2. To use **Samsung Multi View**, press the  button or, alternatively, select Samsung Multi View on the virtual remote panel.
3. Select **Multi Screen View** from the pop-up window.

4. Choose the input sources for screens 1 and 2 from the input signal selection window.
5. Once selections have been made, select **Start**. The Samsung Multi View guide screen will appear. Read the guide and then select **OK**.
 To finish watching Samsung Multi View, press the  button.

2 Player Gaming Mode

1. To use **Samsung Multi View**, press the  button or, alternatively, select Samsung Multi View on the virtual remote panel.
2. Select **2 Player Gaming** mode from the pop-up window.
3. In the screen split selection window, choose up/down or left/right.
4. Once selections have been made, select **Start**. The Samsung Multi View guide screen will appear. Read the guide and then select **OK**.
 To finish watching Samsung Multi View, press the  button.

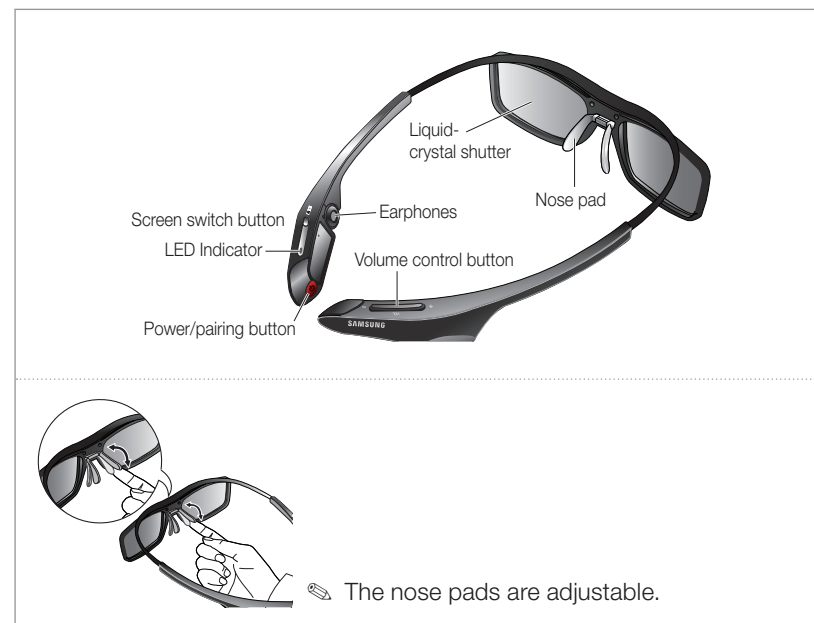
Samsung Multi View 3D Glasses

Features

Samsung Multi View 3D Glasses let you view 3D or Samsung Multi View videos. To view 3D or Samsung Multi View videos, you must use the Samsung Multi View 3D Glasses with a Samsung S9C TV. The glasses establish a connection with the TV using the 2.4GHz or 5GHz RF frequency.

- ✎ The Samsung Multi View 3D Glasses do not connect to other wireless communication devices.
- ✎ The Samsung Multi View and earphones features are supported only by the S9C TV released in 2013.
- ✎ With the D, E and F series Samsung TVs released after 2011, you can use the glasses as regular 3D glasses without the Samsung Multi View and earphones feature.
- ✎ Audio is available through the TV speakers or the earphones on the glasses during normal 3D viewing and only through the earphones on the glasses during Multi View/Multi View 3D viewing.
 - Speakers can be selected from the TV's menu.

Samsung Multi View 3D Glasses At a Glance

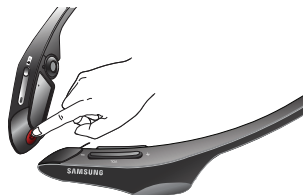


- ✎ To wear the Samsung Multi View 3D Glasses over eyeglasses, detach the nose pad from the Samsung Multi View 3D Glasses.
- ✎ Refer to the next page for details on how to attach and detach the nose pad.
- ✎ The Samsung Multi View 3D glasses are supplied with pre-installed medium-sized earphone inserts.
Large-sized and small-sized inserts are supplied in a separate package.

Using the 3D glasses

Pairing the Samsung Multi View 3D Glasses

What is pairing? Pairing is a process that establishes a connection between the Samsung Multi View TV and the Samsung Multi View 3D Glasses so that the devices can exchange information.



- To perform pairing**

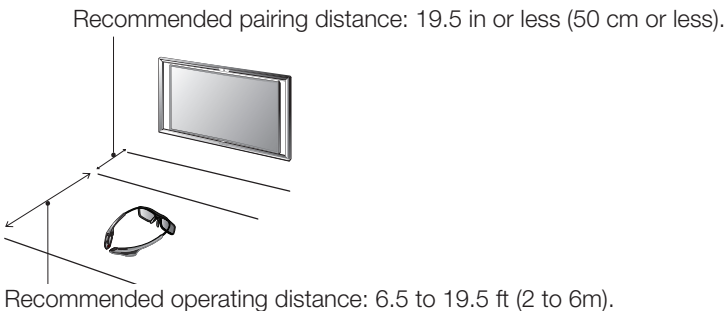
Turn on the TV. Press and hold the Power/Pairing button on the Samsung Multi View 3D Glasses for 2 seconds or longer to run the pairing operation. On the screen of the S9C TV, **"Samsung Multi View 3D glasses is detected. Do you want to use this device? Yes/ No"** pop-up window appears. If you select Yes, a connection is established.

Pairing causes a momentary interruption in the audio when you are listening to audio through the earphones on the glasses.

- Turning On/Off**

If you press the Power/Pairing button briefly, the glasses are turned on and the green LED is turned on for 3 seconds. If you press the Power/Pairing button briefly again, the glasses are turned off and the red LED is turned on for 3 seconds.

- Operating range**



Recommended operating distance	2~6m (6.5 to 19.5 ft)
Recommended pairing distance	50 cm or less (19.5 in)

- Ensure your Samsung TV and Samsung Multi View 3D Glasses are no farther than 50 cm (19.5 in) apart from each another while pairing is in progress.
- The working distance depends on obstacles (a person, metal, walls, etc.) or electromagnetic waves.
- Even if you turned the glasses on, the glasses are automatically turned off if the 3D or Samsung Multi View mode of the TV is turned off.
- If the glasses do not work when the TV is in 3D or Samsung Multi View mode, press the Power button on the glasses briefly again.
- This product is rechargeable. It may not operate the first time you attempt to use it because the battery needs to be charged. If this occurs, charge the battery. See page 25 for instructions.
- If you have not used the glasses for an extended period of time or are not using the glasses regularly, charge the battery once a month to keep it operational.

- **Initials pairing**

1. Turn on the TV.
2. Press and hold the pairing button on the Samsung Multi View 3D Glasses for more than 2 seconds. The glasses turn on and start pairing.
3. On the screen of the S9C TV, the **"Samsung Multi View 3D glasses is detected. Do you want to use this device? Yes/ No"** pop-up window appears. If you select Yes, a connection is established.
4. Enjoy 3D or Samsung Multi View videos after configuring the 3D or Samsung Multi View function settings on the TV.
 - If the pairing fails, the Samsung Multi View 3D Glasses will power off.
 - If the first attempt to pair fails, turn the TV off and on again, and then go to Step 2.
 - **If pairing is in progress:** The LED will blink green and red alternately for 2 seconds.

- **How to pair again**

Press the pairing button on the Samsung Multi View 3D Glasses for more than 2 seconds.

<Pairing is needed again on the following occasions>

- Pairing may be needed again after you have had your S9C TV repaired.
- The pairing operation is required when you purchase and use another S9C TV released in 2013.


Using the earphones

- **Pulling the earphones out**

Gently hold the earphones and remove the cable along the groove inside the glasses.


- **Putting the earphones back**

Insert the earphones into the corresponding holes in the glasses and insert the cable into the groove.

 **For information about how to use the earphones, refer to the back cover of this user manual.**

Switching the screen

To switch the screen while viewing in Samsung Multi View mode, press the Switch Screen button on the front of the LED once. When screen 1 is switched to screen 2, the LED blinks green once and when the screen 2 is switched to screen 1, the LED blinks green twice.

 At the moment when the screen is switched, you will notice flickering through the glasses.

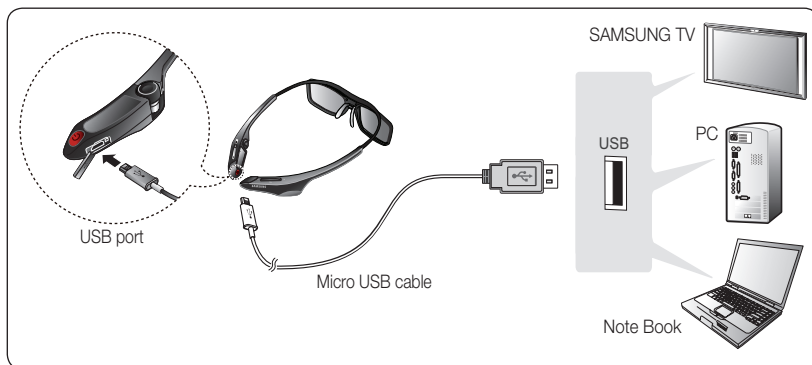
Controlling the volume

If you press the + volume button on the Samsung Multi View 3D Glasses briefly, the volume is turned up and if you press the - volume button briefly, the volume is turned down. If you press and hold one of the volume buttons, the volume is turned up to the maximum or down to the minimum.

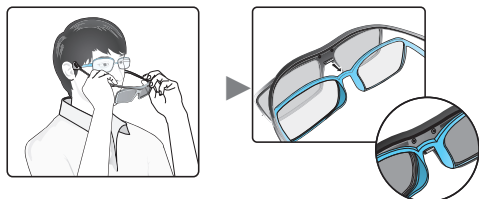
Charging the battery

If the red LED blinks every 2 seconds or you periodically hear a “beep~ beep~” sound while using the earphones, recharge the battery by connecting the USB cable to a USB port on a TV, PC, or Notebook PC.

The orange LED blinks every 0.5 second while the battery charges. The green LED blinks every 2 second when the battery is completely charged.

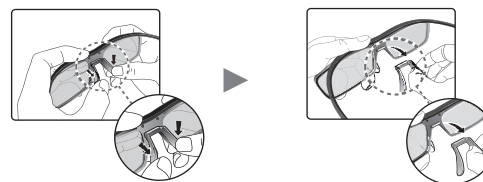


• To wear the Samsung Multi View 3D Glasses over eyeglasses



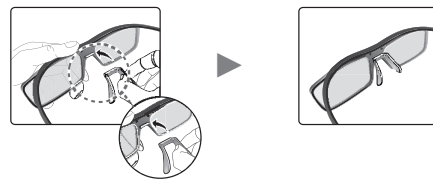
To wear the Samsung Multi View 3D Glasses over eyeglasses, detach the nose pad from the Samsung Multi View 3D Glasses.

• Detaching the nose pad

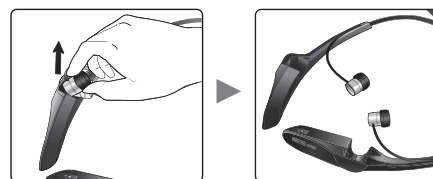


To detach the nose pad, press the bottom portion down with both thumbs, and then pull the nose pad away from the glasses as shown.

• Attaching the nose pad



• Putting the earphones back



• Placing the earphones back





Troubleshooting

If you encounter...	Try this...
My Samsung Multi View 3D Glasses do not work.	<p>The Samsung Multi View 3D Glasses should be close to the TV. Move the Samsung Multi View 3D Glasses to within 6m (19.5 ft) of the TV.</p> <p>Try the pairing again.</p> <p>Check the 3D or Samsung Multi View function settings on the TV.</p> <p>The battery may be low. Recharge the battery.</p> <p>Press the Power button briefly again.</p>
There is no sound.	<p>Press the + volume button of the glasses to turn up the volume.</p> <p>Pairing causes a momentary interruption in the audio when you are listening to audio through the earphones on the glasses. Wait until pairing is complete.</p> <p>Try the pairing operation again and check if pairing works.</p> <p>The battery is low. Charge the battery.</p>
No sound or intermittent sound	<p>Devices generating electromagnetic waves, such as microwave ovens and wireless routers, can cause abnormal TV sound. Keep such devices, including mobile communication devices, as far away from the TV as possible.</p>
The LED keeps blinking. The glasses make a series of beeps while in use.	<p>The battery is low. Charge the battery.</p>

Specifications (Model no.: SSG-5900CR)

Optics	Shutters	Liquid crystal	Transmittance	35%
	Recommended operating distance	2 ~ 6m (6.5 to 19.5 ft)	Field rate	When viewing 3D: 120 Hz When viewing Samsung Multi View: 240 Hz
Weight	SSG-5900CR	42g /1.5oz.		
Power	Glasses	Built-in 3.7V Lithium polymer battery		
Power consumption	Glasses	When viewing the screen only: 1.3mA, When listening to sound through the earphones: 37mA		
	Battery	Type	110mAh, 3.7V	
		Operating time	Viewing 3D: 80 hours, Viewing Samsung Multi View: 3 hours	
Operating conditions	Operating temperature	50°F ~ 104°F (10°C ~ 40°C)		
	Custody temperature	-4°F ~ 140°F (-20°C ~ 60°C)		

 Product specifications may be changed without notice in order to enhance product performance.

 The continuous operating time may differ depending on the wireless communication environment and usage conditions.

What is Remote Support?

Samsung Remote Support service offers you one-on-one support with a Samsung Technician who can remotely:

- **Diagnose** your TV
- **Adjust the TV settings** for you
- **Perform a factory reset** on your TV
- Install recommended **firmware updates**

How Does it Work?

Having a Samsung Tech remotely service your TV is easy.



1. **Call the Samsung Contact Center** and ask for remote support.



3. Select Remote Management, and then agree to the service agreements. When the PIN screen appears, provide the PIN number to the agent.



2. **Open the menu** on your TV and go to the **Support** section.



4. The agent will then **access your TV**. That's it!

Troubleshooting

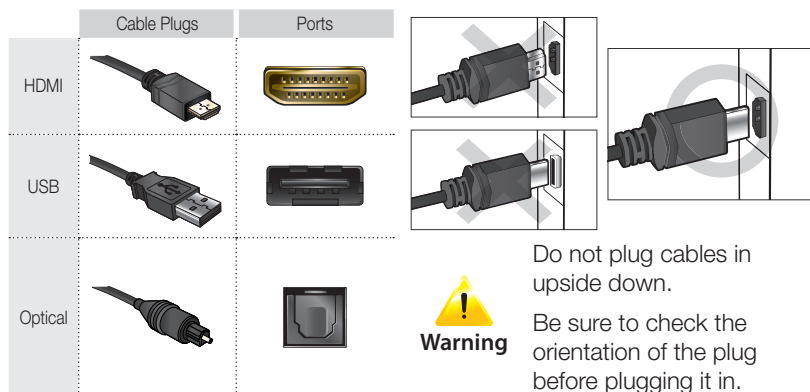
If the TV seems to have a problem, first review this list of possible problems and solutions. Also, review the Troubleshooting Section in the e-Manual. If none of the troubleshooting tips apply, visit www.samsung.com/support or call Samsung Customer Service at 1-800-SAMSUNG (1-800-726-7864).


Issues	Solutions and Explanations
Flickering and Dimming	If your Samsung Television is flickering or dimming sporadically, you may need to disable some of the energy efficiency features. Disable Energy Saving (System > Eco Solution > Eco Sensor) and/or Energy Saving (System > Eco Solution > Energy Saving) and check again.
Component Connections / Screen Color	If you find that the color on your Samsung television screen is not correct or the black and white colors are off, run a Self Diagnosis Picture Test (Support > Self Diagnosis > Picture Test). If the picture problem is caused by the TV, the problem should be visible in the Picture Test. If the problem is not visible, next confirm that the TV's video input ports are connected to the correct external video device output ports and that none of the connections are loose. Finally, if possible, test your external video devices by connecting them to another TV.
Screen Brightness	If you find that the colors on your Samsung TV are correct but just a little too dark or bright, try adjusting the following settings first. Navigate to Picture and adjust Cell Light, Contrast, Brightness, Sharpness, Color, Tint (G/R) and other picture quality adjustment settings.
Auto Motion Plus/Blur	If you find that there is a blur or "ghost" shadow to the images on your television screen, you might be able to correct the issue using Auto Motion Plus (Picture > Picture Options > Auto Motion Plus) .
Unwanted Powering Off	If your Samsung TV appears to turn off by itself, try disabling some of the TV's energy efficiency and automatic off features. Check if Sleep Timer (System > Time > Sleep Timer) has been enabled. Sleep Timer automatically turns off the TV after an amount of time that you select. If the Sleep Timer has not been enabled, see if No Signal Power Off (System > Eco Solution > No Signal Power Off) or Auto Power Off (System > Eco Solution > Auto Power Off) has been enabled. No Signal Power Off turns off the TV if no signal has been received by the TV for a specified period time. Auto Power Off turns off the TV if there has been no user input in four hours.


Issues	Solutions and Explanations
Trouble Powering On	<p>When the TV is turned on, the remote control receiver flashes 5 times before the screen turns on.</p> <p>If you find that you are having problems powering on your Samsung television, there are a number of things to check before calling the service department.</p> <p>If the power cord is connected properly and the remote control is operating normally, the problem might be with the antenna cable connection or the cable/satellite box not being turned on. Check the antenna connection or turn on the cable/satellite box.</p>
Stand Assembly	If you have any trouble assembling the stand, review the stand assembly instruction in the Quick Start Guide.
Cannot Find a Channel	Re-run Setup (Go to Menu > System > Setup) or run Auto Program . (Go to Menu > Broadcasting > Auto Program).


 For detailed troubleshooting information, watch the troubleshooting videos at www.samsung.com/spsn.

Make sure you have the correct cable before plugging it in. Illustrations of common plugs and ports are shown below.



Issues	Solutions and Explanations
The TV won't turn on.	<ul style="list-style-type: none"> Make sure the AC power cord is securely plugged in to the wall outlet and the TV. Make sure the wall outlet is working. Try pressing the  button on the TV to make sure the problem is not the remote. If the TV turns on, refer to "Remote control does not work" below.
There is no picture/video.	<ul style="list-style-type: none"> Check the cable connections. Remove and reconnect all cables connected to the TV and external devices. Set the video outputs of your external devices (Cable/Sat Box, DVD, Blu-ray etc) to match the TV's input connections. For example, if an external device's output is HDMI, it should be connected to an HDMI input on the TV. Make sure your connected devices are powered on. Be sure to select the correct input source. Reboot the connected device by unplugging it, and then reconnecting the device's power cable.
The remote control does not work.	<ul style="list-style-type: none"> Replace the remote control batteries. Make sure the batteries are installed with their poles (+/-) in the correct direction. Clean the sensor's transmission window on the remote. Try pointing the remote directly at the TV from 5-6 feet away.
The cable/set top box remote control doesn't turn the TV on or off or adjust the volume.	<ul style="list-style-type: none"> Program the Cable/Set remote control to operate the TV. Refer to the Cable/Set-Top-Box user manual for the SAMSUNG TV code.

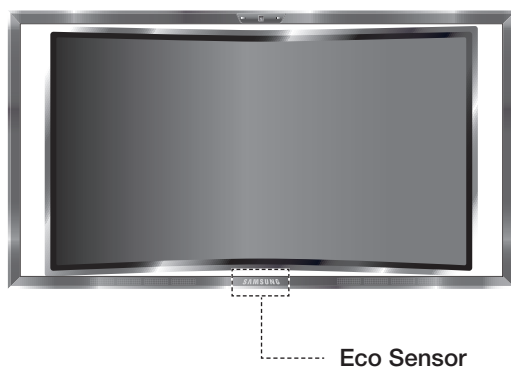
 This TFT LED panel uses a panel consisting of sub pixels which require sophisticated technology to produce. There may be, however, a few bright or dark pixels on the screen. These pixels will have no impact on the performance of the product.

 To keep your TV in optimum condition, upgrade to the latest software. Use the Update Now or Auto Update functions on the TV's menu (Screen Menu > **Support > Software Update > Update now** or Screen Menu > **Support > Software Update > Auto Update**).

Eco Sensor and Screen Brightness

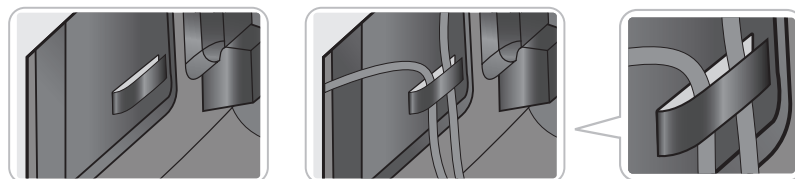


Eco Sensor measures the light in your room and optimizes the brightness of the TV automatically to reduce power consumption. This causes the TV to brighten and dim automatically. If you want to turn this function off, go to **Menu > System > Eco Solution > Eco Sensor**



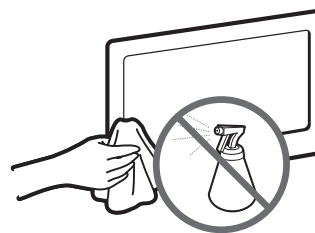
Do not block the sensor with any material. It can decrease picture brightness.

Assembling the Cable Manager

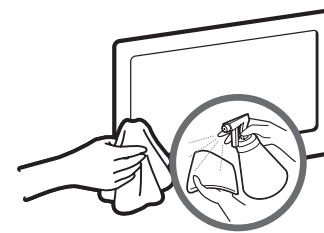


Maintenance

- ✎ If a sticker was attached to the TV screen, some debris can remain after you remove the sticker. Please clean the debris off before watching TV.
- ✎ The exterior and screen of the product can get scratched during cleaning. Be sure to wipe the exterior and screen carefully using the cloth provided or a soft cloth to prevent scratches.

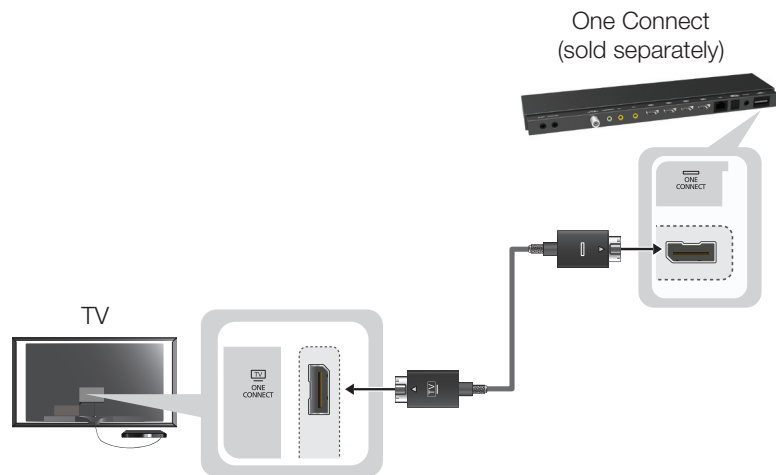


Do not spray water directly onto the product. Any liquid that gets into the product may cause a failure, fire, or electric shock.




Clean the product with a soft cloth dampened with a small amount of water. Do not use a flammable liquid (e.g. benzene, thinners) or a cleaning agent.

TV Upgrade using One Connect
(sold separately)








Connecting a more current version of One Connect (sold separately) to your Samsung TV will allow you to enjoy the latest features and content without having to purchase a new TV. Experience the latest features and services offered by Samsung Electronics via One Connect.

-  One Connect is sold separately. Purchasing One Connect will allow you to upgrade the software to the version from the year in which your One Connect was released. Not supported on all models.

Specifications

Display Resolution	1920 x 1080
Environmental Considerations	
Operating Temperature	50°F to 104°F (10°C to 40°C)
Operating Humidity	10% to 80%, non-condensing
Storage Temperature	-4°F to 113°F (-20°C to 45°C)
Storage Humidity	5% to 95%, non-condensing
Stand Swivel (Left / Right)	0°
Model Name	KN55S9C
Screen Size	55" Class
(Diagonal)	(54.6 measured diagonally)
Sound	
(Output)	40W (10 x 2, woofer 20 x 1)
Dimensions (W x H x D)	
Body	55.8 x 30.6 x 5.3 inches (1418.1 x 777.7 x 135.6 mm)
With stand	55.8 x 30.6 x 14.1 inches (1418.1 x 777.7 x 359.7 mm)
Weight	
Without Stand	59.9 lbs (27.2 kg)
With Stand	68.1 lbs (30.9 kg)

-  Design and specifications are subject to change without prior notice.
-  The actual appearance of the TV may differ from the images in this manual, depending on the model.
-  This device is a Class B digital apparatus.
-  For information about the power supply, and more information about power consumption, refer to the label attached to the product.
-  Typical power consumption is measured according to Energy Star Program requirements for Televisions.

Dispose unwanted electronics through an approved recycler.

To find the nearest recycling location, go to our website:

www.samsung.com/recyclingdirect or call, (877) 278 - 0799

Decreasing Power Consumption

To decrease power consumption, unplug the power cord when you don't intend to use the TV for a long time.

Licenses



Warranty Information

Federal Communication Commission Interference Statement

This equipment has been tested and found to comply with the limits for a Class B digital device, pursuant to Part 15 of the FCC Rules. These limits are designed to provide reasonable protection against harmful interference in a residential installation. This equipment generates, uses and can radiate radio frequency energy and, if not installed and used in accordance with the instructions, may cause harmful interference to radio communications. However, there is no guarantee that interference will not occur in a particular installation. If this equipment does cause harmful interference to radio or television reception, which can be determined by turning the equipment off and on, the user is encouraged to try to correct the interference by one of the following measures:

- Reorient or relocate the receiving antenna.
- Increase the separation between the equipment and receiver.
- Connect the equipment into an outlet on a circuit different from that to which the receiver is connected.
- Consult the dealer or an experienced radio/TV technician for help.

FCC Caution: Any changes or modifications not expressly approved by the party responsible for compliance could void the user's authority to operate this equipment.

This device complies with Part 15 of the FCC Rules. Operation is subject to the following two conditions: (1) This device may not cause harmful interference, and (2) this device must accept any interference received, including interference that may cause undesired operation.

For product available in the USA/Canada market, only channel 1~11 can be operated. Selection of other channels is not possible.

This device and its antenna(s) must not be co-located or operation in conjunction with any other antenna or transmitter.

FCC Radiation Exposure Statement:

This equipment complies with FCC radiation exposure limits set forth for an uncontrolled environment. This equipment should be installed and operated with minimum distance 20cm between the radiator & your body.

This Class B digital apparatus complies with Canadian ICES-003.

Cet appareil numérique de la classe B conforme à la norme NMB-003 du Canada.

This device complies with Industry Canada license-exempt RSS standard(s). Operation is subject to the following two conditions: (1) this device may not cause interference, and (2) this device must accept any interference, including interference that may cause undesired operation of the device.

Le présent appareil est conforme aux CNR d'Industrie Canada applicables aux appareils radio exempts de licence. L'exploitation est autorisée aux deux conditions suivantes: (1) l'appareil ne doit pas produire de brouillage, et (2) l'utilisateur de l'appareil doit accepter tout brouillage radioélectrique subi, même si le brouillage est susceptible d'en compromettre le fonctionnement.

For product available in the USA/Canada market, only channel 1~11 can be operated. Selection of other channels is not possible.

This device and its antenna(s) must not be co-located or operation in conjunction with any other antenna or transmitter.

Under Industry Canada regulations, this radio transmitter may only operate using an antenna of a type and maximum (or lesser) gain approved for the transmitter by Industry Canada. To reduce potential radio interference to other users, the antenna type and its gain should be so chosen that the equivalent isotropically radiated power (e.i.r.p.) is not more than that necessary for successful communication.

IC Radiation Exposure Statement:

This equipment complies with IC RSS-102 radiation exposure limits set forth for an uncontrolled environment. This equipment should be installed and operated with minimum distance 20cm between the radiator & your body.

IMPORTANT WARRANTY INFORMATION REGARDING TELEVISION FORMAT VIEWING

 See the warranty card for more information on warranty terms.

Wide screen format LED Displays (with 16:9 aspect ratios, the ratio of the screen width to height) are primarily designed to view wide screen format full-motion video. The images displayed on them should primarily be in the wide screen, 16:9 ratio format, or expanded to fill the screen, if your model offers this feature, with the images constantly in motion. Displaying stationary graphics and images on the screen, such as the dark sidebars on non-expanded standard format television video and programming, should be limited to no more than 5% of the total television viewing time per week.

Additionally, viewing other stationary images and text such as stock market crawls, video game displays, station logos, web sites or computer graphics and patterns, should be limited as described above for all televisions.

Displaying stationary images that exceed the above guidelines can cause uneven aging of LED Displays that leave subtle, but permanent burned-in ghost images in the LED picture. To avoid this, vary the programming and images, and primarily display full screen moving images, not stationary patterns or dark bars. On LED models that offer picture sizing features, use these controls to view different formats as a full screen picture.

Be careful about the television formats you select and the length of time you view them. Uneven LED aging as a result of format selection and use, as well as burned in images, are not covered by your Samsung limited warranty.

- **SAMSUNG ELECTRONICS NORTH AMERICAN LIMITED WARRANTY STATEMENT**

Subject to the requirements, conditions, exclusions and limitations of the original Limited Warranty supplied with Samsung Electronics (SAMSUNG) products, and the requirements, conditions, exclusions and limitations contained herein, SAMSUNG will additionally provide Warranty Repair Service in the United States on SAMSUNG products purchased in Canada, and in Canada on SAMSUNG products purchased in the United States, for the warranty period originally specified, and to the Original Purchaser only.

The above described warranty repairs must be performed by a SAMSUNG Authorized Service Center. Along with this Statement, the Original Limited Warranty Statement and a dated Bill of Sale as Proof of Purchase must be presented to the Service Center. Transportation to and from the Service Center is the responsibility of the purchaser. Conditions covered are limited only to manufacturing defects in material or workmanship, and only those encountered in normal use of the product.

Excluded, but not limited to, are any originally specified provisions for, in-home or on-site services, minimum or maximum repair times, exchanges or replacements, accessories, options, upgrades, or consumables.

For the location of a SAMSUNG Authorized Service Center, please call toll-free:

- In the United States: 1-800-SAMSUNG (1-800-726-7864)
- In Canada: 1-800-SAMSUNG

Still image warning

Avoid displaying still images (such as jpeg picture files), still image elements (such as TV channel logos, stock or news bars at the screen bottom etc.), or programs in panorama or 4:3 image format on the screen. Constantly displaying still pictures can cause image burn-in on the LED screen, which will affect image quality. To reduce risk of this effect, please follow the recommendations below:

- Avoid displaying the same TV channel for long periods.
- Always try to display any image in full screen. Use the TV set's picture format menu for the best possible match.
- Reduce brightness and contrast to avoid the appearance of after-images.
- Use all TV features designed to reduce image retention and screen burn. Refer to the e-Manual for details.

Regulatory Compliance Statements (For 3D Active Glasses)

FCC COMPLIANCE

Federal Communication Commission Interference Statement

1. Changes or modifications not expressly approved by the party responsible for compliance could void the user's authority to operate the equipment.
2. **NOTE:** This equipment has been tested and found to comply with the limits for a Class B digital device, pursuant to Part 15 of the FCC Rules. These limits are designed to provide reasonable protection against harmful interference in a residential installation. This equipment generates, uses and can radiate radio frequency energy and, if not installed and used in accordance with the instructions, may cause harmful interference to radio communications. However, there is no guarantee that interference will not occur in a particular installation. If this equipment does cause harmful interference to radio or television reception, which can be determined by turning the equipment off and on, the user is encouraged to try to correct the interference by one or more of the following measures:

- Reorient or relocate the receiving antenna.
- Increase the separation between the equipment and receiver.
- Connect the equipment to an outlet on a circuit different from that to which the receiver is connected.
- Consult the dealer or an experienced radio/TV technician for help.

FCC Caution: Any changes or modifications not expressly approved by the party responsible for compliance could void the user's authority to operate this equipment.

This device complies with Part 15 of the FCC Rules. Operation is subject to the following two conditions: (1) This device may not cause harmful interference, and (2) this device must accept any interference received, including interference that may cause undesired operation.

CALIFORNIA USA ONLY

This perchlorate warning applies only to primary CR
(Manganese Dioxide)

Lithium coin cells in the product sold or distributed ONLY in California
USA

" Perchlorate Material - special handling may apply,
See www.dtsc.ca.gov/hazardouswaste/perchlorate."

SAMSUNG BRAND PRODUCTS

LIMITED WARRANTY TO ORIGINAL PURCHASER

This SAMSUNG brand product, as supplied and distributed by SAMSUNG and delivered new, in the original carton to the original consumer purchaser, is warranted by SAMSUNG against manufacturing defects in materials and workmanship for period of:

Categories	Parts	Labor	Size	Service
LCD/LED TV	1 Year	1 Year	39" and Larger	Carry-In or In Home
			37" and Smaller	Carry-In
Plasma Display	1 Year	1 Year	All	Carry-In or In Home
Projector (Excluding Lamp **)	2 Year	2 Year	All	Carry-In or Pick up
PICO & LED Pocket Projector	1 Year	1 Year	All	Carry-In or Pick up
3D Glasses	1 Year	1 Year	-	Carry-In or Pick up

** 180 Days after Purchasing and 600 Hours of Use Lamp on Projector
90 Days Parts and Labor for Commercial Use

This limited warranty begins on the original date of purchase, and is valid only on products purchased and used in the United States. To receive warranty service, the purchaser must contact SAMSUNG for problem determination and service procedures. Warranty service can only be performed by a SAMSUNG authorized service center. The original dated bill of sale must be presented upon request as proof of purchase to SAMSUNG or SAMSUNG's authorized service center.

SAMSUNG will repair or replace this product, at our option and at no charge as stipulated herein, with new or reconditioned parts or products if found to be defective during the limited warranty period specified above. All replaced parts and products become the property of SAMSUNG and must be returned to SAMSUNG. Replacement parts and products assume the remaining original warranty, or ninety (90) days, whichever is longer.

Certain products are eligible for In-home service at Samsung's discretion. To receive in-home service, the product must be unobstructed and accessible to service personnel. If during in-home service, repair cannot not be completed, it may be necessary to remove, repair and return the product. If in-home service is unavailable, SAMSUNG may elect, at our option, to provide for transportation of our choice to and from a SAMSUNG authorized service center. Otherwise, and for 37" and smaller LCD/LED TV, transportation to and from the SAMSUNG authorized service center is the responsibility of the purchaser.

This limited warranty covers manufacturing defects in materials and workmanship encountered in normal, and except to the extent otherwise expressly provided for in this statement, noncommercial use of this product, and shall not apply to the following, including, but not limited to: damage which occurs in shipment; delivery and installation; applications and uses for which this product was not intended; altered product or serial numbers; cosmetic damage or exterior finishes; accidents, abuse, neglect, fire, water, lightning or other acts of nature; use of products, equipment, systems, utilities, services, parts, supplies, accessories, applications, installations, repairs, external wiring or connectors not supplied or authorized by SAMSUNG which damage this product or result in service problems; incorrect electrical line voltage, fluctuations and surges; customer adjustments and failure to follow operating instructions, cleaning, maintenance and environmental instructions that are covered and prescribed in the instruction book; reception problems and distortion related to noise, echo, interference or other signal transmission and delivery problems; brightness related to normal aging, or burned-in images. SAMSUNG does not warrant uninterrupted or error-free operation of the product.

THERE ARE NO EXPRESS WARRANTIES OTHER THAN THOSE LISTED AND DESCRIBED ABOVE, AND NO WARRANTIES WHETHER EXPRESS OR IMPLIED, INCLUDING, BUT NOT LIMITED TO, ANY IMPLIED WARRANTIES OF MERCHANTABILITY OR FITNESS FOR A PARTICULAR PURPOSE, SHALL APPLY AFTER THE EXPRESS WARRANTY PERIODS STATED ABOVE, AND NO OTHER EXPRESS WARRANTY OR GUARANTY GIVEN BY ANY PERSON, FIRM OR CORPORATION WITH RESPECT TO THIS PRODUCT SHALL BE BINDING ON SAMSUNG. SAMSUNG SHALL NOT BE LIABLE FOR LOSS OF REVENUE OR PROFITS, FAILURE TO REALIZE SAVINGS OR OTHER BENEFITS, OR ANY OTHER SPECIAL, INCIDENTAL OR CONSEQUENTIAL DAMAGES CAUSED BY THE USE, MISUSE OR INABILITY TO USE THIS PRODUCT, REGARDLESS OF THE LEGAL THEORY ON WHICH THE CLAIM IS BASED, AND EVEN IF SAMSUNG HAS BEEN ADVISED OF THE POSSIBILITY OF SUCH DAMAGES. NOR SHALL RECOVERY OF ANY KIND AGAINST SAMSUNG BE GREATER IN AMOUNT THAN THE PURCHASE PRICE OF THE PRODUCT SOLD BY SAMSUNG AND CAUSING THE ALLEGED DAMAGE. WITHOUT LIMITING THE FOREGOING, PURCHASER ASSUMES ALL RISK AND LIABILITY FOR LOSS, DAMAGE OR INJURY TO PURCHASER AND PURCHASER'S PROPERTY AND TO OTHERS AND THEIR PROPERTY ARISING OUT OF THE USE, MISUSE OR INABILITY TO USE THIS PRODUCT SOLD BY SAMSUNG NOT CAUSED DIRECTLY BY THE NEGLIGENCE OF SAMSUNG. THIS LIMITED WARRANTY SHALL NOT EXTEND TO ANYONE OTHER THAN THE ORIGINAL PURCHASER OF THIS PRODUCT, IS NONTRANSFERABLE AND STATES YOUR EXCLUSIVE REMEDY.

Some states do not allow limitations on how long an implied warranty lasts, or the exclusion or limitation of incidental or consequential damages, so the above limitations or exclusions may not apply to you. This warranty gives you specific legal rights, and you may also have other rights which vary from state to state.

To obtain warranty service, please contact SAMSUNG at:

Samsung Electronics America, Inc.
85 Challenger Road
Ridgefield Park, NJ 07660-2112
1-800-SAMSUNG (7267864) – www.samsung.com
1-800-749-0260: Projectors only

This page is intentionally left blank.

This page is intentionally left blank.

This page is intentionally left blank.