

SAMSUNG

SERIES 7
7100

QUICK START GUIDE



BN68-05280A-02

Welcome to your new Smart TV!

The following instructions cover assembling, connecting, and setting up your new TV. Make sure you have the accessories listed below.

Included in this box

Remote Control



Smart Touch Control



Batteries (AAA x 2)

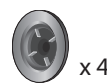
Stand Parts and Cables



Power cord



IR extender



Wall mount adapter x 4



Stand Cover x 2

Attach the TV to the Stand

Step 1

Connect video devices

Step 2

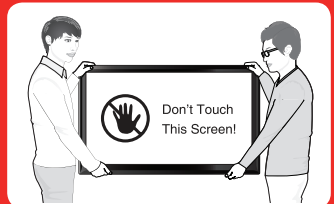
Using the Smart Touch Control

Step 3

Power on and start the initial setup

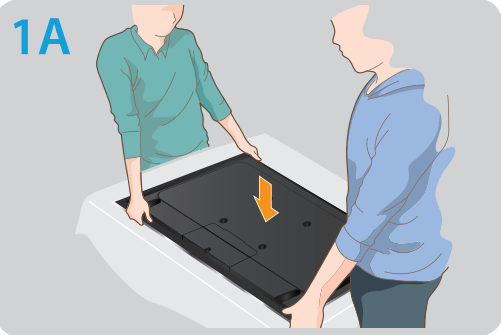
Step 4

Warning: Screens can be damaged from direct pressure when handled incorrectly. We recommend lifting the TV by the edges, as shown.

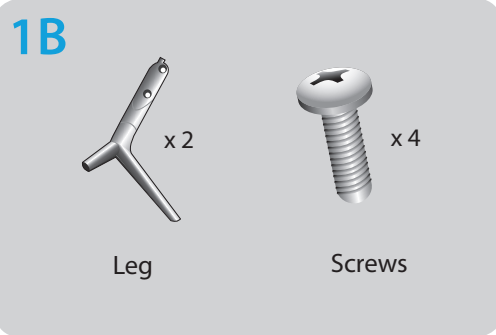


Also included: User manual, regulatory guide, 3D Active Glasses

Step 1 Attach the TV to the Stand

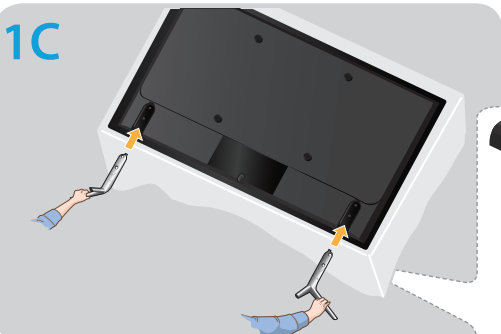


Lay the TV on a soft surface, screen side down. Use the packing material to protect the screen.

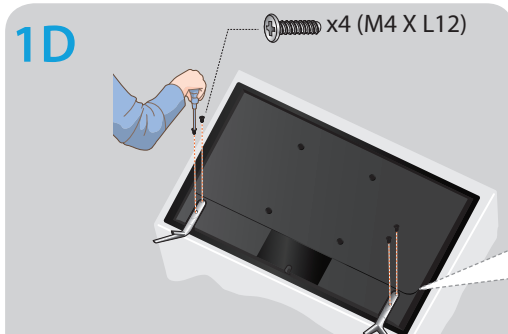


Find the stand leg and screws in the box and set aside.

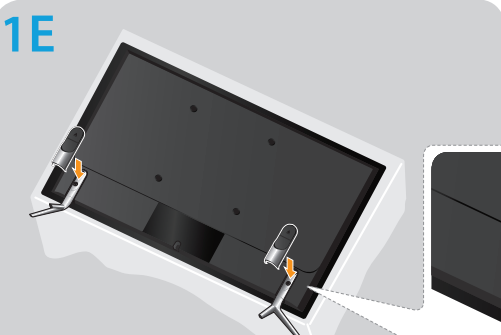
REQUIRED TOOLS: a Phillips head screwdriver and a soft, flat surface larger than the TV (such as the box).



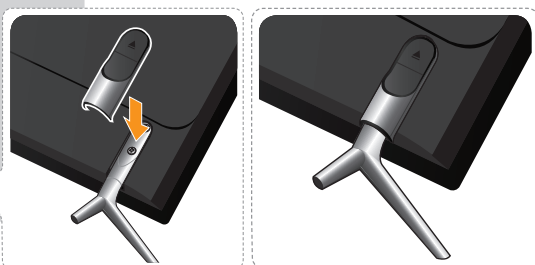
Insert the stands into the grooves on both sides on the bottom of the TV's back.



Insert 4 screws and secure the stand to the TV.

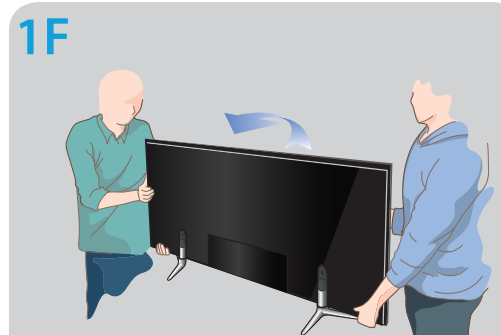
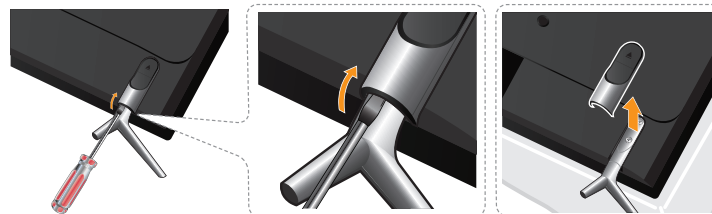


Place the stand covers on the stands and press them until they click in place.



To detach the stand covers from the TV, use a flat screwdriver. Insert a flat screwdriver into the gap at the bottom of the stand covers, and pull it up until they separate.

⚠ Be careful not to scratch the stand with the screwdriver.



Put up the TV with assistance from a person after attaching the stands to the TV.


Step 2 Connect video devices

We suggest using HDMI connections whenever possible for the best picture quality.

- Please check the shape of the plugs to avoid inserting them upside down.
- The appearance of your TV may differ from the images below, depending on the model.

USB Connections

You can connect USB storage devices to the USB ports and enjoy personal photos, videos, and music.




Best Connection : HDMI

We suggest using HDMI whenever possible.


HDMI 1 is the default port for a cable or satellite set-top box.

Use the other ports for Blu-ray players, game consoles, and other devices.




Power Input

Plug in after you have made all other connections.



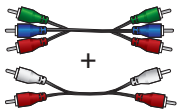
Wired Ethernet



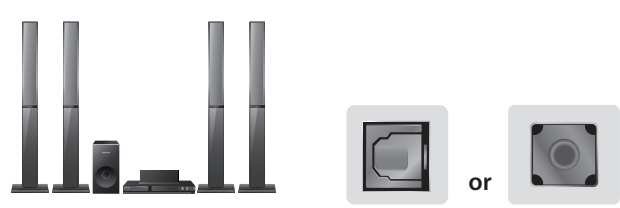
Good Connection : Component and AV

Match the colors on your device's cables to the colors on the ports. Connect the yellow composite video out connector from an AV device to the green AV IN port.


AV also accepts component video connections (red/green/blue).



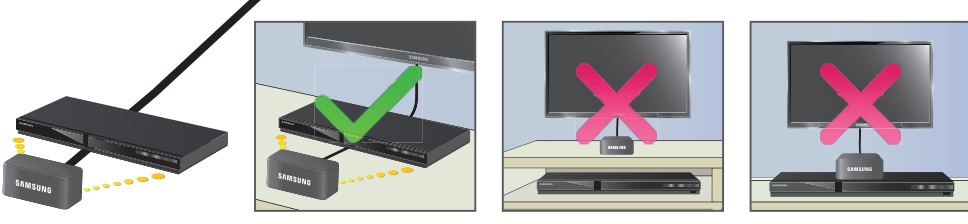
You can connect home theater systems to the OPTICAL or AUDIO OUT ports.



Connect the cable from the antenna or cable TV outlet.



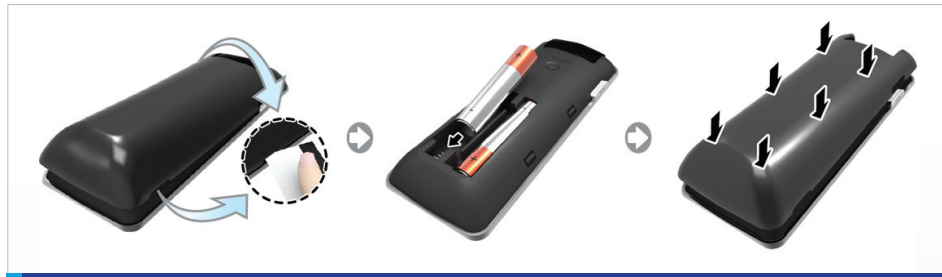
Connect the IR extender to the IR Out port to control external devices connected to the TV using the Smart Touch Control. For more detailed information, refer to the "Universal Remote Control Setup" section in the User manual.



Step 3 Using the Smart Touch Control

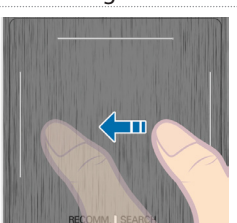
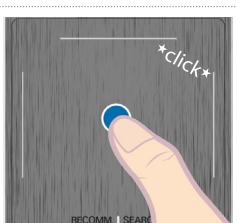
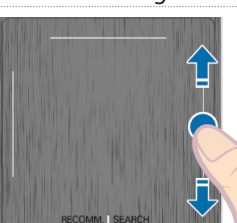
Insert the batteries into the Smart Touch Control

Insert the tip of a credit card or similar item into the notch on the side of the Smart Touch Control, and then twist the card to open and remove the remote's back cover.



The notch's location may vary depending on the type of Smart Touch Control provided.

Using the touch pad

navigation	selection	scrolling
		
To control the highlight, move your thumb across the pad.	To select an item, press the pad until you hear a click.	Move your thumb along the ridges to quickly scroll through items.

Pairing the Smart Touch Control

If you need to reestablish the connection between the TV and the Smart Touch Control, press the pairing button at the back of the Smart Touch Control, pointing at the remote control sensor of the TV.

Congratulations on your new Smart TV!

Step 4 Power on and start the initial setup

Information required:

- Wi-Fi network password (if you use one)
- Zip code
- Cable or satellite provider info

Plug in the TV. Press the power button on the remote to turn on the TV and start the initial set-up.

The TV must be connected to the Internet to use the Smart Features. If you have a wireless network, confirm that your network router is working before you start the initial setup. If you have a wired network, connect the TV to the network with a CAT 7 cable before you begin.

Troubleshooting

The stand is wobbly or crooked

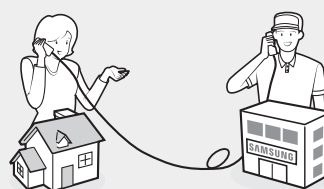
Make sure the arrows on the stand are properly aligned.

The TV won't turn on

Make sure all cables are fully inserted, and that the remote has batteries installed.

I have extra parts

The TV includes some optional parts to help with wall mounting and cable routing.



If you experience issues, please do not take the TV back to the store.

In the United States of America, call us at 1-800-SAMSUNG (1-800-726-7864) or visit us at www.samsung.com or www.samsung.com/spsn for support and warranty service.

For other countries, refer to "Contact SAMSUNG WORLDWIDE" in the user guide.