

Samsung HomeSync™

A N D R O I D D E V I C E

User Manual

Please read this manual before operating your device and keep it for future reference.



Warning! This product contains chemicals known to the State of California to cause cancer and reproductive toxicity.

Intellectual Property

All Intellectual Property, as defined below, owned by or which is otherwise the property of Samsung or its respective suppliers relating to the SAMSUNG Phone, including but not limited to, accessories, parts, or software relating there to (the “Phone System”), is proprietary to Samsung and protected under federal laws, state laws, and international treaty provisions. Intellectual Property includes, but is not limited to, inventions (patentable or unpatentable), patents, trade secrets, copyrights, software, computer programs, and related documentation and other works of authorship. You may not infringe or otherwise violate the rights secured by the Intellectual Property. Moreover, you agree that you will not (and will not attempt to) modify, prepare derivative works of, reverse engineer, decompile, disassemble, or otherwise attempt to create source code from the software. No title to or ownership in the Intellectual Property is transferred to you. All applicable rights of the Intellectual Property shall remain with SAMSUNG and its suppliers.

Open Source Software

Some software components of this product incorporate source code covered under GNU General Public License (GPL), GNU Lesser General Public License (LGPL), OpenSSL License, BSD License and other open source licenses. To obtain the source code covered under the open source licenses, please visit:

<http://opensource.samsung.com>.

Disclaimer of Warranties; Exclusion of Liability

EXCEPT AS SET FORTH IN THE EXPRESS WARRANTY CONTAINED ON THE WARRANTY PAGE ENCLOSED WITH THE PRODUCT, THE PURCHASER TAKES THE PRODUCT "AS IS", AND SAMSUNG MAKES NO EXPRESS OR IMPLIED WARRANTY OF ANY KIND WHATSOEVER WITH RESPECT TO THE PRODUCT, INCLUDING BUT NOT LIMITED TO THE MERCHANTABILITY OF THE PRODUCT OR ITS FITNESS FOR ANY PARTICULAR PURPOSE OR USE; THE DESIGN, CONDITION OR QUALITY OF THE PRODUCT; THE PERFORMANCE OF THE PRODUCT; THE WORKMANSHIP OF THE PRODUCT OR THE COMPONENTS CONTAINED THEREIN; OR COMPLIANCE OF THE PRODUCT WITH THE REQUIREMENTS OF ANY LAW, RULE, SPECIFICATION OR CONTRACT PERTAINING THERETO. NOTHING CONTAINED IN THE INSTRUCTION MANUAL SHALL BE CONSTRUED TO CREATE AN EXPRESS OR IMPLIED WARRANTY OF ANY KIND WHATSOEVER WITH RESPECT TO THE PRODUCT. IN ADDITION, SAMSUNG SHALL NOT BE LIABLE FOR ANY DAMAGES OF ANY KIND RESULTING FROM THE PURCHASE OR USE OF THE PRODUCT OR ARISING FROM THE BREACH OF THE EXPRESS WARRANTY, INCLUDING INCIDENTAL, SPECIAL OR CONSEQUENTIAL DAMAGES, OR LOSS OF ANTICIPATED PROFITS OR BENEFITS.

Modification of Software

SAMSUNG IS NOT LIABLE FOR PERFORMANCE ISSUES OR INCOMPATIBILITIES CAUSED BY YOUR EDITING OF REGISTRY SETTINGS, OR YOUR MODIFICATION OF OPERATING SYSTEM SOFTWARE.

USING CUSTOM OPERATING SYSTEM SOFTWARE MAY CAUSE YOUR DEVICE AND APPLICATIONS TO WORK IMPROPERLY. YOUR CARRIER MAY NOT PERMIT USERS TO DOWNLOAD CERTAIN SOFTWARE, SUCH AS CUSTOM OS.

Samsung Telecommunications America (STA), LLC

Headquarters:

1301 E. Lookout Drive
Richardson, TX 75082

Customer Care Center:

1000 Klein Rd.
Plano, TX 75074
Toll Free Tel: 1.888.987.HELP (4357)

Internet Address:

<http://www.samsung.com>

©2013 Samsung Telecommunications America, LLC. Samsung is a registered trademark of Samsung Electronics Co., Ltd.

Do you have questions about your Samsung Mobile Phone?

For 24 hour information and assistance, we offer a new FAQ/ARS System (Automated Response System) at:

www.samsung.com/us/support

The actual available capacity of the internal memory is less than the specified capacity because the operating system and default applications occupy part of the memory. The available capacity may change when you upgrade the device.

The Bluetooth® word mark, figure mark (stylized “B Design”), and combination mark (Bluetooth word mark and “B Design”) are registered trademarks and are wholly owned by the Bluetooth SIG.

Google, the Google logo, Android, the Android logo, Google Play, Gmail, Google Mail, Google Maps, Google Music, Google Talk, Hangouts, Picasa, YouTube and other marks are trademarks of Google Inc.

HDMI, the HDMI logo and the term “High Definition Multimedia Interface” are trademarks or registered trademarks of HDMI Licensing LLC.



Wi-Fi is a registered trademark of the Wireless Fidelity Alliance, Inc.

Microsoft® Windows XP, Windows Vista, and Windows 7 are trademarks of Microsoft Corporation.

Other company names, product names, and marks mentioned herein are the property of their respective owners and may be trademarks or registered trademarks.

DivX_{HD}®, DivX®, DivX Certified® and associated logos are trademarks of Rovi Corporation or its subsidiaries and are used under license.

DivX Certified® to play DivX® video up to HD 720p, including premium content.

ABOUT DIVX VIDEO: DivX® is a digital video format created by DivX, LLC, a subsidiary of Rovi Corporation. This is an official DivX Certified® device that has passed rigorous testing to verify that it plays DivX video. Visit www.divx.com for more information and software tools to convert your files into DivX videos.

ABOUT DIVX VIDEO-ON-DEMAND: This DivX Certified® device must be registered in order to play purchased DivX Video-on-Demand (VOD) movies. To obtain your registration code, locate the DivX VOD section in your device setup menu (tap **Applications > Settings > About phone > Legal information > License settings > DivX® VOD > Register**). Go to vod.divx.com for more information on how to complete your registration.

Table of Contents

Section 1: Getting Started4

Understanding This User Manual	4
Device Layout and Function	5
Package Contents	6
Installation	7
Restarting the Device	8
Turning On the Device	9
Connecting to a Smartphone	9
Turning Off the Device	11
Setting Up Your Device	11
Connecting to Audio Equipment	15
Troubleshooting	16

Section 2: Basics17

Features of Your Device	17
Controlling a Screen	18
Screen Mirroring	21
Using the Mirror Mouse	21
Entering Text	22

My Content Screen	22
Opening an Application	23
Apps Screen	24
Recommended Screen	25
Setting Up Accounts	25
Notifications	26
Transferring Files	27
Connecting to a Wi-Fi Network	28

Section 3: Internet and Screen

Mirroring30

Internet	30
Screen Mirroring	33

Section 4: Media34

Play Music App	34
Music Player	35
Gallery	36
Video Player	38
YouTube	39

Section 5: Application and

Media Stores 40

Media Hub 40

Play Store 41

Samsung Apps 43

Play Movies & TV 44

Section 6: Utilities 45

POLARIS Office 45

Google 46

My Files 46

Downloads 46

McAfee Virus Scan 46

Section 7: Settings 47

About Settings 47

Wi-Fi 47

Bluetooth 47

Ethernet 47

Nearby Devices 48

Play Nearby Device Content 48

Sound 48

Display 48

Storage 49

Application Manager 49

Location Services 49

Lock Screen 49

Member Management 50

Security 52

Language and Input 52

Content Backup and Restoration 53

Backup and Reset 54

Accounts 54

Mouseover 55

Audio Output 55

Date and Time 55

Accessibility 56

About Device 56

Updating the Device Software 57

Section 8: Health and Safety

Information 58

Exposure to Radio Frequency (RF) Signals ... 58

Knowing Radio Frequency Safety 58

FCC Radio Frequency Emission 58

Samsung Products and Recycling	60
Care and Maintenance	60
Operating Environment	61
Restricting Children's Access to Your Device ..	63
FCC Notice and Cautions	63
Other Important Safety Information	63

Section 9: Warranty Information	64
Standard Limited Warranty	64
End User License Agreement for Software ...	69
Index	77

Section 1: Getting Started

Use the HomeSync device to play multimedia files on large screens that support High Definition Multimedia Interface (HDMI). Install the HomeSync application on your smartphone and then use it as a mouse to control the monitor or TV.

This section helps you to quickly start using your device.

Understanding This User Manual

The sections of this manual generally follow the features of your device. A robust index for features begins on page 77.

Also included is important safety information, beginning on page 58, that you should know before using your device.

This manual gives navigation instructions according to the default display settings. If you select other settings, navigation steps may be different.

Unless otherwise specified, all instructions in this manual assume that you are starting from the **My content** screen.

Note: Instructions in this manual are based on default settings and may vary from your device depending on the software version on your device and any changes to the device's settings.

Note: All screen images in this manual are simulated. Actual displays may vary depending on the software version of your device and any changes to the device's settings.

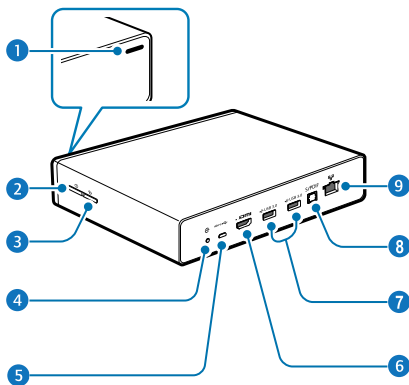
Special Text

In this manual, some text is set apart from the rest. This special text is intended to point out important information, share quick methods for activating features, define terms, and more. The definitions for these methods are as follows:

- **Notes:** Presents alternative options for the current feature, menu, or sub-menu.
- **Tips:** Provides quick or innovative methods or useful shortcuts.
- **Important:** Points out important information about the current feature that could affect performance.
- **Warning:** Brings important information to your attention that can help to prevent loss of data or functionality or damage to your device.

Device Layout and Function

The following items can be found on the side and back of your device as illustrated.



1. Notification light: The notification light alerts you to the device's status with the following colors.

- Blue (steady)
 - Network connected
 - Ready to download or upload data
- Green (steady)
 - Upcoming events
 - Application being updated
- Red (blinking)
 - Failed to recognize internal hard disk drive (HDD)
- Yellow (steady)
 - Network connection error

2. Power button: Press and hold to turn the device on or off.

Press and hold more than 8 seconds to restart the device.

3. **Functions button:** Press to confirm secure pairing with your smartphone.
Press and hold for a few seconds to capture a screenshot.
4. **Power adaptor port:** Connect a power cable to supply power.
5. **microUSB port:** Connect to a computer with a microUSB cable with Media Transfer Protocol (MTP).
6. **HDMI cable port:** Connect to a monitor (TV or computer) using an HDMI cable.
7. **USB port (3.0):** Connect a USB cable to use a compatible device (such as smartphones or cameras) or a external USB storage device.
Connect a USB cable to use a keyboard or a mouse.
8. **S/PDIF port:** Connect to audio equipment using an S/PDIF cable.
9. **LAN cable port:** Connect to a network using a LAN cable.

Note: Some items, including monitors, smartphones, and peripherals, may not be compatible with the device.

Package Contents

Check the product box for the following items. The items supplied with the device may vary depending on the region or service provider.

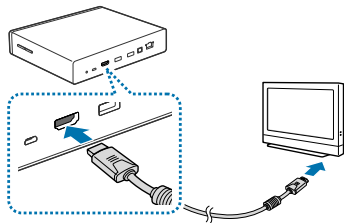
- Device
- Power adaptor/Power cord
- LAN cable
- HDMI cable

Note: You can purchase additional accessories: USB cable, S/PDIF cable, and microUSB cable. Make sure they are compatible with the device before purchase.

Installation

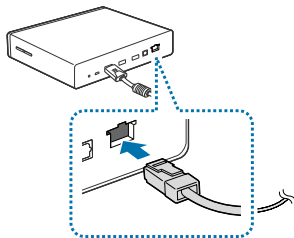
To install your device, follow these simple steps:



1. Connect the device to a monitor that supports the High Definition Multimedia Interface (HDMI) using the HDMI cable.



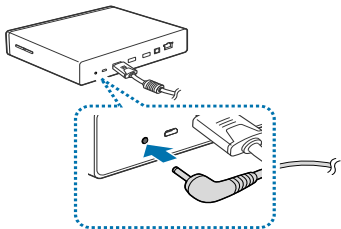
Note: For more information, refer to the user manual for the monitor.

2. Connect the device to a network by connecting the LAN cable to the LAN cable port on the device.



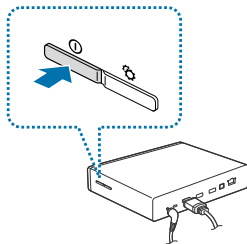
- If you connect the LAN cable after turning on the device, access **Apps** →  **Settings** → **Ethernet**, and then select **Ethernet**.
- You can let the device connect automatically to the current Wi-Fi network your smartphone uses or you can connect to a Wi-Fi network by accessing **Apps** →  **Settings** → **Wi-Fi**. However, to establish a better connection, it is recommended to connect the LAN cable.

3. Connect the power adaptor to the device, and then connect the power cord to the electrical socket.



Restarting the Device

If your device is frozen or unresponsive, press and hold the Power button for more than 8 seconds.

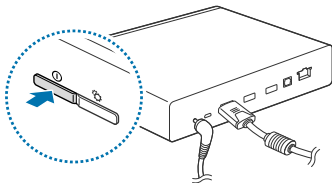


Note: Restarting may disconnect the device from your smartphone. Connect the device to your smartphone again with the NFC feature or the Bluetooth feature.

Turning On the Device

To turn on the device:

1. Press and hold the Power button.



2. Turn on the connected monitor.

Note: For better picture quality, set the screen aspect ratio on your monitor to fit its original screen or select the auto aspect ratio setting manually. If the auto aspect ratio setting is not available on your device, some parts of the screen can be cut off.

Connecting to a Smartphone

Connect and register the device to a smartphone. You can upload and download content, add and manage multiple user accounts, use the smartphone as a remote control for a TV screen or monitor (see “Controlling a Screen” on page 18), and more.

To use this feature, you must download **HomeSync** from Samsung Apps or the Google Play Store and install it on your smartphone.

Note: When your smartphone supports the Near Field Communication (NFC) feature, touch the back of your smartphone to the NFC antenna area near the center of the device to download **HomeSync**.

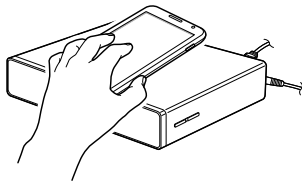
Once the device connects to a smartphone, the device will automatically reconnect to it whenever **HomeSync** is activated.

Note: For more information about compatible smartphones, refer to www.samsung.com.

When Your Smartphone Supports the NFC Feature

You can connect the device to a smartphone when your smartphone supports the NFC feature.

1. Activate the NFC feature on your smartphone.
2. To start **HomeSync**, touch the back of your smartphone to the NFC antenna area of the device.



3. Follow the on-screen instructions.

Note: The NFC antenna area of the smartphone may differ. For more information, refer to the user manual for the smartphone.

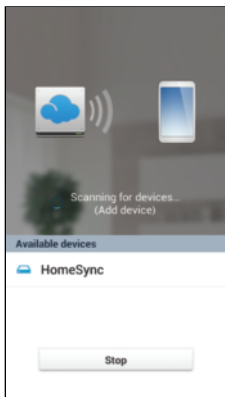
When Your Smartphone Does Not Support the NFC Feature

You can use the Bluetooth feature to connect the device to your smartphone, if your smartphone does not support the NFC feature.

1. Start **HomeSync**.
2. Touch  **Menu** → **Add device**.

To use HomeSync, you must have a Samsung account. If you have not set up your Samsung account, the Samsung account screen displays. For more information, refer to your smartphone user manual.

3. Touch **Scan for devices**.
4. Select the device name from the list of detected devices.



Note: The device name may be different for your device. For more information, refer to *“About Device”* on page 56.

5. Follow the on-screen instructions.

Turning Off the Device

To turn off the device:

- Press and hold the Power button, and then select **OK**.

For more information about how to control the screen, see *“Controlling a Screen”* on page 18.

Caution! Do not disconnect the power adaptor from the device while applications are running. Doing so may cause malfunctions or damage to the device.

Setting Up Your Device

When you first turn on your device, you are asked to set up a few things. To do that, the following screens display. Some screens can be skipped (select **Next**) or re-displayed (select **Previous**). Some screens display depending on the options you choose.

Welcome!

1. Select the **Select language** field, scroll through the list, and select the language you want your device to use, such as, English (United States), which is the default.
2. Select **Next**.

Wi-Fi

Make sure the Wi-Fi **OFF / ON** icon is set to  ON and choose one of the following options:

- Select **Add Wi-Fi network** to enter a Network SSID that is not listed.
- Select **Scan** to make sure you have an accurate list of Wi-Fi networks.
- Select one of the Wi-Fi networks in the list, enter the password, and select **Connect**. Select and connect to another Wi-Fi network or select **Next** to continue.
- Select **Next** to perform this task later. For more information, refer to “*Wi-Fi*” on page 47.

Date and Time

This screen displays if you did not connect to a Wi-Fi network.

1. Select **Select time zone** and set the correct time zone.
2. Select **Set date** and set the date (month, day, year), if necessary.
3. Select **Set time** and set the time (hour, minute, and AM or PM), if necessary.
4. Select **Next**.

End User License Agreement

1. Read the End User License Agreement for Software and check **I understand and agree to the terms and conditions above**.
2. Read the Samsung error log statement and check **Yes** or **No, thanks**.
3. Select **Next**.

Device Name

Your default device name is displayed on this screen for reference.

1. Make a note of this name. It will be displayed when you use Bluetooth, Wi-Fi Direct, and so on.
2. Select **Next**.

Note: You may change the device name at this time.


Screen Size

This screen can be used to manually set the screen size of the TV or monitor you will be using with HomeSync, which will give you a better picture display.

Tip: For better viewing, set the screen aspect ratio on your TV to the auto aspect ratio setting.

If the auto aspect ratio setting is not available on your device, some parts of the screen can be cut off.

1. Select the Screen Size field and then select **Normal**, **Scaled down 1**, **Scaled down 2**, or **Scaled down 3**.
The screen size changes as you make your selection.

Note: You can change the screen size at any time by accessing **Apps** →  **Settings** → **Display** → **Screen size**.

2. Select **Finish**.
The Setting up accounts screen displays.

Setting Up Accounts

Google applications, such as Play Store, require a Google account. Samsung Apps requires a Samsung account. The Setting up accounts screen can be used to set up both accounts.

- Select **Add account**.
The Samsung account screen displays.
– or –
- Select **Later** to proceed to the next screen.

Note: If you skipped Wi-Fi setup, the Wi-Fi setup screen displays and you must connect through a Wi-Fi network.

Samsung Account

Sign in to your Samsung account to use Samsung services.

1. Select **variety of services** to learn more.
2. Select **Sign in** if you already have a Samsung account.

– or –

Select **Create new account** to create a Samsung account.

– or –

Select **Help** to display additional information.

For more information, refer to “*Signing In to your Samsung Account*” on page 54.

The Got Google? screen displays.

Got Google?

Your device uses your Google account to fully use its Android features, such as Google Play.

The Got Google? screen can be used to sign in, if you already have a Google account.

Note: If you skipped Wi-Fi setup, the Wi-Fi setup screen displays and you must connect through a Wi-Fi network.

- Select **Yes** and then enter the email address and password of your existing account.
Select ► to continue.
- or –
- Select **No** to proceed to the next screen.

Make it Google

This screen displays if you did not sign in to your Google account.

The Make it Google screen can be used to create a new Google account.

Note: If you skipped Wi-Fi setup, the Wi-Fi setup screen displays and you must connect through a Wi-Fi network.

- Select **Get an account** or enter the email address and password of your existing account.
– or –
- Select **Not now** to perform this task later. For more information, refer to “*Setting Up Accounts*” on page 25.

Setup Complete

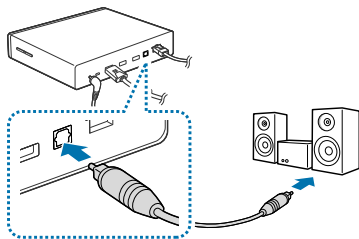
Once setup is complete, the main HomeSync screen, **My content**, displays.

Congratulations! Your device is set up and ready to use.

Connecting to Audio Equipment

You can connect the HomeSync device to audio equipment, such as home theaters.

To connect the device to audio equipment, use an S/PDIF cable.



Note: You can select a sound output format to use by accessing **Apps** →  **Settings** → **Audio output**.

Troubleshooting

Before you contact a Samsung Service Center, read the following tips for a potential solution.

Nothing appears on the screen:

- Ensure that the power adaptor and the HDMI cable are connected properly.

Some parts of screen are cut off:

- Set the screen aspect ratio on your monitor to fit its original screen or select the auto aspect ratio setting manually.

Music, video, or other media content do not play:

- Ensure that your device supports the file type.
- Some files downloaded from the Internet cannot be played.

The device is dirty:

- Wipe your device with a soft towel or an eraser. Using chemicals or detergents may discolor or corrode the outside of the device.



Data stored on the device has been deleted:

- Be sure to back up important data to another storage media (for example, Samsung Kies) before resetting the device. Samsung is not responsible for the loss of any data.

A connection is not established when the device is connected to a computer with a microUSB cable:

- You can transfer media files from a computer to the device by connecting the device with Media Transfer Protocol (MTP).
- If you are a Windows XP user, ensure that you have Windows XP Service Pack 3 or higher installed on your computer.
- Ensure that you have Samsung Kies 2.0 or Windows Media Player 10 or higher installed on your computer.

A network connection is not established when the LAN cable is connected to the device:

- If you connect the LAN cable after turning on the device, access **Apps** →  **Settings** → **Ethernet**, and then select **Ethernet**.
- If you need to use a static IP, configure settings for the static IP by accessing **Apps** →  **Settings** → **Ethernet** → **Configure Ethernet device**.

Section 2: Basics

This section outlines some key features and basic functions of your device.

Features of Your Device

The following list outlines a few of the features included in your device.

Component	Description
CPU	GAIA 1.7GHz (Cortex A15 dual)
Memory	2GB DDR3, 8GB eMMC, and 1 terabyte hard drive
Connectivity	
• Lan	Gigabit Ethernet
• Wi-Fi	802.11 b/g/n 2.4GHz & a/n 5GHz HT40 2x2 MIMO Channel Bonding
• Bluetooth	Version 4.0
• NFC Tag	Supports 8 accounts with 6 devices per account

Interface

- USB 2 external USB 3.0 connections
- MicroUSB 1 PC Connection 11pin mUSB
- HDMI Out TV mirroring
- Optical Audio Audio Amplifier Connection

Codec

- Video H.264, H.263, MPEG4, VC-1, Sorenson Spark, WMV7/8, MP43, VP8, DivX, AC3
- Audio MP3, AAC LC/AAC+/eAAC+, WMA 9std/10pro/Lossless, FLAC, Vorbis, AMR-NB/WB

DRM


HDCP 1.3/2.1, Playready, Widevine, Trustzone

Platform

Android version 4.2.2, Jelly Bean

Controlling a Screen

Control a TV or monitor screen by using your smartphone as a mouse or remote control.



1. Start **HomeSync** on your smartphone.
2. Select  **Remote control**, and then switch to the control mode you want.

Note: Available control modes may vary depending on the smartphone you use.

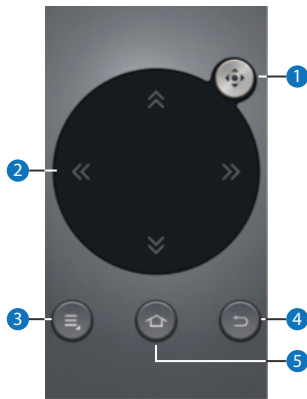
You can also connect a mouse to the USB port on the device to control a screen.

Using Remote Mouse

Use Remote Mode to control the screen by moving the smartphone and touching the control pad.

1. On your smartphone, touch  **Menu** → **Remote mouse**.
2. Control the  pointer by moving the smartphone like a wand up, down, left, or right.
3. Touch the control pad to select an app, feature, or field.


For more information about how to use the control pad, see *“Using the Control Pad”* on page 20.




1. **Remote button:** Touch to toggle between the Mouse pad and Directional keys.
2. **Control pad:** Navigate using the Mouse pad or Directional keys.
3. **Menu:** Touch to display additional options.
4. **Back:** Touch to return to the previous screen.
5. **Home:** Touch to display the Home screen.

Button Mode



Use Button Mode to control the screen by using the Touch Pad or Directional keys.

- On your smartphone, touch  **Menu** → **Button mode**.

Touch Pad

1. Touch  **Touch Pad** to display the touch pad.
2. Slide your finger across the control pad to navigate the device.
3. Touch the control pad to select an app or feature.

Directional Keys

1. Touch  **Directional keys** to display the Directional keys.
2. Use the Directional keys to highlight your selection.
3. Touch  **OK** to open an app or feature.


Using Touch Pad

Touch the control pad to move the pointer. Tap the control pad to select a field.

For more information about how to use the control pad, see “Using the Control Pad” on page 20.

Controlling the Pointer Speed

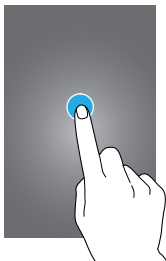
Adjust the pointer speed when using the remote mouse or touch pad.

1. On your smartphone Remote Mouse or Touch Pad screen, touch  **Menu** → **Pointer speed**.
2. Drag the slider to the left or right and select **OK**.

Using the Control Pad

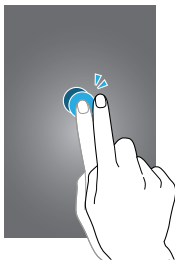
Tapping

To open an application, to select an on-screen button, or to enter a character using the on-screen keypad, tap it with your finger.







Double-Tapping

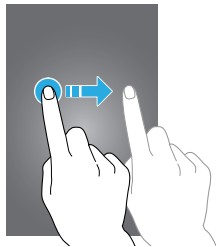
Double-tap on a webpage or image to zoom into an area. Double-tap again to return.



Dragging (Touch Pad Mode)

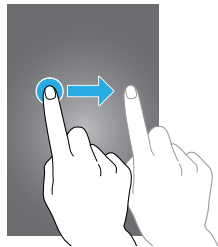
Drag left or right to move to another page when the  is changed to a  after tapping and holding the control pad.

Drag up or down to scroll through a list when the  is changed to a  after tapping and holding the control pad.





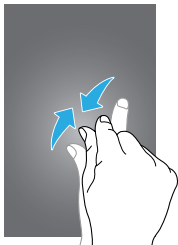
Dragging (Remote Mouse Mode)

Drag left or right to move another page by swiping left or right on the control pad. Drag up or down to scroll through a list by swiping up or down on the control pad.




Pinching

Tap and hold the control pad with two fingers, and then spread them apart on a webpage or image to zoom into an area when  is changed to . Pinch to zoom out.



Exiting the Remote Control

Double-tapping the  **Back** button will exit the Remote Control function and return the user to the main HomeSync app screen.

Screen Mirroring


Use the Screen Mirroring application to share your smartphone's display on a connected monitor.



For more information, refer to “*Screen Mirroring*” on page 33.

Using the Mirror Mouse

When you switch to the Mirror Mouse mode, the monitor screen displays on your smartphone.

Note: The Mirror Mouse feature is not available on all smartphones.

If your smartphone supports the Mirror Mouse feature, the Remote Control screen includes the  **Mirror Mouse** button.

1. Start **HomeSync** on your smartphone.
2. Select  **Remote control**.
3. Touch the  **Mirror Mouse** button.
The monitor screen displays on your smartphone.
4. Use the touch screen on the smartphone to control the monitor screen.

Entering Text

To enter text, place the cursor at the text input field and then use the keyboard that appears on the smartphone screen.

Note: You can also connect a keyboard to the USB port on the device to enter text.

On-screen Keyboard

If you connect a mouse to the USB port on the HomeSync device, an on-screen keyboard displays when you place the cursor in a text input field.

To enter text:

- Place the cursor at the text input field and click keys on the keyboard that displays on the screen.

My Content Screen

The **My content** screen is the Home screen for the HomeSync device. It provides icons for media applications (photos, music, videos, or files) at the bottom of the screen and thumbnails you can select to view content. The **My content** screen can also be used to access the **Recommended** and **Apps** screens.



1. Open the **Recommended** screen.
2. Open the **Apps** screen.
3. Open the Notifications Panel.
4. Select a preview thumbnail to open.
5. Application shortcuts to Gallery, Music Player, Video Player, and My Files.

Buttons

The following buttons display when the pointer is moved to the bottom of any screen:



Open the list of recent applications.



Open the Home screen, which is the **My content** screen for this device.



Return to the previous screen.

Tip: The above buttons are also available on the HomeSync screen on your smartphone.

The following button displays in the upper left corner of the **Recommended**, **My content**, and **Apps** screens:




Launch the Google search application.

Opening an Application

Open the **Apps** screen and select an application shortcut to open the application.

To close the application, select  **Back**.


Opening from Recently-Used Applications

Select  **Recent apps** and select an application icon to open.

Closing an Application

When you multi-task by running multiple applications at the same time, some applications may slow down. It may also cause memory shortage.

Close applications not in use to maintain device performance.

Select  **Recent apps** → **Task manager**, and then select **End** next to an application to close it.

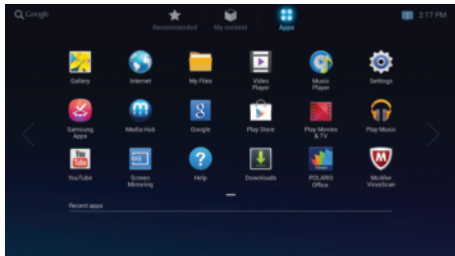
To close all running applications, select **End all**.

Apps Screen

The **Apps** screen displays icons for all applications, including any new applications installed.

- On the **My content** screen, select **Apps**.


When a new panel is added because a new application has been installed, move to another panel by dragging left or right.




Installing Applications

Use application stores, such as **Samsung Apps**, to download and install applications.

To view and manage your downloaded applications:

- On the **Apps** screen, select  **Downloads** → **Other downloads**.


– or –

On the **Apps** screen, select  **Settings** → **Application manager** → **DOWNLOADED**.

For more information, refer to “*Application and Media Stores*” on page 40.

Uninstalling Applications




To uninstall applications:

1. On the **Apps** screen, select  **Settings** → **Application manager** → **DOWNLOADED**.
2. Select the application you want to uninstall.
3. Select **Uninstall**.

Note: Default applications that come with the device cannot be uninstalled.

Managing Applications

To manage Samsung Apps and Play Store applications:

- On the **Apps** screen, select  **Samsung Apps** or  **Play Store** and then select  .

Recommended Screen

The **Recommended** screen displays recommendations from, and a shortcut to, Media Hub.

1. On the **My content** screen, select **Recommended**.
2. Select **Media Hub** to launch the Media Hub application.

For more information, refer to “*Media Hub*” on page 40.

Setting Up Accounts

Google applications, such as **Play Store**, require a Google account, and **Samsung Apps** requires a Samsung account. Create Google and Samsung accounts to have the best experience with the device.

For more information, refer to “*Adding Accounts*” on page 54.


Adding Accounts

To set up a Google account, follow the instructions that appear when opening a Google application.

Note: You must set up Wi-Fi before you can add a Samsung or Google account. For more information, refer to “*Connecting to a Wi-Fi Network*” on page 28.


Samsung Account

To set up a Samsung account:

1. On the **Apps** screen, select  **Settings** → **Add account** → **Samsung account**.
2. Select **Sign in**, if you already have a Samsung account.
– or –
Select **Create new account** to create a Samsung account.
3. Follow the on-screen instructions to complete the account setup.

Google Account


To sign in with or sign up for a Google account:

1. On the **Apps** screen, select  **Settings** → **Add account** → **Google**.
the Add a Google Account screen displays.
2. Select **Existing**, if you already have a Google account.
– or –
Select **New** to sign up.
3. Follow the on-screen instructions to complete the account setup.


Note: More than one Google account can be used on the device.

Removing Accounts


To remove an account:

1. On the **Apps** screen, select  **Settings** and select an account name under Accounts.
2. Select the account to remove.
3. Select **Remove account**.

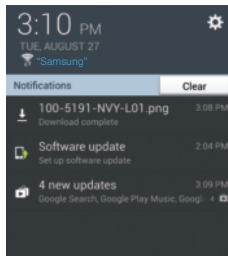
Notifications


Notifications appear in the Notifications Panel. When you have notifications,  displays in the upper right corner of the **Recommended**, **My content**, and **Apps** screens next to the time. The number of notifications displays in the icon.

To view the Notifications Panel:

1. On the **Recommended**, **My content**, or **Apps** screen, select .

The Notification Panel displays.



2. Select  **Settings** to open the Settings application.
For more information, refer to “Settings” on page 47.

3. **Notifications** displays system notifications. Select a notification entry to display the details.
4. Select **Clear** to remove Notifications from the Notifications Panel.

Transferring Files



Once HomeSync is activated, photos and videos taken with registered devices, such as smartphones and cameras, can be uploaded to the device automatically. You can also connect a USB storage device to transfer media files.

The following file formats are supported by some applications. Some file formats are not supported depending on the version of the device's software or the computer operating system.

- **Music:** mp3, aac, wma/asf, flac, ogg, amr, wav, 3ga/m4a, and mid
- **Image:** bmp, gif, jpg, and png
- **Video:** avi, wmv/asf, flv, mkv, mp4/3gp, and webm
- **Document:** doc, docx, dot, dotx, rtf, xls,xlsx, xlt, xlsx, csv, ppt, pptx, pps, ppsx, pot, potx, pdf, hwp, txt, asc, and Password-protected MS office files

Manually Uploading Pictures

To manually upload pictures:

1. Open the  **Gallery** app.
2. Select and hold a picture to select it.
3. Select any other pictures to include them for manual upload.
4. Select  **More options** → **Share via** and follow the on-screen instructions.

Setting Automatic Uploading

When you connect your smartphone or camera to the device for the first time, a pop-up window for automatic uploading displays.

- Select **Yes**, and then follow the on-screen instructions.
– or –

On your smartphone HomeSync screen, select **Setting** → **Auto upload** and follow the on-screen instructions.

Photos and videos you take with a smartphone or camera that currently uses the HomeSync application will be uploaded to the device.

Connecting to a PC

1. Connect the device to the computer using the microUSB cable.
2. Open My computer folder and double-click the device name.
3. Transfer files between the computer and the device.
4. Remove the microUSB cable from the device.

Notes:

- Do not remove the microUSB cable from the device while transferring files. Doing so may result in the loss of data or damage to your device.
- MacOS computers require an additional tool called Android File Transfer, which is provided by Google.
- Do not disconnect the device from a computer while the computer is playing a file stored on your device. Stop playback before disconnecting the device from the computer.
- Your device may not be recognized if you connect it to a USB hub. Connect your device directly to a USB port on a computer.

Connecting to a Wi-Fi Network

Connect the device to a Wi-Fi network to use the Internet or share media files with other devices.

Turning Wi-Fi On and Off

To turn Wi-Fi on or off:

- On the **Apps** screen, select  **Settings** → **Wi-Fi**, and then drag the **Wi-Fi OFF / ON** icon to set it  ON.

Joining Wi-Fi Networks

To join a Wi-Fi network:

1. Select a network from the list of detected Wi-Fi networks.
2. Enter a password if necessary, and then select **Connect**.

Networks that require a password appear with a lock icon. After the device connects to a Wi-Fi network, the device will automatically connect to it any time it is available.

Adding Wi-Fi Networks

If the desired network does not appear in the networks list:

1. Select **Add Wi-Fi network** at the bottom of the networks list.
2. Enter the network name in **Network SSID**.
3. Select the security type and enter the password if it is not an open network.
4. Select **Connect**.

Section 3: Internet and Screen Mirroring

Once you connect your HomeSync device to Wi-Fi, it can access the internet. Also, Screen Mirroring can be used to display your smartphone screen on your TV or monitor.

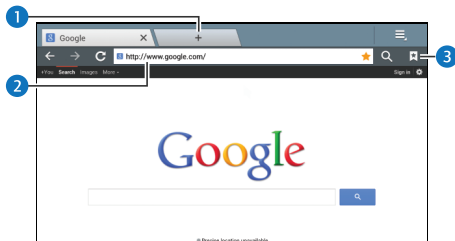
Internet

Use this application to browse the Internet.

- On the **Apps** screen, select  **Internet**.

Connect the device to a Wi-Fi network before using the Internet. For more information, refer to “*Connecting to a Wi-Fi Network*” on page 28.

Enter the web address in the address field with the keyboard that appears on your smartphone’s **HomeSync** screen, and then select **Go**.




1. Open a new window.
2. Enter a web address or a keyword.
3. View your bookmarks, saved pages, and recent Internet history.

Navigating the Internet


The following options are available for Internet navigation.

Command Keys


To return to the previous page:

- Select  **Back**.

– or –

Select  **Back** at the bottom of the screen.

To go forward to a recent page:





- Select  **Forward**.

To reload the current page:

- Select  **Refresh**.

Using Browser Windows

You can have multiple windows open at one time and easily switch between windows.


1. On the **Apps** screen, select  **Internet**.
2. To open a new window, select  **New tab** or  **More options** → **New tab**.
3. To switch to another open window, select its tab at the top of the screen.
4. To delete an open window, select the tab at the top of the screen, and then select .

Bookmarks

To bookmark the current webpage:

- Select .

To open a bookmarked webpage:


- Select  **Bookmarks** → **Bookmarks**, and then select the bookmark.

History



To open a webpage from the list of recently-visited webpages:

- Select  **Bookmarks** → **History**, and select the webpage.

To open a webpage from the list of most visited webpages:

- Select  **Bookmarks** → **History** → **Most visited**, and select the webpage.

To clear the history:

- Select  **Bookmarks** →  **More options** → **Clear history**.

Links


- Select and hold a link on the webpage to open it, open it in a new window, save it, or copy the link URL.

Download Images


To save and download an image:

- Select and hold the image and select **Save image**.

To check downloaded files:


- Select  **More options** → **Downloads**.

– or –

On the **Apps** screen, select  **Downloads**.

Sharing Webpages

To share a webpage address with others:


- Select  **More options** → **Share page**.

Screen Mirroring

Use this application to share your smartphone's display on a connected monitor.

Note: This feature is not available on all smartphones.

Using Screen Mirroring on the Device

1. On the **Apps** screen, select  **Screen Mirroring**.

Instructions display on the screen.

2. On your smartphone, activate the screen mirroring feature and select the device name.

The screen of your smartphone or camera that currently uses the **HomeSync** application appears on the monitor screen.

Section 4: Media

This section explains how to use the media features of your device including the Play Music app, Music Player, the Gallery, the Video Player, and YouTube.

Play Music App


The Play Music app contains a music player that plays music and other audio files that you copy from your computer or online store.

Note: Some options described in this manual may not be available until you sign in to your Google account.

Google Play Music

Google Play Music is a new service from Google that gives you instant access to your personal music collection on the Internet and your compatible Android devices without the hassle of wires or syncing. For more information, visit music.google.com.


Accessing the Music App

- On the **Apps** screen, select  **Play Music**.

The Play Music app searches your online library and your device's internal storage for music and playlists. This can take from a few seconds to several minutes, depending on the amount of new music added since you last opened the application.

Shopping for Music at the Play Store


To visit the Google Play Store where you can find and buy music:

1. On the **Apps** screen, select  **Play Store**.
2. Select **MUSIC**.

The Google Play Store music section displays.

Music Player

Use this application to listen to music.

- On the **My content** screen, select **Music Player**.
– or –
On the **Apps** screen, select  **Music Player**.

Note: Some file formats are not supported depending on the device's software version.

Note: Some files may not play properly depending on the encoding used.

Playing Music

Select a category, and then select a song to play.

Select the album image to open the music player screen.




1. View file details.
2. Open the playlist.
3. More options.
4. Turn on shuffle.
5. Select and drag the end of the progress bar to scan forward or backward through the current song.



- Restart the currently-playing song or skip to the previous song. Select and hold to move backwards quickly.
- Pause and resume playback.
- Skip to the next song. Select and hold to move forwards quickly.
- Change the repeat mode.

Creating Playlists

Make your own selection of songs.


- Select  **Add to playlist** → **New playlist**, and then enter a title.
- Select **OK**.

To add the currently-playing song to a playlist:

- Select  **Add to playlist** and select the playlist.
- to add songs, select  or select **Add all** to select all songs.
- Select Done.

Playing Music By Mood


Play music grouped by mood. The playlist is automatically created by the device.

- When a new song is added, select **Music square** →  **Library update**.

Note: At least 25 music files are required to play in Music square.

Gallery



Use the Gallery application to view images.

- On the **My content** screen, select **Gallery**.
– or –
On the **Apps** screen, select  **Gallery**.

Launching **Gallery** displays available folders or albums.

Viewing Images in a Slideshow

To view images in a slideshow:

1. Select a folder to open it.
2. Select and hold an image, and then select images.
A  check mark displays on selected images.
3. Select  **Slideshow**.
4. Select effects, music, speed, and so on.
5. Select **Start**.




Playing Videos

Video files show the  icon on the preview.

- Select a video to watch it.
For more information, refer to “*Video Player*” on page 38.

Editing Images

When viewing an image:

1. To delete the image, select  **Delete**.
2. To start an image slideshow, select  **Slideshow**.
3. Select  **More options** and use the following functions:
 - **Favorite**: Make the image a favorite.
 - **Change player**: View the image using AllShare.
 - **Share via**: Share the image.
 - **Rename**: Rename the file.
 - **Rotate left**: Rotate counter-clockwise.
 - **Rotate right**: Rotate clockwise.
 - **Crop**: Resize the blue frame to crop and save the image in it.
 - **Print**: Print with a USB or Wi-Fi connection. The device is only compatible with some Samsung printers.
 - **Details**: Show file details.

Video Player

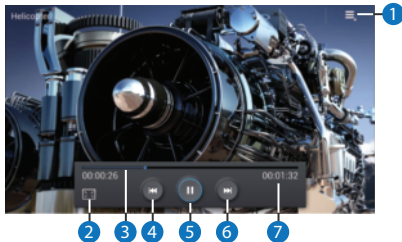
Use this application to play videos.

- On the **My content** screen, select **Video Player**.
– or –

On the **Apps** screen, select  **Video Player**.

Playing Videos

- Select a video to play.



1. Select **More options** and use the following functions:
 - **Share via**: Share the video.
 - **Change player**: View the video using AllShare.
 - **Chapter preview**: If chapter information is recorded in the video file, display the chapters. Select a chapter to begin playing the video at that point.
 - **Video auto off**: Set the option Off or set your video to turn off automatically by selecting one of the time values.
 - **Settings**: Select this option to view the following:
 - **Capture**: Turn On or Off the Capture mode.
 - **Play speed**: Select and drag the slider to decrease or increase play speed.
 - **Subtitles**: View subtitles for the video, if available.
 - **Details**: Provides details about the video, such as Name, Size, Resolution, and so on.
2. Change screen ratio.
3. Move forwards or backwards by dragging the progress bar.

4. Restart the current video or skip to the previous video. Select and hold to move backwards quickly.
5. Pause and resume playback.
6. Skip to the next video. Select and hold to move forwards quickly.
7. Indicates elapsed time and total video length in hours, minutes, and seconds.

YouTube


Use this application to watch videos from the YouTube website.

- On the **Apps** screen, select  **YouTube**.

Note: This application may not be available depending on the region or service provider.

Watching Videos

To find and watch a video:

1. Select , and then enter a keyword.
2. Select one of the returned search results to watch a video.



Section 5: Application and Media Stores

This section describes the various application and media store applications available on your device such as Media Hub, Play Store, Play Movies & TV, and Samsung Apps.

Note: Some options described in this manual may not be available until you sign in to your Google account.

Media Hub

Use this application to access multimedia files.

1. On the **Recommended** screen, select **Media Hub**.
– or –
On the **Apps** screen, select  **Media Hub**.
2. For more information, select  **More options** → **Help**.
– or –
3. Visit samsung.com/us/mediahub/.

Media Hub Notices


- Any media item (Media Content) may be rented or purchased after you create an account in Media Hub.
- Media Content that is downloaded may be viewed concurrently on up to five (5) devices with Media Hub that are also registered to the same account.
- You may choose to remove a device from your account no more than once every 90 days.
- You may remove Media Content from a device as many times as you like. You will have the ability to re-download the Media Content at a later point in time subject to content re-download availability and studio permissions.
- You **MUST** be in network coverage to license Media Content you have acquired through the Service.
- You can use Wi-Fi connectivity in order to download Media Content.


- Unlike purchased Media Content, rented Media Content will be viewable on only 1 device in your account.
- Your Media Content may pause/stop or not download in networks where there is a weak signal.
- You may begin watching downloaded Media Content as soon as a) license acquisition has occurred and b) sufficient amount of the Media Content has been buffered.
- You must finish watching rented Media Content within 24 consecutive hours of start of playback.
 - Stopping, pausing, or restarting rented Media Content does not extend the available viewing time.
 - In no event will rented Media Content be available for a period of more than thirty (30) days (or shorter on a title-by-title basis) after the Media Content has been rented (e.g., if you begin viewing rented Media Content on the 29th day after the rental transaction, but do not finish viewing the entire title, that rented Media Content may not be available for the entire twenty-four (24) consecutive hour period if such period would extend the viewable time beyond the thirty (30) day rental window).
- You cannot play any media content downloaded from Media Hub through any output on your mobile device, including All Share.

Play Store

Use this application to purchase and download applications, games, movies, TV videos, and music that are able to run on the device.

1. On the **Recommended** screen, select **Play Store**.
– or –


On the **Apps** screen, select  **Play Store**.

2. Select  **More options** → **Help** for more information.

Note: This application may not be available depending on the region or service provider.


Installing Applications

To find, purchase, and install applications from Play Store:

1. Browse applications by category or select  to search with a keyword.
2. Select an application to view information.
3. To download it, select **Install**.


If there is a charge for the application, select the price, and follow the on-screen instructions to complete the purchase process.

Note: When a new version is available for any installed application, a notification displays in the Notifications Panel to alert you of the update. Open the Notifications Panel and select the entry to update the application.

Note: To install applications that you downloaded from other sources, on the **Apps** screen, select  **Settings** → **Security** → **Unknown sources**.

Uninstalling Applications

To uninstall the applications purchased from Play Store:

1. On the **Recommended** or **Apps** screen, select **Play Store** → .
2. Select an application to delete in the list of installed applications.
3. Select **Uninstall**.

Tip: Applications downloaded and installed from Play Store can also be uninstalled using Application manager. For more information, refer to “*Uninstalling Applications*” on page 43.

Samsung Apps

Use this application to purchase and download dedicated Samsung applications. For more information, visit www.samsungapps.com.


1. On the **Recommended** screen, select **Samsung Apps**.
– or –

On the **Apps** screen, select  **Samsung Apps**.

Note: This application may not be available depending on the region or service provider.

Installing Applications


To find, purchase, and install applications from Samsung Apps:

1. Browse applications by category or select  to search with a keyword.
2. Select an application to view information.
3. To download it, select **Download**.


Note: When a new version is available for any installed application, a notification displays in the Notifications Panel to alert you of the update. Open the Notifications Panel and select the entry to update the application.

Uninstalling Applications

To uninstall the applications purchased from Samsung Apps:

1. On the **Recommended** or **Apps** screen, select **Samsung Apps** →  .
2. Select the **All** tab.
3. Select **Remove**.
4. Select an application to delete in the list of installed applications or select **Select all**.
5. Select **Remove**.

To uninstall free applications downloaded from Samsung Apps:

1. On the **Apps** screen, select  **Settings**.
2. Select **Application manager** and select the **DOWNLOADED** tab.
3. Select an application to uninstall in the list of downloaded applications.
4. Select **Uninstall**.

Play Movies & TV

Use this application to watch, download, and rent movies or TV shows.


1. On the **Apps** screen, select  **Play Movies & TV**.
2. Select  **More options** → **Help** for more information.

Section 6: Utilities

This section describes the various utility applications available on your device such as POLARIS Office, Google search, My Files, Downloads, and McAfee Virus Scan.


POLARIS Office


POLARIS Office can be used to view documents in various formats, including spreadsheets and presentations.

- On the **Apps** screen, select  **POLARIS Office**.

Note: Some functions may not be available, depending on the file type.

Reading Documents

1. Select **Form type**, **Browser**, or **Favourites**, and then select a file to open.
2. To search for a text string in a document, select .


3. After opening a document, select  **More options** and use the following functions:
 - **Zoom in/Out:** Enlarge or reduce the display of the document.
 - **Bookmark:** Bookmark the current page (documents only).
 - **View Settings:** Change the view mode settings (documents only).
 - **Read All:** Let the device read all the text aloud (documents only).
 - **Slide note:** Edit memos on slides (presentations only).
 - **Freeze frame:** Keep the selected row in place (spreadsheets only).
 - **Screen capture:** Capture an image of the screen.
 - **View information:** View information about the file.

Google

To search the Internet:

1. On the **Apps** screen, select  **Google**.




Note: To open Search on the **Recommended**, **My content**, and **Apps** screens, select .

2. Use the keyboard on your smartphone to enter search criteria to display matching searches.
Suggestions display below the text entry area.
3. Select a suggestion to search for that term.
– or –
Select  on your smartphone keyboard to start the search.

The search results display.


My Files

Use the My Files app to access all kinds of files stored in the device including images, videos, songs, and sound clips.

1. On the **Apps** screen, select  **My Files**.
2. Select a folder to open it.
3. Select  to go back to the parent folder or select  to return to the root directory.


Downloads

Use this application to see what files are downloaded through the applications.

1. On the **Apps** screen, select  **Downloads**.
2. To see the files downloaded from the Internet, select **Internet downloads**. To see the files downloaded from other applications, select **Other downloads**.
3. Select a file to open it with an appropriate application.

McAfee Virus Scan


The McAfee virus scan application check for infection and deletes it to protect your device from malware and viruses.

1. On the **Apps** screen, select  **McAfee virus scan**.
2. Follow the on-screen instructions.

Section 7: Settings


About Settings

Use this application to configure the device, set application options, and add accounts.

1. On the **Apps** screen, select  **Settings**.
2. Scroll up or down for more options.

Wi-Fi


Activate the Wi-Fi feature to connect to a Wi-Fi network and access the Internet or other network devices.

1. To search for available Wi-Fi networks, select **Scan**.
2. To search for Wi-Fi Direct devices, select **Wi-Fi Direct**.
3. To use options, select  **More options** and use the following functions:
 - **Advanced**: Customize Wi-Fi settings.
 - **WPS push button**: Connect to a secured Wi-Fi network with a WPS button.
 - **WPS PIN entry**: Connect to a secured Wi-Fi network with a WPS PIN.

Setting Network Notification

The device can detect open Wi-Fi networks and display a notification in the Notifications Panel to notify when available.

To activate this feature:

- On the **Settings** screen, select **Wi-Fi** →  **More options** → **Advanced** and select **Network notification**.

Bluetooth

Use the Bluetooth feature to connect the device to a smartphone.

Ethernet

Activate the Ethernet feature to connect to a local area network, the Internet, or other network devices.

Nearby Devices

Search for other DLNA-enabled devices on the same Wi-Fi network and allow the devices to share media files.

- **File sharing:** Activate media sharing to allow other DLNA-enabled devices to access media files on your device.
- **Shared contents:** Set to share your content with other devices.
- **Allowed devices list:** View the list of devices that can access your device.
- **Not-allowed devices list:** View the list of devices that are blocked from accessing your device.
- **Download to:** Select a memory location for saving media files.
- **Upload from other devices:** Set to accept uploads from other devices.

Play Nearby Device Content

Specify devices for playing media files from other DLNA-enabled devices on your monitor.

- **Allowed devices list:** View the list of devices that can access your device.
- **Denied device list:** View the list of devices that are blocked from accessing your device.

- **Access control:** Set whether or not to allow other DLNA-enabled devices to access your device.

Sound

Change settings for various sounds on the device.

- **Volume:** Adjust the volume level for music and videos, system sounds, and notifications.
- **Default notification sound:** Select a ringtone for events, such as incoming messages and alarms.

Display

Change the settings for the display.

- **Screen size:** Adjust the screen size by selecting **Normal**, **Scaled down 1**, **Scaled down 2**, or **Scaled down 3**. The screen size changes as you make your selection.
- **Daydream:** Select a background type for the screen saver.
- **Font style:** Change the font type for the display text. You can download fonts from Play Store by selecting **Get fonts online**.
- **Font size:** Change the font size for creating or showing items in applications.


Storage

View memory information for your device.

Note: The actual available capacity of the internal memory is less than the specified capacity because the operating system and default applications occupy part of the memory.

Application Manager

View and manage the applications on your device.

1. Select **DOWNLOADED** to view a list of all the downloaded applications on your device. Select  **More options** and use the following functions:
 - **Sort by size / Sort by name:** Switch the order of the lists displayed in the DOWNLOADED tabs.
 - **Reset app preferences:** Reset your application preferences.
2. Select an application to view and update information about the application, including memory usage, default settings, and permissions.

3. Select the **RUNNING** tab.
All the applications that are currently running on the device display.
4. Select **Show cached processes** to display all the cached processes that are running. Select **Show services in use** to switch back.

Location Services

Change settings for location information permissions.

- **Access to my location:** Set to use your current location for Google search and other Google services.
- **Use wireless networks:** Set to use the Wi-Fi network for finding the current location.

Lock Screen

Change settings for the locked screen.

Member Management

Change the administrator or add guests who have Samsung accounts and manage their accounts.

Adding an Administrator

As indicated on the **Member management** screen, you can add an administrator by using the HomeSync application on your smartphone.

1. On your smartphone, launch the HomeSync app.
2. Sign in to your Samsung account.
3. Connect with the HomeSync device.

Your Samsung account displays on the HomeSync Member management screen as the registered administrator. To change administrators, refer to *“Changing Administrator”* on page 51.

Setting Up User Profiles

The administrator can add guests who have Samsung accounts and each guest can then access the device.

Adding Multiple Users

To add multiple guests and manage the accounts:

1. Select **Member management** →  **Add**.


As indicated on the Add guest popup, guest requests can be made by completing the easy setup process on the guest device with the HomeSync App. If their device does not support NFC, they must tap the add device button. When their request is granted, they will be registered as a guest user of HomeSync.

2. Touch **OK** to register guests in advance.
3. Enter the administrator's Samsung account email address and password, and select **OK**.
4. Enter a Samsung account email address of a guest, and then select **OK**.

The guest who uses the HomeSync application can access the device.

Remote Guest Requests

A guest can make a request to be registered as a guest user of the HomeSync device.

1. On your smartphone, launch the HomeSync app.
2. Sign in to your Samsung account.
3. Touch  **Menu** → **Request guest requests**.
The Remote guest requests popup displays.
4. Enter the administrator's email address to send a guest request directly to their device.

Setting Up Private Storage

The device provides shared, personal, and private storage. An administrator or each guest can create a secure sector by setting a password for one's private storage.

To set a password for the private storage:

- Start **HomeSync** → **Private** on your smartphone.

To reset the password for the private storage:


- Select **Member management** →  **More options** → **Reset password**.

You can also reset the password on the HomeSync application.

Note: Make sure that your smartphone and the device are within the maximum Bluetooth range (10 m).

Changing Administrator

To change the device administrator account:

1. On the HomeSync main screen on your smartphone, select **Setting** → **Member management** →  **Menu** → **Change administrator**.
2. Choose one of the guest accounts to become the new administrator.
3. Select **Done**, then sign in with the current administrator's account information.

Security

Change settings for securing the device.

- **Firewall:** Activate an Internet firewall to protect your data from unapproved access.
- **Make passwords visible:** Set the device to display passwords as they are entered.
- **Device administrators:** View device administrators installed on the device. You can allow device administrators to apply new policies to the device.
- **Unknown sources:** Choose to install applications from any source. If not chosen, download applications only from Play Store.
- **Verify apps:** Set the device to block or warn you before installing suspicious applications.
- **Trusted credentials:** Use certificates and credentials to ensure secure use of networks.
- **Install from device storage:** Install encrypted certificates stored on the USB storage.
- **Clear credentials:** Erase the credential contents from the device and reset the password.

Language and Input

Change the settings for text input.

- **Language:** Select a display language for all menus and applications.
- **Default:** Select a default keyboard type for text input.
- **Google voice typing:** Select to automatically use Google voice typing. To change the settings, select **Settings** below **Google voice typing**. The following options are available:
 - **Choose input languages:** Select **Automatic** to use the local language or select a language from the list.
 - **Block offensive words:** Enable or disable blocking of recognized offensive words from the results of your voice-input Google searches. When enabled, a check mark appears in the check box.
 - **Download offline speech recognition:** Enable voice input while offline. Select the **All** tab to download speech recognition for other languages.

- **Samsung keyboard:** To change the Samsung keyboard settings, select **Settings** below **Samsung keyboard**.
 - **Input languages:** Select languages for text input.
 - **Predictive text:** Activate predictive text mode to predict words based on your input and show word suggestions. You can also customize the word prediction settings.
 - **Continuous input:** Set to enter text by sweeping on the keyboard.
 - **Advanced:** Change the advanced settings.
 - **Tutorial:** Learn how to enter text with the Samsung keyboard.
 - **Reset settings:** Reset Samsung keyboard settings.
- **Text-to-speech options:** Customize the settings for speech synthesis engines.
- **Pointer speed:** Adjust the pointer speed for the mouse or trackpad connected to your device.

Content Backup and Restoration

Back up or restore data by connecting an external USB storage device to the USB port (3.0).

Backing Up Data

1. Select **Content backup and restoration** → **Back up**.
2. Sign in to your Samsung account.
3. Select which data to back up and then select **Start backup**.

Caution! When you back up encrypted data to an external USB storage, the data is decrypted and anyone who uses the external USB storage can see it.

Restoring Data

1. Select **Content backup and restoration** → **Restore**.
2. Sign in to your Samsung account.
3. Select **Start restore**.

Caution! When you restore your private data, the data is encrypted again.

Backup and Reset

Change the settings for managing settings and data.

- **Back up my data:** Set to back up settings and application data to the Google server.
- **Backup account:** Set up or edit your Google backup account.
- **Automatic restore:** Set to restore settings and application data when the applications are reinstalled on the device.
- **Factory data reset:** Reset settings to the factory default values and delete all data.

Accounts


Add a Google or Samsung account to use.

Adding Accounts

Signing In to your Samsung Account

Several applications and options require that you create and sign in to a Samsung Account.

To sign in to your Samsung account:

1. On the **Apps** screen, select  **Settings** → **Add account**.
2. Select **Samsung account**.
The Samsung account sign in screen displays.


3. Select **variety of services** to display information about Samsung services that are available.
4. If you have no Samsung account, select **Create new account**.
– or –
If you do have a Samsung account, select **Sign in**.
The Samsung account screen displays.
5. Use the keyboard on your smartphone to enter the required information and select **Sign up** or **Sign in**.

Tip: The password is for your Samsung account, not the password you use for the email address you are entering. Plus, you can use only letters, numbers, !, @, \$, %, &, ^, and * for your Samsung account password.

6. If you are creating a new account, the Terms and conditions screen displays. Read the Terms and conditions, Special terms, and Privacy policy and select **I accept all the terms above**.
The Settings screen displays with Samsung account listed under Accounts.

Adding Google Accounts


To add a Google account:

- Follow the instructions that display when you open a Google application that requires a Google account.
– or –
- 1. On the **Apps** screen, select  **Settings** → **Add account** → **Google**.
- 2. Select **Existing** or **New**.
- 3. Follow the on-screen instructions to complete the account setup.

Note: More than one Google account can be used on the device.

Removing Accounts

To remove accounts:

1. On the **Apps** screen, select  **Settings**.
2. Select an account name under **Accounts**.
3. Select the account to remove and then select **Remove account**.

4. On the Remove account? pop-up, select **Remove account**.

Mouseover

Set the options for previewing the content or viewing information in pop-up windows when you hold the mouse pointer near an option or button.

Audio Output

Select a sound output format to use when connecting your device to HDMI devices.

Date and Time

Access and alter the following settings to control how the device displays the time and date.

- **Select time zone:** Set the home time zone.
- **Set date:** Set the current date manually.
- **Set time:** Set the current time manually.
- **Use 24-hour format:** Display time in 24-hour format.
- **Select date format:** Select a date format.


Accessibility

Accessibility services are special features for those with certain physical disabilities. Access and use the following settings to improve accessibility to the device.


- **Services:** Activate an accessibility application you have downloaded, such as Talkback or Kickback, which provide voice, melody, or vibration feedback.
- **Font size:** Change the font size.
- **Text-to-speech options:** Customize settings for speech synthesis engines.
 - **Preferred TTS engine:** Select a speech synthesis engine.
 - **Speech rate:** Select a speed for the text-to-speech feature.
 - **Listen to an example:** Listen to the spoken text for an example.
- **Enhance web accessibility:** Set applications to install web scripts to make their web content more accessible.

About Device

View information about your device, including status, legal information, hardware and software versions, and battery use.

- On the **Apps** screen, select  **Settings** → **About device** and select items to view details:
 - **Software update:** Connect to the network and download new software. For more information, refer to “*Updating the Device Software*” on page 57.
 - **Status:** View the status of IP address, Wi-Fi MAC address, and other device information.
 - **Legal information:** Display **Open source licences**, **Google legal**, **Samsung legal**, **Privacy Alert**, and **License settings** information.

Tip: To find your device’s DivX[®] registration code and information about registering your device to play DivX protected video, select **License settings** → **DivX[®] VOD**.


- **Device name:** Display your device's name. To change the device name, select  to display the Device name pop-up, enter a new name, and select **OK**.
- **Model number:** Display your device's model number.
- **Android version:** Display the firmware version of your device.
- **Kernel version:** Display the kernel version of your device.
- **Build number:** Display your device's build number.

Updating the Device Software

Software is regularly upgraded to the higher version. Update the device to the latest version for optimized user interface.

Note: The device can be directly upgraded to the latest software by the Firmware Over-The-Air (FOTA) service.

Upgrading Over the Air (FOTA)

1. On the **Apps** screen, select  **Settings** → **About device**.
2. Select **Software update**.
3. Select **Update**.
 - When using this function for the first time, follow the on-screen instructions. Select your country and complete the process.
 - The device is automatically connected to the server when there are available updates.

Section 8: Health and Safety Information

This device is capable of operating in Wi-Fi mode in the 2.4 and 5 GHz bands. The FCC requires that devices operating within 5.15-5.25 GHz may only be used indoors, not outside, in order to avoid interference with Mobile Satellite Services (MSS). Therefore, do not use this device outside as a Wi-Fi hotspot or in Wi-Fi Direct mode when using the 5.15-5.25 GHz band.

This section outlines the safety precautions associated with using your HomeSync device. The terms “HomeSync” or “device” are used in this section to refer to your HomeSync device. **Read this information before using your device.**

Exposure to Radio Frequency (RF) Signals

HomeSync operates as a radio transmitter and receiver (Wi-Fi). When it is turned on, it receives and transmits radio frequency (RF) signals. This power can range from 0 microwatts to 25 milliwatts (maximum power: 13.5 dBm).

Knowing Radio Frequency Safety

The design of your HomeSync complies with updated NCRP standards described below:

In 1991–92, the Institute of Electrical and Electronics Engineers (IEEE) and the American National Standards Institute (ANSI) joined in updating ANSI’s 1982 standard for safety levels with respect to human exposure to RF signals. More than 120 scientists, engineers and physicians from universities, government health agencies and industries developed this updated standard after reviewing the available body of research.

In 1993, the Federal Communications Commission (FCC) adopted this updated standard in a regulation. In August 1996, the FCC adopted a hybrid standard consisting of the existing ANSI/IEEE standard and the guidelines published by the National Council of Radiation Protection and Measurements (NCRP).

For more information about RF exposure, visit the FCC Web site at www.fcc.gov.

FCC Radio Frequency Emission

This device meets the FCC Radio Frequency Emission Guidelines. FCC ID number: **A3LGTB9150** [Model Number: GT-B9150].

FCC Radiation Exposure Statement

This equipment complies with FCC radiation exposure limits set forth for an uncontrolled environment. This equipment should be installed and operated with a minimum distance of 20 cm between the HomeSync device and your body.

Federal Communications Commission (FCC) Interference Statement

This device complies with Part 15 rules. Operation is subject to the following two conditions:

1. This device may not cause harmful interference, and
2. This device must accept any interference received, including interference that may cause undesired operation.

This equipment has been tested and found to comply with the limits of a Class B digital device, pursuant to Part 15 of the FCC Rules. These limits are designed to provide reasonable protection against harmful interference when the equipment is operated in a residential environment. This equipment generates, uses, and radiates radio frequency energy, and if not installed and used in accordance with the instructions, may cause harmful interference. However, there is no guarantee that interference will not occur. If this

equipment does cause interference to radio or television reception, which can be determined by turning the equipment off and on, the user is encouraged to correct the interference by one of the following measures:

- Reorient or relocate the receiving antenna.
- Increase separation between the equipment and receiver.
- Connect the equipment to an outlet on a circuit different from which the receiver is connected.
- Consult the dealer or an experienced radio/TV technician.

The Part 15 radio device operates on a non-interference basis with other devices operating at this frequency when using the integrated antennas. Any changes or modification to the product not expressly approved by Samsung could void the user's authority to operate this device.

Samsung Products and Recycling

Samsung cares for the environment and encourages its customers to recycle Samsung devices and genuine Samsung accessories.

Proper disposal of your device is not only important for safety, it benefits the environment.

For more information about recycling your HomeSync, go to: <http://mobile.samsungusa.com/recycling/index.jsp> or call 1-800-822-8837 for more information.

To find the nearest recycling location, go to: www.samsung.com/recyclingdirect or call 1-877-278-0799.

Care and Maintenance

Your device is a product of superior design and craftsmanship and should be treated with care. Follow all warnings and instructions marked on the product. The suggestions below will help you fulfill any warranty obligations and allow you to enjoy this product for many years:

Keep your Samsung device away from:

Liquids of any kind

Keep the device dry. Precipitation, humidity, and liquids contain minerals that will corrode electronic circuits.

If the device does get wet, do not accelerate drying with the use of an oven, microwave, or dryer, because this may damage the device and could cause a fire or explosion. Do not use the device with a wet hand. Doing so may cause an electric shock to you or damage to the device.

Extreme heat or cold

Avoid temperatures below 0°C / 32°F or above 45°C / 113°F.

Microwaves

Do not try to dry your device in a microwave oven. Doing so may cause a fire or explosion.

Dust and Dirt

Do not expose your device to dust, dirt, or sand.

Cleaning solutions

Unplug the product from the wall outlet before cleaning. Do not use liquid cleaners, aerosol cleaners, harsh chemicals, cleaning solvents, or strong detergents to clean the device. Use an anti-static cleaning pad.

Shock or vibration

Do not drop, knock, or shake the device. Rough handling can break internal circuit boards. Do not place this product on an unstable cart, stand, or table. If the product falls, it could be damaged.

Paint

Do not paint the device. Paint can clog the device's moving parts or ventilation openings and prevent proper operation.

Power

- This product should be operated using the type of power indicated on the marking label. If you are not sure of the type of power available, consult your dealer or local power company.
- Do not allow anything to rest on the power cord. Do not locate this product where people will walk on the cord.

- Never push objects of any kind into this product through cabinet slots as they may touch dangerous voltage points or short-out parts that could result in a fire or electric shock.
- Do not attempt to service this product yourself, as opening or removing covers may expose you to dangerous voltage points or other risks.
- Refer all questions regarding servicing of this product to qualified service personnel.

Operating Environment

Remember to follow any special regulations in force in any area, and always switch your device off whenever it is forbidden to use it, or when it may cause interference or danger. When connecting the device or any accessory to another device, read its user's guide for detailed safety instructions. Do not connect incompatible products.

Using Your Device Near Other Electronic Devices

Most modern electronic equipment is shielded from Radio Frequency (RF) signals. However, certain electronic equipment may not be shielded against the RF signals from your device. Consult the manufacturer to discuss alternatives.

When your Device is Wet

Do not turn on your device if it is wet. If your device is already on, turn it off. If the device will not turn off, leave it as-is. Then, dry the device with a towel and take it to a service center.

Danger—Electric Shock and Fire

Electric current from power, telephone, and communication cables is hazardous, and could result in electric shock and/or fire.

To avoid electric shock, use caution when connecting cables. For example, do not connect safety extra-low voltage (SELV) circuits to telephone-network voltage (TNV) circuits. LAN ports contain SELV circuits, and WAN ports contain TNV circuits. Some LAN and WAN ports both use RJ-45 connectors.

To avoid electric shock, do not operate the product or connect or disconnect cables during electrical storms.

To avoid electric shock, do not use this product in or near water.

To reduce the risk of fire or overheating, keep this product in well ventilated areas, away from radiators or other heat sources. Do not block cooling vents.

The plug-socket combination must be accessible at all times because it serves as the main power-disconnecting device.

Use only the manufacturer-provided AC adaptor approved for use with this product. Use of another AC adaptor may cause a fire or explosion.

This product relies on short-circuit (overcurrent) protection installed in your home or office. Ensure that a fuse or circuit breaker no larger than 120 VAC, 15A U.S. is used on the phase conductors (all current carrying conductors).

Unplug this product from the wall outlet and refer servicing to qualified service personnel under the following conditions:

- a. When the power cord or plug is damaged or frayed.
- b. If liquid has been spilled into the product.
- c. If the product has been exposed to rain or water.
- d. If the product does not operate normally when the operating instructions are followed. Adjust only those controls that are covered by the operating instructions, since improper adjustment of other controls may result in damage and will often require extensive work by a qualified technician to restore the product to normal condition.

Restricting Children's Access to Your Device

Your device is not a toy. Do not allow children to play with it because they could hurt themselves and others, damage the device, or use services that increase your device bill.

Keep the device and all its parts and accessories out of the reach of small children.

FCC Notice and Cautions

FCC Notice

The device may cause TV or radio interference if used in close proximity to receiving equipment. The FCC can require you to stop using the device if such interference cannot be eliminated.

Cautions

Any changes or modifications to your device not expressly approved in this document could void your warranty for this equipment and void your authority to operate this equipment.

The use of any unauthorized accessories may be dangerous and void the device warranty if said accessories cause damage or a defect to the device. Although your device is quite sturdy, it is a complex piece of equipment and can be broken. Avoid dropping, hitting, bending, or sitting on it.

Other Important Safety Information

- Only qualified personnel should service the device. Faulty service may be dangerous and may invalidate any warranty applicable to the device.
- Seizures or blackouts can occur when you are exposed to flashing lights while watching videos or playing games for extended periods. If you feel any discomfort, stop using the device immediately.

Section 9: Warranty Information

Standard Limited Warranty

What is covered and for how long?

SAMSUNG TELECOMMUNICATIONS AMERICA, LLC (“SAMSUNG”) warrants that SAMSUNG’s devices and accessories (“Products”) are free from defects in material and workmanship under normal use and service for the period commencing upon the date of purchase by the first consumer purchaser and continuing for the following specified period of time after that date:

HomeSync Device	1 Year
Other Device Accessories	1 Year

What is not covered?

This Limited Warranty is conditioned upon proper use of the Product.

This Limited Warranty does not cover: (a) defects or damage resulting from accident, misuse, abnormal use, abnormal conditions, improper storage, exposure to liquid, moisture, dampness, sand or dirt, neglect, or unusual physical, electrical or electromechanical stress; (b) scratches, dents

and cosmetic damage, unless caused by SAMSUNG; (c) defects or damage resulting from excessive force or use of a metallic object when pressing on a touch screen; (d) equipment that has the serial number or the enhancement data code removed, defaced, damaged, altered or made illegible; (e) ordinary wear and tear; (f) defects or damage resulting from the use of Product in conjunction or connection with accessories, products, or ancillary/peripheral equipment not furnished or approved by SAMSUNG; (g) defects or damage resulting from improper testing, operation, maintenance, installation, service, or adjustment not furnished or approved by SAMSUNG; (h) defects or damage resulting from external causes such as collision with an object, fire, flooding, dirt, windstorm, lightning, earthquake, exposure to weather conditions, theft, blown fuse, or improper use of any electrical source; (i) defects or damage resulting from cellular signal reception or transmission, or viruses or other software problems introduced into the Product; or (j) Product used or purchased outside the United States.

What are SAMSUNG's obligations?

During the applicable warranty period, provided the Product is returned in accordance with the terms of this Limited Warranty, SAMSUNG will repair or replace the Product, at SAMSUNG's sole option, without charge. SAMSUNG may, at SAMSUNG's sole option, use rebuilt, reconditioned, or new parts or components when repairing any Product, or may replace the Product with a rebuilt, reconditioned or new Product.

Repaired/replaced cases will be warranted for a period of ninety (90) days. All other repaired/replaced Products will be warranted for a period equal to the remainder of the original Limited Warranty on the original Product or for ninety (90) days, whichever is longer. All replaced Products, parts, components, boards and equipment shall become the property of SAMSUNG. Except to any extent expressly allowed by applicable law, transfer or assignment of this Limited Warranty is prohibited.

What must you do to obtain warranty service?

To obtain service under this Limited Warranty, you must return the Product to an authorized HomeSync service facility in an adequate container for shipping, accompanied by the

sales receipt or comparable proof of sale showing the original date of purchase, the serial number of the Product and the seller's name and address.

To obtain assistance on where to deliver the Product, please call SAMSUNG Customer Care at 1-888-987-4357. If SAMSUNG determines that any Product is not covered by this Limited Warranty, you must pay all parts, shipping, and labor charges for the repair or return of such Product.

You should keep a separate backup copy of any contents of the Product before delivering the Product to SAMSUNG for warranty service, as some or all of the contents may be deleted or reformatted during the course of warranty service.

What are the limits on SAMSUNG's liability?

THIS LIMITED WARRANTY SETS OUT THE FULL EXTENT OF SAMSUNG'S RESPONSIBILITIES, AND THE EXCLUSIVE REMEDY REGARDING THE PRODUCTS.

ALL IMPLIED WARRANTIES, INCLUDING WITHOUT LIMITATION, IMPLIED WARRANTIES OF MERCHANTABILITY AND FITNESS FOR A PARTICULAR PURPOSE, ARE LIMITED TO THE DURATION OF THIS LIMITED WARRANTY. IN NO EVENT SHALL SAMSUNG BE LIABLE FOR DAMAGES IN EXCESS OF THE PURCHASE PRICE OF THE PRODUCT OR FOR, WITHOUT LIMITATION, COMMERCIAL LOSS OF ANY SORT; LOSS OF

USE, TIME, DATA, REPUTATION, OPPORTUNITY, GOODWILL, PROFITS OR SAVINGS; INCONVENIENCE; INCIDENTAL, SPECIAL, CONSEQUENTIAL OR PUNITIVE DAMAGES; OR DAMAGES ARISING FROM THE USE OR INABILITY TO USE THE PRODUCT. SOME STATES AND JURISDICTIONS DO NOT ALLOW LIMITATIONS ON HOW LONG AN IMPLIED WARRANTY LASTS, OR THE DISCLAIMER OR LIMITATION OF INCIDENTAL OR CONSEQUENTIAL DAMAGES, SO THE ABOVE LIMITATIONS AND DISCLAIMERS MAY NOT APPLY TO YOU.

SAMSUNG MAKES NO WARRANTIES OR REPRESENTATIONS, EXPRESS OR IMPLIED, STATUTORY OR OTHERWISE, AS TO THE QUALITY, CAPABILITIES, OPERATIONS, PERFORMANCE OR SUITABILITY OF ANY THIRD-PARTY SOFTWARE OR EQUIPMENT USED IN CONJUNCTION WITH THE PRODUCT, OR THE ABILITY TO INTEGRATE ANY SUCH SOFTWARE OR EQUIPMENT WITH THE PRODUCT, WHETHER SUCH THIRD-PARTY SOFTWARE OR EQUIPMENT IS INCLUDED WITH THE PRODUCT DISTRIBUTED BY SAMSUNG OR OTHERWISE. RESPONSIBILITY FOR THE QUALITY, CAPABILITIES, OPERATIONS, PERFORMANCE AND SUITABILITY OF ANY SUCH THIRD-PARTY SOFTWARE OR EQUIPMENT RESTS SOLELY WITH THE USER AND THE DIRECT VENDOR, OWNER OR SUPPLIER OF SUCH THIRD-PARTY SOFTWARE OR EQUIPMENT.

Nothing in the Product instructions or information shall be construed to create an express warranty of any kind with respect to the Products. No agent, employee, dealer, representative or reseller is authorized to modify or extend this Limited Warranty or to make binding representations or claims, whether in advertising, presentations or otherwise, on behalf of SAMSUNG regarding the Products or this Limited Warranty.

This Limited Warranty gives you specific legal rights, and you may also have other rights that vary from state to state.

What is the procedure for resolving disputes?

ALL DISPUTES WITH SAMSUNG ARISING IN ANY WAY FROM THIS LIMITED WARRANTY OR THE SALE, CONDITION OR PERFORMANCE OF THE PRODUCTS SHALL BE RESOLVED EXCLUSIVELY THROUGH FINAL AND BINDING ARBITRATION, AND NOT BY A COURT OR JURY.

Any such dispute shall not be combined or consolidated with a dispute involving any other person's or entity's Product or claim, and specifically, without limitation of the foregoing, shall not under any circumstances proceed as part of a class action. The arbitration shall be conducted before a single arbitrator, whose award may not exceed, in form or amount, the relief allowed by the applicable law. The arbitration shall

be conducted according to the American Arbitration Association (AAA) Commercial Arbitration Rules applicable to consumer disputes. This arbitration provision is entered pursuant to the Federal Arbitration Act. The laws of the State of Texas, without reference to its choice of laws principles, shall govern the interpretation of the Limited Warranty and all disputes that are subject to this arbitration provision. The arbitrator shall decide all issues of interpretation and application of this arbitration provision and the Limited Warranty.

For any arbitration in which your total damage claims, exclusive of attorney fees and expert witness fees, are \$5,000.00 or less (“Small Claim”), the arbitrator may, if you prevail, award your reasonable attorney fees, expert witness fees and costs as part of any award, but may not grant SAMSUNG its attorney fees, expert witness fees or costs unless it is determined that the claim was brought in bad faith. In a Small Claim case, you shall be required to pay no more than half of the total administrative, facility and arbitrator fees, or \$50.00 of such fees, whichever is less, and SAMSUNG shall pay the remainder of such fees.

Administrative, facility and arbitrator fees for arbitrations in which your total damage claims, exclusive of attorney fees and expert witness fees, exceed \$5,000.00 (“Large Claim”)

shall be determined according to AAA rules. In a Large Claim case, the arbitrator may grant to the prevailing party, or apportion among the parties, reasonable attorney fees, expert witness fees and costs. Judgment may be entered on the arbitrator’s award in any court of competent jurisdiction.

This arbitration provision also applies to claims against SAMSUNG’s employees, representatives and affiliates if any such claim arises from the Product’s sale, condition or performance.

You may opt out of this dispute resolution procedure by providing notice to SAMSUNG no later than 30 calendar days from the date of the first consumer purchaser’s purchase of the Product. To opt out, you must send notice by e-mail to optout@sta.samsung.com, with the subject line: “Arbitration Opt Out.” You must include in the opt out e-mail (a) your name and address; (b) the date on which the Product was purchased; (c) the Product model name or model number; and (d) the IMEI or MEID or Serial Number, as applicable, if you have it (the IMEI or MEID or Serial Number can be found (i) on the Product box; (ii) on the Product information screen, which can be found under “Settings;” (iii) on a label on the back of the Product beneath the battery, if the battery is removable; and (iv) on the outside of the Product if the battery is not removable). Alternatively, you may opt out by calling 1-888-987-4357 no

later than 30 calendar days from the date of the first consumer purchaser's purchase of the Product and providing the same information. These are the only two forms of notice that will be effective to opt out of this dispute resolution procedure. Opting out of this dispute resolution procedure will not affect the coverage of the Limited Warranty in any way, and you will continue to enjoy the benefits of the Limited Warranty.

Severability

If any portion of this Limited Warranty is held to be illegal or unenforceable, such partial illegality or unenforceability shall not affect the enforceability of the remainder of the Limited Warranty.

Precautions for Transfer and Disposal

If data stored on this device is deleted or reformatted using the standard methods, the data only appears to be removed on a superficial level, and it may be possible for someone to retrieve and reuse the data by means of special software.

To avoid unintended information leaks and other problems of this sort, it is recommended that the device be returned to Samsung's Customer Care Center for an Extended File System (EFS) Clear which will eliminate all user memory and return all settings to default settings. Please contact the **Samsung Customer Care Center** for details.

Important! Please provide warranty information (proof of purchase) to Samsung's Customer Care Center in order to provide this service at no charge. If the warranty has expired on the device, charges may apply.

Samsung Telecommunications America, LLC

1301 E. Lookout Drive
Richardson, Texas 75082

Phone: 1-800-SAMSUNG

Phone: 1-888-987-HELP (4357)

©2013 Samsung Telecommunications America, LLC. All rights reserved.

No reproduction in whole or in part allowed without prior written approval. Specifications and availability subject to change without notice. [111611]

End User License Agreement for Software

IMPORTANT. READ CAREFULLY: This End User License Agreement (“EULA”) is a legal agreement between you (either an individual or a single entity) and Samsung Electronics Co., Ltd. (“Samsung”) for software, owned by Samsung and its affiliated companies and its third party suppliers and licensors, that accompanies this EULA, which includes computer software and may include associated media, printed materials, “online” or electronic documentation in connection with your use of this device (“Software”).

This device requires the use of preloaded software in its normal operation. BY USING THE DEVICE OR ITS PRELOADED SOFTWARE, YOU ACCEPT THE TERMS OF THIS EULA. IF YOU DO NOT ACCEPT THESE TERMS, DO NOT USE THE DEVICE OR THE SOFTWARE.

1. **GRANT OF LICENSE.** Samsung grants you the following rights provided that you comply with all terms and conditions of this EULA: You may install, use, access, display and run one copy of the Software on the local hard disk(s) or other permanent storage media of one computer and use the Software on a single computer or a mobile device at a time,

and you may not make the Software available over a network where it could be used by multiple computers at the same time. You may make one copy of the Software in machine readable form for backup purposes only; provided that the backup copy must include all copyright or other proprietary notices contained on the original.

Certain items of the Software may be subject to open source licenses. The open source license provisions may override some of the terms of this EULA. We make the applicable open source licenses available to you on the Legal Notices section of the Settings menu of your device.

2. **RESERVATION OF RIGHTS AND OWNERSHIP.** Samsung reserves all rights not expressly granted to you in this EULA. The Software is protected by copyright and other intellectual property laws and treaties. Samsung or its suppliers own the title, copyright and other intellectual property rights in the Software. The Software is licensed, not sold.

3. **LIMITATIONS ON END USER RIGHTS.** You may not reverse engineer, decompile, disassemble, or otherwise attempt to discover the source code or algorithms of, the Software (except and only to the extent that such activity is expressly permitted by applicable law notwithstanding this limitation), or modify, or disable any features of, the Software, or create

derivative works based on the Software. You may not rent, lease, lend, sublicense or provide commercial hosting services with the Software.

4. CONSENT TO USE OF DATA. You agree that Samsung and its affiliates may collect and use technical information gathered as part of the product support services related to the Software provided to you, if any, such as IMEI (your device's unique identification number), device number, model name, customer code, access recording, your device's current SW version, MCC (Mobile Country Code), MNC (Mobile Network Code). Samsung and its affiliates may use this information solely to improve their products or to provide customized services or technologies to you and will not disclose this information in a form that personally identifies you. At all times your information will be treated in accordance with Samsung's Privacy Policy, which can be viewed at: <http://account.samsung.com/membership/pp>.

5. SOFTWARE UPDATES. Samsung may provide to you or make available to you updates, upgrades, supplements and add-on components (if any) of the Software, including bug fixes, service upgrades (parts or whole), products or devices, and updates and enhancements to any software previously installed (including entirely new versions), (collectively "Update") after the date you obtain your initial copy of the

Software to improve the Software and ultimately enhance your user experience with your device. This EULA applies to all and any component of the Update that Samsung may provide to you or make available to you after the date you obtain your initial copy of the Software, unless we provide other terms along with such Update. To use Software provided through Update, you must first be licensed for the Software identified by Samsung as eligible for the Update. After the Update, you may no longer use the Software that formed the basis for your Update eligibility. The updated Software version may add new functions and, in some limited cases, may delete existing functions.

While the Update will be generally available, in some limited circumstances, the Software updates will only be offered by your network carrier, and such Software updates will be governed by your contractual relationship with your network carrier.

With the "Automatic Update" function enabled (as in the default setting in the System Update menu in the Setting), your device downloads some Updates automatically from time to time. Your device will, however, ask for your consent before installing any Update. If you choose to disable the "Automatic Update" function, then you can check the availability of new Updates by clicking on the "Check

Update” menu in the Setting. We recommend that you check availability of any new Updates periodically for optimal use of your device. If you want to avoid any use of network data for the Update downloads, then you should choose the “Wi-Fi Only” option in the Setting. (Regardless of the option you choose, the “Automatic Update” function downloads Updates only through Wi-Fi connection.)

6. Some features of the Software may require your device to have access to the internet and may be subject to restrictions imposed by your network or internet provider. Unless your device is connected to the internet through Wi-Fi connection, the Software will access through your mobile network, which may result in additional charges depending on your payment plan. In addition, your enjoyment of some features of the Software may be affected by the suitability and performance of your device hardware or data access.

7. **SOFTWARE TRANSFER.** You may not transfer this EULA or the rights to the Software granted herein to any third party unless it is in connection with the sale of the mobile device which the Software accompanied. In such event, the transfer must include all of the Software (including all component parts, the media and printed materials, any upgrades, this EULA) and you may not retain any copies of the Software.

The transfer may not be an indirect transfer, such as a consignment. Prior to the transfer, the end user receiving the Software must agree to all the EULA terms.

8. **EXPORT RESTRICTIONS.** You acknowledge that the Software is subject to export restrictions of various countries. You agree to comply with all applicable international and national laws that apply to the Software, including all the applicable export restriction laws and regulations.

9. **TERMINATION.** This EULA is effective until terminated. Your rights under this License will terminate automatically without notice from Samsung if you fail to comply with any of the terms and conditions of this EULA. Upon termination of this EULA, you must cease all use of the Software and destroy all copies, full or partial, of the Software.

10. **DISCLAIMER OF WARRANTY.** UNLESS SEPARATELY STATED IN A WRITTEN EXPRESS LIMITED WARRANTY ACCOMPANYING YOUR DEVICE, ALL SOFTWARE PROVIDED BY SAMSUNG WITH THIS MOBILE DEVICE (WHETHER INCLUDED WITH THE DEVICE, DOWNLOADED, OR OTHERWISE OBTAINED) IS PROVIDED “AS IS” AND ON AN “AS AVAILABLE” BASIS, WITHOUT WARRANTIES OF ANY KIND FROM SAMSUNG, EITHER EXPRESS OR IMPLIED. TO THE FULLEST EXTENT POSSIBLE PURSUANT TO APPLICABLE

LAW, SAMSUNG DISCLAIMS ALL WARRANTIES EXPRESS, IMPLIED, OR STATUTORY, INCLUDING, BUT NOT LIMITED TO, IMPLIED WARRANTIES OF MERCHANTABILITY, SATISFACTORY QUALITY OR WORKMANLIKE EFFORT, FITNESS FOR A PARTICULAR PURPOSE, RELIABILITY OR AVAILABILITY, ACCURACY, LACK OF VIRUSES, QUIET ENJOYMENT, NON INFRINGEMENT OF THIRD PARTY RIGHTS OR OTHER VIOLATION OF RIGHTS. SOME JURISDICTIONS DO NOT ALLOW EXCLUSIONS OR LIMITATIONS OF IMPLIED WARRANTIES, SO THE ABOVE EXCLUSIONS OR LIMITATIONS MAY NOT APPLY TO YOU. NO ADVICE OR INFORMATION, WHETHER ORAL OR WRITTEN, OBTAINED BY YOU FROM SAMSUNG OR ITS AFFILIATES SHALL BE DEEMED TO ALTER THIS DISCLAIMER BY SAMSUNG OF WARRANTY REGARDING THE SOFTWARE, OR TO CREATE ANY WARRANTY OF ANY SORT FROM SAMSUNG.

11. THIRD-PARTY APPLICATIONS. Certain third party applications may be included with, or downloaded to this mobile device. Samsung makes no representations whatsoever about any of these applications. Since Samsung has no control over such applications, you acknowledge and agree that Samsung is not responsible for the availability of such applications and is not responsible or liable for any content, advertising, products, services, or other materials

on or available from such applications. You expressly acknowledge and agree that use of third party applications is at your sole risk and that the entire risk of unsatisfactory quality, performance, accuracy and effort is with you. It is up to you to take precautions to ensure that whatever you select to use is free of such items as viruses, worms, Trojan horses, and other items of a destructive nature. References on this mobile device to any names, marks, products, or services of any third-parties are provided solely as a convenience to you, and do not constitute or imply an endorsement, sponsorship, or recommendation of, or affiliation with the third party or its products and services. You agree that Samsung shall not be responsible or liable, directly or indirectly, for any damage or loss, including but not limited to any damage to the mobile device or loss of data, caused or alleged to be caused by, or in connection with, use of or reliance on any such third party content, products, or services available on or through any such application. You acknowledge and agree that the use of any third-party application is governed by such third party application provider's Terms of Use, License Agreement, Privacy Policy, or other such agreement and that any information or personal data you provide, whether knowingly or unknowingly, to such third-party application provider, will be subject to such third party application provider's privacy

policy, if such a policy exists. SAMSUNG DISCLAIMS ANY RESPONSIBILITY FOR ANY DISCLOSURE OF INFORMATION OR ANY OTHER PRACTICES OF ANY THIRD PARTY APPLICATION PROVIDER. SAMSUNG EXPRESSLY DISCLAIMS ANY WARRANTY REGARDING WHETHER YOUR PERSONAL INFORMATION IS CAPTURED BY ANY THIRD PARTY APPLICATION PROVIDER OR THE USE TO WHICH SUCH PERSONAL INFORMATION MAY BE PUT BY SUCH THIRD PARTY APPLICATION PROVIDER.

12. SAMSUNG APPLICATIONS. Certain Samsung applications and services may be included with, or downloaded to, this mobile device. Many of them require Samsung Services membership registration (“Samsung Account”), and your rights and obligations will be set forth in separate Samsung Account terms and conditions and privacy policies. There are non-Samsung Account applications and services that require your consent to their separate terms and conditions and privacy policies. You expressly acknowledge and agree that your use of such applications and services will be subject to the applicable terms and conditions and privacy policies.

13. LIMITATION OF LIABILITY. SAMSUNG WILL NOT BE LIABLE FOR ANY DAMAGES OF ANY KIND ARISING OUT OF OR RELATING TO THE USE OR THE INABILITY TO USE THE SOFTWARE OR ANY THIRD PARTY APPLICATION, ITS

CONTENT OR FUNCTIONALITY, INCLUDING BUT NOT LIMITED TO DAMAGES CAUSED BY OR RELATED TO ERRORS, OMISSIONS, INTERRUPTIONS, DEFECTS, DELAY IN OPERATION OR TRANSMISSION, COMPUTER VIRUS, FAILURE TO CONNECT, NETWORK CHARGES, IN-APP PURCHASES, AND ALL OTHER DIRECT, INDIRECT, SPECIAL, INCIDENTAL, EXEMPLARY, OR CONSEQUENTIAL DAMAGES EVEN IF SAMSUNG HAS BEEN ADVISED OF THE POSSIBILITY OF SUCH DAMAGES. SOME JURISDICTIONS DO NOT ALLOW THE EXCLUSION OR LIMITATION OF INCIDENTAL OR CONSEQUENTIAL DAMAGES, SO THE ABOVE EXCLUSIONS OR LIMITATIONS MAY NOT APPLY TO YOU. NOTWITHSTANDING THE FOREGOING, SAMSUNG ELECTRONIC CO.’S TOTAL LIABILITY TO YOU FOR ALL LOSSES, DAMAGES, CAUSES OF ACTION, INCLUDING BUT NOT LIMITED TO THOSE BASED ON CONTRACT, TORT, OR OTHERWISE, ARISING OUT OF YOUR USE OF THE SOFTWARE OR THIRD PARTY APPLICATIONS ON THIS MOBILE DEVICE, OR ANY OTHER PROVISION OF THIS EULA, SHALL NOT EXCEED THE AMOUNT PURCHASER PAID SPECIFICALLY FOR THIS MOBILE DEVICE OR ANY SUCH THIRD PARTY APPLICATION THAT WAS INCLUDED WITH THIS MOBILE DEVICE. THE FOREGOING LIMITATIONS, EXCLUSIONS, AND DISCLAIMERS (INCLUDING SECTIONS 10,

11, 12 AND 13) SHALL APPLY TO THE MAXIMUM EXTENT PERMITTED BY APPLICABLE LAW, EVEN IF ANY REMEDY FAILS ITS ESSENTIAL PURPOSE.

14. U.S. GOVERNMENT END USERS RESTRICTED RIGHTS. The Software is licensed only with “restricted rights” and as “commercial items” consisting of “commercial software” and “commercial software documentation” with only those rights as are granted to all other end users pursuant to the terms and conditions herein. All Products are provided only with “restricted rights” with only those rights as are granted to all other end users pursuant to the terms and conditions herein. All Software and Products are provided subject to Federal Acquisition Regulation (FAR) 52.227.19.

15. APPLICABLE LAW. This EULA is governed by the laws of the jurisdiction where you are a resident or, if a resident of the United States, by the laws of the state of Texas, without regard to its conflict of law provisions. This EULA shall not be governed by the UN Convention on Contracts for the International Sale of Goods, the application of which is expressly excluded.

16. DISPUTE RESOLUTION.

(a) Non-United States residents. If a dispute, controversy or difference arising in any way from this EULA or your use of the Software is not amicably settled, it shall be subject to the non-exclusive jurisdiction of the courts of the jurisdiction where you are a resident. Notwithstanding the foregoing, Samsung may apply for injunctive remedies (or an equivalent type of urgent legal relief) in any jurisdiction.

(b) United States residents. ALL DISPUTES WITH SAMSUNG ARISING IN ANY WAY FROM THIS EULA OR YOUR USE OF THE SOFTWARE SHALL BE RESOLVED EXCLUSIVELY THROUGH FINAL AND BINDING ARBITRATION, AND NOT BY A COURT OR JURY. Any such dispute shall not be combined or consolidated with any other person’s or entity’s claim or dispute, and specifically, without limitation of the foregoing, shall not under any circumstances proceed as part of a class action. The arbitration shall be conducted before a single arbitrator, whose award may not exceed, in form or amount, the relief allowed by the applicable law. The arbitration shall be conducted according to the American Arbitration Association (AAA) Commercial Arbitration Rules applicable to consumer disputes. This arbitration provision is entered pursuant to the Federal Arbitration Act. The laws of the State of Texas, without reference to its choice of laws principles,

shall govern the interpretation of the EULA and all disputes that are subject to this arbitration provision. The arbitrator shall decide all issues of interpretation and application of this arbitration provision and the EULA. For any arbitration in which your total damage claims, exclusive of attorney fees and expert witness fees, are \$5,000.00 or less (“Small Claim”), the arbitrator may, if you prevail, award your reasonable attorney fees, expert witness fees and costs as part of any award, but may not grant Samsung its attorney fees, expert witness fees or costs unless it is determined that the claim was brought in bad faith. In a Small Claim case, you shall be required to pay no more than half of the total administrative, facility and arbitrator fees, or \$50.00 of such fees, whichever is less, and Samsung shall pay the remainder of such fees. Administrative, facility and arbitrator fees for arbitrations in which your total damage claims, exclusive of attorney fees and expert witness fees, exceed \$5,000.00 (“Large Claim”) shall be determined according to AAA rules. In a Large Claim case, the arbitrator may grant to the prevailing party, or apportion among the parties, reasonable attorney fees, expert witness fees and costs. Judgment may be entered on the arbitrator’s award in any court of competent jurisdiction. This arbitration provision also applies to claims against Samsung’s employees,

representatives and affiliates if any such claim arises from the licensing or use of the Software. You may opt out of this dispute resolution procedure by providing notice to Samsung no later than 30 calendar days from the date of the first consumer purchaser’s purchase of this device. To opt out, you must send notice by e-mail to optout@sta.samsung.com, with the subject line: “Arbitration Opt Out.” You must include in the opt out e-mail (a) your name and address; (b) the date on which the device was purchased; (c) the device model name or model number; and (d) the IMEI or MEID or Serial Number, as applicable, if you have it (the IMEI or MEID or Serial Number can be found (i) on the device box; (ii) on the device information screen, which can be found under “Settings;” (iii) on a label on the back of the device beneath the battery, if the battery is removable; and (iv) on the outside of the device if the battery is not removable). Alternatively, you may opt out by calling 1-888-987-4357 no later than 30 calendar days from the date of the first consumer purchaser’s purchase of the device and providing the same information. These are the only two forms of notice that will be effective to opt out of this dispute resolution procedure. Opting out of this dispute resolution

procedure will not affect your use of the device or its preloaded Software, and you will continue to enjoy the benefits of this license.

17. **ENTIRE AGREEMENT; SEVERABILITY.** This EULA is the entire agreement between you and Samsung relating to the Software and supersedes all prior or contemporaneous oral or written communications, proposals and representations with respect to the Software or any other subject matter covered by this EULA. If any provision of this EULA is held to be void, invalid, unenforceable or illegal, the other provisions shall continue in full force and effect.

A

- Accessibility Settings** 56
- Account**
 - adding 54
 - removing 55
- Accounts** 54
- Adding an Account** 54
- Application Manager** 49
- Apps Screen** 24
- Audio**
 - codec 17
 - connecting to 6, 15
 - HDMI devices 55
- Audio Output Settings** 55

B

- Back Up Data** 54
- Bluetooth**
 - connecting 10
 - settings 47
- Bookmarks** 31
- Browsing History** 32
- Buttons** 23

C

- Care and Maintenance** 60
- Closing an Application** 23
- Connecting to a PC** 28
- Control Pad** 20
- Controlling a Screen** 18

D

- Date and Time Settings** 55
- Device Layout and Function** 5
- Device Name** 11, 57
- Device Software** 57
- Display Settings** 48
- DivX®**
 - registration code 56
- DLNA (Digital Living Network Alliance)** 48
- Double-Tapping** 20
- Download images** 32
- Downloads** 46
- Dragging** 20

E

- Editing Images** 37
- Electric Shock and Fire** 62
- Entering Text** 22
- Ethernet** 47
- Exposure to Radio Frequency (RF) Signals** 58

F

- Factory Reset** 54
- FCC ID** 58
- FCC Notice and Cautions** 63
- Features of Your Device** 17
- Federal Communications Commission (FCC)** 59
- File Sharing** 48
- Firmware Over-The-Air (FOTA)** 57
- Font Size**
 - accessibility setting 56
 - display 48
- FOTA** 57
- Functions Button** 6

G

Gallery 36

Google

your account 14, 15

Google Search 46

H

HDMI

cable 7

Cable Port 6

High Definition Multimedia
Interface 7

troubleshooting 16

Health and Safety Information 58

**High Definition Multimedia Interface
(HDMI)** 7

Home Screen 22

I

Images Slideshow 37

Installation 7

Installing Applications 24

Internet 30

bookmarks 31

download images 32

history 32

opening links 32

K

Keyboard

connecting 22

default 52

Kickback 56

L

LAN Cable Port 6

Language and Input 52

Local Area Network 47

Location Services Settings 49

Lock Screen 49

M

McAfee Virus Scan 46

Media Hub 40

microUSB Port 6

Mirror Mouse 21

Monitor 7

Mouseover 55

Music Player 35

My content 22

My Files 46

N

Nearby Devices 48

Network

connecting to 7

notification 47

Wi-Fi 28, 47

NFC Feature 10

Notifications 26

Notifications Panel 26

O

Opening an Application 23

Operating Environment 61

**Other Important Safety
Information** 63

P

- Part 15** 59
- Pinching** 21
- Play Movies & TV** 44
- Play Music App** 34
- Play Music by Mood** 36
- Play Store** 41
- Playing Music** 35
- Playing Videos** 38
- Playing Videos from Gallery** 37
- Playlists**
 - creating 36
 - music by mood 36
- Pointer Speed** 19, 53
- Ports**
 - HDMI cable 6
 - LAN cable 6
 - microUSB 6
 - power adaptor 6
 - S/PDIF cable 6
 - USB 6

- Power Adaptor Port** 6
- Power Button** 5
- Predictive Text Mode** 53

R

- Radio Frequency Safety** 58
- Recommended Screen** 25
- Remote Mouse** 18
- Removing an Account** 55
- Reset Device** 54
- Resetting the Device** 8
- Restricting Children's Access to Your Device** 63

S

- S/PDIF Port** 6
- Samsung Account**
 - signing in 54
- Samsung Keyboard Settings** 53
- Samsung Products and Recycling** 60
- Screen**
 - Apps 24
 - controlling 18
 - Home 22

- Screen Mirroring** 33
- Screenshot** 6
- Search** 46
- Security**
 - device 52
 - Wi-Fi 29
- Settings** 47
- Slideshow** 37
- Smartphone**
 - connecting to 9
 - Screen Mirroring 21, 33
 - using as a mouse 18
- Sound Settings** 48
- Standard Limited Warranty** 64
- Storage**
 - memory 17
 - memory information 49

T

- Talkback** 56
- Tapping** 20
- Time Zone** 55
- Touch Pad** 19
- Transferring Files** 27
- Troubleshooting** 16
- Turn Device On or Off** 9

U

- Uninstalling Applications** 24
- Updating Device Software** 57
- USB Port** 6

V

- Video**
 - codec 17
 - playing 37
 - YouTube 39
- Video Player** 38

W

- Warranty Information** 64
- Watching Videos with YouTube** 39
- Webpage Sharing** 32

Wi-Fi

- adding networks 29
- connecting to a network 28
- turning on and off 28

Wi-Fi Settings

Y

- YouTube** 39