



Figures and illustrations in this User Manual are provided for reference only and may differ from actual product appearance. Product design and specifications may be changed without notice.

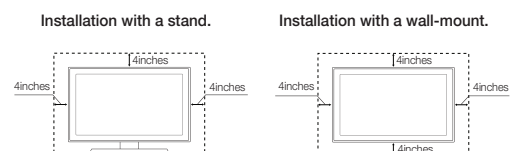
Still image warning

- Avoid displaying still images (such as jpeg picture files) or still image elements (such as TV channel logos, panorama or 4:3 image format, stock or news bars at screen bottom etc.) on the screen. Constant displaying of still pictures can cause ghosting of LED screen, which will affect image quality. To reduce risk of this effect, please follow below recommendations:
- Avoid displaying the same TV channel for long periods.
- Always try to display any image on full screen, use TV set picture format menu for best possible match.
- Reduce brightness and contrast values to minimum required to achieve desired picture quality, exceeded values may speed up the burnout process.
- Frequently use all TV features designed to reduce image retention and screen burnout, refer to proper user manual section for details.

Securing the Installation Space

Keep the required distances between the product and other objects (e.g. walls) to ensure proper ventilation. Failing to do so may result in fire or a problem with the product due to an increase in the internal temperature of the product.

- When using a stand or wall-mount, use parts provided by Samsung Electronics only.
- If you use parts provided by another manufacturer, it may result in a problem with the product or an injury due to the product falling.
- The appearance may differ depending on the product.
- Be careful when you contact the TV because some parts can be somewhat hot.



Contact SAMSUNG WORLDWIDE

If you have any questions or comments relating to Samsung products, please contact the SAMSUNG customer care center.

Country	Customer Care Center	Web Site
MEXICO	01-800-SAMSUNG (726-7864) Dirección: GENERAL MARIANO ESCOBEDO 476 PISO 8 COL. ANZURES, DELEGACIÓN MIGUEL HIDALGO MÉXICO, DISTRITO FEDERAL, C.P. 11590	www.samsung.com
ARGENTINE	0800 333 3733 URUGUAY 000 405 437 53 PARAGUAY 099 800 542 0003	www.samsung.com.ar www.samsung.com.uy
BRAZIL	0800-124-421 (Demais cidades e regiões) 4004-0000 (Capitais e grandes centros)	www.samsung.com.br
CHILE	800-SAMSUNG(726-7864)	www.samsung.cl
BOLIVIA	800-10-7260	www.samsung.com
COLOMBIA	01 8000 112 112 Bogotá 800 12 72	www.samsung.com.co
COSTA RICA	0-800-507-7267	www.samsung.com/latm (Spanish) www.samsung.com/latm (English)
DOMINICA	1-800-751-2676	www.samsung.com/latm (Spanish) www.samsung.com/latm (English)
ECUADOR	1-800-10-7267	www.samsung.com/latm (Spanish) www.samsung.com/latm (English)
EL SALVADOR	800-6225	www.samsung.com/latm (Spanish) www.samsung.com/latm (English)
GUATEMALA	1-800-209-0013	www.samsung.com/latm (Spanish) www.samsung.com/latm (English)
HONDURAS	800-27919267	www.samsung.com/latm (Spanish) www.samsung.com/latm (English)
JAMAICA	1-800-234-7267	www.samsung.com
NICARAGUA	001-800-5077267	www.samsung.com/latm (Spanish) www.samsung.com/latm (English)
PANAMA	800-7267	www.samsung.com/latm (Spanish) www.samsung.com/latm (English)
PERU	0-800-777-08	www.samsung.com.pe
PUESTO RICO	1-800-683-3180	www.samsung.com
TRINIDAD Y TOBAGO	1-800-SAMSUNG (726-7864)	www.samsung.com
VENEZUELA	0-800-100-5303	www.samsung.com/ve

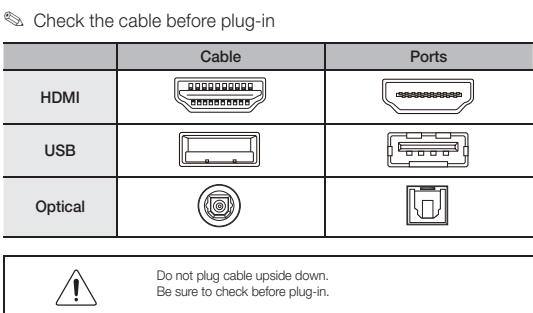
(Solo Mexico)
IMPORTADO POR: SAMSUNG ELECTRONICS MEXICO S.A. DE C.V.
GENERAL MARIANO ESCOBEDO 476 PISO 8 COL. ANZURES, DELEGACIÓN MIGUEL HIDALGO MÉXICO, DISTRITO FEDERAL, C.P. 11590
TEL.: 01 (5) 5747-5100 / 01 800 726 7864

Getting Started

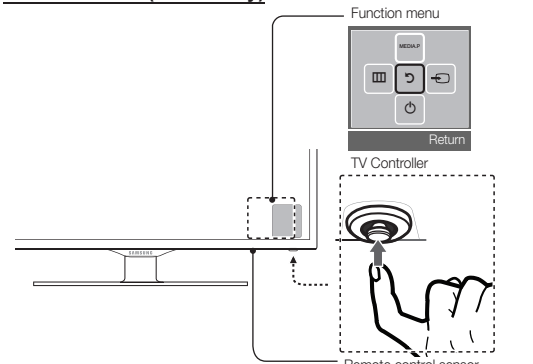
Accessories

- Remote Control & Batteries (AAA x 2)
- Warranty Card / Safety Guide
- Owner's Instructions
- Power Cord
- RS232
- Audio
- HDMI
- HDMI-DM
- Component
- Composite (AV)
- Coaxial (F)

Input Cables (Sold Separately)



TV Controller (Panel Key)



- Power on**: Turns the TV on by pressing the controller in standby mode.
- Adjusting the volume**: Adjusts the volume by moving the controller from side to side when the power is on.
- Selecting a channel**: Selects a channel by moving the controller up and down when the power is on.
- Using the function menu**: Press the controller when the power is on, then the function menu screen appears. If you press it again, the function menu screen disappears.
- Selecting the Media Play**: Selects the MEDIA.P by moving the controller in the function menu screen. The MEDIA.P main screen appears.
- Selecting the MENU**: Selects the MENU by moving the controller in the function menu screen. The OSD (On Screen Display) of your TV's feature appears.
- Selecting the Source List**: Selects the Source List by moving the controller in the function menu screen. The Source List screen appears.
- Power Off**: Turns the TV off by moving the controller in the function menu screen.

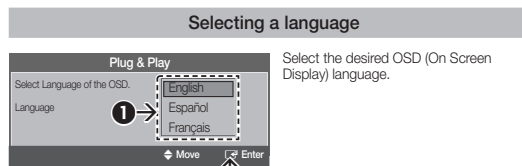
Exits the menu when pressing the controller more than 1 second.

When selecting the controller by moving the controller to the up/down/left/right directions, be sure not to press the controller. If you press it first, you cannot operate it to move the up/down/left/right directions.

Plug & Play (Initial Setup)

When you turn the TV on for the first time, a sequence of on-screen prompts will assist in configuring basic settings. Press the POWER button. Plug & Play is available only when the Input source is set to TV.

Connecting the power cord and antenna. (refer to 'Connections')

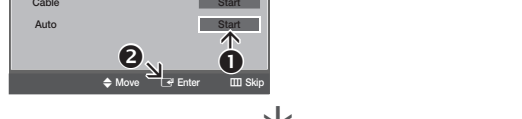


Selecting a Home Use mode

- Select the Home Use mode. Store Demo mode is for retail environments.
- When pressing TV controller, the function menu screen appears. Select the MENU and press it more than 5 seconds using the controller. The Store Demo mode is set. Cancel the Store Demo by selecting Source List and pressing it more than 5 seconds.

Selecting an antenna

- In Cable mode, you can select the correct signal source among STD, HRC, and IRC by pressing the up, down, left, or right button.



Setting the Clock Mode

- Set the Clock Mode automatically or manually.
- If you select the Auto, set the DST (Daylight Saving Time).
- On the DST screen, press ENTER, then select whether to turn DST (Daylight Saving Time) on or off. Select the time zone where you live.

Viewing the HD Connection Guide

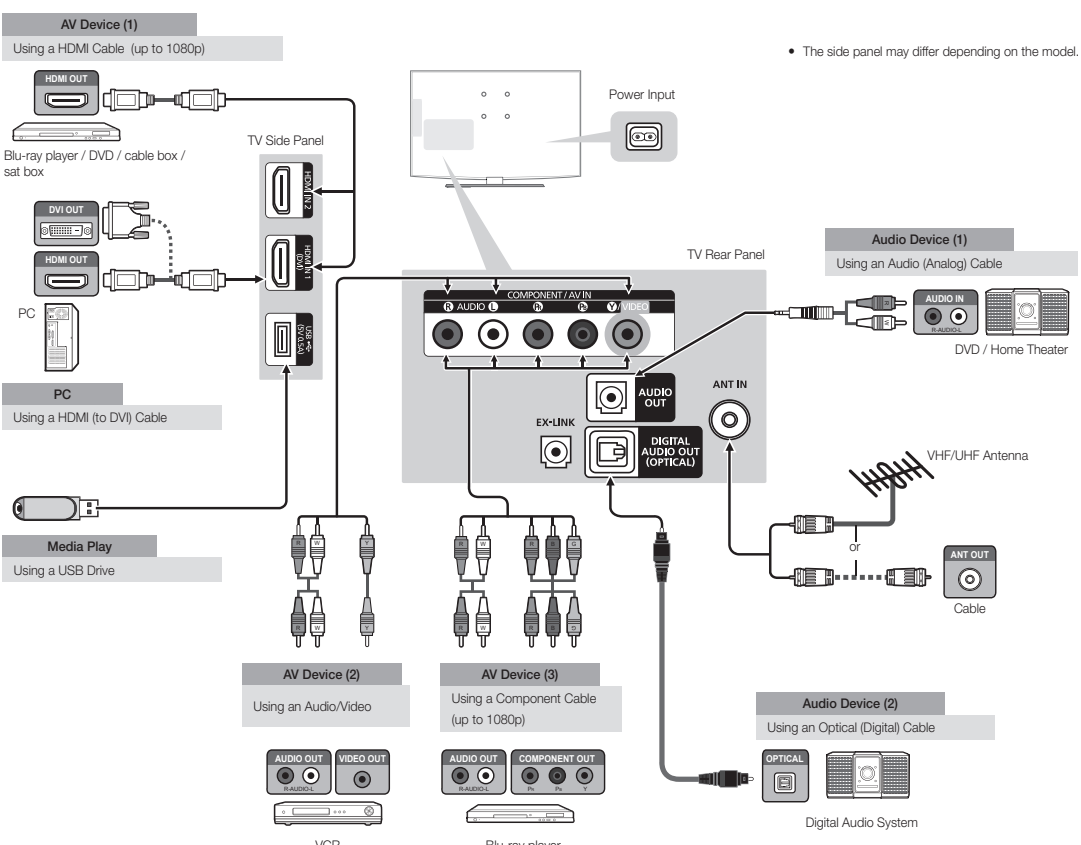
The connection method for the best HD screen quality is displayed.

Enjoy your TV.

Press the ENTER button.

Connections

- For better picture and audio quality, connect to a digital device using an HDMI cable.
- The picture may not display normally if at all or the audio may not work if an external device that uses an older version of HDMI mode is connected to the TV. If such a problem occurs, ask the manufacturer of the external device about the HDMI version and, if of date, request an upgrade.
- Be sure to purchase a certified HDMI cable. Otherwise, the picture may not display or a connector error may occur.
- PC/D-Sub and PC/DVI Audio IN input are not supported.
- For HDMI/DVI cable connection, you must use the HDMI IN 1 (DVI) jack.
- Connecting through the HDMI cable may not be supported depending on the PC.
- If an HDMI to DVI cable is connected to the HDMI IN 1 (DVI) port, the audio does not work.
- EX-LINK: Connector for service only.



Changing the Input Source

Source List

Use to select TV or an external input source such as a DVD player / Blu-ray player / cable box / STB satellite receiver.

- Press the SOURCE button.
 - Select a desired external input source.
- TV / AV / Component / HDMI1/DVI / HDMI2

You can only choose external devices that are connected to the TV. In the Source List, connected inputs will be highlighted.

How to use Edit Name

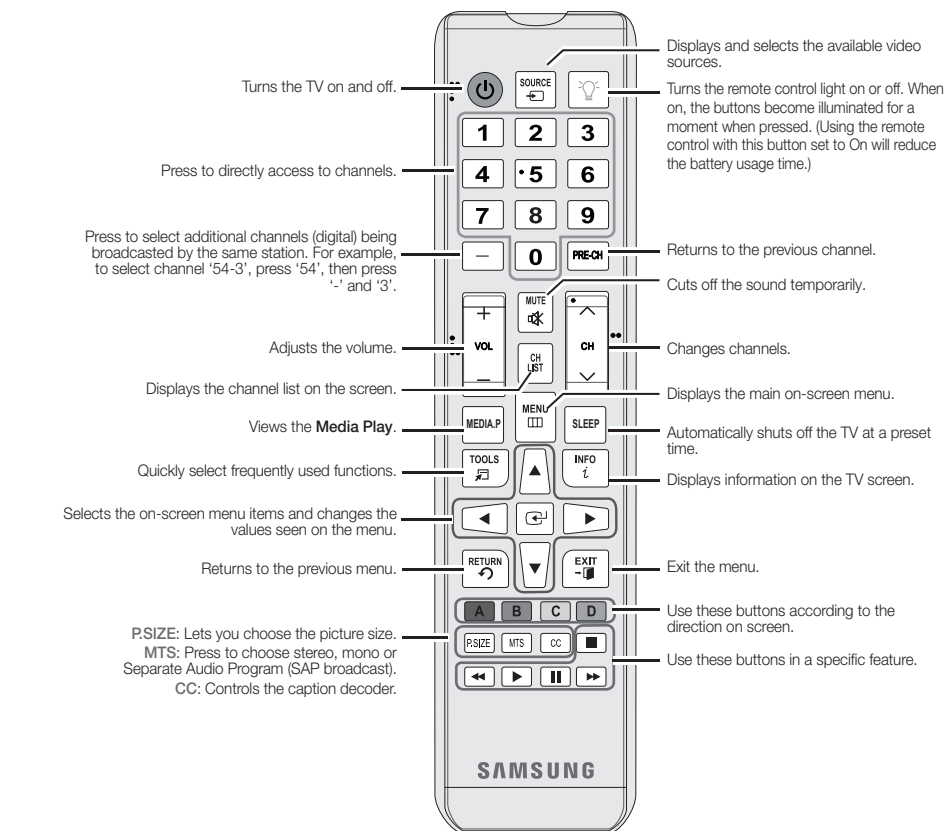
Edit Name lets you associate a device name to an input source. To access Edit Name, press the TOOLS button in Source List. The following selections appear under Edit Name:

- VCR / DVD / Cable STB / Satellite STB / PVR STB / AV Receiver / Game / Camcorder / PC / DVI PC / DVI TV / IPTV / Blu-ray / HD DVD / DMA: Name the device connected to the input jacks to make your input source selection easier.
- When connecting a PC to the HDMI IN (DVI) port with HDMI cable, you should set the TV to PC mode under Edit Name.
- When connecting a PC to the HDMI IN (DVI) port with HDMI to DVI cable, you should set the TV to DVI PC mode under Edit Name.
- When connecting an AV devices to the HDMI IN 1 (DVI) port with HDMI to DVI cable, you should set the TV to DVI mode under Edit Name.

You can see detailed information about the connected external device.

Remote Control

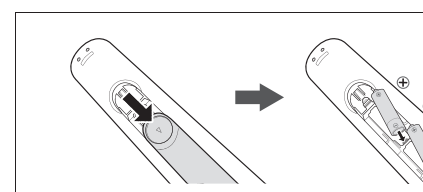
This remote control has Braille points on the Power, Channel, and Volume buttons and can be used by visually impaired persons.



Display Modes (HDMI/DVI Input)
Optimal resolution
4000 series: 1366 x 768@60Hz / 5000 series: 1920 x 1080@60Hz

Mode	Resolution	Horizontal Frequency	Vertical Frequency	Video Format	Pixel Clock (MHz)	Color	YCbCr	YCbCr 4:2:0	YCbCr 4:4:4	1080i	1080p
4000 series	640 x 480	31.469	75.000	525/525	25.175	RGB	✓	✓	✓	✓	✓
	720 x 480	31.469	75.000	525/525	25.175	RGB	✓	✓	✓	✓	✓
	640 x 480	30.000	66.667	525/525	25.200	RGB	✓	✓	✓	✓	✓
	852 x 480	48.726	74.251	525/525	37.200	RGB	✓	✓	✓	✓	✓
	1152 x 480	66.667	75.000	525/525	50.200	RGB	✓	✓	✓	✓	✓
	640 x 480	31.469	59.940	525/525	25.175	RGB	✓	✓	✓	✓	✓
	640 x 480	31.469	59.940	525/525	25.175	RGB	✓	✓	✓	✓	✓
	640 x 480	37.500	75.000	525/525	31.500	RGB	✓	✓	✓	✓	✓
	800 x 600	37.879	60.317	480/480	40.500	RGB	✓	✓	✓	✓	✓
	800 x 600	48.937	72.288	480/480	40.500	RGB	✓	✓	✓	✓	✓
5000 series	800 x 600	48.937	75.000	480/480	40.500	RGB	✓	✓	✓	✓	✓
	1024 x 768	48.363	60.504	525/525	55.000	RGB	✓	✓	✓	✓	✓
	1024 x 768	66.676	75.000	525/525	75.000	RGB	✓	✓	✓	✓	✓
	1024 x 768	66.033	75.000	720/720	75.750	RGB	✓	✓	✓	✓	✓
	1280 x 800	67.500	75.000	525/525	80.000	RGB	✓	✓	✓	✓	✓
	1280 x 800	87.750	75.000	525/525	105.000	RGB	✓	✓	✓	✓	✓
	1280 x 800	49.737	68.819	480/480	40.500	RGB	✓	✓	✓	✓	✓
	1280 x 1024	62.500	60.000	1080/1080	60.000	RGB	✓	✓	✓	✓	✓
	1280 x 1024	75.016	75.000	1080/1080	105.000	RGB	✓	✓	✓	✓	✓
	1366 x 768	47.712	59.750	480/480	40.500	RGB	✓	✓	✓	✓	✓
1440 x 900	56.250	60.000	1080/1080	105.000	RGB	✓	✓	✓	✓	✓	
1600 x 900H	60.000	60.000	1080/1080	105.000	RGB	✓	✓	✓	✓	✓	
1080 x 1080	60.000	60.000	1080/1080	105.000	RGB	✓	✓	✓	✓	✓	
1920 x 1080	67.500	60.000	1080/1080	105.000	RGB	✓	✓	✓	✓	✓	

Installing batteries (Battery size: AAA)



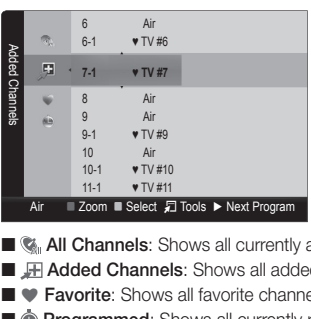
- NOTE
- Use the remote control within 23 feet from TV.
- Bright light may affect the performance of the remote control. Avoid use when nearby fluorescent lights or neon signs.
- The Color and shape may vary depending on the model.

Channel Menu

Seeing Channels

Channel List

Add, delete or set Favorite channels and use the program guide for digital broadcasts. Select a channel in the All Channels, Added Channels, Favorite or Programmed screen by pressing the up/down buttons, and pressing the ENTER button. Then you can watch the selected channel.



- All Channels**: Shows all currently available channels.
- Added Channels**: Shows all added channels.
- Favorites**: Shows all favorite channels.
- Programmed**: Shows all currently reserved programs.

- Using the remote control buttons with the Channel List
 - Green (Zoom): Enlarges or shrinks a channel number.
 - Yellow (Select): Selects multiple channel lists. Select desired channels and press the Yellow button to set all the selected channels at the same time. The check mark appears to the left of the selected channels.
 - Tools: Displays the Channel List option menu. (The Options menus may differ depending on the situation.)

Channel Status Display icons

Icons	Operations
✓	A channel selected.
♥	A channel set as a Favorite.
⊙	A reserved program.
⏸	A program currently being broadcast.

Memorizing channels

Antenna (Air / Cable) Tools: Before your television can begin memorizing the available channels, you must specify the type of signal source that is connected to the TV (i.e. an Air or a Cable system).

Auto Program

- When selecting the Cable TV system: Selects the cable system. STD, HRC and IRC identify various types of cable TV systems. Contact your local cable company to identify the type of cable system that exists in your particular area. At this point, the signal source has been selected.
- After all the available channels are stored, it starts to remove scrambled channels. The Auto program menu then reappears.
- Press the ENTER button to stop the channel store during Auto Program.

How to Stop Auto Programming

- Press the ENTER button.
- A message will ask Stop Auto Program? Select Yes by pressing the left or right button.
- Press the ENTER button.

Other Features

- Clear Scrambled Channel**: This function filters out scrambled channels after Auto Program is completed. This process may take up to 20-30 minutes. Press the ENTER button to stop the Clear Scrambled Channel. This function is only available in Cable mode.

Channel List

- Channel List Option Menu Tools**: Set each channel using the Channel List menu options. Option menu items may differ depending on the channel status.
- Add / Delete**: Delete or add a channel to display the channels you want.
 - All deleted channels will be shown on the All Channels menu.
 - A gray-colored channel indicates the channel has been deleted.
 - The Add menu only appears for deleted channels.
 - Delete a channel from the Added Channels or Favorite menu in the same manner.
- Add to Favorite / Delete from Favorite Tools**: Set channels you watch frequently as Favorites.
- Timer Viewing**: You can set a desired channel to be displayed automatically all the set time, even when you are watching another channel. Set the current time first to use this function. Only memorized channels can be reserved.
- Reserved programs will be displayed in the Programmed menu.
- When a digital channel is selected, press the Next Program button to view the digital program. If you select the ENTER (Schedule) button on the next program, you can set Timer Viewing directly.

- Channel Name Edit** (analog channels only): Assign your own channel name.
- Select All**: Select all the channels in the channel list.
- Deselect All**: Deselect all the selected channels.
 - You can only select Deselect All when one or more channels are selected.
- Auto Program**: Scans for a channel automatically and stores in the TV.
- Programmed** (in Channel List): You can view, modify or delete a show you have reserved to watch.
 - Change Info: Change a show you have reserved to watch.
 - Cancel Schedules: Cancel a show you have reserved to watch.
 - Information: Display a show you have reserved to watch. (You can also change the reservation information.)
 - Select All / Deselect All: You can select or deselect all channels in the channel list.

Channel Mode

Change the channel mode directly between Added Channels and Favorite Channels.

- The Favorite Channels is enabled only when you set Add to Favorite.

Fine Tune

- (analog channels only)
- If the reception is clear, you do not have to fine tune the channel, as this is done automatically during the search and store operation. If the signal is weak or distorted, fine tune the channel manually.
 - Fine tuned channels that have been saved are marked with an asterisk "*" on the right-hand side of the channel number in the channel banner.
 - To reset the fine-tuning, select Reset.

Picture Menu

Mode Tools

- Select your preferred picture type.
- When connecting a PC, you can only select Entertain and Standard.
 - Dynamic: Suitable for a bright room.
 - Standard: Suitable for a normal environment.
 - Movie: Suitable for watching movies in a dark room.
 - Entertain: Suitable for watching movies and games. Only available when connecting a PC.

Backlight / Contrast / Brightness / Sharpness / Color / Tint (G/R)

- Your television has several setting options for picture quality control.
- When connecting a PC, you can only make changes to Backlight, Contrast, Brightness and Sharpness
- Advanced Settings** (available in Standard / Movie mode): Compared to previous models, new Samsung TVs have a more precise picture.
 - When connecting a PC, you can only make changes to Gamma and White Balance.
 - Color Space (Auto / Native): Adjusts the range of colors available to create the image.
 - White Balance: Adjusts the color temperature for a more natural picture.
 - R-Offset / G-Offset / B-Offset: Adjusts each color's (red, green, blue) darkness.
 - R-Gain / G-Gain / B-Gain: Adjusts each color's (red, green, blue) brightness.
 - Reset: Resets the White Balance to it's default settings.
 - Gamma: Adjusts the primary color intensity.
 - Dynamic Contrast (Off / Low / Medium / High): Adjusts the screen contrast.
 - Black Tone (Off / Dark / Darker / Darkest): Select the black level to adjust the screen depth.
 - Flesh Tone: Emphasize pink "flesh tone".
 - Motion Lighting (Off / On): Reduce power consumption by brightness control adapted motion. Available in Standard mode only.

Picture Options

- When connecting a PC, you can only make changes to the Color Tone, Size and HDMI Black Level.
- Color Tone (Cool / Standard / Warm1 / Warm2)**: Warm1 or Warm2 will be deactivated when the picture mode is Dynamic.
- Size**: Your cable box/satellite receiver may have its own set of screen sizes as well. However, we highly recommend you use 16:9 mode most of the time.
- 16:9**: Sets the picture to 16:9 wide mode.
- Zoom1**: Use for moderate magnification.
- Zoom2**: Use for a stronger magnification.
- Wide Fit**: Enlarges the aspect ratio of the picture to fit the entire screen.
- 4:3**: Sets the picture to basic (4:3) mode.
 - Do not watch in 4:3 format for a long time. Traces of borders displayed on the left, right and center of the screen may cause image retention (screen burn) which are not covered by the warranty.
- Screen Fit (DTV)**: Displays the full image without any cut-off when HDMI (720p / 1080i / 1080p) or Component (1080i / 1080p) signals are input.
- HD High Definition: 16:9 - 1080i/1080p (1920x1080), 720p (1280x720)
- Settings can be adjusted and stored for each external device you have connected to an input on the TV.
- Picture Sizes available by Input Source:

Input Source	Picture Size
ATV, AV, Component (480, 480p)	16:9, Zoom1, Zoom2, 4:3
DTV(1080i, 1080p), Component (1080i, 1080p), HDMI (720p, 1080i, 1080p)	16:9, Wide Fit, 4:3, Screen Fit

- Digital Noise Filter (Off / Low / Medium / High / Auto)**: If the broadcast signal received by your TV is weak, you can activate the Digital Noise Filter feature to reduce any static and ghosting that may appear on the screen.
 - When the signal is weak, try other options until the best picture is displayed.
- HDMI Black Level (Normal / Low)**: Selects the black level on the screen to adjust the screen depth. Available only in HDMI mode (RGB signals).
- Film Mode (Off / Auto)**: Sets the TV to automatically sense and process film signals from all sources and adjusts the picture for optimum quality. Available in ATV, DTV(interlace), AV, COMPONENT (480i / 1080i) and HDMI (480i / 1080i).
- LED Motion Plus (Off / On)**: Removes drag from fast scenes with a lot of movement to provide a clear picture.

Picture Reset

