



<http://www.samsungyepp.com>

Samsung Electronics America Inc.
105 Challenger Road, Ridgefield Park, N.J. 07660

SERVICE DIVISION
400 Valley Road, Suite 201
Mount Arlington, NJ 07856
TEL: 1-800-SAMSUNG (1-800-726-7864)

AH68-01292B (Rev 3.0)

SAMSUNG

YP-55



DIGITAL AUDIO PLAYER

yepp™

MP3 & WMA Playback
Removable Storage Device
Encoding Function
3D Sound
Upgradable
FM Reception



Contents

Preparations

Safety Instructions	4
Features	6
Components	9
Location of Controls (yep)	10

Connection to Computer

Connecting yep to PC	12
Manual Installation of USB Driver	16
Using the removable storage(PC)	20
● Downloading/Uploading files	20
● Disconnecting the USB cable	21
● Formatting	22
Installing yep studio	23
● To View Help on yep studio	25
Connecting yep to Macintosh	26
Using the removable storage(Macintosh)	29
● Downloading/Uploading files	29
● Disconnecting the USB cable	30
● Formatting	31

Basic Usage

Listening to Music with yep	32
Setting up Volume/Hold Functions	33
Changing Modes	34
Recording Voice	35
MP3 Encoding	36
Searching for Music/Voice Files	38
Listening to FM Radio	40
FM Encoding	42

Additional Usage

Loop Repeating	43
Setting up SRS	44
Setting up MENU	45
Repeating Tracks	46
Setting up EQ	47
Managing Files	48
● Deleting	48
● Formatting	49
Setting up DIRECT PLAY	50
Customizing Options (Display)	51
● DISPLAY	52
● BACKLIGHT	52
● BEEP	53
● CONTRAST	53
● SCROLL SPEED	54
● POWER OFF TIME	54
● DEFAULT VOLUME	55
● WOW LEVEL	55
● ENCODE	56

Appendix










Description of Buttons (yep player)	58
MENU Table	60

Customer Support

Troubleshooting	62
Specifications	64
Safety Information	66
Warranty	68

Safety Instructions

Read and understand all the instructions to avoid injury to yourself and damage to the equipment.

<p>Do not expose to extreme temperatures (above 95°F or below 23°F). Do not expose to moisture.</p> 	<p>Do not apply excessive pressure to the device.</p> 	<p>Do not let any foreign matter spill into the device.</p> 
<p>Do not place heavy objects on top of the device.</p> 	<p>Do not expose to chemicals such as benzene and thinners.</p> 	<p>Remove batteries when the device is left unused for a long period of time.</p> 
<p>Do not expose to direct sunlight or heat sources.</p> 	<p>Do not store in dusty areas.</p> 	<p>Do not try to disassemble and repair the device yourself.</p> 

Earphones

Follow Traffic Safety Instructions

- Do not use the earphones while driving an automobile or riding a bicycle. It's not only dangerous, but also against the law.
- It may cause an accident if you turn up the volume of the earphones while walking down the street, especially crossing at intersections.

Protect your ears

- Do not turn up the volume too high. Doctors warn against prolonged exposure to high volume.
- Stop using the device or turn the volume down if you have ringing in your ears.

Ambient operating conditions

- Ambient temperature: 5°C ~ 35°C (41°F ~ 95°F)
- Humidity : 10 ~ 75%

Environmental Information

- Follow local guidelines for waste disposal when discarding packages, batteries, and old electronic appliances.
- Yepp packages use cardboard, polyethylene etc., and do not use any unnecessary materials.

DIGITAL SOUND yepp'

Removable Storage Device

You can easily copy and paste files to the yepp player using Windows Explorer.

Featuring an Encoding Function

You can make a MP3 file out of an source using the ENC jack on the main unit.

You can also convert an FM radio program into an MP3 file in real time.

Upgradable

You can upgrade the built-in programs when available.

Add functions, CODEC, etc.

Please check the yepp home page (<http://www.samsungyepp.com>) for upgrades.

DIGITAL SOUND yepp'

MP3 & WMA Playback

MP3 is an MPEG1 Layer3 audio format.

WMA is a Microsoft Windows Media audio format.

FM Reception

Listening to an FM program is made easy with Auto Search and Frequency Memory functions.

Featuring 3D Sound

The 3D feature adds spaciousness to the sound.

DIGITAL SOUND yepp'

Voice Recording Function

You can do a Voice Recording with high quality and use it for a conference.

Sound

You can adjust equalizer manually.

15-Hour Continuous Play

This unit uses one AAA/LR03 alkaline battery. Operation can last up to 15 hours. Actual playing time may vary according to the type and capacity of the battery.

Components



yepp'
Player



Earphone
AH30-00056B



USB Cable
AH39-00498A



User manual
AH68-01292B



Installation CD
AH80-00049B



One Battery
(1.5V AAA/LR03 type)
4301-000115



Neck Strap
AH61-01370A



Carrying case
AH61-01369A



Direct Connect
USB Adaptor
AH39-00489A

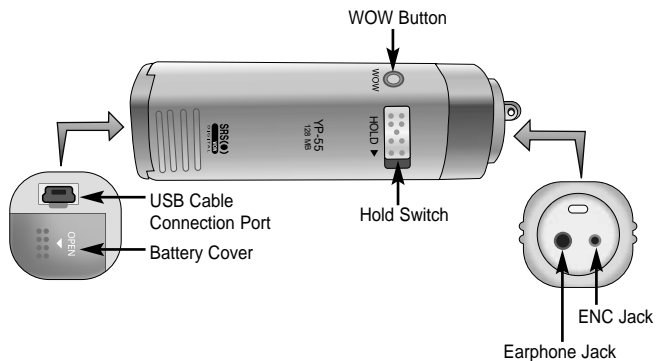
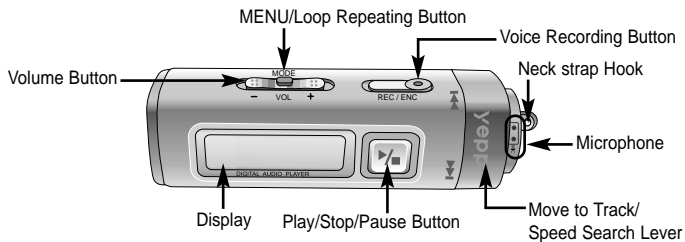


Line Cable
AH39-00488A

Model	YP-55 V
Built-in memory	256MB

- The capacity of the useable built-in memory is less than indicated as the internal firmware uses a part of the memory as well.
- Design of accessories is subject to change for improvement without notice.

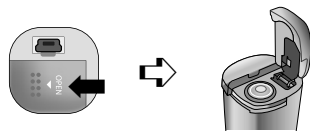
Location of Controls (yopp)



Display



Inserting a Battery



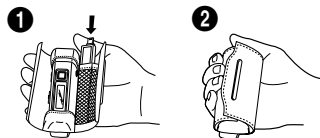
- Slide the cover in the direction of the arrow to open.
- Insert a battery to the right poles +, - and push-close the cover in the direction the arrow as indicated.

Note :

- Do not place heavy objects on the cover.

How to Use the Carrying Case

Use as follows.



Connecting yepp to PC

System Requirements.

- Pentium 133MHz or greater
- Windows 98 SE/ME/2000/XP
- 20MB of available hard disk space
- CD-ROM drive
- (double speed or greater)
- USB port (1.1) supported
- VGA graphic

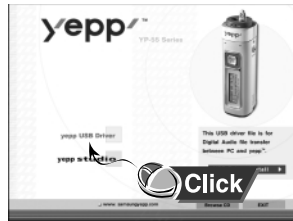
Note :

- Install the operating system in Administrator Account mode for Windows 2000 or XP. Otherwise, installation will not be completed.
- Windows ME, 2000 and XP can recognize the driver without installing the provided program. However, you must install the program in order to format yepp and upgrade firmware.
- If the YP-55 program has not been installed in Windows 98, then it will not communicate with your removable disk. You must install the USB driver file first.

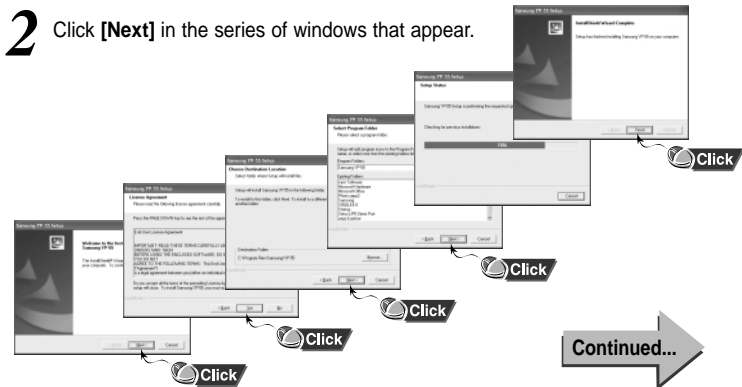
Before connecting yepp to PC, make sure to install USB driver. If "Add New Hardware Wizard" appears, press the [Cancel] button and install USB driver.

Installing software

- 1 Insert the Installation CD into CD-ROM drive. The picture shown below appears. Select [USB Driver Install].



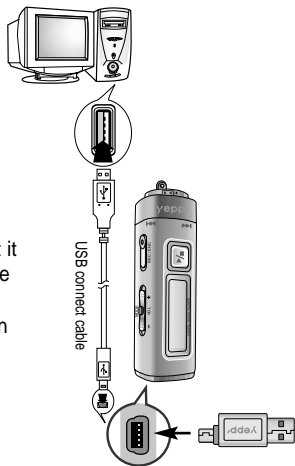
- 2 Click [Next] in the series of windows that appear.



When installation is completed, connect yepp to PC and use it as shown on the next page.

Connecting yepp to PC with USB cable

- Plug one end of the USB cable into the USB port on the back of the PC.
- Connect the opposite end of the USB cable to the USB cable port on the bottom of the yepp.
 - If you disconnect the USB cable from your PC while implementing a command or initializing during USB driver installation, your PC may not function correctly.
 - The yepp will automatically turn on.
- USB driver is installed with a message saying that it is searching for a new device. You may not see the display screen during installation. Go to the device manager to check that installation has been successfully completed.
- Upon installation of the USB driver "SAMSUNG YP-55" will appear in the [System Properties] → [Device Manager].



Note :

How to check USB driver

Windows 98:

Control Panel → System → Device Manager → Universal Serial Bus controllers/Samsung YP-55 Class

Windows 2000:

Control Panel → System → Hardware → Device Manager → Universal Serial Bus controllers → USB Mass Storage Device

Windows XP:

Control Panel → System → Hardware → Device Manager → Universal Serial Bus controllers → USB Mass Storage Device

- When USB driver is not installed automatically, refer to next page.

Note :

For WinXP, the following window will appear whenever you connect the USB cable to your yepp.



Manual Installation of USB Driver

Go to "Downloading/Uploading files" on page 20 if the USB driver is in place.
Follow these steps if the USB driver is not in place :

- 1 Check the device manager.
Windows 98,ME:
Control Panel → **System** → **Device Manager**
Windows 2000:
Control Panel → **System** → **Hardware** → **Device Manager**
Windows XP:
Control Panel → **System** → **Hardware** → **Device Manager**



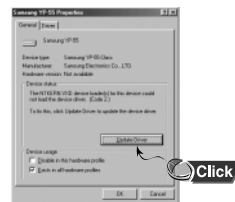
- 2 Check if there is a device listed with an exclamation point or a question mark (displayed as unknown device or USB device).

- 3 Double click on the device listed with an exclamation point or a question mark.

Note :

- If you are using Windows 2000 and your version of Windows does not recognize the USB driver please download and install the latest service pack from windowsupdate.microsoft.com
- The installation method may vary depending on the type of PC or operating system. Contact your PC dealer or service center for installation information.
- If errors occur continuously when you install the USB driver, reconnect the USB cable after rebooting your system.

- 4 After selecting the driver, click on **[Update Driver]**.



- 5 Select a compatible driver, click on **[Next]** to finish.



For Windows 98, refer to page 18.

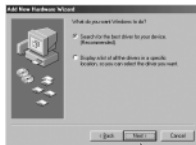
Continued...

In Windows 98

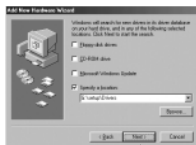
Click **[Next]** button in the series of windows that appear.



Click

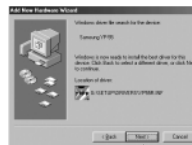


Click



Click

USB driver location
[CD ROM]setup\Drivers



Click



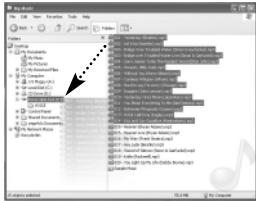
Click

- You must reboot your computer to complete the installation.

Using the removable storage

Downloading/Uploading files

- 1 Turn on the yepp and connect yepp to PC.
- 2 Open Windows Explorer on PC.
- 3 Select the file to save and drag-and-drop it into the removable disk icon.
(In numerical, alphabetical order)



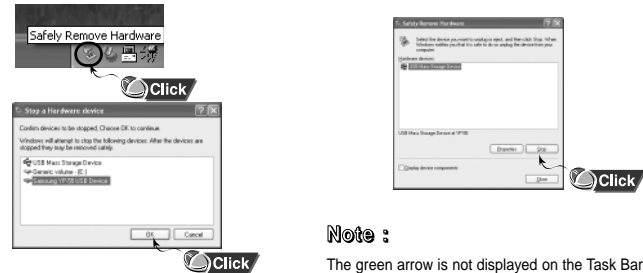
Notice :

- The "WRITING/READING" message will appear during file download or upload. Disconnecting the USB cable while "WRITING/READING" is displayed may cause malfunction of the unit.
- Files within a user created folder can only be played in Music Mode.
- The order of music files is not relative to the replay order when you select a Removable Disk in Windows Explorer.

Disconnecting the USB cable

After completing the file transmission, you must disconnect the cable in the following way:

- 1 Double-click on the green arrow in the taskbar on the bottom right of the window. Disconnect the USB cable.
- 2 Select the USB device, and then press the [Stop] button.



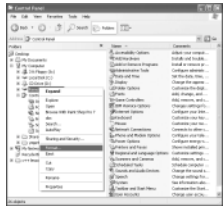
Note :

The green arrow is not displayed on the Task Bar in Windows 98 system. If "READY" message is shown in Display window, please disconnect the USB cable.

Installing yepp studio

Formatting

1 Select the removable disk icon and click the right mouse button to select **[Format]**.



2 Press the **[Start]** button.

- All saved files will be formatted.
- You can change the name of removable disk by selecting **[Volume label]**.



Click

Notice :

- If you format yepp in the PC without installing the provided program, it may not read the data.
- Care must be taken as formatted files can not be recovered.
- By formatting, all previously preset menus will be initialized.

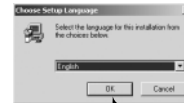
Note :

- You can format by executing "YP-55 Format" located under **[Start] → [All Programs]**

1 Insert the Installation CD into CD-ROM drive.
Select **[yepp studio]**.



2 Select language



Click

Continued...

- 3** Click **[Next]** in the series of windows that appear.
- Please refer to Help for more information on how to use Yepp Studio.



To View Help on yepp Studio:

Run Yepp Studio and press **F1**.

- Help will appear.

Move the arrow to the top of yepp Studio and right click on the mouse. The following selection window will appear.

- Click on Help and the Help window will appear.



Note :

- Music recognition technology and related data are provided by Gracenote and Gracenote CDDB® Music Recognition ServiceSM.
- CDDB is a registered trademark of Gracenote. The Gracenote logo and logotype, the Gracenote CDDB logo and logotype, and the "Powered by Gracenote CDDB" logo are trademarks of Gracenote. Music Recognition Service and MRS are service marks of Gracenote.

Connecting yepp to Macintosh

System Requirements.

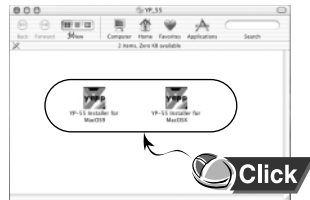
- 20MB of available hard disk space
- System Memory 64MB or greater
- CD-ROM drive
(double speed or greater)
- USB(1.1) port supported
- Macintosh OS 9.X/10.2.6

Note :

- The driver can be recognized by Macintosh without installing an extra program. The appropriate program however must be installed to format and upgrade the firmware.
- You cannot install softwares for YP-55 in Macintosh OS 10.0 - 10.2.5.

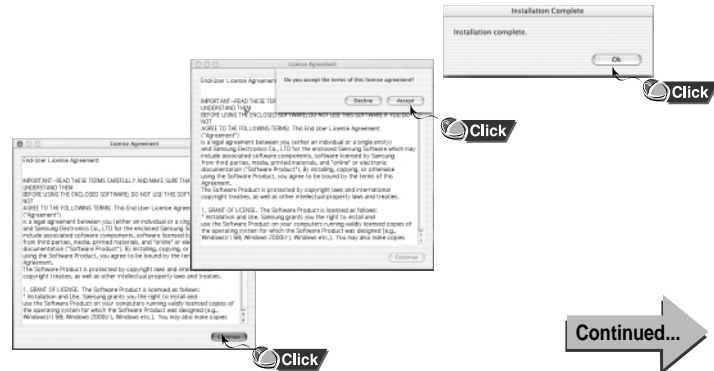
Installing software

- 1 Insert the Installation CD into CD-ROM drive. The picture shown below appears. Select **[Samsung YP-55 Installer]**.



- ✦ When you install a program in Macintosh OS X, it may check the user login information.

- 2 After installation is complete, click on the **OK** button.



Continued...

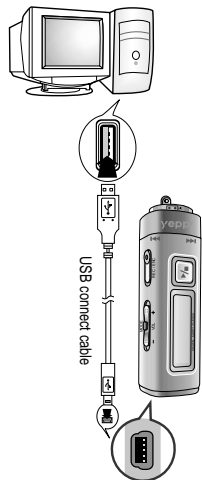
Using the removable storage

Connecting yepp to Macintosh with USB cable

3 Plug one end of the USB cable into the USB port on the back of the Macintosh.

4 Connect the opposite end of the USB cable to the USB cable port on the bottom of the yepp.

- The yepp will automatically turn on.
- A untitled or unlabelled portable disc is created.

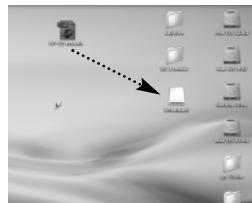


Downloading/Uploading files

1 Turn on the yepp and connect yepp to Macintosh.

2 A untitled or unlabelled portable disc will appear on the Macintosh screen.

3 Select the file to save and drag-and-drop it into the removable disk icon.



Notice :

- The "WRITING/READING" message will appear during file download or upload. Disconnecting the USB cable while "WRITING/READING" is displayed may cause malfunction of the unit.
- Make sure to empty the trash after deleting a file from the portable disc in order to free up space to download additional files.

Disconnecting the USB cable

After completing the file transmission, you must disconnect the cable in the following way:

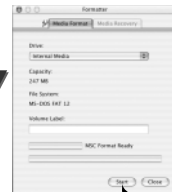
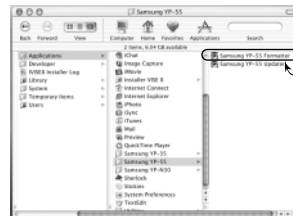
- 1 Drag and drop the portable disc to the trash.



- 2 Disconnect the USB cable.
 - Disconnecting without deleting the portable disc may cause a malfunction.

Formatting

- 1 Click on Application Program and select **[Samsung YP-55 Formatter]**.
- 2 Press the **[Start]** button.
 - All saved files will be formatted.
 - You can change the name of removable disk by selecting **[Volume label]**.



Notice :

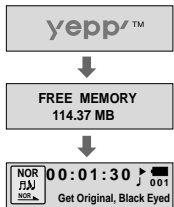
- If you format yepp in the Macintosh without installing the provided program, it may not read the data.
- Care must be taken as formatted files can not be recovered.
- By formatting, all previously preset menus will be initialized.

Listening to Music with yepp

First, insert the battery and connect the earphones to the player.

Playing Music (Power On)

When you press the ►/■ button, the yepp logo appears and a music/voice file is played.



Stopping Music (Power Off)

When you press the ►/■ button while playing, the music stops. If no buttons are pressed within 10 seconds (changes depending on settings), the yepp automatically powers off.


- You can also turn off the power by pressing and holding the ►/■ button on the main body.



- Note :**
- WMA files can only be played at bit rates between 48Kbps and 192Kbps. [supplied by Windows Media Player (Ver 8.0)] WMA files less than 48Kbps may not be played.
 - Power off time can be set in the MENU mode.

Setting up Volume/Hold Functions

Adjusting the Volume

Move the  button on the side of the yepp player to adjust the volume while playing.


Note :

- Volume ranges from 00 to 30.
- Press to adjust the volume by one level. Press and hold to increase or decrease the volume in greater increments.



HOLD Function


Under Hold mode, buttons will not work.



Slide the  switch on the player in the direction of the arrow.

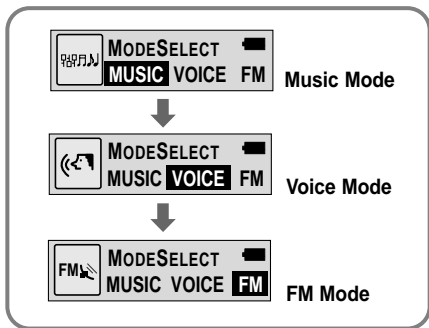
- When a button is pressed, "HOLD!" message will appear on the display.



Changing Modes

1 Press the  button briefly while the player is stopped.


2 Move to the mode you want by using the  button, and then press the  button.




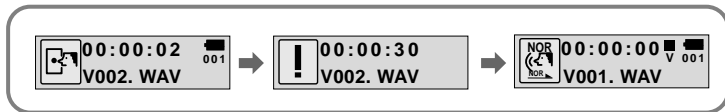
- Note :**
- You will exit from the Mode Switching function if no action is taken for 15 seconds or if another button is pressed during mode switching.
 - The Voice Mode settings will not be saved if the mode is switched to the Music or FM modes or if the power is turned OFF.

Recording Voice

To Record Voice

1 Slide the  switch to the ENC position to begin Voice Recording.

2 To stop the recording, move the  switch in the opposite direction and a new voice file will be created.

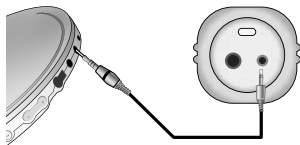



Note :


- Recording is done in the order of V001,V002.....
- If the Memory is full, the Voice Recording is stopped automatically.
- The Voice Recording is also enabled in Music Mode.
- The backlight will not illuminate during a Voice Recording.
- The number of saved voice files and hours available for recording will be displayed when Voice Mode is selected while the player is stopped.
- To Record Voice, be sure nothing is connected to the ENC jack.
- Voice Recording does not work in FM Mode or when the Line cable is connected.

MP3 Encoding

- 1** Connect the Audio Output port on the external audio source (or the Line Out port) to the ENC port on the device with the Line cable.




- 2** Slide the  switch to the ENC position begin MP3 encoding.

- 3** Slide the  switch to the REC position while recording to stop the encoding, and a new encoding file will be created.

- Recording will take place in the order of L001, L002, L003.... When the recording is finished, the files will be saved as MP3 files.

Note :

- Bit Rates can be set within the range of 32Kbps-128Kbps.
- To pause during Encoding, press the  button. Press the button once again to recommence recording.
- Volume can be adjusted from level 0 to 10 while monitoring the Encoding.

Notice :

- Do not disconnect the Line cable during Encoding.
- If the battery is not charged enough, encoding will not be done.
- Adjust the volume of the external audio source to a suitable level and encode it. If the volume level is extremely high, the sound quality may not be good.

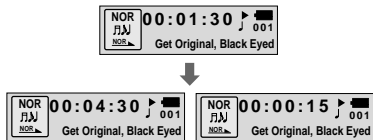
Searching for Music/Voice Files

Note :

- VBR(Variable Bit Rate) file: MP3 file whose compression rate changes when played.
- With VBR files, Turning the lever to the \downarrow direction within 5 seconds from the start of the track may not result in the previous track playing.
- With VBR files, the actual running time may differ from that of the player display.
- This player may not play back MPEG1 LAYER1 files.

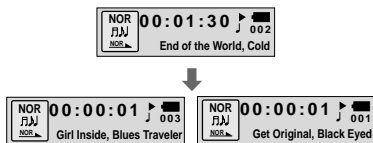
Searching for Specific Parts in PLAY Mode

- To find a certain track, turn the \uparrow/\downarrow lever to the up or down during play.
- Release the lever and the lever will return to its original position. Playing will recommence in the normal way.



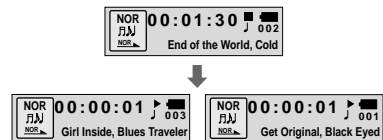
Searching for Music Files in PLAY Mode.

- The next track will play if you turn the lever to the \uparrow direction during play.
- To move to and play the previous track, turn the lever to the \downarrow direction within 5 seconds of the beginning of play. To move to and play the current track from the beginning, turn the lever to the \downarrow direction 5 seconds after the beginning of play.



Searching for Music Files in STOP Mode.


Turn the lever to the up or down while the player is stopped. It moves to the \uparrow/\downarrow track and plays it.

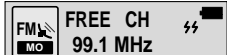


Listening to FM Radio


While the player is stopped, select FM Mode by using the  button.

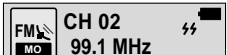
Manual Search for a Frequency

Turn the  lever briefly to find the frequency you want.




Manual Storage of a Frequency


Upon finding a frequency you want, press the  button to store the frequency.

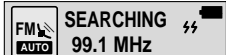


Note :

- To exit from FM Mode, press the  button.
- Mono (MO) or Stereo (ST) is automatically selected.

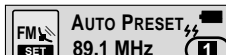
Automatic Search for a Frequency

Turn and hold the  lever to automatically find and tune in to a transmitted frequency.



Automatic Storage of a Frequency

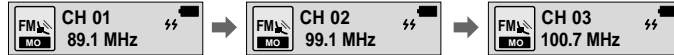
- Press and hold the WOW button while in FM Mode.
- Frequencies within the range of 88MHz to 108MHz are automatically selected and stored.
- Frequencies are automatically stored, starting from 1.





Number of Channels to be Stored

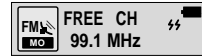
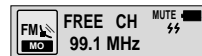
Searching Stored Frequencies

- Press the **WOW** button briefly while in FM Mode.
- The stored frequencies are successively searched.



MUTE Function

- Press and hold the  button while in FM Mode.
- As soon as 'MUTE' appears on the display no sound will be heard.
- To cancel the MUTE function, adjust the volume with  Switch.





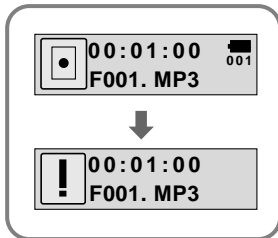
Note :

- You can store up to 20 frequencies.
- You can replace an existing frequency with a new one but you cannot delete a stored frequency.

FM Encoding

FM Encoding to MP3


- 1 Slide the  switch to the ENC position during FM
 - Encoding of the currently transmitted FM broadcast begins.
- 2 Slide the  switch to REC.
 - A file is created and the encoding stops.
 - Files are saved in order of F001, F002, F003... and stop automatically when the memory is full.



Loop Repeating

Loop Function

Starting Point

While playing music files, press the  button briefly at the beginning of the loop you want to set.

A appears in the display.





Ending Point

Press the  button briefly again to set the end of the loop.

A↔B appears in the display.
The loop is played repeatedly.

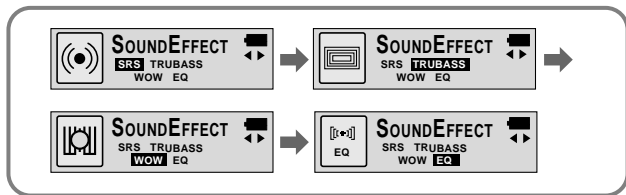


Note :

- Press the  button briefly to cancel the loop.
- Loop Repeat is automatically released if you Speed Search with  button.

Setting up SRS (Sound Retrieval System)

- 1 Press the **WOW** button while in Music Mode.
- 2 Press the **WOW** button to move, and then press and hold the **SRS** button to select the mode you want.





- **SRS** : You will hear 3D Stereo sound.
- **TRUBASS**: This is a bass boost feature that adds fullness to the sound.
- **WOW** : This feature allows you to enjoy the SRS and Trubass features simultaneously.
- **EQ** : Plays at the last EQ setting you made.


Note :

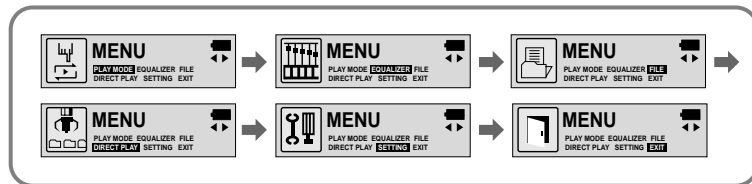
- **SRS(●)**
WOW is a trademark of SRS Labs, Inc.
WOW technology is incorporated under license from SRS labs, Inc.
- Please adjust the volume to a suitable level, as the volume may increase in the SRS setting.
- This unit supports sampling frequencies of 32KHz, 44.1KHz or 48KHz.
- You can set SRS functions only in Music Mode.

Setting up MENU

To switch to Menu Mode, press and hold the  button while in Music/Voice Mode.

Press the  button briefly to select the menu you want.

To exit from Menu Mode, press and hold the  button once again.





- **PLAY MODE** : To select track repeating mode.
- **EQUALIZER** : To use equalizer function.
- **FILE** : To delete or format music files.
- **DIRECT PLAY** : It plays files encoded in Music, FM or Line.
- **SETTING** : To change the basic setup options of the display.
- **EXIT** : To exit MENU.

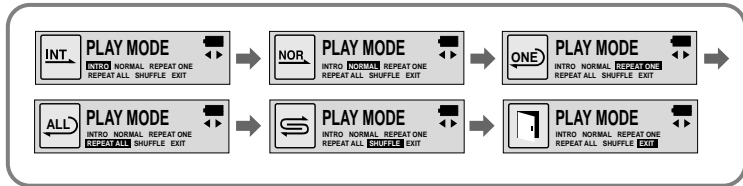
Note :

- In MENU mode, no input for 15 seconds will cancel the MENU mode.
- Menu mode will be released if any button other than the MODE button is pressed.

Repeating Tracks

Track Repeating Function


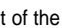
- 1 In **MENU**, select **PLAY MODE**. (refer to “Setting up MENU”)
- 2 In **PLAY MODE**, use the  button to move to the mode you want and press the  button to select.

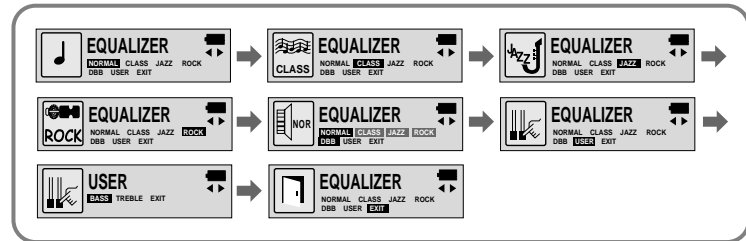


- **INTRO**: To play the first 10 seconds of each track.
- **NORMAL**: To play all the tracks in order one time.
- **REPEAT ONE**: To repeat one track.
- **REPEAT ALL**: To repeat all tracks.
- **SHUFFLE**: To play tracks at random.
- **EXIT**: To move to the upper menu.

Setting up EQ

EQ Function

- 1 In **MENU**, select **EQUALIZER**. (refer to “Setting up MENU”)
- 2 In **EQ**, use the  button to move to the setting you want (out of the 4 settings) and press the  button to select.
 - Select the **DBB** Mode if you want to fine-tune the sound.
- 3 If you want to manually adjust the equalizer, select **User** and **Bass/Treble**.
 - The adjustment range of Bass/Treble is 0 to 10.




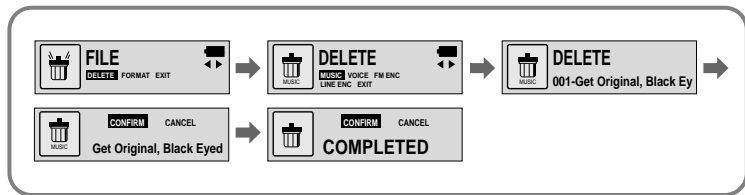
Note :

- **DBB** is for Dynamic Bass Booster, which enhances bass response.

Managing Files

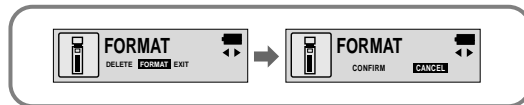
Deleting

- 1 In **MENU**, select **FILE**. (refer to “Setting up MENU”)
- 2 In **FILE**, select **DELETE** and the mode (Music or Voice) the target file is in.
- 3 Move to the file you want to delete and then press the  button. Select **CONFIRM** and then select **CANCEL** to exit from the setup.



Formatting

- 1 In **MENU**, select **FILE**. (refer to “Setting up MENU”)
- 2 In **File**, select **FORMAT**.



Note :



- All files will be deleted when formatting the built-in memory.
- It is recommended that formatting be carried out on a PC that has the provided program installed as formatting in the Menu may take a long time.

Setting up DIRECT PLAY

DIRECT PLAY Function

- Set the player to this function for playing MP3 and FM encoded songs.

1 In **MENU**, select **DIRECT PLAY**. (refer to “Setting up MENU”)

2 In **DIRECT PLAY**, move to the mode you want by pressing the  button, and then press the  button to select.



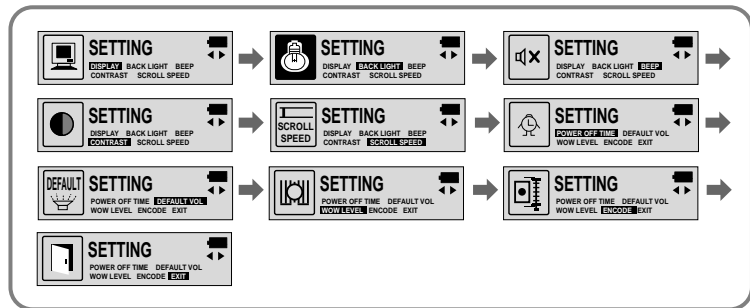
- **MUSIC**: To play music files that are downloaded in the music folder
- **FM ENC**: To play encoded files in the FM ENC folder
- **LINE ENC**: To play encoded files in the LINE ENC folder
- **EXIT**: To move to the previous menu

Customizing Options (Display)

Setting Function

1 In **MENU**, select **SETTING**. (refer to “Setting up MENU”)

2 In **SETTING**, use the  button to move to the function you want to change and select the function by using the  button.




DISPLAY

- **PLAY TIME:** displays current play time
- **REMAIN TIME:** displays remaining play time
- **USED SIZE:** displays using memory
- **FREE SIZE:** displays remaining memory




BACK LIGHT

- Use the  button to set the Backlight "ON" time.
- The setting range of Backlight-On Time is 0 to 10 seconds.
- * The backlight does not illuminate when the residual battery level is insufficient.



BEEP


- Use the  button to set the BEEP mode.
- **BEEP ON:** A beep sounds each time a button is pressed.
- **BEEP OFF:** No beep sounds when a button is pressed.

Note :

- No beep sounds while playing or recording of a music/voice file even when set to 'BEEP ON'.




CONTRAST

- Use the  button to set the Contrast.
- The setting range of the contrast, which adjusts the brightness of the screen, is 0 to 10.




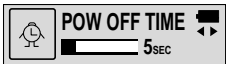
SCROLL SPEED

- Use the  button to set the Scroll Speed.
- The setting range of the scroll speed, which adjusts the speed of the track title flow, is 0 to 10.



POWER OFF TIME


- Use the  button to set the Power Off Time.
- The setting is 5 different levels ranging from 0 to 25 seconds. The power will turn off after the set time if no button is pressed when the playback ends.



Note :


- When '0 second' is set, the power will not turn off but will remain in Standby Mode.

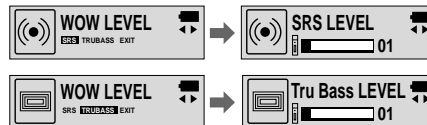
DEFAULT VOLUME

- Use the  button to set the Default Volume.
- The default volume setting range of the unit is 0 to 25. If the Volume is above 25(26-30) when you turn the device off, it will default to 25 when the device is turned back on.
- If the Volume is set to 25 or lower when you turn the device off, it will return to that setting when it is turned back on.




WOW LEVEL

- The levels of SRS and TRUBASS can be adjusted.
- Select the mode you want by using the  button.
- The level for SRS and TRUBASS can each be set within the range of 0 to 10.



ENCODE

AUTO SYNC


- Use the  button to set the Encode AUTO SYNC.
- **ON:** Automatically creates a file for each track.
- **OFF:** All songs recorded in ENC mode are saved in a single file.

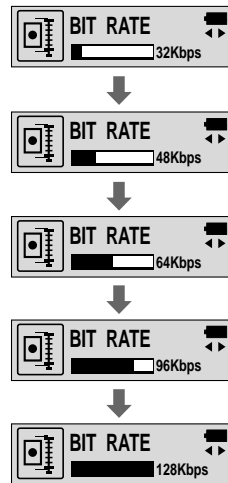
Note :

- What is Auto Sync?
Auto Sync senses the input sound during MP3 encoding. If there is no sound, encoding stops automatically. Otherwise, encoding keeps going. You can save MP3 files separately.
Example) If you encode a CD including 10 music files with MP3, 10 MP3 files are created automatically when set the Auto Sync to ON.
- Auto Sync function can support from 64Kbps to 128Kbps.



BIT RATE

- Use the  button to set the Encode BIT RATE.
- When encoding music into an MP3 file, you can select one of the following bit rates: 32Kbps, 48Kbps, 64Kbps, 96Kbps and 128Kbps.



Firmware Upgrade

1 Download the latest Firmware from www.samsungyepp.com

2 Install the latest Firmware program on your PC.

3 Connect to the USB port on your PC using the USB cable or adapter while holding the play button on the main body. If you press the Play button more than 5 seconds, the "Player Recovery Device" message is displayed on Device Manager as shown in the picture on the right.

4 Run the upgrade program.

5 When the program is running, the screen will show the progress.



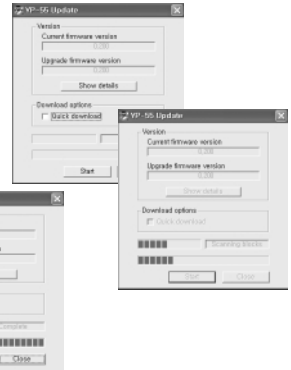
6 The upgrade window will appear when the Recovery process is complete. Ensure that 'Quick Download' is deselected. Click Start to begin the upgrade.

7 The upgrade is complete.




8 Reconnect the USB for the driver to be newly recognized.





Note :

- If you do not release Quick Download, you cannot proceed to upgrade.
- When the Quick Download is deselected, formatting will commence at the same time, and the saved file will be deleted.
- If your operating system is Windows 98, you will have to restart the YP-55 Upgrade program.



Description of Buttons (yebb player)

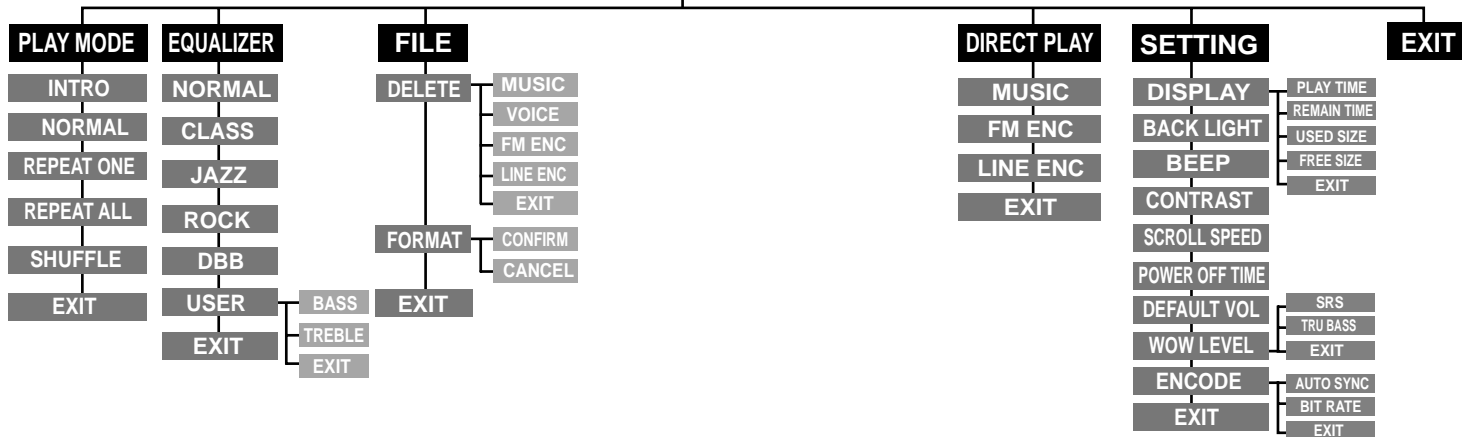
BUTTON	STATUS	PRESSING LENGTH	RESPONSE
	Power Off		Power On, and play
	Play		Pause(When no button is pressed for 10 seconds, yebb powers off automatically) Press and hold the 2 seconds Power Off.
	MENU Mode		Cancel
	Intro Play		Cancels Intro, returns to Play mode
	Play	Less than 1 second	Play the next track
	Play	Longer than 1 Second	Fast forward search in PLAY mode
	Stop/Pause		Play the next track
	FM Mode		Frequency Search
	MENU Mode		Cancel MENU
	Play	Short	Within 5 seconds from the start: Play the previous track After 5 seconds from the start: Play the beginning of the current track.

	Play	Longer than 1 Second	Fast reverse search in PLAY mode
	Stop/Pause		Play the previous track
	FM Mode		Frequency Search
 Volume	Play or Stop Mode		Volume increase/decrease
	MENU Mode		Move MENU
 Mode	Play	Short	Set the starting point for loop function
	During Loop Setting	Short	Loop mode
	Loop Mode	Short	Cancel loop mode
	Stop	Short	Changing modes (music ↔ voice ↔ FM)
	Play or Stop Mode	Longer than 2 Seconds	Enter MENU
	MENU Mode		Selection/Exiting MENU
 REC/ENC	Play or Stop Mode		Voice recording
	VoiceRecording/Encoding		Voice Recording/Encoding Stop
	Line in Connect		MP3 Encoding
	FM Mode		FM Encoding

MENU Table

MENU

● Select with the  button and move.



Troubleshooting

yepp does not work and the LCD displays nothing.

- Check the battery capacity
- Check to see if the battery is inserted to the right poles (+ , -)

In PLAY mode, music is not played after pressing the ►/■ button

- Check to see if MP3 or WMA files are saved in the built-in memory.
- Check to see if the HOLD switch is locked.
- Check if the REC button is on.
- Check if the memory is full.

Files cannot be downloaded.

- Check to see if the driver is installed correctly in the computer.
- Check the connection between yepp and computer.
- Check and/or replace the battery, turn on the yepp's power.
- The Windows98 operating system limits the number of files you can save.
Please save your music files by creating a subfolder.

Backlight does not work.

- Check the backlight setup.
- When the battery power is low, the backlight will go out.

The buttons do not work.

- Check setting of Hold switch.
- When the message "Please Reformat" is displayed, please format your YP-55 by installing the software using Windows Explorer.

yepp keeps being turned off.

- In Stop mode, the power is automatically turned off after ten seconds (changes depending on settings).
- Check to see if there are files saved in it.

Something's wrong with play time displayed during Play mode.

- "VBR SONG" message is displayed while VBR (Variable Bit Rate) file is playing.

LCD window is dark

- Check Contrast

Specifications

Model	YP-55
Built-in Memory capacity	256MB(YP-55 V)
Voltage	1.5VX1 (AAA/LR03 size alkaline battery)
Playing time	lasts up to 15hours (Alkaline battery, MP3 128Kbps, Vol level 20)
Dimensions/Weight	1.02 X 3.19 X 1.02 inches/1.6oz (without battery)
Case	Plastic/Aluminum
Noise Ratio	80dB with 20kHz LPF (1KHz 0dB)
Earphones Jack Output Power	5mW(Max 10mW)/CH (16 Ω)
Output Frequency Range	20Hz~20kHz
Operating Temperature Range	-5 ~ +35°C (23 ~ 95F)
FM Frequency	88.0 ~ 108.0 MHz
FM Signal to Noise Ratio	45 dB
FM T.H.D	1%
FM Useable Sensitiivity	10 dB
File Support	MPEG1/2/2.5 Layer3 (8Kbps ~ 320Kbps, 8KHz ~ 48 KHz) WMA (48Kbps ~ 192Kbps, 8KHz ~ 48KHz)

Memo

Safety Information

FCC Part 15: This equipment has been tested and found to comply with the limits for a Class B digital device, pursuant to Part 15 of the FCC Rules. These limits are designed to provide reasonable protection against harmful interference in a residential installation.

This equipment generates, uses, and can radiate radio frequency energy and, if not installed and used in accordance with the instructions, may cause harmful interference to radio communications. However, this notice is not a guarantee that interference will not occur in a particular installation. If this equipment does cause harmful interference to radio or television reception, which can be determined by turning the equipment off and on, the user is encouraged to try one or more of the following measures:

- Reorient or relocate the receiving antenna.
- Increase the distance between the equipment and receiver.
- Connect the equipment to an outlet on a circuit different from that to which the receiver is connected.
- Consult the dealer or an experienced radio/TV technician.

Modifications

Any changes or modifications not expressly approved by the grantee of this device could void the user's authority to operate the device.

Compliance

This product conforms to the following Council Directive:

- Directive 89/336/EEC, 92/31/EEC(EMC)

Declaration of Conformity

Name: Samsung Electronics Co., Ltd
Address: 416, Maetan-3Dong, Paldal-Gu, Suwon
City, Kyungki-Do, Korea 442-742

declares under its sole responsibility that the product

Trade Name: Samsung Electronics Co., Ltd
Model Number: YP-55

has been tested according to the FCC/CISPR22/95 requirements for Class B devices and found compliant with the following standards

EMI/EMC: AnSI C63.4 1992, FCC Part 15 Subpart B

This device complies with part 15 of the FCC Rules.

Operation is subject to the following two conditions:

1. This device may not cause harmful interference, and
2. This device must accept any interference received, including interference that may cause undesirable operation.

Party Responsible for Product Compliance

Samsung Electronics America
QA Lab.
3351 Michelson Dr. Suite #290
Irvine, CA92612

Warranty

Samsung warrants this product as free of defects in material, design and workmanship for the period of twelve(12) months from the original date of purchase.

If during the period of warranty this product proves defective under normal use and service, you should return the product to the retailer from whom it was originally purchased. The liability of Samsung and its appointed maintenance company is limited to the cost of repair and/or replacement of the unit under warranty. Return of the product for defective reasons should be to the original purchaser, however Samsung Authorized Dealers and Authorized Service Centers will comply with the warranty on the terms issued to purchasers in the country concerned, for further information relating to the Authorized Service Centers contact. 1-800-SAMSUNG (1-800-726-7864) www.samsungyepp.com

WARRANTY CONDITIONS:

1. The warranty is only valid when the warranty card is properly completed, and upon presentation of the proof of purchase consisting of original invoice or sales slip confirmation, indicating the date of purchase, dealers name, model, serial No. and product number. Samsung reserves the right to refuse warranty service if this information has been removed or changed after the original purchase of the product from the dealer.
2. Samsung's obligations are to the repair of the defective part, and at its discretion, replacement of the product (service exchange unit).
3. Warranty repairs must be carried out by an Authorized Samsung Dealer/Service Center. No reimbursement will be made for repairs carried out by non Samsung Centers, and warranty coverage will not be valid for any repairs or damage caused by such repairs.
4. Repair or replacement under the terms of this warranty does not give right to extension to or a new starting of the period of warranty. Repair or direct replacement under the terms of this warranty may be fulfilled with functionally equivalent service exchange units.

5. The warranty is not applicable in cases other than defects in material, design and workmanship. The warranty does not cover the following:

- ◆ Periodic checks, maintenance, repair and replacement of parts due to normal wear and tear.
- ◆ Abuse or misuse, including but not solely limited to the failure to use this product for its normal purpose or in accordance with Samsung's instructions usage and maintenance.
- ◆ The product has been used in conjunction with accessories not approved by Samsung for use with this product.
- ◆ Failure of the product arising from incorrect installation or use not consistent with technical or safety standards in current force, or failure to comply with product manual instructions.
- ◆ Accidents, Acts of God or any cause beyond the control of Samsung caused by lightning, water, fire, public disturbances and improper ventilation.

- ◆ Unauthorized modifications carried out for the product to comply with local or national technical standards in countries for which the Samsung product was not originally designed.
 - ◆ Repairs performed by non-authorized service centers such as opening of the product by a non-authorized person.
 - ◆ The model, serial No. and product number on the product has been altered, deleted, removed or made illegible.
6. This warranty does not affect the consumers statutory rights nor the consumers rights against the dealer from their purchase/sales agreement.

THERE ARE NO EXPRESS WARRANTIES OTHER THAN THOSE LISTED AND DESCRIBED ABOVE, AND NO WARRANTIES WHETHER EXPRESS OR IMPLIED, INCLUDING, BUT NOT LIMITED TO, ANY IMPLIED WARRANTIES OF MERCHANTABILITY OR FITNESS FOR A PARTICULAR PURPOSE, SHALL APPLY AFTER THE EXPRESS WARRANTY PERIODS STATED ABOVE, AND NO OTHER EXPRESS WARRANTY OR GUARANTY GIVEN BY ANY PERSON, FIRM OR CORPORATION WITH RESPECT TO THIS PRODUCT SHALL BE BINDING ON SAMSUNG, SAMSUNG SHALL NOT BE LIABLE FOR LOSS OF REVENUE OR PROFITS, FAILURE TO REALIZE SAVINGS OR OTHER BENEFITS, OR ANY OTHER SPECIAL, INCIDENTAL OR CONSEQUENTIAL DAMAGES CAUSED BY THE USE, MISUSE OR INABILITY TO USE THIS PRODUCT, REGARDLESS OF THE LEGAL THEORY ON WHICH THE CLAIM IS BASED, AND EVEN IF SAMSUNG HAS BEEN ADVISED OF THE POSSIBILITY OF SUCH DAMAGES. NOR SHALL RECOVERY OF ANY KIND AGAINST SAMSUNG BE GREATER IN AMOUNT THAN THE PURCHASE PRICE OF THE PRODUCT SOLD BY SAMSUNG AND CAUSING THE ALLEGED DAMAGE. WITHOUT LIMITING THE FOREGOING, PURCHASER

- ASSUMES ALL RISK AND LIABILITY FOR LOSS,
- DAMAGE OR INJURY TO PURCHASER AND
- PURCHASER'S PROPERTY AND TO OTHERS AND
- THEIR PROPERTY ARISING OUT OF THE USE,
- MISUSE OR INABILITY TO USE THIS PRODUCT SOLD
- BY SAMSUNG NOT CAUSED DIRECTLY BY THE
- NEGLIGENCE OF SAMSUNG. THIS LIMITED
- WARRANTY SHALL NOT EXTEND TO ANYONE
- OTHER THAN THE ORIGINAL PURCHASER OF THIS
- PRODUCT, IS NONTRANSFERABLE AND STATES
- YOUR EXCLUSIVE REMEDY.

- Some states do not allow limitations on how long an implied warranty lasts, or the exclusion or limitation of incidental or consequential damages, so the above limitations or exclusions may not apply to you. This warranty gives you specific legal rights, and you may also have other rights which vary from state to state.
- This product is for personal use only, and is only for use in compliance with the limitations of copyright and other laws.

To obtain warranty service, please contact
SAMSUNG at:
Samsung Electronics America, Inc.
400 Valley Road, Suite 201 Mount Arlington, NJ
07856
Tel: (973) 601-6000, Fax: (973) 601-6001
1-800-SAMSUNG (1-800-726-7864)
www.samsungyepp.com
081299