

User's Guide



Introduction

This user's guide explains how to use the PodFreq, the premium FM transmitter for your iPod. The PodFreq broadcasts to any analog or digital FM tuner, and enables you to transmit your iPod's music on any frequency from 88.3 to 107.7 MHz to a FM radio or tuner tuned to the same frequency. The PodFreq incorporates standard 6-Pin FireWire and mini-USB 2.0 ports in its design so that you may plug in a cable (sold separately) to transfer files between your computer and iPod, sync your files with iTunes®, and even charge your iPod (only through FireWire port) without removing it from the PodFreq.

Requirements

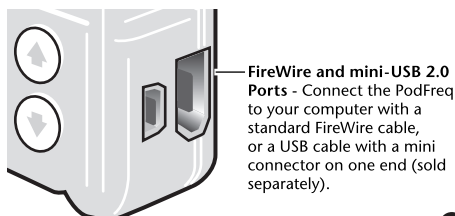
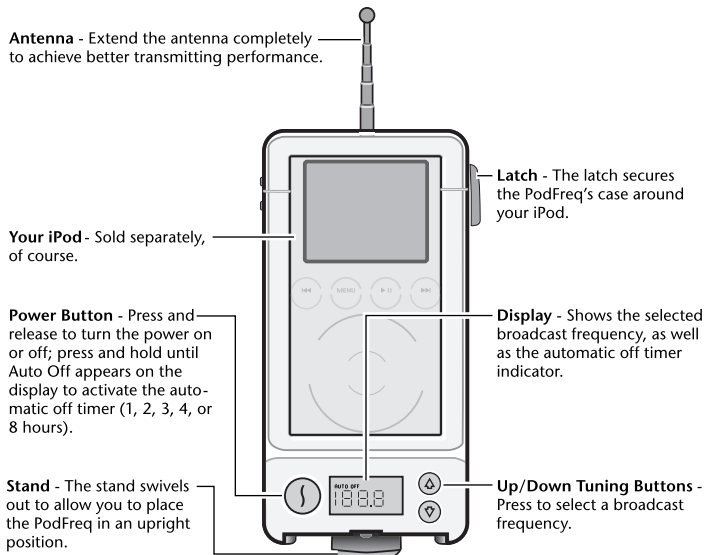
The PodFreq's requirements are simple:

- Any iPod with a dock connector (excluding the iPod mini)
- FM tuner (analog or digital, connected to an antenna)

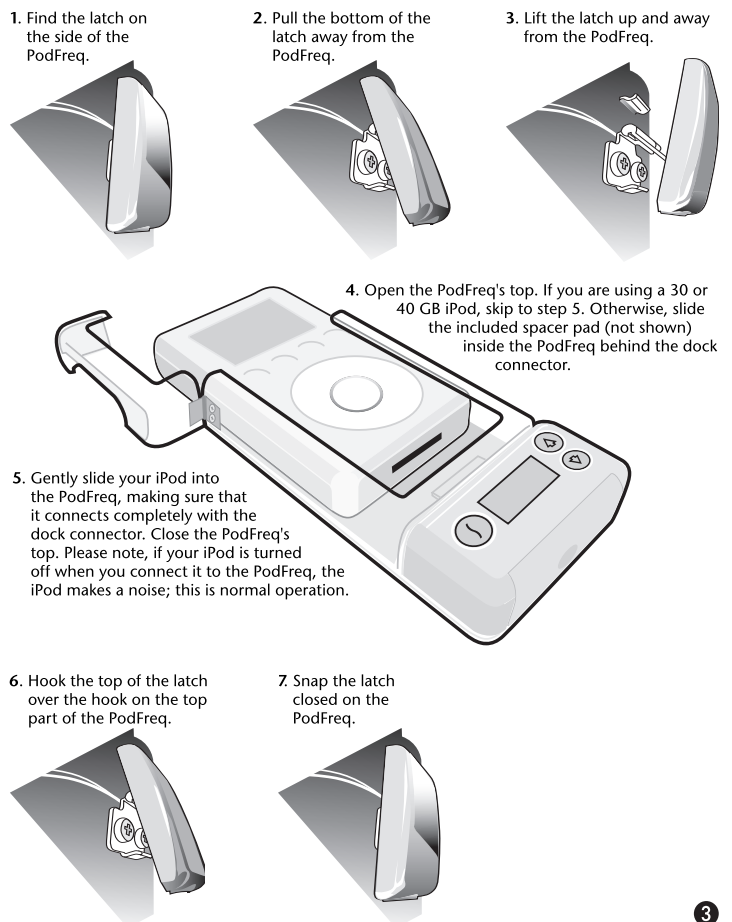
Technical Specifications	
Antenna	Telescoping, 8.6" (21.8 cm) when fully extended
Power Requirement	No batteries or power cables; powered by the iPod
Frequency Modulation	88.3 to 107.7 MHz
Tuning Type	Digital tuning, tunes in 0.1 MHz steps, last station recall
Stereo Separation	Greater than 40dB
Auto Level Control	Built-in to prevent sound distortion
Signal-to-Noise Ratio	Greater than 45dB (Stereo) 15 kHz LPF
Modulation Distortion	Less than 0.5%
Transmitter Range	10–35 feet (3–10.7 m), depending on FM receiver/antenna
Frequency Response	50 Hz to 15 kHz
Ports	6-Pin FireWire and mini-USB 2.0
Dimensions (WxHxD)	2.87" x 5.46" x 1.35" (7.3 x 13.9 x 3.4 cm)

Getting Started

This section describes the physical aspects of the PodFreq.



A—Insert Your iPod into the PodFreq



B—Find an “Empty” Station on the FM Band

Find a FM frequency between 88.3 and 107.7 on your radio's or tuner's FM band that has no radio station broadcasting on it, or when that's not possible, find the one with the weakest radio station broadcast.

C—Set Up the PodFreq to Broadcast

1. Pull up the antenna on the back of the PodFreq until it is fully extended.

2. Turn on the PodFreq; there are two ways to do this:

- *Press and hold the power button* until “Auto Off” appears on the display, followed by “1hr”, “2hr”, “3hr”, “4hr”, or “8hr”; release the button when you choose the number of hours you want the PodFreq to remain on. *The power button light will turn off when you release it.*



- *Press and release the power button*; the button will light up for approximately 10 seconds, and then turn off. Please note, the PodFreq operates independently of your iPod; when you turn on the PodFreq using this method, it will not turn off until you press the power button again.

3. Using the Up and Down tuning buttons, tune the PodFreq to the same frequency you chose on your radio. If the radio you are using has digital tuning, be sure to select the exact same number. Otherwise, the sound quality will be affected. For instance, the sound quality may be poor if you select 93.2 on the PodFreq when your radio is tuned to 93.3.



4

D—Play Your Music

Select your music as you would when you listen to your iPod through headphones, and press play; you should hear the music through the radio. Because the PodFreq uses the line level output signal from the iPod, its volume control will have no effect; adjust the volume on the radio.



Support Note: Unlike many other products, the iPod's line level output signal is affected by its EQ settings. You may want to experiment with various EQ settings to achieve the best sound quality, as some settings which increase bass may introduce distortion; Sonnet recommends that the iPod's EQ be set to Off.

E—Turn Off the PodFreq

When you turn on the PodFreq using the Auto Off timer, the PodFreq shuts itself off automatically. However, **when you turn on the PodFreq simply by pressing the Power button, you must turn it off manually.** Press the Power button to turn off the PodFreq manually.

F—Connect the PodFreq to Your Computer

When you connect a standard FireWire cable or mini-USB cable between your computer and iPod, the PodFreq acts as a dock substitute. You can sync your iPod with iTunes, transfer files between your computer and iPod—you can even operate your iPod when the PodFreq is connected to your computer.

5

Troubleshooting

Problem	What to Check
Power button's light is not lit	To save power, the Power button's light shuts off after you release it; this is normal operation.
Weak reception	<ul style="list-style-type: none">• <i>Antennas</i> - Verify the PodFreq's antenna is fully extended, and if you're using a portable radio, make sure its antenna is also fully extended.• <i>Distance</i> - Try moving the PodFreq closer to the radio. The effective transmitting range will decrease with distance; objects and walls between the PodFreq and the FM tuner will also affect reception.• <i>Radio station on the same frequency</i> - If there is a radio station broadcasting on the frequency you chose, reception will be affected; this is especially important to remember when you use the PodFreq in a moving vehicle.• <i>Strong adjacent radio station(s)</i> - The presence of a strong radio station on a frequency near the one you've chosen may cause interference; try selecting another frequency.
Distorted sound	<ul style="list-style-type: none">• <i>Different tuning frequencies</i> - Verify that the PodFreq's broadcast frequency is the same as the one you chose on the FM tuner. If you are using an analog tuner, try fine-tuning the dial to hear clearer sound.• <i>iPod EQ is on</i> - When any EQ setting other than Off is selected on the iPod, especially any that increase the bass, the sound from the iPod may be distorted. Unfortunately, this is normal, as the distortion may be heard through the headphones; <i>this is an iPod issue.</i> Choose the EQ Off setting for the best sound quality.

FCC Compliance

The PodFreq complies with Part 15 of the FCC Rules. Operation is subject to the following two conditions: This device may not cause harmful interference, AND this device must accept any interference received, including interference that may cause undesired operation.

Note: The changes or modifications not expressly approved by the party responsible for compliance could void the user's authority to operate the equipment.

6

Limited Warranty

Sonnet Technologies, Inc. warrants that this product shall be free from defects in materials and workmanship for a period of one year following the date of original purchase. For complete warranty information, go to www.podfreq.com.

Contacting Customer Service

The Sonnet web site located at www.sonnettech.com has the most current support information and technical updates.

Before you call Sonnet Customer Service, please check our web site for the latest updates and online support files, and check this user's guide for helpful information. When you call Sonnet Customer Service, have the following information available so our customer service staff can better assist you:

- Product name
- Date and place of purchase
- iPod model

If further assistance is needed, please contact us at:

Sonnet Customer Service:

Tel: 1-949-472-2772

(Monday–Friday, 7 a.m.–5 p.m. Pacific Time)

Fax: 1-949-457-6350

E-mail: support@sonnettech.com

Online Service Form: <http://serviceform.sonnettech.com>

Visit Our Web Site

For the most current product information and online support files, visit the Sonnet web site at www.sonnettech.com. Remember to register your product online at <http://registration.sonnettech.com> to be informed of future upgrades and product releases.

©2004 Sonnet Technologies, Inc. All rights reserved. Sonnet, the Sonnet logo, Simply Fast, the Simply Fast logo, PodFreq, and the PodFreq logo are trademarks of Sonnet Technologies, Inc. Macintosh, Mac, iPod, and iTunes are trademarks of Apple Computer, Inc., registered in the United States and other countries. Other product names are trademarks of their respective owners. Product specifications subject to change without notice. Printed in China. UG-FMT-IPOD-E-A-030904

7