



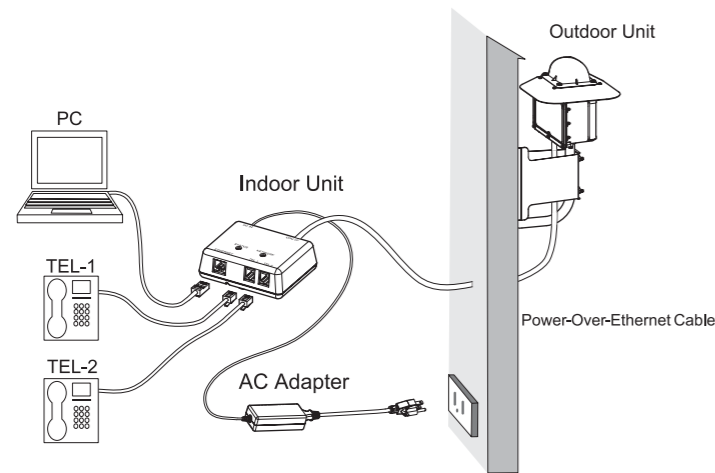
SOMApport Quick Setup

1 Get to know the SOMApport

The Outdoor SOMApport consists of two parts: an outdoor unit and an indoor unit.

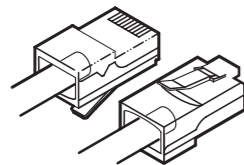
After installing the SOMApport, simply plug-in the indoor unit and connect it to your computer using the provided Ethernet cable. The SOMApport will automatically connect your service provider and you can setup your account using a Web browser.

If you are using your SOMApport to provide telephone service, you can connect ordinary telephones to it.



Cable

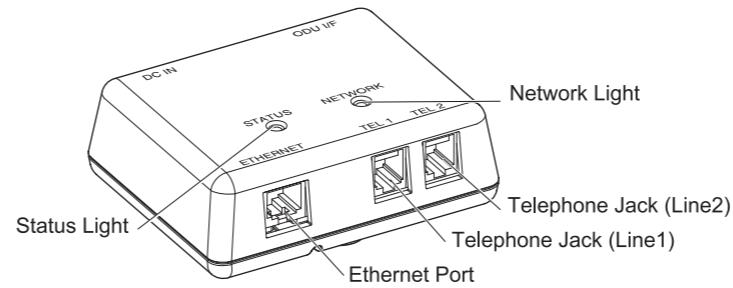
The Ethernet cable is supplied with the SOMApport. If your computer has an Ethernet port, use the Ethernet cable.



If your computer does not have an Ethernet port, you will need to purchase an Ethernet card or an Ethernet-to-USB adapter.

Top and side panels

Before beginning the installation, familiarize yourself with the top and side panels of the indoor unit.



Top panel lights

The lights on the top panel tell you when the SOMApport is ready.

Status Light

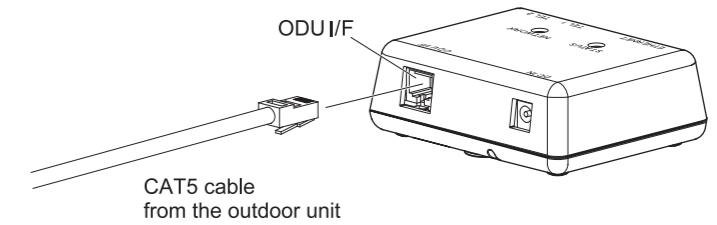
Off	The SOMApport is not receiving power.
Amber	The SOMApport is booting and running its internal diagnostics.
Flashing amber	The SOMApport is upgrading its software.
Green	The SOMApport is powered and operating normally.
Red	An error occurred. The SOMApport is not currently functional.

Network Light

Off	The SOMApport is not receiving power.
Amber	The SOMApport is attempting to locate a base station.
Flashing amber	The SOMApport cannot locate a base station.
Flashing green	The SOMApport has located a base station and is attempting to establish a connection.
Green	The SOMApport has located a base station and has established a connection.
Red	An error occurred. The SOMApport is not currently functional.

2 Prepare the SOMApport

Before plugging in the SOMApport, make sure that the CAT5 cable from the outdoor unit has been inserted to the ODU/IF port on the side of the indoor unit.

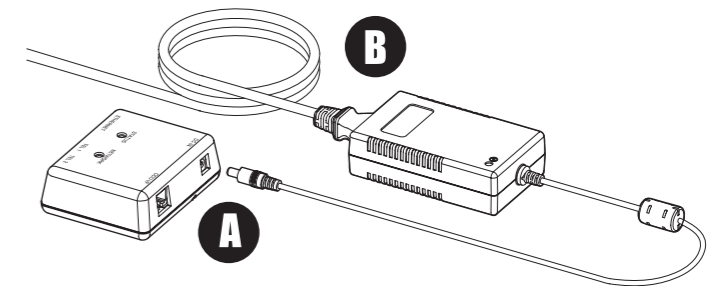


When setting up the SOMApport, follow these guidelines:

- Do not connect any third-party devices to the indoor unit, CAT5 cable, or outdoor unit.
- Do not use the outdoor unit indoors. It must be mounted on a permanent outdoor structure.

3 Plug in the SOMApport

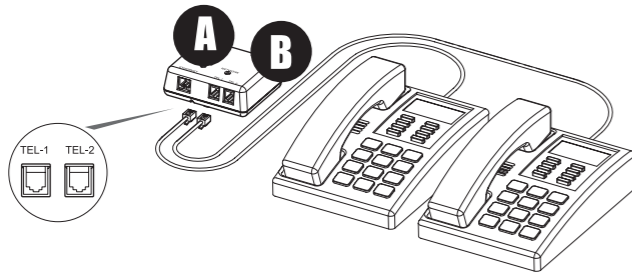
- Insert the connector of the power cord that is attached to the power supply into the power jack on the indoor unit. **A**
- Insert the socket end of the AC power cord into the power supply. **B**
- Position and orient the SOMApport in the location in which you plan on keeping it.
- Insert the plug end of the AC power cord into a power outlet.



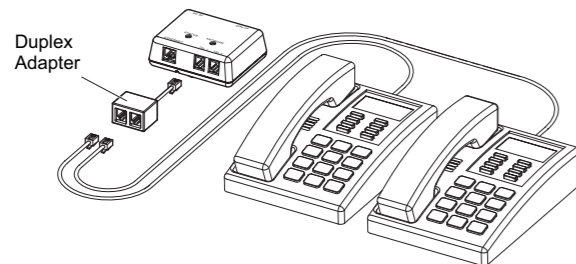
The SOMApport takes up to five minutes to start, connect to your service provider's network, and acquire a radio signal. The light on the power supply indicates whether or not it is receiving power. Wait until the Network light on the top of the SOMApport turns green before you begin connecting equipment to the SOMApport.

4 Connect your telephone

If your service provider does not offer telephone service, or if you are not connecting a telephone to the SOMAport, go to step 5 to connect your computer.



- 1 Insert the telephone cord into the left jack (TEL-1) on the side of the SOMAport. **A**
 - If your telephone service includes one telephone line only, you must use this jack.
 - If your telephone service includes two telephone lines, the telephone you connect to this jack will be serviced by TEL-1.
- 2 To connect a second telephone, do one of the following:
 - If your telephone service includes two telephone lines, insert the cord of the second telephone into the right jack (TEL-2). **B**
 - If your telephone service includes one telephone line only, you must use a duplex adapter.

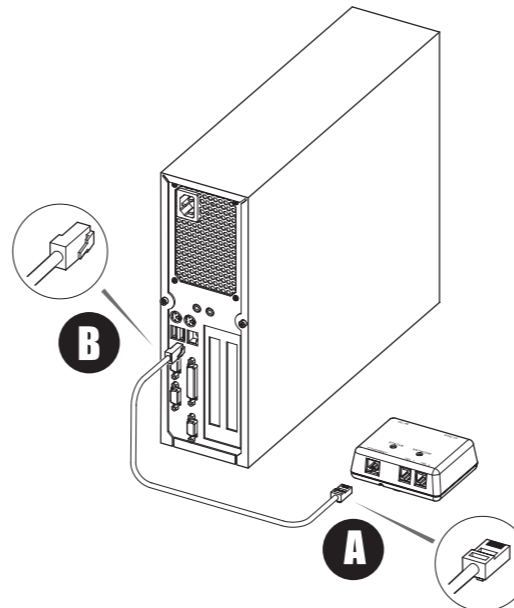


- 3 Pick up the handset and listen for a dial tone.
 - If you hear a series of tones (not a dial tone), the SOMAport is still booting. Hang up and try again when the status light turns green.
 - If you hear silence, make sure the cord is securely connected to the telephone and the SOMAport. See the SOMAport Setup Guide for troubleshooting information.

5 Connect your computer

Follow this step if you are using Ethernet. If you want to connect several computers to the SOMAport via a hub or router see the SOMAport User Guide.

- 1 Insert one end of the Ethernet cable into the Ethernet port on the SOMAport. **A**
- 2 Insert the other end into the Ethernet port on the computer. **B**



6 Activate full service

- 1 Restart your computer.
- 2 Launch a Web browser on the computer connected to the SOMAport.
- 3 Direct your browser to a known valid Internet address (such as www.google.com).
 - If the page opens, full service has already been activated and you can begin using your SOMAport for Internet service.
 - If you are redirected to your service provider's Web page, you must complete the sign-up procedure on the Web site to activate full service.
 - If you cannot open any Web pages at all:
 - Go to Step 7 "Run the connection wizard" if you used Ethernet to connect the computer to the SOMAport.

7 Run the connection wizard

For information about changing network settings on Mac OS, see the SOMAport User Guide.

If your version of Windows 95 does not have the Get on the Internet option or if you previously had a dial-up connection, you cannot use the wizard. See the SOMAport User Guide for information about manually changing network settings.

- 1 Start the Windows Internet Connection Wizard.

Version	Choose
Windows 95	Start→Programs→Accessories→Internet Tools→Get on the Internet
Windows 98/2000ME	Start→Programs→Accessories→Communications→Internet Connection Wizard
Windows XP	Start→Programs→Accessories→Communications→New Connection Wizard

- 2 Do the following to complete the Wizard.

Version	Choose
Windows 95/98/ME/2000	<ol style="list-style-type: none"> 1 Choose I want to set up my Internet connection manually, or I want to connect through a local area network (LAN). 2 Choose I connect through a local area network. 3 Leave all check boxes on the Local area network Internet configuration window blank. 4 Choose No when prompted to set up an Internet Mail Account. 5 Click Finish.
Windows XP	<ol style="list-style-type: none"> 1 Choose Connect to the Internet. 2 Choose Setup my connection manually. 3 Choose Connect using a broadband connection that is always on. 4 Click Finish.

- 3 Restart your computer.
- 4 Launch a Web browser on the computer connected to the SOMAport and direct the browser to a known valid Internet address (such as www.google.com)