

Satechi Aluminum Wireless KeyPad

User's Manual

ST-AWKP

About This Manual

This manual is designed to assist you in installing and using the Bluetooth Keypad. Information in this document has been carefully checked for accuracy; however, no guarantee is given to the correctness of the contents. The information in this document is subject to change without notice.

Edition

1st Edition,

Copyright

© Copyright 2015

This document contains proprietary information protected by copyright. All rights are reserved. No part of this manual may be reproduced by any mechanical, electronic or other means, in any form, without prior written permission of the manufacturer.

Trademarks

All trademarks and registered trademarks are the property of their respective owners.

FEDERAL COMMUNICATIONS COMMISSION STATEMENT

This Equipment has been tested and found to comply with the limits for a class B digital device, pursuant to Part 15 of the Federal Communications Commission (FCC) rules. These limits are designed to provide reasonable protection against harmful interference in a residential installation. This equipment generates, uses, and can radiate radio frequency energy and, if not installed and used in accordance with the instructions, may cause harmful interference to radio communications. However, there is no guarantee that interference will not occur in a particular installation. If this equipment does cause harmful interference to radio or television reception, which can be determined by turning the equipment off and on, the user is encouraged to try to correct the interference by one or more of the following measures:

- ◆ Reorient or relocate the receiving antenna.
- ◆ Increase the separation between the equipment and receiver.
- ◆ Connect the equipment into and outlet on a circuit different from that to which the receiver is connected.
- ◆ Consult the dealer or an experienced radio/TV technician for help.

This device complies with Part 15 of the FCC rules. Operation is subject to the following two conditions: (1) this device may not cause harmful interference, and (2) this device must accept any interference that may cause undesired operation.

Notice 1

You are cautioned that changes or modifications not expressly approved by the part responsible for compliance could void the user's authority to operate the equipment.

Notice 2

This equipment has been tested and found to comply with the limits for a Class B digital device, pursuant to part 15 of the FCC rules. These limits are designed to provide reasonable protection against harmful interference in a residential installation. This equipment generates, uses and can radiate radio frequency energy and, if not installed and used in accordance with the instructions, may cause harmful interference to radio communications.

Caution:

RISK OF EXPLOSION IF BATTERY IS REPLACED BY AN INCORRECT TYPE.

DISPOSE OF USED BATTERIES ACCORDING TO THE INSTRUCTIONS.

Introduction

Thank you for purchasing the **Bluetooth Keypad**. This User's Manual contains information that will help to operate the device as well as answering questions about certain special keys and buttons. Please keep this manual in a safe place for future reference.

System Requirements

- Hardware: Bluetooth-enabled computer (with either built-in Bluetooth capability or external Bluetooth dongle)
- Operating System: Windows XP/7/8/10 ; MAC OS X v10.4.6 or later.

Selecting Your Operating System

This keypad is designed to work with both Windows and Macintosh OS's. Please select OS at this point by sliding the OS switch located at the bottom of the keypad to PC or Mac mode.

Package Contents

- Bluetooth calculator keypad
- 2 x AAA batteries
- User's manual


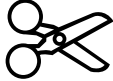


Power Switch

There is a power switch at back of the keypad. When not in use, please turn to OFF to save battery power.

Note:

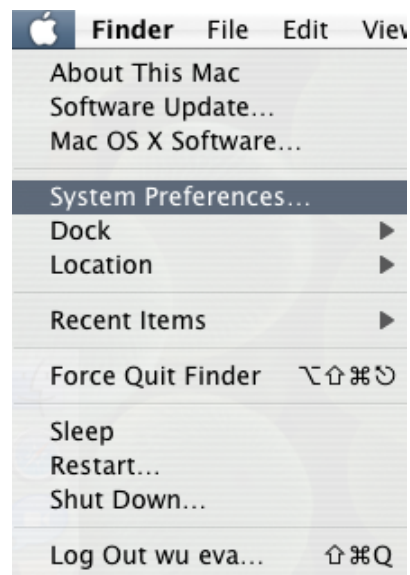
1. **After 30 minutes non-operation, the keypad will go to low-power mode. Please press any key to wake up and wait the blue LED turn off before using.**
2. **Power ON/OFF also need to press any key to reconnect and wait the blue LED turn off before using.**

Hot key function:

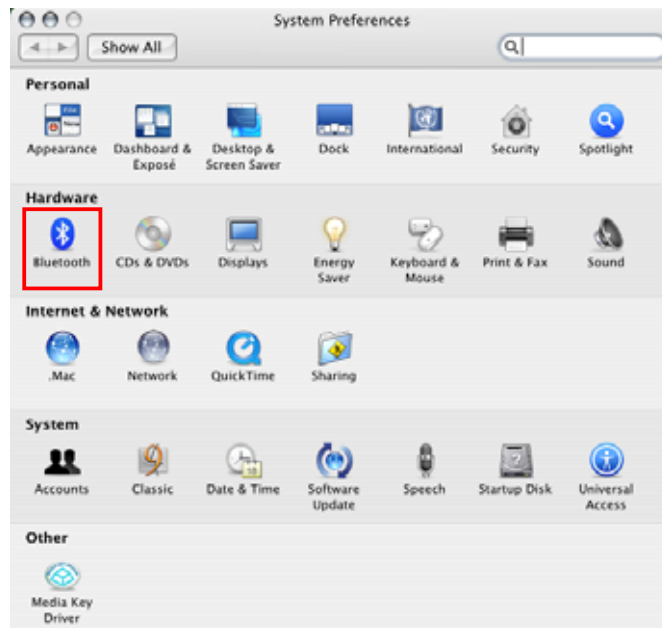
Function Name		Function Description
	Back	Back to previous state
	Cut	Cut the selected item.
	Copy	Copy the selected item.
	Paste	Paste previously cut or copied item.

Device pairing on MAC

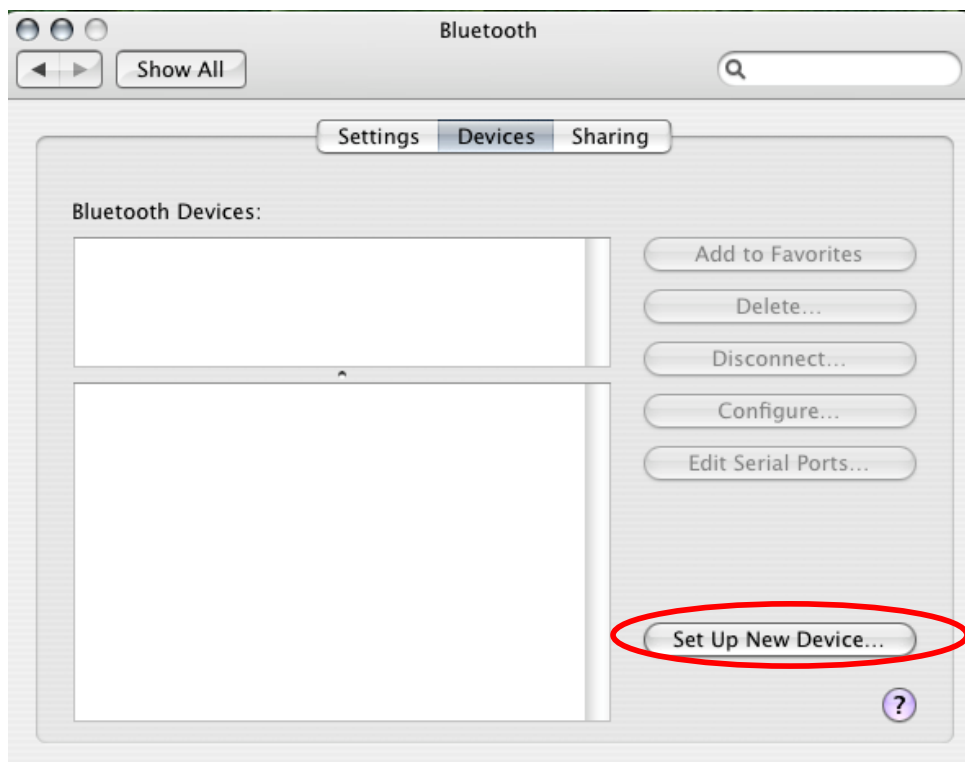
1. Click on the Apple icon and choose “System Preferences”



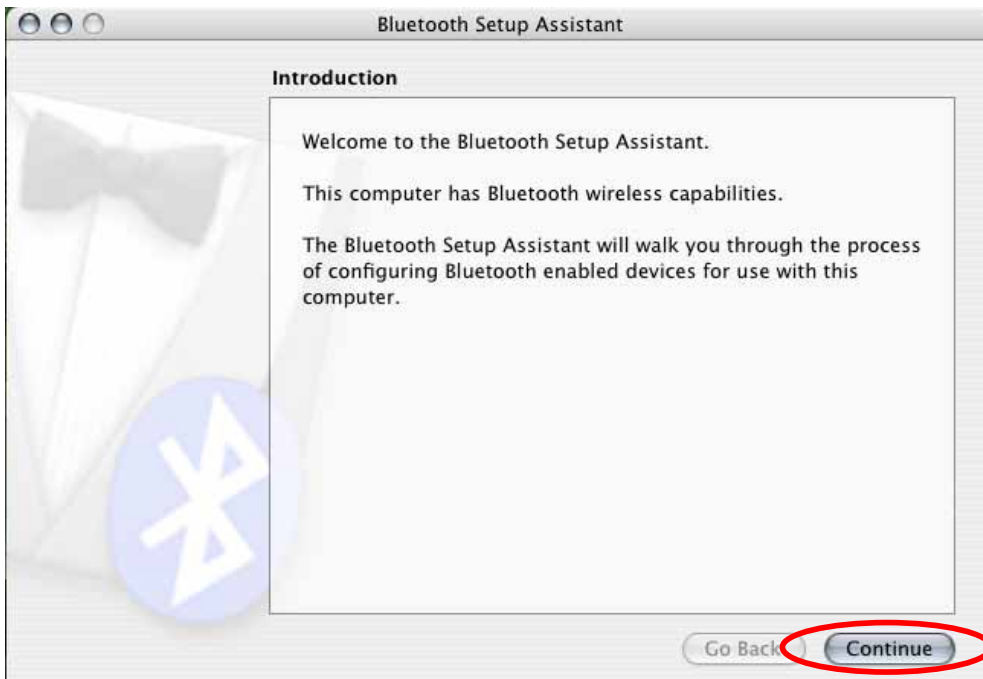
2. Click on the Bluetooth option.



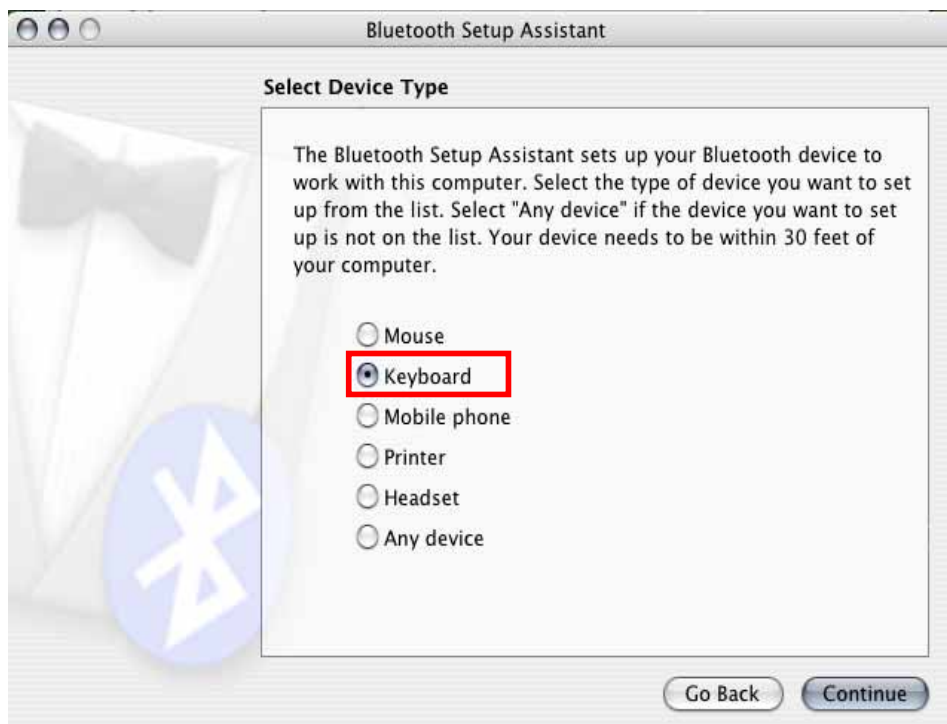
3. Click the "Set Up New Device" .



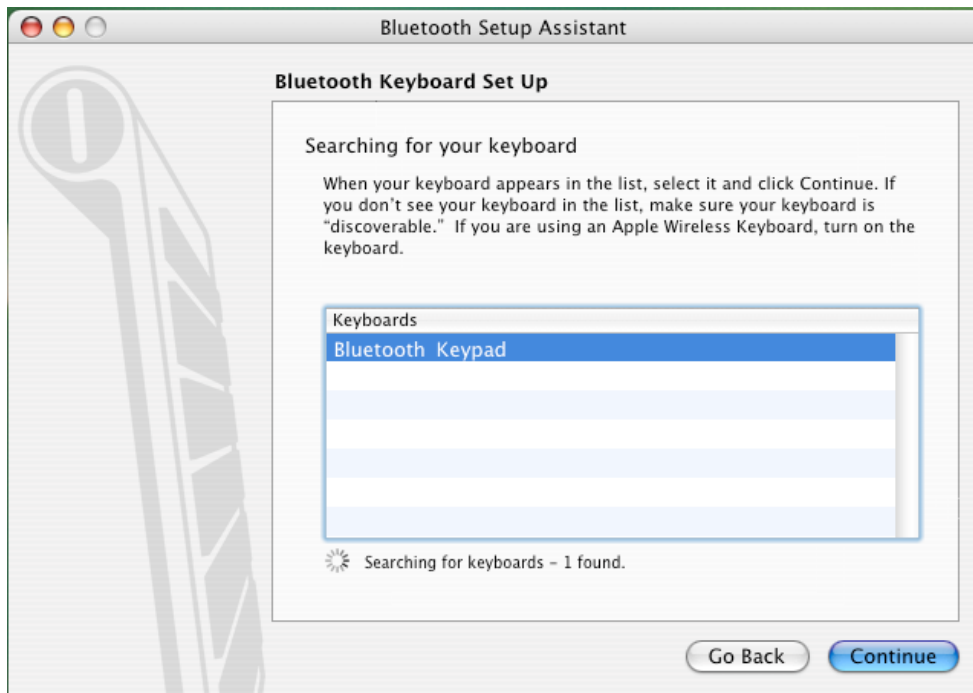
4. Click the “Continue” button.



5. Press the ‘Conn’ button at bottom of the Bluetooth keypad, then the led will start flashing. Choose “Keyboard” and click the “Continue” button.



6. Choose “Bluetooth Keypad” and click the “Continue” button.



7. Just follow the screen display to input the Passkey then press “enter” (the keypads enter)



8. Click the “Quit” button. The Bluetooth keypad is ready to use.



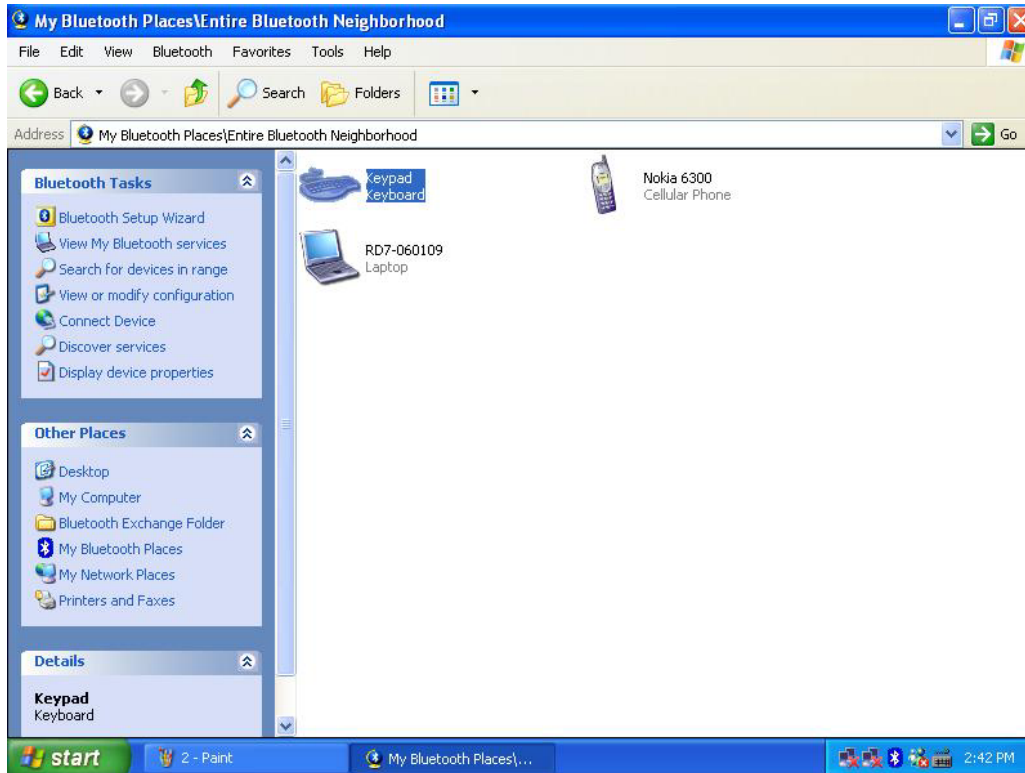
Device pairing

Widcomm software:

1. Right click on the BT icon and choose “Explore My Bluetooth Places”




2. Press the 'Conn' button at bottom of the Bluetooth keypad, then the led will start flashing.
3. Click the "Search for devices in range" option, the "keypad" will be found.



3. Double click on the "Keypad" icon, it will pop-up another windows. Just follow the screen display to input the Pin Code then press "enter" (the keypads enter).



4. The Found New Hardware Wizard appears and the OS will install the driver automatically. No other steps are necessary.
5. The Bluetooth icon will become to . The Bluetooth keypad is ready to use.

Toshiba software:

1. Right click on the BT icon and choose “Add New Connection”



2. Press the ‘Conn’ button at bottom of the Bluetooth keypad, then the led will start flashing.

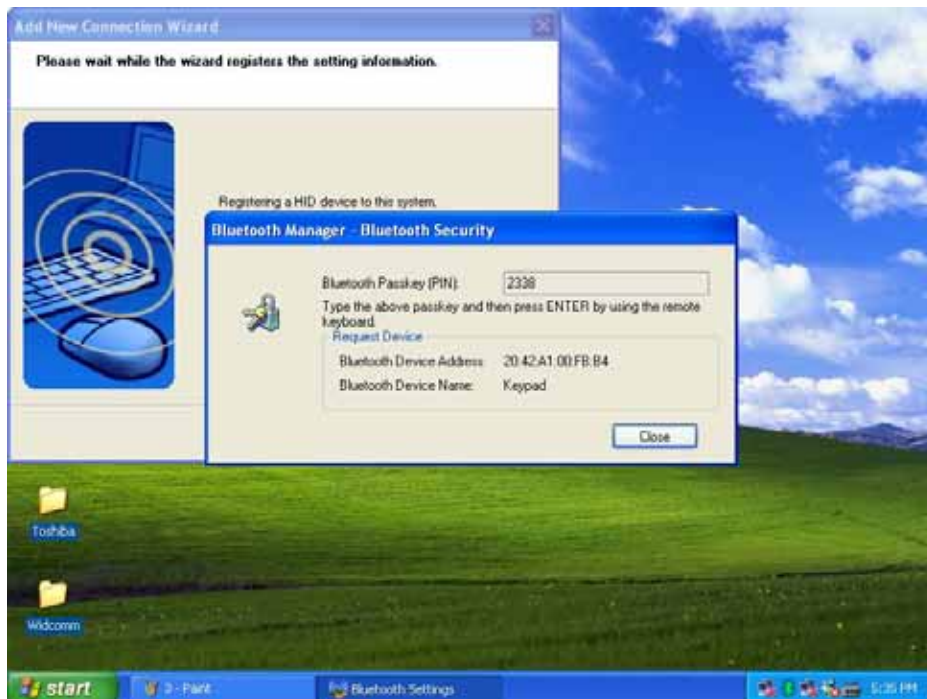
3. Click "Next"



4. Choose the "Keypad" device and click "Next"



5. Just follow the screen display to input the Pin Code then press “enter” (the keypads enter).



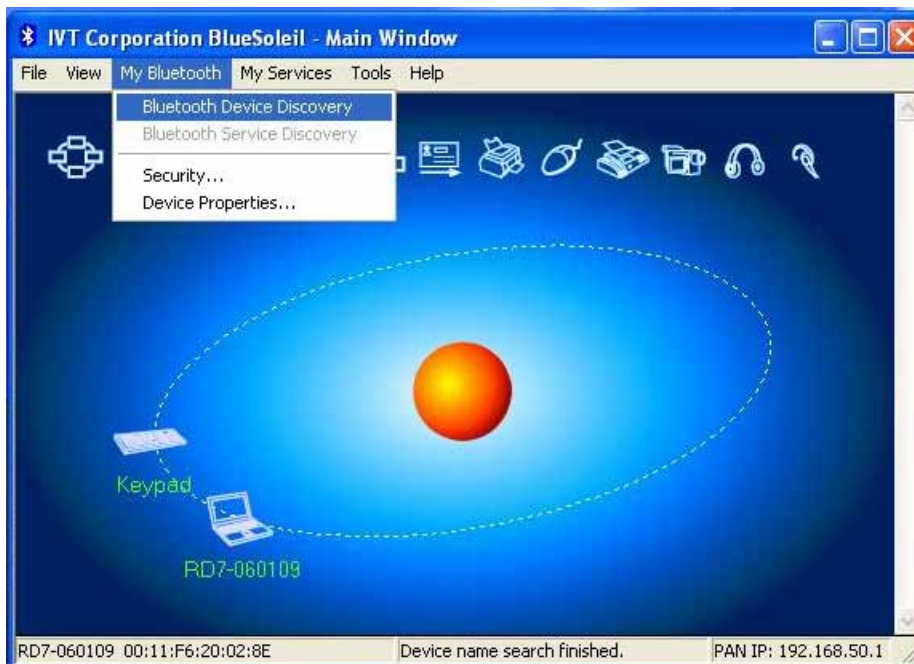
6. Click “Next”



7. The Found New Hardware Wizard appears and the OS will install the driver automatically. No other steps are necessary.
8. The Bluetooth icon will become to . The Bluetooth keypad is ready to use.

IVT Software:

1. Press the 'Conn' button at bottom of the Bluetooth keypad, then the led will start flashing.
2. Double click the BT icon on the system tray and it will pop-up a windows. Choose "My Bluetooth" " Bluetooth Device Discovery"




3. It will find the "Keypad" device. Right click on the keypad icon and choose ""Connect" " Bluetooth Human Interface Device Service"



4. Just follow the screen display to input the Passkey then press “enter” (the keypad enter).



5. The Found New Hardware Wizard appears and the OS will install the driver automatically. No other steps are necessary.
6. The Bluetooth icon will become to . The Bluetooth keypad is ready to use.

Troubleshooting

Make sure the battery is installed correctly

Check to see if the battery power is dead.