

USER GUIDE

Multimedia Player
abigs



Sarotech Co., Ltd.

www.sarotech.com

※ User Information

B Class Equipment(Equipment for home use) : This apparatus is for home use and has a radio wave acceptability registration, so it can be used in all areas.

- READ THE USER GUIDE CAREFULLY BEFORE INSTALL AND USE PROPERLY
- KEEP THE WARNINGS
- SINCE THE PICTURES IN THE USER GUIDE ARE DESCRIBED FOR EXPLANATION, THEY MAY NOT CORRESPOND WITH THE PRODUCT.
- THE SPECIFICATIONS AND INFORMATION REGARDING THE PRODUCTS IN THIS MANUAL ARE SUBJECT TO CHANGE WITHOUT NOTICE FOR FUTURE UPGRADE OF DEVICES.

IMPORTANT SAFETY PRECAUTIONS

PLEASE READ CAREFULLY BEFORE PROCEEDING

- ▷ Do not open the device or attempt to disassemble the internal parts or modify them in any way. It may cause the damage.
- ▷ Do not disassemble the device while powered on. It may cause electrical shock, fire or other hazards.
- ▷ Do not try to touch an electric plug with wet hands or use damaged power cord or frayed consent. Electrical shock or Fire may occur.
- ▷ Do not move while the equipment works. The damage on the hard-disk drive may occur. Power it off first before moving the device.
- ▷ If it is dropped or shocked, the product as well as its hard-disk drive may be damaged severely.
- ▷ Do not expose the device to excessive dust, places exposed to the direct sunlight, in damp or wet conditions containing liquids which might spill into any openings.
- ▷ Avoid place in the vicinity of a heat to prevent from the damage and place it in a well-ventilated place.

HANDLING CAUTION

Follow the instruction before use.

- ▷ Static electricity, misuse, bad product might cause the damage to your data. You should backup your own hard disk contents of your own accord before requesting the repair. SAROTECH CO., LTD. shall not be liable for any data or records lost due to repair.

- ▷ Before connecting the device to TV, turn off the power for all devices. Since DVP-570HD works with the multimedia player and external storage device, each function do not work simultaneously.

- ▷ When USB cable is plugged, the product works as the external storage device. Otherwise, it works as the multimedia player. Unplug the USB cable first and power it on to use it stable as the multimedia player after finishing the equipment as the external storage device.

- ▷ Radiate the heat from the product and disassemble when you exchange the hard disk. The heat from the hard disk may injure you.

- ▷ Do not place the hard-disk drive close to any magnetic materials such as speakers, magnet, etc to avoid the loss of data.

- ▷ The pictures and names in this user guide are instructed for DVP-570HD.

■■■ 1. PREFACE ■■■

DVP-570HD(hereinafter called abigs) is an enhanced multimedia player that provides a large number of chances for you to enjoy digital contents including movie, music, pictures and etc, connecting directly to external display devices such as home televisions, Automobile televisions or projectors without a complication in linking to PCs. Connecting to PCs, it also turns USB 2.0 enable external storage device.

■■■ 2. Features ■■■

- 1) abigs provides high-definition images with support of 1080i source files while multimedia files downloaded from PC can be played with the types of video interface(DVI, Composite, Components, S-video)
- 2) With the latest multimedia processor supporting DTS down mixing, DTS-type file can be played with the help of the external DTS decoder while supporting DTS Pass Through high-quality sound is provided through the external DTS decoders.
- 3) Support analog 2ch stereo, digital 5.1ch Coaxial/Optical, FM stereo transmitter, music can be played by an easy LCD or key setting without additional TV support.
- 4) With background music play service, music can be played watching the images and you can select songs in support of MP3 PlayList function.
- 5) e-Book service provides you to read e-book or electronic texts, at which you can enjoy the background music.
- 6) With Network(Fast Ethernet LAN) support you can play the multimedia files connecting to outside computers via LAN.
- 7) With an easy downloading the firmware, the latest functions are provided.
- 8) You can use and check easily the device through LCD screen.
- 9) Support both USB 1.1/2.0 interfaces and Plug & Plug installing automatically to PCs, the device can be used as an external storage device. With USB2.0, the max. speed is up to 480Mbps.
- 10) With the USB2.0 host function, DVP-570HD is connectable to USB products like the external memory.
- 11) Remote controller designed for easy-use has 48 keys with LED lighting on while work.
- 12) Functions such as Timer Setting Supports automatic Turn-off , LCD screen rotation and picture preview are also provided.

■ ■ ■ 3. Box Contents ■ ■ ■

- DVP-570HD
 - Remote control(batteries included)
 - Composite cable(Composite Video/Stereo sound)
 - Component cable(Video signal)
 - AC power cord
 - USB cable
 - Installation CD
 - User guide
 - Bolt
 - Stand
 - LAN cable
- ▷ Additional car accessories : External remote control receiver, Car DC adapter, slim remote control, stereo cable

4. specification

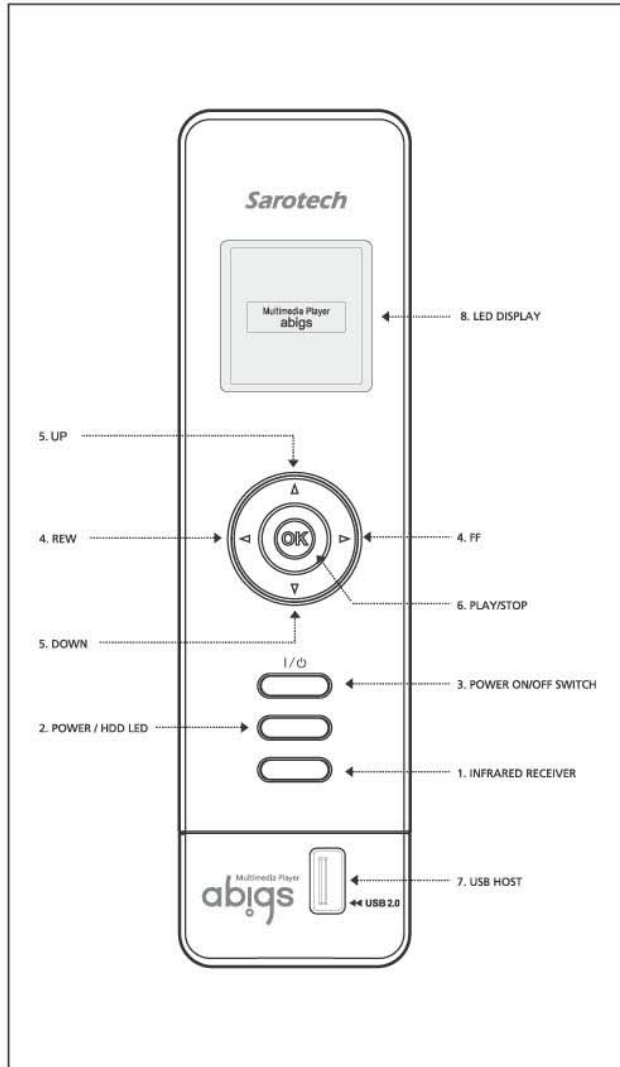
REQUIREMENTS	CODEC		MPEG1/2/4, DivX, XVID, WMV9
	FILE	FORMAT	avi, dat, mpg, vob, mp4, asf, tp, iso,ifo
		SUBTITLE	smi, smil, sub, srt
		MUSIC	aac, wav, ac3, mp3, m3u(Play List)
		IMAGE	JPG, BMP
		e-book	txt
Main chipset	EM8621(Sigma designs)		
LCD	Function indication such as Menu Screen, File Name, Play etc. (resolution: 128X128)		
Video output	Composite, S-Video HD Component(max:1920 X 1080i) DVI(Digital Video Interface)		
Audio Output	Analog 2 Ch, DTS down mixing Digital 5.1 Ch Optical & Coaxial support(DTS pass though)		
FM Transmitt Output	Frequency : 81,1MHz~88,5MHz~88,9MHz(400KHz, 3 channel) Transmission mode : Simplex		
HDD Type	3,5" IDE HDD (option)		
File Format System	FAT32, NTFS		
Interface	USB 2.0 HOST 1 Port USB 2.0 Device(max. 480Mbps) LAN(10/100Mbps) support		
Program memory	16MB		
OS	Windows 98/98SE/ME/2000/XP Mac OS 9.0 or higher		
Input Power	AC	95~240V a.c	
	DC	DC +5V/2A, DC +12/1.5A(designated adapter)	
Dimention	144,2(L) x 55(W) x 206,6(H) mm		
Weight	0,85kg(without HDD)		
Material	Aluminum		



Specification may be subject to change upon installed drives.

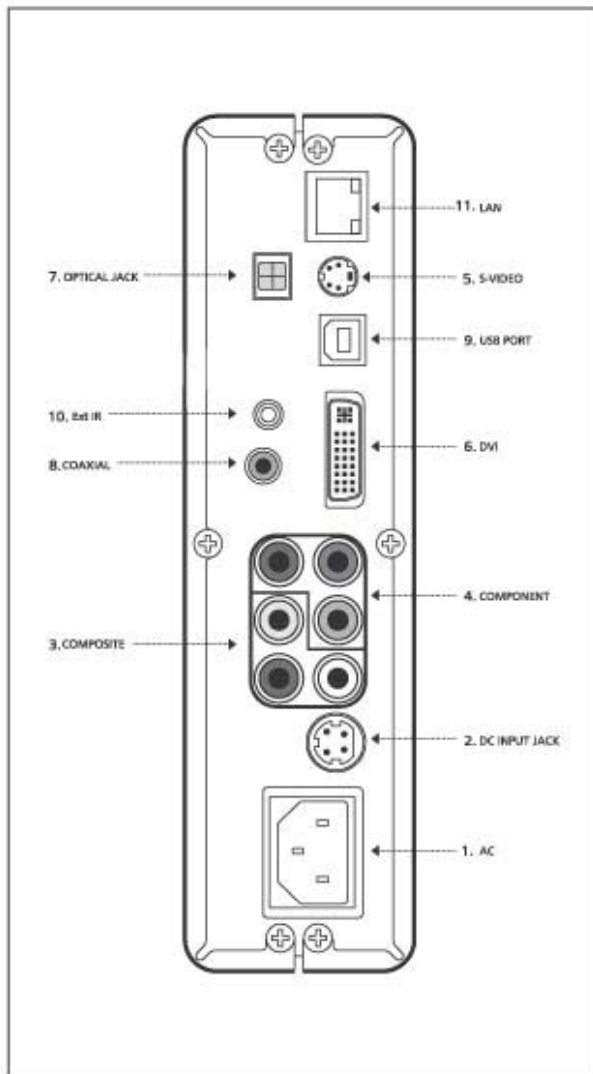
5. Names and Functions

5.1 Front



1. IR Sensor: Used to receive the signals from remote control.
2. Power LED/HDD LED : When "I/O" button is pressured, power comes in and the left lamp is turned on. The right lamp is on when HDD works.
3. I/O : Power ON/OFF button.
4. FF/REW : Fast Forward/Rewind Playback, Menu Selection buttons
5. UP/DOWN : Subtitle position, Menu selection button
6. OK : Playback/Menu Selection Button. Once pressured, it plays back. Pressured again it goes to menu screen.
7. USB Host : USB Host port
8. LCD Screen : it shows main Screen, Explorer Screen, Playback status.

5.2 Back



1. AC Power supply : AC cord link for power input



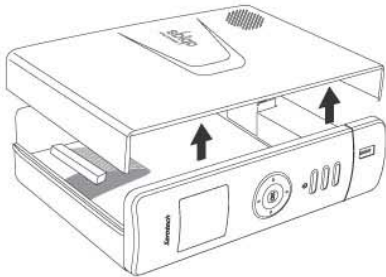
In case that remote control keys do not function during playback or system lingers at glitch, press "Power" key in remote control or "I/O" button in front or unplug the power and reconnect again, if the problem continues, contact our Customer Service.

2. Charger for Car: It is used for the power supply inside car(optional)
3. Composite port :Composite(CVBS) Video signal and Stereo Audio signal output
4. Component port : Components(Y/Pb/Pr) Video Signal of HD TV appears
5. S-VIDEO : Video signal displays S-VIDEO signal

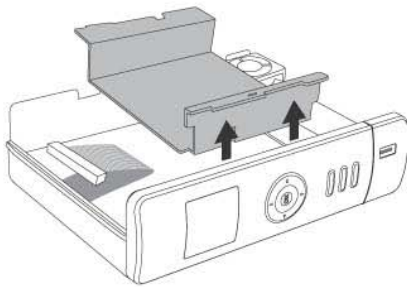
6. DVI : Video signal displays through Digital Video Interface
7. OPTICAL : digital 5,1ch audio signal displays through OPTICAL mode
8. Coaxial : digital 5,1ch audio signal displays through Coaxial mode
9. USB port : connect to PC
10. External IR : connect to external IR(optional)
11. LAN : LAN port

■■■ HDD Installation ■■■

1. Disassemble the upper case.



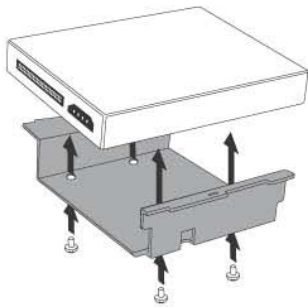
2. Remove the HDD fixture.



3. Set HDD with the fixture and fix up with 4 bolts at bottom upward.

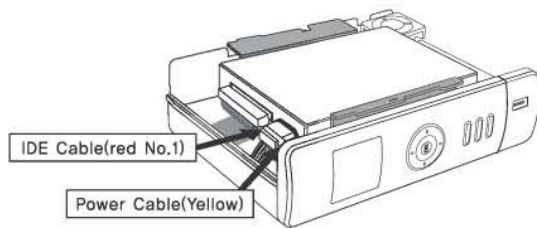


Assemble the bolts following the direction described below.

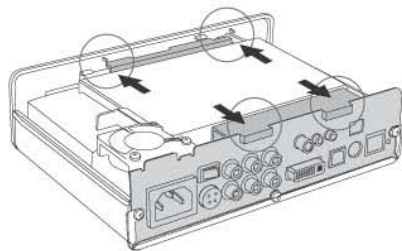


4. Connect IDE cable and POWER cable to HDD.

It is important to make sure that No.40 ribbon cable red color is connected to the pin No.1.



5. Insert in HDD assembled with the fixture.



6. Close the upper case and lock it with 3 bolts.

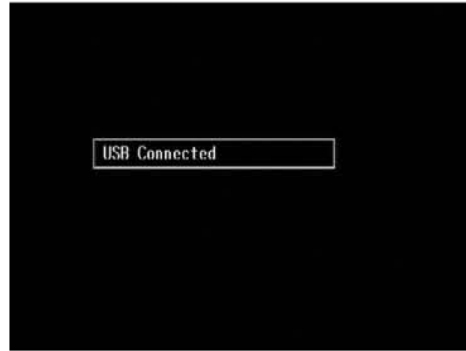


6. PC Connection

This chapter will show how to connect abigs to the external storage device. You can play back or edit the contents in abigs connecting to PC. The following pictures show when abigs connect and unconnected to PC.



[abigs initial screen]



[connecting to PC]

After connecting USB cable to abigs while it is powered off press “I/O” button on abigs or “power” button in remote controller to start the external storage device in about 3 seconds(depends upon the equipment condition). This does not show on the external TV. The program begins after unplugging the USB cable.

When you watch movies to connect abigs on TV, the USB cable is connected and then “USB connected” shows on the TV screen and then the system is start to the external storage device. Unplugging the USB cable, abigs keeps powered-on and abigs menu shows on the screen. To use abigs for the external storage device and multimedia player, power it off first and then connect the cable.



1. USB 2.0-enabled devices to the USB 1.1 Host Adapter, it still operate at USB 1.1 speed(12Mbps).
2. USB 2.0 device will operate at max. 480Mbps only upon PC with USB 2.0 Host Adapter.
3. Turn it on by pressing “I/O” button or “POWER” key in remote controller.
4. We recommend 6 GB capacity or higher of 3.5” HDD
5. Intel Pentium PC (above) or USB port enable MAC PC.

6.1 Windows ME/2000/XP

The driver will be installed automatically on Windows O/S.

■ How to connect

1. Connect the AC power cord to AC INLET at back and plug on the power.
2. Connect the USB cable from PC to USB port.
3. Turn it on by pressing "I/O" button or "POWER" key in remote control.
4. The message "USB Connected" shows on the abigs LCD screen.
5. A new drive is created automatically in [My computer] of PC so that files and folders can be created, readable and deleted.

■ How to disconnect

Click the USB Connection Icon () by the left mouse button and select menu.



Under a normal circumstance the message that allows you to disconnect shows on and you may disconnect abigs from PC.

6.2 Windows 98/98SE

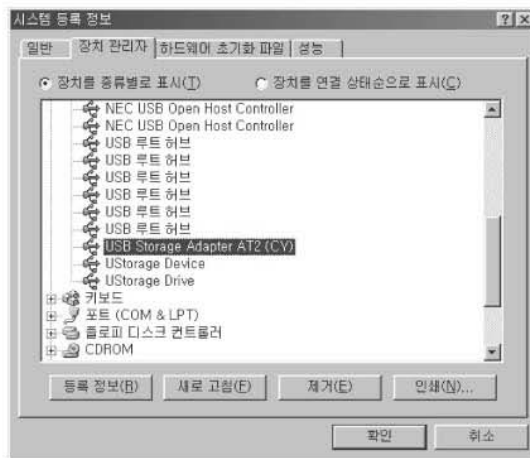
The installation driver is required for Windows 98/98SE

■ Installation of driver

Connect the AC power cord to power and press "I/O" button.

The add new hardware wizard will appear when abigs is connected to PC. Click on "Next" and requested driver files, click "install from disk" and select "/USB Driver/Windows98/..." folder from CD. The proper USB Driver will be set up automatically.

Finish by clicking "complete".



"USB Storage Adapter AT2(CY)" device will be shown on "My computer/Control Panel/System" when the setup is done normally.



1. Automatic installation may not continue if HDD in abigs is changed. In this case, FDISK and FORMAT are required. Refer to "/MANUAL/FDISK&FORMAT/tdisk&format.pdf" from installation CD or <http://www.abigs.co.kr>
2. HDD partition 4EA support 4 partitions are supported. First partition will be "hd0", second partition will be "hd1" if there are 4 partitions. "hd0" will be the root folder upon one partition.

■ Connection and Disconnection

Procedures are similar with the description above for Windows ME/2000/XP



If unplugging the USB cable at file transferring work such as downloading or uploading, files may be damaged or system may operate inappropriately.

6.3 Mac OS

MAC driver files are in "/USB Driver/MAC/..." folder from installation CD.

– for MAC OS 9,X

"mac_os_9_mass_storage_driver_v3_3_18.hqx"

– As MAC OS X version, you can use use MAC as follow:

mac_os_x_mass_storage_driver_v1_4_1_18.hqx

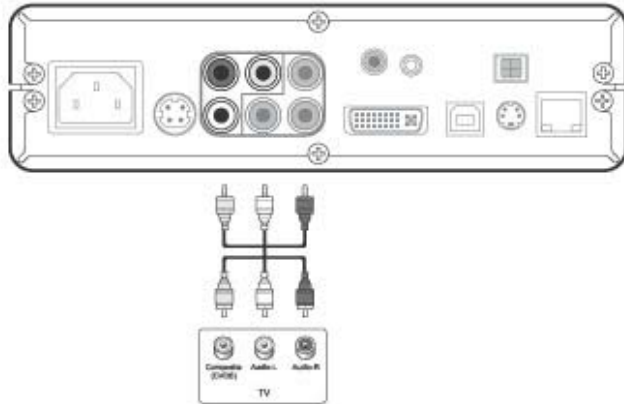
7. Connecting Video/Audio devices

※ Available only when purchasing additional cable except composite cable and component cable.

7.1 Using composite video and stereo audio

Connect the AV cable to TV composite terminals for video as described in the following picture.

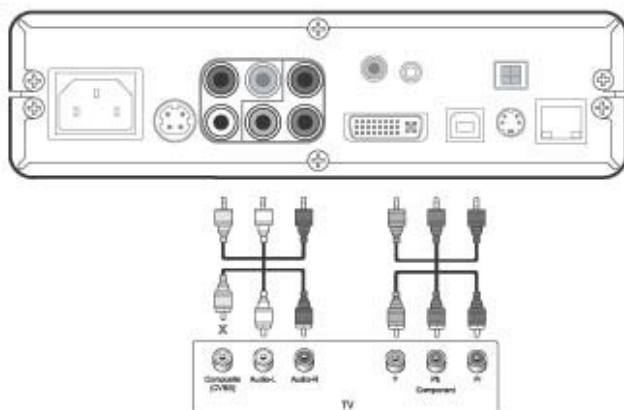
- 1) Connect the AC power cord to the power.
- 2) Connect the AV cable to TV like the picture.
- 3) Turn on TV and switch setting to "External input" using remote control.
- 4) Press on "I/O" button at abigs front or "POWER" button at remote control.



7.2 How to use Component Video and Stereo Audio

When you watch movies through HD TV, connect the component cable to the TV. Connect only stereo audio plugs(white and red) of AV cable to TV.

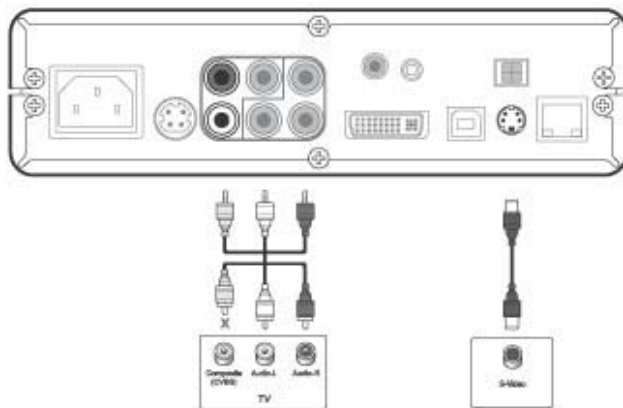
- 1) Plug the AC power cord to power.
- 2) Plug the component cable to TV.
- 3) Turn on TV and switch setting to "Component" using remote control.
- 4) Press on "I/O" button at abigs front or "POWER" button at remote control.
- 5) Set abigs TV mode to HDTV. Press "TV Out" button of remote controller slowly until the screen is shown.



7.3 How to use S-Video image and Stereo Audio

When you watch movies connecting S-Video terminal, connect the S-Video cable to the TV. Connect only stereo audio plugs(white and red) of AV cable to TV.

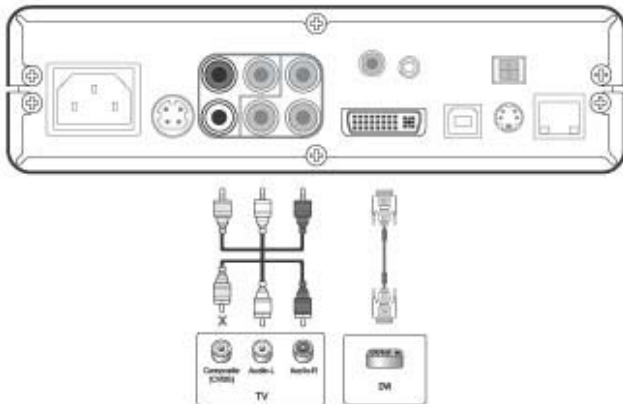
- 1) Plug the AC power cord to power.
- 2) Plug the S-Video cable to TV.
- 3) Turn on TV and switch setting to "S-Video" mode using remote control. Press "TV Out" button of remote control slowly until the screen is shown.
- 4) Press on "I/O" button at abigs front or "POWER" button at remote control.



7.4 How to use DVI image and Stereo audio

When you watch movie through DVI interface, connect the DVI cable to both abigs and DVI terminal of external video device. Connect only stereo audio plugs(white and red) of AV cable to it.

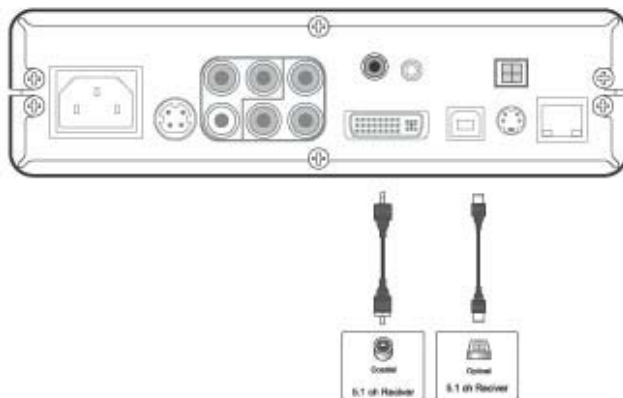
- 1) Plug the AC power cord to power.
- 2) Plug the DVI cable to DVI terminal of external video device.
- 3) Set the external video device to DVI input.
- 4) As press on "I/O" button or "POWER" button on remote control. You can set up DVI on TV mode. "TV Out" button of remote control slowly until the screen is shown.



7.5 How to use 5.1ch Audio device

abigs supports DTS Down mixing to play stereo sound compressed through 5.1channel and connecting to abigs 5.1 channel to audio device supporting , Optical/Coaxial port such as amp or receiver guarantees high-quality sound.

- 1) Plug the AC power cord to power.
- 2) Plug the Video cable(Composite, Component, S-Video, DVI) to TV.
- 3) Connect Coaxial cable both to Coaxial terminal and 5.1ch Receiver or connect Optical cable both to Optical terminal and 5.1ch Receiver
- 4) Turn on TV and switch TV input into status connected image.
- 5) Press on "I/O" button at abigs front or "POWER" button at remote controller.
- 6) Press "TV Out" button of remote control slowly until the screen is shown.

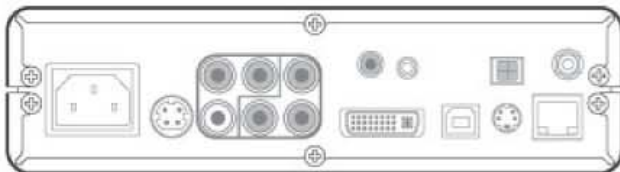


7.6 How to use FM Stereo Audio Device

Follow the below instruction to watch movies to connect TV and listen to audio through radio.

The frequencies on transmitting FM are 88.1/88.5/88.9MHz.

- 1) Connect the Video cable(Composite, Component, S-Video, DVI) to TV.
- 2) Connect the AC power cord to power.
- 3) Turn on TV and change TV input screen setting.
- 4) Press on "I/O" button at abigs front or "POWER" button at remote controller.
- 5) Set abigs audio output at approximately medium level and change radio volume(control abigs audio output if there is an audio distortion)



7.7 How to connect Car TV (arm-supporting type or in-dash type)

- 1) The cable that TV manufacturer provided is required to connect to Car TV
- 2) When AV terminal is found outside car TV, follow the below instruction.
Otherwise if there is not AV terminal, ask Audio Service Center.
- 3) Make sure that car TV without AV terminal can not be connected to some original part.
We recommend to ask car manufacturer in advance.
- 4) Car TV, composite cable provided by car TV manufacturer, abigs, composite cable, car stereo cable and adapter for car use are required.

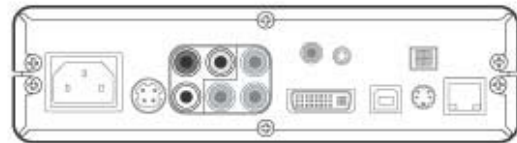
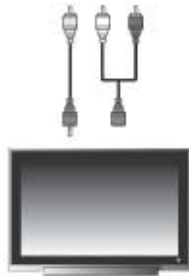
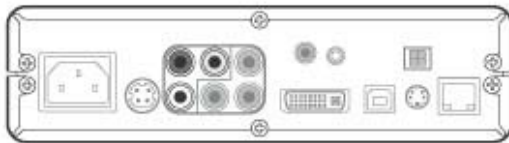
Connect the composite cable that TV manufacturer provided to Car TV and abigs AV terminal. If the cable does not match abigs, replace it with composite cable and use

option adapter jack to connect car stereo cable for car option pack in accordance with colors.

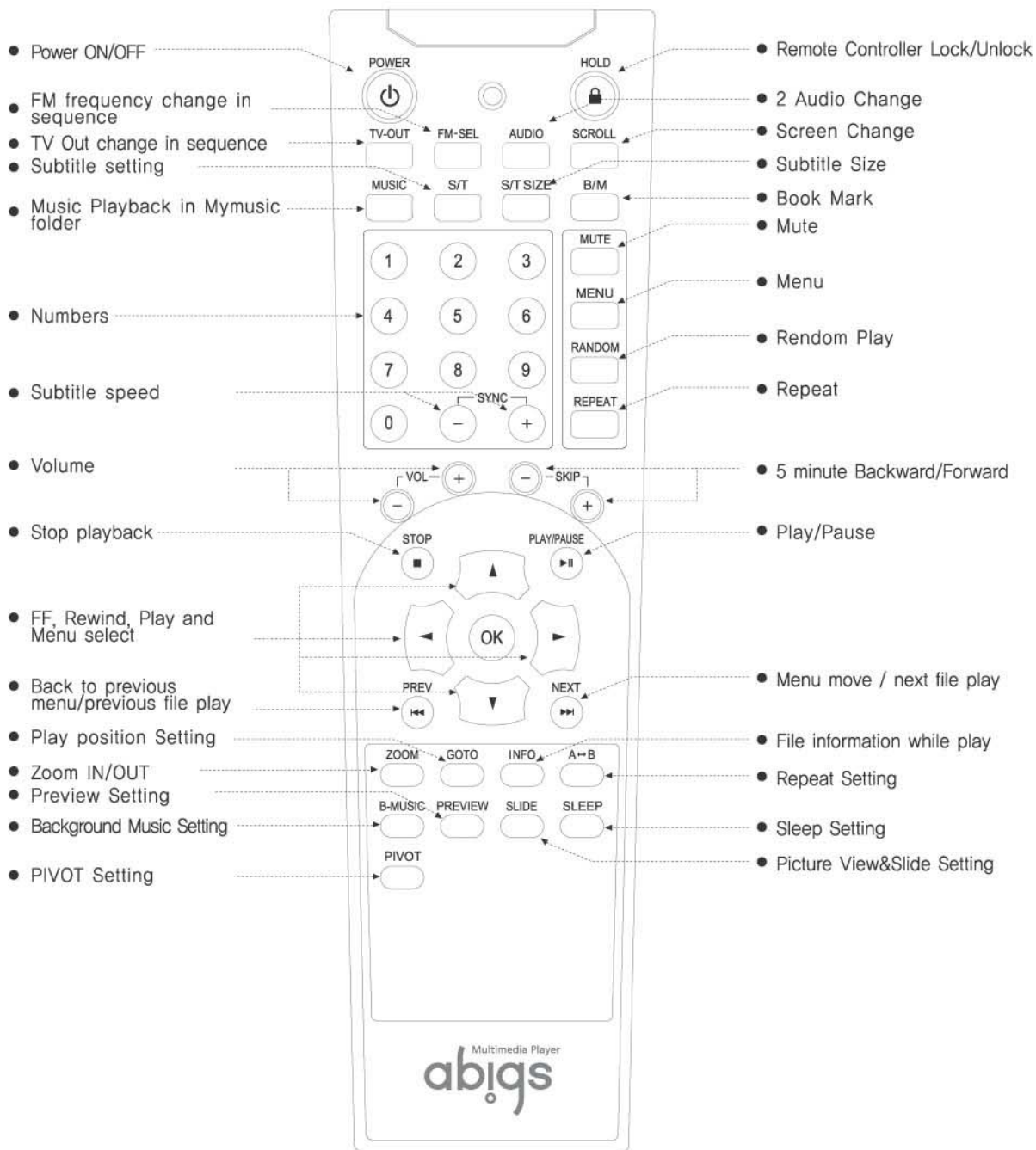


- 1) Connect car stereo cable to car pack or speaker.
- 2) Supply the power connecting car adapter to abigs.
- 3) Press on "I/O" button at abigs front or "POWER" button at remote control.
- 4) Having watched movies through HD TV earlier at home, press "TV Out" button of remote control slowly until the screen is shown.

In case "HDD Mount Fail" message is shown but it operates normally at PC, it may be caused that partition format is not "main partition". Referring to the notice from our website (www.abigs.co.kr) back up the data and configure the partition as "main partition"



8. Remote Controller



9. Movie/Music/Photo/e-Book



Default language is set "English". Upon the different firmware version, some functions and operation may not be same.

9.1 Understanding abigs

MENU

With abigs powered on, the initial screen is as below.



[Initial Screen]



[Menu]

Menu "Movie, Music, Photo, e-book, whole View, Play list, Setup and Media" on the left indicates the functions of abigs.

The information on the right shows abigs HDD, connected device information or peripherals.

Speaker symbol on the left bottom indicates abigs audio volume Detailed information about user's connecting HDD or peripherals information including time or capacity shows on the right bottom.

With Setting of preview, the preview screen is shown on the right of the initial screen.

By selecting "PREVIEW" button, you can control preview or (picture and e-book)

■ Play back file

Choose one item among movie, music, picture and e-book on the left menu by “▲,▼” key of abigs or remote control. All folders of connected devices are shown while selected files are shown on screen upon the selected item. When you choose whole view, then all files are listed.

Using “▶” key, you can move to right menu.

Selecting “▲,▼” key, choose file to play.

With “PLAY/PAUSE” or “OK” key (movie, music, picture and e-book) and pressing “menu” on remote control, item to set play menu is shown.

■ Using menu while play

Selecting “MENU” button and “◀,▶” key, menu that you can alter is shown.

With “▲,▼” key choose item to set and pressing “OK” and then, you can be specified item(the font color is changed)

By choosing “◀,▶” key, input the number to alter and pressing “OK” key allows you to apply the change.(item font color turns back).

When you select “MENU” key once more, you can exit menu screen.

■ Using functions while file playback

1) Press “STOP” key to finish the file while playing. By pressing “STOP” key, you can exit folder and menu in sequence you moved.

2) Pause,

Selecting “PLAY/PAUSE” Key pauses movie/music at play.

3) Play Previous/Next file

Selecting “PREV, NEXT” Key allows to play Previous/Next file finishing the current file. The page moves while e-book running.

4) A-B repeat

While movie/music playing, with pressing “A-B” key the message “A-B repeat begins” appears to start A-B repeat setting with an additional message “A-B repeat continues” until you select “A-B” key again to finish.

5) Repeat play

While movie/music playing, with pressing “REPEAT” key the file at play keeps playing repeatedly until you press “REPEAT” key again.

6) Move the items page by page at file view

By pressing “NEXT” key you go to the next page from the current file item while pressing “PREV” key, you go back to the previous page.

9.2 Movie Play

The following picture shows how to select movie file to play.

With “▲,▼” key you select the file to play and then press “PLAY/PAUSE” or “OK” key to begins the file. You also play it by selecting “MENU” button from menu screen.



■ Menu description while playing

The following picture shows how to use menu while movie playing.

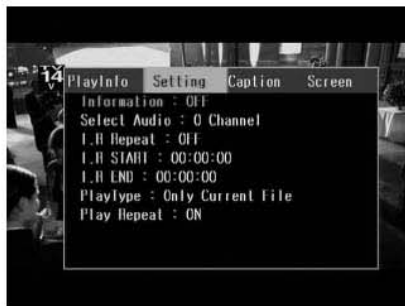
By pressing “MENU” key while playing, you can control the setting for your own purpose.



– Play information

This shows the information about the running file including file name, size, resolution, and running time etc.

There may be sometimes no information for the files without file information.



– Play Setting

You can control functions like audio, A-B repeat, or play mode as well as running information dialog.



– Subtile

You modify position, size, color of subtitle.



– Screen

Brightness, Color and contrast will be modified.

■ Useful Functions

1) BOOKMARK

This is benefit to record the running position. When you need to turn off the abigs or to watch the movie you want to keep watching again

◆Book mark: Press “B/M” key at the position you want to mark while running. Only the latest bookmark is saved.

◆Playback: power on the abigs, exit at menu screen, and press “B/M” button. The file bookmarked before will be run automatically. Make sure that only normal power-off guarantees the latest bookmarked file. The position of running time can be also saved for movie file. Music file the position will not be recorded.

2) Screen position setting

The function works to move the position of the whole screen. Once selecting “SCROLL” key you can relocate it by using “◀,▶,▲,▼” key.

3) +Skip, –Skip

You can skip 5 minute forward or backward to move the running movie file.

4) FF/RW Speed Play

By selecting “◀,▶” key increasing the speed 8x, 16x, 32x, FF/RW Speed Play is possible. If you want to go back to normal play, press “PLAY/PAUSE” key or “OK” key. Audio while speed play does not work.

5) Screen move

By selecting “GOTO” key, GOTO screen is shown. Using “◀,▶” key you move as much as you want to move and insert the target time with number keys, press “OK” key and then you move the screen as long as time is set.

6) Playing Status

pressing “INFO” key, menu running information is shown on the screen and when you press the key again, it fade out.

7) 2 Audio setting at AVI file

When AVI file with 2(two) audio plays, audio change by press the "Audio" key.

8) Subtitle setting

Using "S/T" button, the subtitle can be shown or disappeared.

9) Subtitle size setting

Using "S/T Size" key, you can change the size of subtitle.

10) Screen pan/scan

When you press "ZOOM" key once, screen zooms in 20% and the screen will be larger up to 300%. Choose "◀,▶,▲,▼" key, zoomed-in screen is moved.

11) Play back ISO file

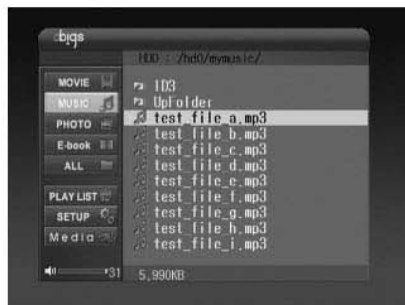
ISO files of type of DVD format can playback by selecting file with extension "iso" from [Movie/File View] menu. It can be only played to ISO files DVD. If different types of data are changed into ISO format, they will not be played.

9.3 Music Play

The following picture shows how to select music file.

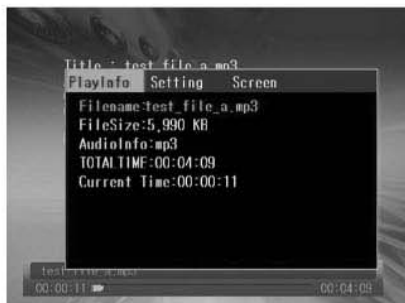
Choosing "▲,▼" key select file and press "PLAY/PAUSE" or "OK" key to play.

You also can play it by selecting "MENU" button from menu screen..



■ Menu description while playing

The following picture show how to use menu on music file playing. Once pressing "MENU" key while music file is running, you can use useful settings.



– Play information

This shows the information about the running audio file, which indicates the file name, file size, audio information and running time etc. Some files may contain no information.



– Play setting

You can modify the information ON/OFF, Play mode, A–B repeat, repeat play.



– Screen

The pictures can be modified slide mode while music playing.



It must be the following folder in abigs HDD “..Wsaro_sysWslide”..and then the photos can slide in “SLIDE” folder.

The list files are created automatically in FAT32 but in NTFS connect to create manually.

■ Useful functions for music

1) MP3 ID3Tag information

Singer, Album, Title and Genre will be informed. Once pressing “INFO” key while mp3 running, it will be shown. While file searching, it is not supported.

2) MP3, WMA, Play information

Bitrate, Sampling frequency, Total playing time will be informed while music playing. “INFO” key shows the information on mp3 playing.

3) REPEAT, RANDOM key

if you press “REPEAT” key While movie or music running, the current file play repeatedly. If you press “RANDOM” key while music is play, the files at the same folder play randomly.

4) Play Music without TV

Turn on abigs or press the “Power” on remote control. With LCD screen on abigs, you can play the music files in a folder. If “Mymusic” folder has music files in the root folder in Hard disk, you can also play all the files by “MUSIC” key of the remote control.

5) Background Music Setting

Press “B–MUSIC” key to set and deselect the background music.

9.4 Photo View

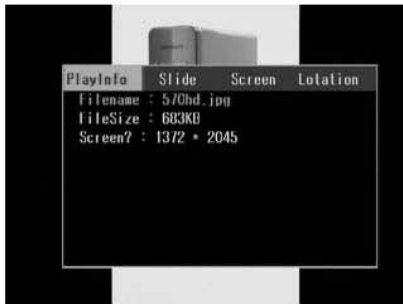
The following picture shows how to select picture to view.

Press “▲,▼” key to select and choose “PLAY/PAUSE” or “OK” key . It also viewed by selecting “MENU” button and menu screen.



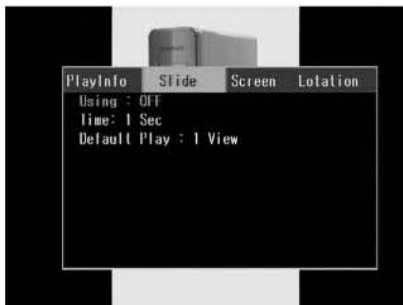
■ Menu Description on running

The following picture shows how to utilize menu while picture file running. Press “MENU” key to modify the setting while picture viewing.



– Viewing information

The file name, file size, resolution information will be informed.



– Slide

You can modify the slide setting including sliding time, number of slide pictures so that you can even view 4 pictures at the same screen.



– Screen

You modify screen size, brightness, color and contrast.



– Rotation

It supports 90°/180° rotation and rotation status.

■ Useful Functions for picture view

1) Preview before run picture file



From [Photo] menu to [Photo] folder, as press “PREVIEW” key, you can see the photo in advance before file playback.

2) Picture Rotation

After played photo file, press “◀, ▶” key and then, rotate 90° to the left or right like pictures.



3) SLIDE Set on/off shortcut key

By push down “SLIDE” key on viewing the picture, simply set on/off the slide function.

9.5 e-book

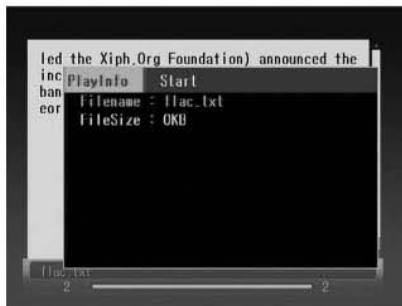
The following picture shows that you select e-book file. In [e-Book] menu, using “▲, ▼” key to select document file and press “PLAY/PAUSE” or “OK” key. It also playback by “MENU” button and selecting menu. You can check the content in advance in accordance with “PREVIEW” key service.



 Only txt files are valid.

■ Menu Description

The following picture shows how to utilize menu while e-Book service running. Press “MENU” key to modify settings while e-book content running.



– Playback information
The running file information is shown.



– Start
You can set the automatic scrolling service of the content.

9.6 Play List

When you choose [Menu/Play List], the following picture will be shown. Play list can be modified in abigs internal memory and HDD.

- Movie Playlist : Movie list
- Music Playlist : Music list
- Flash Playlist : Internal memory play list



Flash Playlist indicates a play list created in the internal memory that each movie play list and music play list are provided. Max. 100 files can be registered to each lists created in the internal memory.

There must be the following folders in abigs HDD “/saro_sys/...” to use play list through HDD:

- Playlist : Movie Play List folder
- Playlist2 : Music Play List folder



The list files are created automatically in FAT32 but in NTFS connect PC to create manually.

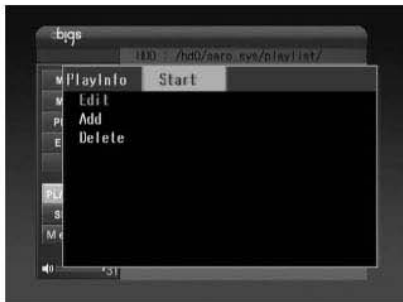


With FAT32, abigs can Addition, Edition and Deletion of play list in HDD itself. But with NTFS file system, when abigs is connected to PC, addition, Edition and Deletion of play list is possible. NTFS is not subjected them by themselves.

■ Play List Add, Edit, Delete



From [Play List] item moved to [Movie Playlist] folder, press “OK” and then you go to Playlist. Putting down the cursor on Selecting Playlist000.m3u File, Press “MENU” key. When “Play info” and “Start” on menu, please move to “Start” menu.

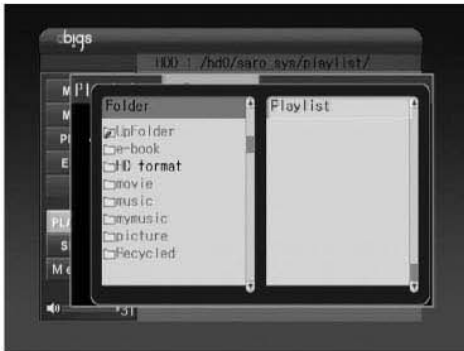


When you press “Add” button, it will be added Playlist file.

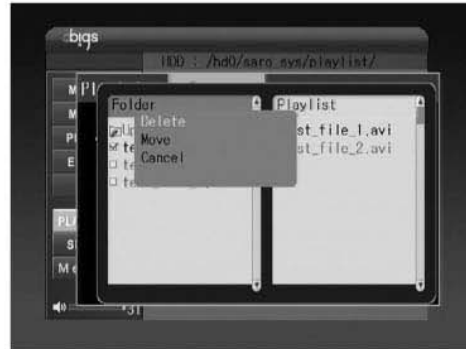
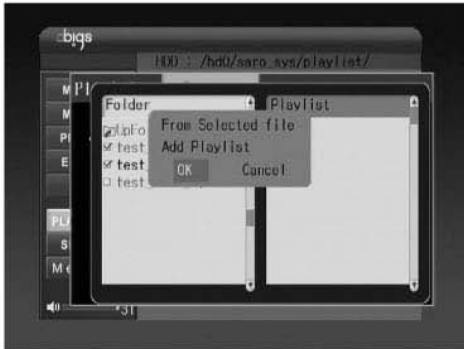
With Press “Delete” button, will erases the selected Playlist file.



This functions are valid on in FAT32. You should be editing in PC after connected to PC in NTFS system.



When you select “Edit” from “Start”, “Folder list” and “Play list” screen are shown. Choosing the files from “Folder” press “OK” key and then, Choose “NEXT” key.



Select “OK”key, and then the selected files in “Play list” are moved it. Press “STOP” button and then completes editing.

If you want to delete the files from “Play list”, after you selected the files and then press “PREV” button, You can select “Delete/Move/Play/Cancel”.

- Delete : Delete the selected file list
- Move : Change the playing order of files
- Cancel : Cancel the function

Functions of Music Playlist and Plash Playlist are same with Movie Playlist.

■ Playback

Select a playlist and press “OK” or “PLAY/PAUSE” button.

9.7 Useful functions

1) SLEEP mode

When you select “sleep” key, the message “Turn-off in 30 minute, Turn-off in 1 hour, Turn-off in 1 hour and 30 minute and Turn-off in 2 hours” will be shown. abigs powers off automatically at the set time as you choose.

2) PIVOT

The function rotate the abigs LCD direction, which by selecting “PIVOT”key, the direction of LCD screen will be altered.

3) FM Frequency Modification

You can simply change FM frequency through remote control “FM-SEL” key.