

4) Mute

Sound can be muted by "MUTE" button.

5) Background Music

With "B-MUSIC" button you can view pictures or read e-book while music playing.

6) Lock Remote Controller

Using "HOLD" button, you lock and unlock the remote controller.

7) With "ZOOM" key to playback Movie and Photo files, you can enjoy them as the screen zoom to max. in 300% and the enlarged screen can move.

## 10. System Setting

Using "▲,▼" keys from the initial screen, go to "Setup" menu.

With "▶" key, move to menu that you want to set.

By selecting "▲,▼" key, go to the item to alter.

Press "OK" key, alter the setting with "◀,▶" key and press "OK" key.

Using "◀" key, you can exit to the left menu.

### 10.1 MOVIE Setting

The following menu is how to alter video setup.



A normal video content is not shown on the screen if the settings are not correct. To correct this problem press slowly "T/O(TV OUT)" key to switch automatically TV mode, several times until the normal screen comes back.

#### ■ TV Mode

Users select TV mode such as NTSC, PAL, HDTV, and D-SUB for external display device.



#### ■ Video Out

Users select the abigs Video Output such as C/S-Video/YpbPrP, DVI, YPrPb to connect to external display device.(depend upon TV mode).

#### ■ Resolution

abigs Video output resolution will be selected from 480i, 480p, 576i, 576p, 720p to 1080i.(depend upon TV mode)

## 10.2 MUSIC Setting

The following menu is how to set audio.



### ■ Audio Output

One between analog 2ch(Stereo) and digital 5.1ch can be selected.

### ■ FM transmission

This is a setting to listen to audio through FM radio. Select "OK" button and change the frequency by using "◀,▶" buttons. Choose one of 3 channels to transmit FM frequency.

## 10.3 Network Setting

The following menu is the configuration of network..



### ■ 1. Dynamic IP

A Network devices supporting DHCP protocol provide dynamic IP address.

### ■ 2. Static IP

A static IP address assigned can be input by using direction keys or number keys for IP address configured network.

## 10.4 System configuration

The next menu is how to change the system configuration.



### ■ Initialization

This is to initialize back to the original version of system setting.

### ■ Language

User language can be selected.



The default language is set to "English".  
Change the language that you want.

## ■ Firmware update

This item is to update the latest firmware.

“New firmware version” indicates the file version in “saro\_sys/update/..” folder.

“Current firmware version” shows currently running abigs firmware version.

\* How to upgrade firmware

There are 2 ways to upgrade abigs firmware: One way is to upgrade product firmware as following:

- 1) Connect abigs to PC
- 2) Create “/saro\_sys/update” folder in abigs HDD
- 3) Download “abigs.bin” file from abigs homepage and save it to “/update” folder
- 4) Please Power off after abigs is separated from PC.
- 5) Connect abigs to TV and turn it on

Using “▲,▼” keys move to “Setup/System setting/Firmware update”, select “OK” key and “Firmware upgrading” will be shown. With “◀, ▶” keys, move to “Selection” and press “OK” key to upgrade firmware.

If you want to cancel upgrading firmware, press “OK” key from “Cancel” position.



NEVER power off the system while upgrading firmware. Severe damage may occur on the system. Upgrade is required when “New firmware” is latest version than “current firmware version”.

Otherwise, there is second way to upgrade by copying the update file to specific area.

- 1) Connect abigs to PC
- 2) Create “/saro\_sys” folder to abigs HDD
- 3) Downloading “ertour” file from abigs homepage save it to “saro\_sys” folder
- 4) Remove abigs from PC and turn it OFF
- 5) Connecting abigs to TV, power it on again

And then the firmware will be revised.



“ertour” file must be saved in “/saro\_sys/..” folder. Otherwise, the firmware saved in the memory will operate.

## ■ LCD backlight

ON/OFF and time setting of LCD backlight at abigs front can be configured.

# 11. Media configuration

HDD in abigs will be configured automatically. 3 devices like 'abigs HDD', 'USB Host', and 'Network' can be connected to media.

## 11.1 abigs HDD configuration

Choose abigs HDD at Media item again when altering back into abigs HDD after operation connection to other media.

Using "▲,▼" keys, move to "Media" menu in the initial screen.

"▶" key selecting leads to "abigs HDD" and HDD icon begins to move.

With "◀, ▶" keys, you can move to media that you want and if you select "OK" key "Succeed!" message will be shown. You can exit by pressing "◀" key to menu.

## 11.2 USB Media Device connecting to abigs

Connecting USB device to abigs allows files to play back(some USB devices may not connect). The following picture shows how to connect USB devices to abigs.



Connect the external USB Media Device to USB port at abigs front and go to the "media" menu by selecting "▲,▼" keys in the initial menu.

"▶" key allows to move USB and USB icon begins to move. "Succeed!" screen is shown by pressing "OK" key.

"◀" key allows to exit back to left menu and select where you want to go

## 11.3 How to connect media device to abigs via network

Network linking to abigs allows files to play back.

The following picture shows how to connect abigs via network.



Make sure that abigs network is setup properly at [setup]menu and LAN is connected to abigs, as well as the sharing on target computer to connect is sharing configured.

Go to [media] menu by push down “▲,▼” keys in the initial menu.

“▶” key selecting allows you to move to NETWORK before NETWORK icon begins to move.

By pressing “OK” key, a screen will be shown to insert in “IP address”. Type in the IP address of destination with the remote controller and press “OK” key to show “Succeed!” screen.

“◀” key allows you to exit to left menu and now you are free to move.

\* An inappropriate sharing configuration may cause disconnection to the target computer via network.

\* LAN connection sharing configuration on Windows XP



Click the right button on the folder to share as described in the above picture. Select “Sharing and Security(H).”



Check “Share this folder” and type in “Share Name”.

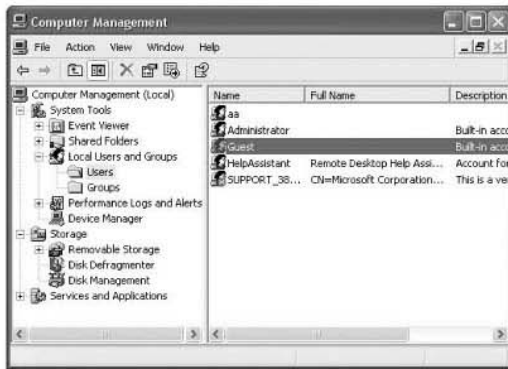
Share Name must be “abigs”.

Add on permission to Everyone.

This procedure is not necessary if configuration is already done.

Make sure that Everyone would be added at security tab. If not, you must add it

Once a folder is shared, the folder symbol changes: the hand holding the folder will be shown.



Select [Control Panel/Administrative tools/Computer Management/Local Users and Groups] and double-click the Guest.



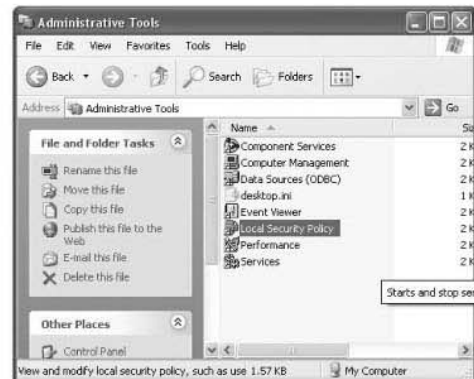
Only Windows XP professional users is required permission setting while XP home users are not.



When you do not find “Administrative Tools” from Control Panel, click “Switch to Classic View” located in the left, top. Check “User cannot change password” and “Password never expires” and let the rest of item remain.

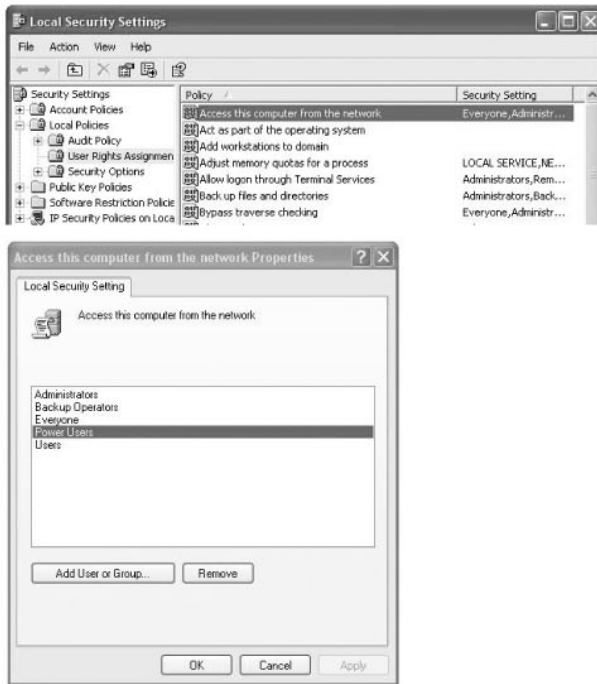
Red “X” mark at the Guest must diappear.

Add Guest account to [Access this computer from the network] following step to [Control panel /Administrative Tools/Local Security Policy/Local Policies/User Rights Assignment].



Please remove Guest in Local Security Policy after executed “access deny this computer in network”

Select "Access this computer from the network" and "Properties" by clicking the right button or double-clicking.

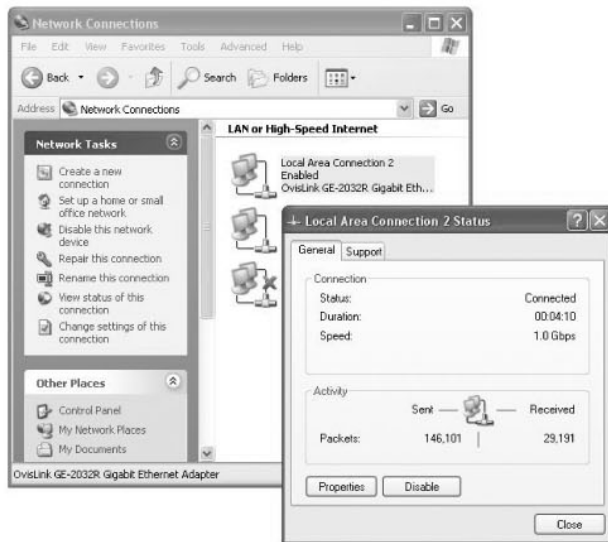


Click "Add User or Group", and  
Write "Guest" in the object name to choose and click "Check Names".



\* IP router Connecting

TCP/IP setting is not necessary under circumstance at which IP address is automatically provided from router or DHCP server with the setting that “Obtain an IP address automatically” is already checked.



Following step to [Control Panel/Network Connection], select [Status(U)] at [Local Area Connection] by right button clicking.



You can check the provided IP address by clicking “Support” tab. Input the same IP address when you connect network from [media] menu later .(e.g. :192.168.1.127)

Move to [Control Panel/Network Connection] and select [Properties] by right-button clicking. Make sure that Internet connection Firewall option is NOT checked from [Advanced] tab.

If the Service Pack 2 is installed, click “setting” in Windows Firewall, select “Do not use” and click “Yes” to complete the setting in PC side.



Move to [Control Panel/Network Connection] and select [Properties] by right-button clicking. Make sure that Internet connection Firewall option is NOT checked from [Advanced] tab. If the Service Pack 2 is installed, click “setting” in Windows Firewall, select “Do not use” and click “Yes” to complete the setting in PC side.

## >>> CUSTOMER REGISTRATION <<<

We appreciate your choice of our product. We pleasingly launch the Online Customer Registration Service for technical support.

- Registration : visit "<http://www.sarotech.com>" or "<http://www.abigs.co.kr>", click Membership Registration Button on the right of upper homepage and fill out the online customer registration card.
- You are registered a member by submitting your E-mail address and your name and you will be provided further information about the new products, events, technical supports and guarantees from our side.

# WARRANTY

This warranty card should be fully completed for the guarantee service valid from the date of purchase.

Product Serial No			Model No.	
			Date of the purchase	
Customer name		Tel	Address	
Place of purchase		Tel	Address	

- SAROTECH Co., Ltd. provides one year on-site warranty for the product commencing from the date of purchase. In case that it is impossible to identify the date of the purchase, the 3 months-passby date since its manufacture will be regarded the beginning date of free warranty service.

## ■ Limitation of Warranty

1. The warranty service is offered to the computer which has defect caused under normal use within one year, in the judgement of SAROTECH Co., Ltd.

- The warranty is null and void and service fee will be charged under the following circumstances;
  1. if the product has been damaged through abuse or misuse;
  2. if any unauthorized repair or modification has been carried out on the unit
  3. if the product has been dropped after installation;
  4. if the product has been damaged through fault voltage supply or wrongfully connected to other devices;
  5. if the product has been damaged through natural calamities(fire, wetting)
  6. if the warranty due is expired.

# WARRANTY

- For troubleshooting, contact SAROTECH Co., Ltd. Customer support center or the original place of purchase.

- CERTIFICATION

- NAME OF CERTIFICATION : SAROTECH CO., LTD.
- PRODUCT NAME : MULTIMEDIA PLAYER
- MODEL : DVP-570HD
- DATE : . . . .
- MANUFACTURER : SAROTECH CO., LTD.
- COUNTRY OF ORIGIN : KOREA
- ID. CODE : SRT

## ***Sarotech Co., Ltd.***

Sarotech Bldg, 320-15, Seongnae-Dong, Gangdong-Gu, Seoul, Korea 134-851

E-mail support: [support@sarotech.com](mailto:support@sarotech.com)

<http://www.abigs.co.kr>      <http://www.sarotech.com>

For Class B digital device  
INFORMATION TO THE USER

This equipment has been tested and found to comply with the limits for a Class B digital device, pursuant to part 15 of the FCC Rules. These limits are designed to provide reasonable protection against harmful interference in a residential installation. This equipment generates, uses and can radiate radio frequency energy and, if not installed and used in accordance with the instructions, may cause harmful interference to radio communications. However, there is no guarant that interference will not occur in a particular installation. If this equipment does cause harmful interference to radio or television reception, which can be determined by turning the equipment off and on, the user is encouraged to try to correct the interference by one more of the following measures:

Reorient or relocate the receiving antenna.

Increase the separation between the equipment and receiver.

Connect the equipment into an outlet on a circuit different from that to which the receiver is connected.



Changes or modifications not expressly approved by the manufacturer could void the user's authority to operate the equipment.



**Disposal of Old Electrical & Electronic Equipment (Applicable in the European Union and other European countries with separate collection systems)**

This symbol on the product or on its packaging indicates that this product shall not be treated as household waste. Instead it shall be handed over to the applicable collection point for the recycling of electrical and electronic equipment. By ensuring this product is disposed of correctly, you will help prevent potential negative consequences for the environment and human health, which could otherwise be caused by inappropriate waste handling of this product. The recycling of materials will help to conserve natural resources. For more detailed information about recycling of this product, please contact your local city office, your household waste disposal service or the shop where you purchased the product.



DVP-570HD

**Sarotech**  
[www.sarotech.com](http://www.sarotech.com)

Head Office : Sarotech Bldg. 320-15, Seongnae- Dong,  
Gangdong-Gu, Seoul, Korea

E-mail support: [support@sarotech.com](mailto:support@sarotech.com)  
<http://www.sarotech.com>