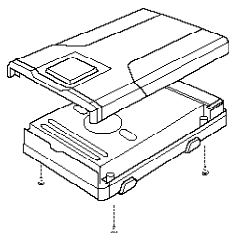
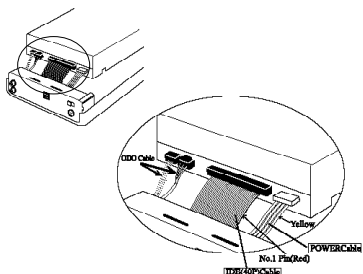


1. How to the Drive(CD-ROM/CD-R W)

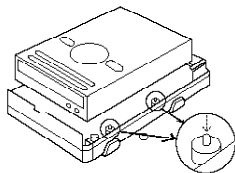
1. Hold the above upper and below case of the product and draw the upper case.



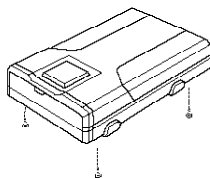
2. Connect the CD-ROM/CD-RW drive, that is prepared in the below case, to each cable.
Connect the cable refer to the drawing and try to connect by the color of the drawing.



3. Put the CD-ROM/CD-RW to the fixing plate as the drawing.



4. Tighten up the 4 screws after cover the upper case.



5. Connect the power adapter(AC/DC) to the DC Jack of FCD-523 and connect the AC power cable to the power outlet.

- **Caution:** You should be Jumper of CD-ROM/RW to Master on the mount FCD-523.

2. Package Contains

- 1) FCD-523 Case
- 2) Install CD Driver
- 3) Interface Cable
- 4) Guide Manual
- 5) Power Adapter
- 6) AC Power Cable

3. System Requirement

586, Pentium or Greater

System can use the Interface port

Included CD-ROM Drive or you can download the Driver from Internet web Site.

4. Driver Installation

Caution: Connect the product after carry out the "Tppinst" first

Caution: Use USB2.0

- 1) If the USB2.0 product is connected to USB1.1 Host Adapter, It will be operated to USB1.1 speed(12Mbps).
- 2) If you want to use the USB2.0 products as 480Mbps, you have to prepare the USB2.0 Host Adapter which has the USB2.0 Controller.

Driver Installation for USB1.1

1. For Window 98/ME/2000

- 1) Insert the offered installation disk to the floppy drive in Computer.
- 2) Can find the "Win98" folder in A drive of "My computer" on Window.
- 3) Click the Setup.exe file in "Win98" folder of A Drive and the driver will be installed automatically.
- 4) Confirm if the power adapter is connected to the outlet and FCD-523 and the turn on the power.
- 5) First, connect the USB cable to the interface of FCD-523.
- 6) Then connect the USB cable to the interface port in Computer.
- 7) Make sure if the CD-ROM drive icon is appearing in "My Computer".

2. For Window ME

- 1) Confirm if the power adapter is connected to the outlet and FCD-523 and the turn on the power.
- 2) Booting the Windows ME.
- 3) Connect the offered interface cable to FCD-523.
And then connect to USB port in Computer.
- 4) Can find the message "USB Big capacity preservation installation.
- 5) Find the model like CD-ROM/CD-RW (ex.:LG LED-8120B USB Device).
- 6) Coming out to the "USB CD-ROM" confirm if the CD-ROM drive icon is appearing in "My Computer".

Caution: Do not install with the drive in "Win 98" folder of driver installation disk.

Caution: The <usbnt map.sys>file will be required during installation.

This file is in the win9x folder in CD of original Window ME.
(base 2.cab file).

3. For Window 2000

- 1) Confirm if the power adapter is connected to the outlet and FCD-523 and the turn on the power.
- 2) Booting the Window 2000.
- 3) First, connect the offered interface cable to the FCD-523.
- 4) Then connect to the USB port in Computer.
- 5) Booting the Window 2000 and connect the FCD-523 then automatically "USB capacity preservation installation" will be appeared.
- 6) Find the model like CD-ROM/CD-RW (Ex.:LG LED-8120B USB Device).
- 7) Coming out to the "USB CD-ROM" confirm if the CD-ROM drive icon is appearing in "My Computer".

Caution: Do not install with the drive in "Win 98" folder of driver installation disk.

Ref.: If the system doesn't have perfect Window 2000, it can not be installed automatically.

Ref.: If the "New hardware found" and " Scanlogic USBIDE" is appeared in Window 2000 server do as follows;

- a. Choose the "proper driver retrieval in device".
- b. Check the "Position designation".
- c. Insert the disk from "Searching".
- d. Click the "Next" if the A:/WIN2K/USB2K.INF file is coming out.
- e. Try to find the message "The Scanlogic USB Mass Storage Device" is found, then click the "finish".

4. For Window XP

- 1) Confirm if the power adapter is connected to the outlet and FCD-523 and the turn on the power.
- 2) Booting the Windows ME.
- 3) Connect the offered interface cable to FCD-523.
- 4) Then connect to the USB port in Computer.
- 5) In Windows XP, it will be recognized with "ScanLogic USBIDE" without Driver
Caution: Do not install with the drive in "Win 98" folder of driver installation disk.

Driver Installation for USB2.0

1. For Window 98/ME/2000

- 1) Do not connect the product, first.
Insert the offered CD to the CD-ROM in Computer.
- 2) Find USB folder under the PC folder in CD-ROM.
And carry out the "Tppinst.exe" and then click the "Next".



- 3) Confirm if the "Complete" is chosen in the "Set up type and then click the "Next".



- 4) Make sure if the power adapter(AC/DC) is connected to putlet and FCD-523 and then turn on the power.
- 5) Connect the interface cable to interface port of FCD-523.

- 6) Then connect the interface cable to the interface port in Computer



- 7) Confirm if the CD-ROM drive icon is appearing in "My Computer"

2. For Window XP

- 1) Confirm if the power adapter is connected to the outlet and FCD-523 and the turn on the power.
- 2) Booting the Window XP.
- 3) First, connect the offered USB cable to the FCD-523.
- 4) Then connect to the Interface port in Computer.
- 5) Can find the message "USB Big capacity preservation installation."
- 6) Find the model like CD-ROM/CD-RW (Ex.:LG LED-8120B USB Device).
- 7) Coming out to the "USB CD-ROM" confirm if the CD-ROM drive icon is appearing in "My Computer".

Drive Installation for IEEE 1394

Caution: To meet the "Plug & Play skill" of Windows, turn on then the power and then connect to the IEEE 1394 port in Computer.

1. For Window 98 SE

Caution: "Window 98 SE CD-ROM" is required to install the FCD-523.

Please prepare the "Window 98 SE CD-ROM".

(FCD-523 can be installed over Window 98 SE Version)

- 1) Confirm if the power adapter(AC/DC) is connected to outlet and FCD-523 then turn on the power.
- 2) Booting the Window 98 SE
- 3) Connect the IEEE 1394 cable to FCD-523, first.

- 4) Then, connect to the IEEE 1394port in Computer.
- 5) Find the message "Insert the Disk" then insert the "Window 98 SE CD-ROM" to CD-ROM drive and then click the "Confirmation".
The driver will be installed automatically.
- 6) Coming out to the "USB CD-ROM" confirm if the CD-ROM drive icon is appearing in "My Computer".

Caution: please check it whether you can see after installed as follows;

Control panel- System- Device Manager- CD-ROM/CD-RW and Control Panel in CD-ROM- System-Device Manager- External Storage- 1394/USB Disk and Control Device- System Device Manager-SBP2-SBP2 Compliant IEEE 1394 Device.

3. For Window 2000/XP

- 1) Confirm if the power adapter(AC/DC) is connected to outlet and FCD-523 then turn on the power.
- 2) Booting the Window 2000.
- 3) Connect the IEEE 1394 cable to FCD-523, first.
- 4) Then, connect to the IEEE 1394port in Computer.
- 5) Coming out to the "USB CD-ROM" confirm if the CD-ROM drive icon is appearing in "My Computer".

Caution: Please check it after finished Installation

Control Panel- Hardware- Device Manager-DVD/CD-ROM Drivers-Sarotech Co., Ltd. FCD-522F IEEE 1394 SBP2 Device.

Check the Driver Installation

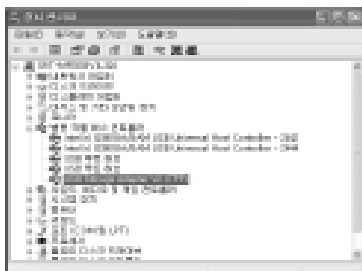
1. For Windows 98/ME

Control Panel-System-Device Manager-
Universal Series Bus controller



2. For Window 2000

Control Panel- System- Hardware-
Device Manager-Universal Series Bus
Controller



3. For Window XP

Control Panel- System-Hardware-
Device Manager



How to stop the product

If you want to separate the product, please do as follow;

1. Click the "Tray icon" once that is under the "start operation indication line".
You can see same thing as the drawing.
2. If you choose it, you can find the message as below; at that time, separate the product the product from the Interface port.



Speciffaction

Model	FCD-523
Interface	USB 1.1/2.0/IEEE 1394(Firewire Recording)
Max Data	12/480/400Mbps
Size	254 x 178 x 55mm
Weight	590g(Without Drive)
Power	External Adapter 90-240 AC(Free Voltage)
OS supported	Windows 98 SE/ME/2000/SE

FCC Compliance

This equipment has been tested and found to comply with the limits for a Class B digital device, pursuant to part 15 of the FCC rules.

These limits are designed to provide reasonable protection against harmful interference in a residential installation. This equipment generates, uses, and can radiate radio frequency energy and, if not installed and used in accordance with the instructions, may cause harmful interference. Interference will not occur in a particular installation.

- Reorient or relocate the receiving antenna.
- Increase the separation between the equipment and receiver.
- Connect the equipment to an outlet on a circuit different from that to which the receiver is connected.
- Consult the dealer or an experienced radio/TV technician for help

This device complies with part 15 of the FCC Rules. Operation is subject to the following two conditions; (1) This device may not cause harmful interference, and (2) This device must accept any interference received, including interference that may cause undesirable operation.

WARNING: Changes or modifications not expressly approved by the manufacturer could void the user's authority to operate the equipment.

User's Guide

EXTERNAL CD-ROM/CD-RW(FCD-523)

Flex-CD



INSTALLATION MANUAL

We strongly recommend reading the MANUAL before using the product

Sarotech Co., Ltd.