

Chapter 2 What FCD-524 contains.

- 1) Main Case of FCD-524
- 2) CD Driver installation(only for USB)
- 3) Interface cable
- 4) Guide manual
- 5) AC Power cable

Chapter 3 System requirement

- 586 Pentium or higher
- System can use the USB or IEEE 1394 port
- CD-ROM DRIVE or internet connection for downloading DRIVER

※ Attention

- Please avoid from impact.
- Keep away from high temperature.
- Keep away from high moisture.

Chapter 4 Driver installation

■ Driver installation for USB 2.0

- **Caution** : Make sure the Tppinst.exe file before connecting.

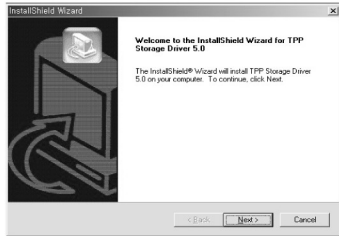
- **Known Problem of USB 2.0**

- 1) It works as of USB 1.1 speed(12Mbps) connected to USB 1.1 Host Adapter.
Recording could be 4 times faster.
- 2) Need USB 2.0 Host Adapter with USB 2.0 controller to show full play of
480Mbps(maximum).

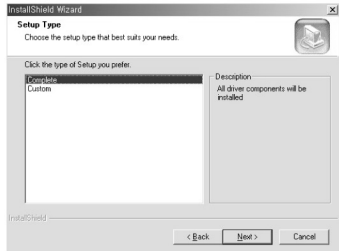
1. Driver installation for Windows 98/ME

- 1) Please insert indtall CD to CD-ROM before connecting.

- 2) Run "Tppinst.exe" file and press next button in USB folder.



- 3) Press "Next" button when complete selected on setup type.



- 4) Turn on after connecting AC power cable to FCD-524.
- 5) Connect USB cable to FCD-524 USB port before connecting USB cable to PC USB port.
- 6) Please confirm that CD-ROM drive icon appeared on "My computer".

2. Driver installation for Windows 2000/XP

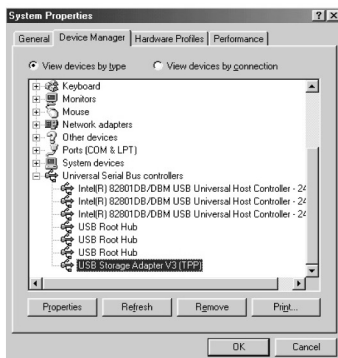
- 1) Turn on with connecting AC power cable to FCD-524 case.
- 2) Booting the Windows 2000/XP.
- 3) Connect USB cable to FCD-524 USB port before connecting USB cable to PC USB port.
- 4) The message "USB mass storage" would be shown.
- 5) Brand of CD-ROM/CD-RW (ex : LG CED-8120B USB Device) will be shown.
- 6) Please confirm that CD-ROM drive icon appeared on "My computer".

3. Confirmation of driver installation

Please confirm driver installation done on operating system(OS)

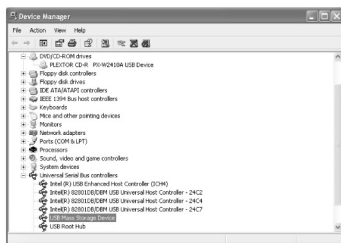
1) Windows 98/ME

Control panel → System → Device Manager → Universal Serial Bus controllers



2) Windows 2000/XP

Control panel → System → Hardware → Device Manager → Universal Serial Bus controllers



4. How to stop on running

Please stop machine on running before separating it.

1) Click "Tray icon" then it appears as the image below.



2) Separate the product from USB port after selecting.



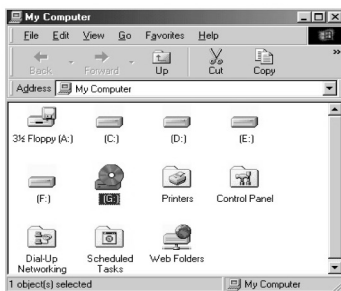
■ Driver installation for IEEE 1394

- **Notice** : Please connect to IEEE 1394 port after turn off to satisfy Windows Plug & Play function.

1. Installation for Windows 98 SE

- **Notice** : Prepare "Windows 98 SE CD-ROM" to install FCD-524F.
(FCD-524F works Windows 98 SE or higher version.)

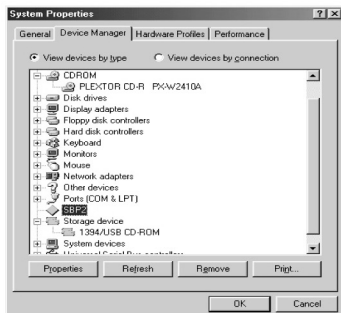
- 1) Turn on after connecting AC power cable to FCD-524.
- 2) Booting the Windows 98 SE.
- 3) Connect IEEE 1394 cable to FCD-524 before connect it to IEEE 1394 port on PC.
- 4) Insert "Windows 98 SE CD-ROM" to CD-ROM drive and press OK button for installation.
- 5) Confirm the CD icon appear on my PC.



※ **Confirmation** : Control panel →

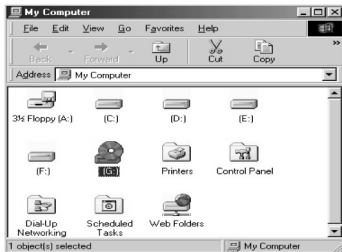
System → Device Manager
→ CD-ROM/CD-RW in CD-ROM

Control panel → System →
Device Manager → Storage
device → 1394/USB Disk



2. Installation for Windows ME

- 1) Turn on the switch after connecting AC power cable to conents and FCD-524.
- 2) Booting the Windows ME.
- 3) Connect IEEE 1394 cable to FCD-524 before connect it to IEEE 1394 port on PC.
- 4) Please confirm the CD-ROM icon on my PC.



※ **Confirmation** : Please confirm the installation done (Control pannel → System →

Device Manager → CD-ROM CD-ROM/CD-RW

Control pannel → System →

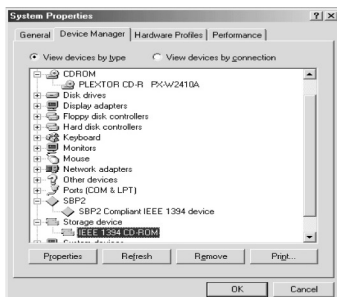
Device Manager → Storage

device → 1394/USB Disk

Control pannel → System →

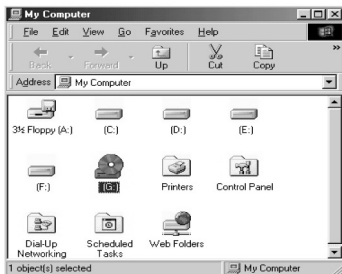
Device Manager → SBP2 →

SBP2 Compliant IEEE 1394 device

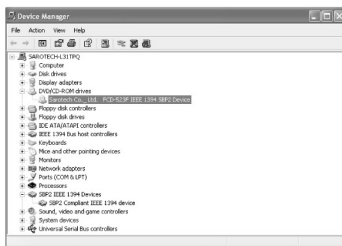


3. Installation for Windows 2000/XP

- 1) Turn on before connecting AC power cable to FCD-524.
- 2) Booting the Windows 2000/XP.
- 3) Connect IEEE 1394 cable to FCD-524 then to IEEE 1394 port on PC.
- 4) Please confirm CD-ROM Driver icon appears on "My Computer"



※ **Confirmation** : Please confirm the installation done (Control pannel → System → Hardware → Device Manager → DVD/CD_ROM drivers → Sarotech Co.,Ltd. FCD-524F IEEE 1394 SBP2 Device)



■ **Driver installation for IEEE 1394 + USB Combo**

Please refer to Chapter 4 for USB 2.0 and IEEE 1394

Specification

Model	FCD-524	
Interface	USB 2.0	IEEE 1394
Data Transfer	480Mbps (Max)	400Mbps (Max)
Size	289.4 x 167 x 60mm (D x W x H)	
Weight	880g(CD-RW without)	
Power	AC 90 ~ 250V(Free Voltage)	
OS supported	Windows 98 SE/ME/2000/XP	
System	Any Desktop or Laptop which has USB port or IEEE 1394 port	

REV.1