

Please mark as USB Storage Device on the top of the pages.

FLEX Drive



※ INSTALLATION MANUAL

We strongly recommend reading the MANUAL before using the product

FCC Compliance

LABELLING REQUIREMENTS(Part 15, Section 15.19 (a)(3))

This device complies with Part 15 of the FCC Rules. Operation is subject to the following two conditions: (1) this device may not cause harmful interference, and (2) this device must accept any interference received, including interference that may cause undesired operations.

The instructions furnished the user shall include the following or similar statement, placed in a prominent location in the text of the manual.

INFORMATION TO THE USER (Part 15, Section 15.105(b))

INFORMATION TO THE USER

This equipment has been tested and found to comply with the limits for a Class B digital device, pursuant to part 15 of the FCC Rules. These limits are designed to provide reasonable protection against harmful interference in a residential installation. This equipment generates, uses and can radiate radio frequency energy and, if not installed and used in accordance with the instructions, may cause harmful interference to radio communications. However, there is no guarantee that interference will not occur in a particular installation. If this equipment does cause harmful interference to radio or television reception, which can be determined by turning the equipment off and on, the user is encouraged to try to correct the interference by one more of the following measures:

- Reorient or relocate the receiving antenna.
- Increase the separation between the equipment and receiver.
- Connect the equipment into an outlet on a circuit different from that to which the receiver is connected.
- Consult the dealer or an experienced radio/TV technician for help.

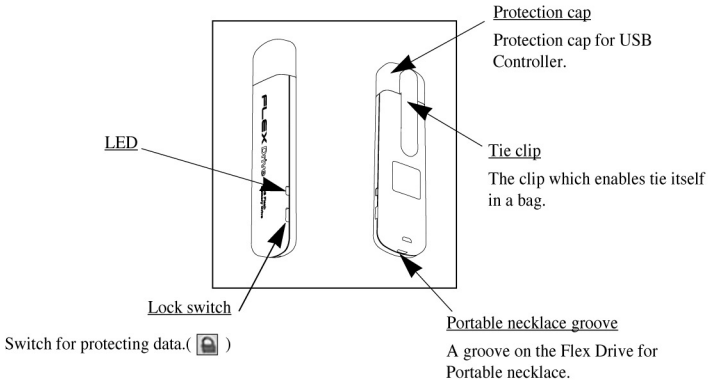
WARNING (Part 15, Section 15.21)

Changes or modifications not expressly approved by the sarotech could void the user's authority to operate the equipment.

Chapter 1 What Flex Drive contains

- 1) Flex Drive main device
- 2) CD for driver installation
- 3) USB connection cable
- 4) Guidance manual
- 5) Portable necklace

Chapter 2 Description of each components (Please insert image files and explain.)



Chapter 3 System requirement

- 586 Pentium **II** or higher PC or MAC
- Proper USB connection
- Built in CD-ROM DRIVE or the enable situation for downloading DRIVER from internet

※ Caution

- Please avoid from physical impact.
- Please keep away from high temperature.
- Please keep away from moisture.

Chapter 4 Features

1. Mass data transfer through USB 2.0

USB1.1 transfer data as speed of 12Mbps.

But as FD-01U2 is supporting the USB 2.0, transfer 40 times faster than USB1.1 as speed of 12Mbps.

USB 2.0 host adapter required.

2. Function of Password

Protecting the contents in Flex Drive from others.

The correct password is needed to use the product.

For the loss of password, you have to format again to see the contents.

3. Function of booting disk.

Supporting the function of booting is the same way to make the booting disk.

Flex Drive is supporting the independent booting as FDD, CD-R, HDD.

The main board which support USB-HDD booting required.

4. No need for independent power supply

It works as of USB power supply.

5. Switch of protecting lock ()

This switch changes to read only mode to protect data loss.

6. Small and unique feature

It's small and unique feature satisfy customers' needs.

Chapter 5 Driver installation

1. Driver installation for Windows 98

1) You can see the message "USB Mass Storage Device" when you connect to USB port after activate Windows 98.

Insert CD for driver installation and click next button.



- 2) Check “searching proper driver for system (recommended)” and click next



- 3) Check the folder that you want to search and click "searching".
Find out the driver installation CD.



- 4) Click next when you see “USB Mass Storage Device 2.0”



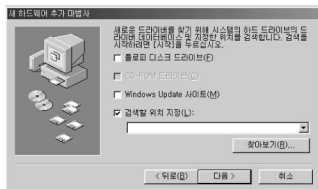
- 5) Click "finish" button when you see message "finishing install the software"



- 6) Coming out the message "finding USB Security Device", click "cancel" button when you see message "What will you do?"



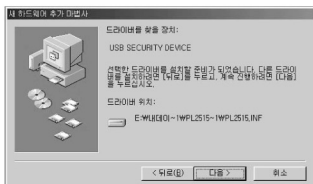
- 7) Choose "optimized drive to your system (recommended)" then click next button.



- 8) Click "Search" button to find out the location of driver install CD.



- 9) Click "Next" when you find "USB SECURITY DEVICE"



- 10) Press "OK" button when "USB Flash Disk Password Check" message shows up.



- 11) Press "OK" when "Password Correct" message shows up.



- 12) Press "Finish" button when "USB Security Drive" installed.



- 13) You can see new icon of "Portable Disk" on My Computer.

2. Drive installation for Windows ME/2000/XP

- 1) Connect Flex Drive to USB port after activate Windows ME
- 2) Your PC automatically recognize as "USB mass storage"
- 3) Coming out the message "finding USB Security Device", click "cancel" button when you see message "What will you do?"
- 4) You can see the icon as "portable disk" as a sub-tree on my computer

3. Security function

Fine the message 'no. 6)' of driver installation for Windows 98 and then install the drive.

(1) usage for Windows 98

1) Click "OK" button.



2) Click "OK" button.



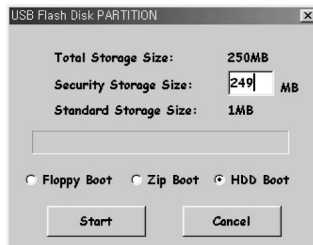
3) Click "Finish:" button



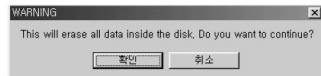
4) Click "PARTITION" button.



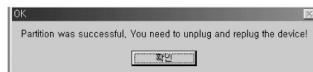
5) Click "Start" button



6) Click "OK" button



7) Click "OK" button



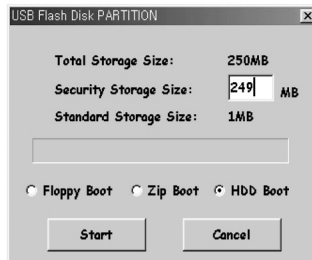
8) Reconnect the device to PC after shut down all the windows. You can see 2 sub-trees on My PC.

(2) usages for ME/2000/XP

1) Execute PL2515C_AP v10015.exe file in Win2K_XP folder



2) Execute "USB Flash Disk Utility Xpand 2K" on desk top.



3) Click "OK" button



4) Click "OK" button



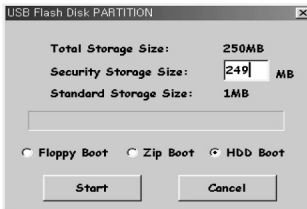
5) Click "Finish" button



6) Click "PARTITION" button



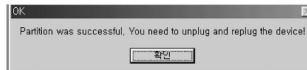
7) Click :START" button



8) Click "OK" button



9) Click "OK" button to finish



10) Reconnect the device to PC after shut down all the windows. You can see 2 sub-trees on My PC.

4. Installation for Mac OS

Mac automatically recognize it when you connect Flex Drive.

5. Confirming installation

Please confirm it works properly after the installation.

1) Windows 98

Control panel → System → Device manager
→ Universal series Bus Controller → Hi-Speed USB2.0 Mass Storage Device



2) Windows ME

Control panel → System → Device manager → Universal series Bus Controller → USB mass storage and USB Security Device



3) Windows 2000/XP

Control panel → System → Hardware → Device manager → Universal series Bus Controller → USB mass storage and USB Security Device



6. To quit during working

Please completely finish your machine before detach it as mentioned below..

- 1) Click "Tray icon" on bottom of the task bar.



- 2) Disconnect it from USB port when you see messages as below.



Chapter 6 Known problems

- 1) Removing device when red LED turns on could make data loss
- 2) For loss of password, the data can not be restored.
Do not forget the password.

Specification

Model name	FD-01U2
Interface	USB 2.0
Size	20.5 x 81 x 9mm (including protection Cap)
Data transfer	Read : 4MB/sec, Write : 1.4MB/sec
Weight	10g
Power	USB bus power
OS supported	Windows 98/ME/2000/XP, Mac OS 9.0 or higher
System requirement	Desktop PC, Notebook PC supporting USB port