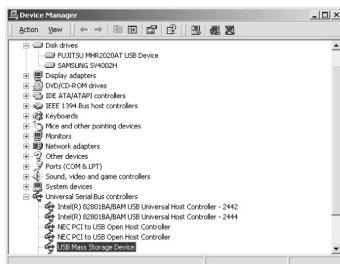


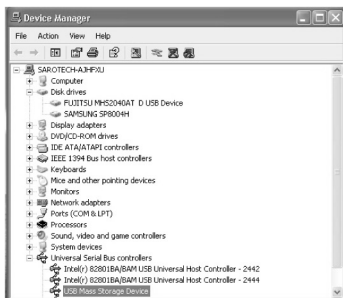
2. Windows 2000

Control panel -> System -> Hardware
-> Device manager -> Universal series
Bus Controller.



3. Windows XP

Control panel -> System -> Hardware
-> Device manager -> Universal series
Bus Controller .



7. How to stop the product

If you want to stop separate the product when you are using it, please follow the below
(Windows ME/2000/XP)

1) Click the "tray icon" under the "start"
and then you can find the below
drawing



2) Choose it and read the message.
Separate the product from USB port



5-2 Installation of IEEE 1394

■ Caution

1. Turn on the power to satisfy the plug & play function of window and then connect to the IEEE1394 in computer
2. If the IEEE 1394 port has 4 pins or using Card Bus way of notebook computer, the power can not be supplied.
Please connect the power adapter or USB power cable.

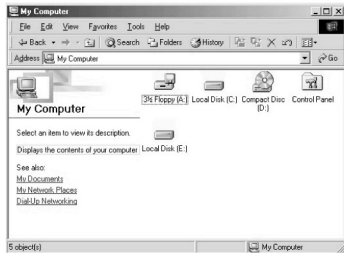
1. Windows 98 SE

- **Caution** : Be sure to ready "Window 98 SE CD-ROM" before you install FHD-254 (FHD-254 can be installed only Windows 98 SE or later version)

- 1) Booting Windows 98 SE
- 2) Connect the IEEE 1394 cable to the FHD- 254 and IEEE 1394 port in computer
- 3) Finding the message " insert the disk" --> insert the "Windows 98 SE CD-ROM" in CD-ROM drive --> click "confirmation" .

Then the driver will be installed automatically

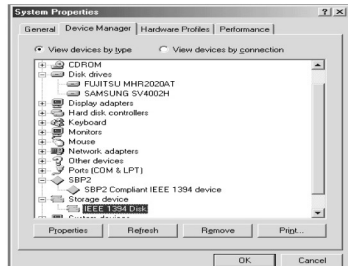
- 4) Make sure if the hard disk icon is appearing in "my computer"



- **Caution** : The new hard disk which doesn't have FDISK and FORMAT, can not be recognized in "my computer" If you want to FDISK and FORMAT, you have to follow the way in "NO. 6 the way of PARTITION and FORMAT" Then the drive will be installed in "my computer"

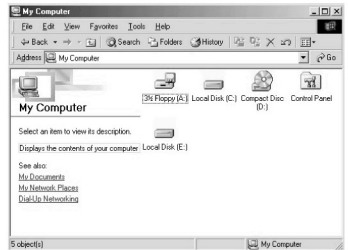
■ checking the installation :

After finishing the installation Control panel -> System --> Hardware -> Device manager -> Disk drive --> Sarotech Co.,Ltd. FLEX HDD IEEE 1394 SBP2 Device



2. Windows ME

- 1) Booting Windows ME
- 2) Connect the IEEE 1394 cable to the FHD- 254 and IEEE 1394 port in computer
- 3) Make sure if the hard disk icon is appearing in "my computer"

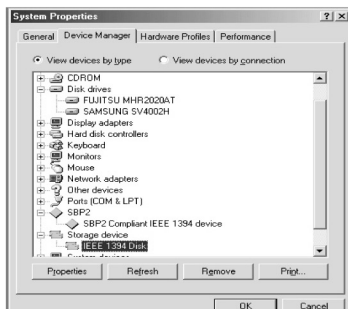


■ **Caution** : The new hard disk which doesn't have FDISK and FORMAT, can not be recognized in "my computer" If you want to FDISK and FORMAT, you have to follow the way in "NO. 6 the way of PARTITION and FORMAT" Then the drive will be installed in "my computer"

■ checking the installation :

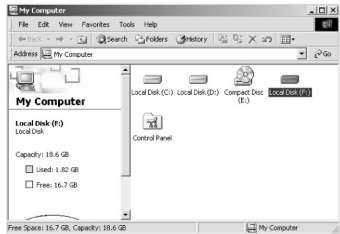
After finishing the installation, please check if the below things are showing up.

- ▶ Control panel --> System --> Device manager -> Hard disk model in Disk drive
- ▶ Control panel -> System -> Device manager --> storage equipment --> 1394/USB Disk
- ▶ Control panel -> System -> Device manager --> SBP2 --> SBP2 Compliant IEEE1394 device



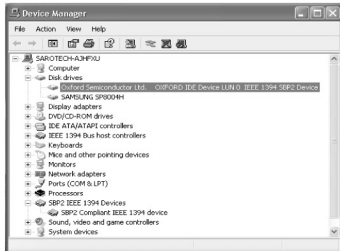
3. Windows 2000/XP

- 1) Booting Windows 2000/XP
- 2) Connect the IEEE 1394 cable to the FHD- 253 and IEEE 1394 port in computer
- 3) Make sure if the hard disk icon is appearing in "my computer"



■ checking the installation :

After finishing the installation Control panel -> System --> Hardware -> Device manager -> Disk drive --> Sarotech Co.,Ltd. FLEX HDD IEEE 1394 SBP2 Device



4. MAC OS

If it is over MAC 8.6 and over Firewire enabler 2.7, it will be installed automatically without any special driver.

- **Caution** : 1. Should be over MAC OS 8.6
- 2. The hard disk which doesn't have FDISK and FORMAT, can not be recognized
- 3. If you want to use it in MAC and IBM, please carry out the FDISK and FORMAT in IBM computer.

- **MAC OS 8.6 and 9X version**

- (1) Booting MAC OS before connecting the product
- (2) Install the driver on the below part of offered driver CD
Carry out MAC OS£ Firewire£\OS 8.6-9.X\Korean\Bs Crew mini Install
- (3) Re-booting the computer and connect FHD-254

- **MAC X version**

It will be recognized without any special driver

5-3 Driver installation of IEEE 1394 + USB Combo

Please refer to the USB 2.0 driver installation on "No. 5 - Driver installation" and also refer to the driver installation of IEEE 1394

6. How to PARTITION and FORMAT

- **Caution** : You have to install the driver before making PARTITION and FORMAT.
(except IEEE 1394)

1. Windows 98/ME

- **The way to Fdisk and Format with new hard disk (with one drive)**

- ① Install the driver before connecting the product to computer.(for USB way)
- ② After Installing the driver -> start -> program -> click korean MS-Dos
- ③ Type "Fdisk" directly and press "Enter"
- ④ Finding the question "Will you use the big disk support function(Y/N)?"
Type "Y" and press "Enter"
- ⑤ Choose the "No.5 change the present hard disk" among the fdisk options.
- ⑥ Choose the last number in change the " hard disk drive" -> type the hard disk number of fdisk in " type the hard disk number" -> press "Enter"