

CUTIE^{EX}

POCKET HARD DISK DRIVE



※ INSTALLATION MANUAL

We strongly recommend reading the MANUAL before using the product

FCC Compliance

LABELLING REQUIREMENTS(Part 15, Section 15.19 (a)(3))

This device complies with Part 15 of the FCC Rules. Operation is subject to the following two conditions: (1) this device may not cause harmful interference, and (2) this device must accept any interference received, including interference that may cause undesired operations.

The instructions furnished the user shall include the following or similar statement, placed in a prominent location in the text of the manual.

INFORMATION TO THE USER (Part 15, Section 15.105(b))

INFORMATION TO THE USER

This equipment has been tested and found to comply with the limits for a Class B digital device, pursuant to part 15 of the FCC Rules. These limits are designed to provide reasonable protection against harmful interference in a residential installation. This equipment generates, uses and can radiate radio frequency energy and, if not installed and used in accordance with the instructions, may cause harmful interference to radio communications. However, there is no guarantee that interference will not occur in a particular installation. If this equipment does cause harmful interference to radio or television reception, which can be determined by turning the equipment off and on, the user is encouraged to try to correct the interference by one more of the following measures:

- Reorient or relocate the receiving antenna.
- Increase the separation between the equipment and receiver.
- Connect the equipment into an outlet on a circuit different from that to which the receiver is connected.
- Consult the dealer or an experienced radio/TV technician for help.

WARNING (Part 15, Section 15.21)

Changes or modifications not expressly approved by the sarotech could void the user's authority to operate the equipment.

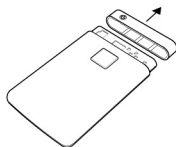
Information

FCC Compliance	1
Information	2
No.1 How to make the HDD	3
■ How to make USB products	3
■ How to use USB power cable	4
No.2 Contents of FHD-255	4
No.3 Cautions for USB 2.0	5
No.4 System Requirement	5
No.5 Driver Installation	5
5-1. Installation of USB 2.0 driver	5
1. For Windows 98	5
2. For Windows ME	7
3. For Windows 2000	7
4. For Windows XP	8
5. For MAC OS	8
6. Checking the driver installation	9
7. How to stop the product	10
5-2. Installation of IEEE 1394	10
1. Windows 98 SE	10
2. Windows ME	11
3. Windows 2000/XP	12
4. For MAC OS	13
5-3. Driver installation of IEEE 1394 + USB Combo	13
No.6 How to PARTITION and FORMAT	14
1. Windows 98/ME	14
2. Windows 2000	15
3. Windows XP	17
No.7 Please check when you have some troubles	19
Specification	20

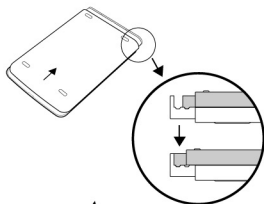
1. How to make the HDD

■ How to make USB products

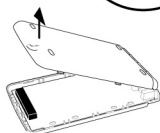
1. Remove the ring from FHD-255 main frame.



2. Pull up the bottom side like a image.



3. Remove the bottom side.

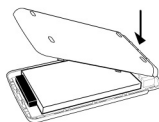


4. Connect HDD to PCB 44pin connector.
Please make sure HDD and PCB connector should be connected with first pin.

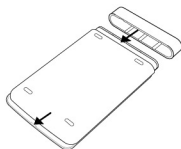


■ **Note** : Don't connect PCB to 4 pins besides HDD. This is for Master/Slave set up.

5. Connect the bottom side to FHD-255.



6. Connect the ring to FHD-255.



3. Cautions for USB 2.0

1. If the USB 2.0 product is connected to USB 1.1 Host Adapter, it will be operated as speed 1.1 (12Mbps)
2. If you want to use USB 2.0 product as USB 2.0 speed(Max.480Mbps), you have to use USB 2.0 Host Adapter.

4. System Requirement

- 586 Pentium or greater or MAC
- USB port has to be possible to use
- Included CD-ROM drive or the driver should be possible to be downloaded from internet web site.

※ Caution

- Be careful not to have any slight impact
- Do not keep it in high temperature places
It can make some troubles
- Do not keep it in humid places

5. Driver Installation

5-1 Installation of USB 2.0 driver

■ Caution

Using below 6GB hard disk can make some troubles like loss of data We recommend you to use 6GB hard disk or greater

1. Windows 98

- 1) Insert the offered CD into the CD-ROM drive in computer before you connect the product

- 2) Carry out "Win98Setup.exe" which is in USB folder under Windows folder in CD-ROM



- 3) Completing "InstallShield Wizard" then click "Next"

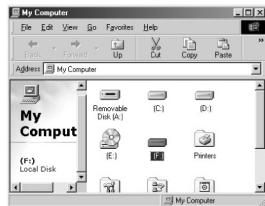


- 4) Coming out the message "InstallShield Wizard Complete", click "Finish".
The driver will be installed



- 5) Connect the FHD-255 to the USB port in computer.

- 6) The drive icon will be installed in "my computer"



- **Caution** : The new hard disk which doesn't have FDISK and FORMAT, can not be recognized in "my computer" If you want to FDISK and FORMAT, you have to follow the way in "NO. 6 the way of PARTITION and FORMAT" Then the drive will be installed in "my computer"

2. Windows ME

- 1) Connect the FHD-255 to the USB port in compute
- 2) Finding out the new hardware "USB Mass Storage Device", the driver will be installed automatically.
- 3) The drive icon will be installed in "my computer"



- 4) <usbntmap.sys.> etc..the files can be required.

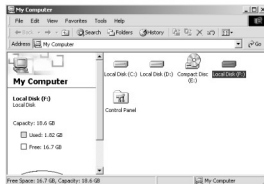
The files are in the base2.cab in WIN9X folder in Windows ME original CD.

- **Caution** : The new hard disk which doesn't have FDISK and FORMAT, can not be recognized in "my computer" If you want to FDISK and FORMAT, you have to follow the way in "NO. 6 the way of PARTITION and FORMAT" Then the drive will be installed in "my computer"

3. Windows 2000

- 1) Connect the FHD-255 to the USB port in computer
- 2) Finding out the new hardware "USB Mass Storage Device", the driver will be installed automatically.

- 3) The drive icon will be installed in "my computer"



- **Caution** : The new hard disk which doesn't have FDISK and FORMAT, can not be recognized in "my computer" If you want to FDISK and FORMAT, you have to follow the way in "NO. 6 the way of PARTITION and FORMAT" Then the drive will be installed in "my computer"

4. Windows XP

1. Connect the FHD-255 to the USB port in computer
2. Finding out the new hardware "USB Mass Storage Device", the driver will be installed automatically.
3. The drive icon will be installed in "my computer"



- **Caution** : The new hard disk which doesn't have FDISK and FORMAT, can not be recognized in "my computer" If you want to FDISK and FORMAT, you have to follow the way in "NO. 6 the way of PARTITION and FORMAT" Then the drive will be installed in "my computer"

5. MAC

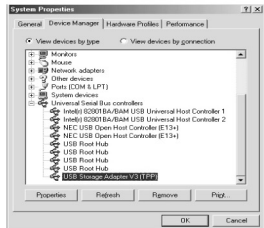
For MAC OS 9.x or greater, the driver will be recognized without any other driver.

6. Checking the driver installation

Make sure if the driver is connected successfully on the OS position.

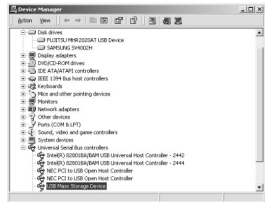
1. Windows 98/ME

Control panel -> System -> Device manager -> Universal series Bus Controller .



2. Windows 2000

Control panel -> System -> Hardware -> Device manager -> Universal series Bus Controller.



3. Windows XP

Control panel -> System -> Hardware -> Device manager -> Universal series Bus Controller .



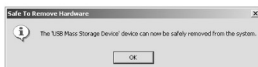
7. How to stop the product

If you want to stop separate the product when you are using it, please follow the below (Windows ME/2000/XP)

- 1) Click the "tray icon" under the "start" and then you can find the below drawing



- 2) Choose it and read the message. Separate the product from USB port



5-2 Installation of IEEE 1394

■ Caution

1. Turn on the power to satisfy the plug & play function of window and then connect to the IEEE1394 in computer
2. If the IEEE 1394 port has 4 pins or using Card Bus way of notebook computer, the power can not be supplied.
Please connect the power adapter or USB power cable.

1. Windows 98 SE

- **Caution** : Be sure to ready "Window 98 SE CD-ROM" before you install FHD-255
(FHD-255 can be installed only Windows 98 SE or later version)

- 1) Booting Windows 98 SE
- 2) Connect the IEEE 1394 cable to the FHD- 255 and IEEE 1394 port in computer