

- 3) Finding the message "insert the disk" --> insert the "Windows 98 SE CD-ROM" in CD-ROM drive --> click "confirmation".

Then the driver will be installed automatically

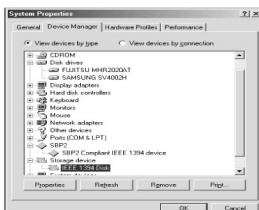
- 4) Make sure if the hard disk icon is appearing in "my computer"



- **Caution** : The new hard disk which doesn't have FDISK and FORMAT, can not be recognized in "my computer" If you want to FDISK and FORMAT, you have to follow the way in "NO. 6 the way of PARTITION and FORMAT" Then the drive will be installed in "my computer"

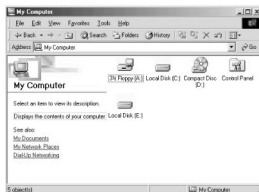
■ **checking the installation :**

After finishing the installation Control panel -> System --> Hardware -> Device manager -> Disk drive --> Sarotech Co.,Ltd. FLEX HDD IEEE 1394 SBP2 Device



## 2. Windows ME

- 1) Booting Windows ME  
2) Connect the IEEE 1394 cable to the FHD-255 and IEEE 1394 port in computer  
3) Make sure if the hard disk icon is appearing in "my computer"

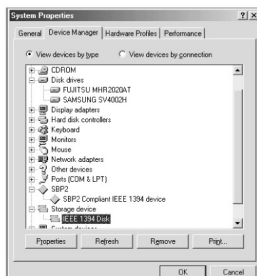


- **Caution** : The new hard disk which doesn't have FDISK and FORMAT, can not be recognized in "my computer" If you want to FDISK and FORMAT, you have to follow the way in "NO. 6 the way of PARTITION and FORMAT" Then the drive will be installed in "my computer"

■ **checking the installation :**

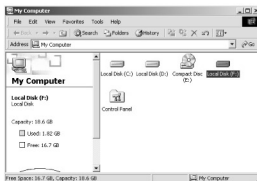
After finishing the installation, please check if the below things are showing up.

- ▶ Control panel --> System --> Device manager -> Hard disk model in Disk drive
- ▶ Control panel -> System -> Device manager --> storage equipment --> 1394/USB Disk
- ▶ Control panel -> System -> Device manager --> SBP2 --> SBP2 Compliant IEEE 1394 device



### 3. Windows 2000/XP

- 1) Booting Windows 2000/XP
- 2) Connect the IEEE 1394 cable to the FHD- 255 and IEEE 1394 port in computer
- 3) Make sure if the hard disk icon is appearing in "my computer"



## ■ Checking the installation :

After finishing the installation Control panel -> System --> Hardware -> Device manager -> Disk drive --> Sarotech Co.,Ltd.

FLEX HDD IEEE 1394 SBP2 Device



## 4. MAC OS

If it is over MAC 8.6 and over Firewire enabler 2.7, it will be installed automatically without any special driver.

- **Caution** : 1. Should be over MAC OS 8.6
- 2. The hard disk which doesn't have FDISK and FORMAT, can not be recognized
- 3. If you want to use it in MAC and IBM, please carry out the FDISK and FORMAT in IBM computer.

### ● MAC OS 8.6 and 9X version

- (1) Booting MAC OS before connecting the product
- (2) Install the driver on the below part of offered driver CD  
Carry out MAC OS\Firewire\OS 8.6-9.X\Korean\Bs Crew mini Install
- (3) Re-booting the computer and connect FHD-255

### ● MAC X version

It will be recognized without any special driver

## 5-3 Driver installation of IEEE 1394 + USB Combo

Please refer to the USB 2.0 driver installation on "No. 5 - Driver installation" and also refer to the driver installation of IEEE 1394

## 6. How to PARTITION and FORMAT

- **Caution :** You have to install the driver before making PARTITION and FORMAT.  
(except IEEE 1394)

### 1. Windows 98/ME

#### ■ The way to Fdisk and Format with new hard disk (with one drive)

- ① Install the driver before connecting the product to computer.(for USB way)
- ② After Installing the driver -> start -> program -> click korean MS-Dos
- ③ Type "Fdisk" directly and press "Enter"
- ④ Finding the question "Will you use the big disk support function(Y/N)?"  
Type "Y" and press "Enter"
- ⑤ Choose the "No.5 change the present hard disk" among the fdisk options.
- ⑥ Choose the last number in change the " hard disk drive" -> type the hard disk number of fdisk in " type the hard disk number" -> press "Enter"

- **Caution :** If you connect several hard disk, you could have wrong number.  
Please choose the 0% number as the picture.

- ⑦ Press "Esc" -> choose the "No. 1 select the logic dos drive or partition" among the fdisk option items -> type "No.1" -> press "Enter"
- ⑧ Choose "No.1 basic DOS partition" among select the logic dos drive or partition --> type "No.1" --> press "Enter"

- ⑨ Just wait for the "no formation test"
- ⑩ After finishing the "no formation test" you can find the message "Will you use the whole capacity for basis DOS partition?" -> type "Y" -> "Enter"
- ⑪ Type the "needed capacity or 0%" directly and press "Enter"
- ⑫ After finishing the "no formation test" again, you can find the message "select basis Dos partition, the drive word is changed or added" then press "Esc" to return to Fdisk option.
- ⑬ Press "Esc" -> find the message "re-start the computer" -> press "Esc" again
- ⑭ If you find C:\> press "Exit" to return to Windows.
- ⑮ Separate the FHD-255 from the computer Connect the FHD-255 to USB port or IEEE 1394 port in computer again
- ⑯ The "drive word" will be created in "my computer"
- ⑰ Choose the drive -> press the right side of Mouse and do the format (M)

## 2. Windows 2000

### ■ The way to Fdisk and Format with new hard disk (with one drive)

- ① Install the driver before connecting the product to computer. (for USB way)
- ② Install the driver and then connect the product to the USB port or IEEE 1394 port in computer.
- ③ Click "my computer" in the screen with the right side of Mouse -> choose management.
- ④ Click "not allotted (ex. disk 1)" in disk management with the right side of Mouse and make.
- ⑤ Coming out the disk you have to check and click "Next"
- ⑥ Coming out the disk signature and finishing upgrade magician, click "Finish"

- ⑦ Click the drive of "not allotted" in disk management with the right side of Mouse.
- ⑧ Choose the "making partition" among the menu.
- ⑨ After complete the "making partition magician" click "Next"
- ⑩ Checking if the "main partition(P)" is selected in kinds of partition, click "Next"
- ⑪ Type the needed capacity at "disk space" among the partition and click Next"
- ⑫ If the drive word is allotted, click "Next"
- ⑬ Choose the kind of file system (NTFS or FAT32) among the partition format.  
And click "Next" <picture

■ **Caution :** 1. The NTFS file system will be recognized only in " Windows 2000/XP".

If you want to use it with "Windows 98/ME", please choose "FAT32" system.

2. If you designate the file system as " FAT32" way in Windows 2000/XP, the drive word in over 32GB hard disk can not be one.

If you want to make the partition as "one", make partition and format in Windows 98/ME.

And also if you want to devide over 40GB hard disk into several partition, make it with "main partition(P)"

As the "expansion partition" can not be recognized, please make it with "main partition(P)"

- ⑭ After completing the "making partition magician", click "Finish"
- ⑮ It will be format automatically

### 3. Windows XP

Click "my computer" in the screen with the right side of Mouse -> choose management. If you can not find "management" --> start --> Click "my computer" in the screen with the right side of Mouse

#### ■ The way to Fdisk and Format with new hard disk (with one drive)

- ① Install the driver before connecting the product to computer. (for USB way)
- ② Install the driver and then connect the product to the USB port or IEEE 1394 port in computer.
- ③ Click "my computer" in the screen with the right side of Mouse -> choose management
- ④ Click "not allotted (ex. disk 1)" in disk management with the right side of Mouse and initialize
- ⑤ Choosing the initialized disk, click "Next"
- ⑥ Coming out "Finish changing magician and disk initialization" --> choose "Next"
- ⑦ Click the drive of "not allotted" in disk management with the right side of Mouse
- ⑧ After complete the "making partition magician" click "Next"
- ⑨ Checking if the "main partition(P)" is selected in kinds of partition, click "Next"
- ⑩ Type the needed capacity at "disk space" in partition size and click Next"
- ⑪ If the drive word is allotted, click "Next"
- ⑫ Choose the kind of file system (NTFS or FAT32) among the partition format.  
And click "Next"

- **Caution :** 1. The NTFS file system will be recognized only in " Windows 2000/XP".

If you want to use it with "Windows 98/ME", please choose "FAT32" system.

- 2. If you designate the file system as " FAT32" way in Windows 2000/XP, the drive word in over 32GB hard disk can not be one.

If you want to make the partition as "one", make partition and format in Windows 98/ME.

And also if you want to devide over 40GB hard disk into several partition, make it with "main partition(P)"

As the "expansion partition" can not be recognized, please make it with "main partition(P)"

⑬ After completing the "making partition magician", click "Finish"

⑭ It will be format automatically



## Please check when you have some troubles

### 1. Loss of data

Completing the disk slice assemble or checking the disk error with "precision", the data can bring a loss. Please avoid above operations.

### 2. Finding the message "HI-SPEED USB INSTALLATION is fixed incorrectly to HI-SPEED USB INSTALLATION herb"

It means the USB 2.0 product is connected to USB 1.1 Host Adapter on Windows XP.

USB 2.0 product(max. 480Mbps) is connected to USB 1.1 Host Adapter and it works

USB 1.1 speed(max. 12Mbps)

### 3. When you connect the product in your computer and if it is making a rattling sound, it means the lack of power.

Connect the offered USB power cable to the other USB port and then connect the power cable to FHD-255

(especially for using IBM HDD (1.0A) and HDD(Tosiba 0.7A) product ,sometimes can make lack of power.. In this case, please connect the USB power cable or power adapter)

## Specification

Model	<b>FHD-255</b>	
Interface	USB 2.0 (PL)	FireWire
Data transmission speed	480Mbps(Max)	400Mbps(Min)
Weight	with HDD : 185g	without HDD : 95g
Sdale	81.5mm x 129.5mm x 16.4mm	
Supply	Interface supply or adaptor	
OS requirement	Windows 98 SE/ME/2000/XP, Mac OS 8.6/9.x/X.x	