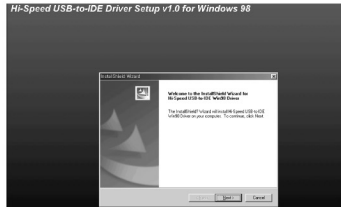


- 3) Completing "InstallShield Wizard"
then click "Next"

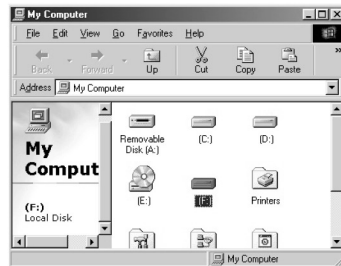


- 4) Coming out the message ""InstallShield Wizard Complete", click "Finish".
The driver will be installed



- 5) Connect the FHD-256 to the USB port in computer.

- 6) The drive icon will be installed in "my computer"



- **Caution** : The new hard disk which doesn't have FDISK and FORMAT, can not be recognized in "my computer"

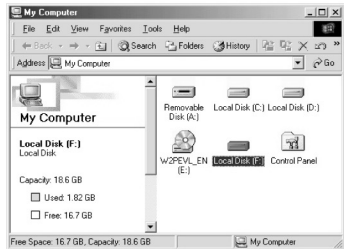
If you want to FDISK and FORMAT, you have to follow the way in "NO. 6 the way of PARTITION and FORMAT"

Then the drive will be installed in "my computer"

2. Windows ME

- 1) Connect the FHD-256 to the USB port in compute
- 2) Finding out the new hardware "USB Mass Storage Device", the driver will be installed automatically.

- 3) The drive icon will be installed in "my computer"



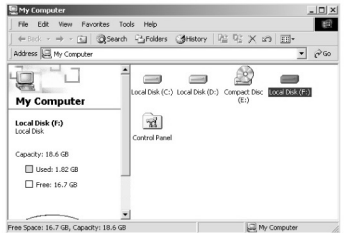
- 4) <usbntmap.sys.> etc..the files can be required.

The files are in the base2.cab in WIN9X folder in Windows ME original CD.

- **Caution** : The new hard disk which doesn't have FDISK and FORMAT, can not be recognized in "my computer"
If you want to FDISK and FORMAT, you have to follow the way in "NO. 6 the way of PARTITION and FORMAT"
Then the drive will be installed in "my computer"

3. Windows 2000/XP

- 1) Connect the FHD-256 to the USB port in compute
- 2) Finding out the new hardware "USB Mass Storage Device", the driver will be installed automatically.
- 3) The drive icon will be installed in "my computer"



■ **Caution** : The new hard disk which doesn't have FDISK and FORMAT, can not be recognized in "my computer"

If you want to FDISK and FORMAT, you have to follow the way in "NO. 6 the way of PARTITION and FORMAT"

Then the drive will be installed in "my computer"

4. MAC

For MAC OS 9.x or greater, the driver will be recognized without any other driver.

5. Checking the driver installation

Make sure if the driver is connected successfully on the OS position.

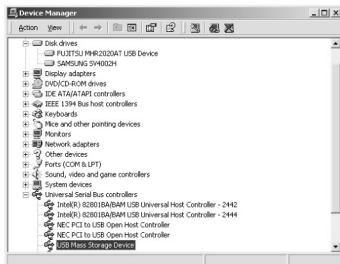
1. Windows 98/ME

Control panel -> System -> Device manager -> Universal series Bus Controller



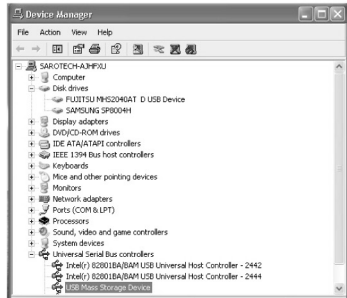
2. Windows 2000

Control panel -> System -> Hardware -> Device manager -> Universal series Bus Controller



3. Windows XP

Control panel -> System -> Hardware
-> Device manager -> Universal series
Bus Controller



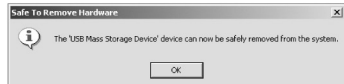
6. How to stop the product

If you want to stop separate the product when you are using it, please follow the below (Windows ME/2000/XP)

1) Click the "tray icon" under the "start"
and then you can find the below
drawing.



2) Choose it and read the message.
Separate the product from USB port



6. How to PARTITION and FORMAT

- **Caution :** You have to install the driver before making PARTITION and FORMAT.

1. Windows 98/ME

■ **The way to Fdisk and Format with new hard disk (with one drive)**

- ① Install the driver before connecting the product to computer.
- ② After Installing the driver -> start -> program -> click korean MS-Dos
- ③ Type "Fdisk" directly and press "Enter"
- ④ Finding the question "Will you use the big disk support function(Y/N)?"
Type "Y" and press "Enter"
- ⑤ Choose the "No.5 change the present hard disk" among the fdisk options.
- ⑥ Choose the last number in change the " hard disk drive" -> type the hard disk number of fdisk in " type the hard disk number" -> press "Enter"

- **Caution :** If you connect several hard disk, you could have wrong number.

Please choose the number that is 0% as the picture.

- ⑦ Press "Esc" -> choose the "No. 1 select the logic dos drive or partition" among the fdisk option items -> type "No.1" -> press "Enter"
- ⑧ Choose "No.1 basic DOS partition" among select the logic dos drive or partition --> type "No.1" --> press "Enter"
- ⑨ Just wait for the "no formation test"
- ⑩ After finishing the "no formation test" you can find the message "Will you use the whole capacity for basis DOS partition?" -> type "Y" -> "Enter"
- ⑪ Type the "needed capacity or %" directly and press " Enter"
- ⑫ After finishing the "no formation test" again, you can find the message "select basis Dos partition, the drive word is changed or added" then press "Esc" to return to Fdisk option.
- ⑬ Press "Esc" -> find the message " re-start the computer" -> press "Esc" again
- ⑭ If you find C:\> press " Exit" to return to Windows.
- ⑮ Separate the FHD-256 from the computer

- ⑫ Connect the FHD-256 to USB port in computer again
- ⑬ The "drive word" will be created in " my computer"
- ⑭ Choose the drive -> press the right side of Mouse and do the format (M)

2. Windows 2000

■ The way to Fdisk and Format with new hard disk (with one drive)

- ① Connect the product to USB port.
- ② Click "my computer" in the screen with the right side of Mouse -> choose management.
- ③ Choose "Disk management" among the computer management .
- ④ Coming out the Disk signature and up-grade magician, click "Next"
- ⑤ Coming out the disk you have to check and click "Next"
- ⑥ Finishing out the disk signature and upgrade magician, click "Finish"
- ⑦ Click the drive of "not allotted" in disk management with the right side of Mouse.
- ⑧ Choose the "making partition" among the menu.
- ⑨ After complete the "making partition magician" click "Next"
- ⑩ Checking if the "main partition(P)" is selected in kinds of partition, click "Next"
- ⑪ Type the needed capacity at "disk space" among the partition and click Next"
- ⑫ If the drive word is allotted, click "Next"
- ⑬ Choose the kind of file system (NTFS or FAT32) among the partition format. And click "Next"

- **Caution :** 1. The NTFS file system will be recognized only in "Windows 2000/XP".
If you want to use it with "Windows 98/ME", please choose "FAT32" system.
- 2. If you designate the file system as " FAT32" way in Windows 2000/XP, the drive word in over 32GB hard disk can not be one.
If you want to make the partition as "one", make partition and format in Windows 98/ME.
And also if you want to divide over 40GB hard disk into several partition, make it with "main partition(P)"
As the "expansion partition" can not be recognized, please make it with "main partition(P)"

- ⑭ After completing the "making partition magician", click "Finish"
- ⑮ It will be format automatically

3. Windows XP

Click "my computer" in the screen with the right side of Mouse -> choose management.

If you can not find "management" --> start --> Click "my computer" in the screen with the right side of Mouse

■ The way to Fdisk and Format with new hard disk (with one drive)

- ① Connect the product to USB port in computer.
- ② Click "my computer" in the screen with the right side of Mouse -> choose management
- ③ Choose "Disk management" among the computer management .
- ④ Coming out "start changing magician and disk initialization" --> choose "Next"
- ⑤ Finish to choose the initializing disk --> click "Next"
- ⑥ Coming out "Finish changing magician and disk initialization" --> click "Finish"
- ⑦ Click the drive of "not allotted" in disk management with the right side of Mouse and choose "New partition(N)"
- ⑧ After complete the "making partition magician" click "Next"
- ⑨ Checking if the "main partition(P)" is selected in kinds of partition, click "Next"
- ⑩ Type the needed capacity at "disk space" in partition size and click Next"
- ⑪ If the drive word is allotted, click "Next"
- ⑫ Choose the kind of file system (NTFS or FAT32) among the partition format. And click "Next"

- **Caution :** 1. The NTFS file system will be recognized only in "Windows 2000/XP".
If you want to use it with "Windows 98/ME", please choose "FAT32" system.
- 2. If you designate the file system as " FAT32" way in Windows 2000/XP, the drive word in over 32GB hard disk can not be one.
If you want to make the partition as "one", make partition and format in Windows 98/ME.

And also if you want to divide over 40GB hard disk into several partition, make it with "main partition(P)"

As the "expansion partition" can not be recognized, please make it with "main partition(P)"

⑬ After completing the "making partition magician", click "Finish"

⑭ It will be format automatically

7. Please check when you have some troubles

1. Loss of data

Completing the disk slice assemble or checking the disk error with "precision", the data can bring a loss. Please avoid above operations.

2. Finding the message "HI-SPEED USB INSTALLATION is fixed incorrectly to HI-SPEED USB INSTALLATION herb"

It means the USB 2.0 product is connected to USB 1.1 Host Adapter on Windows XP.

USB 2.0 product(max. 480Mbps) is connected to USB 1.1 Host Adapter and it works USB 1.1 speed(max. 12Mbps)

3. When you connect the product in your computer and if it is making a rattling sound, it means the lack of power.

Connect the offered USB power cable to the other USB port and then connect the power cable to FHD-256 (especially for using IBM HDD (1.0A) and HDD(Tosiba 0.7A) product ,sometimes can make lack of power.. In this case, please connect the USB power cable or power adapter)

Specification

Model	FHD-256	
Interface	USB 2.0 (PL)	
Data transmission speed	480Mbps(Maximum)	
Weight	with hard (185g)	without hard (95g)
Size	81.5mm x 130mm x 16.4mm	
Power	USB power or adapter	
OS Supported	Windows 98 SE/ME/2000/XP, Mac OS 9.x/X.x	

REV.1