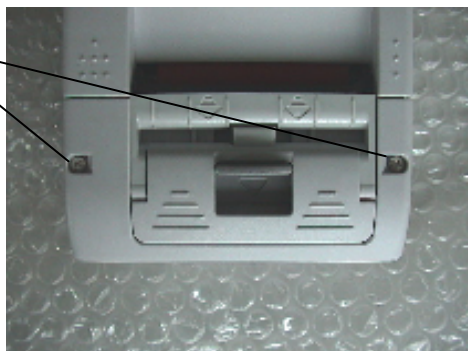
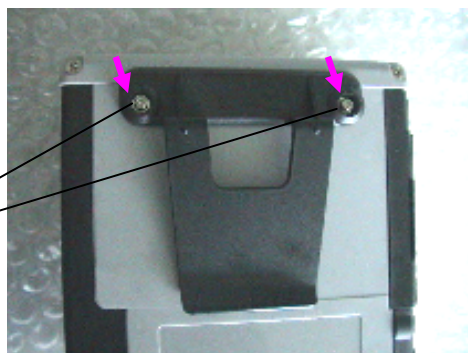


1 REMOVE CAP AND REMOVE SCREW.

CAP  
SCREW



CAP  
SCREW



SCREW

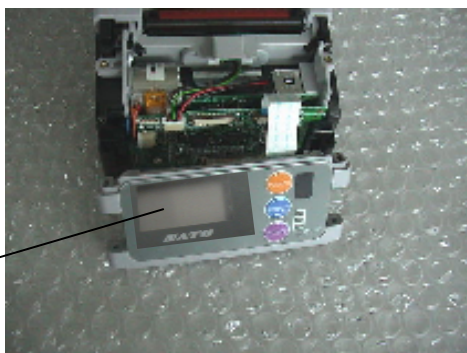


2 REMOVE SCREW AND REMOVE TOP COVER AND FRONT COVER.

TOP COVER

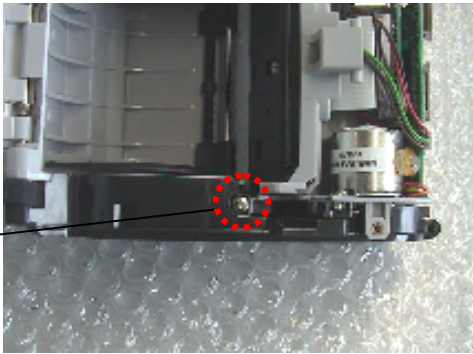


FRONT COVER

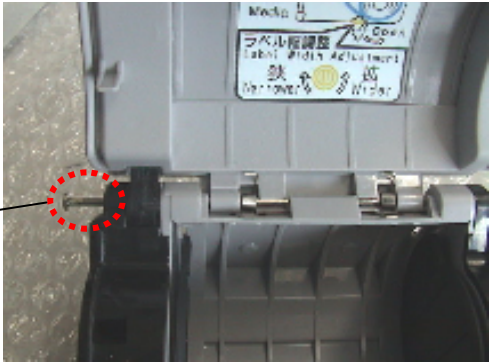


3 REMOVE SCREW AND REMOVE SIDE COVER.

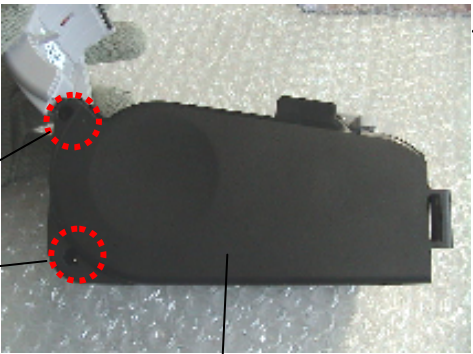
SCREW



※PULL OUT SCREW ABOUT 1cm.



SCREW

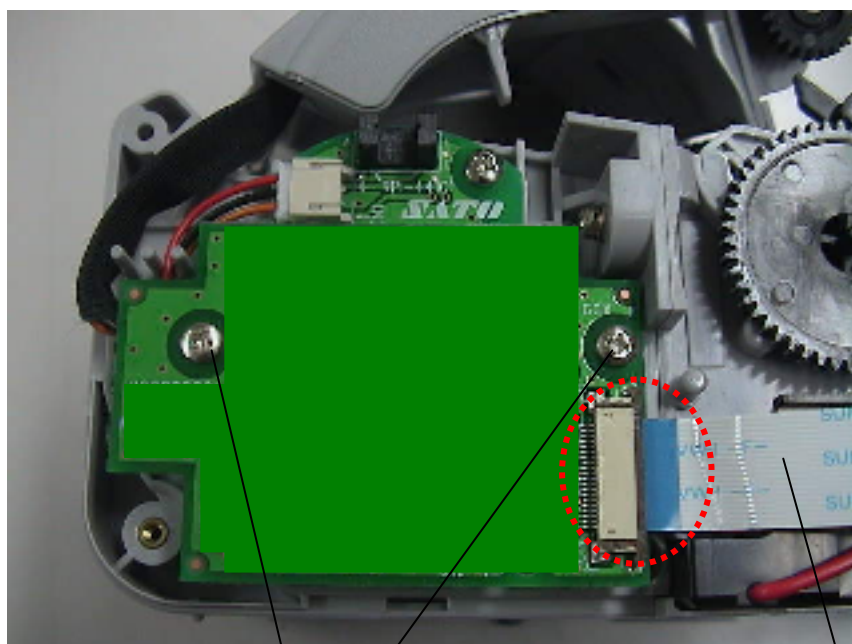


SIDE COVER

※ PULL OUT SCREW ABOUT 1cm.  
ROTATE SIDE COVER AS SHOWN FIGURE ABOVE  
UNTIL INSIDE CAN BE SEEN.

4 SET WLAN BOARD AND TIGHTEN THE SCREW.

FINALLY CONNECT FFC CABLE TO CONNECTOR AND LOCK THE CONNECTOR.



SCREW

FFC CABLE

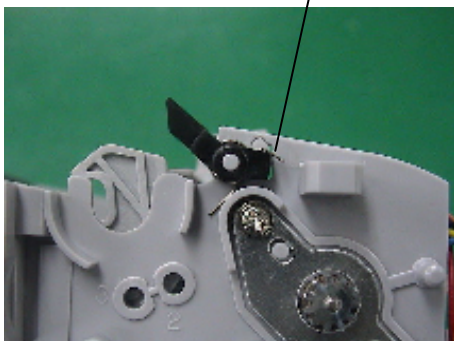
5 FOLLOW PROCEDURE 3→2→1 IN ORDER TO INSTALL BACK THE PRINTER.

※BEWARE AND MAKE SURE THE CABLE DO NOT STUCK WHEN PUTTING BACK SIDE COVER.

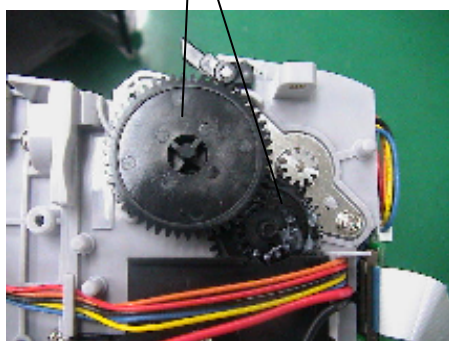


※(CASE PARTS ARE EASY TO COME OFF).

SPRING



GEAR



End Product Labeling  
The final end product must be labeled in a visible area with the following "Contains FCC ID : MMFSMP-WL".