



imagination at work

# Instructions and Setup

## Integrated Dimming

With integrated dimming you can control your lights without using an in wall dimmer switch. You can also set moods or scenes by connecting multiple lights to the same wireless remote.

Your Lutron® Pico® wireless remote is pre-paired to work with the GE telligent™ LED lamp with integrated dimming. See instructions to pair multiple lights with a single remote.

For more wireless remote set up and information on, tabletop pedestals, faceplates, and mounting adaptors, visit [lutron.com/picoremote](http://lutron.com/picoremote).

The GE telligent lamp will turn on to full brightness every time power is applied. For example, turning the lamp off then on with a light switch will turn the lamp on to full brightness.

## No Setup Required

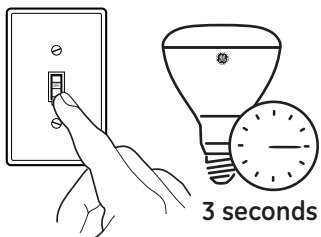
Remote and LED in package are pre-paired.

Simply keep the light switch on and remote will work at any time. The remote will not work if the light switch connected to the lamp is turned off.

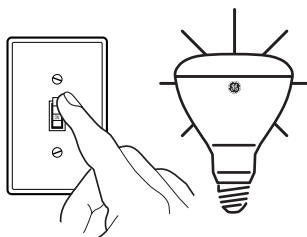
## OPTIONAL: How to control multiple light bulbs.

To pair additional telligent™ LED light bulbs with this remote control.

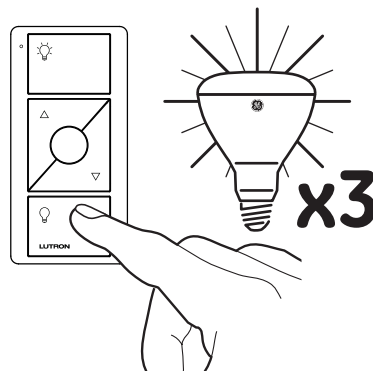
- 1** Turn off the light bulb with the light switch and wait 3 seconds.



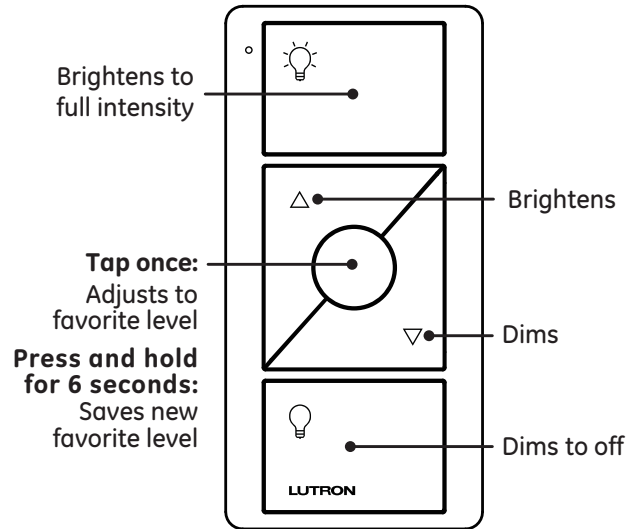
- 2** Turn on the light bulb with the light switch.



- 3** Immediately press and hold the bottom button on the remote control until the light bulb flashes 3 times.



Repeat these steps to pair additional light bulbs.  
Control up to 10 GE telligent™ LEDs with 1 remote.



**Remote Control**  
10-year battery life  
30 feet or more wireless range

## Programming of multiple Lutron Pico remotes with GE telligent™ LED lamps

Lutron Pico® remotes can be paired to any number of GE telligent™ LED lamps within range of the RF signal (at least 30 feet, through most walls and floors). All lamps will be controlled together by the paired Pico® remote. For Pico® remotes with a “Favorite” button, different paired lamps can be programmed to different levels to create a “scene”. This can be done by following a simple procedure:

1. Ensure all lamps are paired to the selected Pico® remote following the provided procedure.
2. Unscrew or turn off power to all but one paired lamp. Use the raise and lower buttons on the Pico® remote until the desired light level is reached for that lamp. Press and hold the Favorite button until the lamp acknowledges the light level is saved.
3. Unscrew or remove power from the just-programmed lamp, and apply power to the next lamp. Repeat the raise/lower/save procedure for the second lamp.
4. Repeat the procedure, applying power to one single lamp at a time and saving the light levels until all lamps have a Favorite light level saved.

When power is reapplied to all lamps, pressing the Favorite button will cause them all to go to their different saved levels.

Note: all lamps paired to a Pico® remote will go to a Favorite light level; lamps cannot have an “unaffected” Favorite level. Lamps can have different Favorite light levels for each paired Pico® remote.

## Un-pairing a Pico® remote from a lamp

Following this procedure will prevent the Pico® remote from controlling any lamps associated with it. Note that lamps must be powered on (but do not need to be turned on) and within wireless range. All programmed lamps should be powered on for at least 30 seconds before starting this procedure!

1. Press the Off button on the remote three times within one second.
2. Hold the Off button for five seconds, until the green LED on the Pico® remote turns on.
3. Press the Off button on the remote three more times within one second. Any associated lamps which are turned on and within range will no longer be controlled by the Pico® remote.

## Restoring a lamp to its factory default settings

This procedure will cause the lamp to no longer be associated with ANY Pico® remotes (including any that were factory-paired in the same package). A Pico® remote will need to be re-paired with a lamp before the lamp can be controlled again. All Favorite light levels will also be lost.

To restore a lamp to its factory-default settings, and clear all programming, follow the “Un-pairing a Pico® remote from a lamp” procedure within the first 30 seconds of a lamp powering up using an already-paired Pico® remote. If successful the lamp will flash three times, return to full brightness, and the Pico® remote will no longer control the lamp.