

**EXHIBIT H**

Operator's Manual for Savi Technology Model SaviTag 410

Savi Technology  
FCC ID: KL7-410T-V1

# SaviTag 410 Installation Guide

## Version 2.0

### Mounting the Tag

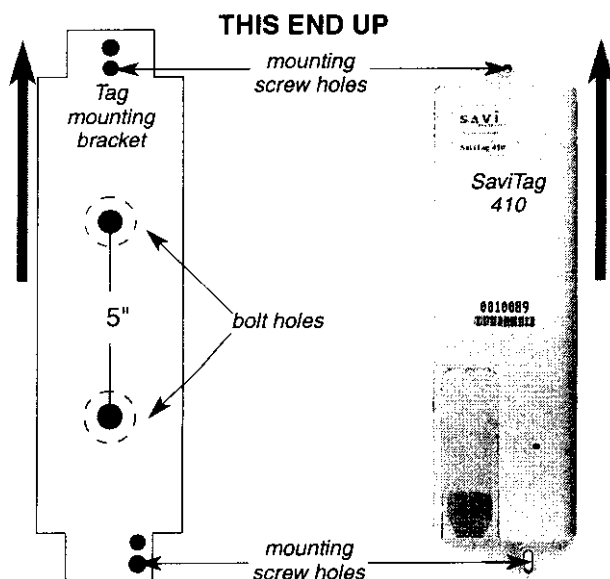
#### Tools and Materials

- marking pencil
- drill with #7 (.201) bit
- weatherproof sealant (any commercial RTV sealant)
- two 10-32 bolts, 0.75" long *plus the thickness of mounting surface*; #304 stainless steel
- two matching washers and nuts, #304 stainless steel
- adjustable wrench
- Phillips (cross-point) screwdriver
- two screws, 8-32, 1/2" (provided)
- 3.6V lithium battery, size AA (provided)

#### \* Note

Savi Technology recommends using bolts and nuts to install tag mounting brackets. Customers use other installation methods at their own risk.

The tag mounting bracket for a SaviTag 410 is 3.0 inches wide and 11.25 inches long. The tag is 8.75 inches long, 2.8 inches wide, and 1.5 inches high.

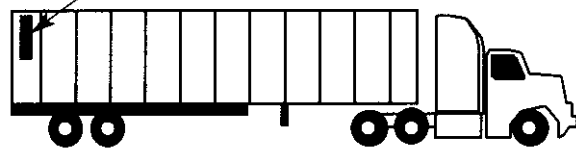


- Identify tag location: a flat, vertical space that can have a tag mounting bracket bolted to it. Place tags high for good radio communication and where they are safe from impact. Place tags vertically (labels upright), as shown below.

#### \* Note

On shipping containers, Savi recommends placing tags 1 foot by 1 foot from the top corner of container. For best range, mount tag outside container ribs.

mount SaviTag 410 vertically, outside ribs

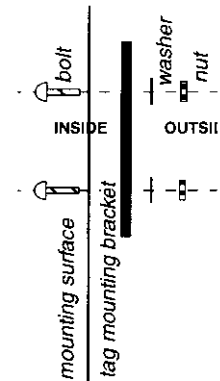


#### ! Caution

When working on a ladder, avoid dropping objects onto people below.

- Drill two holes 5" apart vertically; use tag mounting bracket for a template to mark holes.

- Install bolts with bolt heads inside mounting surface, as shown.



#### \* Note

Make sure bolt shaft does not protrude past top surface of mounting bracket. Protruding shaft can damage or interfere with attached tag.

- Seal bolt holes with sealant.
- Place tag mounting bracket, washers, and nuts onto bolts.
- Tighten nuts wrench-tight.
- Make sure the 3.6V lithium battery is installed properly in the tag (see other side).

#### \* Note

To confirm operation, tag will beep once when you install a charged battery.

- Fasten tag onto mounting bracket with the two 8-32, 1/2" screws provided. Do not over-torque.

Savi Technology  
FCC ID: KL7-410T-V1  
Operator's Manual



# Keep this document



# Replacing the Battery

## Tools and Materials

- replacement 3.6V lithium battery, size AA

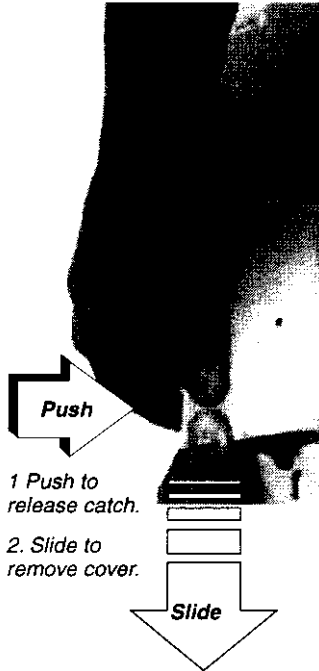
### ! Caution

When working on a ladder, avoid dropping objects onto people below.

- **Remove the battery cover:** push firmly against the grooved thumb plate to release the catch and slide the cover slowly down as shown.

### \* Note

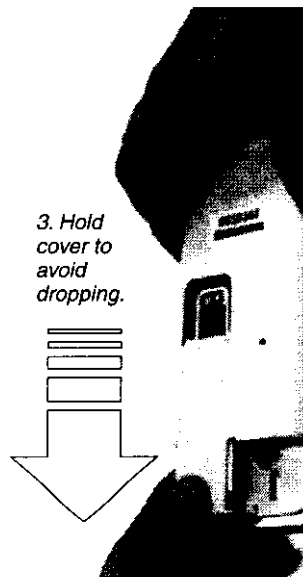
When removing the battery cover, hold it as it comes loose to prevent dropping it.



- **Remove the discharged battery** from its compartment.

### ! Caution

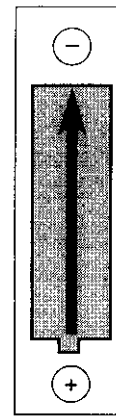
The lithium battery can be harmful to the environment. Please follow current procedures for safely disposing of lithium batteries.



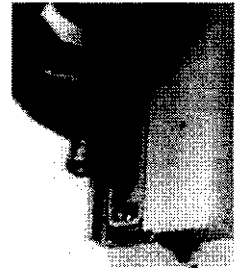
Copyright ©1997, Savi Technology Incorporated. All rights reserved. First edition printed September 1997.

Copyright protection claimed includes all forms and matters of copyrightable material and information, now allowed by statutory or judicial law or hereinafter granted. Information in this guide is subject to change without notice and does not represent a commitment from the vendor.

- **Install AA 3.6V lithium battery,** matching the negative (-) and positive (+) terminals to the symbols shown in the battery compartment.



THIS END UP



4. Place battery with negative end up and positive end down.

### \* Note

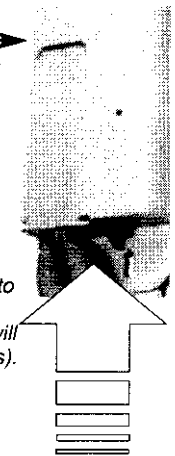
The tag will beep once when you install a charged battery. When removing and replacing a charged battery, you may need to wait a few seconds before replacing the battery in order to hear this confirmation beep.

- **Replace the battery cover** by sliding it into place until it fits flush with the tag case. Listen for the click as it seats.

### \* Note

Make sure that the battery cover is completely closed. You may need to open the rubber plug covering the docking port, close the battery cover, and then close the rubber plug again.

NOT COMPLETELY CLOSED



- **Dispose of used battery** according to local safety requirements.

5. Push firmly to close cover tightly (catch will click as it seats). Make sure no space shows around cover.

### \* Note

Tag does not work if you install the battery in the wrong direction (reversed).

**Problems?**

After you have tested that the SaviTag battery is working, and checked the *Savi System Installation Guide*, telephone Savi technical support at 1-888-994-SAVI (1-888-994-7284), between 9:30 a.m. and 5 p.m. Pacific Time or send e-mail to [help@savi.com](mailto:help@savi.com) at any time.

Savi order number DOC-2013

Savi part number 805-01460-001

Savi is a registered trademark and SaviTag is a trademark of Savi Technology Incorporated. Other product names mentioned in this guide may be trademarks or registered trademarks of their respective owners and are hereby acknowledged.

# SaviTag 410

## Federal Communications Commission (FCC) Notice

The Federal Communications Commission has established technical standards regarding radio frequency energy emitted by computer devices. This equipment has been tested and found to comply with the limits for a Class B digital device, pursuant to Part 15 of the FCC Rules. These limits are designed to provide reasonable protection against harmful interference in a residential installation. This equipment generates, uses, and can radiate radio frequency energy and, if not installed and used in accordance with the instructions, may cause harmful interference with radio/TV reception. However, there is no guarantee that interference will not occur in a particular installation. If this equipment does cause harmful interference to radio or television reception, which can be determined by turning the equipment off and on, the user is encouraged to try and correct the interference by one or more of the following measures:

- Reorient or locate the receiving antenna.
- Increase the separation between the equipment and receiver.
- Connect the equipment into an outlet on a circuit different from that to which the receiver is connected.
- Consult the dealer or an experienced radio/TV technician for help.



### Warning

*Changes or modifications to this equipment that are not expressly approved by Savi Technology could void the authority to operate this equipment.*

Savi Technology is not responsible for radio/TV interference caused by using unauthorized cable or by making unauthorized changes to this equipment.

## Federal Communications Commission (FCC) Label Statement

This device complies with Part 15 of the FCC Rules. Operation is subject to the following conditions:

1. This device may not cause harmful interference, and
2. This device must accept any interference received, including interference that may cause undesired operation.

The label statement corresponds to the following devices:

Device	Model	FCC ID
radio tag	ST-410-003	KL7-410T-V1
radio tag	ST-410-004	KL7-410T-V1
radio tag	ST-410-013	KL7-410T-V1
radio tag	ST-410-018	KL7-410T-V1
radio tag	ST-410-108	KL7-410T-V1
radio tag	ST-410-113	KL7-410T-V1
radio tag	ST-410-118	KL7-410T-V1

✉ Savi Technology  
450 National Avenue  
Mountain View, CA 94043-2238

☎ Phone: (650) 428-0550  
Fax: (650) 428-0444

✉ E-mail: [help@savi.com](mailto:help@savi.com)  
Web site: <http://www.savi.com/>