

Installation Guide

Savi ST-674 Sensor Tag



Published February 2009

Part number 805-05829-901 Rev A

Documentation for SaviTag ST-674

Copyright © 2009 Savi Technology, Inc. All rights reserved. Unpublished - rights reserved under the Copyright Laws of the United States.

EchoPoint, Savi, Savi SensorTag, Savi SmartChain, Savi SmartStart, Savi Technology, Savi's Nested Visibility, SaviTag, SmartChain, the EchoPoint Logo, and the Savi Logo are trademarks or registered trademarks of Savi Technology, Inc. in the United States and other countries.

Information in this manual is subject to change without notice and does not represent a commitment from the vendor. The software and/or databases described in this document are furnished under a license agreement or nondisclosure agreement. The software and/or databases may be used or copied only in accordance with the terms of the agreement. It is against the law to copy the software on any medium except as specifically allowed in the license or nondisclosure agreement.

THIS DOCUMENTATION CONTAINS CONFIDENTIAL INFORMATION AND TRADE SECRETS OF SAVI TECHNOLOGY, INC. USE, DISCLOSURE OR REPRODUCTION IS PROHIBITED WITHOUT THE PRIOR EXPRESS WRITTEN PERMISSION OF SAVI TECHNOLOGY, INC.

U.S. GOVERNMENT RIGHTS

Use, duplication or disclosure by the U.S. government is subject to restrictions set forth in the Savi Technology, Inc. license agreement and as provided in DFARS 227.7202-1(a) and 227.7202-3(a) (1995), DFARS 252.227-7013(c)(1)(ii) (OCT 1988), FAR 12.212(a) (1995), FAR 52.227-19 or FAR 52.227-14 (ALT III), as applicable. Savi Technology, Inc.

Other product names mentioned in this guide may be trademarks or registered trademarks of their respective owners and are hereby acknowledged.

Savi Technology.

351 E. Evelyn Avenue

Mountain View, CA 94041-1530

Phone: 1-650-316-4700

Facsimile: 1-650-316-4750

www.savi.com

Contents

Savi ST-674 Sensor Tag Description	5
Features	6
Activating the Tag	6
Initializing the Tag.	9
Placing the Tag for Best Performance	10
Mounting the Tag.	12
Replacing the Battery.	14
Contacting Savi Support	15
Specifications.	16

Savi ST-674 Sensor Tag Description

The Savi ST-674 tag is an active RFID tag for real-time tracking and environmental monitoring of sensitive, perishable items such as medical supplies, food stuff, and ammunition. The ST-674's sensors monitor and log environmental conditions, both temperature and humidity, of assets and their contents during transport and while in storage.

Figure 1: Front view

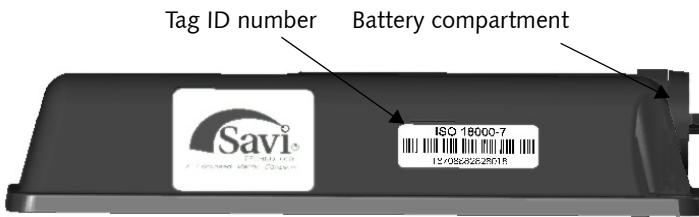
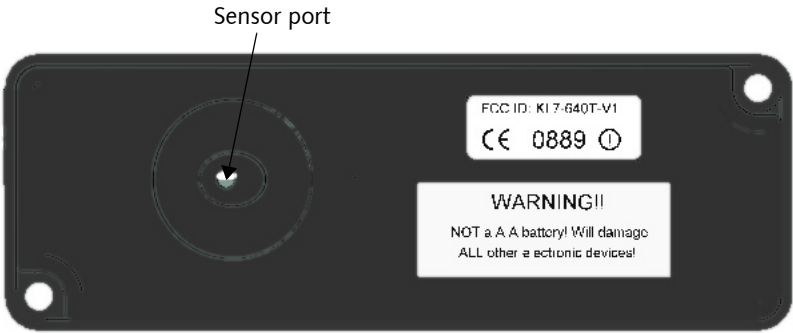


Figure 2: Rear view



Figure 3: Bottom view



Features

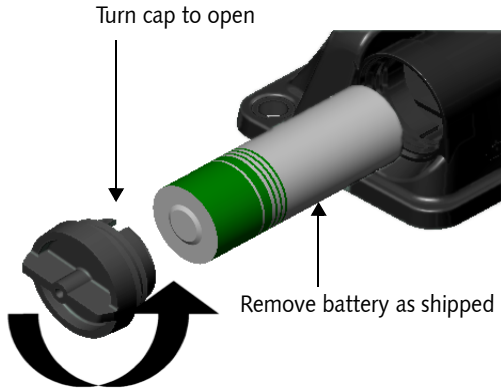
- ISO 18000-7 compliant active RFID tag with environmental sensor capability
- Ideal for tracking sensitive items such as medical supplies, food, and ammunition
- Supports low-frequency technology for more precise locating capabilities
- Supports USB for reading and writing
- FCC, HERO, ETSI, RoHS (Directive 2002/95/EC) certified

Activating the Tag

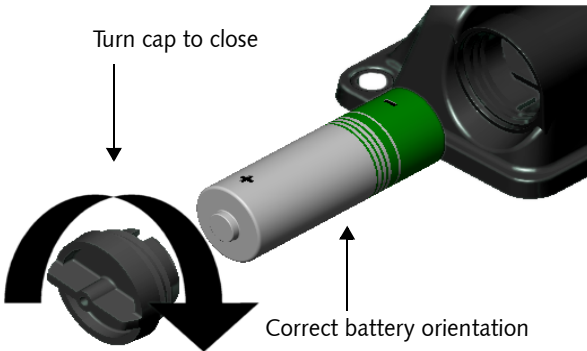
The tag is shipped in sleep mode. You must remove and re-insert the battery to wake up the tag. After you re-insert the battery, you can initialize the tag.

1. Remove the battery cap.

Activating the Tag



2. Remove the battery. Wait a few seconds and then reinsert the battery, matching the negative (-) and positive (+) terminals to the symbols shown on the tag housing. The tag will not work if you install the battery in the wrong direction (reversed).



Whenever a battery is inserted into a tag, the tag will emit 5 beeps.

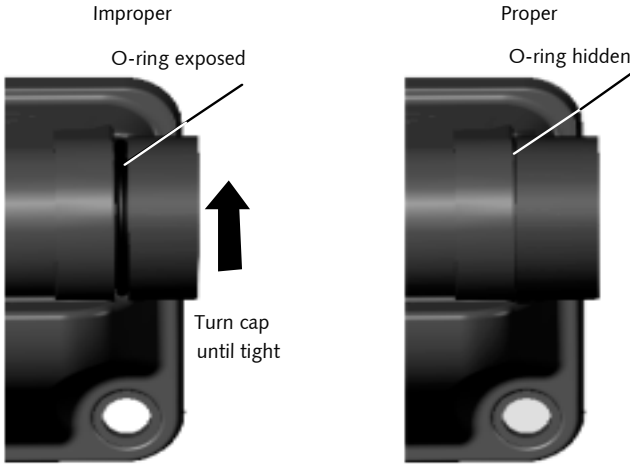
Savi ST-674 Sensor Tag Installation Guide

Then, if the tag emits a long (1/2 second beep), that means it has an internal sensor failure.

Then, the tag will emit 2 short beeps to indicate adequate battery voltage or 3 short beeps if a fresh battery is required.

Whenever a battery is inserted into a tag, the tag assumes that it is a fresh battery. Inserting a used battery into a tag may result in what appears to be a premature battery failure.

3. Replace the battery cap on the tag. **Continue tightening the cap until it is secure.**



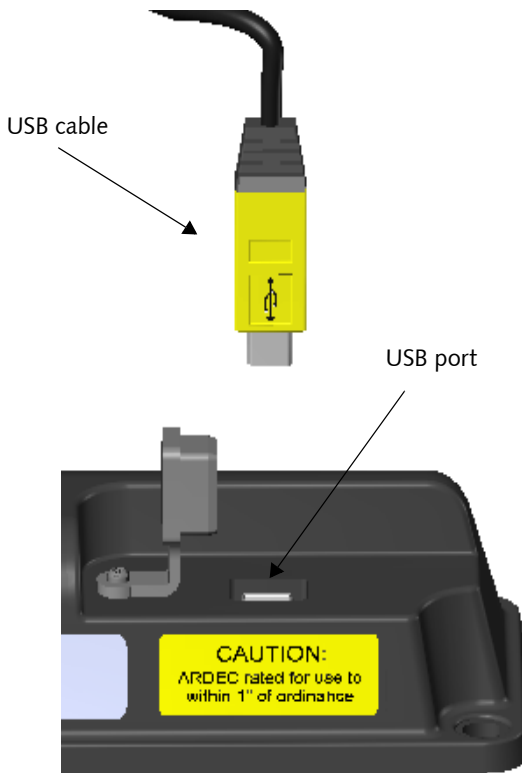
If the O-ring is not properly compressed by the cap, water leakage and damage may occur.

Note: When the tag is not in use, disable the tag by removing, reversing, and re-inserting the battery. Store the battery at room temperature (50-80 °F or 10-27 °C).

Initializing the Tag

Once you activate the tag, you can initialize it for immediate use.

1. Unplug the USB port cover.
2. Insert the USB cable into the USB port on the tag and connect the other end to the USB port on the computer.



3. Refer to the *Savi SmartChain Mobile User Guide* or the *Savi SmartChain WorkStation User Guide* for instructions on the initialization process.

Placing the Tag for Best Performance

Savi Technology recommends that you mount the tag on a flat surface, with the tag aligned vertically. For best performance, place the tag as high as possible, safe from impact (for example, between the ribs of an ISO-type shipping container), and away from obstructions on the asset.

Mount the tag by adhering the tag and supplied plastic mounting sleeve with pressure sensitive tape (PST) to the inside or outside of a Class VIII container or plastic, cardboard, or wood container or box.

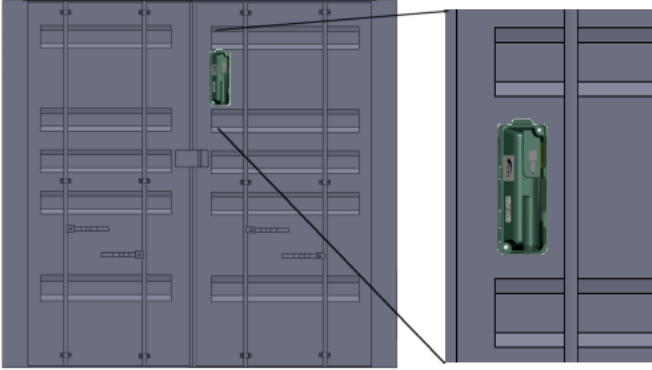
Typical locations include mounting the tag inside the middle of the container or on the outside of the container on a flat surface.

For best performance, make sure the tag is:

- Mounted on a metal surface.
- Mounted at no less than a 6 foot (1.8m) elevation.
- Mounted vertically.
- Not mounted behind or between metal objects
- Secured to the Optional Mounting Bracket to provide the minimum clearance to the asset (.575 inch or 1.5 cm)

Placing the Tag for Best Performance

Figure 4: Asset tag mounted on an ISO container door



Note: Make sure you clean the surface of the container or other asset before attaching the tag.

The tag will have 400-foot (122m) read/write range to Savi SR-650 Fixed Readers. For the most consistent communications with the tag, the Fixed Readers must be mounted:

- to have an unobstructed line-of-sight to the tag
- at 20 feet (6m) or higher

caution: Tags mounted close to the ground may have less range.

Follow the instructions in the Savi Fixed Reader documentation to locate and position the Savi Fixed Reader for best performance.

Mounting the Tag

You can choose among several mounting methods for the tag, including using pressure sensitive tape (PST) or a plastic mounting sleeve.

Whichever mounting method you select, the goal is to prevent accidental loss of the tag by sudden impact, vibration, or shock during transport. The fastener you choose often depends on the material from which the asset or container is constructed and your personal preference.

There are two accessory mounting packages, which are sold separately:

- Savi Mounting Kit STA-1260-Black, which includes PST
- Savi Magnetic Mounting Kit STA-1261-Black

You can also use the following alternative fastening methods:

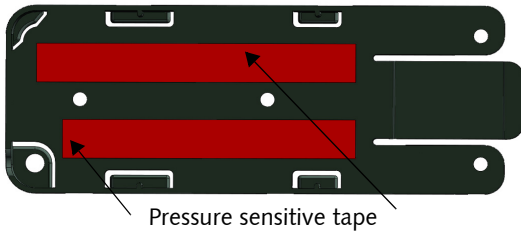
- Tie-wraps
- Twine
- Screws

caution: Use these and other alternative methods at your own risk.

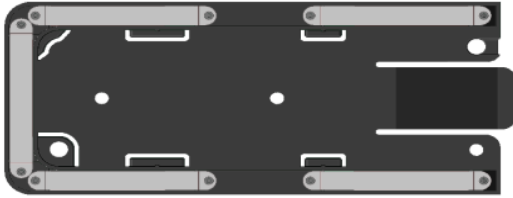
If it is not possible or practical to use screws, use PST to attach the tag. Use only 3M Corporation's Automotive Acrylic Plus Attachment Tape®.

For ease of installation, the tag comes with this PST on the back of the plastic mounting sleeve. PST mounting kits are also available for separate purchase.

Mounting the Tag

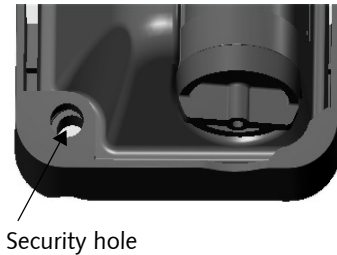


The magnetic mount clamps directly onto the metal surface. The magnets hold the tag securely, but allow the tag and the magnetic bracket to be removed quickly.



Once a mounting sleeve is fastened to an asset, you can leave it on the asset even after the tag is removed so it is available for future use with other compatible tags. Prior to re-use, visually inspect the PST-mounted sleeve to make sure it is attached securely. If necessary, reinstall the sleeve using new PST.

Asset tags and mounting sleeves have a security hole through which a nylon keeper band may be passed and tightened to secure the tag in place.



Replacing the Battery

The tag is equipped with non-volatile memory, which means stored data is not lost when you replace the battery.

1. Remove the battery cap.
2. Remove the discharged battery from its compartment.

For more information, see “Activating the Tag” on page 6. The lithium battery can be harmful to the environment. Follow current procedures for safely disposing of lithium batteries. The battery cannot be reused or recharged.

3. Install a 3.6V lithium "A" battery, matching the negative (–) and positive (+) terminals to the symbols shown on the tag housing. The tag will not work if you install the battery in the wrong direction (reversed).
4. Replace the battery cap on the tag.

Whenever a battery is inserted into a tag, the tag will emit 5 short beeps, one second apart.

Contacting Savi Support

Then, if the tag emits a long (1/2 second beep), that means it has an internal sensor failure. Remove the battery and insert it again. If the tag emits the same long (1/2 second) beep, do not use the tag.

Then, the tag will emit 2 short beeps to indicate adequate battery voltage or 3 beeps to indicate inadequate battery voltage. 3 short beeps means the tag needs a fresh battery.

Whenever a battery is inserted into a tag, the tag assumes that it is a fresh battery. Inserting a used battery into a tag may result in what appears to be a premature battery failure.

After the beep, continue tightening the cap until it is secure.

Contacting Savi Support

If you cannot find the information you need, contact Savi Support Services.

- Check <http://supportcenter.savi.com> for contact information.
- Send an email to help@savi.com.
- Call 1-888-994-SAVI (North America only) or 1-650-316-4760 between 5 a.m. and 5 p.m. Pacific time.

When you contact Savi Support Services by telephone or email, have the following information available:

- Contact information (company name, your name, email, and phone number)
- Problem description
- Software version
- Product type
- Serial number or license information

Specifications

Model Numbers	ST-674-030: Sensor tag ST-674-030-NSN: Sensor tag with label
Physical Characteristics	Dimensions: 6.2 in. (15.8 cm) x 2.1 in. (5.4 cm) x 1.1 in. (2.8 cm) Weight: 3.8 ounces (108g) Color: Black
Environmental	Temperature: -32°C to +70°C operating; -40°C to +85°C storage Humidity: 95% non-condensing Vibration and shock: MIL-STD-810F Weatherproofing: IP64 Manufacturing: RoHS Directive 2002/95/EC
Wireless (UHF Transceiver)	Frequency: 433 MHz Communication range (unobstructed): 400 ft. (122m) operating read/write range (outdoors, non-obstructed) from Savi SR-650 reader Protocols: ISO 18000-7, EchoPoint
Wireless (LF Receiver)	Frequency: 123 kHz Communication range: Greater than 20 ft. (6m) from SP-651-211 Signpost or SP-652-211 Signpost Reader Protocol: EchoPoint
Power	Battery type: 3.6 volt lithium, replaceable by user without tools Battery life: Approximately 4 years at 2 collections per day. Over-polling protection algorithm to extend battery life

Specifications

Digital	Sensor memory: 32 Kbytes on-board non-volatile memory Database memory: 128 Kbytes on-board non-volatile memory Wired interface: USB 1.1, USB 2.0
Accessories	Mounting: <ul style="list-style-type: none">• Pressure sensitive tape• Savi Mounting Kit STA-1260-Black (sold separately)• Savi Magnetic Mounting Kit STA-1261-Black (sold separately)
Approval	Radio Type Approval: FCC Part 15, EN 300 220 (433 MHz) EMC and Immunity: EN 301 489 Ordnance: HERO Certified, ARDEC rating of 1 in. (2.5 cm)
Environmental Sensors	Temperature: Senses and samples temperature with adjustable sample period and adjustable alarm thresholds Humidity: Senses and samples humidity with adjustable sample period and adjustable alarm thresholds
