



Vehicle Security Gateway

(ST-900-CF)

User Guide

Manufacturing plant :

Dae Kyung Philippines., Inc.

Lot No. 1-6, Block 20, Phase IV , Main Avenue,
PEZA , Rosario, Cavite 4106, Philippines

Manufacturer :

Savi Technology, Inc.

3601 Eisenhower Avenue, STE 280, Alexandria VA
22304
Tel : (571) 227-7950
Fax : (571) 227-7960

NOTICE

This manual, software and electronic circuitry are copyrighted. All rights reserved. Under the copyright laws, this manual, software and electronic circuitry may not be copied, in whole or in part without written prior consent of Savi Technology, Inc..

All information provided in this document is carefully prepared and offered in good faith as a guide in the installation, use and servicing of our products. Installers must ensure that the final installation operates satisfactorily within the relevant regulatory requirements. Savi Technology, Inc..accepts no responsibility for incorrect installation. Savi Technology, Inc.. reserves the right to change products, specifications and installation data at any time without notice.

Savi Technology, Inc.. makes certain limited warranties with respect to defective diskettes, documentation and electronic circuitry. Please see the associated information contained on this page.

LIMITED WARRANTY

With respect to the physical documentation and physical electronic circuitry enclosed herein, Savi Technology, Inc.. warrants the same to be free of defects in materials and workmanship for a period of one year from the date of purchase. In the event of notification within the warranty period of defects in material or workmanship, Savi Technology, Inc.. will replace the defective diskettes, documentation and electronic circuitry. The remedy for breach of this warranty shall be limited to replacement and shall not encompass any other damages including but not limited to loss of profit and special incidental, consequential, or other similar claims.

Savi Technology, Inc.. specifically disclaims all other warranties, expressed or implied, including but not limited to implied warranties of merchantability and fitness for a particular purpose with respect to defects in the documentation and electronic circuitry and the program license granted herein, in particular, and without limiting operation of the program license with respect to any particular application, use or purpose.

IMPORTANT SAFETY INFORMATION

RF EXPOSURE STATEMENT

Your Transmitter contains a radio frequency transmitter. When physical damage or un-lock is the transmitter sends our RF signals. To comply with FCC RF exposure compliance requirements, a separation distance of at least 11.81 inches (30 cm) must be maintained between the antenna of this transmitter and all persons, during normal operation.

The antenna used for this transmitter must not be collocated or operating in conjunction with any other antenna of transmitter. Unauthorized antennas, modifications, of attachments could damage the transceiver and may violate FCC regulations.

This device complies with part 15 of the FCC Rules. Operation is subject to the following two conditions: (1) This device may not cause harmful interference, and (2) this device must accept any interference received, including interference that may cause undesired operation.

FCC CAUTION

Changes or modifications not expressly approved by the party responsible for compliance could void the user's authority to operate the equipment.

This equipment has been tested and found to comply with the limits for a Class B digital device, pursuant to part 15 of the FCC Rules. These limits are designed to provide reasonable protection against harmful interference in a residential installation. This equipment generates uses and can radiate radio frequency energy and, if not installed and used in accordance with the instructions, may cause harmful interference to radio communications. However, there is no guarantee that interference will not occur in a particular installation. If this equipment does cause harmful interference to radio or television reception, which can be determined by turning the equipment off and on, the user is encouraged to try to correct the interference by one or more of the following measures:

- Reorient or relocate the receiving antenna.
- Increase the separation between the equipment and receiver.
- Connect the equipment into an outlet on a circuit different from that to which the receiver is connected.
- Consult the dealer or an experienced radio/TV technician for help.

NOTE : The manufacturer is not responsible for any radio or TV interference caused by unauthorized modifications to this equipment. Such modifications could void the user's authority to operate the equipment.

Table of Contents

About the Savi Security Sensor Family	5
Introduction.....	5
What's New?	5
Sensor Family and Components	6
Sensor Models	6
Specifications	7
Using the Sensors.....	8
Turning on the Mobile Security Parents and/or Child Sensors	8
Charging the Mobile Security Parent.....	8
LED Light Patterns	9
Journeys with a Mobile Security Parent Only.....	12
Creating the Journey.....	12
Arming the Mobile Security Parent	13
Journeys with One or More Mobile Security Child Sensors.....	16
Creating the Journey.....	16
Arming the Mobile Security Parent and Child.....	17
Troubleshooting	20
Replacing a Child Sensor	20
Maintenance.....	24
Cleaning Instructions.....	24
Replacing a Cable.....	24
Storing the Sensors.....	24

About the Savi Security Sensor Family

Introduction

The Savi Security Sensor Family provides users security and visibility while tracking high-value assets and cargo throughout their global supply chains. Savi Tracking is designed to provide users a seamless and complete view of the location and security status of in-transit assets and cargo.

With an in-house security sensor system that is purpose-built to integrate directly with Savi Tracking, we are able to provide users a powerful, low-cost, all-in-one tracking and security solution that is complete with encrypted data capabilities and two-way, over-the-air communication.

The Savi Security Sensor Family consists of two types of Parent Security Sensors and Child Security Sensors.

What's New?

The Savi Security Sensor Family features advanced, powerful sensors while being small, light, and convenient to handle. Our new, easy-to-use design features a built-in cable and a lock that secures with the push of a finger. The devices are already pre-configured to work seamlessly with our Savi Tracking software.

Sensor Family and Components

Sensor Models

Vehicle Security Gateway

Model No. ST-900-CF



Specifications

Vehicle Security Gateway,

ST-900-CF

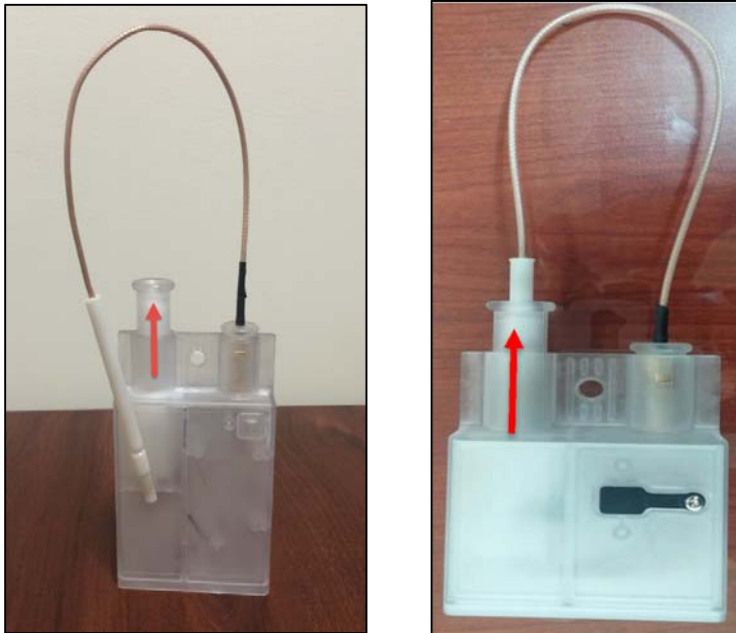
PHYSICAL	
LxWxH	<ul style="list-style-type: none"> 152 mm x 76 mm x 38 mm (excluding mounting tabs and external cable)
Weight	<ul style="list-style-type: none"> 0.36 kg
ENVIRONMENTAL	
Temperature	<ul style="list-style-type: none"> -30°C to +50°C Operating -40°C tp +70°C Non-Operating
Humidity	<ul style="list-style-type: none"> 95% RH @ 50°C Non-Condensing
Vibration and Shock	<ul style="list-style-type: none"> U.S. Military Standards 202G and 810F, SAE J1455
Weatherproofing	<ul style="list-style-type: none"> IP64
WIRELESS	
Frequency	<ul style="list-style-type: none"> 433 MHz(UHF) , 850/900/1800/1900 MHz ,
Protocol	<ul style="list-style-type: none"> ISO 18000-7 (Active RFID), Quad-Band GPRS
Location	<ul style="list-style-type: none"> 22-channel GPS with Cellular Triangulation Backup
POWER	
External Power	<ul style="list-style-type: none"> DC 24V / 2A
Backup Battery	<ul style="list-style-type: none"> DC 3.7V / 1400 mAh Li-polymer battery
REGULATORY APPROVALS	
RoHS Compliant	
EMC/EMI	<ul style="list-style-type: none"> SAE J1113, FCC-Part 15B, Industry Canada
Global Certifications	<ul style="list-style-type: none"> FCC, CE, I-SAFE (ATEX, IEC, UL913 Zone 1 Groups A,B,C,D)
SENSORS	
	<ul style="list-style-type: none"> 3-axis accelerometer
	<ul style="list-style-type: none"> Motion

Using the Sensors

Turning on the Mobile Security Parents and/or Child Sensors

For the Mobile Security Parent and Child Sensors:

To turn on the Mobile Security Parent and Child Sensors, pull the plungers up.



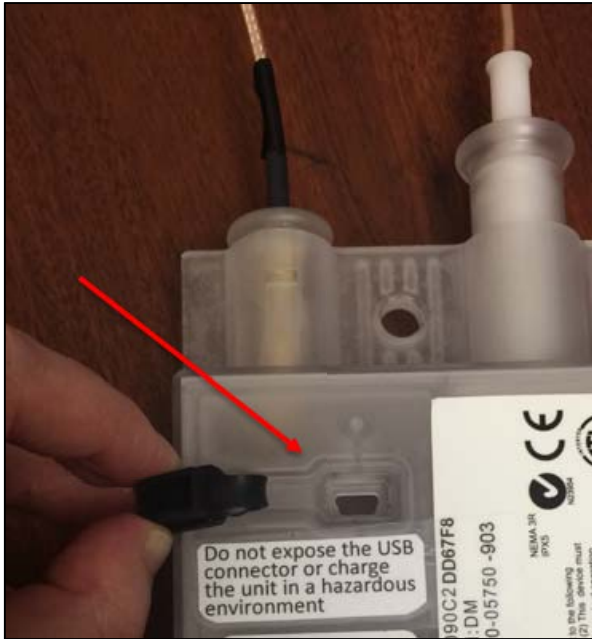
For the Vehicle Security Gateway:

Turn on the truck or vehicle ignition to turn on the sensors.

Charging the Mobile Security Parent

The Mobile Security Parent is rechargeable with a USB cable. Charge sensors using the Savi-approved Mini USB cable and charger by plugging it into an outlet that is connected to a power source.

Note: Mobile Security Child is not rechargeable. The Vehicle Security Gateway is recharged automatically once connected to the vehicle power.



LED Light Patterns

All Savi Security Sensors include a two-color red/green LED indicator that details various status conditions.

These LED patterns are defined below and should be used to assist in system operation and troubleshooting as necessary.

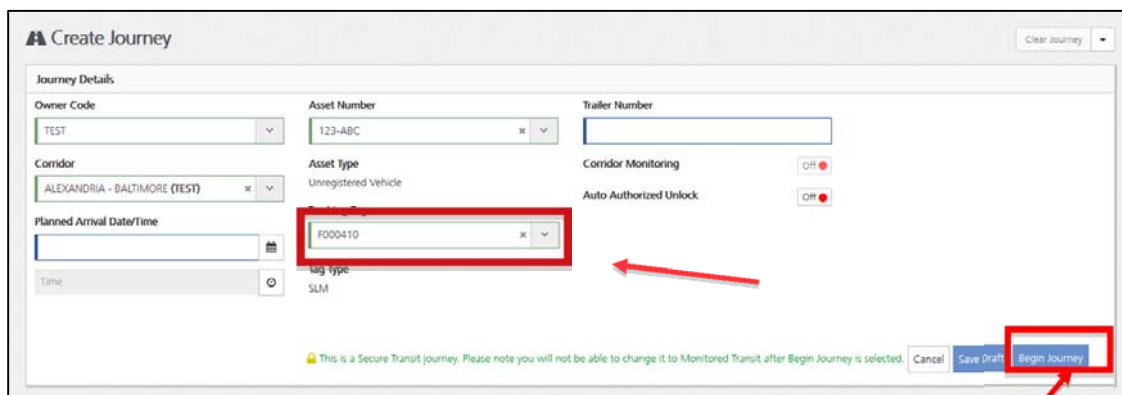
Parent Sensor LED Patterns

Initialization	Red	Red	Red	Red	Red	Red	Red	Red	Red	Red	Red	Red	Red	Red	Red
Low Battery Alert	Red	Red	Red	Red	Red	Red	Red	Red	Red	Red	Red	Red	Red	Red	Red
GSM Connection Good	Green	Green	Green	Green	Green	Green	Green	Green	Green	Green	Green	Green	Green	Green	Green
	Red	Red	Red	Red	Red	Red	Red	Red	Red	Red	Red	Red	Red	Red	Red
GPRS Connection Good	Green	Green	Green	Green	Green	Green	Green	Green	Green	Green	Green	Green	Green	Green	Green

Journeys with a Mobile Security Parent Only

Creating the Journey

1. Log into Savi Tracking.
2. Create a Journey by performing the following steps:
 - a. Select an Owner and Corridor from the drop-down list.
 - b. Enter the Asset Number.
 - c. Enter the Mobile Security Parent serial number in the “Tracking Tag” field.



The screenshot shows the 'Create Journey' form with the following details:

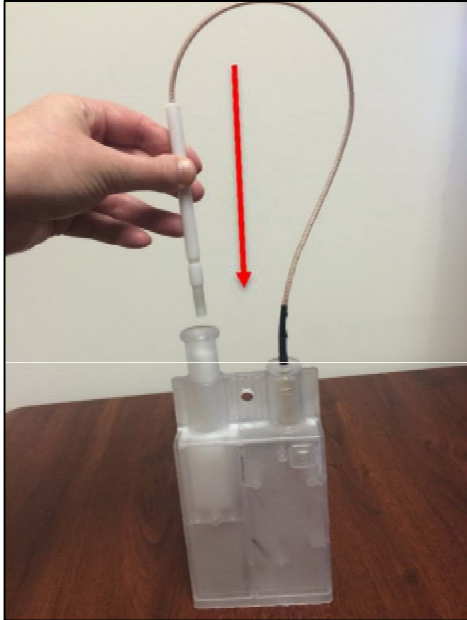
- Owner Code: TEST
- Corridor: ALEXANDRIA - BALTIMORE (TEST)
- Asset Number: 123-ABC
- Asset Type: Unregistered Vehicle
- Tracking Tag: F000410 (highlighted with a red box and an arrow)
- Trailer Number: (empty)
- Corridor Monitoring: OFF
- Auto Authorized Unlock: OFF
- Planned Arrival Date/Time: (empty)
- Time: (empty)
- Tag type: SLM

At the bottom of the form, there is a warning: "This is a Secure Transit journey. Please note you will not be able to change it to Monitored Transit after Begin Journey is selected." Below this warning are three buttons: Cancel, Save Draft, and Begin Journey (highlighted with a red box and an arrow).

- d. Click “Begin Journey” to indicate you are ready to arm tags.

Arming the Mobile Security Parent

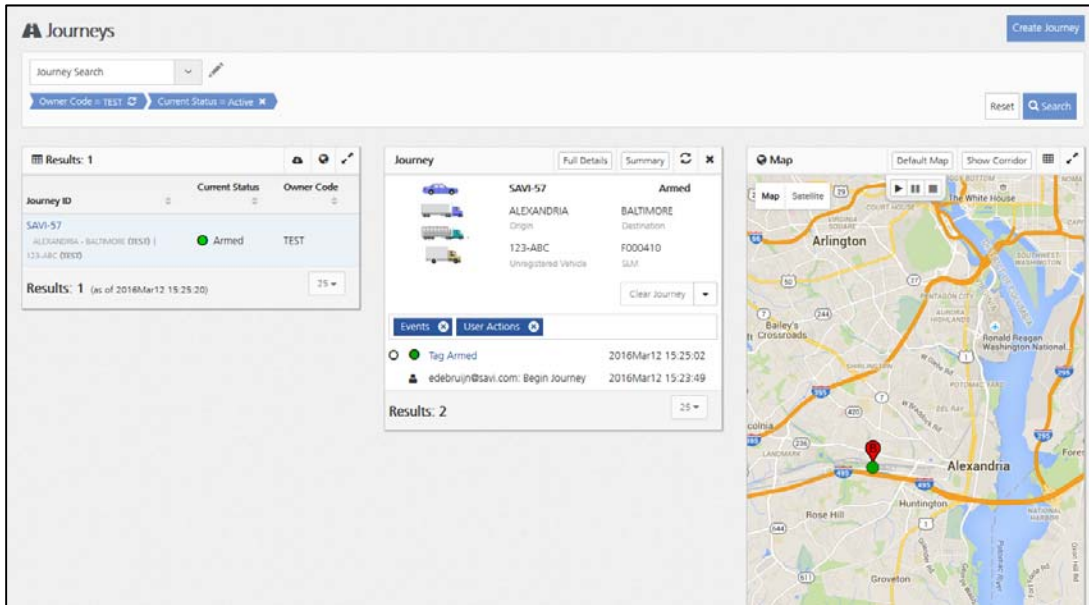
1. Turn on the sensor.
2. Loop the pin and cable through lock or door on container or vehicle.



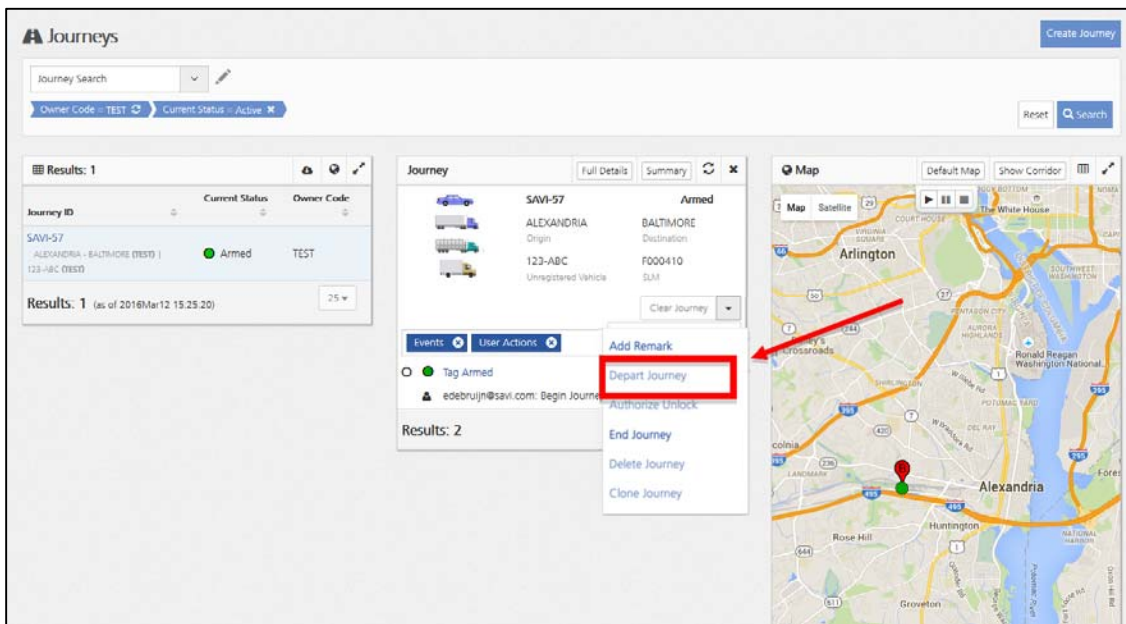
3. Push pin down into the plunger firmly until it clicks into place. Then push the plunger down to arm and lock the sensor.



- The green bullet will display in Savi Tracking to show that the Mobile Security Parent is armed and ready.



- Once the Mobile Security Parent is armed, select "Depart Journey" from the drop-down list.



6. The Current Status of the journey will change to "Secure Transit".

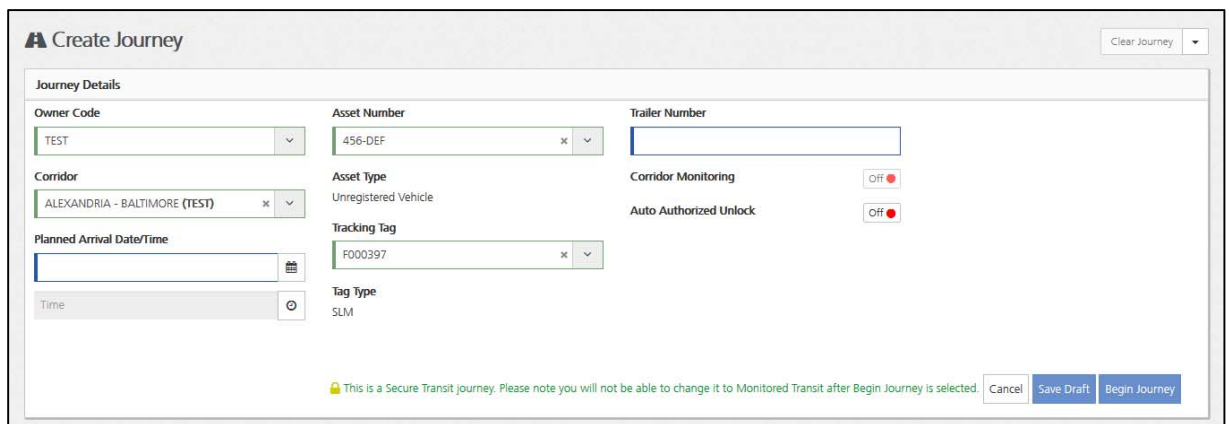
The screenshot displays the Savi Journeys web application interface. At the top, there is a search bar and navigation options. The main content area is divided into three sections:

- Results: 1**: A table showing journey details. The current status is "Secure Transit" for owner code "TEST".
- Journey**: A detailed view of the journey "SAVI-57" from "ALEXANDRIA" to "BALTIMORE". It includes vehicle information (123-ABC, Unregistered Vehicle) and a list of events: "Depart Journey" (2016Mar12 15:26:48), "Tag Armed" (2016Mar12 15:25:02), and "Begin Journey" (2016Mar12 15:23:49).
- Map**: A map showing the route from Alexandria to Baltimore, with a red pin indicating the current location in Alexandria.

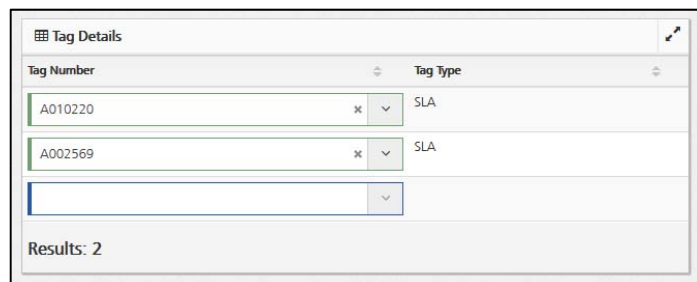
Journeys with One or More Mobile Security Child Sensors

Creating the Journey

1. Log into Savi Tracking.
2. Create a Journey by performing the following steps:
 - a. Select an Owner and Corridor from the list.
 - b. Enter the Asset Number. It is possible to either work with a registered asset or with a non-registered asset. If a registered asset is selected from the drop-down list, then the Tracking Tag field will automatically be filled in with the Vehicle Security Gateway serial number.



- c. When working with a non-registered asset, enter the Mobile Security Parent serial number in the “Tracking Tag” field.
- d. Scroll down to the Tag Details section and enter the Security Child Sensor IDs and Tag Point Names.



Tag Number	Tag Type
A010220	SLA
A002569	SLA

Results: 2

- e. When done, click Begin Journey.

Create Journey

Clear Journey

Journey Details

Owner Code: TEST
Asset Number: 456-DEF
Trailer Number:

Corridor: ALEXANDRIA - BALTIMORE (TEST)
Asset Type: Unregistered Vehicle
Corridor Monitoring: Off
Auto Authorized Unlock: Off

Planned Arrival Date/Time:
Time:

Tracking Tag: F000297
Tag Type: SLM

This is a Secure Transit journey. Please note you will not be able to change it to Monitored Transit after Begin Journey is selected.

Cancel Save Dis **Begin Journey**

Tag Details

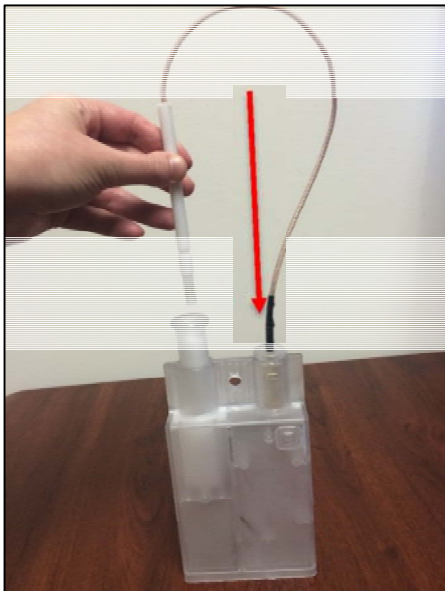
Tag Number	Tag Type
A010220	SLA
A002989	SLA

Documents

File Name	File Size	Description	Action
Documents cannot be added until the journey is Saved.			
Results: 0			

Arming the Mobile Security Parent and Child

1. Turn on the sensors; make sure the Parent and Child are in close proximity to each other. Verify LED lights for successful pairing.
2. To arm the both the Mobile Security Parent and the Mobile Security Child, loop the pin and cable through lock or door on container or vehicle.



3. Push pin down into the plunger firmly until it clicks into place. Then push the plunger down to arm and lock the sensor.



4. The green bullets will display in Savi Tracking to show that the Mobile Security Child Sensors are armed and ready.

Journeys Create Journey

Journey Search

Owner Code = TEST Journey ID = SAVI-58 Current Status = Active Reset Search

Results: 1

Journey ID	Current Status	Owner Code
SAVI-58 ALEXANDRIA - BALTIMORE (TEST) 456-DEF (TEST)	Armed	TEST

Results: 1 (as of 2016Mar12 15:44:15)

Journey Full Details Summary

SAVI-58 **Armed**

ALEXANDRIA BALTIMORE
Origin Destination

456-DEF F000397
Unregistered Vehicle SLM

Clear Journey

Events **User Actions**

Tag Armed	2016Mar12 15:43:38
Tag Armed	2016Mar12 15:43:29
Tag Armed	2016Mar12 15:42:28
edebrujn@savi.com: Begin Journey	2016Mar12 15:36:53

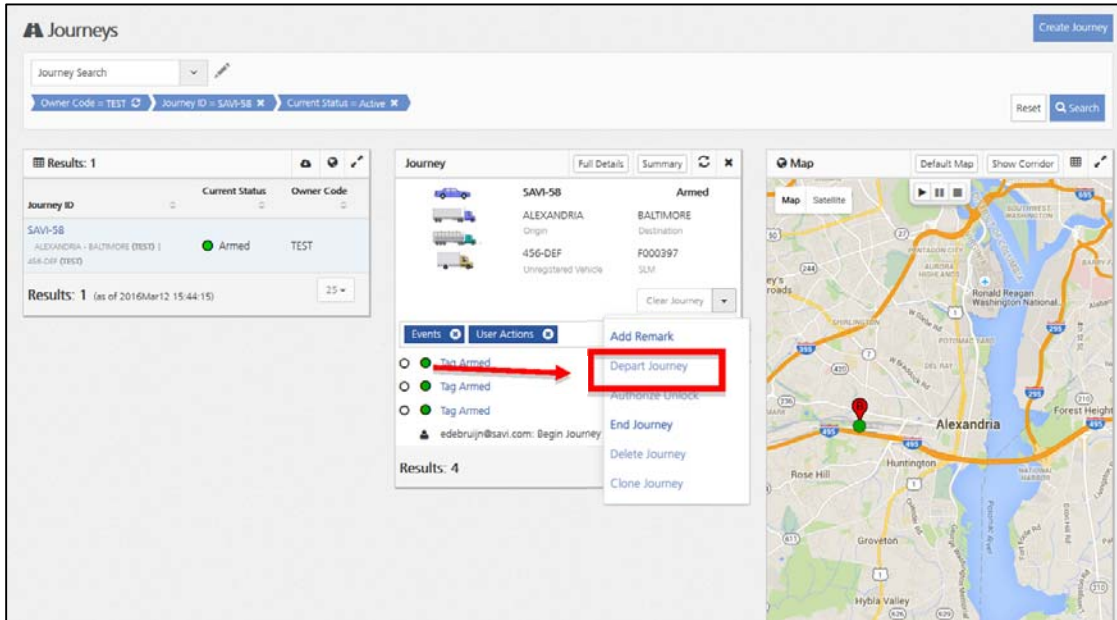
Results: 4

Map Default Map Show Corridor

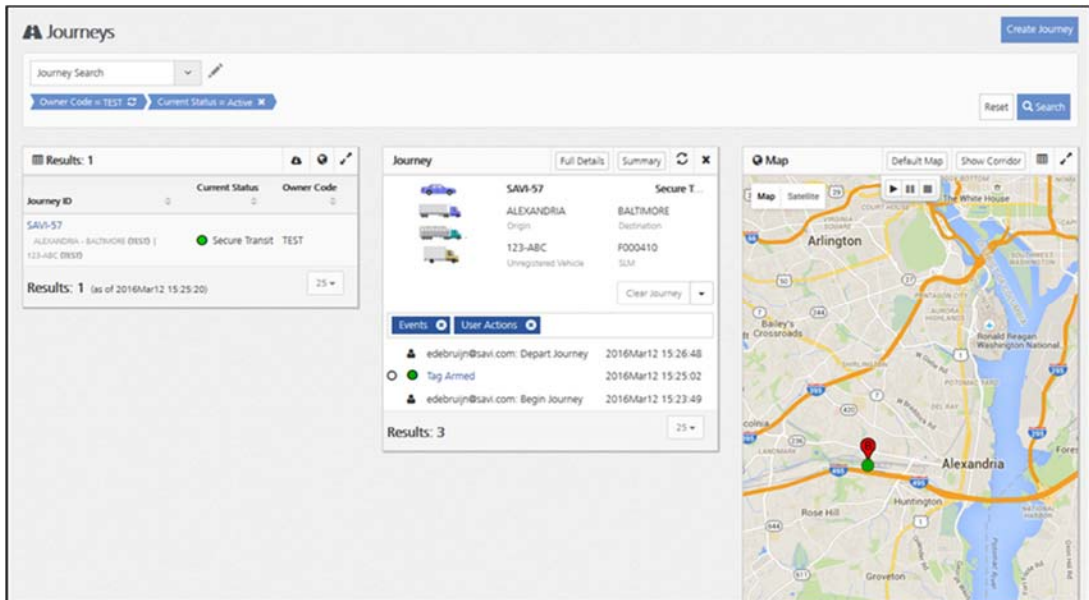
Map Satellite

Alexandria

- Once the Child Sensors are armed, select “Depart Journey” from the drop-down list.



- The Current Status of the journey will change to “Secure Transit.”



Troubleshooting

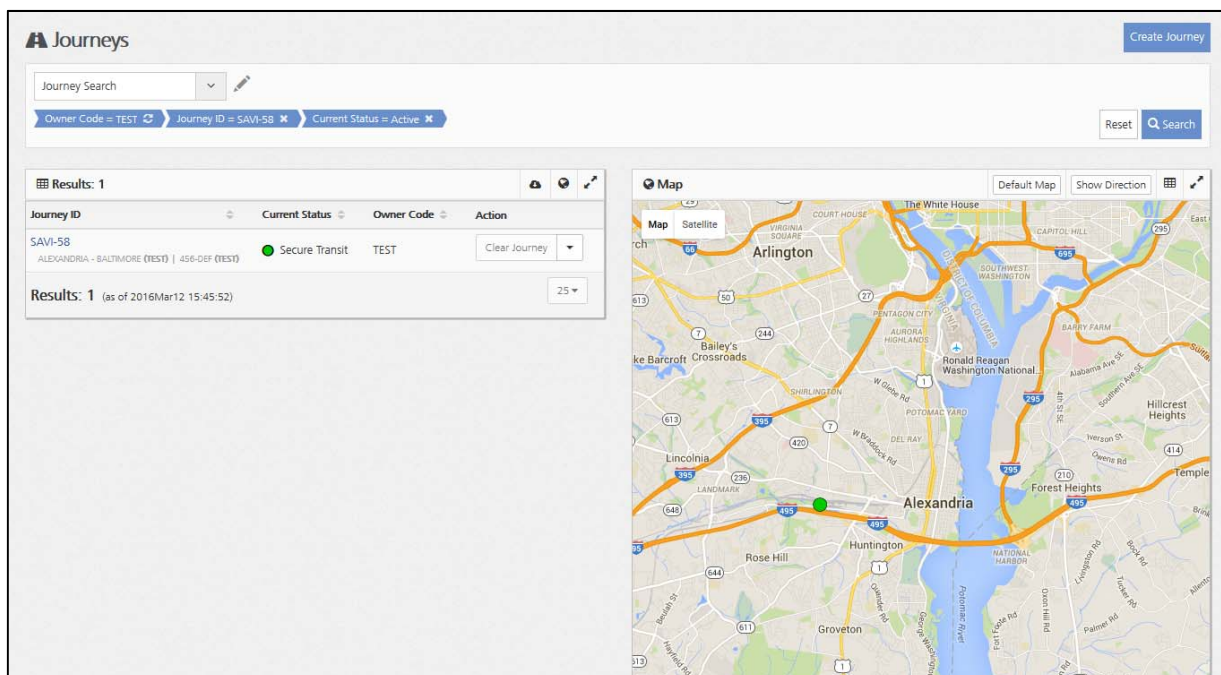
Replacing a Child Sensor

For various reason, it may be necessary to replace a Child Sensor on a journey, for example because:

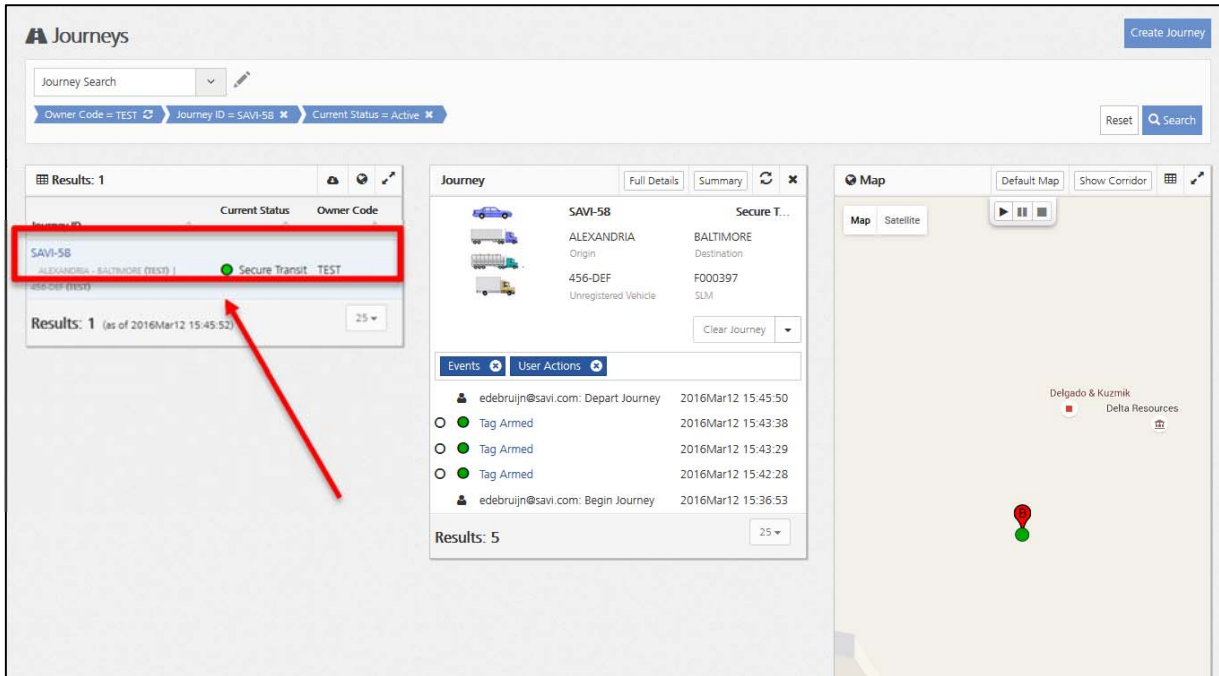
- The child sensor isn't pairing with the parent sensor
- The child sensor isn't arming
- The Child sensor has a low battery

To replace a Child Sensor on a journey, perform the following steps:

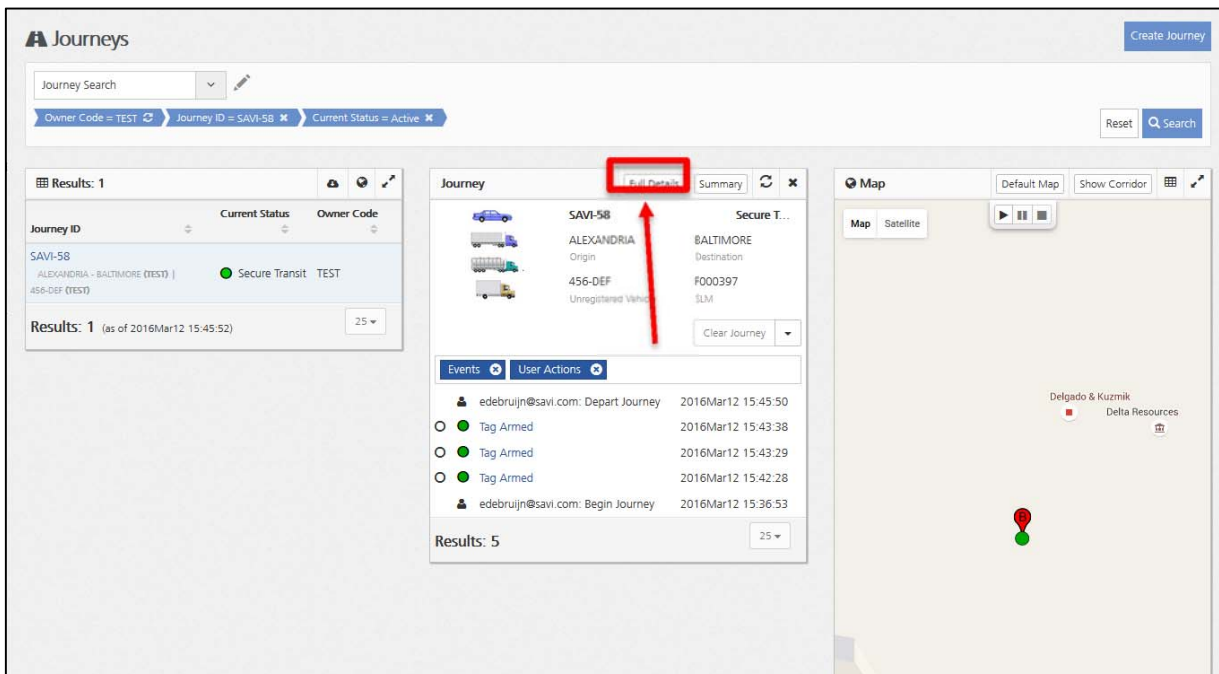
1. Search for the journey using the Journey screen.



2. Click on the journey to display the journey details.




3. Click on Full Details to display the full journey details.



4. Click pencil symbol to edit the journey:

SAVI-58 Secure Transit

Clear Journey Last Search

Journey Details 

TEST
Owner Code

456-DEF
Asset Number

-
Trailer Number

ALEXANDRIA to BALTIMORE (TEST)
Corridor

Unregistered Vehicle
Asset Type


OFF
Corridor Monitoring

Planned Arrival Date: 15:42:28 to BALTIMORE





F000397
Tracking Tag



OFF
Auto Authorized Unlock


SLM
Tag Type



 This is a secure journey.



History Tag Details Documents Checkpoints Grants Alert Settings



History Summary    

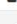
Events:  User Actions 


 edebruijn@savi.com: Depart Journey 2016Mar12 15:45:50



  Tag Armed 2016Mar12 15:43:38




  Tag Armed 2016Mar12 15:43:29

  Tag Armed 2016Mar12 15:42:28

 edebruijn@savi.com: Begin Journey 2016Mar12 15:36:53


Results: 5 


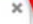
Map Show Corridor  

Map Satellite   

Delgado & Kuzmik
Delta Resources

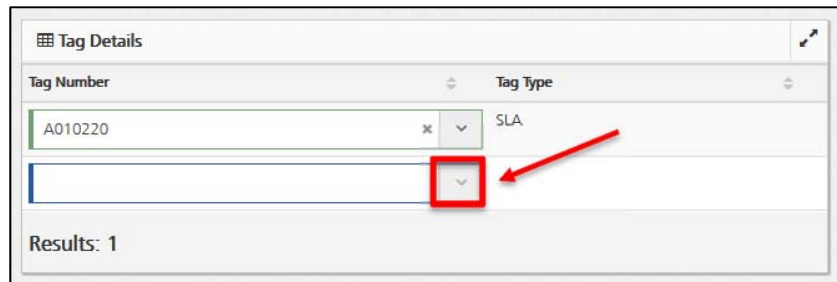
5. Delete the sensor that needs to be replaced by clicking on the "X" symbol next to it.

Tag Details 

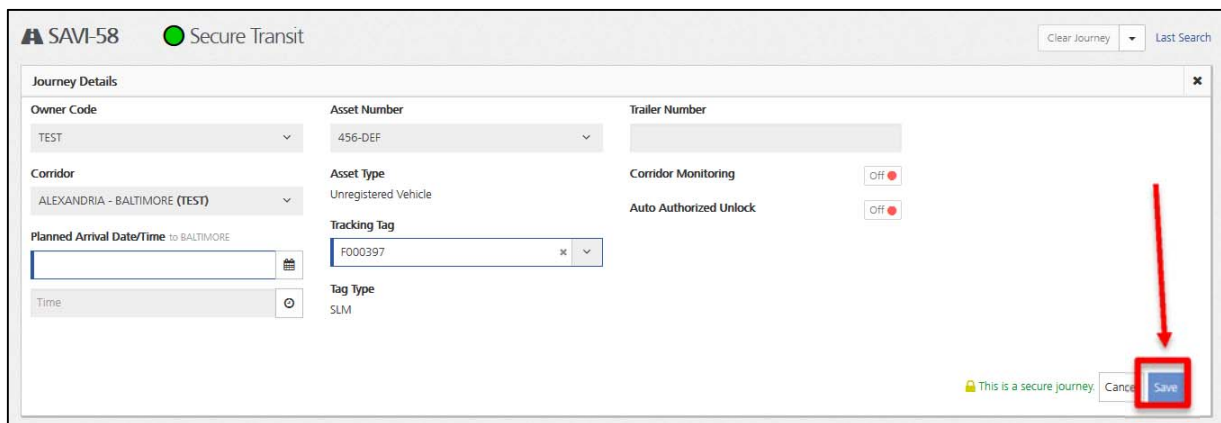
Tag Number		Tag Type
A010220		SLA
A002569		SLA

Results: 2

6. Add a new sensor by start typing the Child Sensor ID and selecting it from the drop-down list.



7. When done, click "Save"



Maintenance

Cleaning Instructions

TBD

Replacing a Cable

TBD

Storing the Sensors

TBD

Copyright © 2016 Savi Technology. All rights reserved.

Printed in the United States of America. All trademarks used are properties of their respective owners. This document is proprietary to Savi Technology. Do not reproduce, use or disclose without permission. We have made every effort to ensure the accuracy of all information contained in this document; however, Savi Technology makes no expressed or implied warranty or representation based upon the enclosed information.

