

Clarity - communications solution

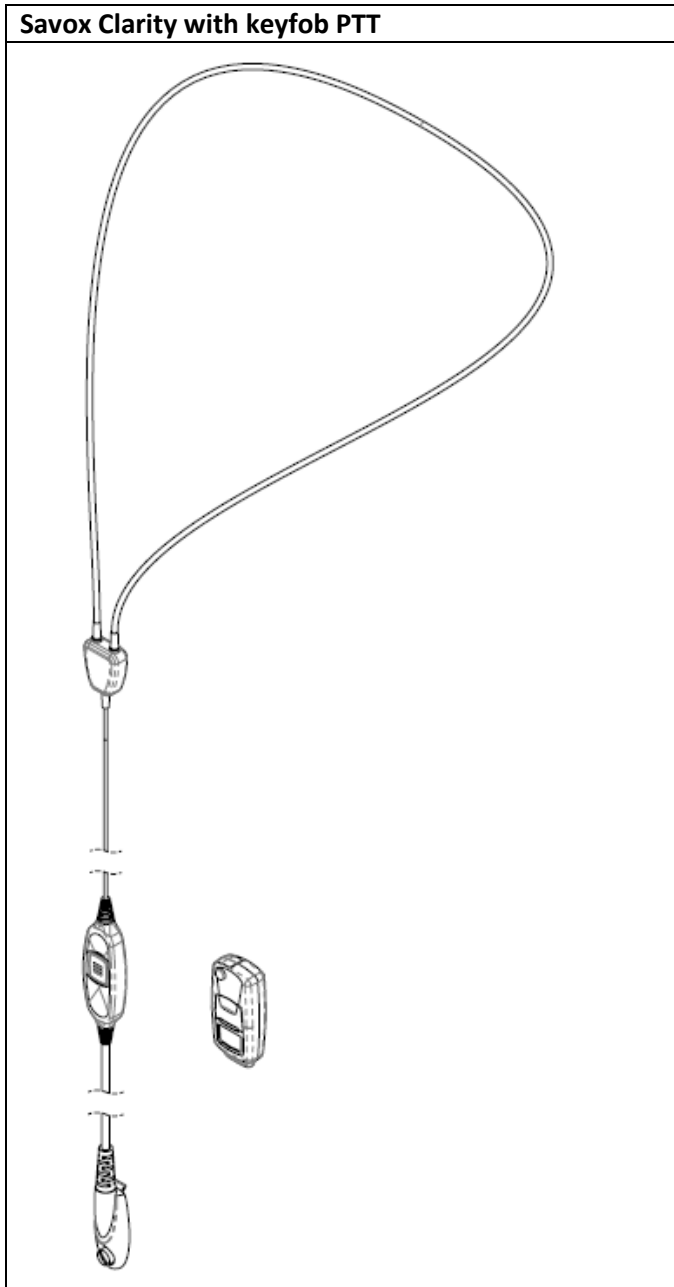


Image 1

Wireless PTT Pairing Procedure

The base unit can be paired with multiple types of remote units at the same time (e.g keyfob and handlebar wireless PTTs). The base unit is paired with a remote unit of each type by performing the procedure below.

Two remote units of the same type cannot be paired with one base at the same time. (eg. 2 keyfob remotes cannot operate a single base.)

Entry of base unit into pairing mode

When performing the pairing, the PTT will be activated on the radio and tones will be transmitted so a non-critical talkgroup should be selected. With the radio turned on, rapidly press the base unit PTT 3 times. This will put the base unit into pairing mode. The base unit will stay in this mode for 10 seconds. There will be no visual indication that pairing mode has been entered. Whilst the base unit is in pairing mode, the remote unit needs to be put into pairing mode.

Pairing with a remote unit

Press and release the PTT on the remote unit 3 times rapidly. If the remote and base detect each other, then the LEDs on the remote (if present) and base will come on for 5 seconds. This remote unit will then over-write any previous remote unit of the same type. This will not affect pairing of any other type of remote that has been previously paired with the base. If pairing fails, then the base keeps its current pairings.

N.B. During pairing, the air interface transmit power is reduced and so the base and remote units need to be within 20cm of each other. This is to reduce the possibility of cross pairing with another remote unit.

Replacement of battery in remote unit (see image 2)

The PTT uses a CR2032 coin cell battery. To exchange this, simply separate and replace as shown in the sequence below. Note do not use any metallic objects to remove the battery as this could cause damage.

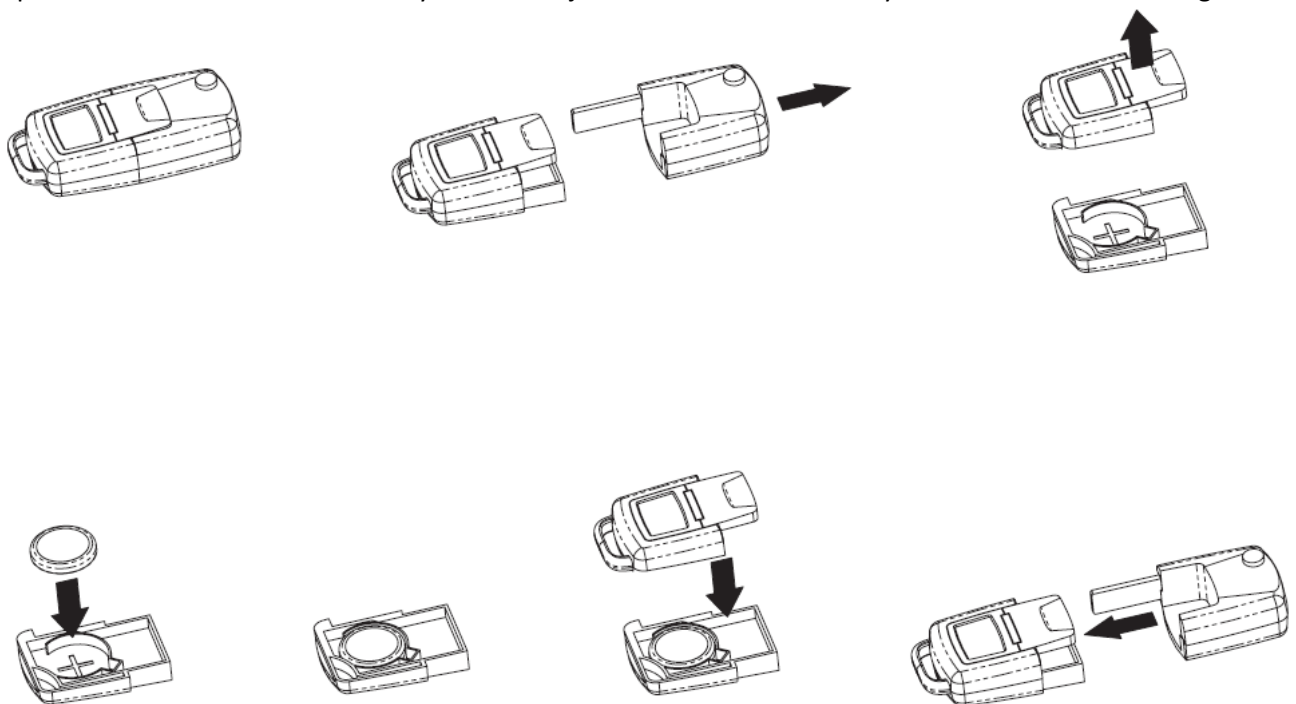


Image 3

Acoustic Protection

Exposure to loud noises from any source for extended periods of time may temporarily or permanently affect your hearing. The louder the radio's volume, the less time is required before your hearing could be affected. Hearing damage from loud noise is sometimes undetectable at first and can have a cumulative effect. To protect your hearing:

- Use the lowest volume necessary to do your job.
- Turn up the volume only if you are in noisy surroundings.
- Turn down the volume before adding a headset or earpiece.
- Limit the amount of time you use headsets or earpieces at high volume.

Warranty

Savox covert communications accessories are supplied with a 24 month return to base warranty. For further details on the terms and conditions please see www.savox.com

FCC warning statement:

- This device complies with Part 15 of the FCC Rules. Operation is subject to the following two conditions:
 1. This device may not cause harmful interference, and
 2. This device must accept any interference received, including interference that may cause undesired operation.
- This equipment complies with FCC radiation exposure limits set forth for an uncontrolled environment. End users must follow the specific operating instructions for satisfying RF exposure compliance.
- This transmitter must not be co-located or operating in conjunction with any other antenna or transmitter.
- Changes or modifications not expressly approved by the party responsible for compliance could void the user's authority to operate the equipment.