

Iqua for T-Mobile – Orsa Bluetooth® headset

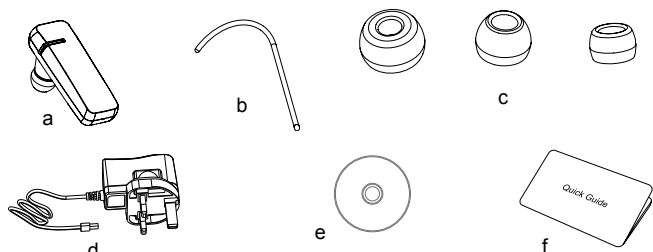


Quick Guide

Sales package content

Sales package contains the following items:

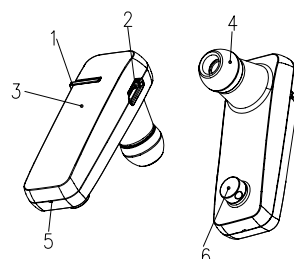
- Headset
- Earhook
- 3 ear plugs S, M, L (size S plug on headset)
- Mains charger
- Mini CD (user guide)
- Quick Guide



Overview of product

The headset contains the following parts:

- Multifunction button
 - Charging connector
 - Indicator light
 - Earpiece
 - Microphone
 - Earhook holder
- Power on/off, answer/end call
Status indicator with green and red LEDs



Call functions

Before you can start using the headset, you must first charge the battery and pair the headset with one compatible device. For the latest compatibility information please visit www.iqua.com.

Operation	Instruction
Power on	When the headset is powered off, press and hold the Multifunction button until the green light flashes once. (If the pairing list is empty, the product will automatically enter the pairing mode)
Power off	When the headset is powered on, press the Multifunction button until the red light flashes once and then turns off.
Pairing	When the headset is powered off, press and hold the Multifunction button until the green and red lights begin flashing alternately. Follow the instructions in the phone's user guide. Pass code is 0000. The device name displayed on the phone screen is "T-Mobile Orsa".
Making calls	Make a call from your mobile phone in the usual way. The call will be automatically connected to your headset.
Answering calls	Press the Multifunction button lightly; you will hear a tone once the call is answered.
Ending calls	Press the Multifunction button lightly; you will hear a tone when the call has ended.
Rejecting calls	Press the Multifunction button twice and you will hear a tone indicating that the call has been rejected.
Redialling the last dialled number (if supported)	Press the Multifunction button twice when no call is in progress; you will hear a tone when the redialled call begins.
Voice dialling (if supported)	Press the Multifunction button lightly. When you hear a tone, clearly enunciate the recipient's name/voice tag to activate the voice dialling function.
Volume control	Use your mobile phone's volume control to adjust volume.
Call waiting (if supported)	If you receive a new call during another call, press the multifunction button lightly to answer the incoming call and to put the current call on hold. You can switch between the two calls by pressing the multifunction button lightly. When you wish to end one of the calls and switch back to the other, press the Multifunction button twice.
Transferring calls (if supported)	To transfer an active call between the headset and your mobile phone, press the Multifunction button until you hear a tone and then release the button. The call is then transferred. Alternatively, follow the instructions in the user guide for your mobile phone's user guide to transfer calls.

Light indicators

The T-Mobile Orsa has red and green LED lights .

Power on / off	Green LED flashes once/ Red LED flashes once and then turns off.
Standby but no Bluetooth connection	Green LED flashes slowly
Connection active	Green LED flashes very slowly
Pairing mode	Green and red LED flash alternately
Battery charging	Red LED is on continuously
Battery charging complete	Red LED turns off and Green LED turns on



Federal Communications Commission (FCC) Statement

You are cautioned that changes or modifications not expressly approved by the part responsible for compliance could void the user's authority to operate the equipment.

NOTE: This device has been tested and found to comply with the limits for a Class B digital device, pursuant to part 15 of the FCC rules. These limits are designed to provide reasonable protection against harmful interference in a residential installation. This equipment generates, uses and can radiate radio frequency energy and, if not installed and used in accordance with the instruction manual, may cause harmful interference to radio communications. However, there is no guarantee that interference will not occur in a particular installation. If this device does cause harmful interference to radio or television reception, which can be determined by turning the equipment off and on, the user is encouraged to try to correct the interference by one or more of the following measures:

- Reorient or relocate the receiving antenna.
- Increase the separation between the equipment and receiver.
- Connect the equipment into an outlet on a circuit different from that to which the receiver is connected.
- Consult the dealer or an experienced radio/TV technician for help.

This device complies with Part 15 of the FCC Rules. Operation is subject to the following two conditions:

1. This device may not cause interference and
2. This device must accept any interference, including interference that may cause undesired operation of the device.

Radiation Exposure Statement:

This device complies with FCC radiation exposure limits set forth for an uncontrolled environment. End users must follow the specific operating instructions for satisfying RF exposure compliance. To maintain compliance with FCC RF exposure compliance requirements, please follow operation instruction as documented in this manual.

This device must not be co-located or operating in conjunction with any other antenna or transmitter.

DECLARATION OF CONFORMITY

We, Iqua Ltd., declare under our sole responsibility, that the product, BHS-318, conforms with the provisions of the following Council Directive: 1999/5/EC. A copy of the Declaration of Conformity can be found at http://www.iqua.com/declaration_of_conformity.

The Bluetooth word mark and logos are owned by Bluetooth SIG, Inc. and any use of such marks by Iqua is licensed. Other trademarks and trade names belong to their respective owners.

Under no circumstances does Iqua assume any liability for loss of or damage to or corruption of data, for any loss of profit, loss of business, revenues, contracts, anticipated savings increased costs or expenses or for any indirect, special, incidental or consequential damages howsoever caused.