

The 5500 series lock is a stand-alone, microprocessor controlled, electromechanical locking system. The 5500 employs a heavy-duty mechanical design with fewer moving parts than a standard mechanical mortise lockset, for ease of installation and high reliability. It is powered by four, standard AA batteries, providing up to 80,000 activations.

Operationally, the outside lever is normally locked and the inside lever always retracts the bolt to allow egress. Electronic access control is achieved by entering an "Access Credential" (magnetic stripe card, code of iButton Key, or HID Prox fob or card). Electronic access control capabilities are listed below by model. All models are designed to accommodate an emergency mechanical key override. Standard features of the CM models include up to 1000 user memory, real time features including time zones and holidays, and audit trail of up to 1000 events. Optional ATK (audit trail - key override) will note any use of the mechanical key on the audit trail report. Manual and computer programming is supported by all models. The PRO models are manually programmed to accept up to 100 codes.

### Functions:

**5590:** Office Function (3/4" latch) - has "Lock" and "Unlock" buttons on inside escutcheon. Function not available on PRO

**5596:** Storeroom/Classroom Function (3/4" latch) - can be unlocked by "toggle" credential and relocked again by same. See programming guide for more information (form 57000).

**5598:** Classroom Function with inside iButton reader - can be toggled unlocked by iButton plus pin (code). Can be relocked immediately from inside iButton reader in an emergency.

**5591:** Office Function (1" Autobolt) - has "Lock" and "Unlock" buttons on inside escutcheon. Function not available on PRO

**5594:** Storeroom/Classroom Function (1" Autobolt) - can be unlocked by "toggle" credential and relocked again by same. See programming guide for more information (form 57000). Function not available on PRO

**5593:** Dormitory/Privacy Function (1" Autobolt) - Pushing either button on the inside escutcheon places lock in the "Privacy" mode: a "Lockout" credential or mechanical key is required to enter. Condition is cleared when the bolt is retracted from the inside. Function not available on PRO

### Models:

**KPI:** iButton reader and keypad

**IBO:** iButton reader only

**MGK:** Magnetic stripe card reader, iButton reader and keypad

**MGI:** Magnetic stripe card reader and iButton reader

**PXK:** Prox card reader, iButton reader, and keypad

**PXI:** Prox card reader and iButton reader

**PRO:** Keypad only - Manual programming only, 100 code memory

### Options:

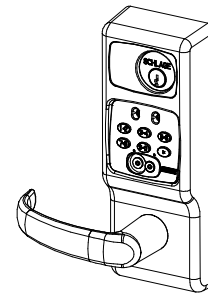
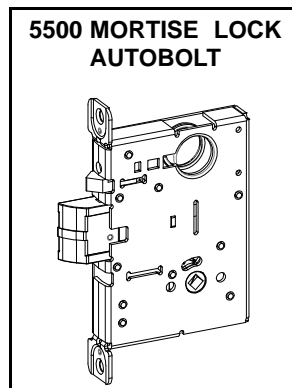
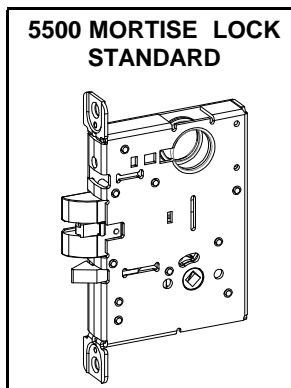
**ATK:** Audit trail of mechanical key use (not available on PRO)

**HSS:** High security screws on inside escutcheon

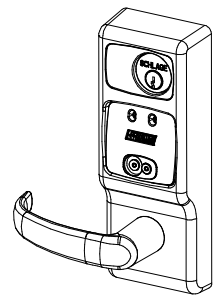
**T3:** Track 3 card reader (data must be ABA track 2 format) - MGI/MGK only

**KD:** Keyed Different, includes Schlage Everest cylinder

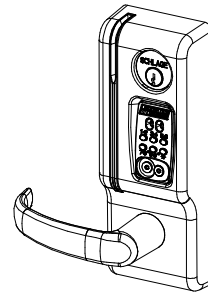
**LC:** Less Cylinder



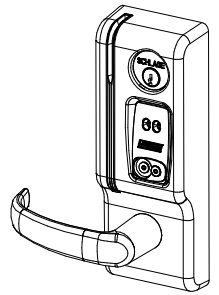
**CM5500-KPI**



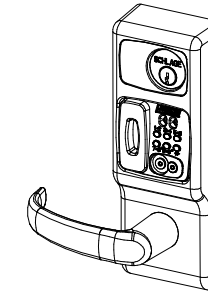
**CM5500-IBO**



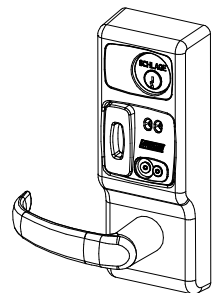
**CM5500-MGK**



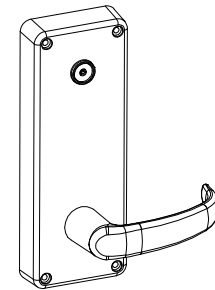
**CM5500-MGI**



**CM5500-PXK**

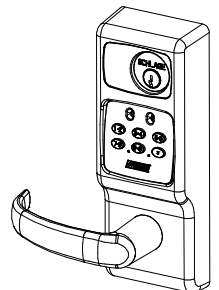


**CM5500-PXI**



**CM5598**

**SAFE SCHOOL LOCK  
WITH iBUTTON  
READER ON INSIDE**



**PRO5500**



## BEFORE YOU BEGIN:

Standard units are shipped from the factory to fit 1-3/4" doors. Verify the door thickness. If the door is not 1-3/4" thick, verify that the door thickness option was ordered or consult factory.

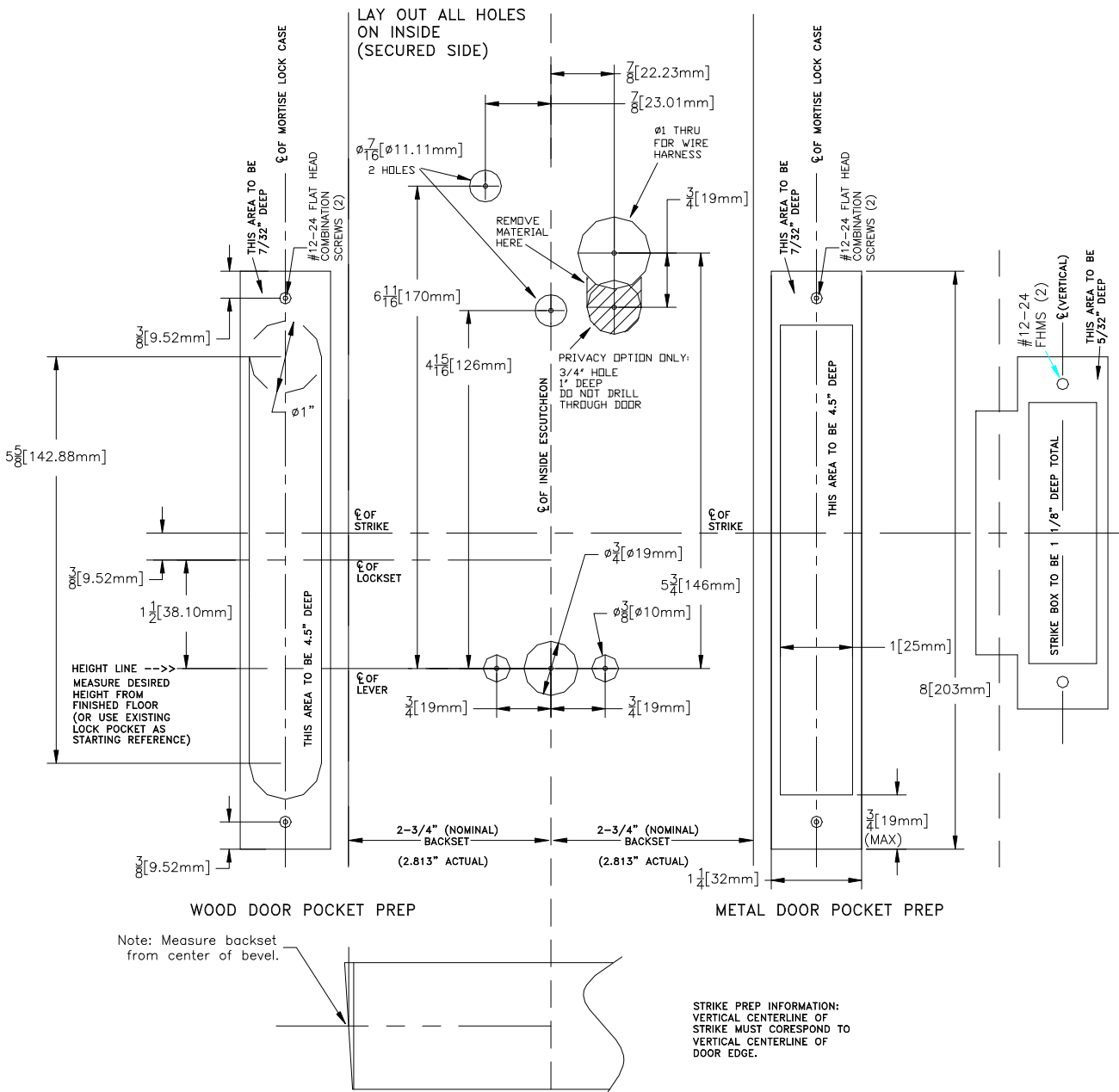
## 1. PREP DOOR AND FRAME (IF NOT ALREADY DONE):

A. Determine door hand.

B. Mark the horizontal and vertical centerlines for the lock case (on door edge), strike, lever, and inside escutcheon. Note that the backset is actually 2.813" (or 2 13/16"). This is very important for proper mounting.

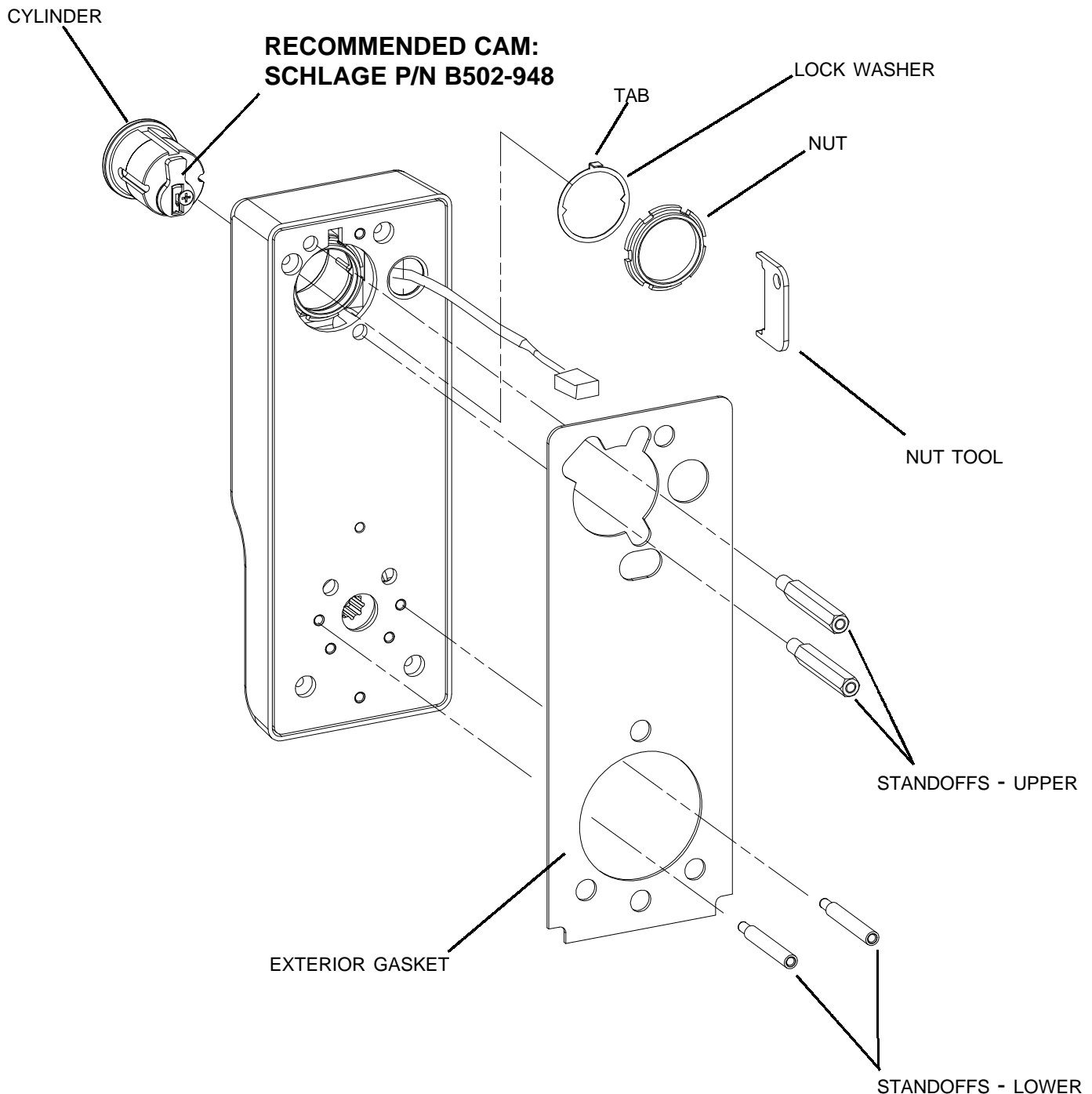
C. Place template on *inside* of door (opposite the side that the keypad/reader will be on). Line up the correct reference lines on the template with the edge of the door, depending on the hand (see paper template). The centerline on the door should line up with the vertical centerline of the template. Use the paper template to mark all holes. (Though the paper template is the preferred way to prep the door, the dimensions below may be used if a paper template is not available.)

D. Drill required holes. Note that all holes are required except the 3/4" hole just below the 1" hole, this is only required if the lock has the privacy feature (model 5594).



### 2. INSTALL CYLINDER, GASKET AND STANDOFFS:

- A. Install cam onto cylinder. Cam can be either a cloverleaf (shown) or straight, 11/16" design (not shown).
- B. Insert standard, 1-1/4" mortise cylinder into outside escutcheon from front (keypad/reader) side with keyway down.
- C. Slide lock washer into place with tab on top facing out, as shown below.
- D. Using nut tool (provided) tighten nut onto cylinder.
- E. Line up nearest notch on nut with tab on lock washer and bend tab into notch using nut tool so nut is secure.
- F. Install exterior gasket (if used).
- G. Install upper and lower standoffs.

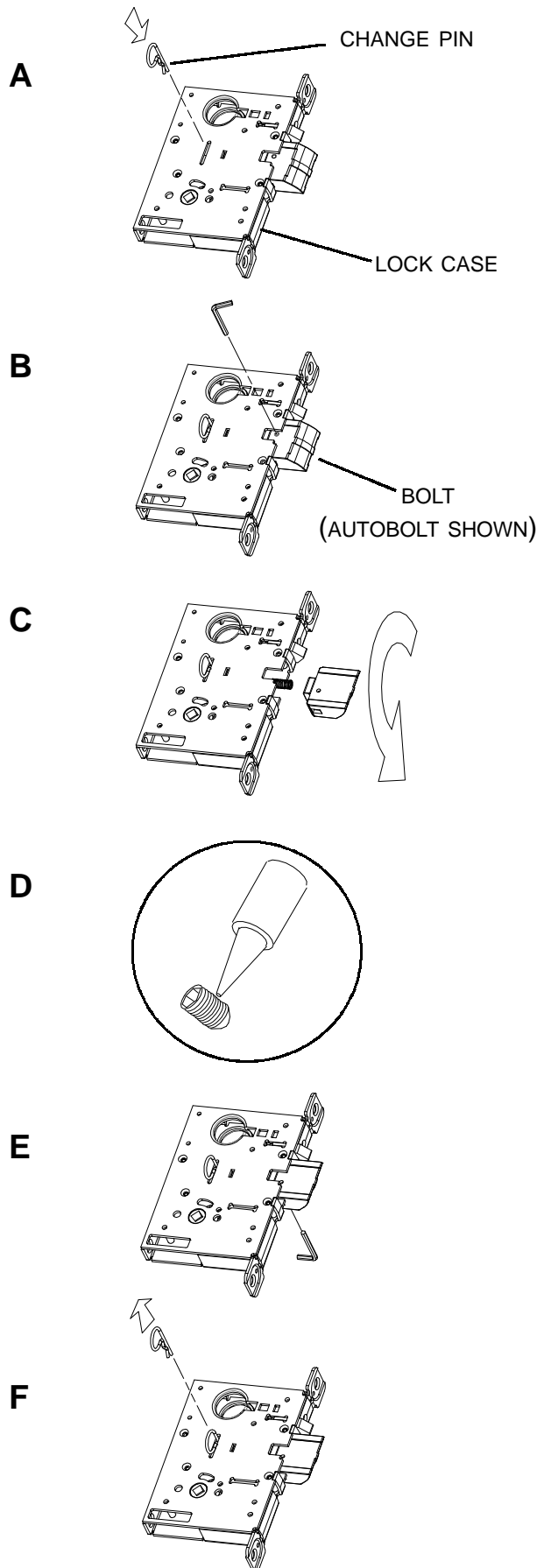


### 3. CHANGE HAND (IF NECESSARY):

NOTE: The locks are shipped as ordered from factory. If it is necessary to change the hand of the lock, follow the steps below:

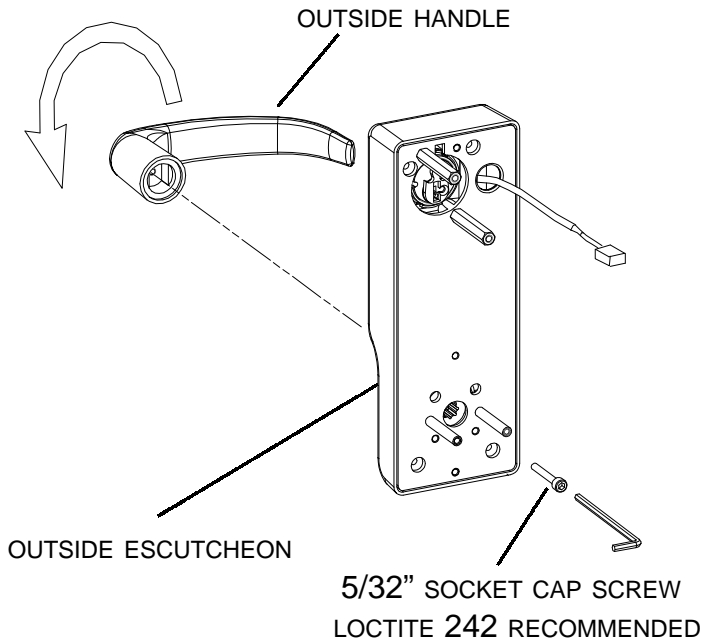
#### TO CHANGE HAND OF LOCK CASE:

- A. With bolt fully extended, insert change pin (included in the hardware pack) into hole. (It will snap over a groove on the main shaft, holding it in place.)
- B. Remove set screw in bolt so bolt can be removed.
- C. Rotate bolt and reinstall on to shaft. Do not remove spring.
- D. Apply thread locking compound to set screw.  
Loctite 242 recommended.
- E. Install and tighten set screw (from other side, as shown).
- F. Remove change pin.



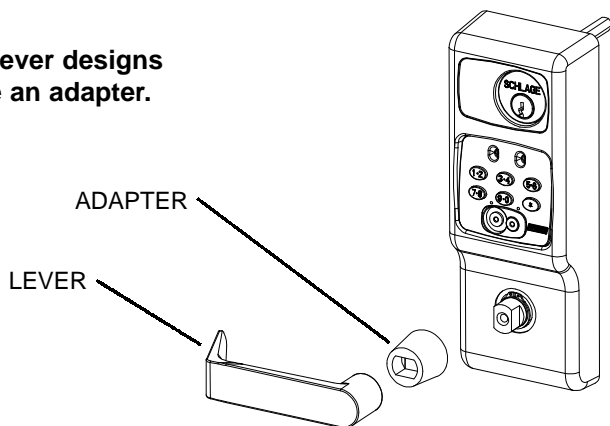
#### TO CHANGE HAND OF LEVERS:

- A. Loosen 5/32" socket cap screw and remove lever.
- B. Rotate handle to opposite position.
- C. Apply thread locker to screw. Loctite 242 recommended.
- D. Reinstall handle.
- E. Repeat for inside escutcheon (not shown).



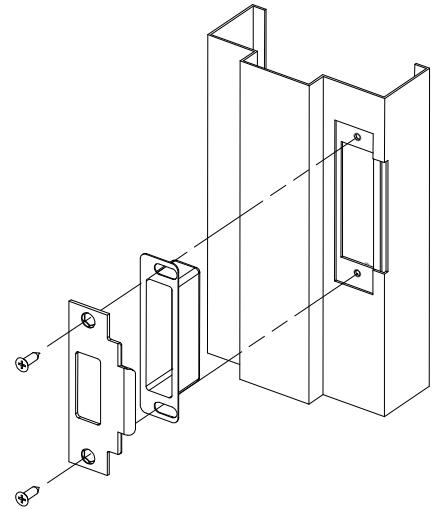
#### NOTE:

Some lever designs require an adapter.



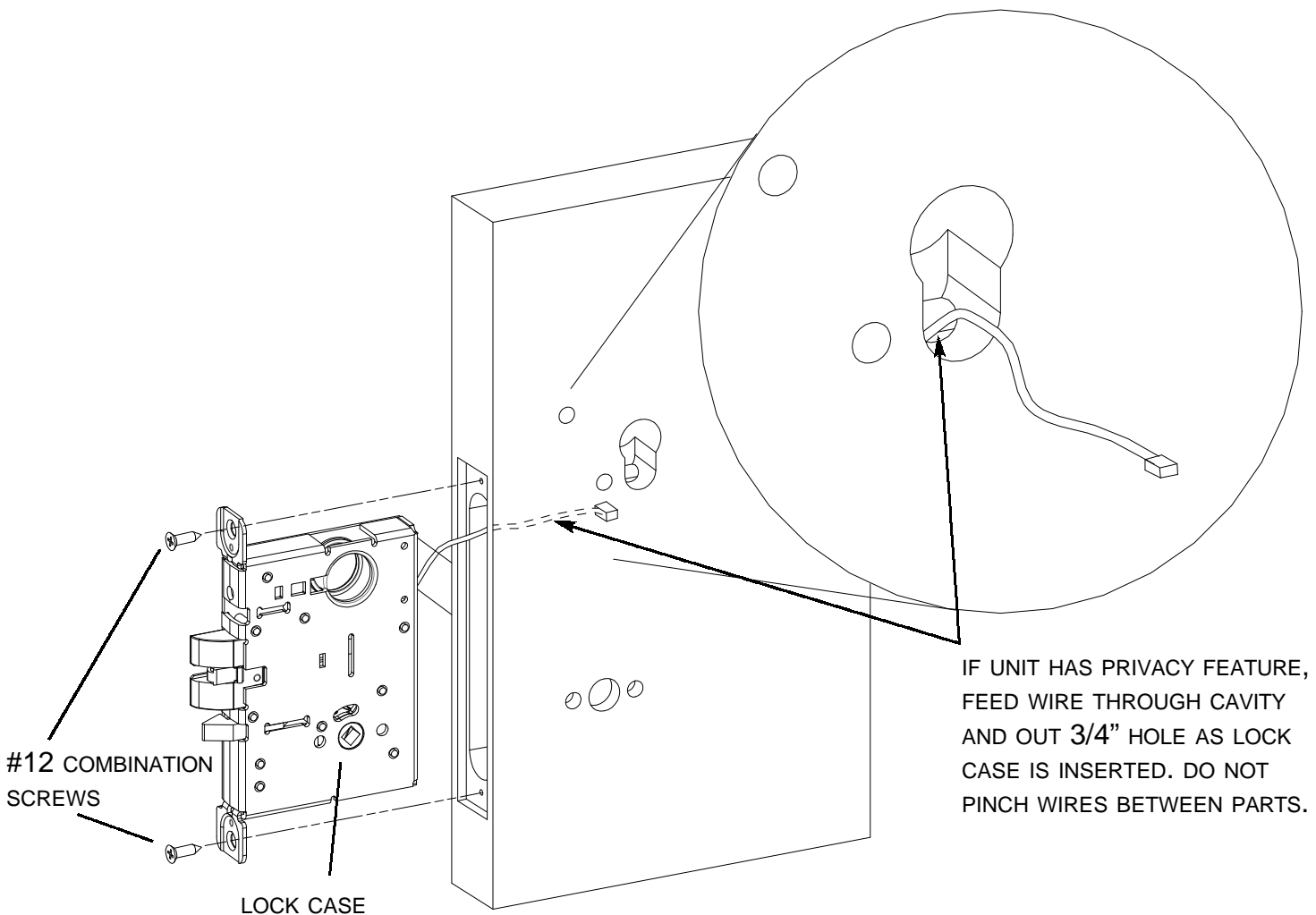
### 4. INSTALL STRIKE BOX AND STRIKE:

**IMPORTANT!**  
Strike included with lock **MUST** be used for proper operation of mortise lockset.



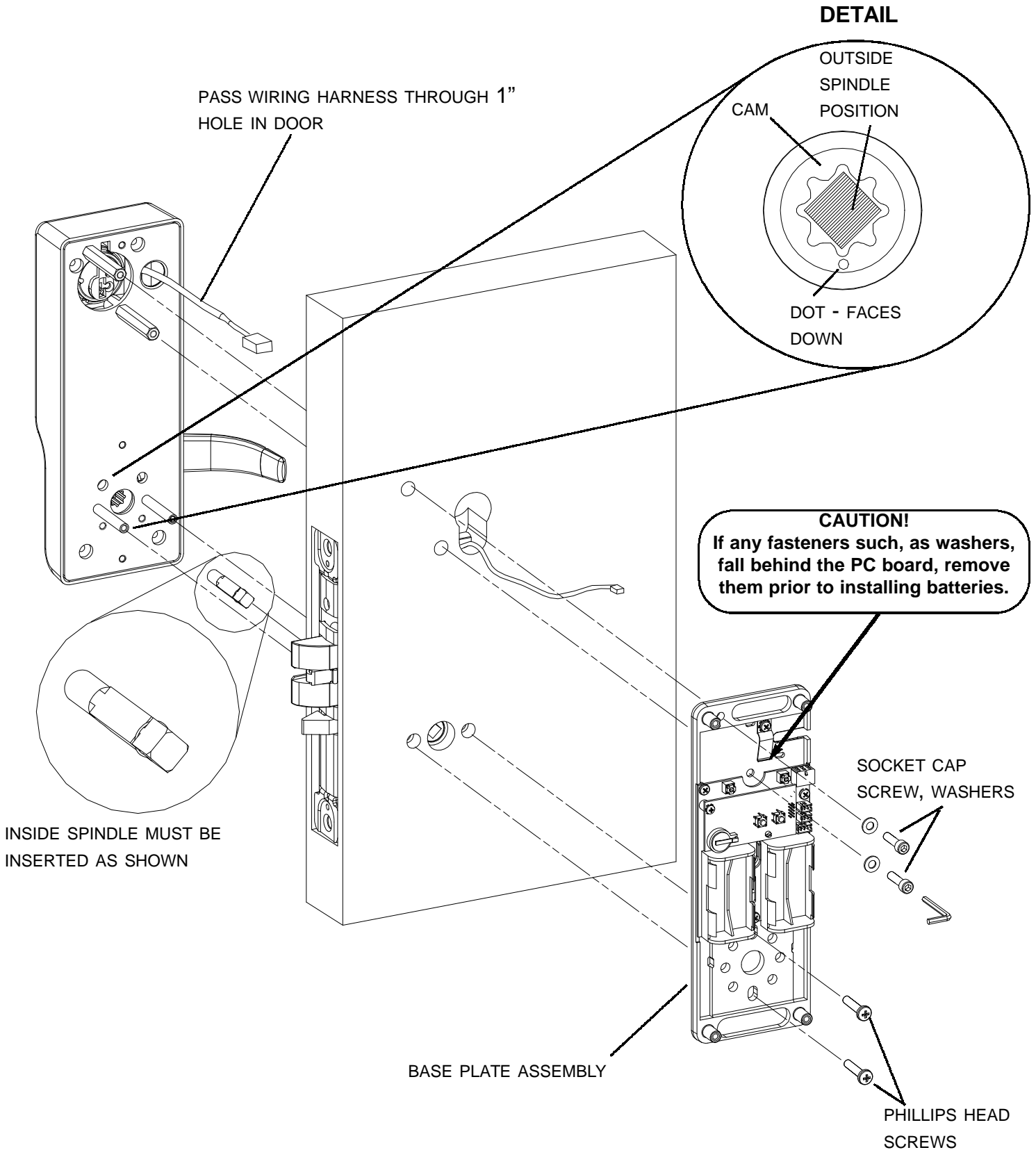
### 5. INSTALL LOCK CASE:

Install lock case into edge of door. If the lock has the Privacy option, feed the wire harness through the 3/4" hole as shown below. Secure to door with #12-24 combination screws.



### 6. INSTALL OUTSIDE SPINDLE, OUTSIDE ESCUTCHEON AND BASE PLATE ASSEMBLY:

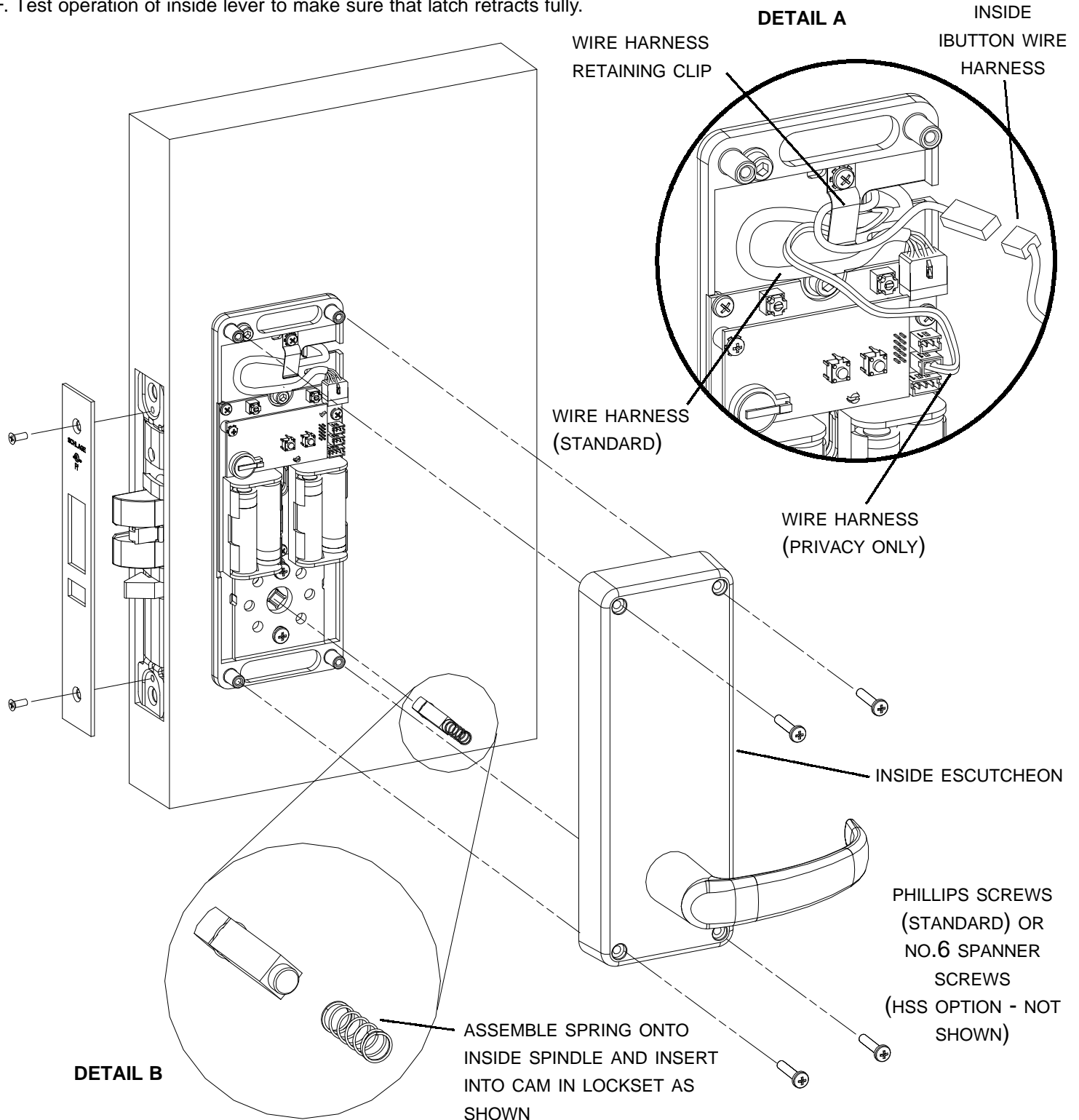
Install base plate assembly onto inside of door. Use socket cap screws with washers on top standoffs and phillips head screws on retractor assembly (bottom). Note that the cam on the outside escutcheon must be positioned with the dot at the 6 O'Clock position and inside spindle must be inserted as shown in details.



### 7. INSTALL INSIDE SPINDLE, BATTERIES, AND INSIDE ESCUTCHEON:

NOTE: The lock is shipped with four AA alkaline batteries. Always use new, high quality alkaline batteries.

- A. Plug wiring harness into PC board.
- B. Tuck wiring harness under retaining clip as shown in detail A, below. Not all wires shown will be present on all models.
- C. Install four AA batteries. Note polarity indication on battery holders.
- D. Assemble spring onto inside spindle as shown. install spindle into cam in lockset. Note that the flat side faces away from the door (See detail B).
- E. Install inside escutcheon, making sure that the inside spindle engages the lever cam.
- F. Test operation of inside lever to make sure that latch retracts fully.



### OPERATIONAL TEST:

1. Push down and up on *inside* lever: latch should retract.
2. Push down and up on outside lever. Lever should be disengaged from retractor and door should not unlock.
3. Insert mechanical key into cylinder and turn counterclockwise until it stops (about 1/2 turn). Push down and up on the *outside* lever. The latch should retract. (On units with ATK option you should see the green LED flash on the keypad/reader when the key is turned.)
4. If the unit has a keypad, enter the factory default access code:  
1 - 3 - 5 - 7 - 9

as soon as "9" is pressed you should hear a quiet "whir" and the green LED should flash green for about 10 seconds. During this time, push the handle down. The latch should retract. After the green LED stops flashing you should hear another quiet "whir" and the lock should relock. Test the handle again to verify that it is locked.

Note: Refer to the Programming Guide for information on entering iButton keys or cards to test them. Note that some literature may refer to I-buttons as "TEKS" or "TouchEntry Keys".

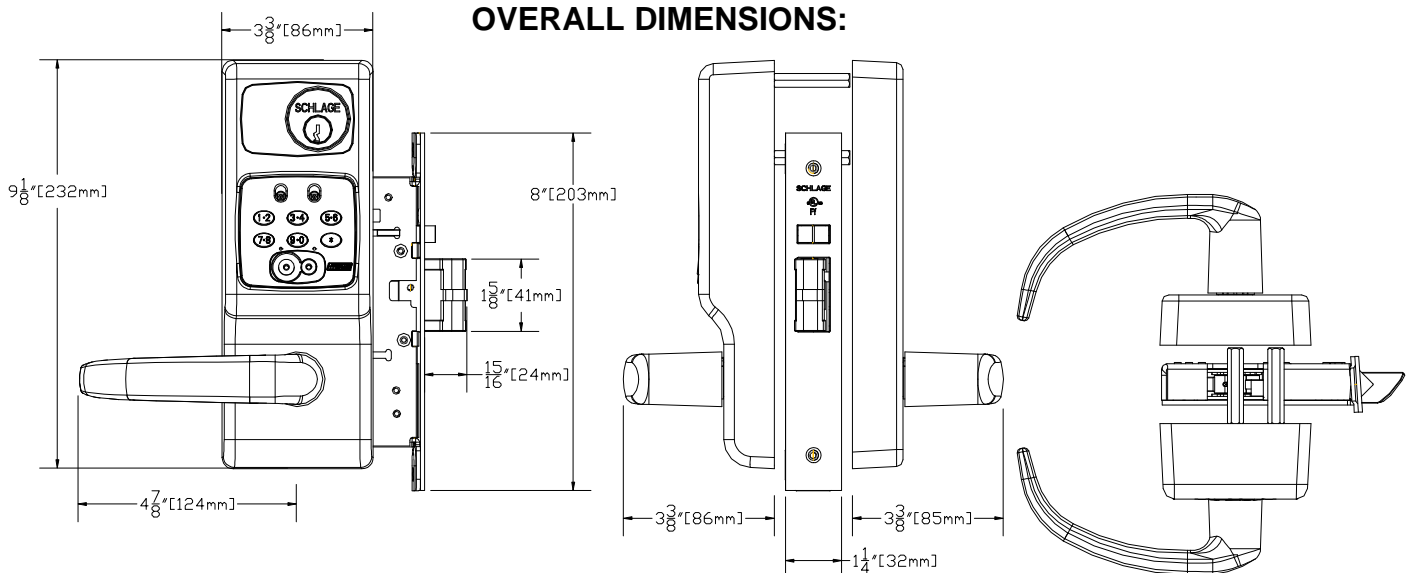
### TROUBLE SHOOTING:

PROBLEM:	POSSIBLE CAUSE:
Inside lever doesn't retract latch:	Inside spindle not installed
No response from keypad/reader:	Wiring harness not plugged in/Batteries not installed properly. Electronics problem (consult tech. support)
Mechanical key not working:	Wrong cam installed or cam installed in wrong position. Outside spindle not installed properly. Cylinder upside down.

### PROGRAMMING:

Please refer to the programming guide, shipped with the product, for instructions on manual programming and creating master programming credentials. If computer programming is required, please refer to the documentation and help files included with the software for more information.

### OVERALL DIMENSIONS:



This device complies with part 15 of the FCC rules. Operation is subject to the following two conditions: (1) this device may not cause harmful interference, and (2) this device must accept any interference received, including any interference that may cause undesired operation.