

SCHWINN

Runabout

Model 13-SC250/SC350 Trailer Owner's Manual

Please keep this Owner's Manual for future reference. If you sell or give this product away, please include this Owner's Manual, and ask the new owner to read the instructions completely before operating.

PRIOR TO ASSEMBLY:

- ❑ Please read this Owner's Manual completely before assembling or operating this product.
- ❑ Assembly of this product should be carried out by an adult.
- ❑ Parts are wrapped in paper or protective covering to prevent damage during shipment. Remove all parts and packing materials from the box prior to assembly. Save all packing materials until assembly is complete to make sure no parts are accidentally thrown away. After assembly is complete, properly discard all waste.
- ❑ Refer to the Parts List and Diagram on page two of this manual to make sure all parts are accounted for.
- ❑ **Do not return this product to the store!** If any parts are missing or damaged, please contact one of our Customer Service Representatives by phone at 1-800-242-6110, or by e-mail at Info@instep.net.

IMPORTANT SAFETY INFORMATION:

- ⚠ **WARNING** Always wear an approved safety helmet when riding!
- ⚠ **WARNING** Never leave your child unattended on this product!
- ⚠ **WARNING** This trailer bike is designed to attach to an adult bicycle with 26", 27", or 700C wheels!
- ⚠ **WARNING** This trailer bike does not have a brake. Make sure the adult bike brakes function properly!
- ⚠ **WARNING** Recommended for ages 4 through 9! Maximum weight capacity of rider is 75 pounds!
- ⚠ **WARNING** Make sure the child riding the trailer bike understands how to operate it correctly!
- ⚠ **WARNING** Always use the safety flag when riding with this product!
- ⚠ **WARNING** A bicycle with the trailer bike attached requires a wide turning radius! Use caution when turning!
- ⚠ **WARNING** Do not ride over curbs! Avoid bumps and potholes! Do not turn sharply!
- ⚠ **WARNING** Before riding, check that all parts are assembled correctly per the manufacturer's instructions!
- ⚠ **WARNING** Tire should be inflated to the pressure reading shown on the tire sidewall! Check before each use!
- ⚠ **WARNING** Use a foot pump or hand pump to inflate tires! Pressurized air hoses can cause overinflation!
- ⚠ **WARNING** Do not ride at night!
- ⚠ **WARNING** Do not ride barefoot!
- ⚠ **WARNING** Do not ride in wet weather or when road surface is slippery!
- ⚠ **WARNING** Periodically re-check all fasteners to make sure they are tight!

TOOLS REQUIRED FOR ASSEMBLY:

- ❑ Adjustable wrench
- ❑ 6mm Allen wrench
- ❑ 5mm Allen wrench

FULLY ASSEMBLED TRAILER BIKE



PARTS LIST

<u>QTY</u>	<u>DESCRIPTION</u>	<u>QTY</u>	<u>DESCRIPTION</u>
1	Frame w/ folding trailer arm, wheel, chain (w/ guard), crank	1	Seat post assembly w/ seat, red rear reflector and bracket
1	Coupler assembly	1	Left pedal
1	Handlebar w/grips and pad w/cover	1	Right pedal
1	Frame pivot bolt	1	Safety flag w/ poles and joiner
1	Frame quick release		

IMPORTANT!

We appreciate your purchase of this product, and hope you will be completely satisfied with your selection. Although great care has been taken to assure the highest quality, some problems may occur. PLEASE DO NOT RETURN THIS PRODUCT TO THE STORE! To ensure prompt and correct handling of your problem, or to answer any questions you may have, please contact our Toll-Free Customer Service Number listed below. Please have the model number (found on carton or manual) and assembly instructions ready when calling. If neither is available, please tell us the name of the product in question.

For questions concerning the safe use of this product, please contact Schwinn at

1-800-242-6110

E-mail: info@instep.net

Web site: www.instep.net

ASSEMBLY AND OPERATING INSTRUCTIONS

Open carton, remove contents, and compare contents with parts list

Note: To prevent scratching of the frame, it is recommended that you lay the parts out on top of a flattened cardboard box, or other soft surface.



1. Remove all contents from the carton. Check to make sure nothing is left in the box.
2. Unwrap all parts and compare them with the parts list and the above picture. Make sure nothing is missing.

STEP 1 Attaching the folding trailer arm

1A

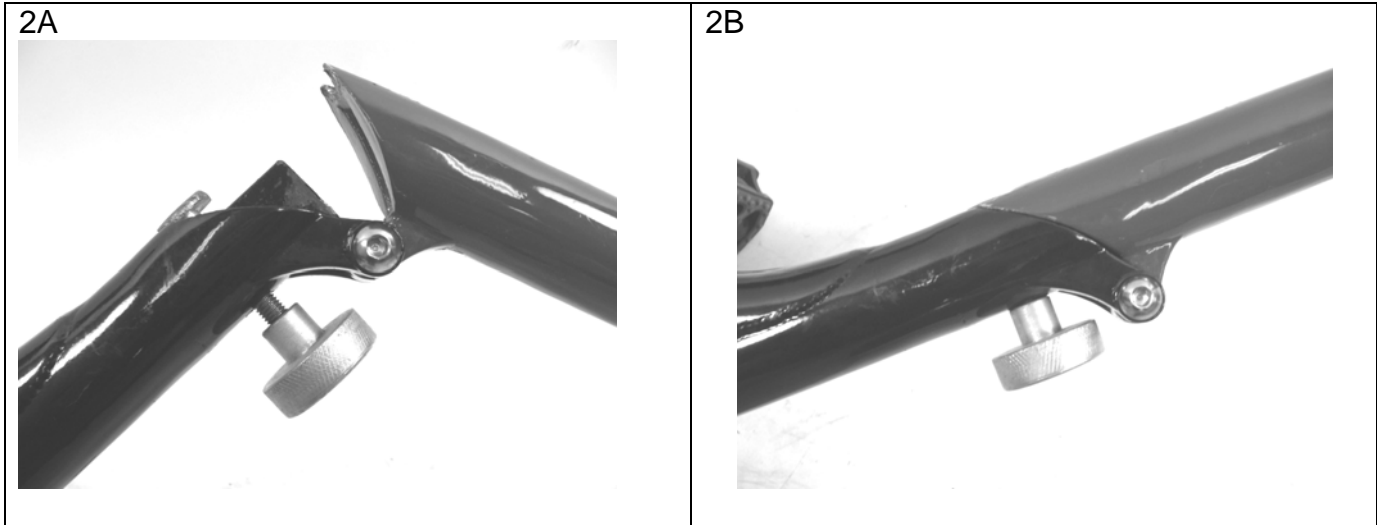


1B



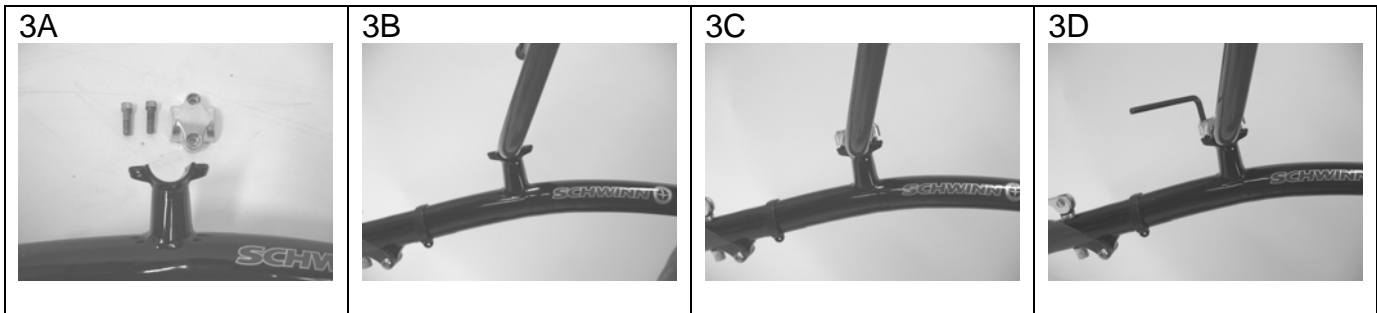
- 1A. Position the trailer arm to the Runabout frame as shown. Line up the three holes to begin assembling the hinge.
- 1B. Insert the receiving half of the frame pivot bolt through the three holes and insert the screw to the pivot bolt. Use the Allen wrench to tighten.

STEP 2 Extend the folding trailer arm



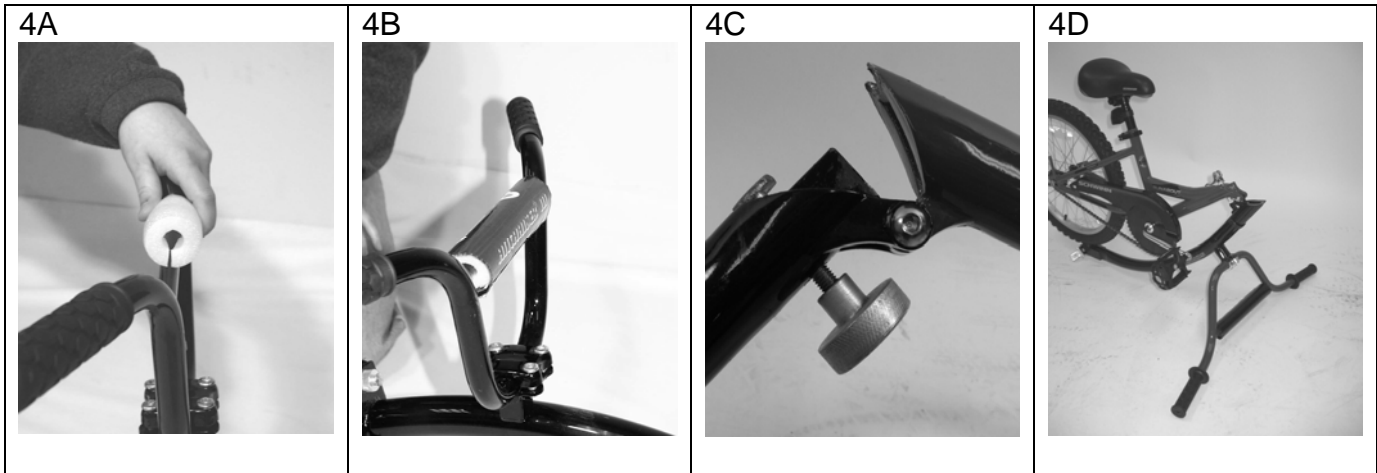
- 2A. Extend the trailer arm until the two frame ends are flush together. If necessary, move the quick release bolt and knob out of the way.
- 2B. Position the square head of the bolt into the squared spot on the frame and screw on the quick release knob to the other side. Tighten the knob so that the arm can't move.

STEP 3 Attach the handlebar



- 3A. Unscrew the two Allen-head screws using a 5mm Allen wrench and remove the handlebar clamp.
- 3B. Place the handlebar into the groove of the clamp base with the handlebar grips toward the rear of the trailer bike.
- 3C. Replace the clamp over the handlebar, insert both Allen head screws back into the clamp, and tighten with your fingers.
- 3D. Adjust the handlebar to the desired position and tighten both screws securely with the Allen wrench. **IMPORTANT NOTE:** As you tighten the screws, alternate among both to make sure they are tightened evenly. When properly tightened, the handlebar should not move.

STEP 4 Attach the handlebar foam then fold the trailer arm



Check to see if the handlebar pad is properly attached. If it is not, follow steps 4A and 4B.

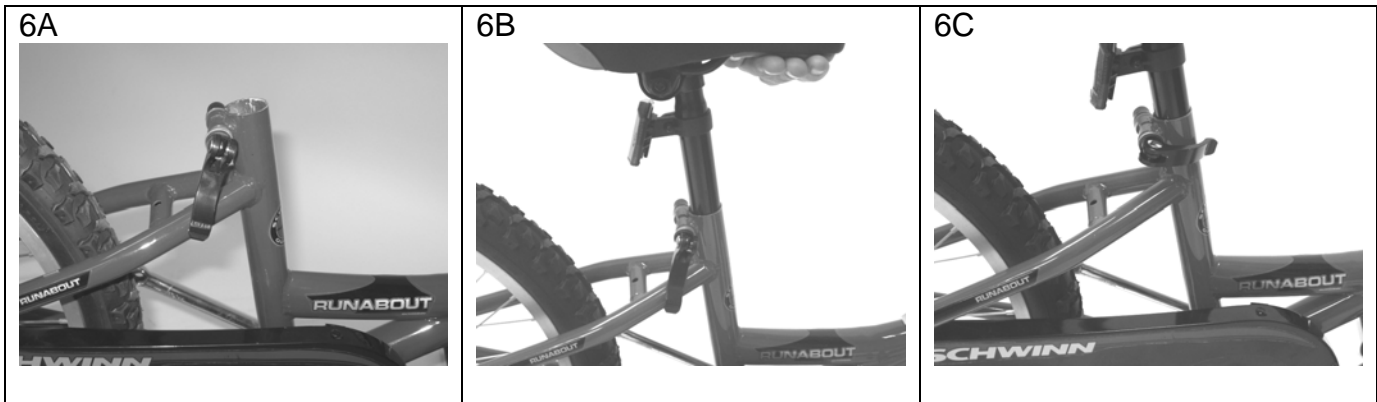
- 4A. Remove the cover from the foam pad and slide the foam pad over the handlebar crossbar so the opening is on the bottom.
- 4B. Wrap the cover around the foam pad and secure along the bottom edge.
- 4C. Loosen the QR skewer on the trailer arm and rotate the plate out of the way.
- 4D. Fold the arm under the trailer bike. The handlebar will allow the unit to stand up, making the remaining assembly steps easier.

STEP 5 Attach the pedals to the cranks



- 5A. Locate the right pedal (marked with an “R” at the end of the threaded shaft), and the left pedal (marked with an “L” at the end of the threaded shaft).
- 5B. Thread the right pedal clockwise into the right crank arm (the side with the chain) by hand. Tighten using an adjustable (or 15mm) wrench.
- 5C. Thread the left pedal counter-clockwise into the left crank arm (the side opposite the chain) by hand. Tighten using an adjustable (or 15mm) wrench.

STEP 6 Install the seat post assembly and adjust the seat



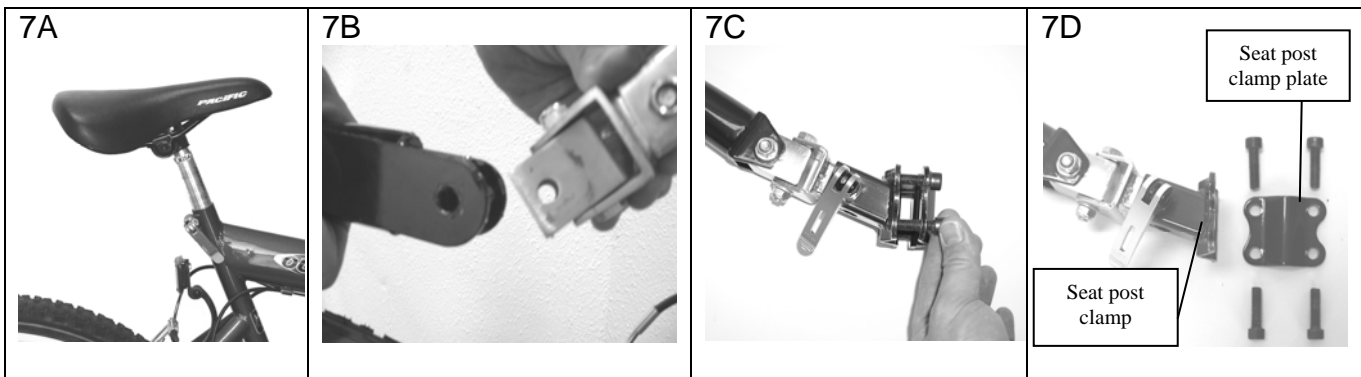
6A. Loosen the seat post quick release skewer.

6B. Slide the tube of the seat post assembly into the frame seat tube to a depth of at least 2-1/2 inches.

▲WARNING! Minimum insertion line must be completely inserted into frame and must not be visible!

6C. Adjust the seat to the desired height. With the seat facing forward, tighten the seat post down with the quick release skewer. Make sure the seat does not spin or move up and down.

STEP 7 Prepare coupler for attachment of Runabout to adult bike



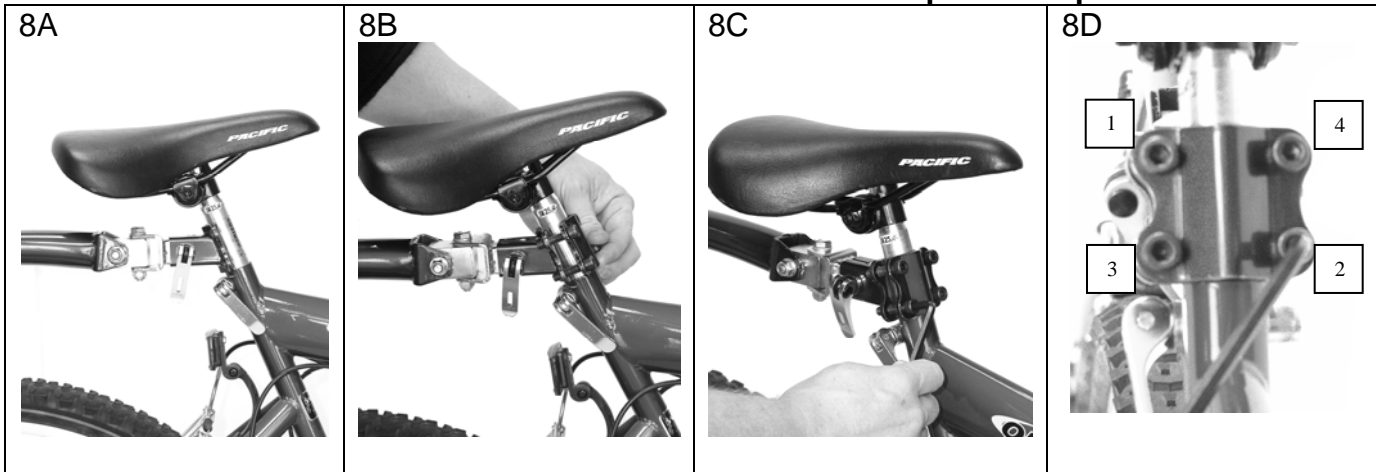
7A. Adjust the height of the adult bike seat to allow space for the coupler to clamp to the seat post. Re-tighten the seat post securely so it does not spin.

7B. Attach the coupler with the included bolt and nut and tighten securely with an adjustable wrench.

7C. Unscrew the four bolts on the coupler assembly that hold the seat post clamp plate to the seat post clamp.

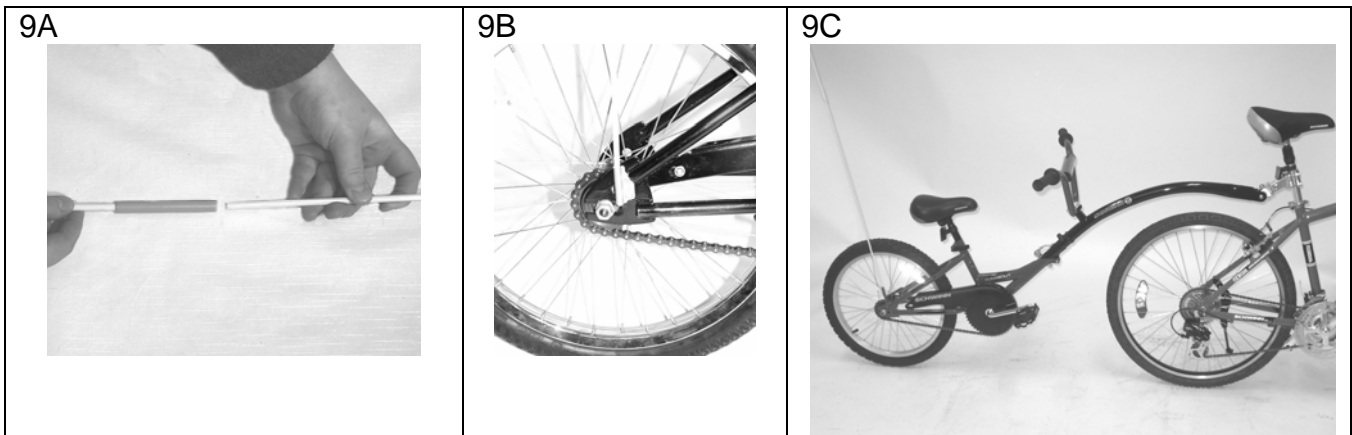
7D. Separate the seat post clamp plate from the seat post clamp.

STEP 8 Attach Runabout to adult bike and secure seat post clamp



- 8A. Place the Runabout behind the adult bike with the seat post clamp against the adult bike seat post. The seat post should rest in the valley of the seat post clamp.
- 8B. Place the seat post clamp plate over the seat post and tighten all four bolts by hand.
- 8C. Position the Runabout behind the adult bike so the coupler assembly, trailer arm, and bike are in a straight line. Tighten each bolt one turn with the Allen wrench.
- 8D. Tighten all four bolts in a crisscross pattern (1,2,3,4 then repeat) until they are tightened equally, and the gap between the clamp plate and coupler is even on both sides.

STEP 9 Insert safety flag, check tire pressure, and recheck all fasteners



- 9A. Locate the safety flag, poles, and plastic joiner. Join the two poles by inserting one pole into each end of the joiner.
- 9B. Insert the safety flag assembly into the bracket next to the trailer bike's rear hub nut.
- 9C. The completed product should look like this. Check the tire pressure and inflate to correct PSI reading indicated on the tire sidewall. Re-check all fasteners to make sure that they are all secure.

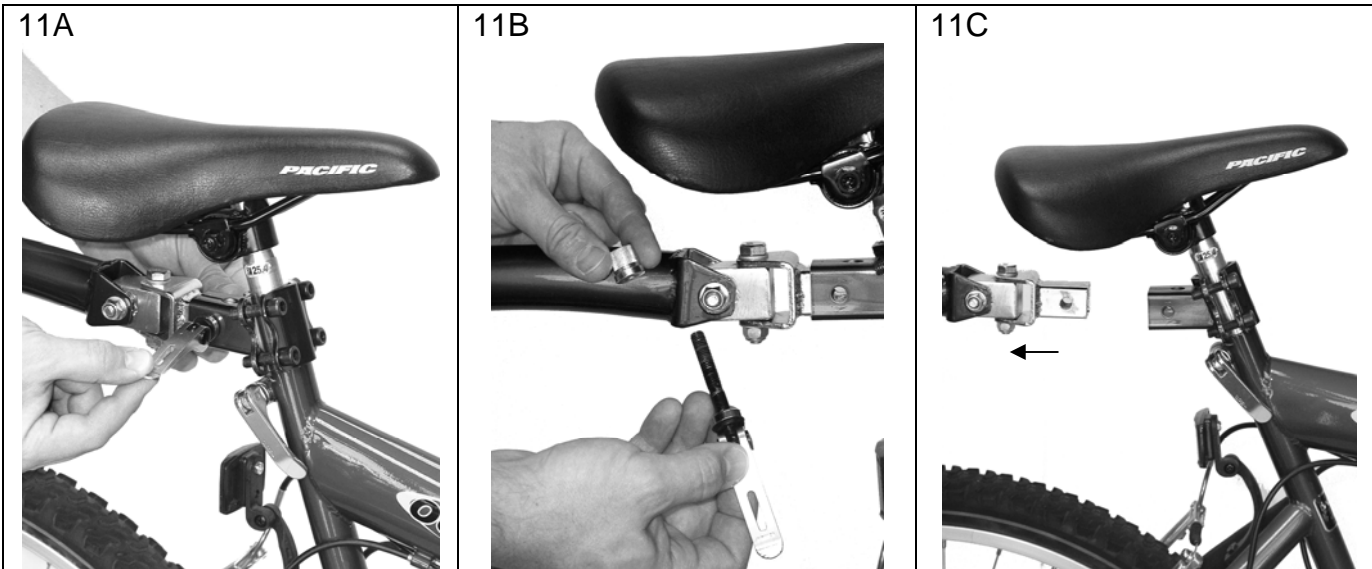
⚠ WARNING! Always use the safety flag when riding with this product!

STEP 10 Straddle the adult bike while the child climbs onto the trailer bike

⚠WARNING! The adult bike kickstand is not designed to support the additional weight of a child seated on the trailer bike. The adult pulling the child should always straddle the adult bike whenever the child is seated on the trailer bike, or getting on and off the trailer bike!

⚠WARNING! Always wear an approved safety helmet when riding!

STEP 11 Remove the Runabout from the adult bike

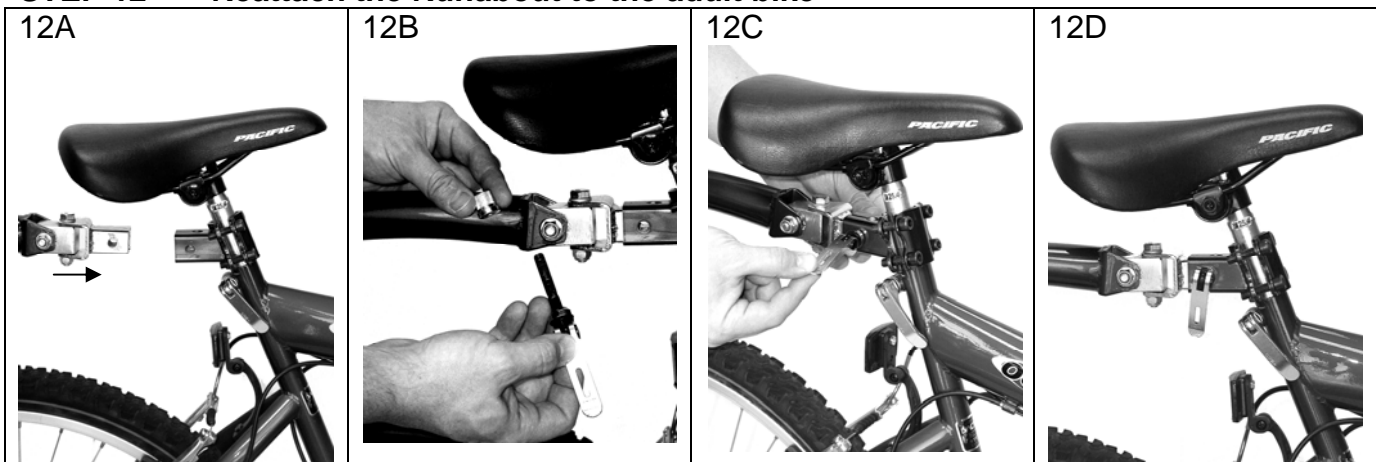


11A. Flip the quick-release lever up, and unscrew the nut from the other side.

11B. Remove the nut and slide the quick-release bolt completely out.

11C. Slide the coupler assembly out from the seat post clamp. Replace quick-release pin.

STEP 12 Reattach the Runabout to the adult bike



12A. Slide the square coupler assembly tube into the seat post clamp.

12B. Align the holes in the coupler assembly and seat post clamp tubes and slide the quick-release bolt through.

12C. Screw the nut over the threaded end of the pin and tighten with your fingers.

12D. Clamp the quick-release lever all the way down.

STEP 13 Maintenance

13A. Inflate tires with a hand or foot pump to the correct PSI reading shown on the tire.

13B. Lube the chain monthly, or as needed, with bicycle chain oil.

13C. Check all fasteners before each use to make sure they are all secure.

If you have any questions about the proper assembly or safe use of this product, please contact one of our Customer Service Representatives at

1-800-242-6110

or by e-mail at

info@instep.net.

ACCESSORIES FOR YOUR RUNABOUT TRAILER BIKE

Additional Coupler Kits allow you to switch your PATHFINDER from one bike to another. The PATHFINDER Coupler Kit includes the seat post clamp, four bolts, and the Q/R pin bolt.



----- Cut Here -----

Bike Trailer Accessory Order Form

Model #	Item	Cost	Shipping & Handling	Quantity	Amount
PF001	RUNABOUT Coupler Kit	8.99	3.00 (U.S. and Canada)		
IL residents add sales tax. All prices are in US\$. Canadian tax and duty are not included.					
TOTAL AMOUNT OF ORDER					

How to Order

Order accessories in one of four convenient ways:

1. Mail this form with a check or VISA or Master Card number listed to: **Pacific Cycle LLC**
4730 East Radio Tower Lane
Olney, IL 62450
2. Fax this form with Credit Card information to:
1-800-858-2800
3. Call our Customer Service Dept. at:
1-800-242-6110
4. Order on line at our web site:
www.instep.net

Please allow 7 to 10 business days for your shipment to arrive.

VISA or Master Card Only

Card Number _____ Expiration Date _____

Cardholder Signature _____

Ship To Name: _____

Street Address: _____

City/State/Zip: _____

Contact Phone: _____

Contact E-mail: _____

Prices are subject to change. Visit www.instep.net for updated pricing.