

ACCESSORIES

The LS-30 system includes a full range of accessories, so you can customize many feature of your security system.

All the radio transmitters used in the LS-30 system, except the Remote Controller, have a unique random code that is set by the factory with 16,777,216 combinations in total. Also with specially designed transmission timing control, the LS-30 system can effectively prevent mutual interference from other transmitters in the system. The Remote Controller uses copy-preventing hopping-code technology, changing its radio code every time you press the button. The combinations possible through this hopping-code are up to 7.3×10^{19} . To comply with the regulations in most countries, radio power is limited to below 10mW, and effective range is about 100 meters measured at open field. The range may be somewhat less indoors, depending on the layout of building construction and furniture.

You may enroll all the wireless accessories and change their related settings, either through the guidance of the interactive LCD display on the Base Unit explained in the “INSTALLATION” section that follows, or by using a computer with the proprietary software “HyperSecureLink” through an interface adapter, which offers a quicker and simpler way to perform the installation in.

NOTE: The changes or modifications not expressly approved by the party responsible for compliance could void the user’s authority to operate the equipment.

The comply with the FCC RF exposure compliance requirements, this device and its antenna must not be co-located or operating to conjunction with any other antenna or transmitter.

This device complies with Part 15 of the FCC Rules. Operation is subject to the following two conditions: (1) this device may not cause harmful interference, and (2) this device must accept any interference received, including interference that may cause undesired operation.

SMOKE DETECTOR



INSTALLATION

1. Loosen the bottom base of the SM-3S, and insert 9V battery properly.
2. Select “Installer Mode” on the Base Unit, and enter Installer Password to gain access authority. Then select \Set Device\Enroll Device\Fire Sensor\Enter Zone No. to enroll the ID of SM-3S by pressing its TEST button. You may change its various attributes under \Set Device\Change Device Setting\Fire Sensor Change, to fulfill different requirements.
3. Locate the SM-3S properly, and keep it within effective radio range of the Base Unit.
4. Press the “TEST” button, and check if the Base Unit is activated.

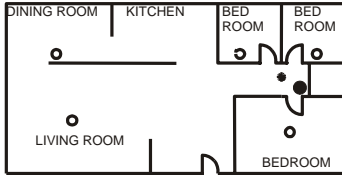
Notes: 1) The LED starts flashing after a few seconds when smoke is detected, then the internal buzzer sounds and activates the Base Unit after 10 seconds.

2) The LED flashes every 45 seconds to indicate the detector is in standby mode, and it beeps periodically if the 9V battery goes too low. Replace the battery when these beeps occur.

3) Maintenance at least once a year is essential. Open the cover and clean the sensing chamber with a vacuum cleaner carefully.

4) The SM-3S comes with cover latches that prevent the cover from closing if no battery is installed.

PREFERRED LOCATIONS



- SMOKE DETECTORS FOR MINIMUM SECURITY
- SMOKE DETECTORS FOR MORE SECURITY

Fig. 1: Locations for placing smoke detectors for single residence with only one sleeping area.

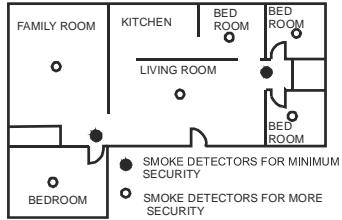
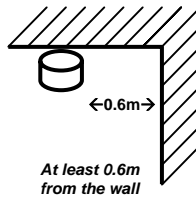


Fig. 2: Locations for placing smoke detectors for single-floor residence with more than one sleeping area.



LOCATIONS TO BE AVOIDED

Do **NOT** locate detector in:

- The kitchen: Smoke from cooking might cause an unwanted alarm.
- Near ventilating fan, fluorescent lamp or Air-Conditioning equipment: Air drafts from them may affect the sensitivity of the detector.
- Near ceiling beams or over cabinet: Stagnant air in these areas may affect the sensitivity of the detector.
- In the peak of an 'A' frame type of ceiling.

SPECIFICATIONS:

Detection: Photo-electric Chamber

Sensitivity: meets UL 217

Power: 9V alkaline battery

Temperature: 0°C - 50°C

Relative Humidity: 10% ~ 85%

Alarm Sound Level: 85dB@3m

Indicator Light: LED flashes every 45 seconds

Low Battery: Beep every 45 seconds

Current Drain: 6.5uA @standby, 24mA @activation

Battery Life: About 2 years.

Actuation Indicator: LED ON, Buzzer ON

Size: W 140mm x H 45mm

Weight: about 288g (w/ battery)