

SM-3SH SMOKE & HEAT DETECTOR

INTRODUCTION

SM-3SH smoke & heat detector is designed to sense smoke that comes into the detector chamber, also the ambient temperature and to give early warning of developing fires by activating LS-30 alarm system, and its built-in siren as well.

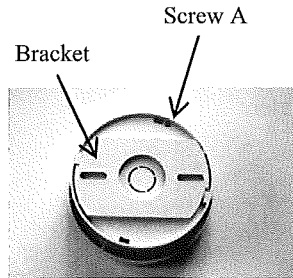


Fig. 1

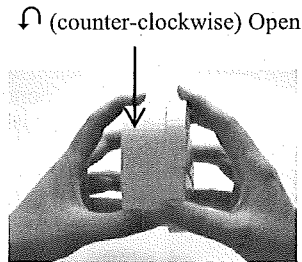


Fig. 2

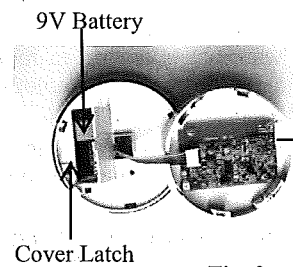


Fig. 3

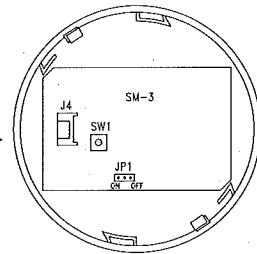


Fig. 4

JP1:
 ON: Enable heart-beat signal (recommended)
 OFF: Disable heart-beat signal

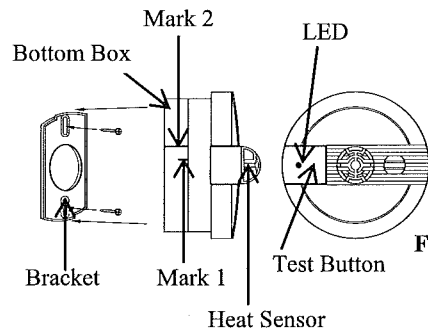


Fig. 5

INSTALLATION

1. Refer to Fig. 1, loosen the Screw A on the bottom box by about 5 turns counter-clockwise
2. Refer to Fig. 2, detach the bottom box of the SM-3SH detector.
3. Refer to Fig. 3, open the cover of the battery compartment, connect supplied 9V battery and then close the cover.
4. Refer to LS-30 manual, enter Installer Code on LS-30 base unit to gain access authority, select Installer Mode\Set Device\Enroll Device\Fire Sensor\Enter Zone No. to enroll the ID of SM-3SH by pressing its TEST button for one or two seconds. You may change its various attributes under \Set Device\Change Device Setting\Fire Sensor Change, to fulfill different requirements. However, for initial installation, programming through PC with supplied software is recommended, since it's much easier.
5. Re-assemble the bottom box with the main body. The marks should be at the position shown in Fig. 5 after combination. And then tighten the Screw A.
6. Locate the smoke detector properly (refer to Fig. 6), and fixed the bracket with the two supplied screws on the ceiling. And then mount the smoke detector on the bracket.
7. Press the "TEST" button of the SM-3SH, and check if the base unit is activated.

NOTE:

- 1) The LED starts flashing after a few seconds when smoke is detected, then the internal buzzer sounds and activates the LS-30 base unit after 10 seconds.
- 2) The LED flashes every 43 seconds to indicate the detector is in standby mode.
- 3) If 9V battery goes too low, the buzzer beeps periodically and the LS-30 base unit issues warning status also. Replace the battery when these beeps occur.
- 4) Maintenance at least once a year is essential. Open the cover then clean the sensing chamber (a block box) with vacuum cleaner carefully.
- 5) SM-3SH comes with cover latch that prevents the cover from closing if no battery is installed.

PREFERRED LOCATION

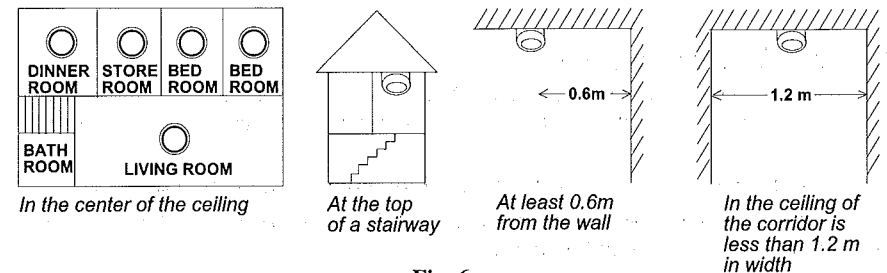


Fig. 6

LOCATIONS TO BE AVOIDED

Do NOT locate detector in:

1. The Kitchen: Smoke from cooking might cause an unwanted alarm.
2. Near Ventilating fan, Fluorescent lamp or Air-Conditioning equipment: Air drafts from them may affect the sensitivity of the detector.
3. Near Ceiling beams or over Cabinet: Stagnant air in these areas may affect the sensitivity of the detector.
4. In the peak of an 'A' frame type of ceiling.

TESTING THE SMOKE DETECTOR

Test the detector weekly by pushing firmly on the test button with your finger until the buzzer sounds.

WARNING: Never use an open flame to test your detector. You may set fire to damage the detector, as well as your home. The built-in test switch accurately tests all detector functions, as required by Underwriters' Laboratories. They are the only correct ways to test the unit.

WARNING: When you are not testing the unit and the alarm buzzer sounds a loud continuous sound, this means the detector has sensed smoke or combustion particles in the air. Be sure that the alarm buzzer is a warning of a possible serious situation, which requires your immediate attention.

The alarm could be caused by a nuisance situation. Cooking smoke or a dusty furnace, sometimes called "friendly fires" can cause the alarm to sound. If this happens, open a window or fan the air to remove the smoke or dust. The alarm will turn off as soon as the air is completely clear.

NOTE: If the alarm buzzer begins to beep once half a minute, this signal means that the detector's battery is weak. Replace new battery immediately.

MAINTENANCE: Open the cover and vacuum the dust off the detector's sensing chamber at least once a year. This can be done when you open the detector to change the battery. Remove battery before cleaning.

TESTING THE HEAT SENSOR

The detector to be tested should be subject to a flow of warm air at a temperature between 60°C and 80°C. This requirement can be met by some domestic hair dryers. Proceed as follows:

1. Switch on the warm air flow and check that temperature is correct and stable.
2. From a distance of inches, direct the airflow at the guard protecting the thermistor. The detector should alarm within 30 seconds.
3. On alarm immediately remove the heat source, check that the detector's red LED is lit.

SPECIFICATIONS

Detection: Photo-electric Chamber for smoke

Thermistor for heat, alarm level: above 57+/- 3°C

Either of smoke or heat alarm would trigger the detector

Power: 9V Alkaline Battery

Current Consumption: 10uA@ standby, 16mA@ activation

Battery Life: About 1~1.5 years

Working Temperature: 0°C ~ 50°C

Ambient Relative Humidity: 10%~85%

Alarm Sound Level: 85dB@3m

Indicator Light: LED flashes every 43 seconds approximately.

Low Battery: Beep every 43 seconds approximately.

Actuation Indicator: LED ON, Buzzer ON

Size: ϕ 102 mm x H 64mm

Weight: About 120g (w/o battery)

Vds (Germany) approved

WARRANTY

Limited Warranty: Scientech Electronics Co., Ltd. warrants its SM-3SH Smoke & Heat Detector to be free from defects in material and workmanship under normal use and service for a period of one (1) year from date of purchase. The warranty is limited to repair or replacement of any part of the detector that is found to be defective in materials or workmanship under normal use and service during warranty period.

The Company shall not be obligated to repair or replacement units which are found to be in need of repair because of damage, unreasonable use, modifications, or alterations occurring after the date of purchase.

In no case shall the Company be liable for any consequential or incidental damages for breach of this or other warranty, expressed or implied whatsoever, even if the loss or damage is caused by the Company's negligence or fault.



WARRANTY

The Manufacturer warrants its products (hereinafter referred to as the Product) to be in conformance with its own plans and specifications and to be free of defects in materials and workmanship under normal use and service for a period of twelve months from the date of shipment by the Manufacturer. The Manufacturer's obligations shall be limited within the warranty period. At its option, to repair or replace the Product or and part thereof. To exercise the warranty the Product must be returned to the Manufacturer freight prepaid and insured.

This warranty does not apply in the following cases: improper installation, misuse, failure to follow installation and operating instructions, alteration, abuse, accident or tampering, and repair by anyone other than the manufacturer.

This warranty is exclusive and expressly in lieu of all other warranties, obligations or liabilities, whether written, oral, express or implied, including any warranty of merchantability or fitness for a particular purpose, or otherwise. In no case shall the Manufacturer be liable to anyone for any consequential or incidental damages for breach of this warranty or any other warranties whatsoever, as aforesaid.

This warranty shall apply to the Product only. All Products, accessories or attachments of others used in conjunction with the Products, including batteries, shall be covered solely by their own warranty, if any. The Manufacturer shall not be liable for any damage or loss whatsoever, whether directly, indirectly, incidentally, consequentially or otherwise, caused by the malfunction of the Product due to Products, accessories, or attachments of others, including batteries, used in conjunction with the Products.

The Manufacturer shall have no liability for any death, personal and/or bodily injury and/or damage to property or other loss whether direct, indirect, incidental, consequential or otherwise, based on a claim that the Product failed to function.

NOTE: The changes or modifications not expressly approved by the party responsible for compliance could void the user's authority to operate the equipment.

To comply with the FCC RF exposure compliance requirements, this device and its antenna must not be co-located or operating to conjunction with any other antenna or transmitter.

This device complies with Part 15 of the FCC Rules. Operation is subject to the following two conditions: (1) this device may not cause harmful interference, and (2) this device must accept any interference received, including interference that may cause undesired operation.

