

TOYOTA Celica

RADIO CONTROLLED
with MP3 Player



OPERATING INSTRUCTIONS:

CONTENTS:

- | | |
|------------------------|--------------------------|
| 1. Vehicle x 1 | 4. 1.5V AA battery x 2 |
| 2. Transmitter x 1 | 5. 9.6V battery pack x 1 |
| 3. Battery Charger x 1 | 6. USB cable x 1 |

BATTERY PACK CARE / CAUTIONS:

- If battery pack and/or connectors are wet, allow them to dry thoroughly before charging.
- Unplug the battery pack if it is not going to be used for several days.
- Do not charge a battery pack that is hot, wet or shows signs of leakage or corrosion.
- Do not expose to fire, as explosion may result.
- Do not disassemble the battery pack.

BATTERY CHARGING:

THE RECHARGEABLE NI-CD BATTERY PACK IS NOT CHARGED. PLEASE CHARGE IT FOR 4 HOURS PRIOR TO USE. THE RECHARGEABLE NI-CD BATTERY PACK & CHARGER ARE TO BE OPERATED BY ADULT.

- Plug the wall pack battery charger into a wall outlet.
- Connect the battery pack and charger cables by snapping together the jack and the socket tightly (See Diag. 1).
- After charging for 4 hours, the battery pack will be warm. This condition is normal for fully charged batteries.
- If the speed of the car slows down or MP3 player stops playing suddenly, it is time to recharge.
- To disconnect the cables, press down on the clip and pull apart (See Diag. 1).
- After use, the battery pack will be hot! Wait at least 20 minutes until it cools before recharging.
- Recharging a warm or hot battery pack will greatly shorten battery life.

BATTERY INSTALLATION:

VEHICLE:

- Make sure the ON/OFF switch of both the vehicle and the MP3 Player are at the 'OFF' position (See Diag. 2&17).
- Turn the lid stopper in the clockwise direction to open battery lid (See Diag. 3).
- Lift the battery lid to open and place the battery pack inside properly (See Diag. 3).
- Plug the jack of the battery pack into the socket of the battery compartment (See Diag. 3).
- Replace the battery lid and turn the lid stopper to close.

TRANSMITTER:

- Unscrew the battery cover at the bottom of the transmitter and place two 1.5V AA batteries inside following the engraved signs (See Diag. 4).
- Replace the battery cover.

VEHICLE OPERATION:

- Pass the cable through the antenna tube provided and plug into the vehicle tightly (See Diag. 5).
- Screw the telescoping antenna onto the top of the transmitter and extend to full length (See Diag. 6).
- Push the ON/OFF switch to the "ON" position of the vehicle (See Diag. 2).

DRIVING FORWARD

(TURBO POWER BOOST)

- Pull the trigger backward for forward running (See Diag. 7).
- Pull the trigger to half way for normal speed (See Diag. 8).
- Pull the trigger all the way for turbo speed (See Diag. 9). Release the trigger half way to resume normal speed.

DRIVING IN REVERSE:

- Push the trigger of the transmitter forward (away from you) (See Diag. 10).

FRONT WHEELS STEERING ADJUSTMENT:

- If the vehicle does not run straight forward, adjust the lever for satisfactory alignment at the underside of the vehicle (See Diag. 11).
- If the vehicle runs toward left, turn Steering Alignment Lever towards "R".
- If the vehicle runs toward right, turn Steering Alignment Lever towards "L".

STEERING OPERATION:

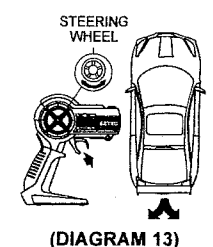
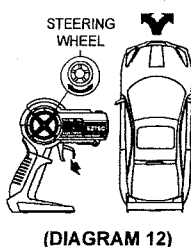
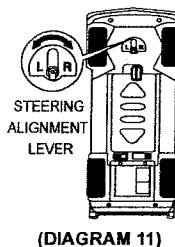
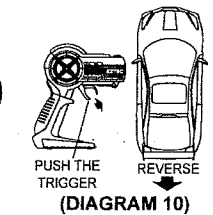
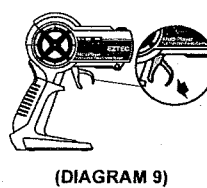
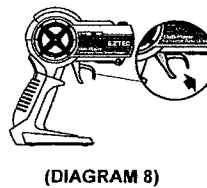
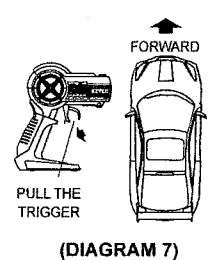
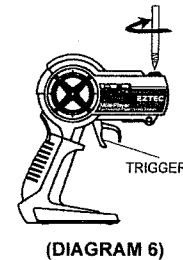
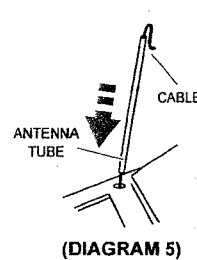
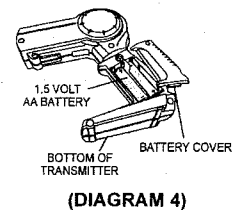
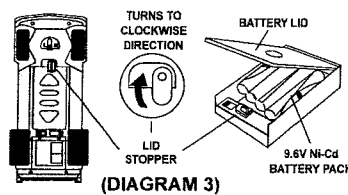
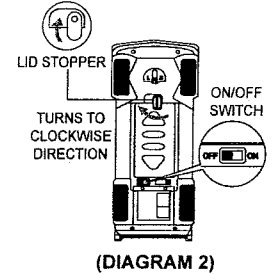
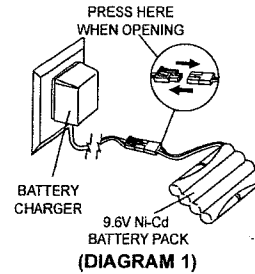
- To make left or right-hand turns while driving forward, turn the steering wheel to left or right while pulling the trigger of the transmitter back (towards you) (See Diag. 12).
- To make left or right-hand turns while driving in reverse, turn the steering wheel to left or right while pushing the trigger of the transmitter forward (away from you) (See Diag. 13).

STOP OPERATION:

- Release the trigger to stop. (See Diag. 14).

CHANGING BANDS FOR MULTI-PLAYER SYSTEM

- There are three available bands so three cars may be raced at the same time
- Assign a different band for each car, i.e. For 27 MHz, they are Band 1, Band 2 and Band 3 (See Diag.15).
- Adjust the transmitter to the corresponding band to control the selected car (See Diag.16).

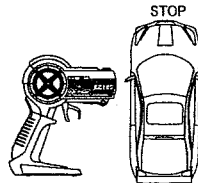


#98547

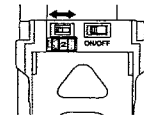
SIZE:339MM X 279MM
OI PN#65-3046-100-0100

MP3 PLAYER BASIC OPERATION

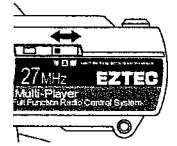
- A. The MP3 player is located at the back of the car (See Diag. 17).
- B. Slide the ON/OFF button to the "ON" position to turn on the power. The speakers will light-up (See Diag. 18).
- C. Allow 2 seconds for the program to load, press the "▶/||" button to start playing music. The speaker lights will flash (See Diag. 19).
- D. Press "■" button to stop playing (See Diag. 20).
- E. Volume can be adjusted by pressing the "volume +/-" button.
- F. Press the "▶/||" button to temporarily suspend playing; press again to resume playing.
- G. Use the "▶▶" or "◀◀" buttons to switch between songs.
- H. Slide the ON/OFF button to "OFF" position to turn off the player, the speaker lights will turn off.



(DIAGRAM 14)



(DIAGRAM 15)



(DIAGRAM 16)

POWER SAFE MODE

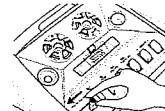
If the MP3 unit is ON and no songs have been played for 3 minutes, the unit will enter the POWER SAFE MODE, and the speaker lights will go off. To restart the unit, slide the ON/OFF button to "OFF" and then "ON" again. If the unit does not respond, please recharge the battery before use.

FILE TRANSFERRING

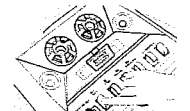
- A. Make sure your PC supports USB.
- B. Remove the protective cover of the USB socket of the MP3 unit (See Diag. 21).
- C. Connect the MP3 player and the computer with the supplied USB cable (See Diag. 22).
- D. If your operating system is Windows 2000, Windows XP, the system will detect the existence of a new hardware and will install the driver automatically (See Diag. 23).
- E. A "Removable Disk" will appear in your computer when correct connections have been set up (See Diag. 24).
- F. Select the MP3 music files from the computer to transfer/copy them to the "Removable Disk" (See Diag. 25).
- G. Speaker lights will flash when files are being transferred.
- H. Make sure the speaker light has stopped flashing before unplugging the USB cable.



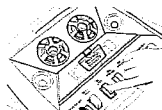
(DIAGRAM 17)



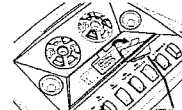
(DIAGRAM 18)



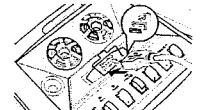
(DIAGRAM 19)



(DIAGRAM 20)



(DIAGRAM 21)



(DIAGRAM 22)

FORMATTING THE MP3 PLAYER

- A. If you are unable to download or delete files or if the system crashes, please format the MP3 player by Windows FAT or FAT16 format to repair the problem.
- B. Select the "Removable Disk" which you want to format, right click the mouse and choose "Format..." to format the player (See Diag. 26).

CAUTION

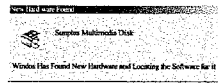
- All the files will be deleted by formatting the MP3 player.
- Do not pull out the USB cable while a file is being downloaded or when the player is formatting.
- If the MP3 player does not work, unplug the USB cable and re-insert it 3 seconds later, reconnect the MP3 player to the PC, then delete the damaged songs in the MP3 player.

PERFORMANCE TIPS

- Do not drive the car on grass, sand or carpet.
- Do not drive the car through water.
- Be sure to rest your vehicle for at least 30 minutes after every 15 minutes of operation.
- Make sure the ON/OFF switch on your vehicle is at the "OFF" position when it is not in use.
- Do not bend the antenna.
- Electrical, CB interference, mobile phones, air conditioning, elevators and steel girders in buildings will affect the operation of your vehicle.
- Do not leave the vehicle or transmitter near sources of heat or in direct sunlight for long periods of time.
- Remove the batteries from the vehicle and transmitter when they are not in use.

SYSTEM REQUIREMENTS FOR MP3

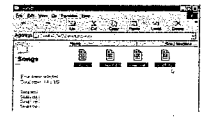
- IBM compatible personal computer.
- Pentium 166MHz MMX or faster.
- Windows 2000 or Windows XP.
- USB port.
- 64MB RAM or more.



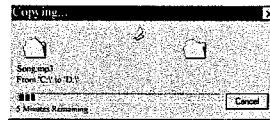
(DIAGRAM 23)



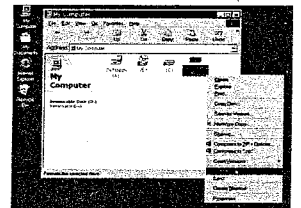
(DIAGRAM 24)



(DIAGRAM 25)



(DIAGRAM 26)



(DIAGRAM 27)

Microsoft, and Windows 2000/XP are registered trademarks of Microsoft Corporation. All other brand or product names are trademarks of their respective owners.

ATTENTION PARENTS:

IT IS RECOMMENDED THAT THIS TOY AND ALL ACCESSORIES BE PERIODICALLY EXAMINED FOR POTENTIAL HAZARDS AND THAT ANY POTENTIALLY HAZARDOUS PARTS BE REPAIRED OR REPLACED.

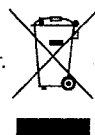
Trademarks TOYOTA CELICA and copyright thereof are used under the license of Toyota Motor Corporation.

MEGA MOTORS™ and associated trademarks are used under license from Argos Retail Group Companies. Copyright 2002 ARG, Avebury, 489-499 Avebury Boulevard, Milton Keynes MK9 2NW. Please retain this information for future reference.

FCC NOTE:

THE ANTENNA PROVIDED IS A UNIQUE ANTENNA. BY INSTALLATION OF UNAUTHORIZED ANTENNA TO THIS EQUIPMENT. SUCH UNAUTHORIZED INSTALLATION COULD VOID THE USER'S AUTHORITY TO OPERATE THE EQUIPMENT.

THE MANUFACTURER IS NOT RESPONSIBLE FOR ANY RADIO OR TV INTERFERENCE CAUSED BY UNAUTHORIZED MODIFICATIONS TO THIS EQUIPMENT. SUCH MODIFICATIONS COULD VOID THE USER'S AUTHORITY TO OPERATE THE EQUIPMENT.



MODEL NUMBER: 98547
PRINTED IN CHINA
O.I. NO. 3046

#98547
SIZE:339MM X 279MM
OI PN#65-3046-100-0100