



LINCOLN NAVIGATOR

ATTENTION PARENTS:

IT IS RECOMMENDED THAT THIS TOY AND ALL ACCESSORIES BE PERIODICALLY EXAMINED FOR POTENTIAL HAZARDS AND THAT ANY POTENTIALLY HAZARDOUS PARTS BE REPAIRED OR REPLACED.

Item #97547

Fast Lane is a mark of Geoffrey, Inc.
©1999 Geoffrey, Inc.
Distributed by Toys"R"Us
Wayne, NJ 07470
Made in China
O.I. NO. 3140
www.toysrus.com



CAUTION- ELECTRIC TOY

Not recommended for children under 6 years of age. As with all electric products, precautions should be observed during handling and use to prevent electric shock. Input: 120VAC, 60HZ 5.5W Only. Output: 12VDC, 0.2A

OPEI
IMPORTA
PACK IS
4 HOURS

Battery

1. Plug the
2. Connec together Charge.
3. To discc apart. (S
4. After ch normal f
5. If the sp recharge
6. After ea pack to Rechar useful lif

BATTE
CHARG

Battery

- Make s are dry
- Battery harm. f the batt

Feature Detail

FORWARD & REVERSE:

- 3 different speeds from slow to fast by pressing the GEAR button on the Remote Control. See detail in section "GEAR"
- 3 engine sounds depending on the gear selected .
- the brake light comes "ON" when the vehicle stops.

LEFT & RIGHT SIGNAL LIGHTS:

- the signal light flashes when the vehicle turns left or right.

HORN:

- press the HORN button on the Remote Control to activate the vehicle's horn. (See Diagram 6)

HEAD LIGHT

- press the LIGHT button on the Remote Control to activate the vehicle's headlights. (See Diagram 6)

GEAR:

- there are 3 level of speeds from slow to fast, press the GEAR button on the Remote Control to change speeds. (See Diagram 6)

REMOTE CAR LOCK SYSTEM:

- press the LOCK button on the Remote Control to "lock" the car and turn off the engine (See Diagram 6). The lock indicator will flash . (See Diagram 12).
- the vehicle cannot be operated while the car is "locked". (Note: the battery pack will continue to drain unless the car is switched off by using the ON/OFF switch.)
- to "unlock" the vehicle and begin operations again, press the LOCK button once more to turn on the engine.
- if the vehicle does not respond to the unlock command, check to see if the ON/OFF switch is at the "ON" position. If there is still no response, recharge the battery pack of the vehicle and/or replace the batteries of the Remote Control.

REALISTIC DESIGN:

- lift the hood to see the realistic engine. (See Diagram 12)
- The car's interior has enough room to fit a 12 inch doll or action figure

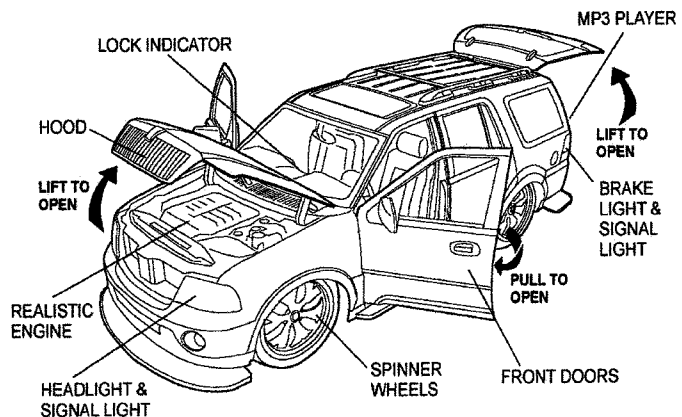


DIAGRAM 12

Performance Tips For Vehicle

- Do not drive the car on grass, sand or carpet.
- Do not drive the car through water.
- Be sure to rest your vehicle for at least 30 minutes after every 15 minutes of operation.

- Make s position
- Do not t
- Electric elevato operati
- Do not l in direc
- Remov not in us

FCC: THE MANU
BY UNAUTH
VOID THE L

OPERATION INSTRUCTIONS

IMPORTANT: THE RECHARGEABLE NI-CD BATTERY PACK IS NOT CHARGED. PLEASE CHARGE IT FOR 4 HOURS PRIOR TO USE.

Battery Charging

1. Plug the battery charger into a wall outlet.
2. Connect the cables of the battery pack and the charger together by snapping the jack and the socket together tightly. Charge at least 4 hours. (See Diagram 1)
3. To disconnect the cables, press down on the clip and pull apart. (See Diagram 1)
4. After charging, the battery will be warm. This condition is normal for fully charged batteries.
5. If the speed of the vehicle slows down suddenly, it is time to recharge.
6. After each use, the battery pack will be hot! Allow the battery pack to cool for at least 20 minutes before recharging. Recharging a warm or hot battery pack will greatly shorten the useful life of the battery.

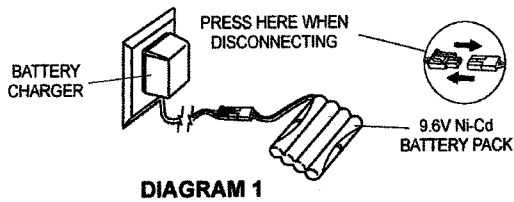


DIAGRAM 1

Battery Pack Care

- Make sure the battery pack and connectors of the charger are dry before recharging.
- Battery packs can be charged for much longer periods without harm. However, we recommend unplugging the battery pack if the battery pack will not be used for several days.

Cautions

- Do not charge a battery pack that is hot, wet or shows leakage or corrosion.
- The battery pack may explode if disposed of in fire!
- Do not disassemble the battery pack.

Battery Installation: Vehicle

1. Locate the ON/OFF switch at the bottom of the car. Make sure the ON/OFF switch is at the "OFF" position. (See Diagram 2)
2. Turn the lid stopper in an anti-clockwise direction to open the battery lid. (See Diagram 3)
3. Lift the battery lid to open and place the battery pack inside securely.
4. Plug the jack of the battery pack into the socket of the battery compartment. (See Diagram 4)
5. Replace the battery lid and turn the lid stopper in a clockwise direction to close.

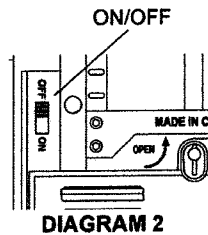


DIAGRAM 2

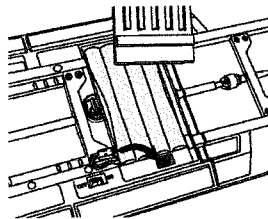


DIAGRAM 4

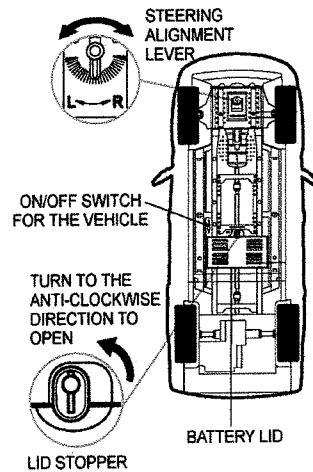


DIAGRAM 3

- Make sure the ON/OFF switch on your vehicle is at the "OFF" position when it is not in use.
- Do not bend the antenna.
- Electrical, CB interference, mobile phones, air conditioning, elevators and steel girders in buildings will affect the operation of your vehicle.
- Do not leave the vehicle or transmitter near sources of heat or in direct sunlight for long periods of time.
- Remove the batteries from the vehicle and transmitter when not in use.

MP3 PLAYER BASIC OPERATION

- A. The MP3 player is located at the back of the car (See Diag. 12).
- B. Slide the ON/OFF button to the "ON" position to turn on the power. The speakers will light-up (See Diag. 13) Please note that all the sound from vehicle will cut off, but the function still activate..
- C. Allow 2 seconds for the program to load, press the "▶/||" button to start playing music. The speaker lights will flash (See Diag. 13).
- D. Press "■" button to stop playing (See Diag. 13).
- E. Volume can be adjusted by pressing the "VOLUME +/-" button.

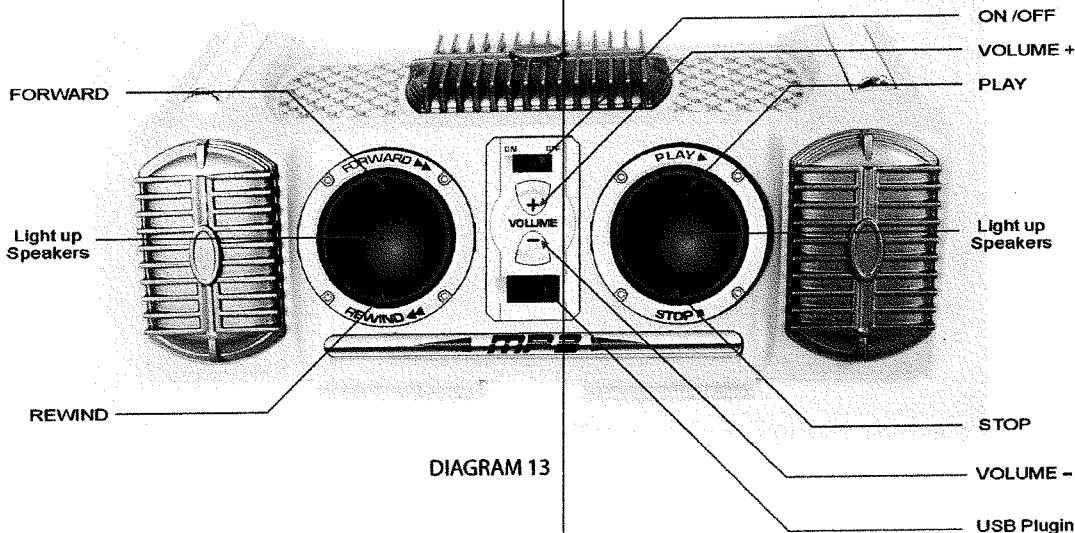


DIAGRAM 13

FCC: THE MANUFACTURER IS NOT RESPONSIBLE FOR ANY RADIO OR TV INTERFERENCE CAUSED BY UNAUTHORIZED MODIFICATIONS TO THIS EQUIPMENT. SUCH MODIFICATIONS COULD VOID THE USER'S AUTHORITY TO OPERATE THE EQUIPMENT.

Batte

1. Slid the acc sec
2. Rep

Vehic

1. Scr the and (See
2. Pas veh anti and into tigh
3. Slid swi pos

- F. Pr
- pr
- G. U:
- H. Si
- th

PO

- If th
- 4 mi
- and
- the
- unit
- befc

FIL

- A. M
- B. C
- si
- C. If
- th
- ai
- D. A
- w
- (S
- E. S
- tr
- (S

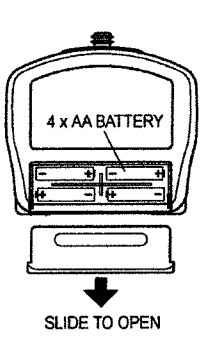


DIAGRAM 5

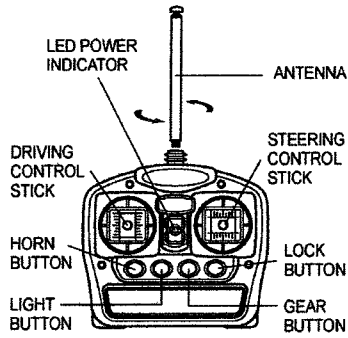


DIAGRAM 6

Battery Installation: Transmitter

1. Slide to open the battery compartment cover at the back of the Remote Control unit and insert four AA batteries according to the diagram in the battery compartment securely. (See Diagram 5)
2. Replace the battery compartment cover.

Vehicle Operation

1. Screw the antenna onto the top of the transmitter and extend it to full length. (See Diagram 6)
2. Pass the cable of the vehicle through the antenna tube provided and insert the tube into the vehicle tightly. (See Diagram 7)
3. Slide the ON/OFF switch to the "ON" position. (See Diagram 2)

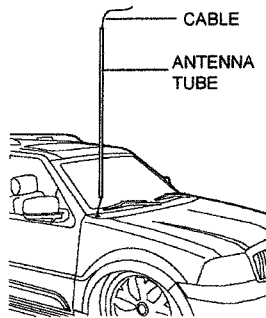


DIAGRAM 7

DRIVING FORWARD

4. Push the DRIVING CONTROL stick forward (away from you). (See Diagram 8)

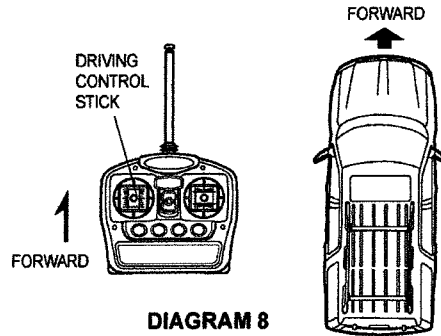


DIAGRAM 8

DRIVING IN REVERSE

5. Pull the DRIVING CONTROL stick back (towards you). (See Diagram 9)

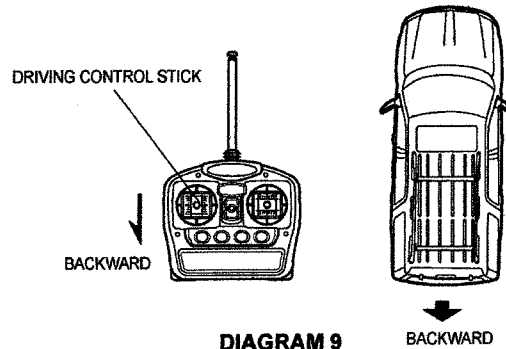


DIAGRAM 9

STEE
6. To
ST
DR

FOI

7. To
CC
stic

BAC

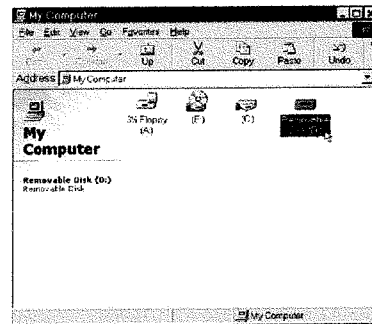
- F. Press the "▶/||" button to temporarily suspend playing; press again to resume playing.
- G. Use the "▶▶" or "◀◀" buttons to switch between songs.
- H. Slide the ON/OFF button to "OFF" position to turn off the player, the speaker lights will turn off.

POWER SAFE MODE

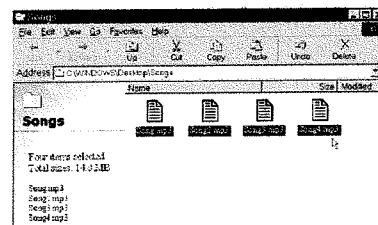
If the MP3 unit is ON and no songs have been played for 4 minutes, the unit will enter the POWER SAFE MODE, and the speaker lights will go off. To restart the unit, slide the ON/OFF button to "OFF" and then "ON" again. If the unit does not respond, please recharge the battery before use.

FILE TRANSFERRING

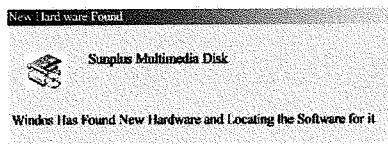
- A. Make sure your PC supports USB.
- B. Connect the MP3 player and the computer with the supplied USB cable.
- C. If your operating system is Windows 2000, Windows XP, the system will detect the existence of a new hardware and will install the driver automatically. (See Diag. 14).
- D. A "Removable Disk " will appear in your computer when correct connections have been set up (See Diag. 15).
- E. Select the MP3 music files from the computer to transfer/copy them to the "Removable Disk" (See Diag. 16).



(DIAGRAM 15)



(DIAGRAM 16)



(DIAGRAM 14)



F. Sp
G. M
be
FO
A. If
sy
W
B. S
to
CA
• All
• Do
• If t
anc
pla
the

STEERING OPERATION

6. To make left or right turns while driving forward, turn the *STEERING CONTROL* stick to left or right while pushing the *DRIVING* stick forward at the same time. (See Diagram 10)

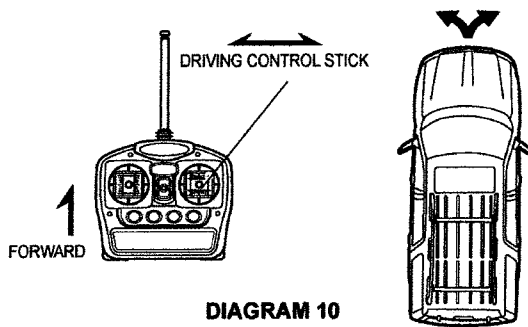


DIAGRAM 10

7. To turn left or right while driving reverse, turn the *STEERING CONTROL* stick to left or right while pulling the *DRIVING* stick backward at the same time. (See Diagram 11)

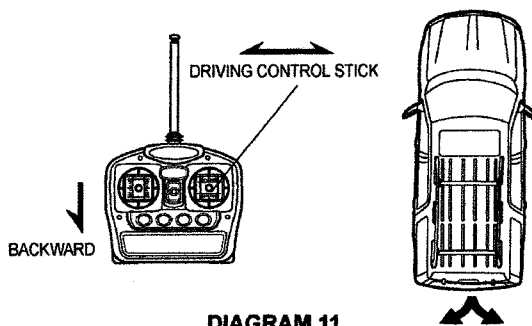


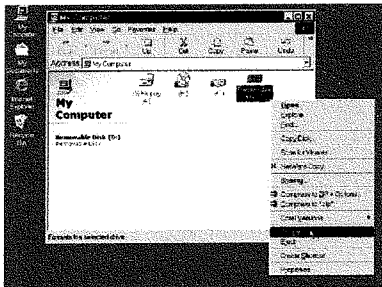
DIAGRAM 11

FRONT WHEELS STEERING ADJUSTMENT

8. If the vehicle does not run straight forward, adjust the *STEERING ALIGNMENT LEVER* on the underside of the vehicle for satisfactory alignment. (See Diagram 3)
9. If the vehicle runs toward left, turn the *STEERING ALIGNMENT LEVER* towards "R".
10. If the vehicle runs toward right, turn the *STEERING ALIGNMENT LEVER* towards "L".

STOP OPERATION

11. Release both *CONTROL* sticks to stop the vehicle.



(DIAGRAM 17)

- F. Speaker lights will flash when files are being transferred.
- G. Make sure the speaker light has stopped flashing before unplugging the USB cable.

FORMATTING THE MP3 PLAYER

- A. If you are unable to download or delete files or if the system crashes, please format the MP3 player by Windows FAT or FAT16 format to repair the problem.
- B. Select the "Removable Disk" which you want to format, right click the mouse and choose "Format.." to format the player (See Diag. 17).

CAUTION

- All the files will be deleted by formatting the MP3 player.
- Do not pull out the USB cable while a file is being downloaded or when the player is formatting.
- If the MP3 player does not work, unplug the USB cable and re-insert it 3 seconds later, reconnect the MP3 player to the PC, then delete the damaged songs in the MP3 player.

SYSTEM REQUIREMENTS FOR MP3

- IBM compatible personal computer.
- Pentium 166MHz MMX or faster.
- Windows 2000 or Windows XP.
- USB port.
- 32MB RAM or more (64MB is recommended for Windows 2000).

Microsoft, and Windows 2000/XP are registered trademarks of Microsoft Corporation. All other brand or product names are trademarks of their respective owners.

FCC NOTE : THE MANUFACTURER IS NOT RESPONSIBLE FOR ANY RADIO OR TV INTERFERENCE CAUSED BY UNAUTHORIZED MODIFICATIONS TO THIS EQUIPMENT. SUCH MODIFICATIONS COULD VOID THE USER'S AUTHORITY TO OPERATE THE EQUIPMENT.

CAUTION: ELECTRIC TOY

Not recommended for children under 6 years of age.
As with all electric products, precautions should be observed during handling and use to prevent electric shock.

INPUT : 120VAC-60Hz-5.5W ONLY
OUTPUT : 12VDC-0.2A

www.toysrus.com

NOTE: This equipment has been tested and found to comply with the limits for a Class B digital device, pursuant to part 15 of the FCC Rules. These limits are designed to provide reasonable protection against harmful interference in a residential installation. This equipment generates, uses and can radiate radio frequency energy and, if not installed and used in accordance with the instructions, may cause harmful interference to radio communications. However, there is no guarantee that interference will not occur in a particular installation. If this equipment does cause harmful interference to radio or television reception, which can be determined by turning the equipment off and on, the user is encouraged to try to correct the interference by one or more of the following measures:

- Reorient or relocate the receiving antenna.
- Increase the separation between the equipment and receiver.
- Connect the equipment into an outlet on a circuit different from that to which the receiver is connected.
- Consult the dealer or an experienced radio/TV technician for help.