

OPERATION / HEADSET (Cont'd)

CALL BACK (LAST INCOMING)

Press the Volume (+) AND Volume (-) Buttons until a beep is heard. Redialing the last INCOMING call should begin automatically.

NOTE: Your Bluetooth® phone must support last incoming call capability to use this feature. Consult your phone's user guide for information specific to your phone.

HANDS-FREE CAR KIT (Headset placed in vehicle dock)

Install the Docking Station into an available cigarette lighter socket or 12V DC power outlet in the vehicle. Place the headset into the dock MIC first (nose first).

NOTE: Ear hook may need to be rotated out of the way to allow a good fit into the dock. Make sure the headset sits flat in the dock and makes contact with the row of tiny pins. Your CBH Bluetooth® Headset will function as a hands-free car kit when the headset docked. Your hands-free conversations will utilize the MIC and SPEAKER built into the dock.

POWER ON:

Press the Power Button. The GREEN indicator will turn on indicating the dock has power.

HEADSET CHARGE:

Your CBH Bluetooth® Headset battery will re-charge when docked into the base.

VOLUME:

During conversation, use the volume dial on the right side of the dock to increase or decrease the speaker volume.

OPERATION:

You can perform the following functions accessing the power button on the CBH Headset while it is docked in the base:

- Call Answer
- Call End
- Call Reject
- Voice Dial
- Last number redial
- Call Swap

LED CHART

LED/COLOR	STATUS
Blue LED blinks every 5 seconds	Connected with mobile phone (Standby)
Blue LED blinks every 1 second	Connected with mobile phone (Conversion/Call)
Blue LED blinks quickly	Pairing mode
Red LED Solid	Battery Charge
Red LED Off	Charging Complete

LIMITED WARRANTY

Scosche Industries Inc. warrants this product to be free from defects in material and workmanship for a period of 90 days from purchase. This Scosche product is sold with the understanding that the purchaser has independently determined the suitability of this product. This warranty is offered to the original purchaser of the product only. This warranty does not cover the product if physically damaged, subjected to negligence or misuse, abuse, alteration, accident, or an act of God. This warranty does not apply to product which has been water or physically damaged, damaged by accident or which has been misused, disassembled or altered.

The original dated sales slip or proof of purchase will establish warranty eligibility. If the product should prove defective within the warranty period, return the product with proof of purchase to Scosche Industries Inc. Scosche, at its option, will replace or repair the product free of charge and return the product postage paid.

In no event shall Scosche Industries, Inc. be responsible for claims beyond the replacement value of the defective product, or in any way be liable or responsible for consequential or incidental damages.

No express warranties and no implied warranties, whether for fitness or any particular use, or otherwise, except as set forth above (which is made expressly in lieu of all other warranties) shall apply to products sold by Scosche. Scosche Industries cannot be held responsible for discrepancies/inconsistencies that may occur due to automotive manufacturing changes or options.

This device complies with FCC Rules Part 15. Operation is subject to the following two conditions: 1) This device may not cause interference, and (2) this device must accept any interference that may be received, including interference that may cause undesired operation. The manufacturer is not responsible for any radio or TV interference caused by unauthorized modification to this equipment. Such modification could void the user's authority to operate the equipment.

SCOSCHE®

CBH

CELLULAR BLUETOOTH® HEADSET WITH HANDS FREE KIT

Congratulations on your purchase of CBH Cellular Bluetooth® Hands Free kit. This system incorporates the latest Bluetooth® technology for seamless integration with most Bluetooth® enable cell phones. Before using, please read this manual carefully.

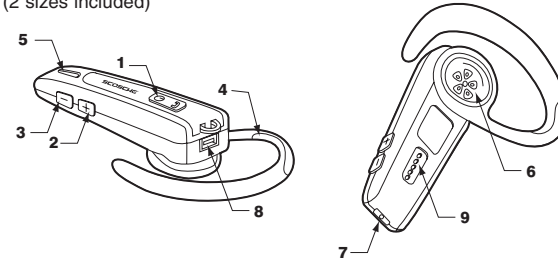
FEATURES:

- Cigarette Lighter Dock/Charger Station
- Rechargeable Battery with up to 8 hours talk time and 210 hours stand-by time.
- Call Functions: Send, End, Reject, Redial, and Voice dial
- Seamless switching between headset and phone
- Microphone mute
- 3-Way calling (on supported phones)
- Call-back last incoming call (on supported phones)
- USB charging cable included
- 2 ear hooks included / works with LEFT or RIGHT ear (Universal)

SYSTEM OVERVIEW

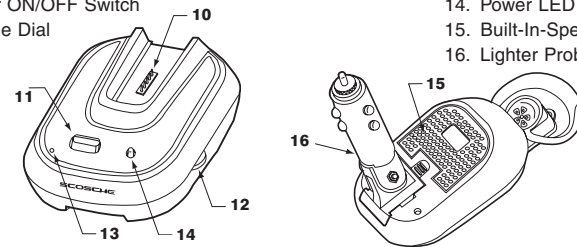
HEADSET DIAGRAM:

1. Switch ON/OFF Headset, Answer Call, Reject Call (Multi-Function Button)
2. Volume Up, pair the headset with Bluetooth® Device
3. Volume Down
4. Ear Hook (2 sizes included)
5. LED Indicator (RED/BLUE)
6. Headset Speaker
7. Microphone
8. Mini USB Port (charge the battery)
9. Contact Pins for Dock Station



CIGARETTE LIGHTER DOCK/CHARGER STATION:

10. Contact Pins for Headset
11. Power ON/OFF Switch
12. Volume Dial
13. MIC
14. Power LED
15. Built-In-Speaker
16. Lighter Probe



This product may not be compatible with all Bluetooth® features on all Bluetooth® enabled cell phones. This may or may not include send/end control functions, volume adjustment and voice dialing. Please consult your Bluetooth® enabled cell phone operation manual for specific features and instructions.



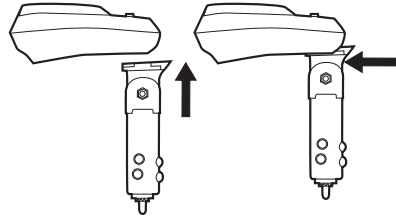
If you have any further questions, all our TOLL-FREE number:
TECHNICAL HELP line 1-800-621-3695 x3

©2006 SCOSCHE INDUSTRIES, INC.
OXNARD, CA 93033
300CBH 3/06 Rev A

GETTING STARTED

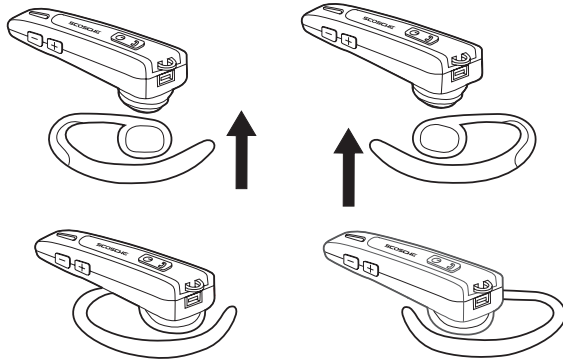
ASSEMBLING THE CIGARETTE LIGHTER DOCK STATION:

1. Align the notches on the top of the lighter probe with the notches in the bottom of docking station and slide forward to lock into place as shown.



ASSEMBLING THE EAR HOOK:

1. Test fit the 2 ear hooks over your left or right ear and choose the one that fits comfortably.
2. Rotate the ear hook 90 degrees and simply snap onto the headset as shown.
3. Point headset (MIC) in the direction of your mouth for best operation. (Microphone is located in the tip.)



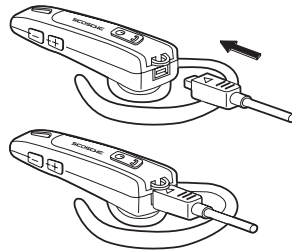
GETTING STARTED (Cont'd)

CHARGING THE BATTERY:

Before using the headset for the first time, you should charge the battery for a full 2 hours. Charge the headset either in the docking station or using the USB/PC charging cable provided in the kit.

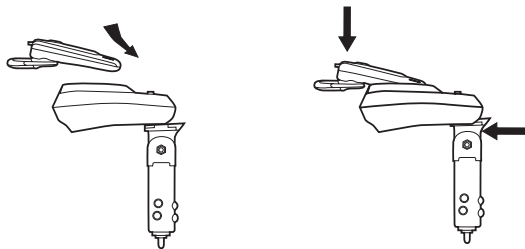
PC-USB CHARGING:

Plug the USB charging cable into your computer and plug the other end into the earpiece as shown. The LED indicator will illuminate in RED while the battery is charging.



DOCK STATION CHARGING:

Place the headset into the docking station when vehicle cigarette lighter socket has power as shown. The LED indicator will illuminate in RED while the battery is charging.



PAIRING THE HEADSET WITH BLUETOOTH DEVICES

The headset must be paired with a Bluetooth® enabled mobile phone before use. Keep the CBH and phone in the range of 3 feet (1 meter) when pairing.

1. Power on the CBH Headset.
2. Press and hold the volume (+) key for 5 seconds. The BLUE indicator light will blink and (2) beeps will be heard indicating the headset is in pairing mode.
3. While headset LED is flashing, follow the instructions for your cell phone to seek (or discover) any nearby Bluetooth® devices. If needed, consult your cell phone's manual for information on pairing or discovering Bluetooth® devices for your particular phone.
4. After searching, your phone should display a list of local Bluetooth® devices. The phone should display the Scosche CBH device as: BH5300
5. Select BH5300 and confirm the connection. Enter the password "1234". Bluetooth® pairing should now be complete.
6. If your phone fails to locate the Scosche CBH headset, then check to make sure your phone is seeking Bluetooth® devices. Check to make sure the Scosche CBH is in pairing mode. Repeat steps 1-5. If you cannot successfully pair the two devices, call Tech Support at (800) 621-3695 Ext 3.

OPERATION / HEADSET

POWER ON:

Press and hold the Power Key for 5 seconds. The indicator light will blink once Red, then Blue. You will hear the 3 chimes

POWER OFF:

Press and hold the Power Key for 5 seconds. You will hear one beep at approximately 3 seconds and CONTINUE to hold the key for 2 additional seconds, and then the headset will beep 3 times indicating power is off. The headset will disconnect with any paired device when powered off.

CALL ANSWER:

When the headset is ringing, simply press and release the Power Button to ANSWER an incoming call.

CALL ENDING:

During conversation, simply press and release the Power Button to END the call.

CALL REJECT:

To reject (non-answer) an incoming call, press the Power Button for 3 seconds while the headset is ringing to REJECT the call.

VOLUME:

During conversation, press "+" to increase volume or press "-" to decrease volume.

VOICE DIAL:

Press and hold the Power Key for 3 seconds. You will hear one beep, then state the voice name of the contact you're calling.

NOTE: Your Bluetooth® phone must support voice dialing capability to use this feature. Consult your phone's user guide for information specific to your phone.

LAST NUMBER REDIAL:

Press and release the Power Key. Redialing of the last number called should begin automatically.

HANDS-FREE TAKE-OVER:

During a conversation you can switch to the CBH hands-free headset by simply pressing the power button if the CBH headset is already powered on. If the headset is off, then power it on and the headset should take over after it connects to your mobile phone.

MICROPHONE MUTE:

During conversation, press "+" volume for 5 seconds. A beep will be heard indicating the MIC has been muted.

CALL SWAP:

During conversation, press the Power Button 2X to answer the second incoming call.

NOTE: Your Bluetooth® phone must support hands-free call swapping capability to use this feature. Consult your phone's user guide for information specific to your phone.

3-WAY CALL:

During conversation, press the Power and Volume (+) Button until a beep is heard.

NOTE: Your Bluetooth® phone must support hands-free 3-way call capability to use this feature. Consult your phone's user guide for information specific to your phone.