

# Wireless KM-2 PC USB Headset

USB Plug & Play 2-Way Interactive CD-Quality Audio



1 ▶

## Certification and safety approvals

KM-2 is the wireless headset that delivers high quality 2.0-channel stereo audio with extra sound clarity and soft, deep bass effects. It provides a voice back channel that allows you to talk in conjunction with any kinds of PC voice applications. Examples of such applications include Skype, MSN, on-line gaming, and more. With the high performance audio and the unique feature set, KM-2 brings you a great value. To start, we like to introduce to you the important certification and safety approvals on this headset.

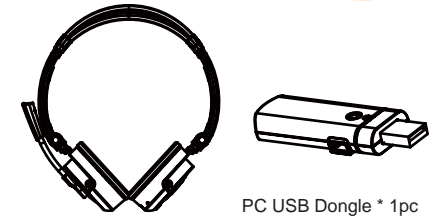
2 ▶

## Unique Features

- Unique 2.0-Channel design - Each ear cup contains specially designed speaker driver to deliver extra audio clarity.
- USB Plug-and-Play wireless headset that supports PC music/game sounds and back-channel voice simultaneously, no need to switch back and forth.
- USB Dongle(Transmitter) direct plug-in to the PC for instant use of VoIP, on-line game, DVD, and all kinds of entertainment running Windows 2000/XP,Vista.
- Ease of use, no software installation needed.
- Long standing use, up to 5.5 hours of continuous listening time per charge.
- Easy charging through dongle DC out. Microphone switch on/off control.
- 30 to 45 feet distance for effective use.

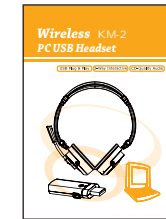
3 ▶

## Product Accessories

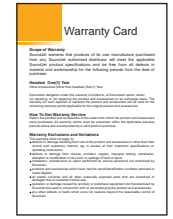


PC USB Wireless Headset \* 1pc

PC USB Dongle \* 1pc



User Guide \* 1pc



Warranty Card \* 1pc

4 ▶

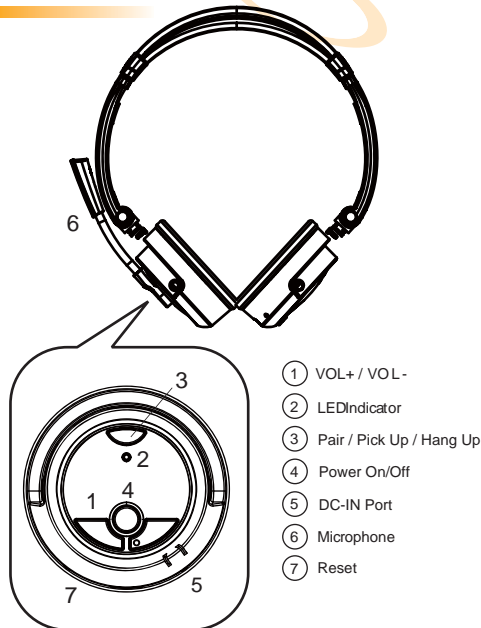
## Specification

Model	KM-2
Wireless Technology	WiStereo™ for advanced 2-way digital transmission in the 2.4 GHz frequency band
Listen Time (per charge)	Up to 5.5 hours
Standby Time	Approximately 3 months
Charge Time (full charge)	Approximately 2.5 hours
Distance of Use	30 ~ 45 feet
Headset Weight	122 g
USB Dongle Weight	13 g
Charging Method	Through Dongle DC Out
Battery Type	Lithium Polymer
Headset Speaker	40mm Neodymium
Frequency Response	20Hz~20,000Hz (perfect for all music, game, and voice)
Audio Quality	Uncompressed audio for music (CD-quality) and voice (extra clarity)
Distortion (T.H.D.)	≤0.08% (professional grade audio performance)

Maximum Range:  
Results may vary according to environment.

5 ▶

## Parts Introduction



6 ▶

- VOL + / VOL -**  
Press to increase the headset volume.  
Press to decrease the headset volume.
- LED Indicator**  
A red indicator represents power functions.  
A green indicator represents signal connections.
- Pair / Pick Up / Hang Up**  
Press pair button to connect the wireless headset and the USB Dongle.  
Answer SKYPE---Press pair button to answer the call  
Hang up SKYPE---Press pair button to end the call
- Power On/Off**  
Press this button to control power on/off.
- DC-IN Port**  
Connect the cable Connect the DGIN from dongle for recharging.
- Microphone**  
mic on : Press the "power button" 0.3 -3 seconds  
mic off : Press the "power button" 0.3 -3 seconds
- Reset**  
Press to reset the headset, in case this headset is not functioning properly.

7 ▶

## User Guide Symbols

### Steady red light



- The headset is charging

### Steady green light



- Devices are paired

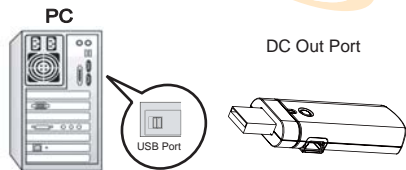
### Flashing green light



- Devices are waiting for pairing
- Devices are not paired
- Green & orange flashing alternately : mic off

## Getting Started

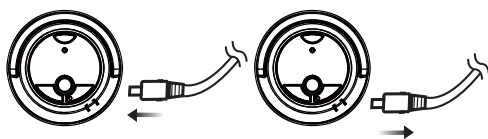
### Charging



- **First time use** : Charge 4 hours before using the headset.

Plug in to charge

Unplug when finished



- **Regular use** : Charge the headset approximately 2 hours if the battery was completely used up.

Once the battery is off, you can charge the battery through the cable and listen at the same time.

### Unplug the USB charging cable if any of the following conditions exist

- The USB cable or plug has become frayed or damaged.
- The USB cable has been exposed to rain, liquids, or excessive moisture.
- You suspect the headset needs service or repair.
- You want to clean the headset.

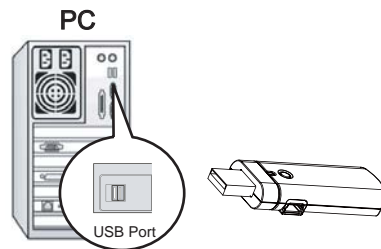
### Avoiding hearing damage

Permanent hearing loss may occur if a headset is used at high volume. Set the volume to a safe level. You can adapt over time to a higher volume of sound that may sound normal but can be damaging to your hearing. If you experience ringing in your ears or muffled speech, stop listening and have your hearing checked. The louder the volume, the less time is required before your hearing could be affected.

 The headset is charging

- Steady red light is turned off when the headset is fully charged.

### Connect the USB Dongle



Connect the USB Dongle with PC for signal transmission.

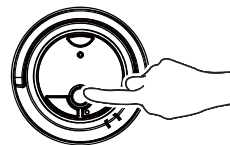
Hearing experts suggest that to protect your hearing:

- Limit the amount of time you use the headset at high volume.
- Avoid turning up the volume to block out noisy surroundings.
- Turn down the volume if you can't hear people speaking near you.

### Maintaining battery life

Due to the physical nature of battery, the charging time may become longer and the actual capacity of battery may decrease. If you have any questions regarding the replacement of the built-in battery, please contact our service center.

### Turn on/off the headset



- Turn on : press the power button
- Turn off : press the power button for at least 3
- Steady red light is turned off when the headset is fully charged.
- Mic on : Press the "power button" 0.3 - 3 seconds
- Mic off : Press the "power button" 0.3-3 seconds

- press PAIR button for 5 seconds for pairing (press PAIR button for 5 seconds at dongle side at the same time)
- PAIR button combined with SKYPE Answer and End
- Press and release momentarily for answer SKYPE
- Press PAIR button for 2 seconds for end SKYPE

## Troubleshooting

### No signal connection to the headset

Make sure the headset is charged and the USB Dongle is properly connected to the PC. Within the range of signal coverage, power on the headset again.

### The headset is automatically switched off

The battery is too low. The indicator light on the headset is off.

### Unexpected behavior

Reset the headset. (see p.5)

### No audio at the headset

- Check the headset and the computer volume control. Make sure they are not in the lowest volume level or muted.
- Check the pair status of the USB Dongle and the headset. Make sure two devices are paired properly.
- Check if the PC Media Player is properly installed, and audio file is playable.
- The listening party can not hear you over the internet. Check if the microphone switch is on.

## Important User Information

### Handling the headset

Do not bend, drop, crush, puncture, incinerate, or open the headset.

### Repairing the headset

Never attempt to repair the headset yourself. The headset does not contain any user serviceable parts. For service information, choose the headset help from the warranty card. The rechargeable battery in the headset should be replaced only by authorized service providers.

### FCC Statement

This device complies with Part 15 of the FCC Rules. Operation is subject to the following two conditions: (1) this device may not cause harmful interference, and (2) this device must accept any interference received, including interference that may cause undesired operation.

FEDERAL COMMUNICATIONS COMMISSION INTERFERENCE STATEMENT This equipment has been tested and found to comply with the limits for a Class B digital device, pursuant to Part 15 of the FCC Rules. These limits are designed to provide reasonable protection against harmful interference in a residential installation. This equipment generates, uses and can radiate radio frequency energy and, if not installed and used in accordance with the instructions, may cause harmful interference to radio communications. However, there is no guarantee that interference will not occur in a particular installation. If this equipment does cause harmful interference to radio or television reception, which can be determined by turning the equipment off and on, the user is encouraged to try to correct the interference by one or more of the following measures:--Reorient or relocate the receiving antenna.--Increase the separation between the equipment and receiver.--Connect the equipment into an outlet on a circuit different from that to which the receiver is connected.--Consult the dealer or an experienced radio/TV technician for help."

### CAUTION:

Any changes or modifications not expressly approved by the grantee of this device could void the user's authority to operate the equipment.

### CE

This Product is CE marked according to the provisions of R& TTE Directive. (99/5/EC)