
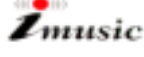





Table of Contents

- About the MP3 Files 4
- About  5
- Before You Use Our Product 6
- Parts 7
- How to Connect with a PC 8
- Installing the Software CD 9

- Using the  USB 11
- Using the MP3 Player 18

- When You have a Problem Using  31
- Cautions 32
- Customer Service 33
- Specifications 34
- Warrantee 35



About the MP3 Files

The MP3 file (MPEG1 Layer3) is the sound file that is created by using audio data compression technology.

MP3 files are used in various applications. You can make your favourite music into an MP3 file. You can download MP3 files from the Internet or a PC online service and store them in your PC or portable MP3 player. You can enjoy this high-quality music anytime. In addition, MP3 files are used in applications such as foreign language learning and contents for Internet broadcasting.


▶ Unauthorised copying and distributing of MP3 files are violations against copyright law.

HEADPHONE and this (●) symbol are trademarks of SRS Labs, Inc.

HEADPHONE technology is incorporated under license from SRS labs,
Inc.



About *music*

 *music* is the next generation digital audio player that does not require any cassette tapes or CDs.

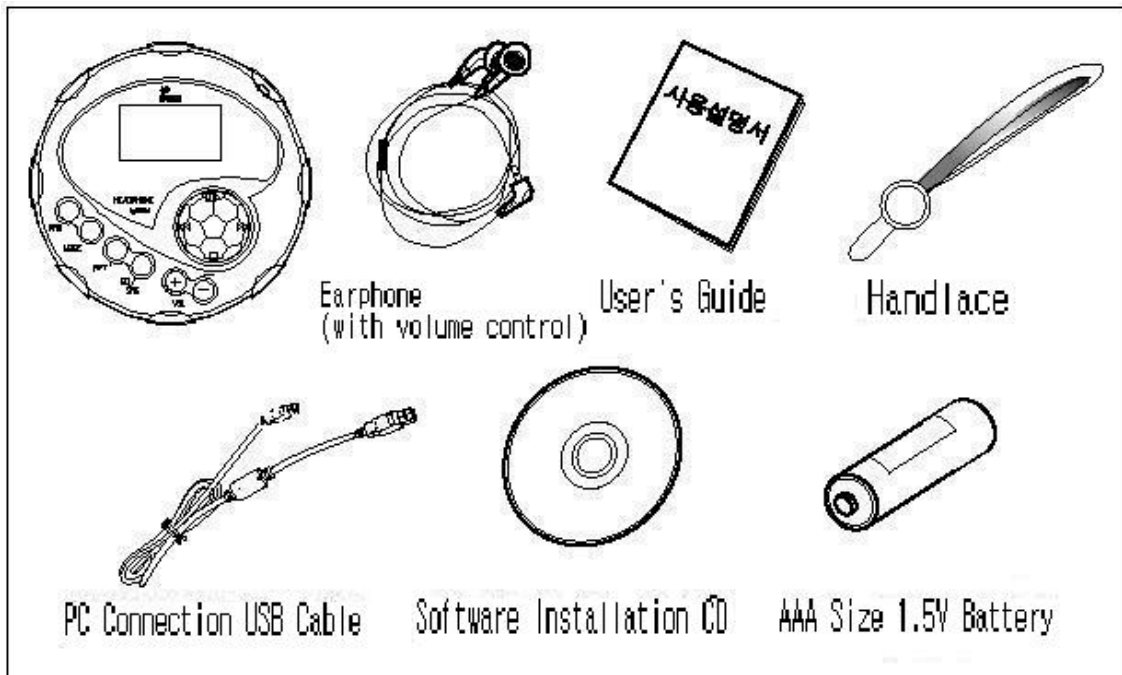
You can purchase and store MP3 files from the Internet or PC online services. You can store music in the built-in flash memory.

Due to it not having any moving mechanical parts, the music does not stop or become distorted even if you do active sports. In addition, the sound quality will not be degraded regardless of how many times you play the music.

Before You Use Our Product

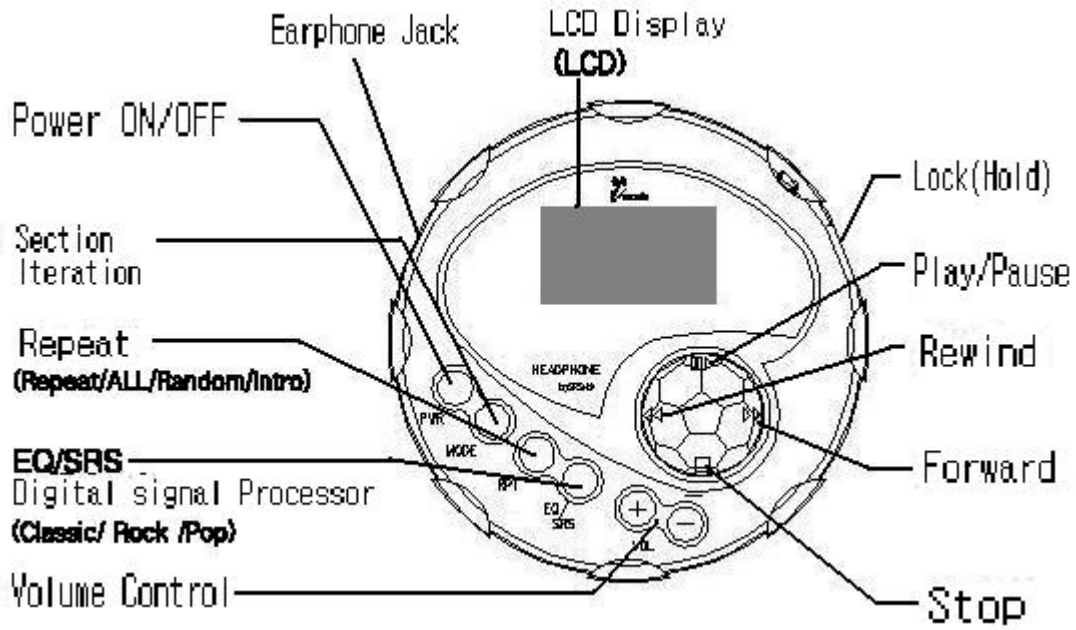
● Content of Package

Please compare the contents of your *i^{music}* package with the list below.
If any of them are missing, contact your local dealer.

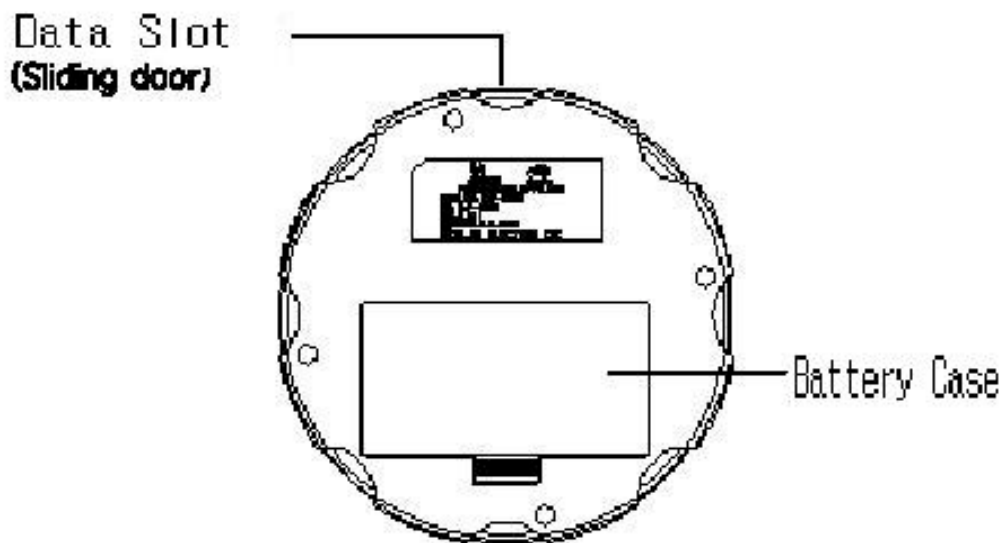


Parts

● Front

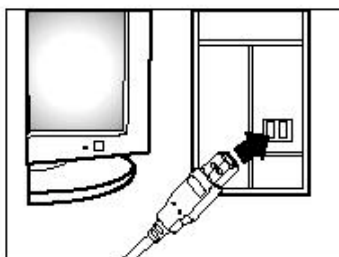


● Back

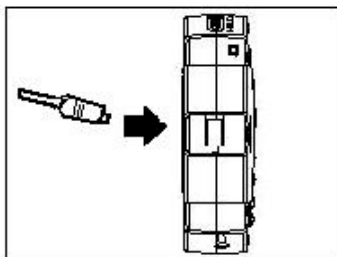


How to Connect with a PC

To download the MP3 file from your PC, you need to use the PC connection cable to connect the USB port of your PC and your *music*.



Connect the PC connection cable to the USB port of your PC.






Turn on your *music* and connect the PC connection cable to the data port.



'CONNECT' will be displayed on the LCD display if it is connected normally.

- To connect your *music* again after disconnected from your PC, connect the PC connection cable again or use the 'CONNECT' menu in the *music* USB program.

Installing the Software CD

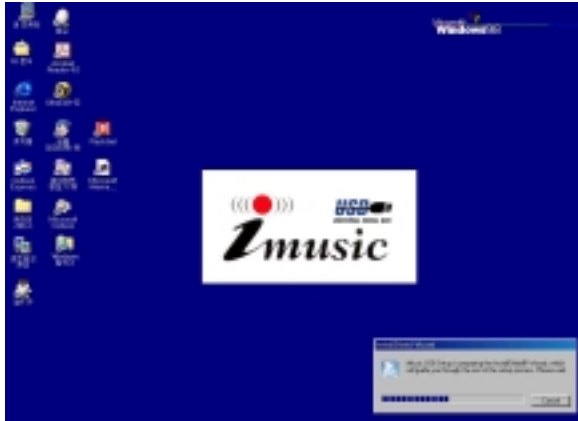
You need to install the  USB program in your computer to store MP3 files. This software CD contains the  USB program that transmits files between  and your PC as well as MP3 sample files and the user's manual.


● System Requirements

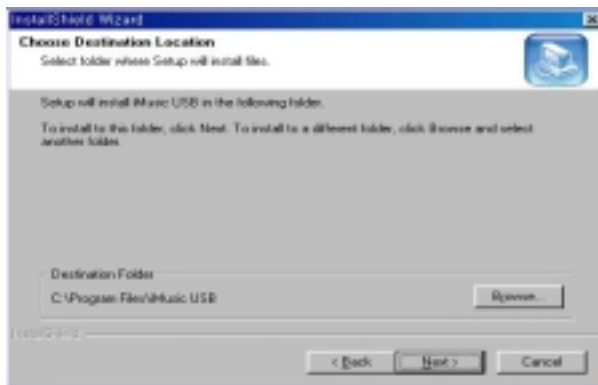
- Pentium 90 MHz or higher
- Windows 95/98/ME/2000/XP
- 40MB of hard disk or more
- CD-ROM driver


▶ If the system does not match the requirements, the MP3 file transmission may either fail or be very slow.

● Installing the USB



Insert the software CD into the CD-ROM drive. The  program will automatically start.

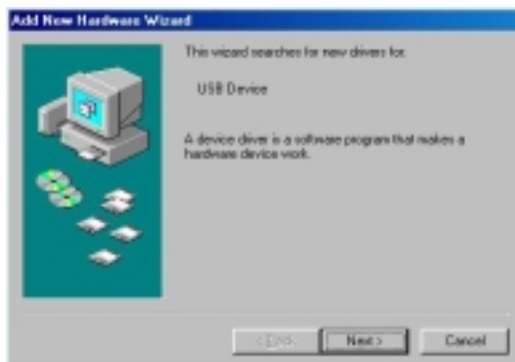



 USB appoint the directory to automatically install the program. Or select the directory as you want. Click on 'Next'.

When the installation is completed click on 'Finish' to exit from the program.

● Installing the Driver

STEP1

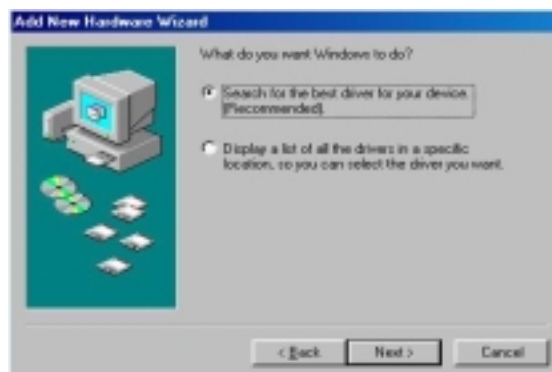


After you have installed the  USB, connect the MP3 Player to USB port of your PC.

You will see the screen on the left side.

*WINDOWS XP : After you choose the “ Install from a list or specific location(Advanced)” , click on ‘ Next’ .

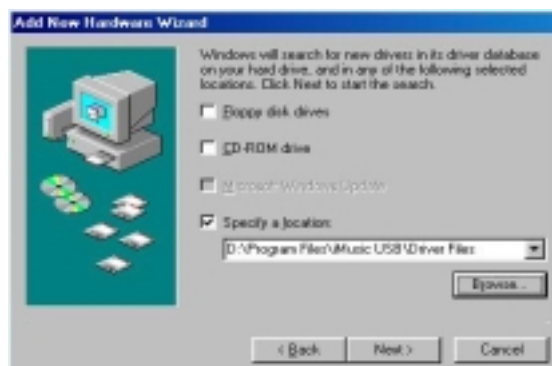
STEP2



After you click on “ search for the best driver for you device.” , click on ‘ Next’ .

*WINDOWS XP : After you choose “ Search for the best driver in these locations.” and “ Include this location in the search.” , click on ‘ Next’ .


STEP3



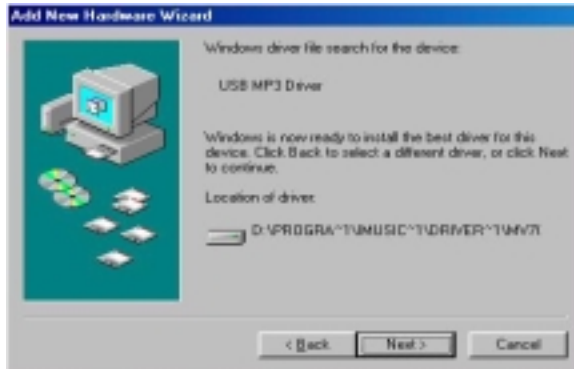
You will see the window to appoint the path of its driver database.

After you click on “ Specify a location” , specify the path as following.

[c:] -> {Program Files} -> [ USB] -> [Driver Files]

(After full installation of  USB software, you will find a new folder as above and data file will be in the folder.)

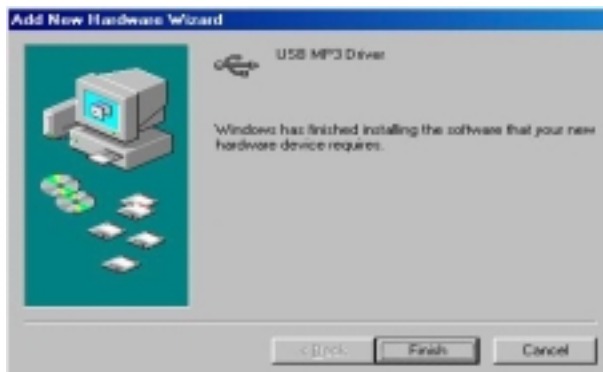
STEP4



Click on ' Next' .

*WINDOWS XP : If WINDOWS LOGO TEST window appears, do not stop installation and click on ' Continue Anyway' and continue installation.




STEP5



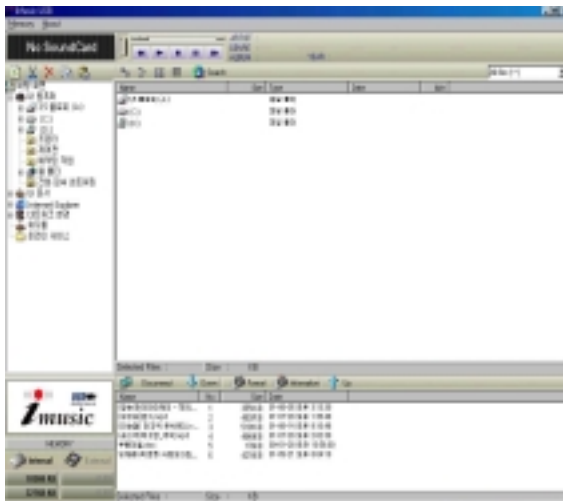
You finish the installation of driver if click on ' Finish' .


Using the USB



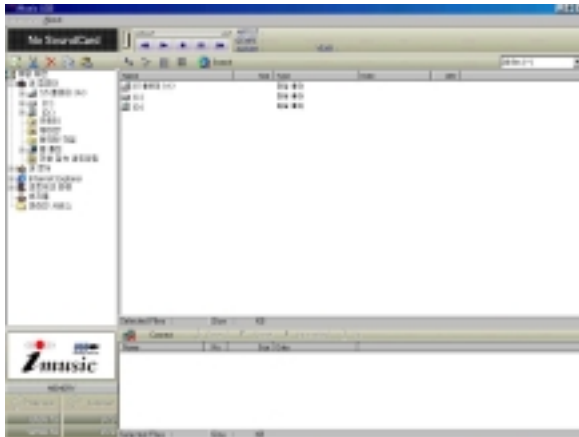
After you have installed the  USB, click on the ‘  USB’ icon from the desktop or click on ‘ Start’ -> ‘ Programs’ -> ‘  USB’ to start the program.

● Using the PC Program



After the program is successfully installed in your PC, click on ‘ Start’ -> ‘ Programs’ -> ‘  USB’ to start the program. The initial screen will appear.

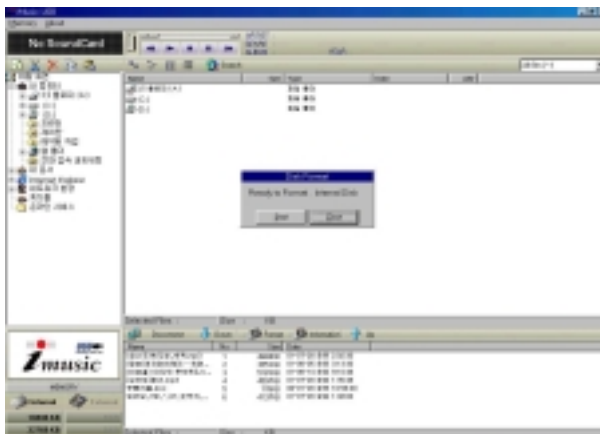
If connected the MP3 Player to USB Port of your PC, the files in memory will be displayed to the screen automatically.



If not connected the MP3 Player to USB Port of your PC, you will see the screen on the left side.

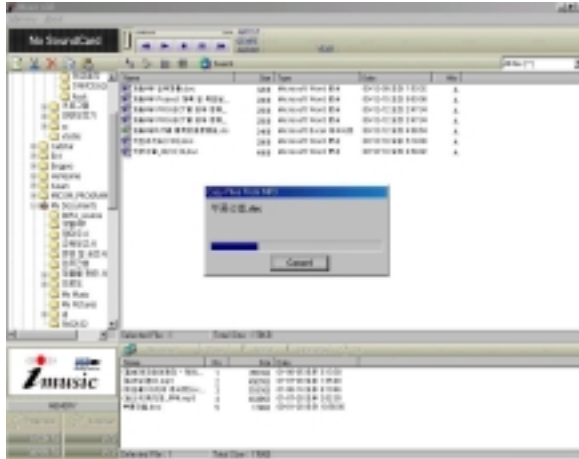
If you want connection, connect MP3 Player and click on 'CONNECT'. Then will connected MP3 Player.


● Initialising the Memory



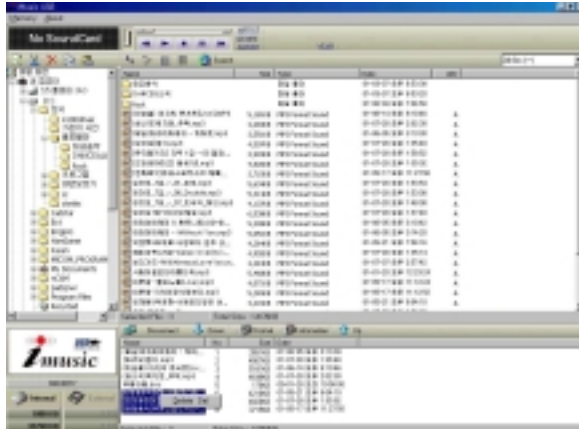
You need to initialise the memory at least once to store music file (MP3) to the flash memory. To initialise the memory, select 'Internal'. Click on 'Memory' -> 'Format' or click on the Format button. After that click the 'Start' button.


● Uploading Files from the MP3 Player to the PC




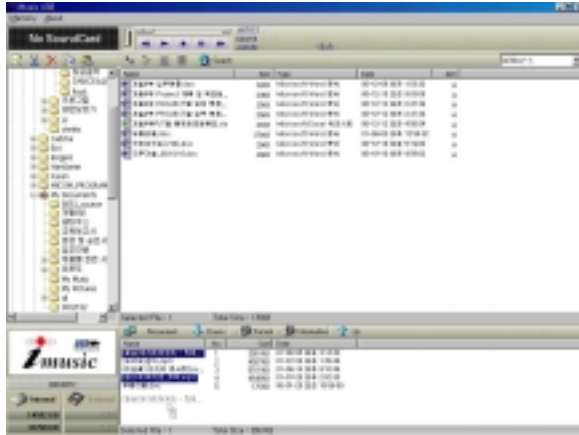
Select files other than  and press the 'Upload' button at the middle of the screen or drag the files to the directory in which you want to upload them. However, MP3 files will not be uploaded.

● Deleting Files



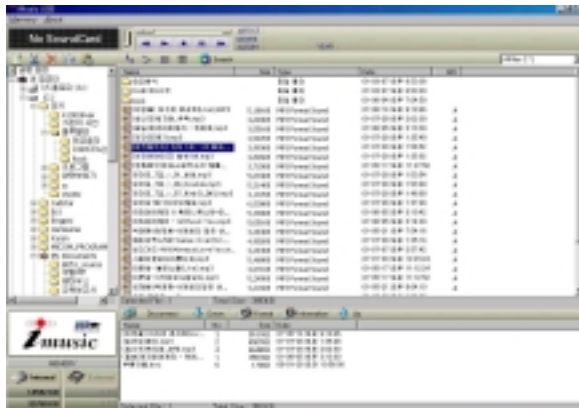
To delete a file in , select the file you want to delete with the mouse. Click the right mouse button and select 'Delete' or press the 'Del' key of your PC.

● Changing the order of sound files in  USB memory



To change the order of a file in window of memory, drag and drop it to the position you want.
And press Internal memory button.

● MP3 Player Functions

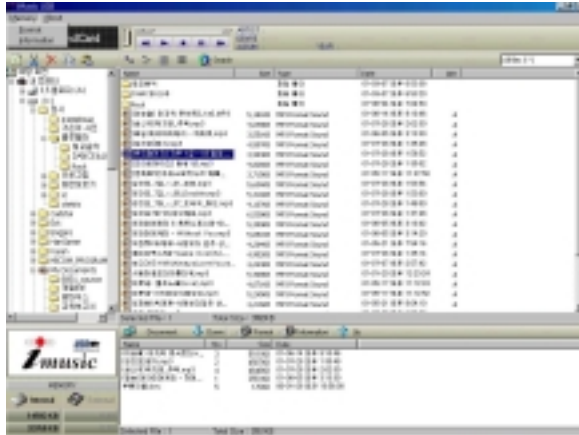


MP3 Player Functions
You can double click on the sound file (MP3, WAVE) in your PC to play it.
You can listen to several sound files, choose sound files and press the ' Play' button.
And you can listen to the MP3 file at the same time that the MP3 file is being downloaded.



- * Display of ID Tag : Display the ID Tag if play the MP3 file.
 - * Player button : you can control the MP3 file that is currently playing.
- Please see the following:

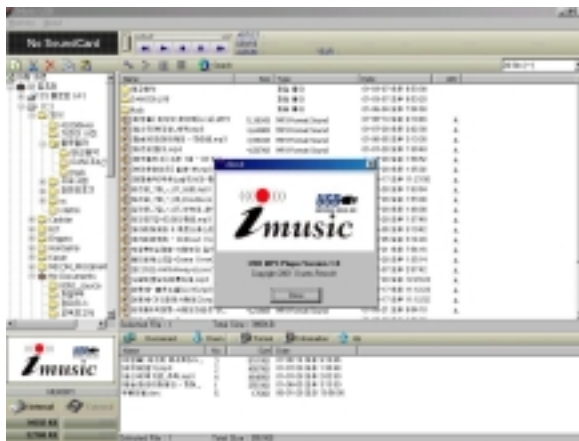
1. Play : Plays the selected file.
2. Pause : Pauses the MP3 file playback. Press this button again to restart the playback.
3. Stop : Stops the playback of the current file.
4. Next : ' Next' button is either skip to the next file if selected several sound files or stop the playback of the current file if selected a sound file.
5. Prev : ' Prev' button is either go to the previous file if selected several sound files or stop the playback of the current file if selected a sound file.

● Menu Descriptions



1. Memory menu

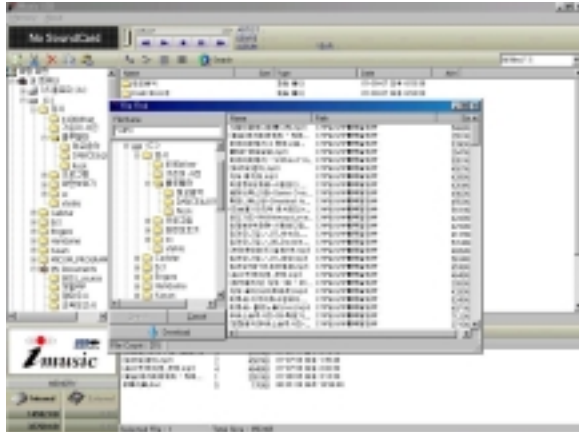
- Format (to initialise internal memory of ).
- Information (to display information about  memory).



2. About menu

- To display information about software of  USB.

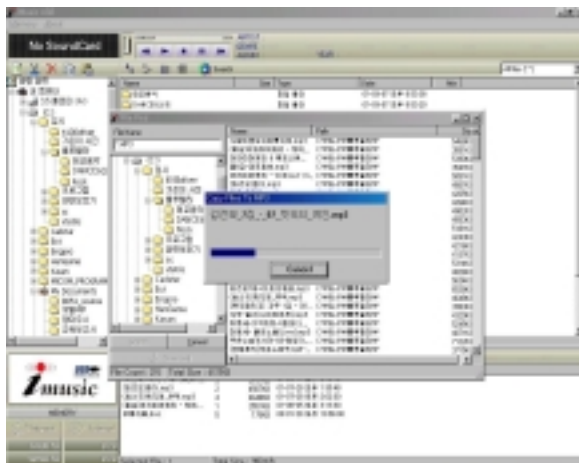
● Search file Function



If you press the ' Search' button, you will see the screen on the left side.

Write filename at ' search window' as you want.(EX : *mp3, *wav, *txt ...)

If you press the ' Enter' key of your PC or click on the ' Search' button in the ' search window' , the program will search for files.



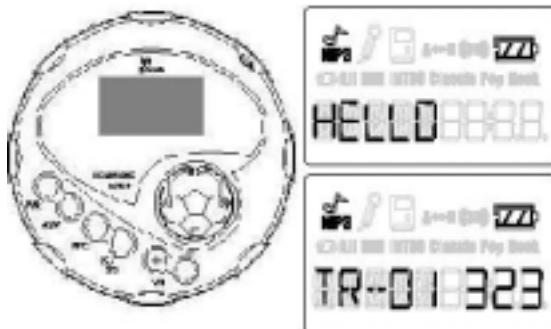
Select files that you want to download among the searching files.

If click on the ' Download' button in the ' search window' , program will download the file.

Using the MP3 Player

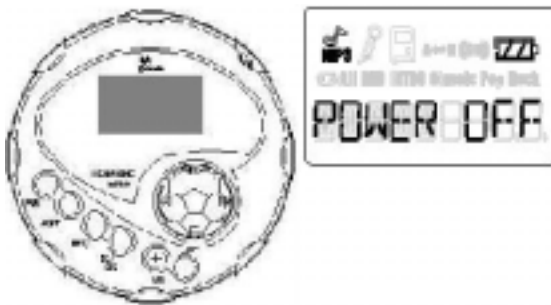
1. Power On/Off

Power ON: Press the 'POWER' button (PWR) for longer than 0.5 seconds to switch on the player. 'HELLO' will be displayed and the player will play the music.



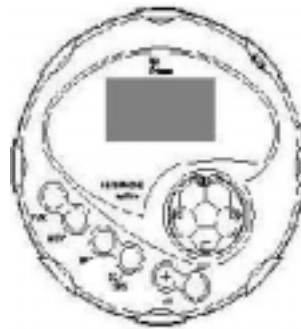
Power OFF:


- Press the 'POWER' button (PWR) for longer than 0.5 seconds to turn off the power.
- In the state other than 'PLAY' or 'PAUSE' (that is, in 'STOP', 'NO File...'), the player will be automatically turned off after three minutes if there is no key input.

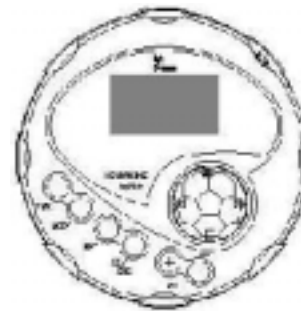


2. MP3 Playback(▶||)

Press the 'PLAY' button(▶||) to pause the MP3 playback. To restart the playback press the 'PLAY' button(▶||) again (LCD will display ' PAUSE' at this stage).

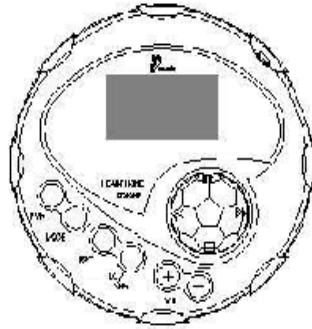


- LCD displays ' STOP' , and the playback will be stopped when you press the ' STOP' button(■) during the MP3 playback. When you press the ' Play' button(▶||)  will play the file from the beginning.



- When all files are played in the Normal Mode the LCD will display ' END' .

- The **music** will be turned off if there is any key input for three minutes after ' END' is displayed.




- When **music** is powered on, it searches the internal memory and plays the music.


- If there is no music (MP3 file) in the internal memory, the LCD will display ' NO FILE' .



3. (▶▶◀◀) Button

- Press the (▶▶) button briefly (for less than two seconds) during MP3 playback to skip to the next piece of music.
- When you press the (◀◀) button briefly (for less than two seconds),

 will playback the current music from the beginning when it is played for longer than 10 seconds. Otherwise, it skips to the previous music.

- Press and hold the ▶▶ (◀◀) button during MP3 playback to move quickly to the wanted position of the current music.
- The LCD displays ' STOP' and the playback will be stopped when you press the ' STOP' button(■) during MP3 playback. When you press the ' Play' (▶||) button,  will play the file from the beginning.

4. RPT/CALL Button

– Press RPT/CALL button to select repeat functions (LCD Display).

- Normal → Repeat → Repeat All (ALL) → Random (RND) → Intro

- Normal:  plays all titles once from the first to the last.

- Repeat:  repeats the current title.

- Repeat All:  repeats all titles once from the first to the last.

- Random (RND): Select this mode to play titles in random order.

- Intro:  plays the first ten seconds of all titles.

5. EQ/SRS Button

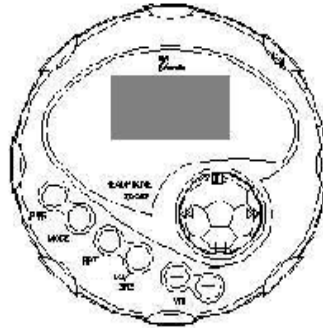
- Sound Control: Normal → Classic → Pop → Rock → 3D

6. MODE Button


- Use the 'MODE' button to select a section repeat (Icon A -> Start, A <-> B: End) during MP3 playback.
 - Icon A -> is displayed when you press the button: starting point of the repeat.
 - A <-> B is displayed when you press the button again and the selected section will be repeated.
 - Press the button again during the repeating of the section to release the section repeat mode. The A <-> B icon will disappear.

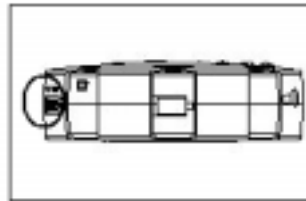
8. Volume (+, -) Button

- Use this button to control the volume.
- The volume will be displayed on the LCD by number (0-40 Steps).



9. Key Locking

- Push the ' HOLD' button to lock .



● Connection between PC and MP3 Set

1. Connection

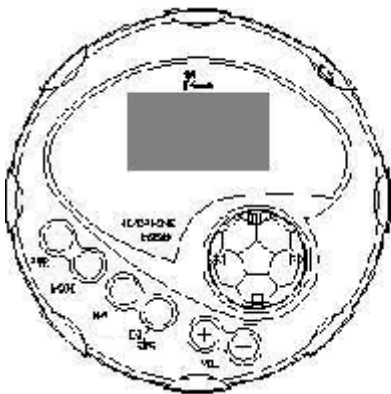
– It is automatically ‘ Power on’ when connect the USB cable of the ‘ *imusic* USB’ .

‘ CONNECT’ will be displayed on the LCD(ready to connect state).



– Start the PC program and press the ‘ Connect’ button in the program.

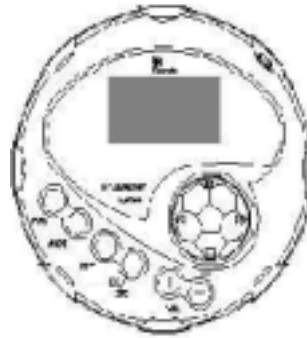
‘ OK’ will be displayed on the LCD (*imusic* and the PC are connected).

- The information about *imusic* will be displayed on the PC screen at this time:
- Number, name, date, and size of files
- Memory Size (used and unused)
- Memory Format Status



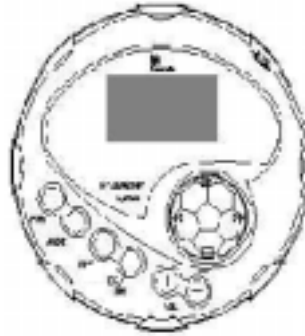
2. File Download, Upload


- 'DOWNLOAD' will be displayed on the LCD when you copy files from your PC to .
- 'UPLOAD' will be displayed on the LCD when you copy files from  to your PC.




3. Download, Upload State



- 'OK' will be displayed on the LCD when file download and upload is complete.
- 'Fail' will be displayed on the LCD when file download and upload has failed.




4. When  is disconnected from your PC it automatically plays MP3 files.

When You Have a Problem Using

When you have trouble using the  player please check the following before you contact our customer service desk.

1. When it does not operate or nothing is displayed on the LCD: check the battery (you should use two 1.5V AAA size battery. Check the polarity of the battery (+, -).
2. When you press the key but  does not operate: check if the ' HOLD' button is pushed down.
3. You press the ' PLAY' button in MP3 mode but you cannot listen to any music: check if any MP3 file is stored in the built-in flash memory.
4. When you cannot download the MP3 file: check if the '  USB' is turned on and the PC Connection Cable is securely connected to the USB port of your PC.

Cautions

Please read the following instructions carefully to store and use your  player.

1. Do not apply any excessive impact on the player.


The player works normally in walking or sport actions. However, the product can be damaged if it is dropped from a height or hit by a heavy object.

2. Do not spill liquid on the product.

Any liquid in the product may damage the internal components.

If any liquid is spilled on the product, wipe it out with a dry cloth and contact our customer service desk.

3. Storage:


avoid storing  in a place that has, for example, high humidity, high magnetism, and high temperature.

4. Be sure to clock the data slot to prevent any static discharge while you



are carrying .

Customer Service

● Product Information Service

If you have any trouble using , please contact us by telephone or e-mail.

A/S: 080-333-0666 E-mail: kslee@sejinelectron.co.kr

For more information about  software or the player, please visit the following  Internet site or PC online service forum:

Internet Service: http://www.sejin.com
--

Model	Notice
Class B Device (Domestic Information and Communication Device)	This device is registered as domestic electromagnetic wave device that can be used in residence area as well as other areas.

Specifications

Memory Size.	Built-in Memory 32MB/64MB/128MB
Liquid Crystal Display	LCD Segment type
Case	Plastic
PC Interface	USB
Bit Rate	4Mbps
3D Sound	SRS (Sound Retrieval System)
Equaliser	3 sound effects (Classic, Pop, and Rock)
Noise Rate	90Db
Earphone Output	7mW + 7mW
Output Frequency Range	20Hz – 20KHz
Channel Separation	40dB
Size (ØxD)/Weight	73 x 23mm/57g (without battery)

Accessories

1. Earphone
2. Software Installation CD
3. User's Guide
4. PC Connection Cable
5. AAA Size 1.5V Battery
6. Handlace

Warranty

About the Service

- SEJIN Electron Inc. provides the product warranty as the following according to the law on redemption for customer damage.
- Please contact your local dealer when the product is out of order.
(Please contact our service centre if you cannot use your local dealer.)
- The notification about service availability will be sent within seven days of your request, and the service will be delivered within fourteen days from the date of the notification.

Name		Model	
Date of Purchase		Serial No.	
Dealer Name		Price	

The warranty period lasts one year and the parts retention period is two years.

Free Service

We will provide free service for your Imusic if it is out of order within one year from the date of purchase (within the warranty period).

Type		Service	
		Within Warranty Period	After Warranty Period
Repair is required due to defect in performance and functionality (while using normally within ten days after purchase).		Exchange or refund	
Repair is required due to defect in performance and functionality (while using normally within one month after purchase).		Exchange	
Repair available	The same defect occurs three times	Free Service	Charged Service
	The same defect occurs four times	Exchange or refund	Charged Service
Repair unavailable (within parts retention period)	Part exists but repair is not possible	Exchange or refund	Exchange after depreciation
	Repair is not possible because part is not available		Refund the amount of 10% more after depreciation

FCC NOTICE

THIS DEVICE COMPLIES WITH PART 15 OF THE FCC RULES.
OPERATION IS SUBJECT TO THE FOLLOWING TWO CONDITION:
(1) THIS DEVICE MAY NOT CAUSE HARMFUL INTERFERENCE RECEIVED
(2) THIS DEVICE MUST ACCEPT ANY INTERFERENCE RECEIVE,
INCLUDING INTERFERENCE THAT MAY CAUSE UNDERSIRED
OPERATION.

This equipment has been tested and found to comply with the limits for a Class B digital device, pursuant to part 15 of the FCC Rules. These limits are designed to provide reasonable protection against harmful interference in a residential installation. This equipment generates, uses and can radiate radio frequency energy and, if not installed and used in accordance with the instruction, may cause harmful interference to radio communication. However, there is no guarantee that interference will not occur in a particular installation. If this equipment does cause harmful interference to radio or television reception, which can be determined by turning the equipment off and on, the user is encouraged to try to correct the intergerence by one or more of the following measures:

- Reorient or relocate the receiving antenna.
- Increase the separation between the equipment and receiver
- Connect the equipment into an outlet on a circuit difference from that to which the receiver is connected
- Consult the dealer of an experienced radio.TV technician for help.

NOTE : The manufacturer is not responsible for any radio or TV interference caused by unauthorized modifications to this equipment. Such modifications could void the user's authority to operate the equipment.