

# User's Manual

## STP-120L

### FCC NOTICE

THIS DEVICE COMPLIES WITH PART 15 OF THE FCC RULES. OPERATION IS SUBJECT TO THE FOLLOWING TWO CONDITIONS:  
(1) THIS DEVICE MAY NOT CAUSE HARMFUL INTERFERENCE, AND  
(2) THIS DEVICE MUST ACCEPT ANY INTERFERENCE RECEIVED, INCLUDING INTERFERENCE THAT MAY CAUSE UNDERSIRED OPERATION.

This equipment has been tested and found to comply with the limits for a Class B digital device, pursuant to part 15 of the FCC Rules. These limits are designed to provide reasonable protection against harmful interference in a residential installation.

This equipment generates, uses and can radiate radio frequency energy and, if not installed and used in accordance with the instructions, may cause harmful interference to radio communication. However, there is no guarantee that interference will not occur in a particular installation.

If this equipment does cause harmful interference to radio or television reception, which can be determined by turning the equipment off and on, the user is encouraged to try to correct the interference by one or more of the following measures:

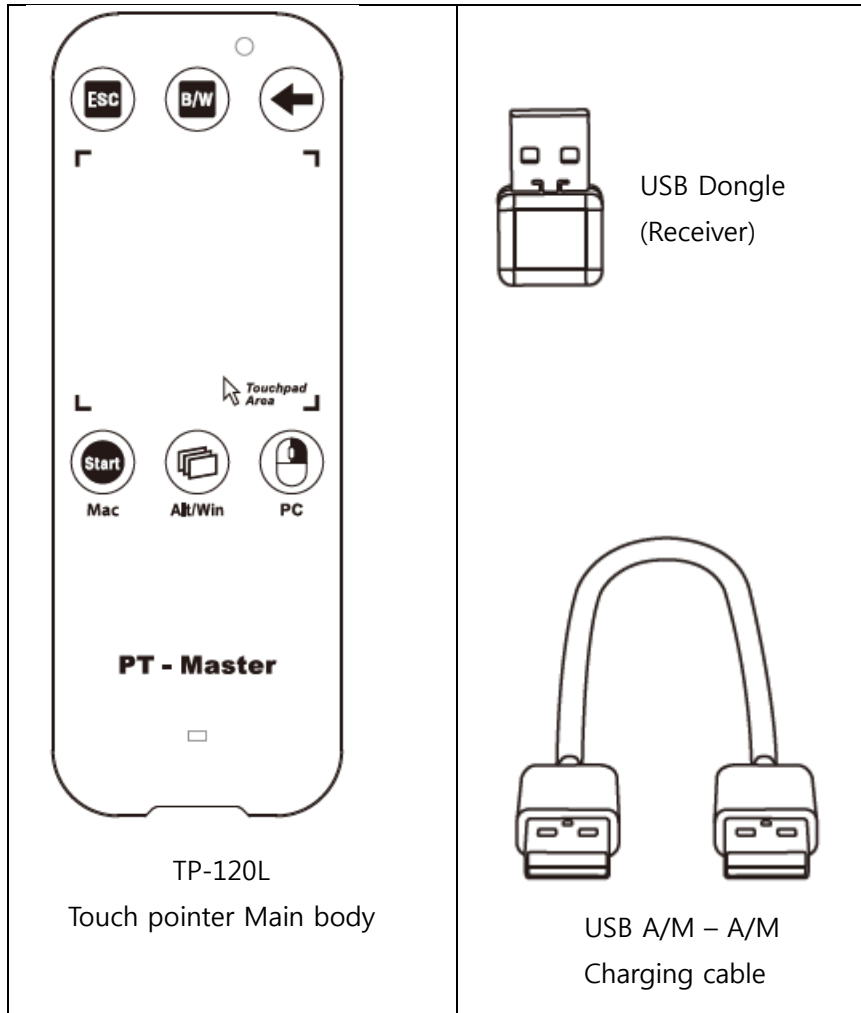
- Reorient or relocate the receiving antenna.
- Increase the separation between the equipment and receiver.
- Connect the equipment into an outlet on a circuit different from that to which the receiver is connected.
- Consult the dealer or an experienced radio/TV technician for help.

NOTE: Modifications not expressly approved by the manufacturer could void the user's authority to operate the equipment under FCC rules.

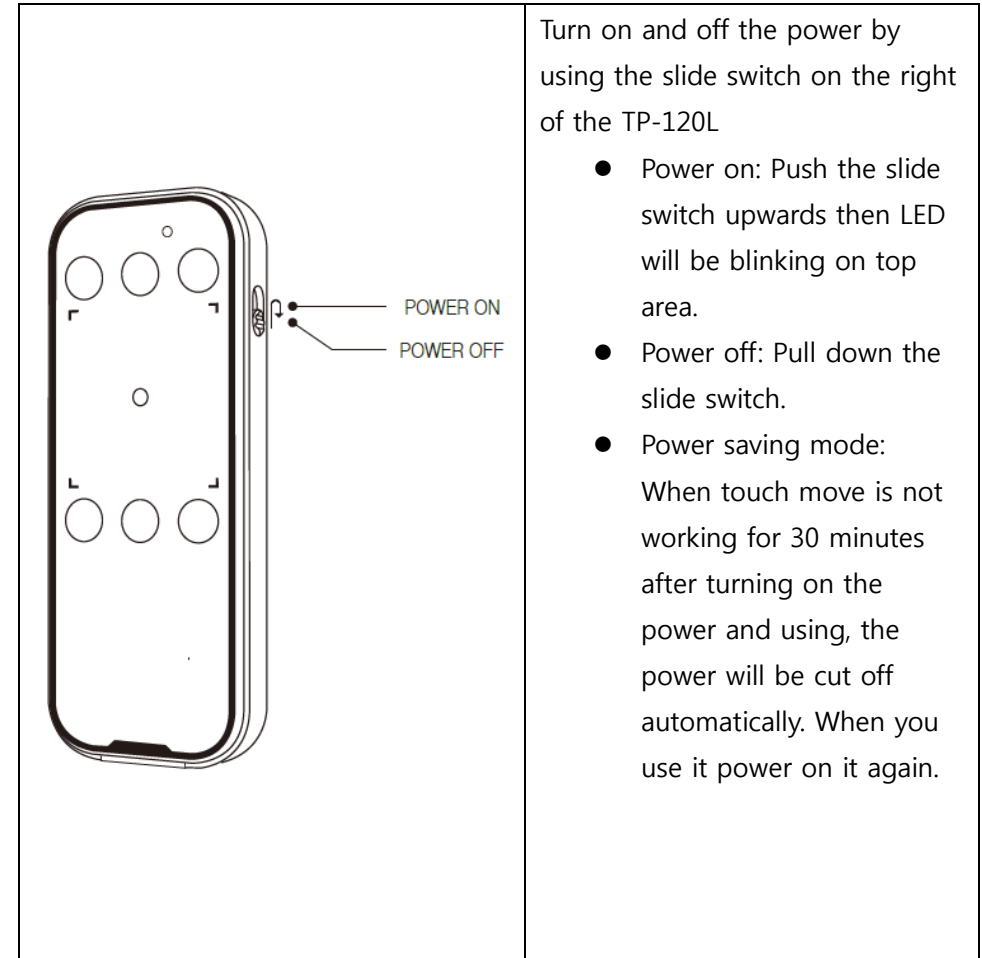
**SEJIN ELECTRON INC.**

# Quick manual

## 1. Packing



## 2. Power turning on and off



### 3. Charging the terminal

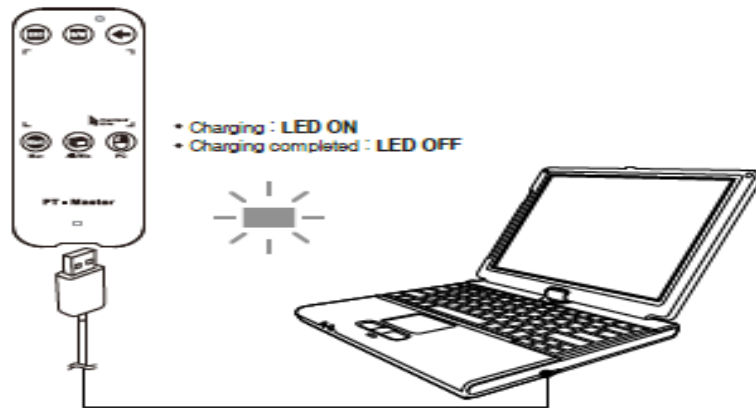
Battery is installed in TP-120L. Completely charge it before use. The remaining battery charge can be checked by LED lighting color.

Over 70%: LED color is green

Need charging the battery: LED color will be change to red. And if less than a certain voltage, the power will be turn off automatically and the LED is not lit. then can use it after charging with USB cable

- Connect the USB charge cable to the charging port and then to the USB port of PC
- The battery charging time is within 4 hours. During the charging, the LED is red at the bottom area and the LED turn will turn off when charging is complete.

Overcharge protection circuit built-in, when charge for a long time is safe.



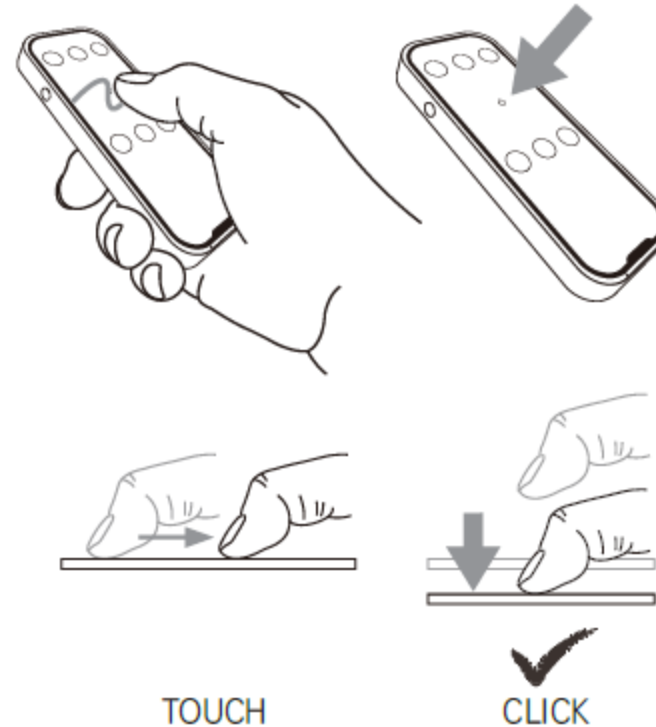
#### Warning

The charging cable shall be used in the approved USB A (Male) to A (Male) exclusive cable. If not, breakdown or damage may occur.

### 4. Touch & Click

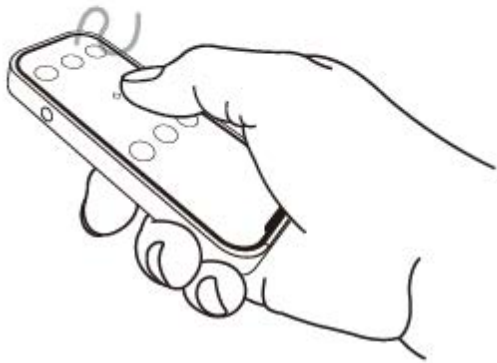
PT-Master is designed after touching and/or clicks your finger on the touch pad in the vertical direction.

- 1) Touch: Use to move the mouse cursor and coordinate input operation
- 2) Click: For mouse Left/Right click function and entering gestures.



## 5. Pointing

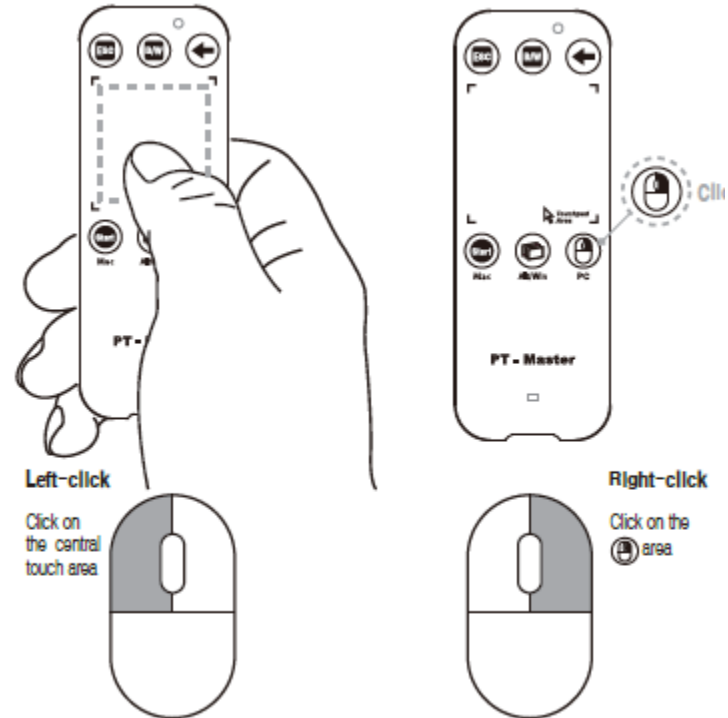
Changing the action mode to mouse mode and using your thumb to touch the front touch pad will let the mouse pointer move along.



## 6. Left/Right click

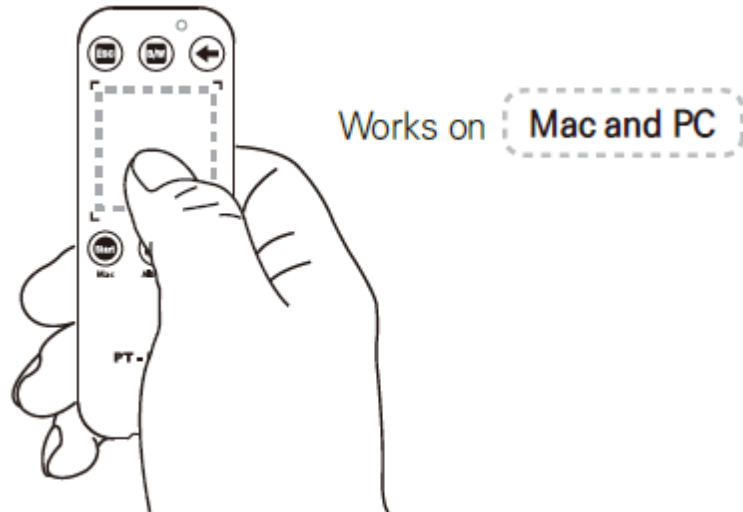
Touching and pressing the central touch pad area the result is click

- 1) Left click: Click on the Touch pad central area
- 2) Right click: Click the right mouse button in the lower-right corner of the image in a concave area.
- 3) Double click: Double click on the touch pad area.



## 7. Drag and Drop





Keep pressing the touch pad area for 1.5 seconds while clicking on it  
When you are in the drag status, this status will be maintained even if you let your finger off the Touch pad within 0.7 seconds. Drag status will be canceled in 0.7 seconds after letting the finger off




Keep clicking on for more than 1.5 seconds

## 8. Presentation function

PT-MASTER is support keynote program for Microsoft office PowerPoint and Macintosh.


- 1) Power key : Right side of the key(Upward: On, Downward- Off)
- 2) Laser point : Press the left side key, the laser light will be illuminates
- 3)  ESC : Escape Key features for finished Slide Show.  
USB receiver connected to a PC terminal and click the ESC button for longer than 6 seconds, the function will be same as re-connection function ( USB receiver, Plug-Out and Plug-In). when you need to use Physically separated from the USB receiver.
- 4)  Black or White : PT of the user can change to black or white screen display for a description.  
(Black and white selection for longer than 6 seconds of the B/W button, then you can select black and white screen display.
- 5)  ← : Previous Step/Build(Back Space) key feature.
- 6)  start : PowerPoint Slide Show Start feature.  
PowerPoint : "F5" Keynote : "Command+Option+P"  
(Keynote program will be optimized for power the TP-120L from the USB receiver connected to a PC, and then click START button for longer than 6 seconds to select for MAC OS

7)  Alt/Win : Screen switch key feature

Windows : Alt + Tab or Windows + Tab

Macintosh : Cmd + Tab

(Windows+Tab feature Alt+Tab feature and function change: USB receiver connected to a PC terminal and power on, then hold the Alt/Win button for 6 seconds or longer, the select features will change

8)  Mouse right key: Mouse right key function

USB receiver connected to a PC, right mouse button click and hold for more than 6 seconds, OS to select for PC and power point program will be optimized.

## 9. Wireless Presenter

